

Name: \_\_\_\_\_ ( )

Class : Primary 3 \_\_\_\_\_

## CHIJ ST NICHOLAS GIRLS' SCHOOL



Primary 3

First Continual Assessment – 2009

SCIENCE

BOOKLET A

4<sup>th</sup> March 2009

Total Time for Booklets A and B: 1 hour

15 questions  
30 marks

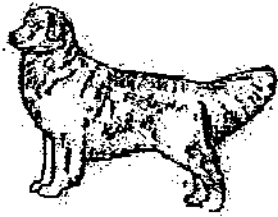
Do not open this booklet until you are told to do so.  
Follow all instructions carefully.  
Answer all questions.

**Section A : ( 15 x 2 MARKS )**

For each question from 1 to 15, 4 options are given. One of them is the correct answer. Make your choice (1, 2, 3 or 4). Write the correct answer in the Answer Sheet provided.

1. Which one of the following animals does **not** reproduce the same way as the others?

(1)



(2)



(3)



(4)



2. Which of the following explain why animals move?

- A: To find water.
- B: To get sunlight.
- C: To look for shelter.
- D: To escape from danger.

- (1) A, B and C only
- (2) A, B and D only
- (3) A, C and D only
- (4) B, C and D only

3. The pictures below show a bird and a tree.



bird

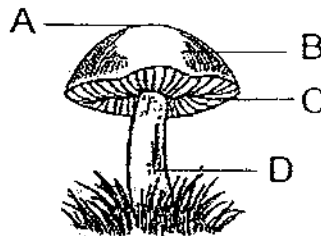


tree

What is the difference between the bird and the tree?

	Bird	Tree
(1)	Can reproduce	Cannot reproduce
(2)	Move on its own	Does not move on its own
(3)	Respond quickly to changes	Respond slowly to changes
(4)	Need air, food and water	Does not need air, food and water

4. In which one of the following parts of a mushroom can the spores be found?



- (1) A
- (2) B
- (3) C
- (4) D

5. Fiona wanted to track how much each of her 4 chicks had grown in two months. The table below shows the mass of each chick in January and in February.

Chicks	Mass (gram)	
	January	February
A	100	115
B	104	125
C	182	199
D	120	145

Which one of the following chicks had grown the most in 1 month?

- (1) A
- (2) B
- (3) C
- (4) D

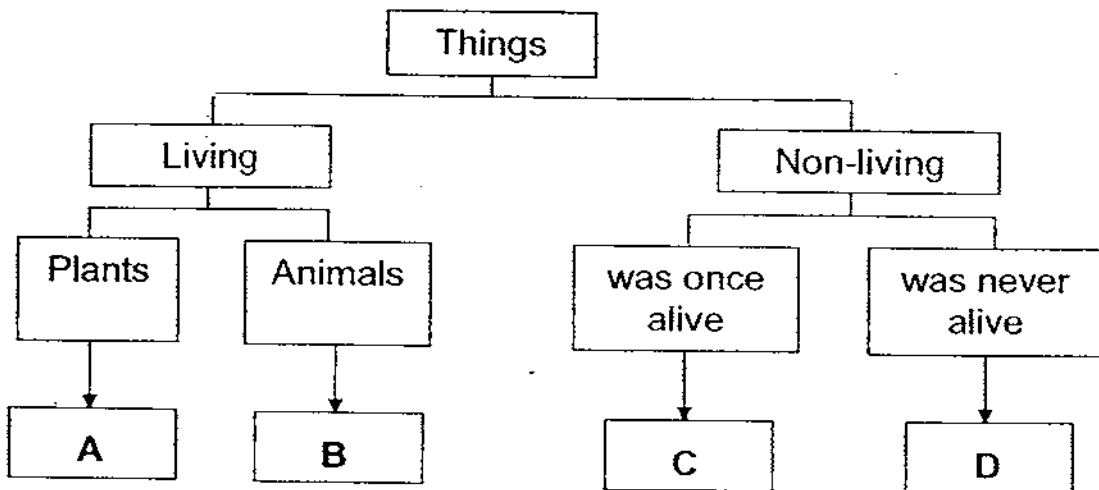
6. Which one of the following living things is incorrectly matched to its description?

	Living Things	Description
(1)	Mushroom	cannot make their own food
(2)	Leaves	can be found in different colours
(3)	Animals	move about in search of food
(4)	Bacteria	harmful to the human body

7. Which one of the following statements shows that living things respond to touch?

- (1) A cat drinking milk from its bowl.
- (2) A cat stretching itself after a long nap.
- (3) A cat running away after spotting a dog.
- (4) A cat purring when cuddled by its owner.

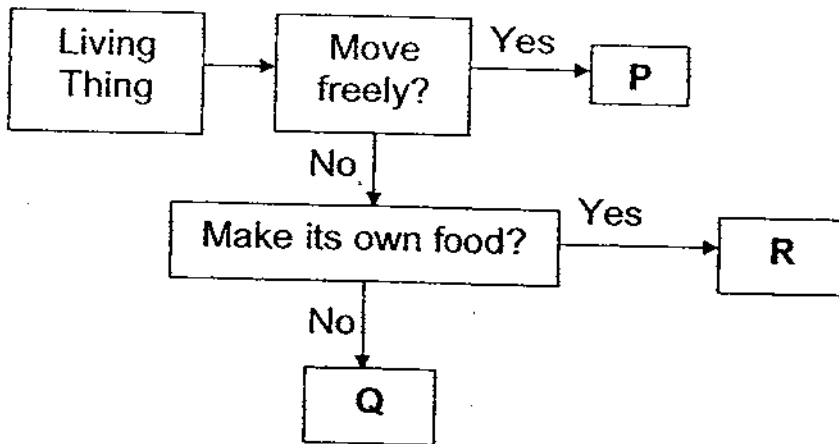
8. **A, B, C** and **D** are things that are classified according to the groups that they belong to.



Which of the following shows the correct classification for **A, B, C** and **D** respectively?

	<b>A</b>	<b>B</b>	<b>C</b>	<b>D</b>
(1)	grass	monkey	lamp post	cotton wool
(2)	rose	eagle	salted fish	key
(3)	moss	lizard	stone statue	envelope
(4)	mushroom	tortoise	Tyre	mirror

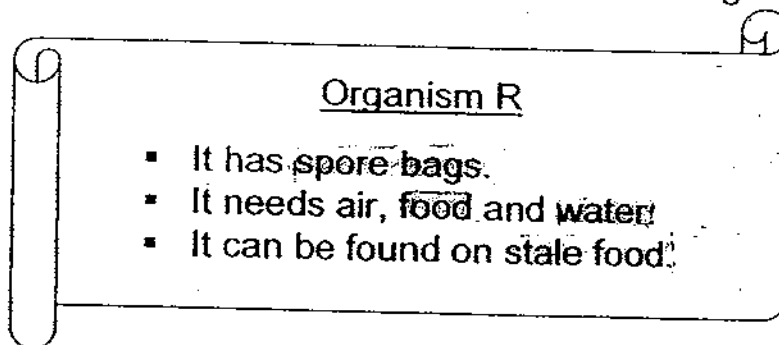
9. Study the flow chart below.



Which one of the following sets of living things correctly represents the letters P, Q and R respectively?

	P	Q	R
(1)	orang utan	mushroom	orchid
(2)	yeast	moss	toadstool
(3)	housefly	coconut tree	mould
(4)	rose plant	grass	fern

10. The scroll below shows some characteristics of Organism R.



What could Organism R be?

- (1) fern
- (2) yeast
- (3) mould
- (4) toadstool

11. The table below shows the conditions under which four different bread samples, A, B, C and D, were kept. A tick (✓) in the box indicates the sample was kept under that condition.

Sample \ Condition	Dark	Moist
A	✓	
B		
C		✓
D	✓	✓

Which of the following bread sample would contain **no** bread mould ?

- (1) A only
  - (2) C only
  - (3) A and B only
  - (4) A, B, C and D
12. The pictures below show two trees, A and B.



Tree A



Tree B

Which of the following statements are correct?

- A : Tree A is taller than Tree B.  
 B : Tree A has a thicker trunk than Tree B.  
 C : Tree A has no root but Tree B has roots.  
 D : Tree A provides more shade than Tree B.

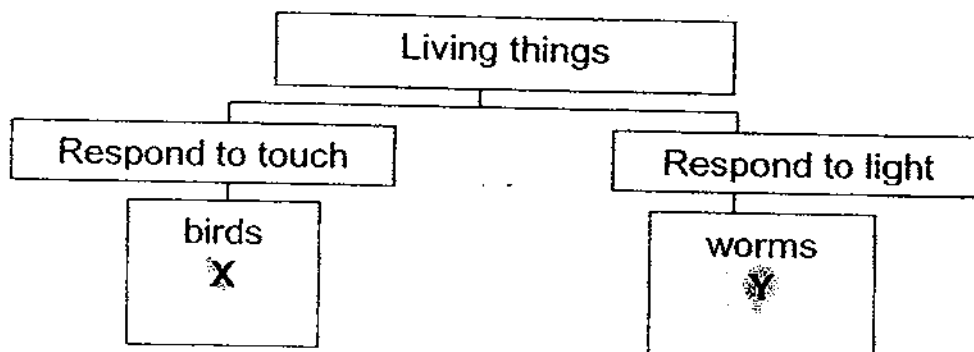
- (1) A and C only
- (2) B and D only
- (3) A, B and C only
- (4) A, B, C and D

13. Which of the following statements do(es) **not** show characteristic of living things?

- A: A plot of land has many toadstools found on it.
- B: A balloon grows bigger when air is blown into it.
- C: A young boy cries out in pain when hit by a ball.
- D: A woman speaking to her friend over the telephone.

- (1) A only
- (2) B only
- (3) C and D only
- (4) A, B and C only

14. Study the classification diagram below.



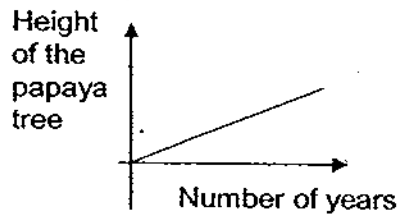
Which one of the following **cannot** be X?

- (1) Rabbit
- (2) Mimosa
- (3) Apple tree
- (4) Cockroach

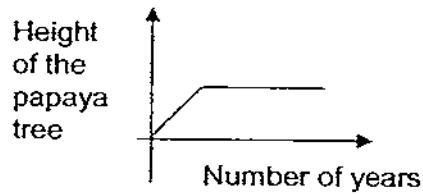


15. Joshua planted a papaya tree when he was 8 years old. He is now 10 years old. Which of the following graphs correctly shows the growth of the papaya tree?

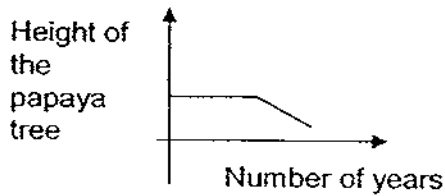
(1)



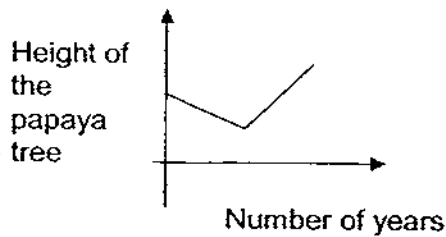
(2)



(3)



(4)



End of Section A



Name: \_\_\_\_\_ ( )

Class : Primary 3 \_\_\_\_\_

## CHIJ ST NICHOLAS GIRLS' SCHOOL



Primary 3

First Continual Assessment – 2009

SCIENCE

BOOKLET B

4<sup>th</sup> March 2009

Total Time for Booklets A and B: 1 hour

7 questions  
20 marks

Booklet A	30
Booklet B	20
Total	50

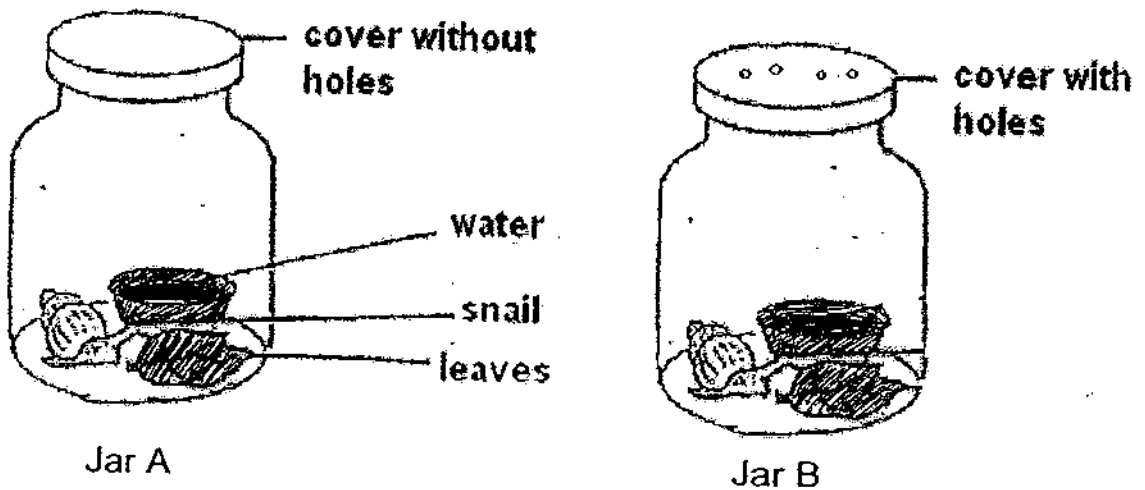
Do not open this booklet until you are told to do so.  
Follow all instructions carefully.

\_\_\_\_\_  
Parent's Signature/Date

**Section B : (20 marks)**

Answer all questions.

16. The pictures below shows 2 glass jars, each with a snail inside. Water and leaves are present in the jar. Jar A has a cover without holes but Jar B has a cover with some holes.



- (a) What will happen to the snail on Jar A and Jar B after a week? [1]

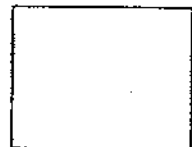
---

- (b) Explain your answer in (a) above. [1]

---

- (c) What characteristic of living things does the experiment show? [1]

---



17. Heather and Kate were discussing if the clock is a living thing. Kate felt that the clock is a living thing because it is able to move on its own.

Was Kate correct? Give a reason for your answer.

[1]

---

---

18. (a) Put a tick (✓) in the correct boxes that show the characteristics of the things in the table below. [3]

Things	Can move <u>freely</u> from place to place	Can respond to changes	<u>Need</u> air, food and water
Flying kite			
Parrot			
Water lily			

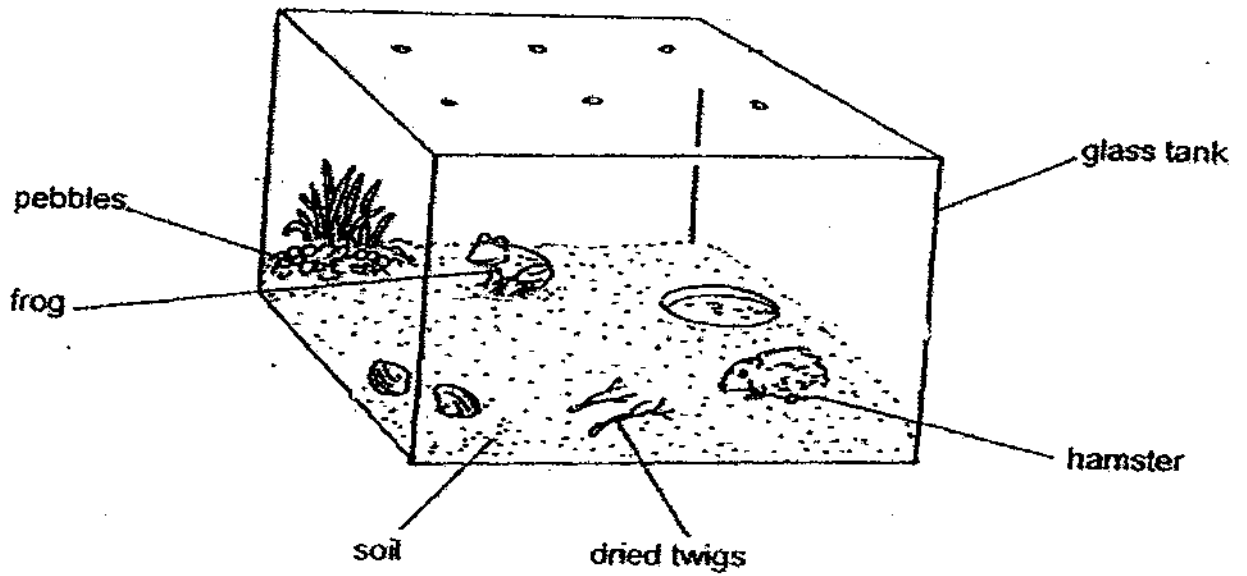
- (b) From the table above, state one difference between the flying kite and the parrot. [1]

---

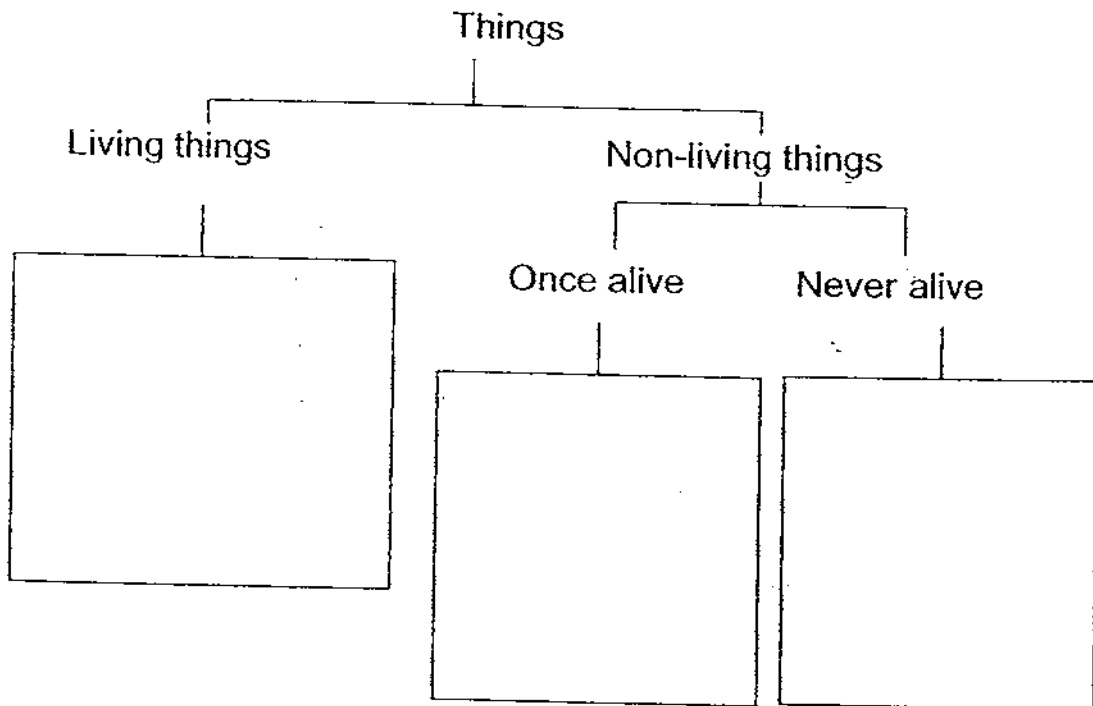
---



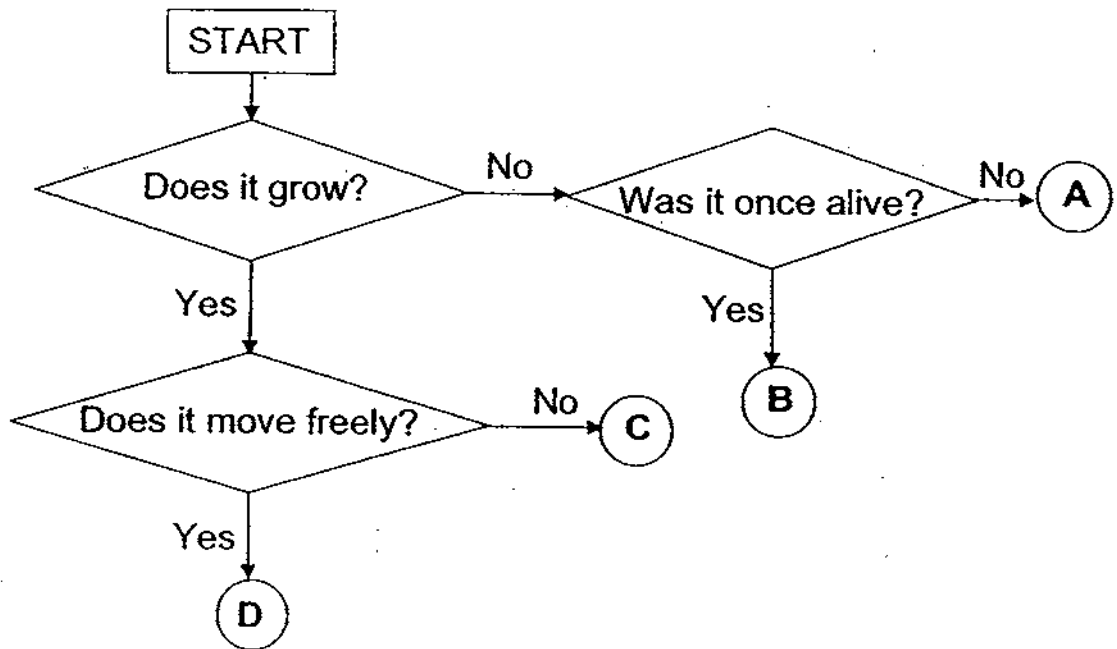
19. Study the picture below.



Group these things under the appropriate headings in the classification diagram below. [3]



20. Study the flow chart below.



(a) Which of the following best represents the letters A, B, C or D in the flowchart? [1]

(i) Tadpole : \_\_\_\_\_

(ii) Wooden walking stick : \_\_\_\_\_

(b) State the difference between A and D. [1]

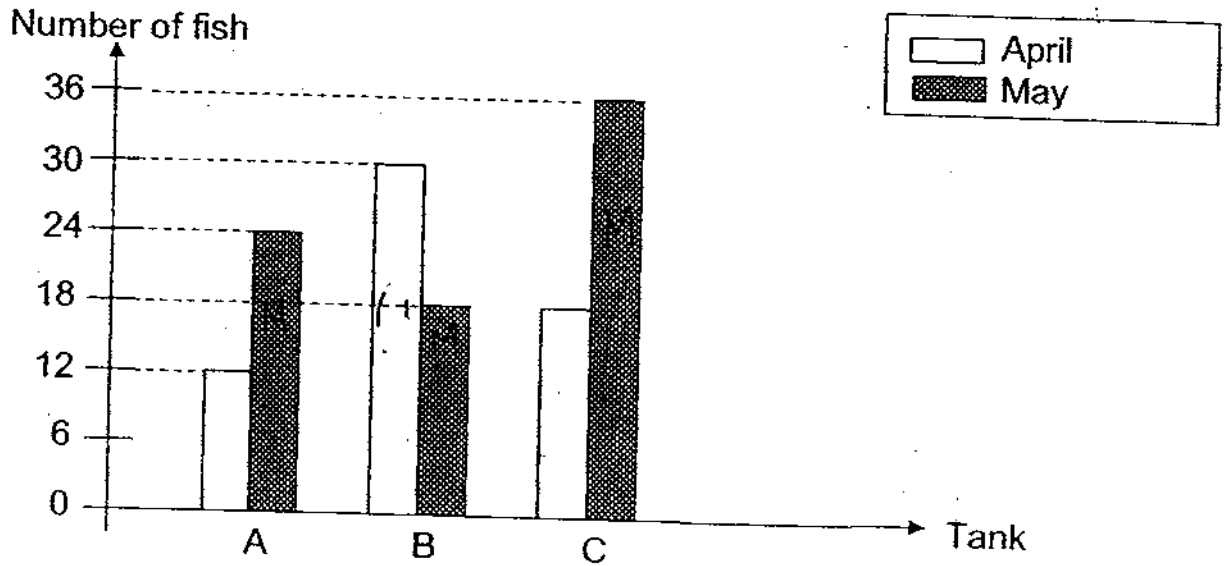
\_\_\_\_\_

(c) State the characteristics of C. [1]

\_\_\_\_\_



21. The number of fish in ~~four~~<sup>three</sup> tanks, A, B and C were recorded in a graph over a period of two months.



- (a) Which tank shows that the number of fish in it was decreasing after two months? [1]

Tank \_\_\_\_\_

- (b) What characteristic of living things is shown from the graph? [1]

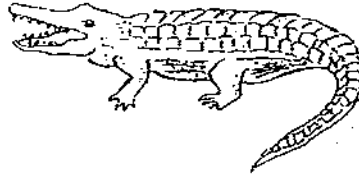
\_\_\_\_\_



22. The pictures below show a toadstool and a crocodile. Both are living things that need air, food and water to grow.



Toadstool



Crocodile

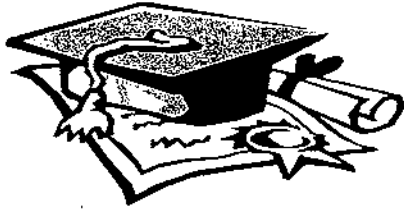
- (a) State two **other similarities** between the toadstool and the crocodile. [2]
- (i) \_\_\_\_\_
- (ii) \_\_\_\_\_
- (b) State two **differences** between the toadstool and the crocodile. (Do not compare shape, size and colour.) [2]
- (i) \_\_\_\_\_
- (ii) \_\_\_\_\_



End of Paper





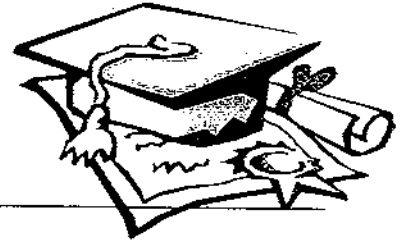


# ANSWER SHEET

**EXAM PAPER 2009**

**SCHOOL : CHIJ PRIMARY  
SUBJECT : PRIMARY 3 SCIENCE**

**TERM : CA1**



Q1	Q2	Q3	Q4	Q5	Q6	Q7	Q8	Q9	Q10	Q11	Q12	Q13	Q14	Q15
1	3	3	3	4	4	4	2	1	3	3	2	2	3	1

16)a)The snail in Jar A will die while the snail in Jar B will not.

b)Because the snail in Jar A will use up all the air in the Jar as the cover has no holes, but the snail in Jar B gets continuous supply of air from the cover that has holes.

c)Living things need air to survive.

17)No. Because the clock does not reproduce, grow and does not need air, food and water.

18)a)Parrot: ✓ ✓ ✓

Water lily: ✓ ✓

b)The flying kite cannot move freely from place to place but the parrot can.

19)Living things: Hamster, Frog

Once alive: Dried twigs

Never alive: Soil, Pebbles, Glass tank

20)a)i)D ii)B

b)A does not grow but D can grow.

c)C grows but does not move freely.

21)a)b

b)Living things can reproduce and die.

22)a)i)They both cannot make their own food.

ii)They both can respond to changes.

b)i)The toadstool reproduce by spores while the crocodile lay eggs.

ii)The crocodile can move freely from place to place while the toadstool cannot.