

**MAHA BODHI SCHOOL**  
**2005 CONTINUAL ASSESSMENT 2**  
**SCIENCE**

NAME: \_\_\_\_\_ (     )

DATE: 25 AUGUST 2005

CLASS: PRIMARY 3 (     )

DURATION: 1 HR (PART I & II)

**Part I: (24 marks)**

For each question from 1 to 12, four options are given. One of them is the correct answer.

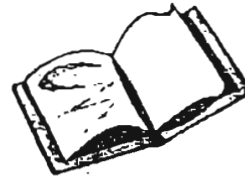
Make your choice (1, 2, 3 or 4). Shade the correct answer (1, 2, 3 or 4) on the Optical Answer Sheet (OAS).

1. Which one of the following objects is made from materials that were once alive?

(1)



(2)



(3)



(4)



(     )

2. Look at the diagrams below.

(A)



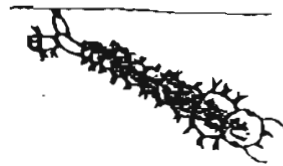
(B)



(C)



(D)



Which of the following animals are in the larvae stage?

- (1) A and D only
- (2) A and B only
- (3) C and D only
- (4) B and C only

( )

3. The following diagrams show the different stages A, B, C and D of the life cycle of a plant.



A



B



C



D

What is the correct order of its life cycle?

- (1) B → C → A → D
- (2) C → A → B → D
- (3) A → C → D → B
- (4) D → A → C → B

( )

4. Which one of the following statements states correctly the similarity between a mosquito and a butterfly?

- (1) Both have three stages in their life cycle.
- (2) Both spend a part of their life cycle in water.
- (3) Both have young that look like their adult.
- (4) Both go through the pupae stage. ( )

5. Cooking utensils are usually made of aluminium because \_\_\_\_\_.

- (A) it is light
- (B) it does not rust easily
- (C) it allows food to be cooked quickly

- (1) A and B only
- (2) A and C only
- (3) B and C only
- (4) A, B and C ( )

6. Sam's finger is pricked by a needle. Which one of the following sense organs tells him that his finger is hurt?

(1)



Nose

(2)



Ears

(3)



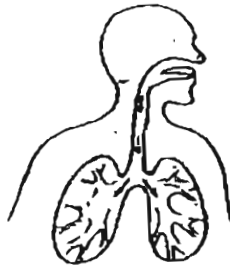
Eyes

(4)



Skin ( )

7. The diagram below shows a system in the human body.



What is the function of this system?

- (1) It carries messages from one part of the body to another.
- (2) It carries food to various parts of the body.
- (3) It digests the food we eat into simple substances.
- (4) It takes in oxygen and removes carbon dioxide. ( )

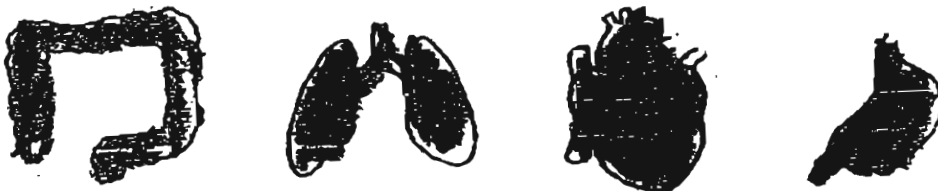
8. The table below shows different types of food which are grouped according to their tastes.

Group A	Group B	Group C
Lemon	Honey	Soya sauce
Vinegar	Jam	Cheese crackers

Which one of the following food items can be placed in Group B?

- (1) Chilli
- (2) Lime
- (3) Raisin
- (4) Potato chips ( )

9. Which one of the following organs in the body is not shown below?



- (1) Stomach
- (2) Heart
- (3) Lungs
- (4) Small intestine ( )

10. The following diagrams show the roots of some plants. Which one of the following plants has roots that will hold it most firmly to the ground?

(1)



(2)



(3)



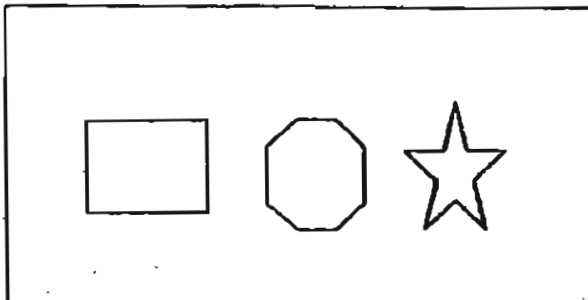
(4)



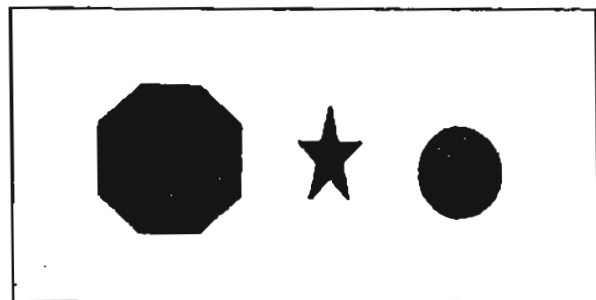
( )

11. Jenny groups some objects into two groups, 'Non-Sokas' and 'Sokas', as shown below.

Non-Sokas



Sokas



Which one of the following statements about Sokas is true?

- (1) All Sokas have the same size.
- (2) All Sokas have the same shape.
- (3) All Sokas have the same colour.
- (4) All Sokas have the same colour and shape.

( )

12. 4 children suggested what will happen to the food in our stomach. Who has made a mistake?

(1)

Food is completely digested.



(2)

The food is broken down into smaller pieces.



(3)

Food becomes softer.



(4)

Digestive juices are produced to digest the food.



( )

END OF PART I

**MAHA BODHI SCHOOL**  
**2005 CONTINUAL ASSESSMENT 2**  
**SCIENCE**

Written Paper	80
Practical Test	10
Junior Science Card	10
Total	100

NAME: \_\_\_\_\_ ( )

CLASS: PRIMARY 3 ( )

DATE: 25 AUGUST 2005

DURATION : 1 HR (PART I & II)

PARENT'S SIGNATURE :

---

Part II: (16 marks)

Write your answers to questions 13 to 20 in this script.

13. State the material that is used to make the following objects.

(i) Nail : \_\_\_\_\_

(ii) Disposable chopsticks : \_\_\_\_\_

(iii) Raincoat : \_\_\_\_\_

(iv) Balloon : \_\_\_\_\_

[2]

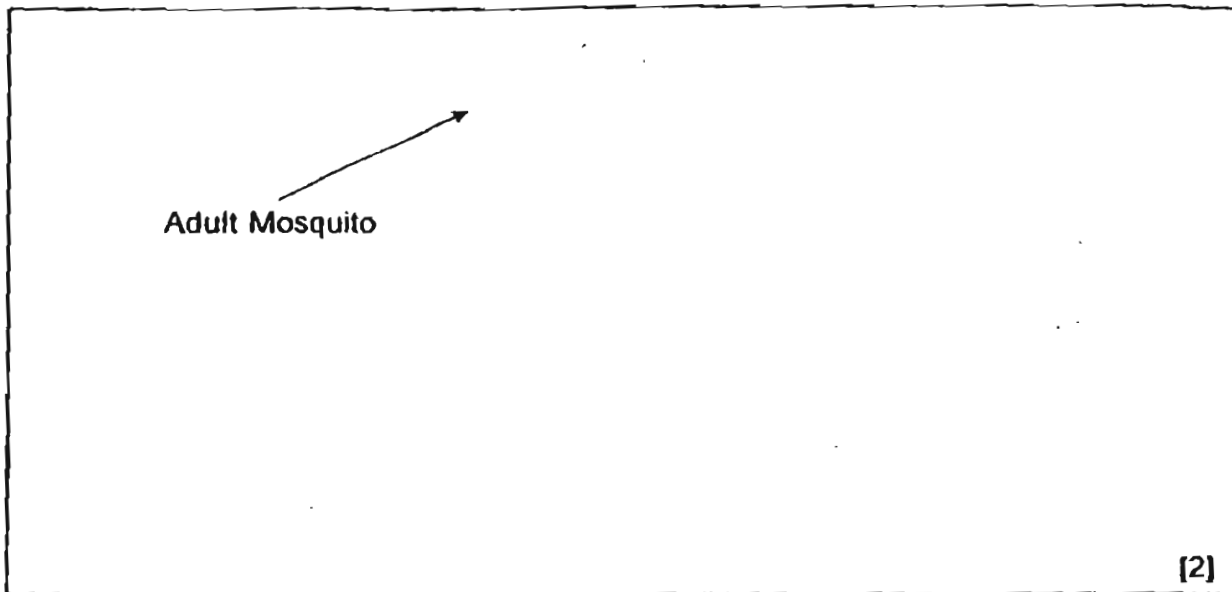
14. Why do food-sellers at hawker centres prefer using bowls and plates which are made of plastic instead of those that are made of glass or ceramic? State two reasons.

(i) \_\_\_\_\_

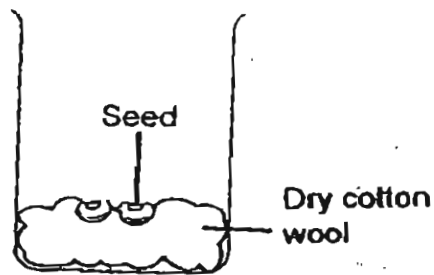
(ii) \_\_\_\_\_ [2]

36

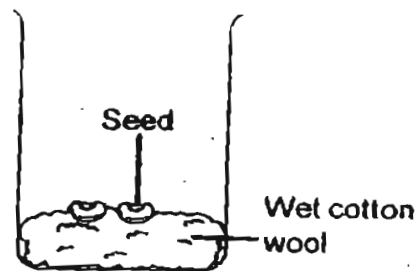
15. Draw the life-cycle of the mosquito in the space below using words and arrows.



16. Derek prepares two set-ups, A and B, using some cotton wool and seeds, as shown below. He puts them near the windows in his room.



Set-up A



Set-up B

After a few days, he observes changes to the seeds in one of the set-ups.

(a) Which set-up do you think it is?

Set-up \_\_\_\_\_ [1]

(b) Give a reason for your answer in (a).

\_\_\_\_\_  
\_\_\_\_\_ [1]

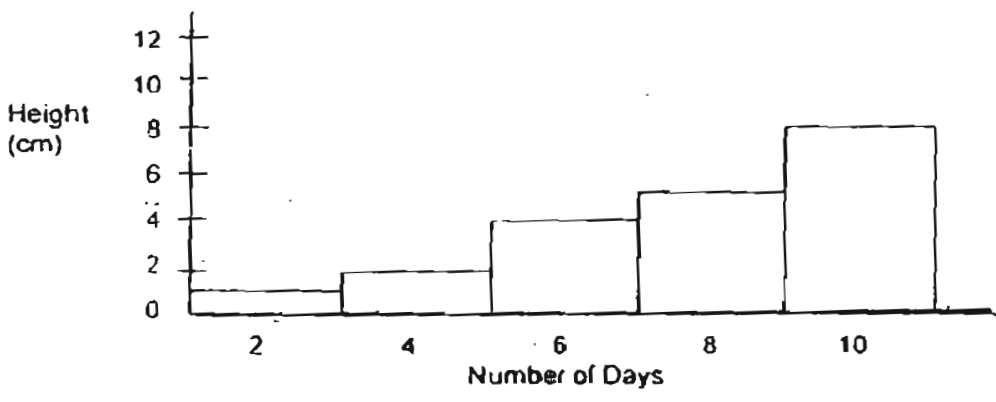


17. Name the sense organ which tells you the following:

- (a) The fruit is sour : \_\_\_\_\_
- (b) The electric stove is hot : \_\_\_\_\_
- (c) The bell is ringing : \_\_\_\_\_
- (d) The building is very tall : \_\_\_\_\_

[2]

18. A plant was placed in a pot and its height was recorded every two days as shown in the graph below.



The plant grew by \_\_\_\_\_ cm from Day 8 to Day 10.

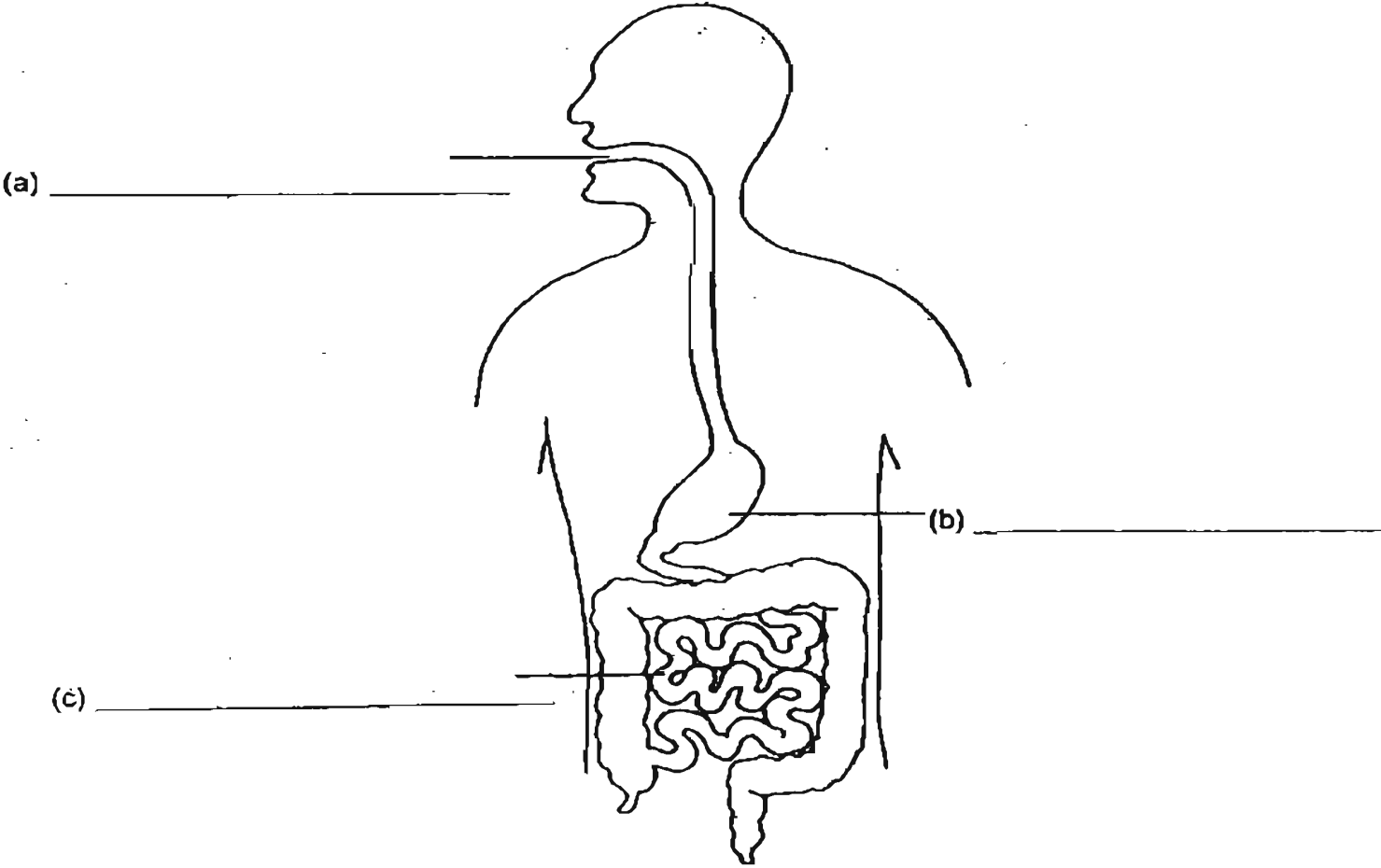
[1]

19. Name all the senses that can be used by a deaf and dumb man.

\_\_\_\_\_  
\_\_\_\_\_

[2]

20. Name the parts. (a), (b) and (c) of the digestive system below.



[3]

END OF PAPER

MAHA BODHI PIMARY SCHOOL  
 PRIMARY 3 SCIENCE 2005  
 CONTINUAL ASSESSMENT 2

ANSWER SHEETS

1. 2

2. 1

3. 1

4. 4

5. 4

6. 4

7. 4

8. 3

9. 4

10. 4

11. 3

12. 1

13.i)Metal

ii)Wood

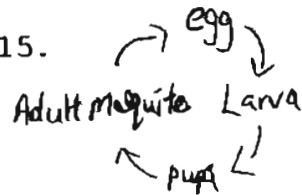
iii)Plastic

iv)rubber

14.i)Plastic is lighter glass and ceramic.

ii)Plastic will not break easily as glass and ceramic.

15.



16.a)B

b)Seed is set-up B have under for them to grow but seed in set-up A do not have water.

17.a)Tongue

b)Skin

c)Ears

d)Eyes

18.The plant grew by 3 cm from Day 8 to Day 10

19.Touch taste,sight,smell

20.a)Mouth

b)Stomach

c)Small intestine