

NAME : \_\_\_\_\_ ( )

CLASS : \_\_\_\_\_

**METHODIST GIRLS' SCHOOL (PRIMARY)**

**MID - YEAR EXAMINATION 2008**

**PRIMARY THREE**

**SCIENCE**

**BOOKLET A**

**Total time for Booklets A and B : 1 h 30 min.  
Booklet A : 30 Questions ( 60 marks)**

**DO NOT OPEN THIS BOOKLET UNTIL YOU ARE TOLD TO DO SO.**

**FOLLOW ALL INSTRUCTIONS CAREFULLY.**

**Section A : ( 30 x 2 marks )**

For each question, four options are given. Choose the most suitable option and shade your answer in the Optical Answer Sheet (OAS) provided.

1. As Ali was walking, he picked up a dead bird. His father said it was not a living thing because \_\_\_\_\_.

A: it can no longer reproduce  
B: it can no longer grow  
C: it can no longer respond

- (1) A only  
(2) A and B only  
(3) A and C only  
(4) A, B and C

2. John put some animals into two groups X and Y as shown below.

Group X	Group Y
Dolphin	Platypus
Rabbit	Ostrich
Seal	Clownfish

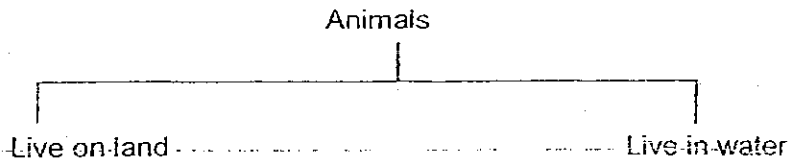
John grouped the animals according to \_\_\_\_\_.

- (1) the way they move  
(2) their body coverings  
(3) the way they reproduce  
(4) the types of food they eat

3. Which of these body coverings help to keep the animals warm?

- (1) Hair and scales  
(2) Feathers and hair  
(3) Scales and shells  
(4) Feathers and scales

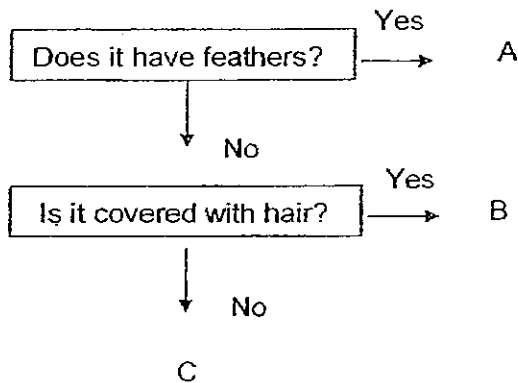
4. Study the classification table below. Which of the following animals have been classified wrongly?



A: leopard  
C: mosquito larva

B: stingray  
D: kingfisher

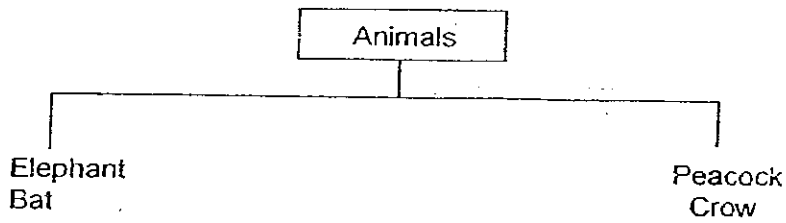
- (1) A and B  
(2) A and D  
(3) B and C  
(4) C and D
5. Study the flow chart below.



Which of the following animals should A, B and C be?

	A	B	C
(1)	Swan	Lobster	Goldfish
(2)	Ostrich	Monkey	Duck
(3)	Sparrow	Penguin	Whale
(4)	Penguin	Whale	Snail

6. Study the classification table below.

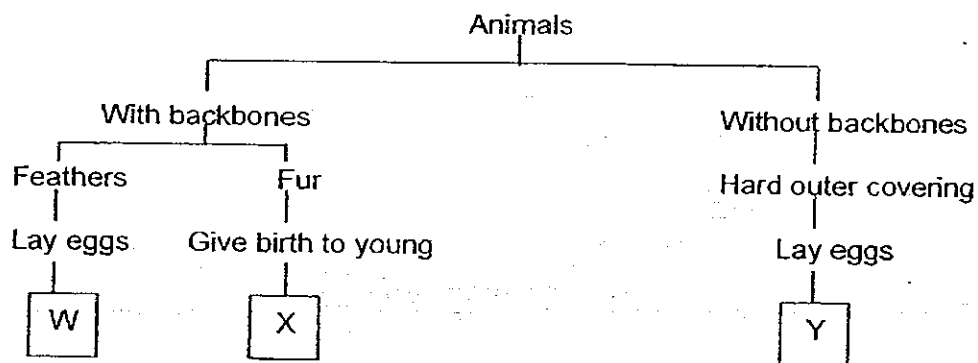


Which of the following can be used to classify the animals as shown above?

- A: By their colours
- B: By their body coverings
- C: By their method of reproduction

- (1) C only
- (2) A and B only
- (3) A and C only
- (4) B and C only

7. Study the classification table below.



Which of the following animals would you put in W, X and Y?

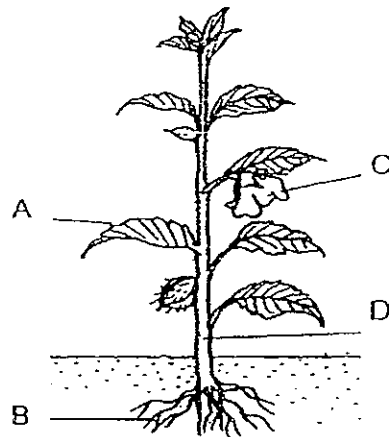
	W	X	Y
(1)	robin	dog	beetle
(2)	eagle	anteater	earthworm
(3)	pigeon	stingray	snail
(4)	goldfish	whale	mealworm

8. Which one of the following would be able to carry out photosynthesis?

- A: Birds' Nest Fern
- B: Toadstool
- C: Mould
- D: Lantana

- (1) A only
- (2) A and C
- (3) A and D
- (4) A, B and D

9. Which part of the plant will become a fruit?

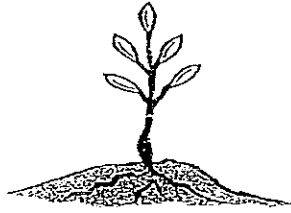


- (1) A
- (2) B
- (3) C
- (4) D

10. The \_\_\_\_\_ of a plant protect/s its seeds.

- (1) fruit
- (2) stem
- (3) leaves
- (4) flowers

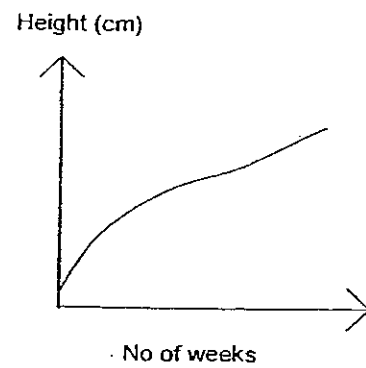
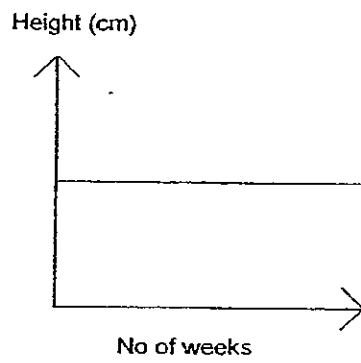
11. Which one of the following graphs shows the change in height as the seedling grows into an adult plant?



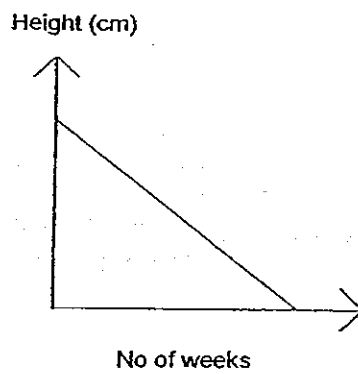
(1)



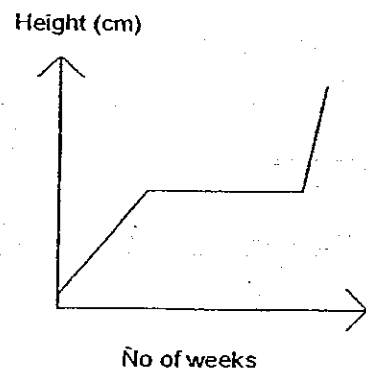
(2)



(3)



(4)



12. Study the diagram below and answer Questions 12 and 13.

GROUP A
Water lily
Rain tree
X

GROUP B
Sword Fern
Moss
Y

What can X and Y be?

	X	Y
(1)	Tree fern	Water spangle
(2)	Orchid	Pine
(3)	Bird's nest fern	Jasmine
(4)	Mimosa	Sunflower

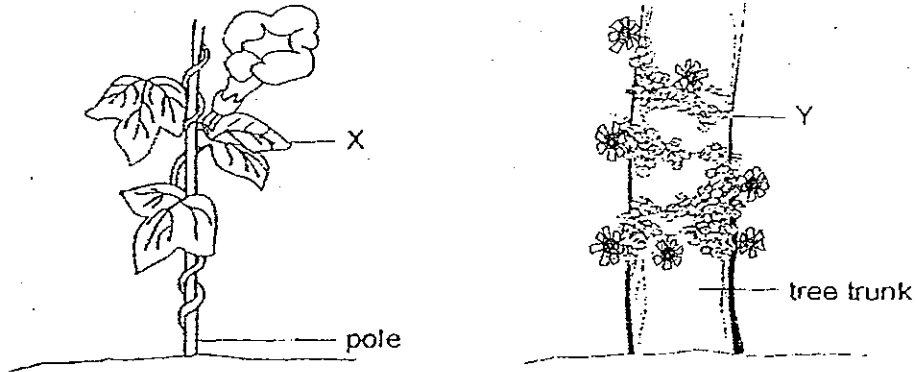
13. The plants in Group A and Group B are grouped according to \_\_\_\_\_.

- (1) land or water plants
- (2) green or non-green plants
- (3) flowering or non-flowering plants
- (4) poisonous and non-poisonous plants

14. Most plants can grow almost anywhere as long as they \_\_\_\_\_.

- (1) are planted
- (2) can make food
- (3) get enough air, water and sunlight
- (4) need not compete with one another for space

15. The diagram below shows two green plants, X and Y.

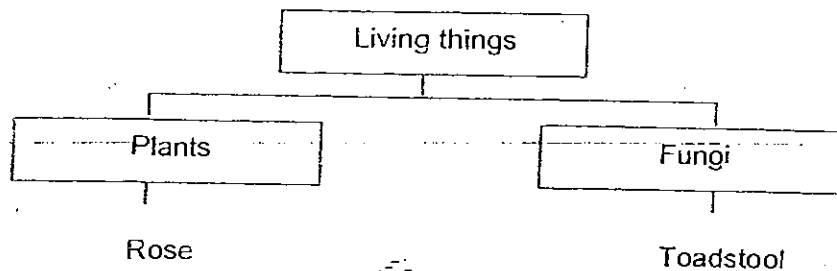


Which of the following statements about **both** plants, X and Y, is **not correct**?

- (1) They have roots.
  - (2) They have weak stem.
  - (3) They reproduce by spores.
  - (4) They make their own food.
16. A plant responds to \_\_\_\_\_ by growing towards them.
- (1) light and water
  - (2) food and shade
  - (3) sound and touch
  - (4) carbon dioxide and soil
17. Which of the following statements on micro-organisms are **true**?
- A: Yeast used in bread is a type of bacteria.  
B: Micro-organisms cannot be seen with the naked eye.  
C: Micro-organisms reproduce by producing spores.  
D: Not all micro-organisms are harmful to people.
- (1) A and B
  - (2) A and D
  - (3) B and D
  - (4) C and D



18. Look at the classification chart given.



Which of the following characteristics can be used to differentiate rose from toadstool?

- A: Rose plant has flowers but toadstool does not.
- B: Rose plant can make its own food but toadstool cannot.
- C: Rose cannot make its own food but toadstool can.
- D: Rose has leaves, stem and roots but toadstool does not.

- (1) A and B
- (2) A and C
- (3) A, B and D
- (4) A, C and D

19. Which of the following statements is true?

- (1) All fungi are edible.
- (2) Fungi are green in colour.
- (3) Fungi can only be seen using a microscope.
- (4) Fungi feed on dead plants and animals around them.

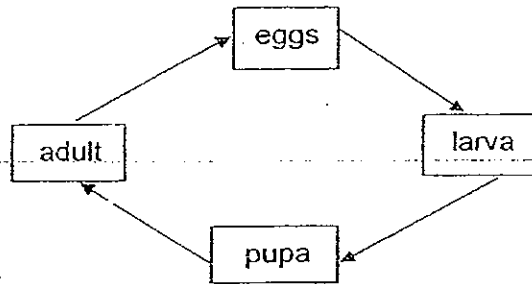
20. Tom, Ali, Siti and Bill each made a statement about mushrooms. Which two pupils made the right statements?

- Tom : The gills of mushrooms are found along the stalk.
- Ali : Spores can be found on the gills of mushrooms.
- Siti : Mushrooms come in different shapes, colours and sizes.
- Bill : Mushrooms only grow on trees.

- (1) Tom and Bill
- (2) Ali and Bill
- (3) Ali and Siti
- (4) Bill and Siti

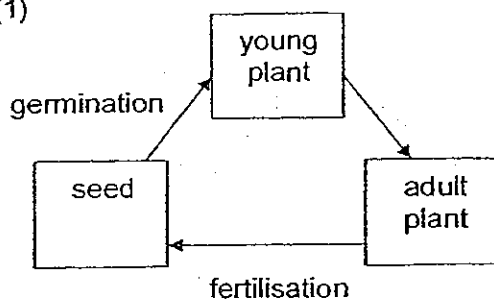
21. What are the similarities between fungi and bacteria?
- A: They can grow.
  - B: They are harmful to man.
  - C: They cannot make their own food.
  - D: They come in different shapes and sizes.
- (1) A and B
  - (2) A and C
  - (3) A, B and C
  - (4) A, C and D
22. Melvin wants to carry out an experiment to find out in which part of his garden seeds would grow the fastest. What conditions must he keep the same to ensure that his experiment is a fair one?
- A: The type of seeds he uses.
  - B: The amount of water he gives the seeds
  - C: The place he puts the seeds.
  - D: The type of soil he uses.
- (1) A, B and C
  - (2) A, B and D
  - (3) B, C and D
  - (4) A, B, C and D
23. Which of the following baby animals below look like their parents?
- A: Duckling
  - B: Caterpillar
  - C: Kitten
  - D: Wiggler
- (1) A and B
  - (2) A and C
  - (3) B and C
  - (4) B and D
24. How are the frog and the fish similar?
- (1) Both lay eggs on land.
  - (2) Both lay eggs in the water.
  - (3) Both look after their young.
  - (4) Both have 4-stage life cycle

25. The diagram below shows the life cycle of animal X. This animal cannot be a \_\_\_\_\_.

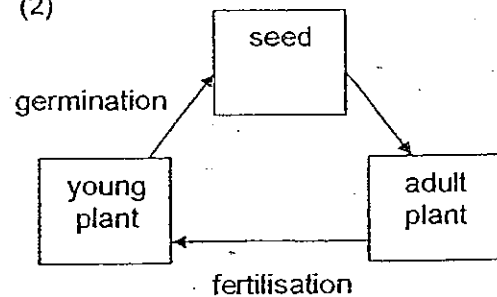


- (1) butterfly  
 (2) mosquito  
 (3) mealworm  
 (4) grasshopper
26. Which of the following animals have three main stages in their life cycle?
- (1) dragonfly, hen and ant  
 (2) ladybird, rabbit and hen  
 (3) hen, dragonfly and ladybird.  
 (4) hen, cricket and robin
27. Which one of the following diagrams shows the order of stages and processes in the life cycle of a flowering plant?

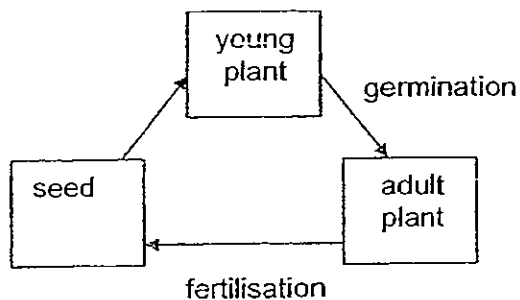
(1)



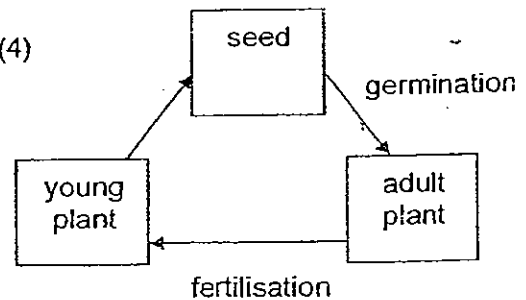
(2)



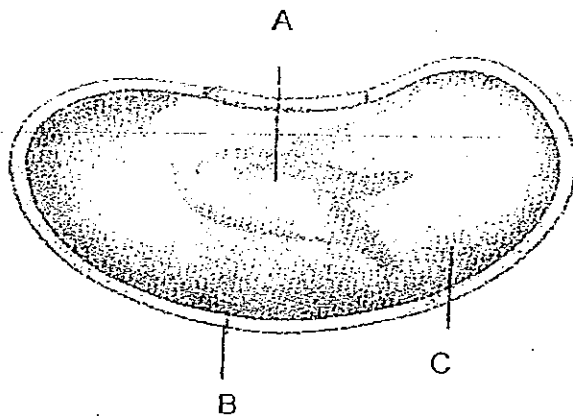
(3)



(4)



28. Look at the picture of the bean seed below.



Which of following shows the correct labelling of the parts of the bean?

	A	B	C
(1)	Baby plant	Seed coat	Seed leaf
(2)	Baby plant	Seed leaf	Seed coat
(3)	Seed coat	Baby plant	Seed leaf
(4)	Seed coat	Seed leaf	Baby plant

29. What is the similarity between the life cycle of a plant and the life cycle of a cockroach?

- (1) They both have 3 stages.
- (2) They both have 4 stages.
- (3) They both have the egg stage in their life cycle.
- (4) They take the same length of time to complete their life cycle.

30. Which of the following statements about the parts of a plant are true?

- A: Fruits develop into flowers.  
 B: Most seeds develop into new plants.  
 C: Roots take in water from the soil.  
 D: The leaves make food using energy from the sun.

- (1) A and B
- (2) B and C
- (3) B, C and D
- (4) A, B, C and D

NAME : \_\_\_\_\_

CLASS : \_\_\_\_\_

**METHODIST GIRLS' SCHOOL (PRIMARY)**

**MID -YEAR EXAMINATION 2008**

**PRIMARY THREE**

**SCIENCE**

**BOOKLET B**

BOOKLET	MARKS
A	60
B	40
TOTAL	

Total time for Booklets A and B : 1 hr 30 min.  
Booklet B : 13 Questions ( 40 marks)

**DO NOT OPEN THIS BOOKLET UNTIL YOU ARE TOLD TO DO SO.  
FOLLOW ALL INSTRUCTIONS CAREFULLY.**

**Section B : ( 40 marks )**

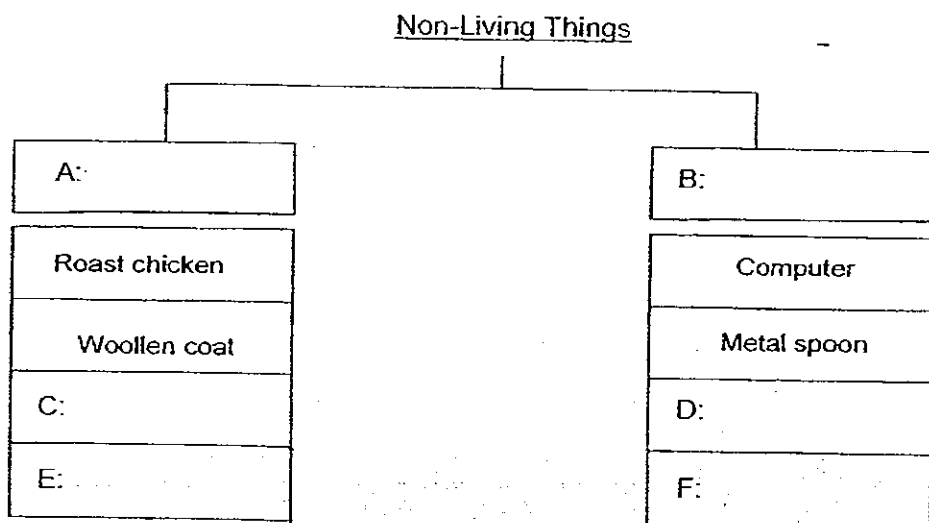
**Write the answers in the blanks provided.**

31.(a) The following objects can be classified into two different groups. Give a suitable heading for the groups by filling in boxes A and B. (1 mark)

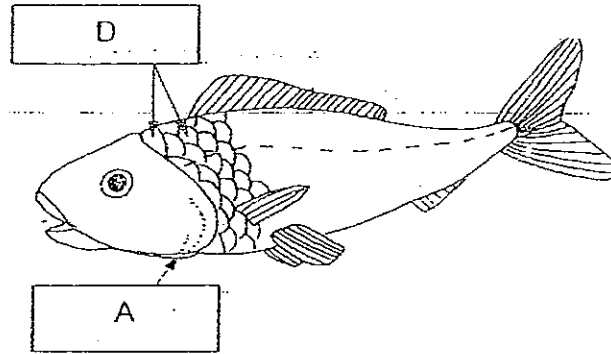
(b) Fill in the boxes C, D, E and F with the items given below.

(2 marks)

porcelain bowl	plastic ruler
paper cup	silk scarf



32. Refer to the picture below and answer the following questions.



(a) Why is part D of the fish important? (1 mark)

---

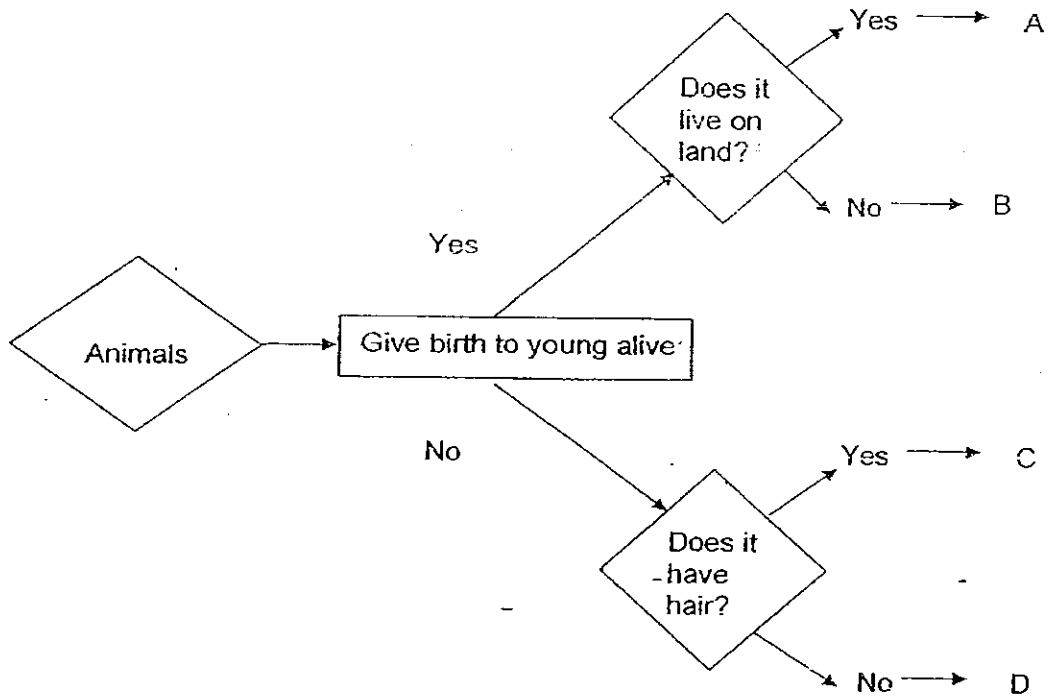
(b) What can be found under part A of the fish? (1 mark)

---

(c) Give one reason why the part found under part A is important to the fish. (1 mark)

---

33. Study the flowchart below.



Identify the correct letters that represent each of the following animals below.  
(4 marks)

(a) Platypus: \_\_\_\_\_

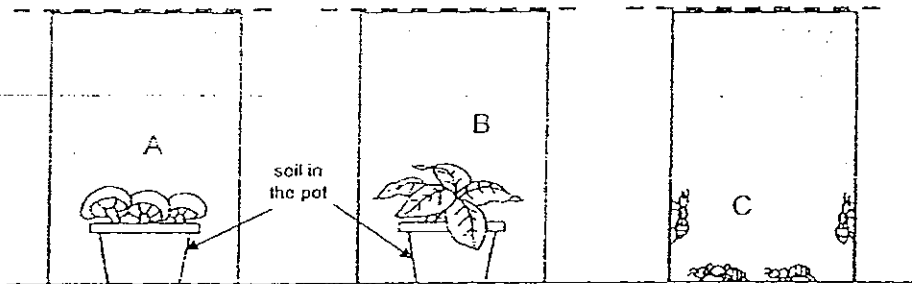
(b) Bat : \_\_\_\_\_

(c) Shark : \_\_\_\_\_

(d) Swordtail: \_\_\_\_\_



34. The diagram below shows three glass tanks that are covered with wire gauze. They each contain a different living thing (A, B and C) and are placed in a sunny place and given water daily.



- (a) After 10 days, which living thing/s will still be growing well? (1 mark)

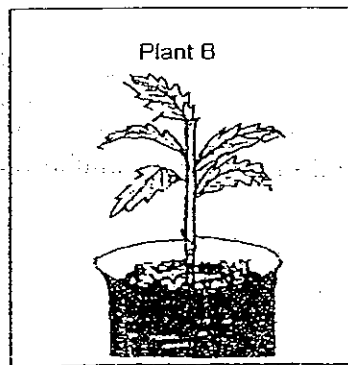
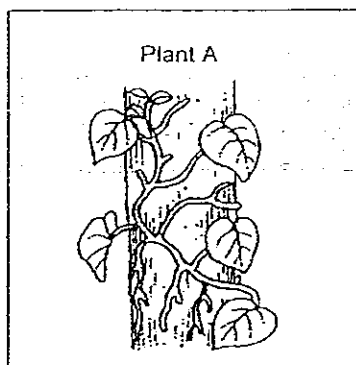
\_\_\_\_\_

- (b) Explain your answer in (a). (1 mark)

\_\_\_\_\_

\_\_\_\_\_

35. Based on what you see in the pictures, state 2 differences between the two plants below. (Do not compare their sizes) (2 marks)

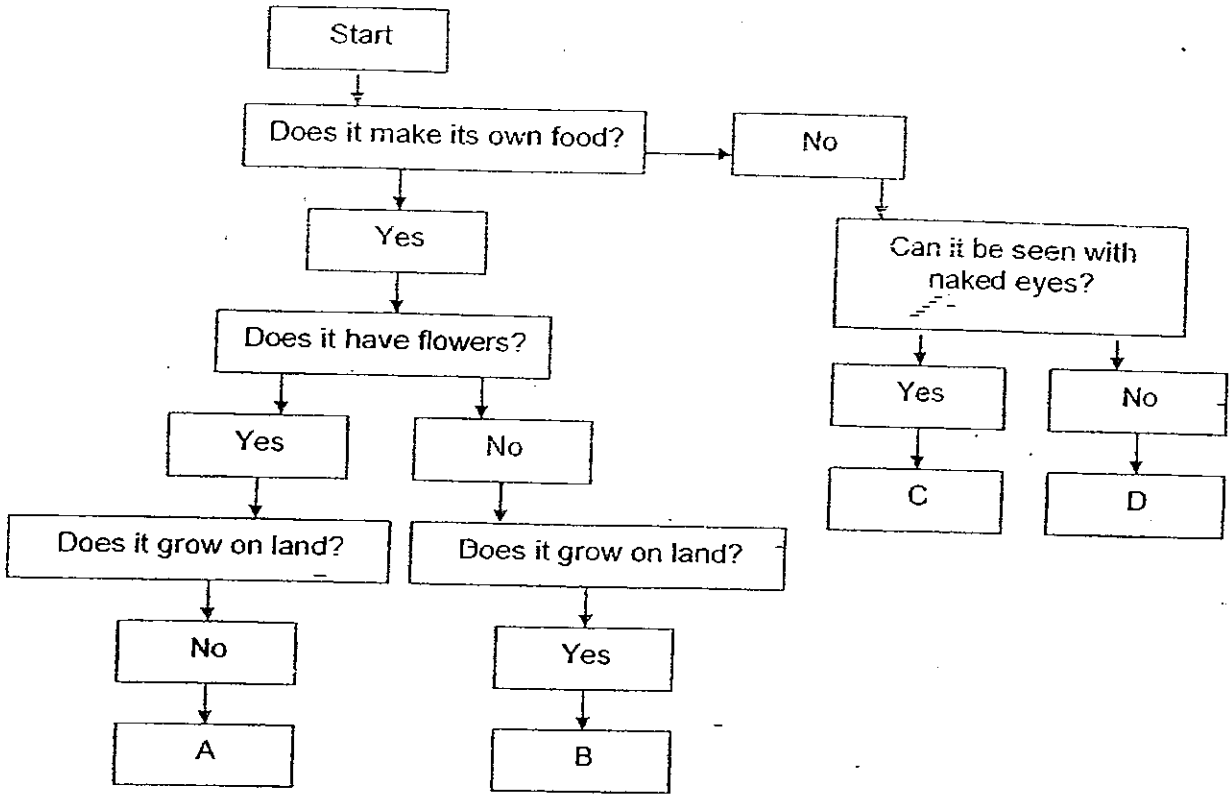


- (a) \_\_\_\_\_

- (b) \_\_\_\_\_

\_\_\_\_\_

36. Look at the flowchart below.



Give an example of A, B, C and D.

(4 marks)

- A: \_\_\_\_\_
- B: \_\_\_\_\_
- C: \_\_\_\_\_
- D: \_\_\_\_\_

37. Tom had 2 pieces of bread A and B. On bread A, he sprinkled some water but on bread B, he did not. He then left bread A and B in a closed cupboard.

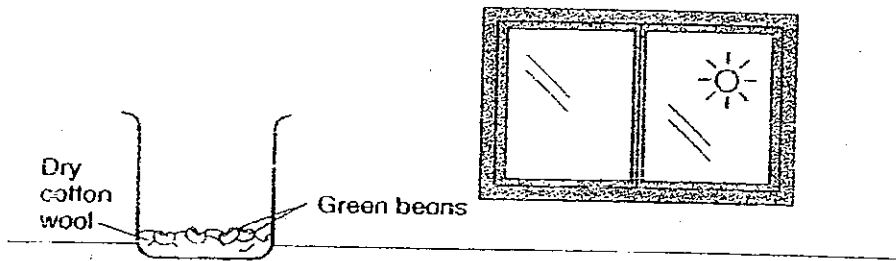
(a) What could he observe on bread A and B after 2 weeks? (1 mark)

(b) Would bread A and bread B look exactly the same? Explain your answer. (2 mark)

38. For the following sentences, put a tick  $\checkmark$  for the statements that are true or false. (3 marks)

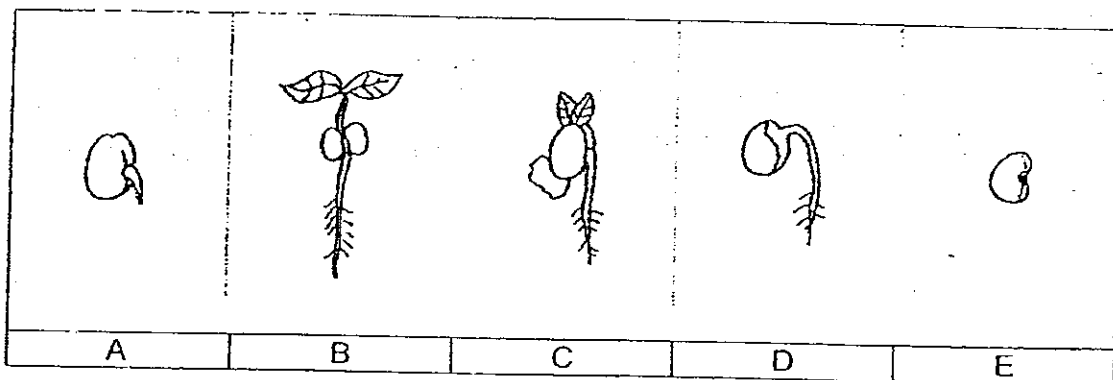
	True	False
Fungi reproduce from spores.		
Bacteria grow well in dry places only.		
All fungi are inedible.		
Fungi are living things but bacteria are non-living things.		
Both bacteria and fungi respond to changes in their surroundings.		
Food that is past the expiry date may be contaminated with bacteria.		

39. Study the diagram given below.



- (a) State whether the green beans would germinate or not. (1 mark)
- 
- (b) Give a reason to support your answer in (a). (1 mark)
- 
- (c) Name 3 conditions that must be present for a seed to germinate? (1 mark)
- 

40. The drawings below show the different stages of growth of a green bean seed.



- (a) Rearrange the pictures by writing down the letters A to E to show the correct order of growth of the green bean seed.

(1 mark)

1	2	3	4	5

What grows out of the seed first?

(1 mark)

---

(c) (i) At which stage can the seedling start to make its own food?

(1 mark)

---

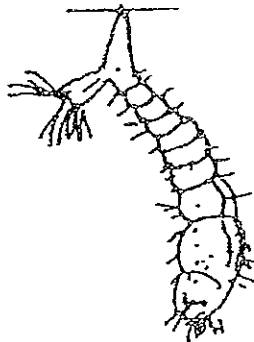
(ii) Give a reason for your answer in (c)(i).

(1 mark)

---

---

41. The diagram below shows one of the stages of an animal.



(a) What is the **main** activity that takes place in the diagram above?

(1 mark)

---

(b) Name the next stage of the life cycle of the animal shown above.

(1 mark)

---

(c) Give another example of an animal which has the same number of life cycle stages as the animal above.

(1 mark)

---

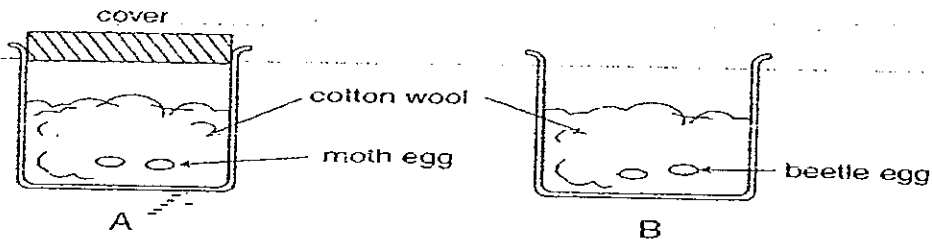
(d) Suggest one way you can prevent the breeding of mosquitoes in your home.

(1 mark)

---

---

42. Grace wanted to find out if the moth or beetle has a longer life cycle. She carried out the experiment as shown below and waited for the eggs to hatch.



- (a) Her sister said it was not a fair test. What should Grace do to make it a fair test? (1 mark)

---

- (b) Write down one similarity between the life cycle of the moth and the beetle. (1 mark)

---

43. John wants to conduct an experiment to find out whether temperature affects how quickly food turns bad. He places some food on two plates and leaves one of them in the cupboard and the other in the open field under the hot sun.

- (a) How would John know when the food has turned bad? (1 mark)

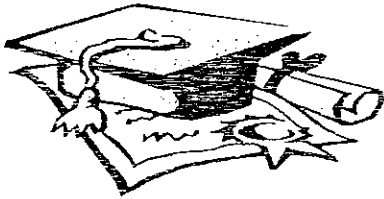
---

- (b) Name 2 variables that must be kept the same to make the experiment a fair one. (2 marks)

(i) \_\_\_\_\_

(ii) \_\_\_\_\_

End of paper  
Have you checked your work?



# ANSWER SHEET

EXAM PAPER 2008

SCHOOL : MGS PRIMARY SCHOOL  
SUBJECT : PRIMARY 3 SCIENCE

TERM : SA 1

Q1	Q2	Q3	Q4	Q5	Q6	Q7	Q8	Q9	Q10	Q11	Q12	Q13	Q14	Q15	Q16	Q17
4	3	2	4	4	4	1	3	3	1	2	2	3	3	3	1	3

Q18	Q19	Q20	Q21	Q22	Q23	Q24	Q25	Q26	Q27	Q28	Q29	Q30
3	4	3	4	2	2	2	4	4	1	1	1	3

31)A: Once alive      B: Never alive      C: paper cup  
D: plastic ruler      E: silk scarf      F: porcelain bowl

32)a)It helps to protect the fish.  
b)Gills.  
c)It help the fish to breathe.

33)a)C   b)A   c)D   d)B

34)a)B.  
b)B can make its own food while A and C cannot.

35)a)Plant A has entire edge leaves while.  
Plant B has jagged edges.  
b)Plant A is growing on a tree while Plant B is growing in a pot.

36)A: Water Lily   B: Moss   C: Mushroom   D: Amoeba

37)a)Bread A and B will have bread mould on it.  
b)No, bread A will have more mould because bread mould grows better up to water.

38)a)T b)F c)F d)F e)T f)T

39)a)No.

b)They do not have water to germinate.

c)Water, warmth and air.

40)a)1)E 2)A 3)D 4)C 5)B

b)The roots.

c)i)At stage C.

ii)The plant have leaves, in leaves there are chlorophyll, chlorophyll makes food for the plant.

41)a)Moulting and eating.

b)Pupa

c)Butterfly

d)Cover bamboo pole holders when not in use.

42)a)She should take off the cover from A.

b)They both have 4 stages.

43)a)It will have mould on it.

b)i)The same type of food.

ii)The same size of the plate.