

SINGAPORE CHINESE GIRLS' SCHOOL
FIRST SEMESTRAL ASSESSMENT 2009
PRIMARY 3
SCIENCE

Name: _____ () Date _____

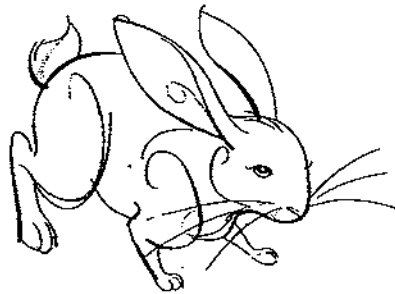
Class: Primary 3 ~~SY/CA/G~~ SE/P

Duration : 1 hour

Part 1 (15 X 2 marks)

For each question from 1 to 15, four options are given. One of them is the correct answer. Make your choice (1, 2, 3 or 4). Shade the correct oval (1, 2, 3 or 4) in the Optical Answer Sheet.

1. The picture below shows a rabbit. Which of the following is needed to keep it alive?



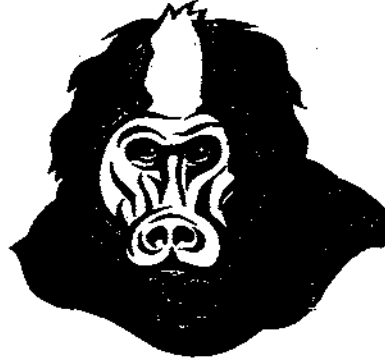
- ~~A~~: It needs food to give it energy.
~~B~~: It needs sunlight to make food.
~~C~~: It needs air to respire (breathe).
~~D~~: It needs water to keep it hydrated.

- (1) A and C only ~~(3) A, C and D only~~
 (2) B and D only (4) B, C and D only

2. The animals listed below reproduce in different ways. Look at the classification table and see which animal's method of reproduction has been ticked **incorrectly**.

	Types of Animals	Lay eggs	Give birth to young
(1)	Horse		✓
(2)	Toad	✓	
(3)	Deer		✓
(4)	Crocodile	✓	✓

3. Susan went to the zoo and wanted to find out more about a mandrill. She was given a picture of it. She found out that it has hair and feeds its young with milk. Which group of animals should she place the mandrill?



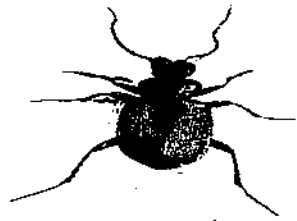
~~(1) Mammals~~
(2) Reptiles

(3) Birds
(4) Fish

4. Sheryl found hundreds of eggs in water. They were covered by a jelly-like substance. She saw a terrapin in the water and said that the eggs belonged to the terrapin. Why is she wrong?

(1) Terrapins do not lay eggs.
(2) Terrapins live on land only.
(3) Terrapins lay only 1 egg each time.
~~(4) The eggs of the terrapins do not have a jelly-like covering.~~

5. The picture below shows an animal. Using only your sense of sight, what can you tell about this animal?



A: It has 6 legs.
B: It has a pair of feelers.
C: It has 3 body parts.
D: It has a hard body covering.

(1) A only
(2) A, C and D only

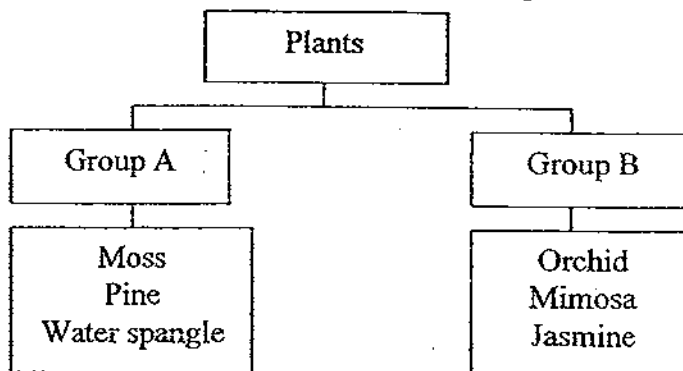
(3) A and C only
~~(4) A, B and C only~~

6. Joanne's teacher told her that many animals are becoming endangered due to Man's action. Which of the following are some harm caused by Man?

- A: Throwing rubbish into rivers
- B: Factories discharging wastes into the seas
- C: Oil tankers spilling oil into the seas.
- D: Chopping down trees to make way for land use.

- (1) A and B only
- (2) C and D only
- (3) A, C and D only
- ~~(4) A, B, C and D~~

Study the classification table below and answer questions 7 and 8.



7. Which of the following would be suitable headings for Groups A and B?

	Group A	Group B
(1)	Water Plants	Land Plants
(2)	Poisonous Plants	Non-poisonous Plants
(3)	Non-flowering Plants	Flowering Plants
(4)	Scented Plants	Non-scented Plants

8. Vincent was given a Lantana and a Morning Glory. Which group do they belong to?

	Lantana	Morning Glory
(1)	A	A
(2)	A	B
(3)	B	A
(4)	B	B

9. Mosses are a special group of plants that reproduce by _____.

(1) seeds

(3) stems

~~(2) spores~~

(4) leaves

10. Jesslyn found some wild mushrooms by the roadside and wondered how they obtained their food. She checked with her 4 classmates and they told her different stories. Read the following statements and pick the correct answer.

Allan: Mushrooms make their own food.

Belle: Mushrooms feed on other live plants.

Caryn: Mushrooms feed on dead plants and animals

Dylan: Mushrooms feed on live animals that crawl on them.

(1) Allan

~~(2) Belle~~

(2) Belle

(4) Dylan

11. Evelyn's mother cooked some Jew's ears and told her that they belong to the same family as Mushrooms. Which of the following can be classified in the same group as well?

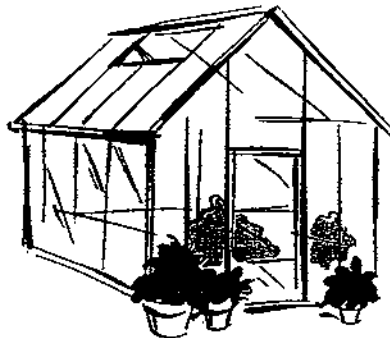
~~(1) Bread~~

(3) Palm

(2) Clover

(4) Tree Fern

12. Joelle's pen pal lives in the United Kingdom. She said she was building a greenhouse so that her delicate plants would survive the cold winter. What property of glass made it suitable for building a greenhouse?



(1) It is flexible.

(2) It is easily broken.

~~(3) It is transparent.~~

(4) It is less durable as compared to cardboard.

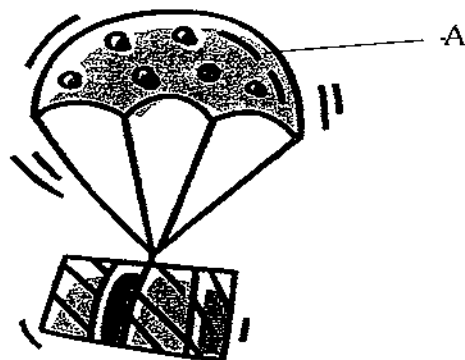
13. Florence's grandfather showed her an umbrella that he had kept for more than 50 years. She was shocked to find out that the umbrella that her grandfather used when he was young was made with paper! Her grandfather then told her that the paper had been waxed. What do you think was the main reason?

- (1) To make it heavier
- (2) To make it more flexible
- (3) To make it more attractive
- ~~(4) To make it waterproof~~

14. Look at the classification table below. Which of the following has been classified correctly?

	Float	Sink
(1)	Ice-cream stick	Styrofoam ball
(2)	Ceramic doll	Cotton shirt
(3)	Steel bar	Glass container
(4)	Ice-cream stick	Styrofoam ball

15. Jacky was told to design a toy parachute that could fly the longest in the air. What material would you use for the part labelled A?



	Material A	Reason
(1)	Wool	It is flexible.
(2)	Cotton	It is translucent.
(3)	Denim	It is durable.
(4)	Denim	It is durable.

SINGAPORE CHINESE GIRLS' SCHOOL
FIRST SEMESTRAL ASSESSMENT 2009
PRIMARY 3
SCIENCE

Name: _____ () Date: _____

Class: Primary 3 SY/C/G/SE/P

Duration : 1 hour

Components	Marks Obtained	Total Marks
Part I		30
Part II		20

Parent's Signature :

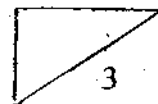
Part II (20 marks)

Answer all the following questions.

16. Alan and Sue were tasked by their teacher to work on a project on animals. Both observed that the dolphin has hair and a tail. It moves like a fish in water. They were also told the dolphin has lungs and comes up for air. Below is the conclusion written by the 2 children on dolphins.

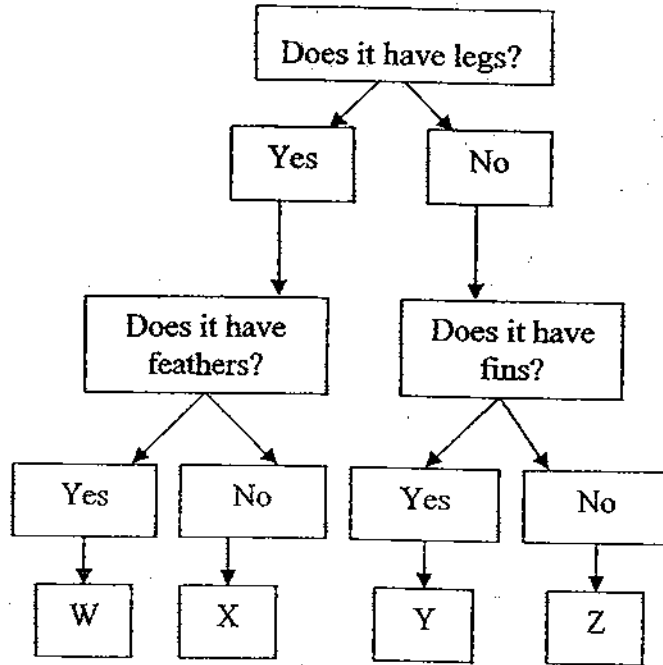
	Conclusion
Alan	The dolphin is a fish.
Sue	The dolphin is a mammal.

- (a) Which child do you agree with? (1m)
- _____
- (b) List down one characteristic found in the description that helps you make your choice. (1m)
- _____
- (c) List down another characteristic this group of animals has. (Not found in the description above). (1m)
- _____



17. There are many types of animals. Scientists use a branching key to classify them. To identify an animal, start at the top of the key and move on down by answering

Yes or No

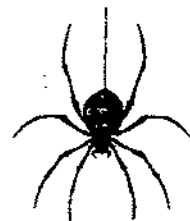


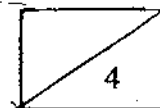
Use the branching key to identify the letter which represents each of the animals shown below. (4m)







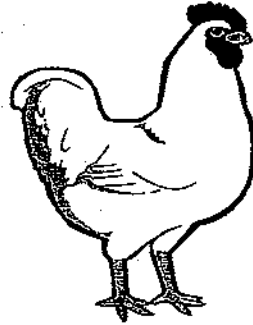




18. Look carefully at the 2 pictures of these 2 animals. Based on what you can see only, list down 1 similarity and 1 difference between the 2 animals. (Do not mention colour and size.) (2m)



Animal X



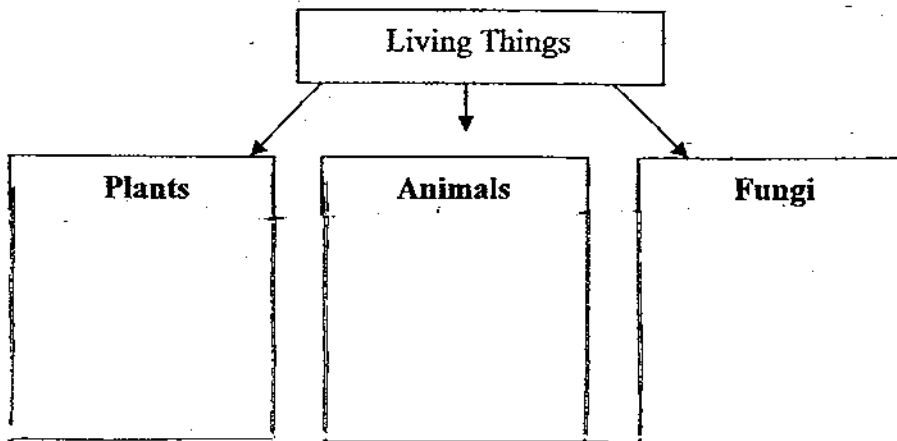
Animal Y

(a) Similarity _____

(b) Difference _____

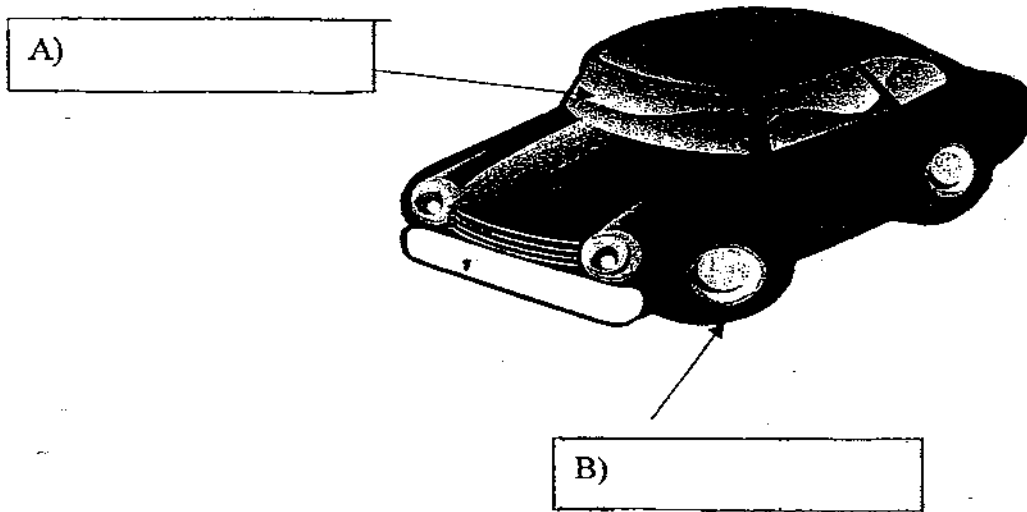
19. Complete the classification charts below with the list of living things in the box. (4 m)

Mushroom	Mango	Goat	Earthworm
Angsana	Lion	Puffball	Mould



6

20a). Name the parts A and B of this diagram of a car. (2m)



(b) State the materials used to make Part A. Explain why this materials is suitable.

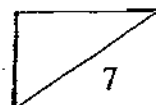
Part	Material Used	Reason
A	(1m)	(1m)

21. Some car seats are covered with fabric or leather. Choose one of the materials and state the reason why it is better than the other.

Material chosen: _____ (1 m)

Reason: _____
 _____ (2m)

End of Paper. Please check your work





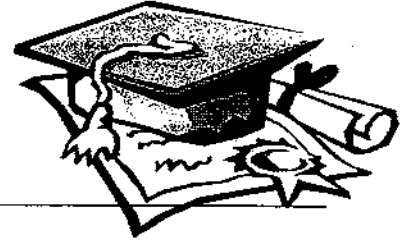


ANSWER SHEET

EXAM PAPER 2009

**SCHOOL : SCGS PRIMARY
SUBJECT : PRIMARY 3 SCIENCE**

TERM : SA1



Q1	Q2	Q3	Q4	Q5	Q6	Q7	Q8	Q9	Q10	Q11	Q12	Q13	Q14	Q15
3	4	1	4	4	4	3	4	2	3	1	3	4	1	3

16)a)Sue.

b)It has hair on its body./ It has lungs.

c)They are warm-blooded animals. It gives birth to its young alive.
It feeds its young with milk./ It suckles its young.

17)W, Z, Y, X

18)a)Similarity: Both have a beak.

b)Difference: Animal X has a longer beak than Animal Y.

19)Plants: Angsana, Mango / Animals: Goat, Lion, Earthworm
Fungi: Mould Puffball, Mushroom

20)a)A: Windscreen B: Tire

b)A: Glass: The glass is transparent and allows light to pass through so that the driver is able to see.

21)Material chose: Leather.

Reason: Leather is Waterproof/ stronger/ smoother/ easier to clean.