

CATHOLIC HIGH SCHOOL

PRIMARY THREE

SEMESTRAL ASSESSMENT 1, 2010

SCIENCE

Name: \_\_\_\_\_

Class : Primary 3 \_\_\_\_\_

Date : 25 May 2010

BOOKLET A

30 Questions

60 Marks

Total Time for Booklets A & B : 1 hour 30 min

**Instructions to Candidates**

Do not open this booklet until you are told to do so.

Follow all instructions carefully.

Answer all questions.

**Section A : Multiple Choice Questions (60 marks)**

For each question from 1 to 30, four options are given. One of them is the most suitable answer. Make your choice (1, 2, 3 or 4) on the Optical Answer Sheet.

1. Which of the following can move by itself?

- Car
- Frog
- Wheelchair
- Toy Caterpillar

2. Study the four statements made by four pupils below.

Pupils	Statements
Alex	All living things need air.
Bob	All living things need water.
Chris	All living things need food.
Derick	All living things need warmth.

Who has made a correct statement?

- Alex and Bob
- Bob and Chris
- Alex, Bob and Chris
- Alex, Bob, Chris and Derick

3. The table below shows some information about an animal.

Week	Height / cm
2	50
4	100
6	150

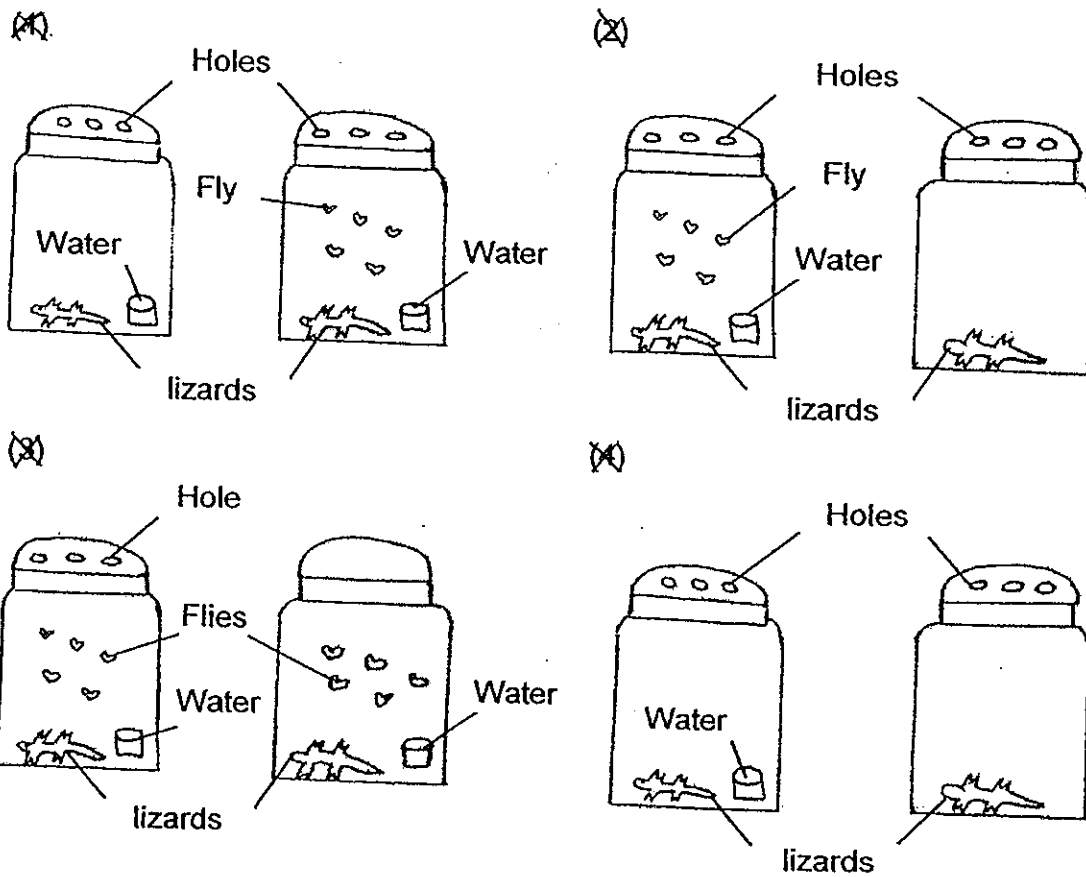
What can you conclude from the information given in the table?

- (1) The animal is dead after six weeks.
  - ~~(2)~~ The animal is growing as the weeks go by.
  - (3) The animal is reproducing as the weeks go by.
  - (4) The animal is moving over a distance as the weeks go by.
4. Read the statements below.
- A The bird flew away when a gun shot is fired.
  - B Peter moved his hands away after touching a hot kettle.
  - C The tigers sniffed the air and followed the smell of the deer.
  - D The leaves of a mimosa plant folded when someone touched it.

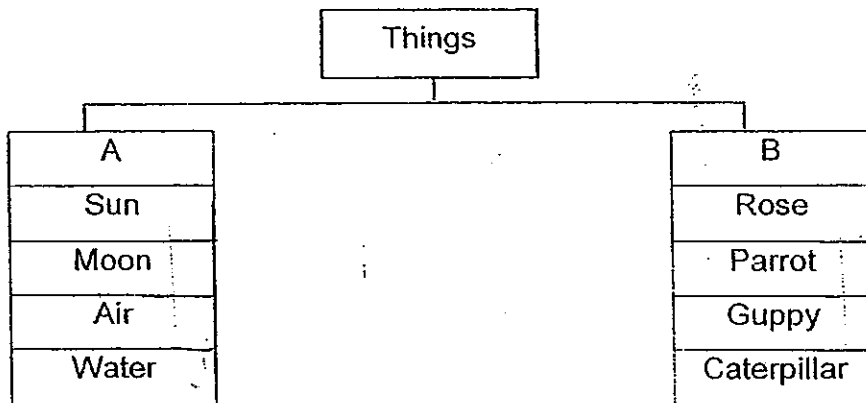
The above examples show that living things \_\_\_\_\_.

- (1) can grow
- (2) need air, food and water
- (3) can only move very slowly.
- ~~(4)~~ respond to changes in their surroundings ✓

5. Which of the following set-ups should Max use if he wants to find out whether a lizard needs food to live?



6. Study the classification table below.



Which of the following are the correct headings for A and B?

	A	B
<input checked="" type="checkbox"/>	Living Things	Non-Living Things
<input checked="" type="checkbox"/>	Non-Living Things	Living Things
<input checked="" type="checkbox"/>	Things found in the sky	Things found on land
<input checked="" type="checkbox"/>	Things that cannot move	Things that can move

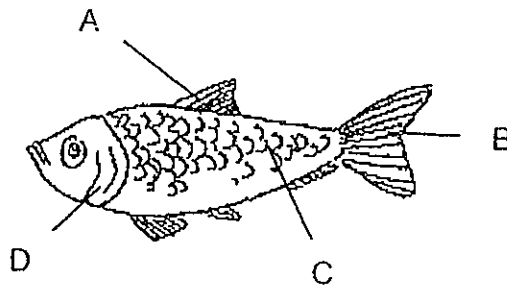
7. Which of the following is a similarity between the birds and insects?

- They both can fly.
- They both lay eggs.
- They both have wings.
- They both have feathers on their bodies.

8. Which of the following is true about fungi?

- All fungi are edible.
- All fungi are poisonous.
- All fungi feed on other animals.
- All fungi reproduce from spores.

9. Which part(s) of the fish help it to swim in the water?



- A only
- B only
- A and B only
- C and D only

10. The table below shows two groups of animals.

Fishes	Mammals
Guppy	Cat
Whale	Sheep
Catfish	Dolphin
Clownfish	Giraffe

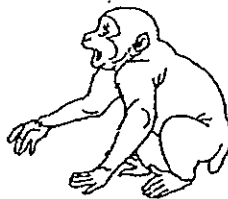
Which of the following has been grouped wrongly?

- Sheep
- Whale
- Dolphin
- Catfish

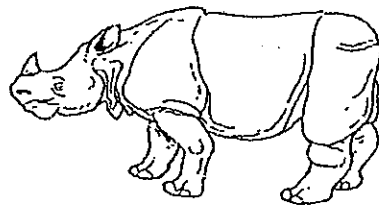
11. Look at the pictures below.



Fly



Monkey



Rhinoceros

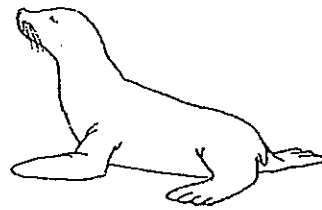
Which of the following is a common characteristic to the three animals?

- They all live on trees.
- They all have four legs.
- They all are plant-eaters.
- They all reproduce by giving birth to their young alive.

12. Look at the pictures below.



Spiny anteater



Seal

How are the two animals similar?

- They both lay eggs.
- They both live in the sea.
- They are both covered with scales.
- They are both able to produce milk for their young.

13. Look at the two pictures below.



Toadstool



Jew's Ear

How are the two named organisms similar?

- A They reproduce by spores.
  - B They reproduce by seeds.
  - C They cannot make its own food.
  - D They do not contain chlorophyll.
- 
- A and C only
  - B and D only
  - A, C and D only
  - B, C and D only



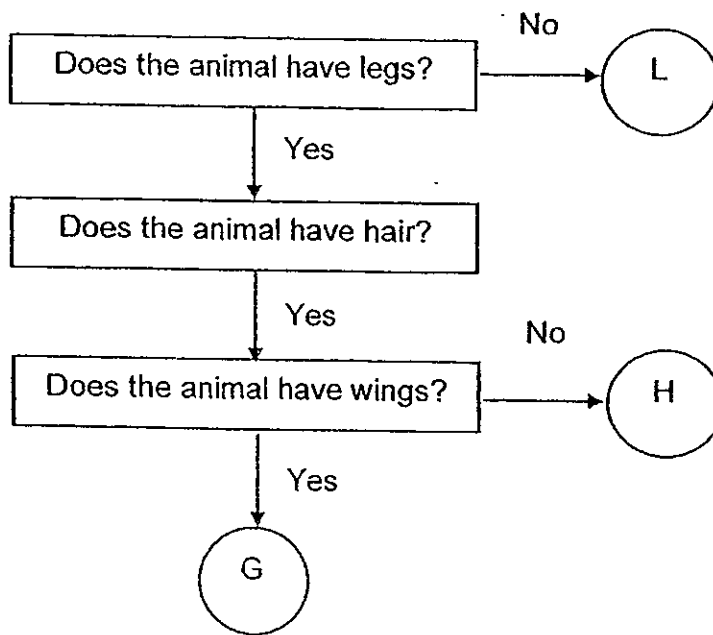
14. Study the classification table below.

Group A	Group B	Group C
Dolphin	Crab	Emu
Monkey	Prawn	Chicken
Platypus	Tortoise	Sparrow

How are the above animals grouped?

- According to where they live.
- According to the way they move.
- According to the types of food they eat.
- According to their outer body coverings.

15. Study the flow chart below.



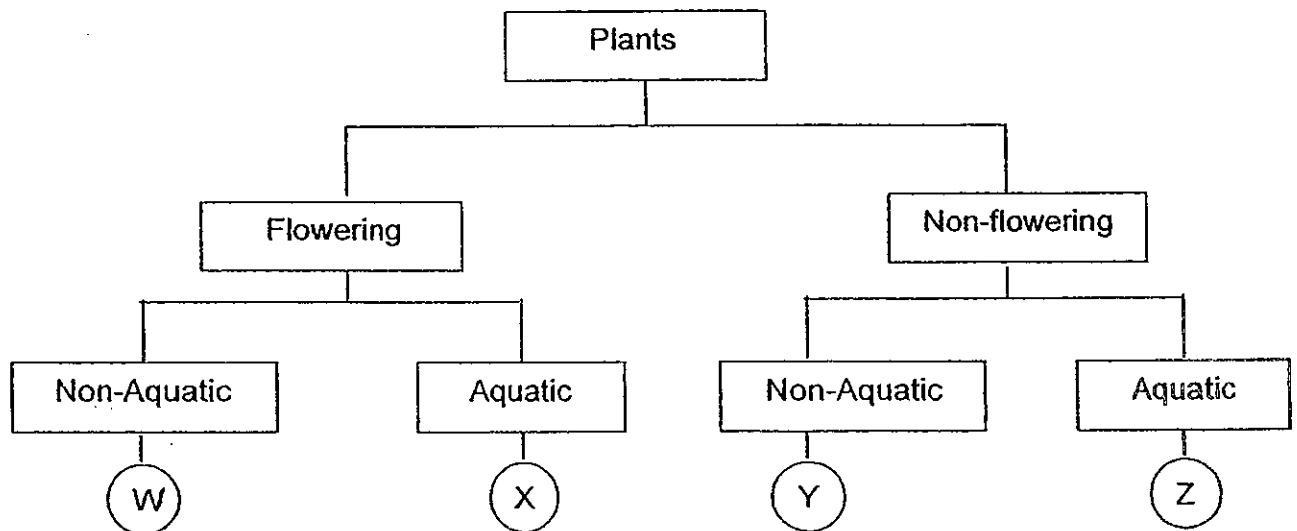
Based on the information above, which of the following is best represented by G?

- Bat.
- Guppy.
- Penguin
- Platypus

16. The table below gives information on two plants, E and F, based on two characteristics. A tick (✓) shows that the plant has the characteristic.

Plant \ Characteristics	E	F
Bears fruit	✓	
Grows in water	✓	

From the information given, where do plants E and F belong in the classification table below?



	Plant E	Plant F
(1)	W	Y
<del>(2)</del>	X	Y
(3)	X	Z
(4)	Y	W

17. Look at the classification table below.

Group A	Group B	Group C
T-shirt	Balloon	Comb
Towel	Hose	Dustbin
Jacket	Car Tyre	Ball Point Pen

Which of the following can be put in Group C?

- Book
  - Mirror
  - Necktie
  - Food Wrap
18. "Oh! My hair still gets wet although I am wearing a hat."  
What material do you think the hat is made of?

- Metal
- Plastic
- Fabric
- Rubber

19. Which of the following materials comes from the ground?

- Iron
- Silk
- Plastic
- Rubber

20. Which of the following are the properties of a mirror?

- A Hard
- B Smooth
- C Transparent

- A and B only
- A and C only
- B and C only
- A, B and C

21. The table below shows four objects that are made from different materials.

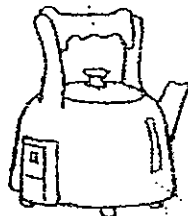
Material	Object
Steel	Car
Clay	Flower Pot
Wood	Toothpick
Rubber	Bottled Drink

Which of the following has been placed wrongly in the table?

- Car
- Toothpick.
- Flower Pot.
- Bottled Drink

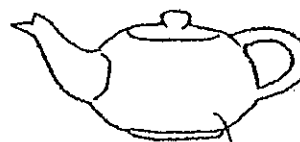
22. Which of the following objects can be made of only one material?

A



Kettle

B



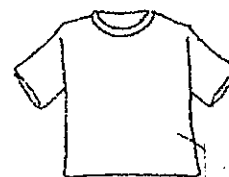
Teapot

C



Iron

D



T-shirt

- A and C only
- B and D only
- A, B and C only
- B, C and D only

23. Study the table below.

Group K	Group L
Pillow	Vase
Dress	Beaker
Necktie	Frying Pan

How are the things in Group K different from those in Group L?

	Group K	Group L
A	Soft	Hard
B	Not waterproof	Waterproof
C	Float in water	Sink in water
D	Do not break easily when dropped	Break easily when dropped

- A and B only
- (2) C and D only
- (3) A, B and D only
- (4) B, C and D only

24. A boy put a marble and a table tennis ball into a big bowl as shown below. He then filled the bowl with tap water to more than three quarters full.



What would he observe?

- Both the marble and the table tennis ball would float.
- Both the marble and the table tennis ball would remain at the bottom of the bowl.
- The table tennis ball would float but the marble would remain at the bottom of the bowl.
- The marble would float but the table tennis ball would remain at the bottom of the bowl.



25. Which of the following objects is the hardest?

~~(A)~~

~~(B)~~

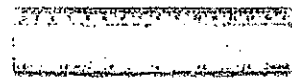
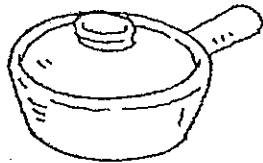


Metal spoon

Eraser

~~(C)~~

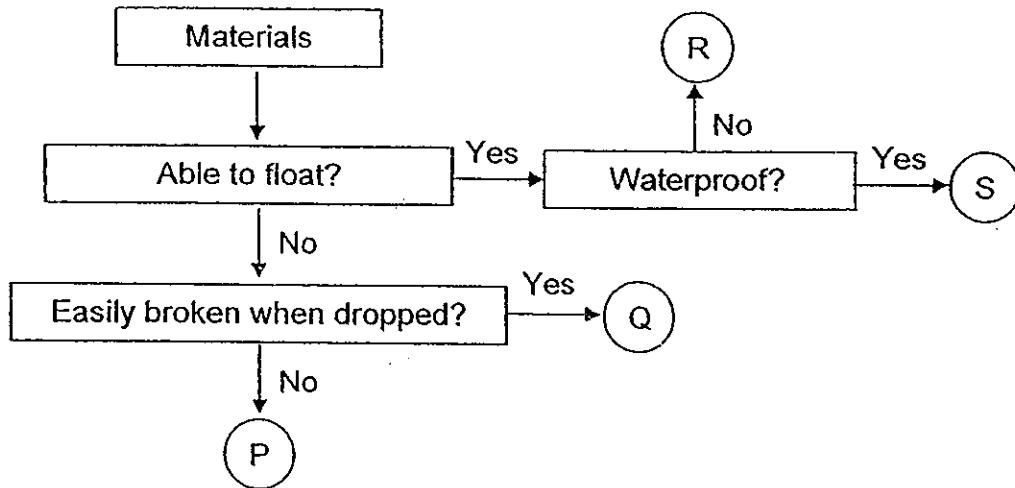
~~(D)~~



Clay pot

Plastic ruler

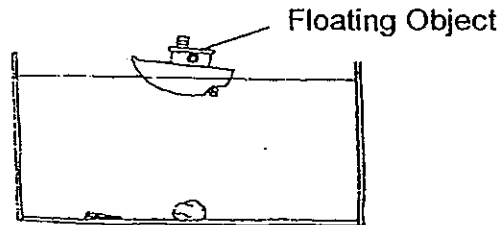
26. Study the flowchart below.



Which of the following can P, Q, R and S be?

	P	Q	R	S
<del>(X)</del>	Glass	Metal	Paper	Plastic
<del>(X)</del>	Metal	Glass	Plastic	Paper
<del>(X)</del>	Paper	Plastic	Metal	Glass
<del>(X)</del>	Metal	Glass	Paper	Plastic

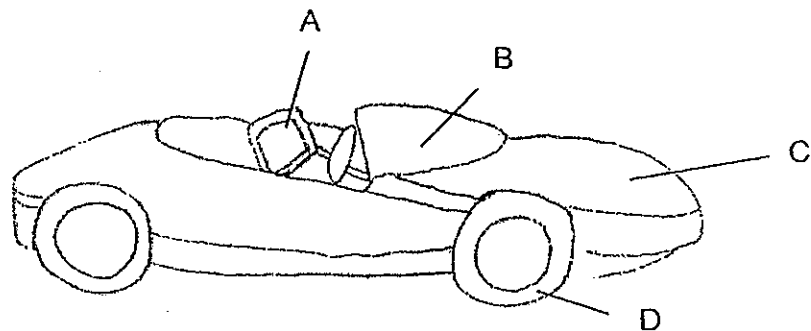
27. The floating object shown in the diagram below is made of a material that is light and waterproof.



Which of the following is a suitable material?

- Paper
- Cotton
- Plastic
- Ceramic

28. Look at the picture below.



Which part of the car is made from metal?

- A
- B
- C
- D

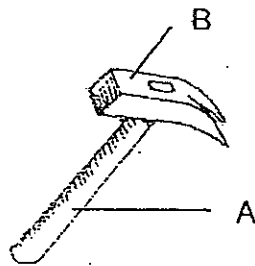
29. Study the table below.

Object \ Properties	J	K	L
Bends easily	√	√	√
Absorbs water	x	√	√
Gets stretched easily	√	√	x

Which of the following group best fits the properties in the table?

	J	K	L
(X)	Swim suit	Paper	Rubber Band
(X)	Paper	Swim suit	Rubber Band
(X)	Paper	Rubber Band	Shirt
(4)	Rubber Band	Sponge	Paper

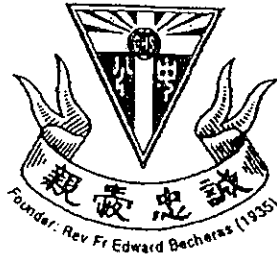
30. Look at the picture below.



Which of the following are most suitable for making parts A and B?

	A	B
<input checked="" type="checkbox"/>	Metal	Wood
<input checked="" type="checkbox"/>	Wood	Metal
<input checked="" type="checkbox"/>	Plastic	Wood
<input checked="" type="checkbox"/>	Wood	Rubber

- End of Section A-



CATHOLIC HIGH SCHOOL

PRIMARY THREE

SEMESTRAL ASSESSMENT 1, 2010

SCIENCE

Name: \_\_\_\_\_ (

Class : Primary 3 \_\_\_\_\_

Date : 25 May 2010

BOOKLET B

14 Questions

40 Marks

Total Time for Booklets A & B : 1 hour 30 min

**Instructions to Candidates**

Do not open this booklet until you are told to do so.

Follow all instructions carefully.

Answer all questions.

Parent's Signature: \_\_\_\_\_

Date: \_\_\_\_\_

Score	
Section A	60
Section B	40
Total	100

**Section B : Open-Ended Questions (40 marks)**

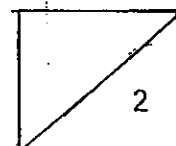
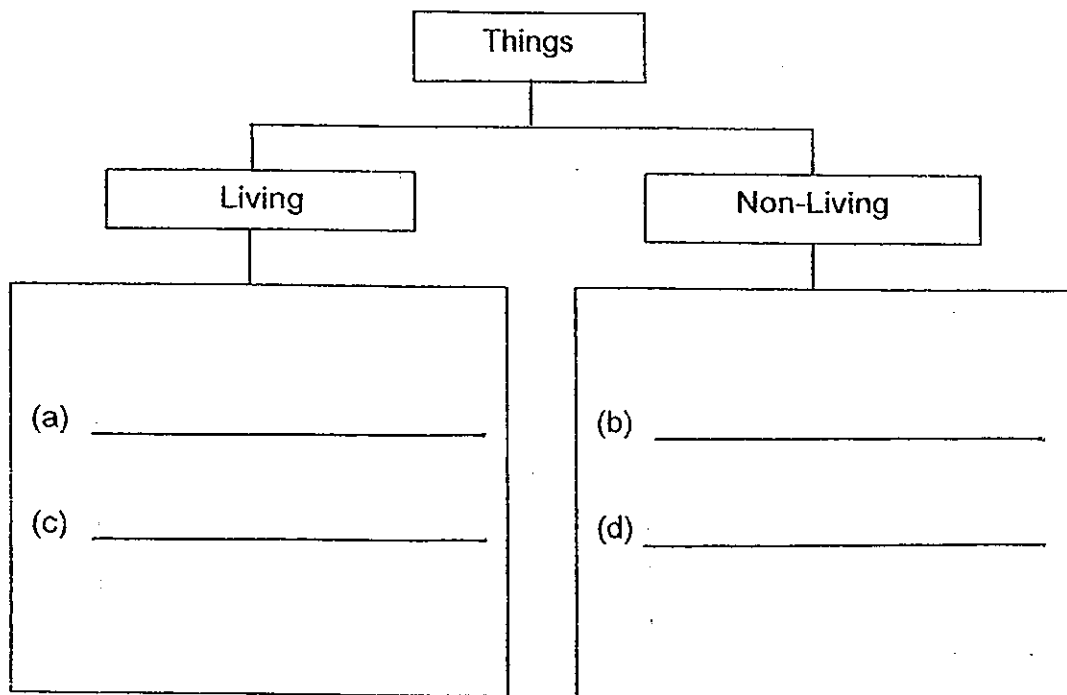
Read the following questions carefully and write your answers in the space provided. The maximum marks that can be awarded are shown at the end of each question or part-question.

31. John has some objects.

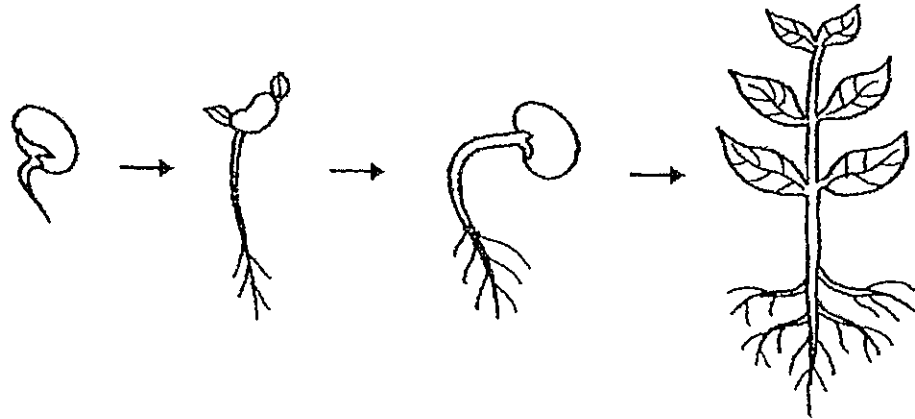
candle	hibiscus plant
uncooked seeds	cooked seeds

Put the objects correctly into the classification table below.

[2]



32. Max observed some seeds that had been soaked in water and sketched the following diagram over a period of 8 days.



(a) Are the seeds living or non-living things?

[1]

---

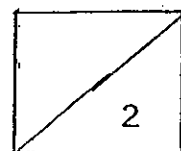
---

(b) Why do you say so?

[1]

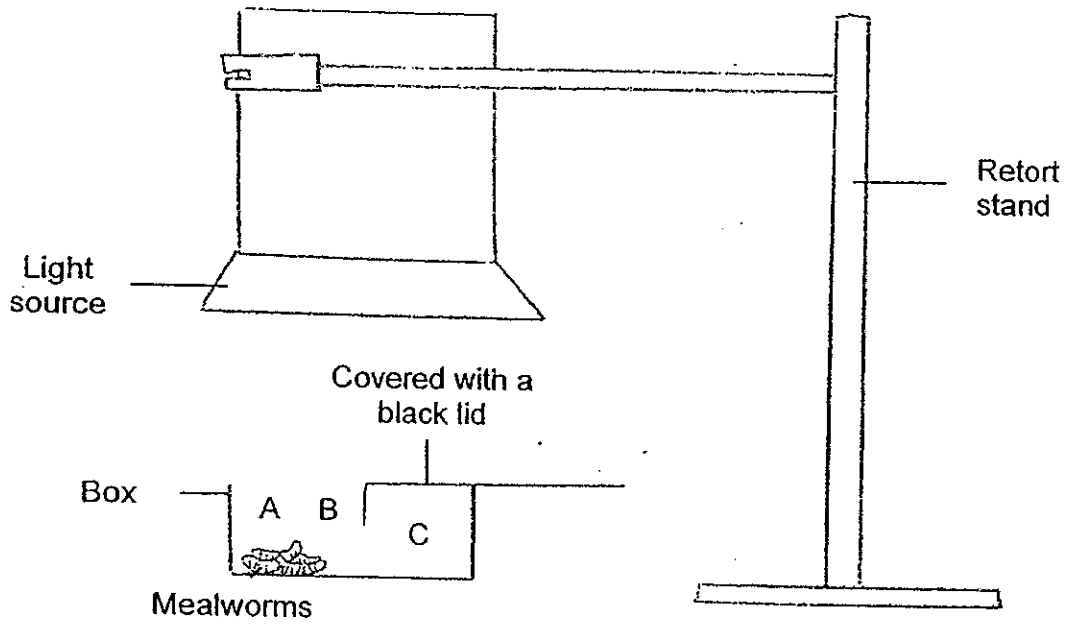
---

---





33. Susan carried out an experiment as shown in the set-up below. She placed three mealworms in a partially-covered box. She then switched on the light source and observed the mealworms for 2 minutes.

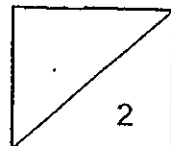


- (a) Indicate the position (A, B or C) where the mealworms will be after two minutes. [1]

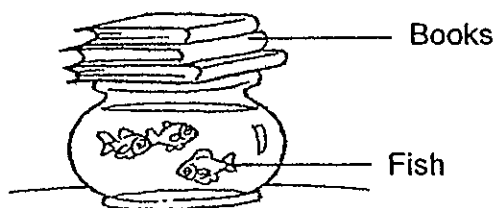
Position \_\_\_\_\_

- (b) Based on her observation, list two characteristics of living things. [1]

- (i) \_\_\_\_\_
- (ii) \_\_\_\_\_



34. There are some fish swimming freely in a fish bowl. Peter places some books that cover the fish bowl completely.



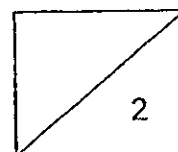
- (a) What do you think will happen to the fish after 5 hours? [1]

---

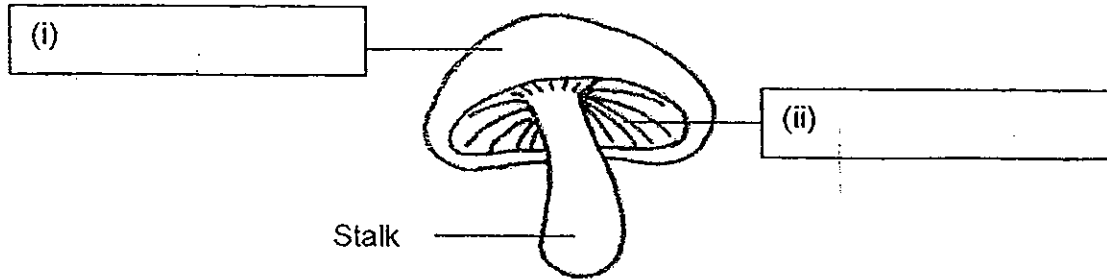
- (b) Give a reason for your answer in (a). [1]

---

---



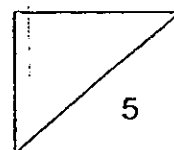
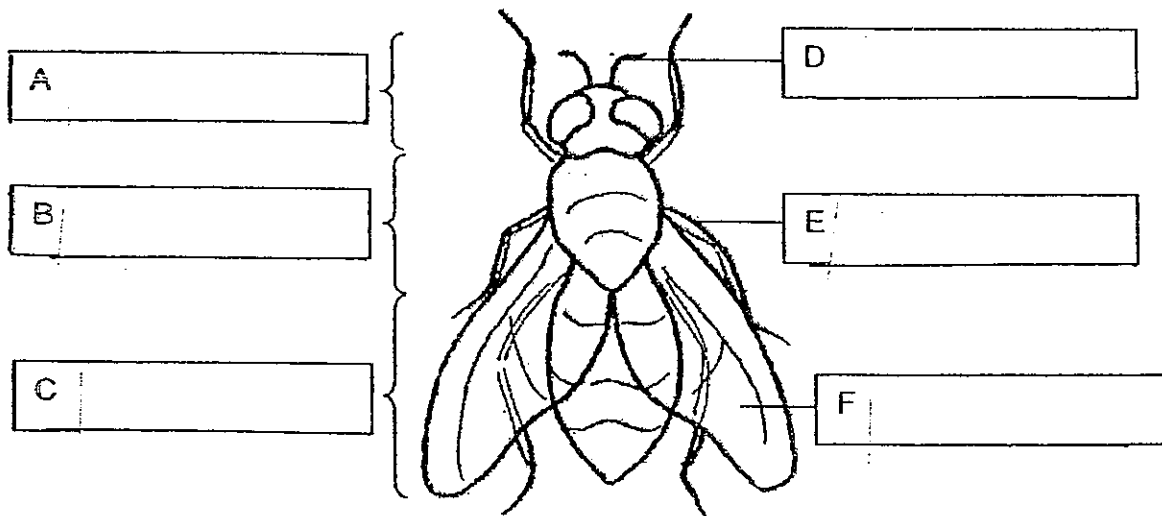
35. (a) Label the different parts of the mushroom. [1]



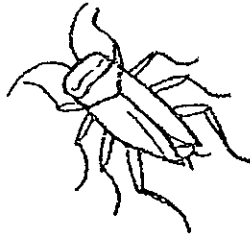
(b) How does a mushroom reproduce? [1]

---

36. Label the different parts of the animal below. [3]



37. The diagram below shows an animal.



Animal X

Christopher wants to find out whether animal X is an insect. He plans to do the following:

Steps	What he does
A	Measure its length
B	Check to see if it has wings
C	Check to see if it has feelers
D	Check to see if it has six legs
E	Check to see if it has three body parts

(a) List down the necessary steps (A, B, C, D or E) from above that are useful in deciding if animal X is an insect? [1]

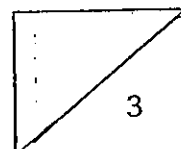
---

(b) After examining animal X, Christopher concluded that animal X is not an insect. Do you agree with him? [1]

---

(c) Give a reason for your answer in (b). [1]

---



38. Study the classification table below.

Group A	Group B	Group C	Group D
Pelican	Whale	Guppy	Ant
Sparrow	Seagull	Goldfish	Bee
Kingfisher	Kangaroo	Angelfish	Butterfly

(a) Which animal has been classified wrongly? [1]

---

(b) Where should the animal mentioned in (a) be placed? [1]

---

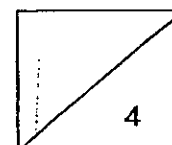
(c) Think of a suitable heading for each of the four groups above and write them in the blanks provided. [2]

(i) Group A \_\_\_\_\_

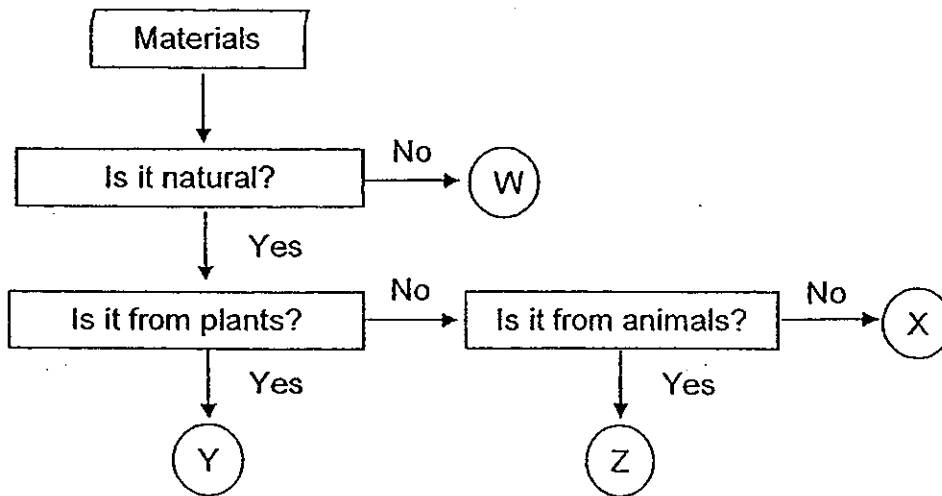
(ii) Group B \_\_\_\_\_

(iii) Group C \_\_\_\_\_

(iv) Group D \_\_\_\_\_



Study the flow chart below.



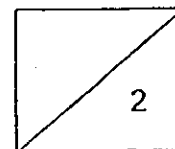
(a) State one similarity between Y and Z. [1]

---

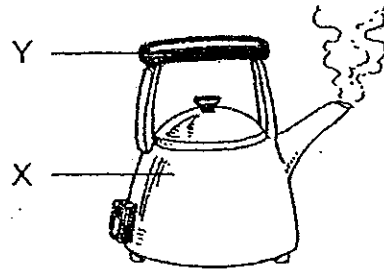
---

(b) Which letter (W, X, Y or Z) best represents iron? [1]

---



40. Look at the picture below.



(a) Name a material that is suitable for making Part X. [1]

---

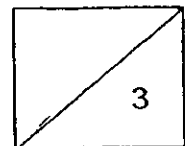
(b) Name a material that is suitable for making Part Y. [1]

---

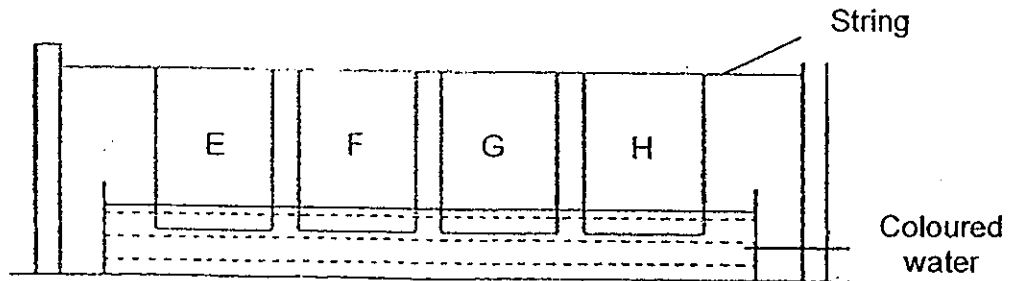
(c) Give a reason for your answer (b). [1]

---

---



41. Alex wanted to find out which material makes a good hand towel that dries wet hands well. Four different materials of the same size and shape were used and the experiment was set up as shown below.



He measured the height in which the water rose to on the hand towel after 3 minutes. The results are recorded in the table below.

Material	E	F	G	H
Height of where the water rose to / cm	15	5	0	3

- (a) Which material do you think will Alex choose to make a hand towel? [1]

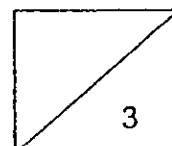
\_\_\_\_\_

- (b) Give a reason for your answer in (a). [1]

\_\_\_\_\_  
\_\_\_\_\_

- (c) Which material will Alex choose to make a raincoat then? [1]

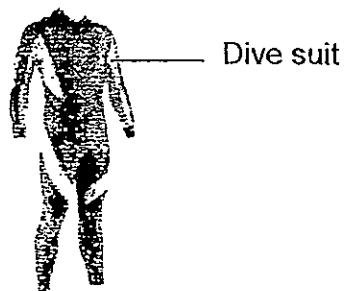
\_\_\_\_\_





42. Shawn conducted several tests on materials A, B and C. He then recorded the results in the table below.

Material	A	B	C
Properties			
Is it flexible?	x	√	√
Does it stretch?	x	√	√
Is it waterproof?	√	√	x
Does it break when dropped?	√	x	x



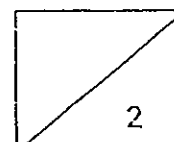
- (a) Which material should Shawn use to make a dive suit? [1]

---

- (b) Give a reason for your answer in (a). [1]

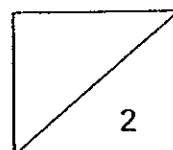
---

---



- (c) Shawn then carried out the same test for a coin. Complete the table below to show the correct results of the test. Write 'Yes' or 'No' in the boxes. [2]

Properties	A Coin
Is it flexible?	(i)
Does it stretch?	(ii)
Is it waterproof?	(iii)
Does it break when dropped?	(iv)



43. Marie accidentally spilled some milk on the floor. She found a towel and a piece of cardboard nearby.

(a) Which one of the two materials should Marie use to dry the floor? [1]

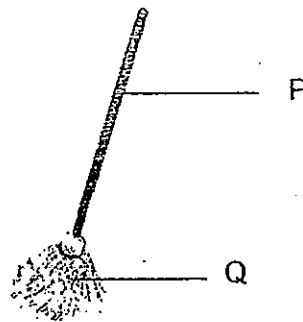
---

(b) Give a reason for your answer in (a). [1]

---

---

Below is another tool that Marie can use to clean up the floor.

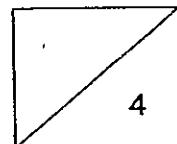


(c) Name a material that is suitable for making Part P. [1]

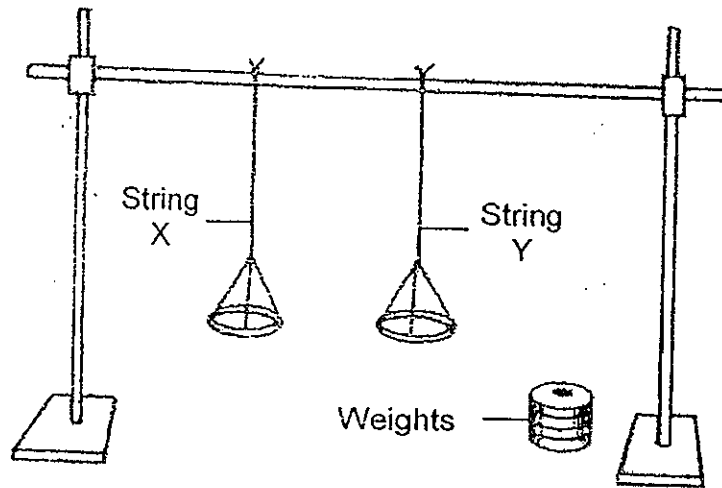
---

(d) Name a material that is suitable for making Part Q. [1]

---



44. Bob set up an experiment as shown below. He tested the strength of two strings, X and Y by adding equal weights to both of them. One string is made of cotton and the other string is made of nylon. String Y broke first.



- (a) Based on the observations, identify which material (cotton or nylon) each string is made of. [2]

- (i) String X \_\_\_\_\_
- (ii) String Y \_\_\_\_\_

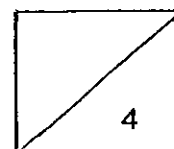
- (b) Which string (X or Y), is more suitable for making a fishing line? [1]

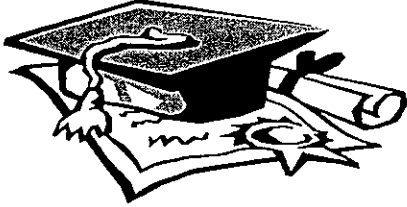
\_\_\_\_\_

- (c) Give a reason for your answer in (b). [1]

\_\_\_\_\_  
\_\_\_\_\_

- End of Paper -



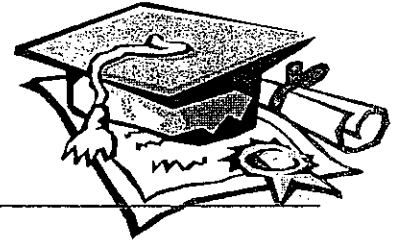


# ANSWER SHEET

**EXAM PAPER 2010**

**SCHOOL : CATHOLIC HIGH PRIMARY  
SUBJECT : PRIMARY 3 SCIENCE**

**TERM : SA1**



Q1	Q2	Q3	Q4	Q5	Q6	Q7	Q8	Q9	Q10	Q11	Q12	Q13	Q14	Q15	Q16	Q17
2	3	2	4	1	2	2	4	3	2	3	4	3	4	1	2	4

Q18	Q19	Q20	Q21	Q22	Q23	Q24	Q25	Q26	Q27	Q28	Q29	Q30
3	1	1	4	2	1	3	1	4	3	3	4	2

31)a)hibiscus plant      b) candle      c)uncooked seeds      d)cooked seed

32)a)The seeds are living things.      b)The seeds grow into new plants.

33)a)C.

b)i)Living things can more.

ii)Living things can respond to changes in their surrounding.

34)a)The fish will die.

b)The fish need air to survive.

35)a)i)Cap      ii)Gills      b)It reproduces by spores.

36)A: head      B: thorax      C: abdomen      D: feelers      E: leg      F: wing

37)a)The steps C, D and E.

b)No.

c)It has 8 legs and 2 body parts.

38)a)Seagull.      b)Group A.      c)i)Birds      ii)Mammals      iii)Fish      iv)Insects

39)a)Both are natural materials.      b)X.

40)a)Metal      b)Plastic

c)Plastic is a poor conductor of heat so we will not burn our hands when we hold it.

41)a)Material E.

b)It absorbs the most water. Material E parts the most water.

c)Material G.

42)a)Material B.  
b)It is flexible, waterproof and can be stretched.  
c)i)No ii)No iii)Yes iv)No

43)a)A towel.  
b)It absorbs more milk than the cardboard.  
c)Wood.  
d)Cloth.

44)a)i)Nylon. ii)cotton.  
b)String X.  
c)String X is stronger than string Y.