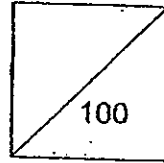




**HENRY PARK PRIMARY SCHOOL  
2010 SEMESTRAL EXAMINATION 1  
SCIENCE  
PRIMARY 3**

Duration of Paper: 1 h 45 min



Name: \_\_\_\_\_

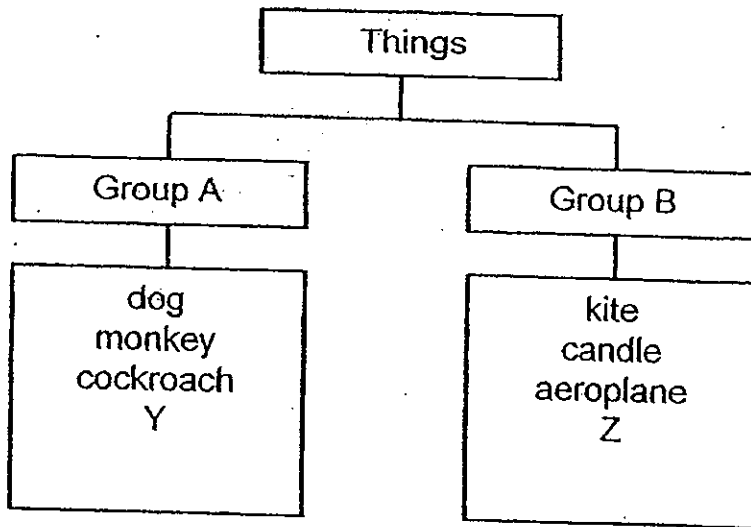
Parent's Signature \_\_\_\_\_

Class: Pr 3 \_\_\_\_\_

**Booklet A (60 marks)**

For each question from 1 to 30, four options are given. One of them is the correct answer. Make your choice (1, 2, 3 or 4). Shade the correct oval (1, 2, 3 or 4) on the **Optical Answer Sheet**.

1. Study the classification below.



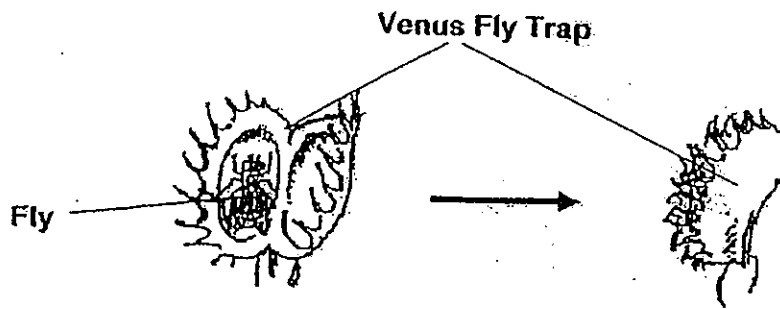
Which of the following correctly represents Y and Z?

(1)	water	helicopter
(2)	emu	plastic ball
(3)	balsam plant	bacteria
(4)	pot	mushroom

( )



2. The diagram below shows a fly being caught by a Venus Fly Trap. The Venus Fly Trap closes its two leaves like a shell when the fly walks on it.



Which one of the following characteristics of living things explains the actions of the Venus Fly Trap?

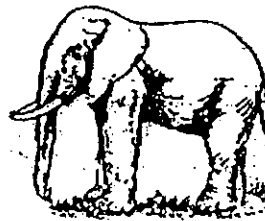
- (1) Living things die.
- (2) Living things reproduce.
- (3) Living things need water.
- (4) Living things respond to changes around them.

( )

3. Study the living things shown below.



A

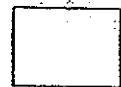


B

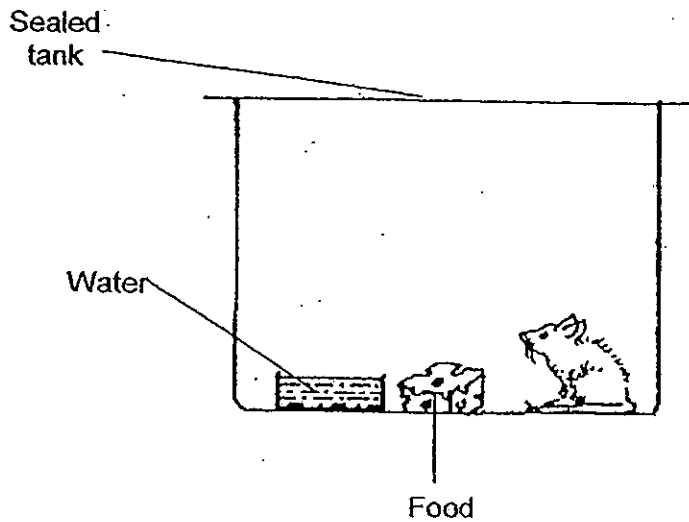
How is A different from B?

	A	B
(1)	Does not need air	Needs air
(2)	Cannot reproduce	Can reproduce
(3)	Does not need water and food to grow	Needs water and food to grow
(4)	Can make their own food	Cannot make their own food

( )



(4.) Henry placed a mouse in a tank together with some water and food. He then sealed the tank to prevent the mouse from escaping.



The next day, he found that there was no more water and food and the mouse had died. Why did the mouse die?

- (1) It did not have enough air.
- (2) It did not have enough light.
- (3) It did not have enough water and food.
- (4) It did not have enough space to move.

( )

5. James is a newborn baby. The table below shows his height for a period of 5 months.

Month	Height (cm)
1 <sup>st</sup>	48
2 <sup>nd</sup>	50
3 <sup>rd</sup>	53
4 <sup>th</sup>	55
5 <sup>th</sup>	59

Based on the information given above, which one of the following statements is true?

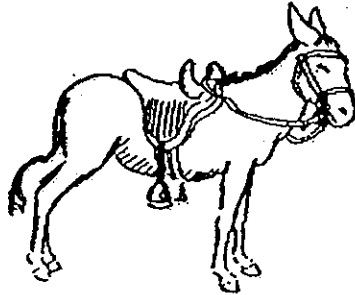
- (1) James' height remains the same.
- (2) James' height decreases as he grows.
- (3) James' height increases the most between the 2<sup>nd</sup> and 3<sup>rd</sup> months.
- (4) James' height increases the most between the 4<sup>th</sup> and 5<sup>th</sup> months.

( )



6. Study the table below.

Animal	Characteristics		
A	Swim	Has scales	Has no legs
B	Hop	Has hair	Has two legs
C	Walk	Has hair	Has four legs
D	Fly	Has feather	Has two legs

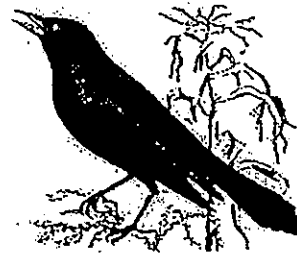
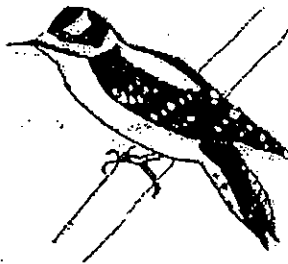


Which characteristics of the following animals correctly matches the animal above?

- (1) A
- (2) B
- (3) C
- (4) D

( )

7. Study the animals shown below.

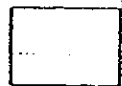


Which of the following statements are true of the above animals?

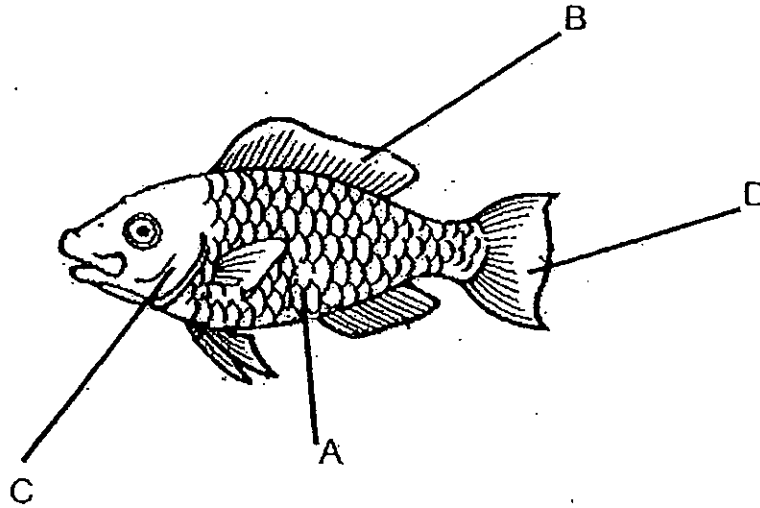
- A: They have wings.
- B: They have feelers.
- C: They have claws.

- (1) A and B only
- (2) A and C only
- (3) B and C only
- (4) A, B and C

( )



8. Mark, Andrew and Jack studied the diagram of a fish as shown below.



They then made the following statements.

Mark : Part A protects the body of the fish.

Andrew : Part C helps the fish to swim away from danger.

Jack : Parts B and D help the fish to swim and keep its balance.

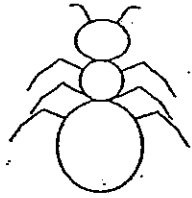
Whose statement(s) is / are correct?

- (1) Jack only
- (2) Andrew only
- (3) Jack and Andrew only
- (4) Mark and Jack only

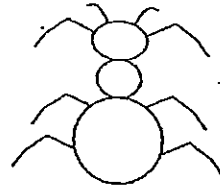


9. Which one of the following best shows the correct position of the legs on an insect?

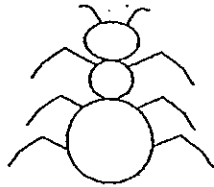
(1)



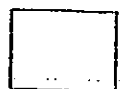
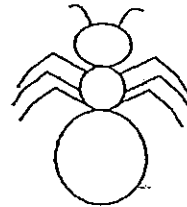
(3)



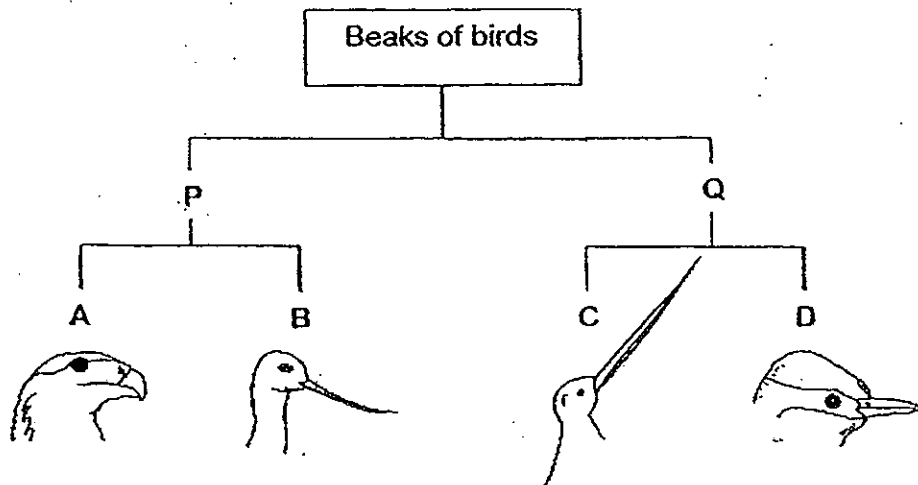
(2)



(4)



10. The classification below shows how some birds are classified according to certain characteristics.



Which of the following shows the characteristics B and Q correctly?

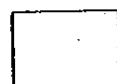
	B	Q
(1)	Curved beak	Beak shorter than head
(2)	Straight beak	Beak longer than head
(3)	Beak shorter than head	Curved beak
(4)	Beak longer than head	Straight beak

11. Bob saw an animal shown below.

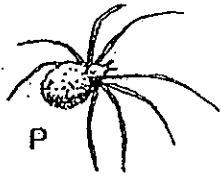
	<p>A: Check if it feeds its young with milk.</p> <p>B: Check if it is covered with hair or fur.</p> <p>C: Check if it is warm blooded</p>
--	---

He wanted to know if the animal is a mammal. Which of the above actions, A, B and C, would help him find this out?

- (1) A and B only
- (2) A and C only
- (3) B and C only
- (4) A, B and C.



12. Which one of the following living things does not belong to the same group?



- (1) P
- (2) Q
- (3) R
- (4) S

( )

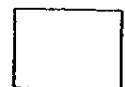
13. Which of the following statements about the plant below is true?



- A: It is a flowering plant
- B: It responds to changes.
- C: It makes its own food.
- D: It cannot move on its own.

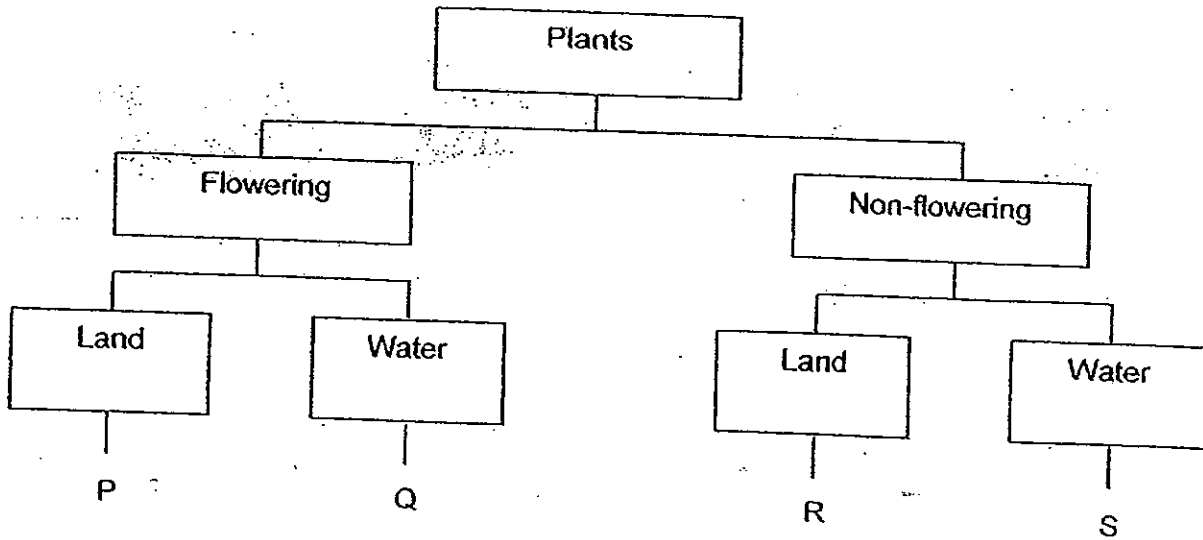
- (1) A only
- (2) B and C only
- (3) A, B and C only
- (4) B, C and D only

( )





14. The following table shows some information on Plants P, Q, R and S.



Meili found a plant in the garden and made these observations:

- Has spores
- Grows on land

Based on the information given in the table, which plant has she found?

- (1) P
- (2) Q
- (3) R
- (4) S

( )

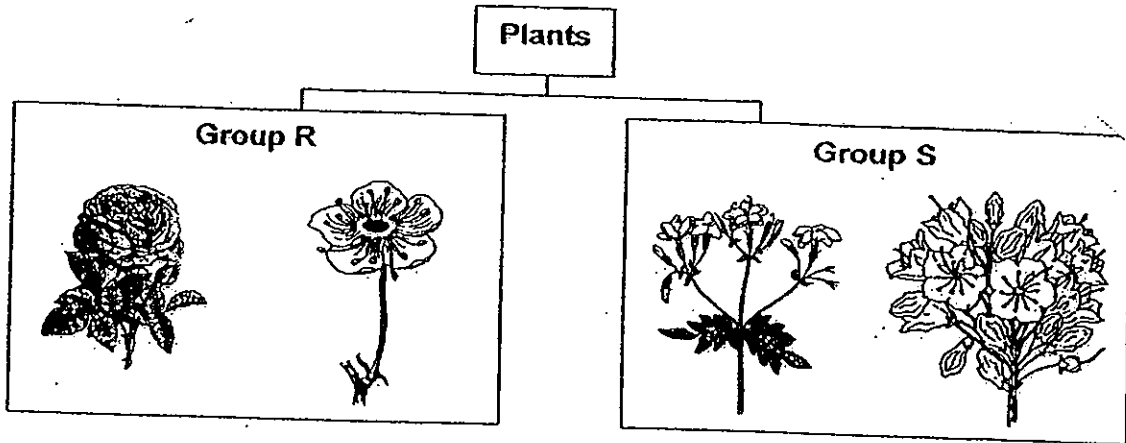
15. Which one of the following statements about plants is true?

- (1) All plants grow on land.
- (2) All plants move about freely
- (3) All plants need water to survive.
- (4) All plants have flowers.

( )



16. Study the classification table below carefully.

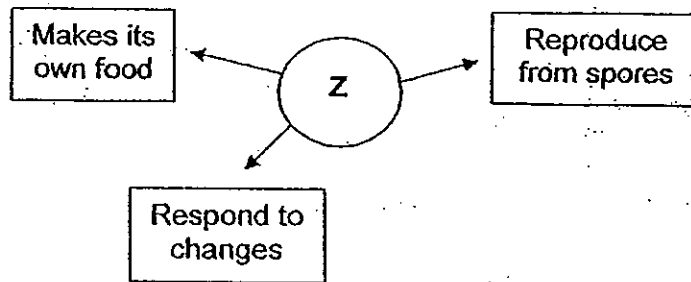


What could Group R and Group S represent?

	Group R	Group S
(1)	Water Plants	Land Plants
(2)	Flowering Plants	Non - Flowering Plants
(3)	Weak stems	Strong stems
(4)	Flowers grow singly	Flowers grow in bunches



17. The following describes the characteristics of living thing Z.



Which one of the following living things is Z likely to be?

- (1) Yeast
- (2) Rose Plant
- (3) Bird's Nest fern
- (4) Bracket Fungus

( )

18. Which of the following plants reproduce from spores?



A



B



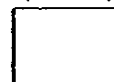
C



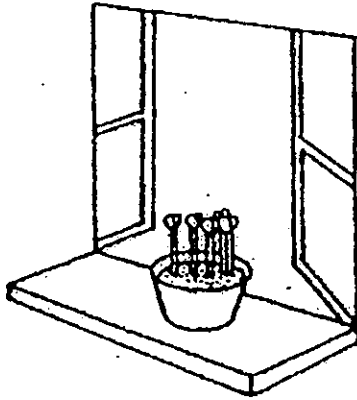
D

- (1) A only
- (2) B and C only
- (3) A and C only
- (4) B and D only

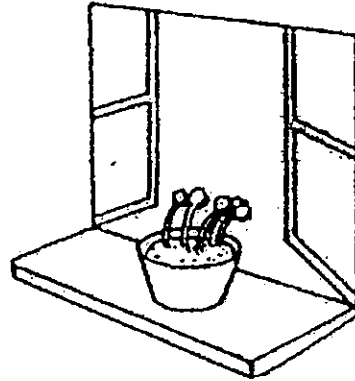
( )



19. John kept a potted plant near a window. He watered the plant every day and after 2 weeks, he noticed that the plant looked different.



In the beginning



After 2 weeks

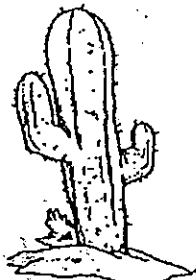
Why did the plant look different after 2 weeks?

- (1) The plant was dying.
- (2) The plant was responding to sunlight.
- (3) The plant needed more air.
- (4) The plant needed more water.

20. Study the pictures below.



Plant A



Plant B



Plant C



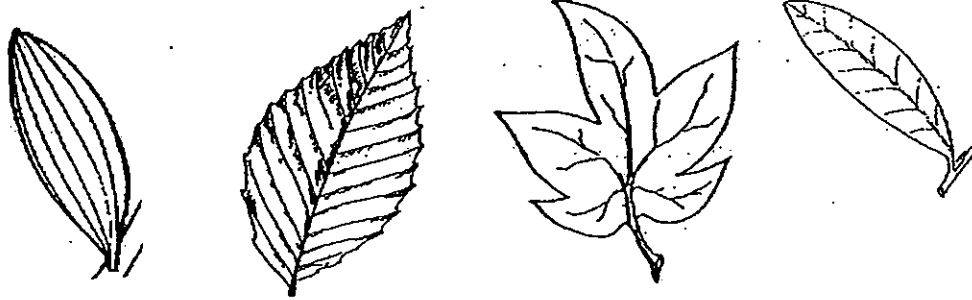
Plant D

Which plant has weak stems?

- (1) A
- (2) B
- (3) C
- (4) D



21. Look at the leaves shown below.



Which one of the following statements best describes what you observe about the leaves?

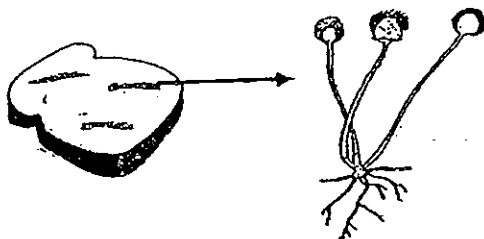
- A: They all have sharp edges.
- B: They have different shapes.
- C: They have the same vein patterns.

- (1) A only
- (2) B only
- (3) A and B only
- (4) B and C only

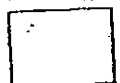
22. Which statement about fungi is correct?

- (1) All fungi can be eaten.
- (2) All fungi can cause infection.
- (3) All fungi can be used as medicine.
- (4) All fungi help to break down dead plants and animals.

23. Which one of the following statements about the living thing below is true?



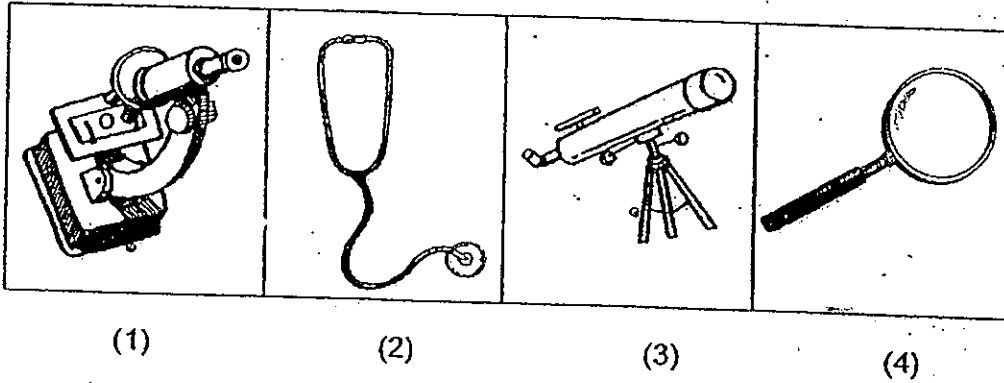
- (1) It spoils our food.
- (2) It is a flowering plant;
- (3) It makes its own food.
- (4) It can be found on plants.



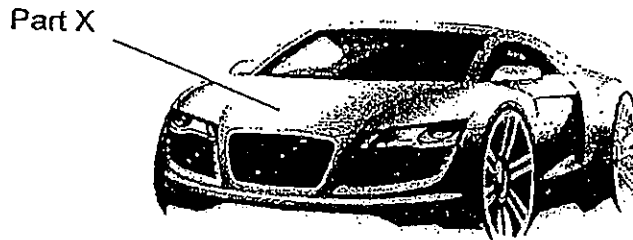
24. These are bacteria which are too tiny to be seen with the naked eye.



What is the instrument used to help us see them?



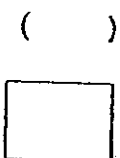
25. The diagram below shows a car.



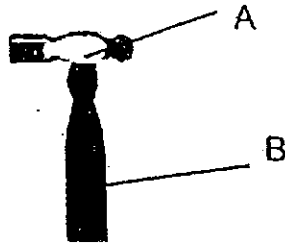
Which material A, B, C or D is most suitable to make Part X of the car?

Material	Waterproof	Strong	Hard	Transparent
A	√	√	√	√
B	√	√	√	
C		√		√
D	√			

- (1) A
- (2) B
- (3) C
- (4) D

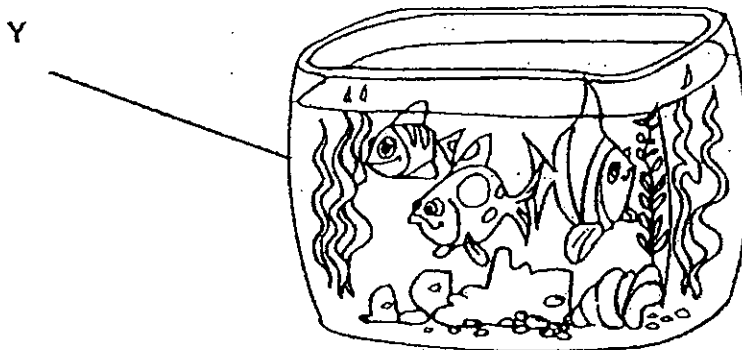


26. The hammer below is made of Materials A and B. What properties do the two materials have?



	Properties of A	Properties of B
(1)	Hard	Flexible
(2)	Hard	Strong
(3)	Hard	Shiny
(4)	Flexible	Soft

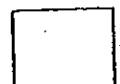
27. Which of the following materials are suitable for making part Y of a fish tank?



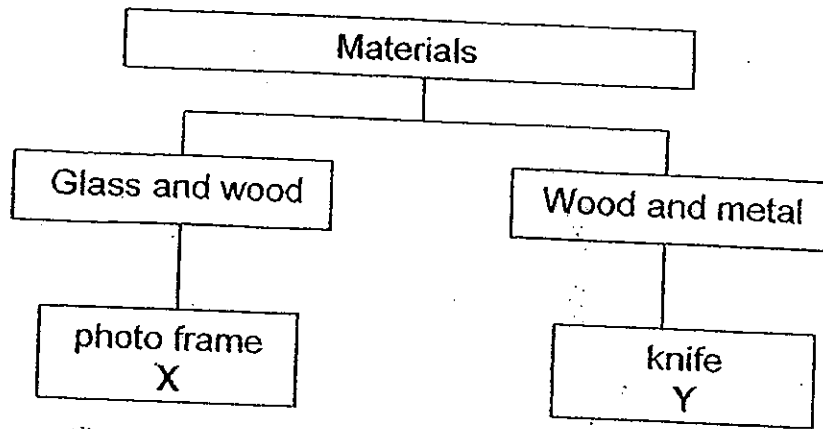
- A: Metal
- B: Glass
- C: Plastic
- D: Wood

- (1) A and D only
- (2) B and C only
- (3) A, B and C only
- (4) B, C and D only

( )

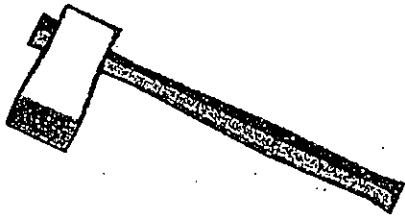


28. The classification table below shows objects that are grouped according to the materials they are made of.

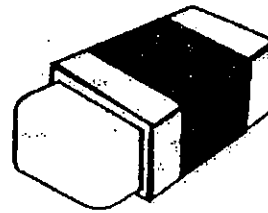


Which one of the following objects can be placed at Y?

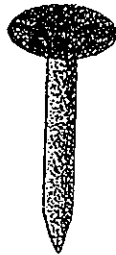
(1)



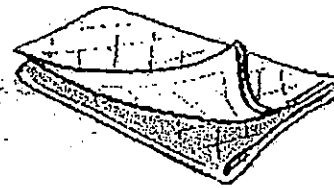
(2)



(3)



(4)





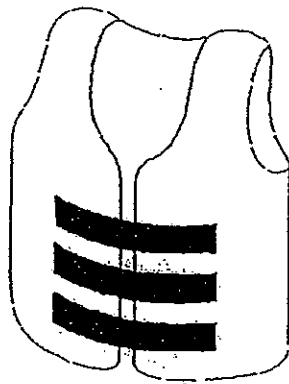
29. Winnie's father advised her to make a new pair of spectacles with plastic lenses.

In what way are plastic lenses better than glass lenses for making Winnie's spectacles?

- (1) Plastic does not break easily.
- (2) Plastic does not scratch easily.
- (3) Plastic is transparent.
- (4) Plastic is waterproof.

( )

30. A life jacket is used to save people from drowning in the seas. Plastic is a more suitable material than cloth to make a life jacket because it is \_\_\_\_\_.



Life jacket

- A: light
- B: flexible
- C: waterproof

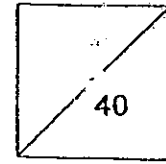
- (1) B only
- (2) C only
- (3) A and B only
- (4) B and C only

( )

End of Booklet A



HENRY PARK PRIMARY SCHOOL  
2010 SEMESTRAL EXAMINATION 1  
SCIENCE  
PRIMARY 3



Name: \_\_\_\_\_ (

Class: Pr 3 \_\_\_\_\_

**Booklet B (40 marks)**

Write your answers to questions 31 to 44 in the spaces given.

31. Jimmy put some tiger fish into a fish tank. He fed the fish everyday. He kept a record of the number of tiger fish over a period of 10 days as shown in the table below.

Time	Tiger fish
Day 1	6
Day 2	8
Day 6	9
Day 10	12

- a) How have (the number of tiger fish) changed during the 10 days?

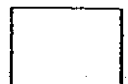
---

---

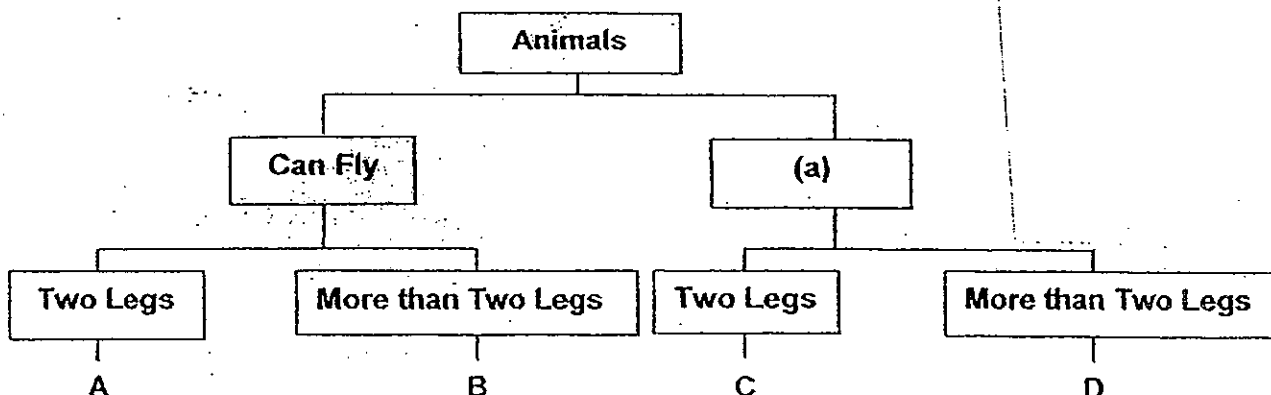
- b) Based on the table above, why does the number of tiger fish change in this way? (1m)

---

---



32. Study the classification table below.



(1m)

a) Give a suitable heading for (a).

(a) \_\_\_\_\_

b) Jane saw Animal K in her garden and recorded her observations in her Science Journal.

(1m)

Animal K can fly.  
Animal K has six legs.

Which group, A, B, C or D does Animal K belong to?

\_\_\_\_\_

c) Study the animal below.

(2m)



Animal W

Based on the classification table, how is Animal W different from Animal A?

\_\_\_\_\_

\_\_\_\_\_



3) David went to the zoo and took a photograph of Animal A and Animal B as shown below.



A



B

a) Both animals A and B are classified under the same group of animals. (1m)

Which group should they be classified under?

---

b) State 1 characteristic that only this group of animals has. (1m)

---

---

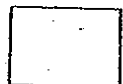
---

c) State one difference between Animal A and Animal B. (1m)

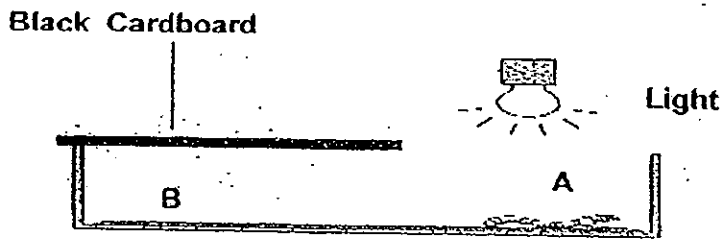
---

---

---

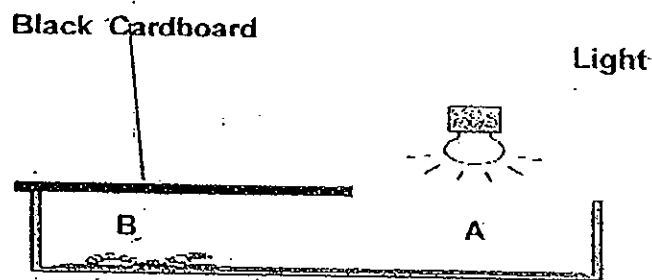


34. Simon conducted an experiment on an earthworm. He set up a tray as shown below.



He placed the earthworm on side A and shone a light over the earthworm.

After five minutes, the earthworm moved towards side B which was covered with a black cardboard as shown below.



- a) State two characteristics of living things the above experiment show. (2)

---

---

- b) From the experiment, what can Simon learn about the kind of places the earthworm likes to live in? (1m)

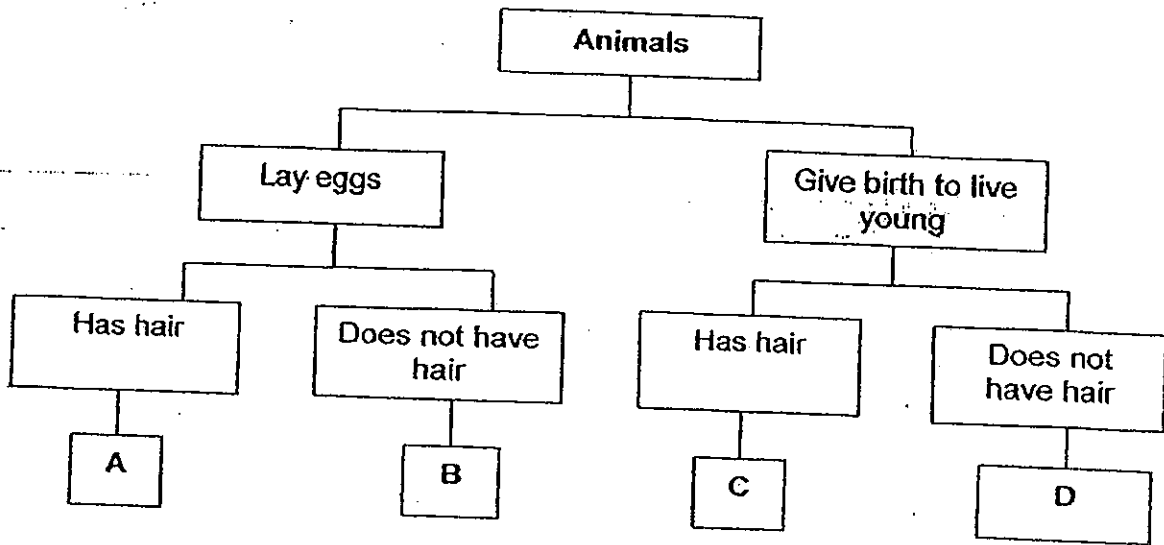
---

---

---



35. The classification table below shows how Animal A, B, C and D are classified according to certain characteristics.



a) From the classification table, describe the characteristics of Animal B. (2m)

---

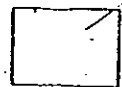
---

b) In which group A, B, C or D would you classify an elephant? (1m)

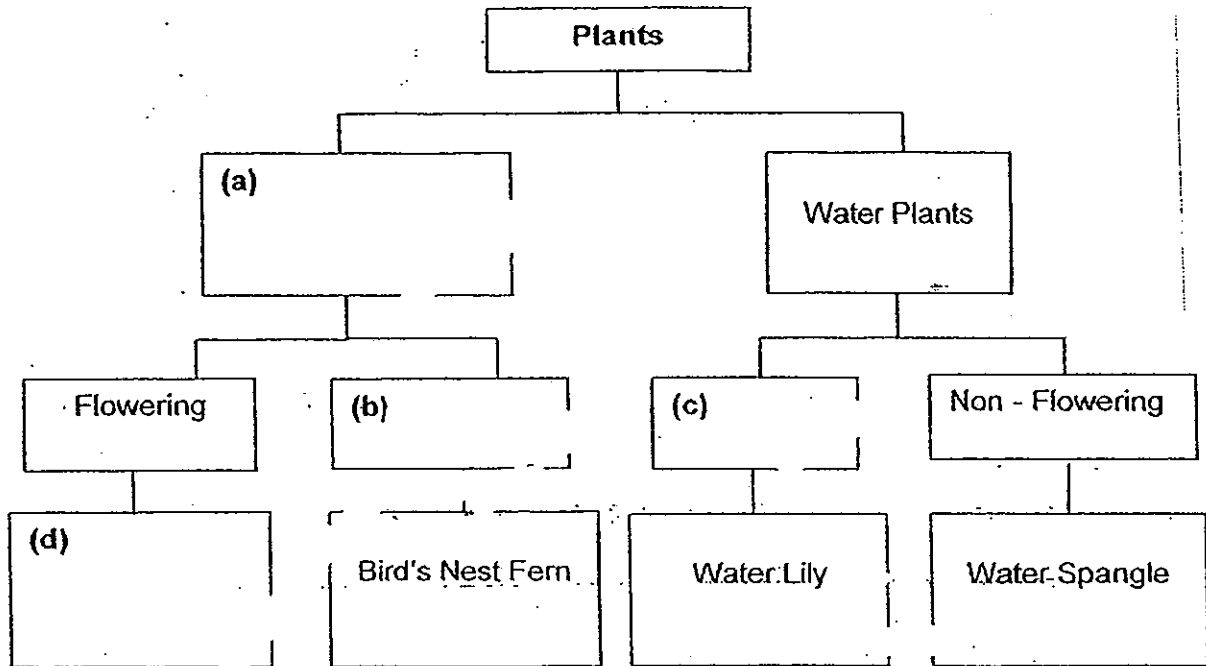
---

---

---

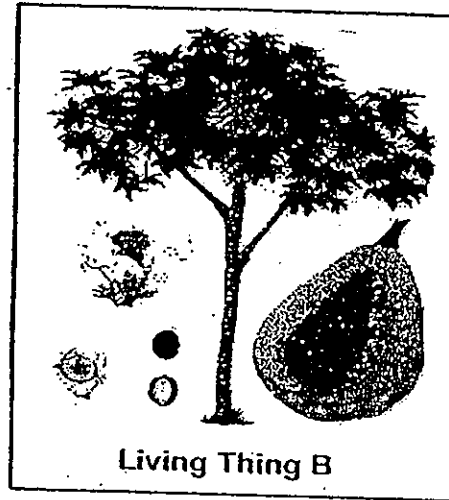


36. Fill the empty boxes in the classification chart with the helping words below.



37.

Amm was at the Botanical Gardens when she saw two living things shown below.



- a) Which group of living things do both Living Thing A and B belong to? Explain your answer.

---

---

---

- b) Even though they belong to the same group of living things, there are differences between them. State **ONE** difference between Living Thing A and Living Thing B. (2m)

---

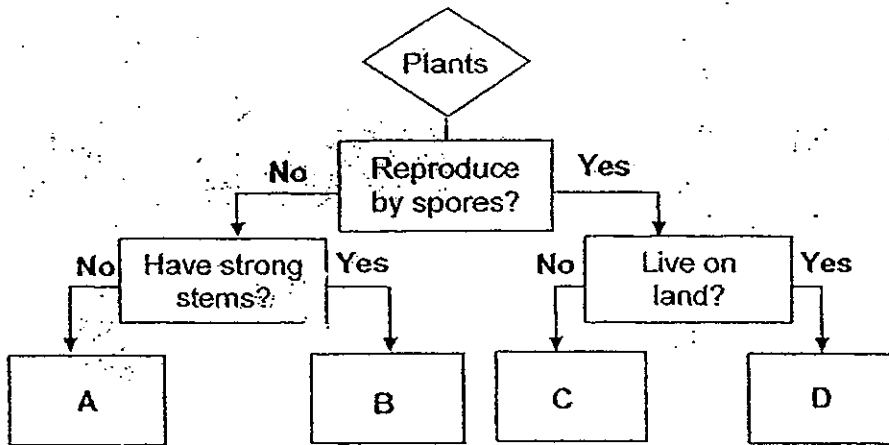
---

---





38. The flowchart below shows the characteristics of Plant A, B, C and D.



a) State the characteristics of Plant A (2m)

---

---



b) Why can't Ali put the above living thing in the above flowchart? (2m)

---

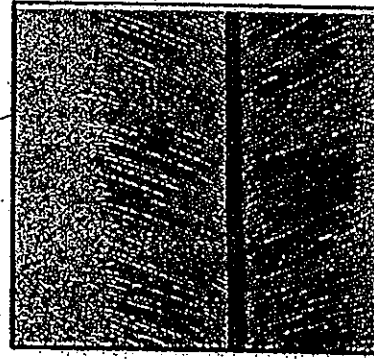
---



39. Study the picture below.



Bird's nest fern



Brown Lines

Underside of a bird's nest fern leaf

a) What are the 'brown lines' found on the underside of the bird's nest fern? (1m)

---

b) Describe how the 'brown lines' you mentioned in (a) help the plant? (2m)

---

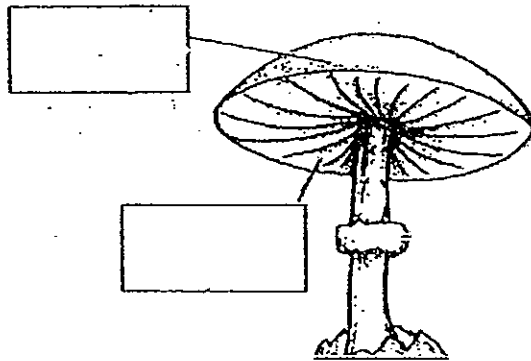
---

---



40. The diagram shows a mushroom.

(a) Name the parts accordingly. <sup>1m</sup> (2m)



(b) In which part of the mushroom are the spores found? (1m)

---

41. Bacteria are micro-organisms. They can be found in soil, lakes, in the air and even in your body.

a) State one way in which they can be useful to people. (1m)

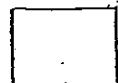
---

---

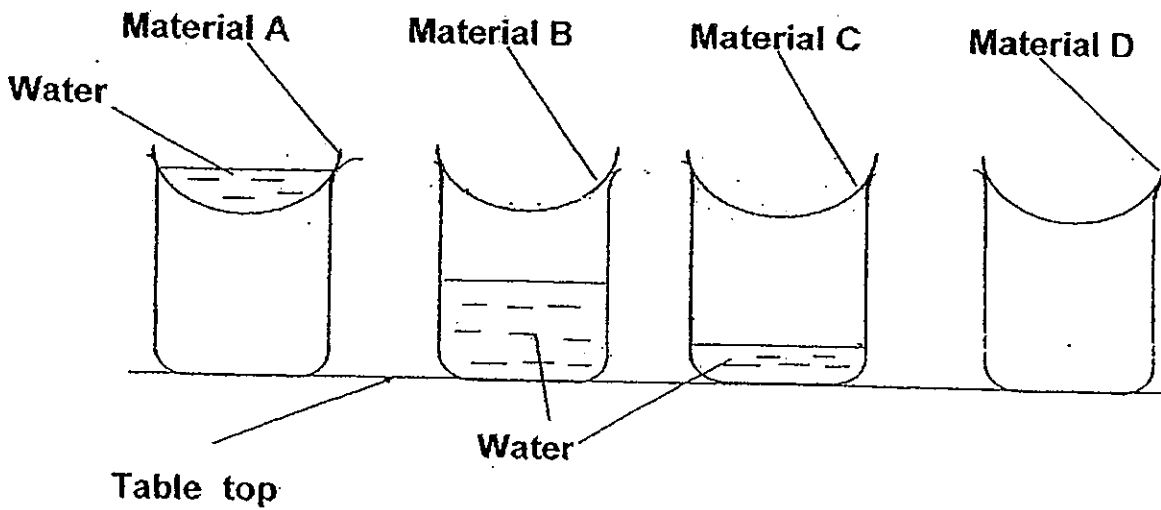
b) State one way in which they can be harmful to people. (1m)

---

---



42. Mary placed four different types of materials, A, B, C and D, over four containers as shown in the diagram below. She then poured an equal amount of water onto each material. Water that flowed through the materials are collected in the containers.



- a) Which material, A, B, C or D is waterproof?

(1m)

---

- b) Which material, A, B, C or D is suitable for making bath towels?

(1m)

---

- c) Give a reason why you chose the material in (b).

(1m)

---

---



43. William conducted some tests on materials A, B and C, and recorded the results in the table below.

Properties	Material A	Material B	Material C
light	No	Yes	No
flexible	Yes	Yes	Yes
waterproof	No	Yes	Yes
breaks easily	No	No	Yes

a) State 2 properties of Material C

(2m)

---

---

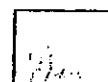
---

b) - Which would be the most suitable material for making a swimming cap? (1m)  
Give a reason for your answer.

---

---

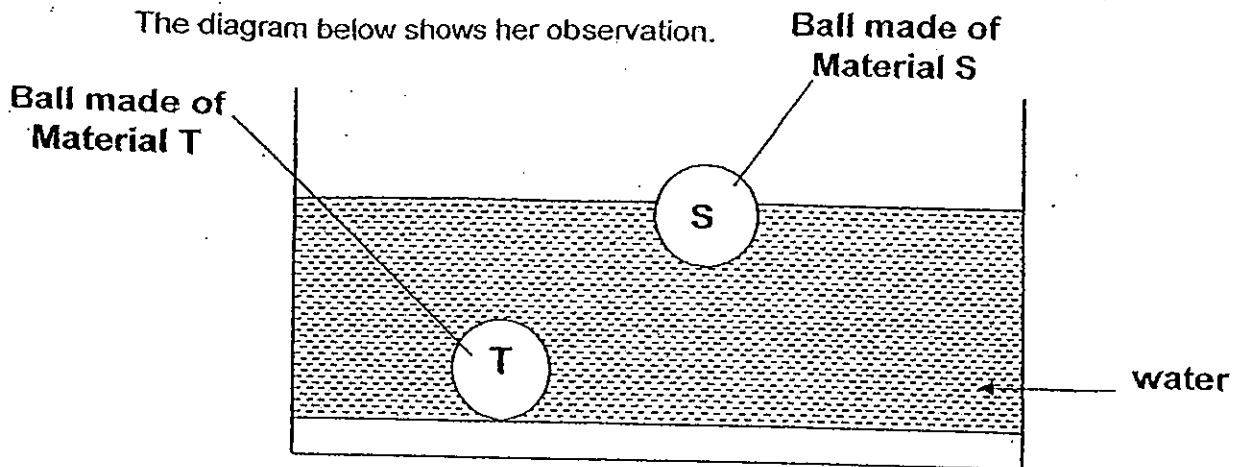
---



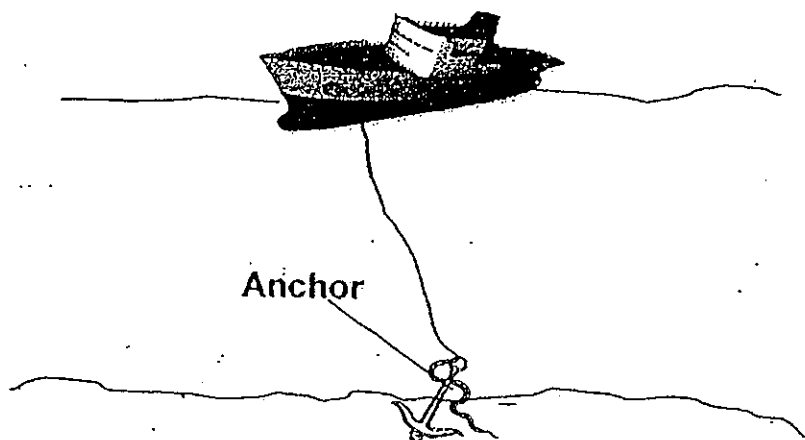
44. Jenny used two balls of the same size and shape to carry out an experiment. One is made of material S and another is made of material T.

She drops the two balls into a container of water.

The diagram below shows her observation.



a) Jenny read from a book that an anchor of a ship is dropped to the bottom of the sea to stop the ship from moving. (1m)



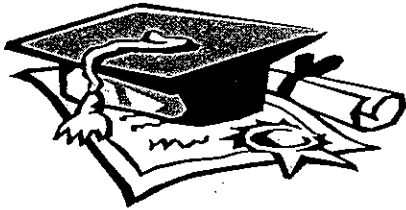
Which material, S or T is suitable to be used to make an anchor?

Material \_\_\_\_\_

b) Give a reason for your answer in (a). (1m)

\_\_\_\_\_



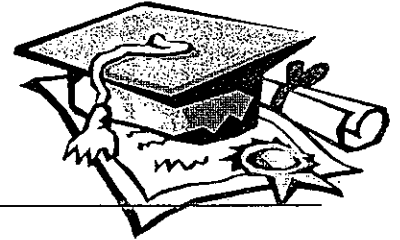


# ANSWER SHEET

**EXAM PAPER 2010**

**SCHOOL : HENRY PARK PRIMARY  
SUBJECT : PRIMARY 3 SCIENCE**

**TERM : SA1**



Q1	Q2	Q3	Q4	Q5	Q6	Q7	Q8	Q9	Q10	Q11	Q12	Q13	Q14	Q15	Q16	Q17
2	4	4	1	4	3	2	4	4	4	1	1	3	3	3	4	3

Q18	Q19	Q20	Q22	Q23	Q24	Q25	Q26	Q27	Q28	Q29	Q30
3	2	1	4	1	1	2	2	2	1	1	2

31a) The number of tiger fish has increased during the ten days.

31b) The tiger fish reproduced.

32a) cannot fly

32b) Group B

32c) Animal W has four legs and cannot fly while animal A has 2 legs and can fly.

33a) Birds

33b) feathers

33c) Animal A cannot fly but animal B can fly.

34a) Living things move on their own and living things respond to changes.

34b) Earthworms like to live in dark places.

35a) Animal B lays eggs and does not have hair.

35b) Group C

36a) Land plants

36b) Non-flowering

**36c) Flowering**

**36d) Orchid**

**37a) They make their own food.**

**37b) Living Thing A is a non-flowering plant while Living Thing B is a flowering plant.**

**38a) It does not reproduce by spores and does not have strong stems.**

**38b) It is not a plant.**

**39a) Spores**

**39b) It helps the plant reproduce so that it would not become extinct.**

**40a) Cap; gills (in sequence)**

**40b) Gills**

**41a) They help us make food like cheese.**

**41b) It makes us sick.**

**42a) A**

**42b) D**

**42c) It absorbed all the water and does not allow the water to pass through, allowing the body to dry faster.**

**43a) Flexible and waterproof.**

**43b) Material B. It is waterproof, helping to keep the hair dry during swimming.**

**44a) Material T**

**44b) It sinks into the water.**