



MAHA BODHI SCHOOL
2015 SEMESTRAL ASSESSMENT 1
PRIMARY THREE SCIENCE

Name : _____ ()

Date : 14 May 2015

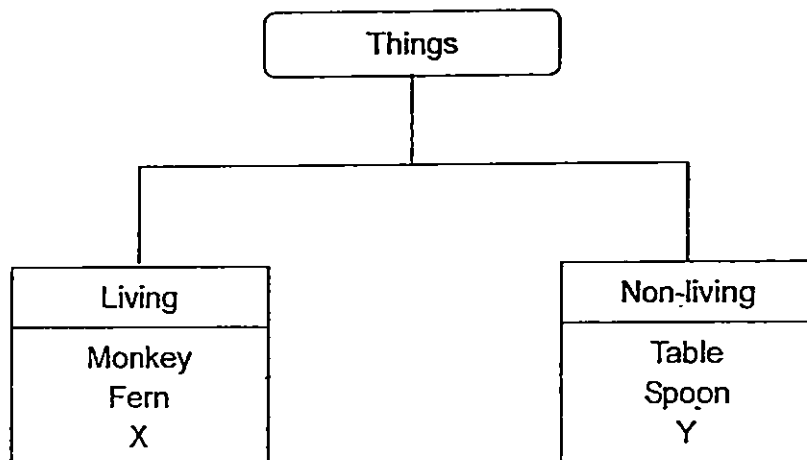
Class : Primary 3 ()

Duration : 1 h 15 min (Booklets A and B)

BOOKLET A [15 x 2 marks = 30 marks]

For each question from 1 to 15, four options are given. One of them is the correct answer. Make your choice (1, 2, 3 or 4). **Shade your answer on the Optical Answer Sheet.**

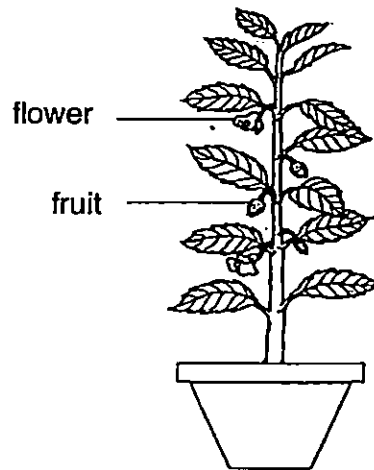
1. Study the classification table below



Which of the following best represents X and Y?

	X	Y
(1)	Robot	Car
(2)	Caterpillar	Butterfly
(3)	Elephant	Aeroplane
(4)	Pencil	Fork

2. Sam saw a pot of plant as shown in the diagram below.



Based on the diagram, Sam can say that it _____.

- (1) is a fern
- (2) has roots
- (3) has edible fruits
- (4) is a flowering plant

3. Which of the following statement(s) is/are true about all plants ?

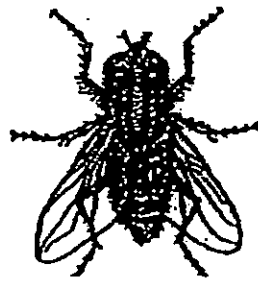
- A. All plants can make their own food.
- B. All plants can reproduce.
- C. All plants have flowers.

- (1) A only
- (2) A and B only
- (3) B and C only
- (4) A, B and C

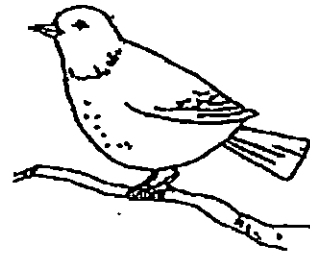
4. John saw an animal in the zoo and he said that it is a mammal.
Which of the following observations made him say that?

- (1) The animal laid eggs.
- (2) The animal had wings.
- (3) The animal lived in water.
- (4) The animal had hair on its body.

5. Study the diagrams below.



Animal E



Animal F

Based on the diagrams, what do Animals E and F have in common?

- A. They lay eggs.
- B. They have wings.
- C. They have three pairs of legs.
- D. They have feathers as body covering.

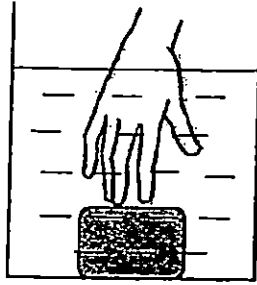
- (1) B only
- (2) A and B only
- (3) A, B and C only
- (4) B, C and D only

6. Which of the following statement(s) is/are true about all fungi?

- A. They can be seen with the naked eye.
- B. They cannot make their own food.
- C. They reproduce through spores.

- (1) A only
- (2) B only
- (3) A and C only
- (4) B and C only

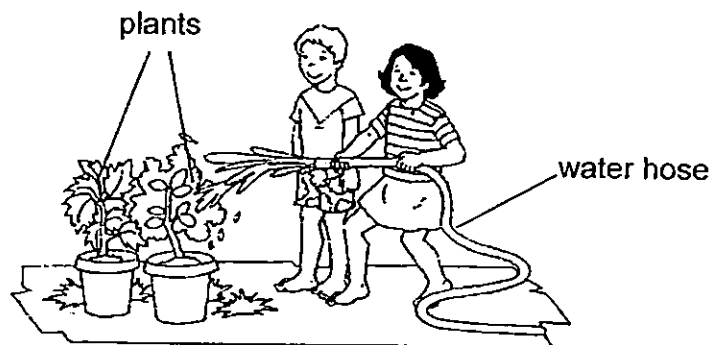
7. Zoey pushed a block to the bottom of a tank filled with water as shown in the diagram below.



When she removed her hand, she observed that the block moved upwards to the surface of the water

Based on her observation, which property of material is she observing?

- (1) Strength
 - (2) Waterproof
 - (3) Transparency
 - (4) Ability to float or sink in water
8. Sarah and Peter used a water hose to water the plants in the garden. The water hose is made of rubber.



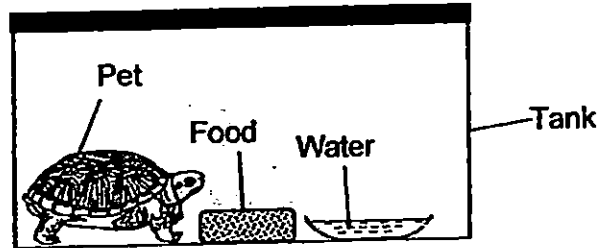
Which of the following reasons best explain (s) why rubber is used for the water hose?

- A. It is flexible.
 - B. It is waterproof.
 - C. It breaks easily.
- (1) A only
 - (2) C only
 - (3) A and B only
 - (4) B and C only

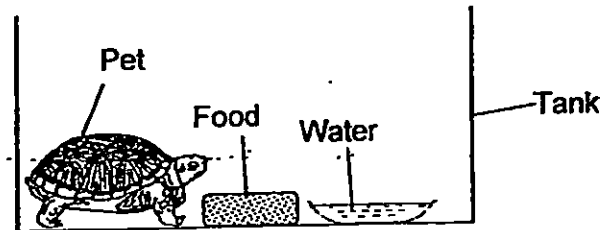
9. Kathy set up four tanks for her pets as shown in the diagrams below. After one week, only one of the pets was still alive.

Which one of the pet will most likely be alive after one week?

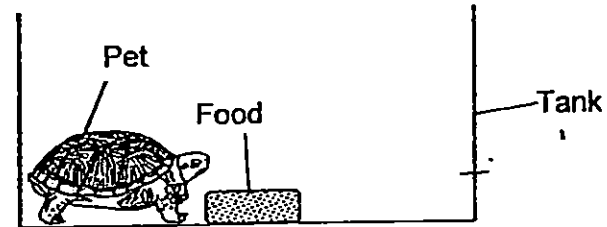
(1)



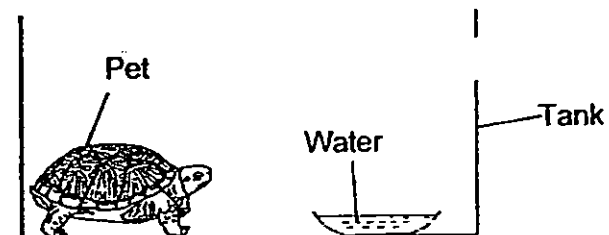
(2)



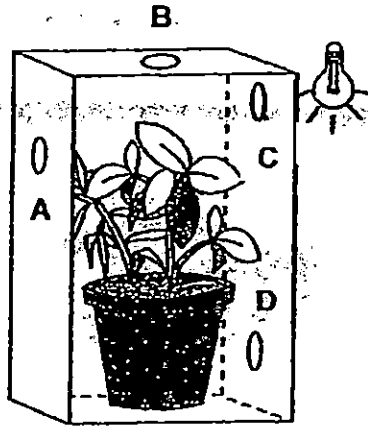
(3)



(4)

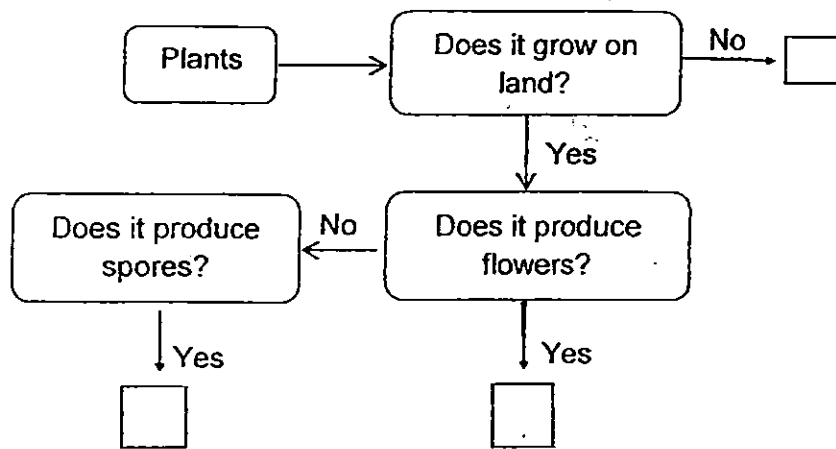


10. Dennis placed a plant in a black cardboard box and made four holes A, B, C and D to allow light to enter as shown in the diagram below.



After one week, which hole would the plant most likely grow towards?

- (1) A
 - (2) B
 - (3) C
 - (4) D
11. Study the flow chart below.



Based on the information above, which one of the following correctly represents letters N, O and P?

	N	O	P
(1)	Flowering plant	Water plant	Non flowering plant
(2)	Non flowering plant	Flowering plant	Water plant
(3)	Water plant	Non flowering plant	Flowering plant
(4)	Flowering plant	Non - Flowering plant	Water plant

12. Heidi recorded the characteristics of 4 animals A, B, C and D which she saw in a field in the table below.

Characteristics	Animal			
	A	B	C	D
Does it have wings?	Yes	Yes	No	Yes
Does it have six legs?	Yes	Yes	Yes	No
Does it have three body parts?	Yes	No	Yes	Yes

The diagram below shows one of the animals that she saw in the field.



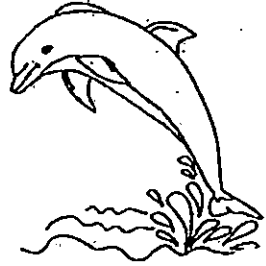
Which of the following was the animal that Heidi saw in the field?

- (1) Animal A
- (2) Animal B
- (3) Animal C
- (4) Animal D

13. The diagrams below show two mammals.



cat

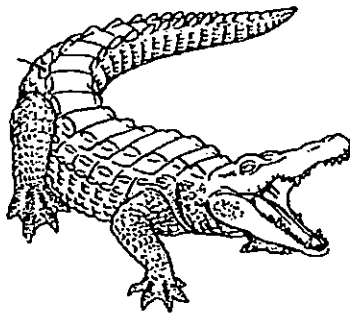


dolphin

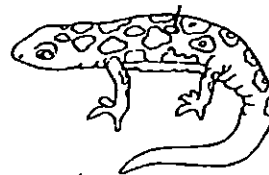
Based on the diagrams and what you know about mammals, which of the following is correct about the cat and the dolphin?

	Similarity	Difference
(1)	They live in the same environment.	Cats give birth to live young but dolphins lay eggs.
(2)	They feed their young with milk.	Cats live on land but dolphins live in water.
(3)	They give birth to live young.	Cats have hair but dolphins do not.
(4)	They have hair.	Cats feed their young with milk but dolphins do not.

14. The diagrams below show two animals A and B.



Animal A



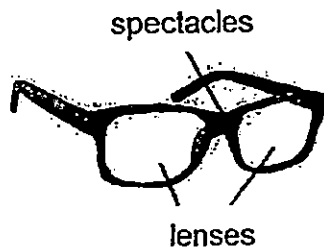
Animal B

Animals A and B belong to different animal groups.

Which of the following statements is true about Animal A and B?

- (1) Both animals A and B live on land only.
- (2) Animal A has scales but Animal B has moist skin.
- (3) Both animals A and B breathe through lungs only.
- (4) Animal A gives birth to young alive but Animal B lays eggs.

15. Ahmad is careless and drops his spectacles easily. He prefers to use spectacles lenses made of plastic instead of glass.



Which one of the following is the reason for Ahmad to use plastic lenses instead of glass?

- (1) Plastic is flexible.
- (2) Plastic is waterproof.
- (3) Plastic does not break easily.
- (4) Plastic allows light to pass through.

END OF BOOKLET A

GO ON TO BOOKLET B



MAHA BODHI SCHOOL
2015 SEMESTRAL ASSESSMENT 1
PRIMARY THREE SCIENCE

Name : _____ ()

Class : Primary 3 ()

Duration : 1 h 15 min (Booklets A and B)

Date : 14 May 2015

Parent's signature: _____

Booklet A	30
Booklet B	20
Total	50

BOOKLET B [20 marks]

For questions 16 to 22, write your answers in this booklet.

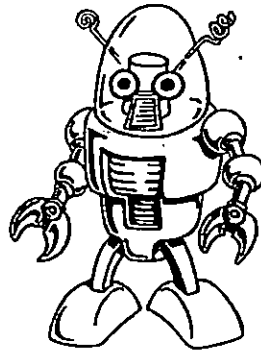
The number of marks available is shown in the brackets [] at the end of each question or part-question.

16. (a) Study the following statements in the table shown below. Circle "True" or "False" against each statement in the boxes provided. [2]

	Statements	Circle the correct answer
(i)	Some non-living things can grow.	True / False
(ii)	Non-living things cannot reproduce.	True / False
(iii)	Living things need air, food and water.	True / False
(iv)	Living things respond to changes around them.	True / False

Marks :

- (b) Fandi went to the Science Centre and saw a robot as shown in the diagram below. The robot is able to move and speaks to visitors when they talk to it.



“This robot is alive and it can move! It is a living thing!” exclaimed Fandi. His teacher shook his head in disagreement and said that the robot is not a living thing.

- (i) Why did Fandi say that the robot is a living thing? [1]

- (ii) Explain why Fandi’s teacher disagreed with him. [1]

Marks :

12

17. The diagram below shows 4 leaves.



Leaf A



Leaf B

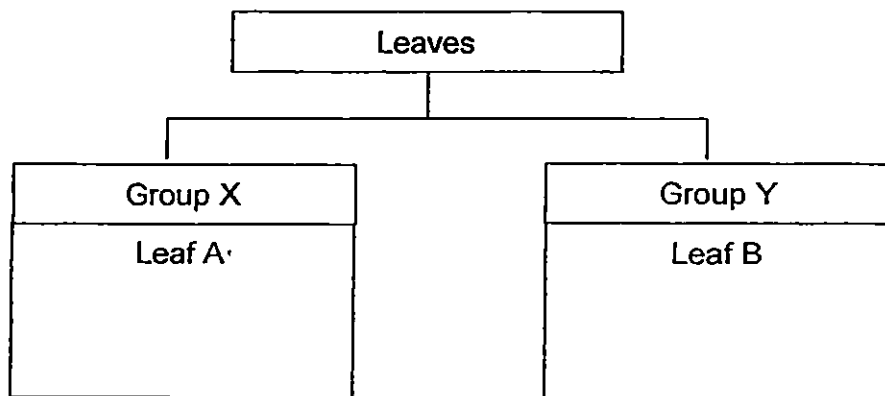


Leaf C



Leaf D

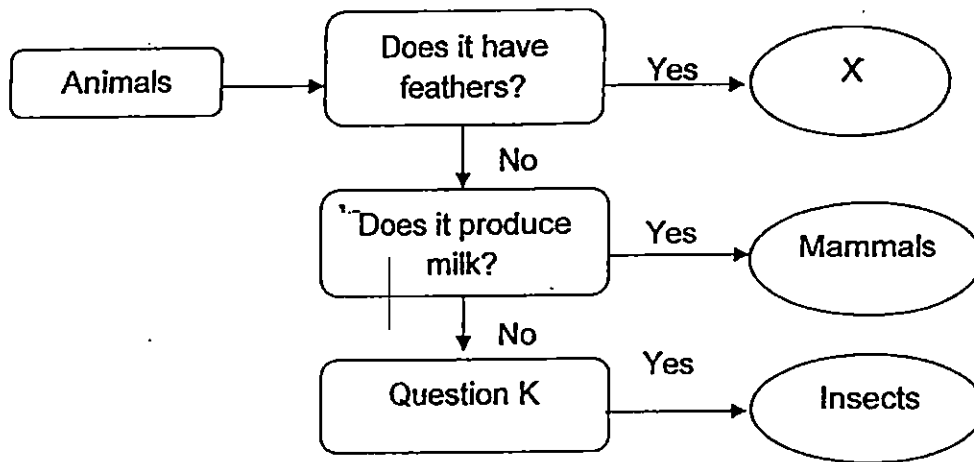
Leaf A and Leaf B are classified as shown in the classification chart below.



- (a) Classify Leaf C and Leaf D into the two groups. Write "Leaf C" and "Leaf D" in the chart above. [1]
- (b) What characteristics of leaves A, B, C and D were used to classify them in the chart above? [1]
-

Marks : / 2

18. Study the flowchart below

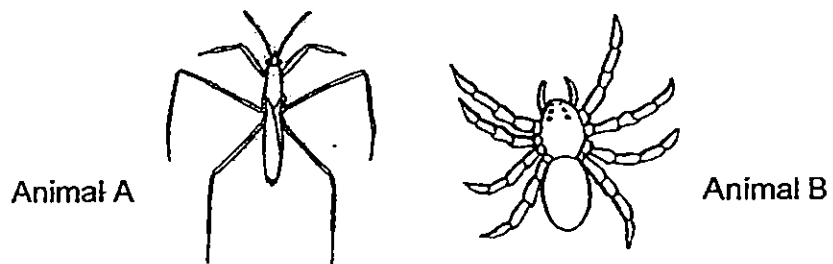


(a) (i) Which animal group can X possibly be? [1]

(ii) Write a possible question for Question K. [1]

Does it have _____
 _____?

(b) Study the diagram below carefully.



Compare animal A and B, explain why Animal B is not classified into the same group as A. [2]

Marks : / 4

19. Study the diagram of an amphibian below.

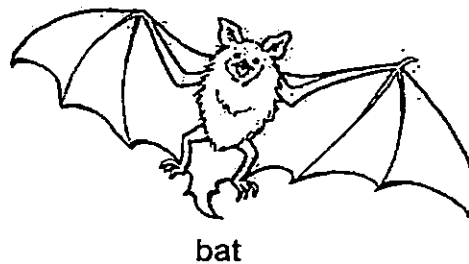
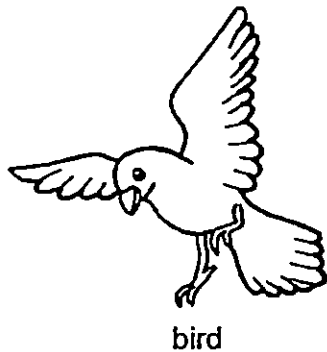


(a) State two common characteristics of amphibians. [2]

(i) _____

(ii) _____

(b) The animals below belong to two main groups based on their common characteristics.



State two differences in these common characteristics of the two animals. [2]

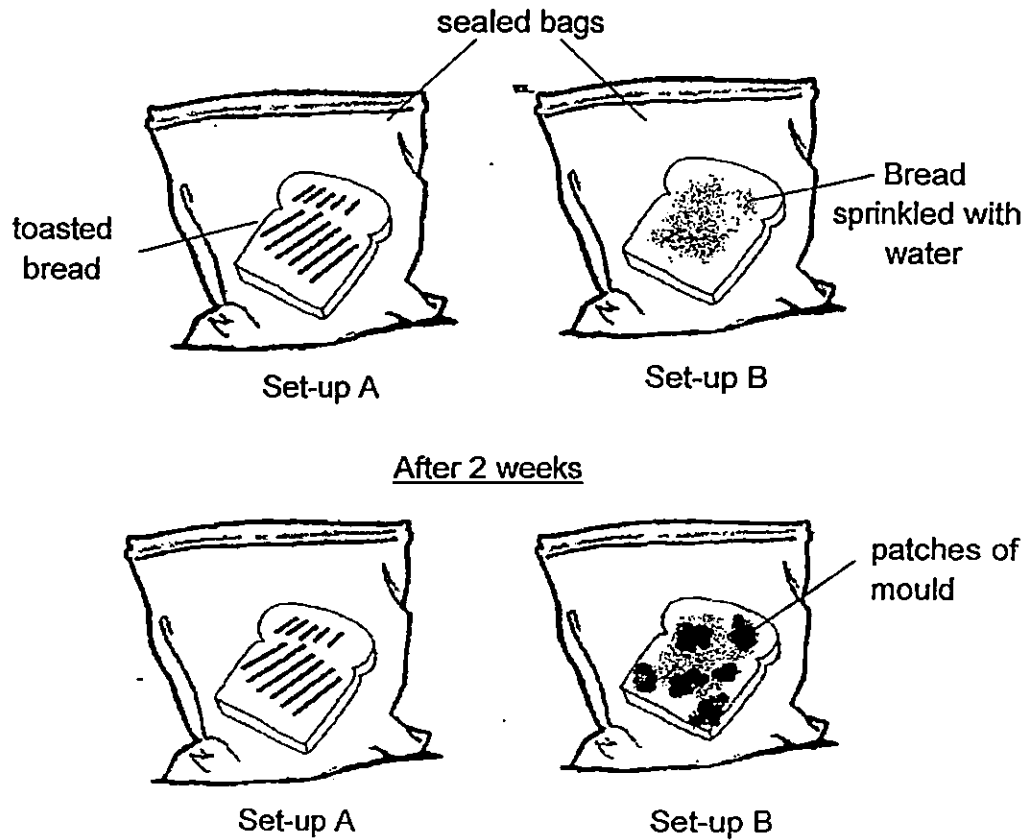
(i) _____

(ii) _____

Marks :

/ 4

20. Matthew carried out an experiment using two slices of bread in two set-ups A and B. He toasted a slice of bread and placed it in set-up A and sprinkled some water on the other slice of bread as shown in set-up B below.



After 2 weeks, he noticed patches of mould growing on the bread in set-up B while nothing grew on the bread in set-up A.

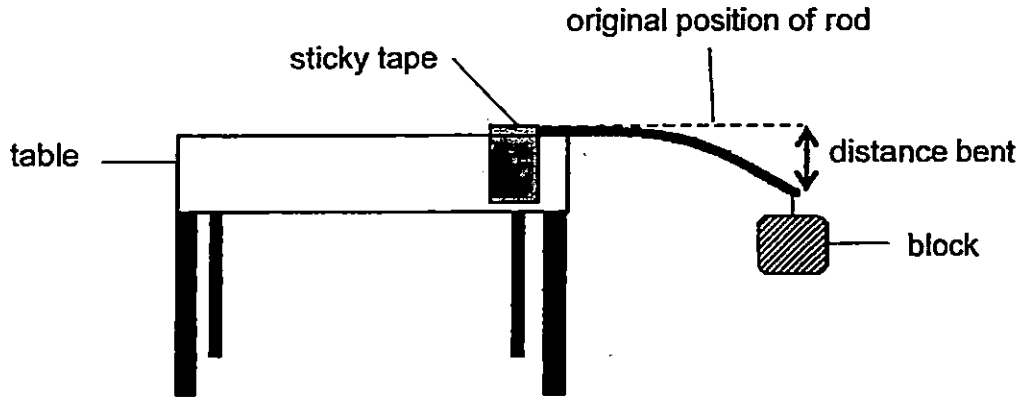
- (a) Which group of living things does mould belong to? [1]

- (b) Explain why mould grew in set-up B instead of set-up A. [1]

Marks :

/ 2

21. Raja conducted an experiment on a rod made of unknown material. The rod is taped firmly on edge the table top. When a block is hung at the end of the rod, the rod bent as shown in the diagram below.



- (a) Which property of the material is Raja testing? [1]

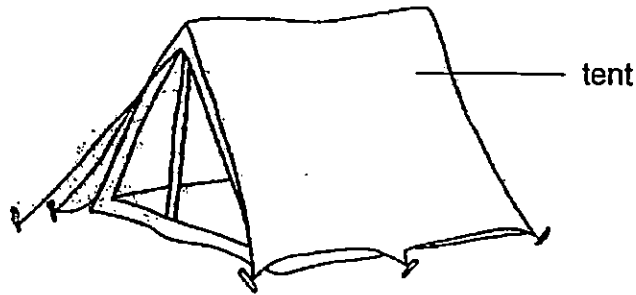
- (b) Raja repeated the experiment with 3 rods made of different materials Q, R and S. He recorded the distance bent by each rod using the same block in the table below.

Material	Distance bent (cm)
Q	3
R	6
S	5

From the results, what can Raja tell about the property of the materials of the three rods? [1]

Marks :

22. Jason sets up a tent using a material that does not tear easily as shown in the diagram. The tent protects him from getting wet when it rains. The tent is light and it can be folded into a small bag easily.



- (a) Name a material which can be used to make the tent. [1]

- (b) Apart from being light, state two other useful properties that the material in (a) should have which makes it suitable to be used for making a tent. [1]

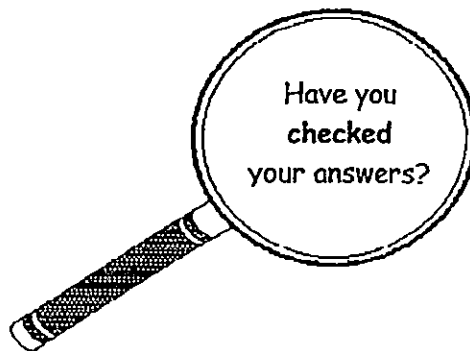
(i) _____

(ii) _____

Marks :

12

~ END OF PAPER ~



This is the property of Maha Bodhi School.

No part of this should be duplicated without permission from Maha Bodhi School



EXAM PAPER 2015

LEVEL : PRIMARY 3

SCHOOL : MAHA BODHI SCHOOL

SUBJECT : SCIENCE

TERM : SA1

Q 1	Q 2	Q 3	Q 4	Q 5	Q 6	Q 7	Q 8	Q 9	Q 10
3	4	2	4	1	4	4	3	2	3
Q 11	Q 12	Q 13	Q 14	Q 15					
2	1	2	2	3					

Q16ai) FALSE Q16aii) TRUE Q16aiii) TRUE Q16aiv) TRUE

Q16bi) It can move and talk to visitors when they talk to it.

Q16ii) The robot cannot grow / reproduce / need air, food and water.

Q17a. Group X - Leaf C 17a. Group Y - Leaf D

Q17b. They are classified according to the shape of the leaf.

Q18ai) Bird Q18aii) Does it have three body parts.

Q18b. Animal A has six legs but animal B has eight legs.

Q19ai) They have moist skin. Q19aii) They live in both land and in water.

Q19bi) The bird lay eggs but the bat gave birth to young.

Q19bii) The bird has feathers while the bat does not have feathers.

Q20a. Fungi Q20b. Set up B has more water than set up A. Mould needs water to grow.

Q21a. Flexibility or Flexible. Q21b. Material R bend the most.

Q22a. Rubber Q22bi) It is flexible Q22bii) It is waterproof.