



**MARIS STELLA HIGH SCHOOL (PRIMARY)**

**SEMESTRAL ASSESSMENT 1**

**SCIENCE**

**13 MAY 2015**

**BOOKLET A**

NAME: \_\_\_\_\_ ( )

CLASS: Primary 3 ( )

20 questions

30 marks

Total Time for Booklets A & B: 1 h

**DO NOT OPEN THIS BOOKLET UNTIL YOU ARE TOLD TO DO SO.**

**FOLLOW ALL INSTRUCTIONS CAREFULLY.**

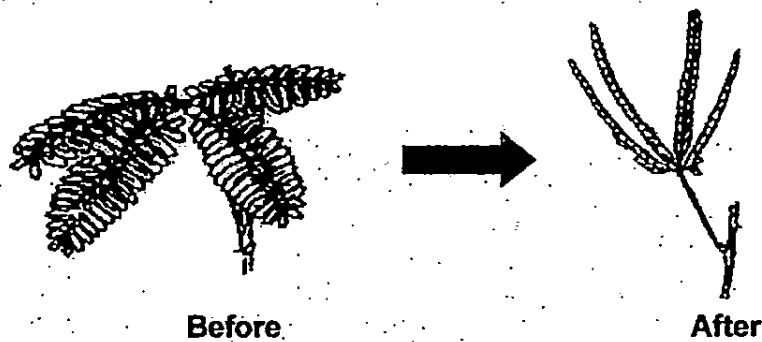
For each question from 1 to 20, four options are given. One of them is the correct answer. Make your choice (1, 2, 3 or 4) and shade the oval (1, 2, 3 or 4) on the Optical Answer Sheet. Questions 1 to 10 carry 1 mark each. Questions 11 to 20 carry 2 marks each.

1 Which of the following reproduce(s) from spores?

- A Mango tree
- B Mushroom
- C Bird's nest fern

- (1) A only
- (2) B only
- (3) A and C only
- (4) B and C only

2 The pictures below show how the mimosa plant looks before and after it is touched.

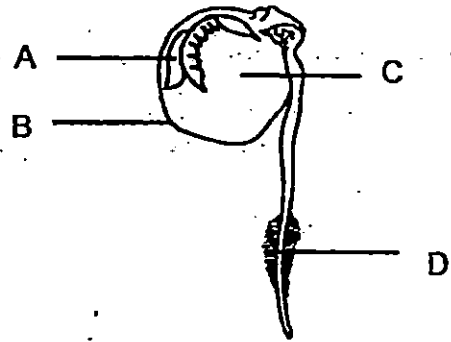


The observation made above shows that living things \_\_\_\_\_

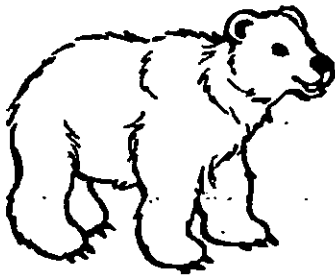
- (1) will die
- (2) can reproduce
- (3) need air, food and water
- (4) respond to changes around them

3 The diagram on the right shows a germinating seed. Where does the germinating seed get its food from?

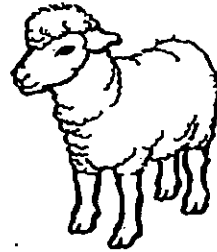
- (1) A
- (2) B
- (3) C
- (4) D



4 Jerald observed the pictures of Animal A and B as shown below.



Animal A



Animal B

After looking at the pictures, Jerald said that they are mammals.

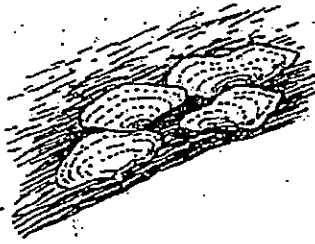
Which of the following characteristics help Jerald to conclude that they are mammals?

- (1) The number of legs
- (2) The food that they eat
- (3) The places that they live in
- (4) The outer covering of the animals

5 Plants and animals are similar because they \_\_\_\_\_

- (1) lay eggs
- (2) can grow
- (3) can make their own food
- (4) can move from one place to another place

6. Compare the bracket fungus and bird nest's fern.



**Bracket Fungus**

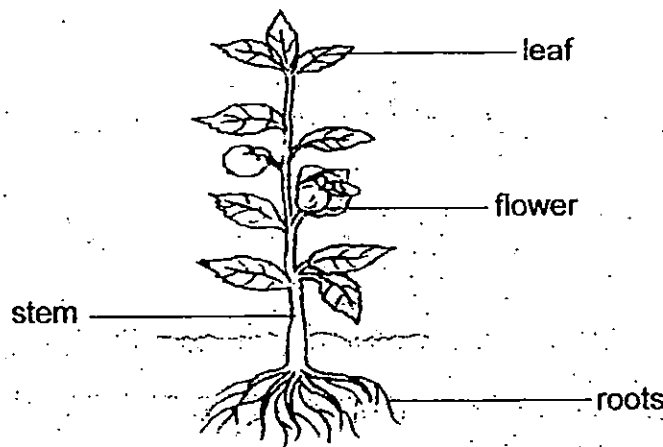


**Bird Nest's Fern**

Which one of the following statements is incorrect ?

- (1) Both contain spores.
- (2) Both feed on dead animals.
- (3) Both are non-flowering plants.
- (4) Both do not need sunlight to make food.

7 Study the diagram of the plant below.



Which of the plant part is not found in all plants?

- (1) leaf
- (2) stem
- (3) roots
- (4) flower

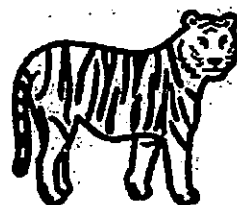
8 The four animals below are grouped together.



Deer



Spiny anteater



Tiger



Penguin

Mrs Lim asked her students to pick the animal which does not belong to the same group as the others. The table below shows their choices and reasons.

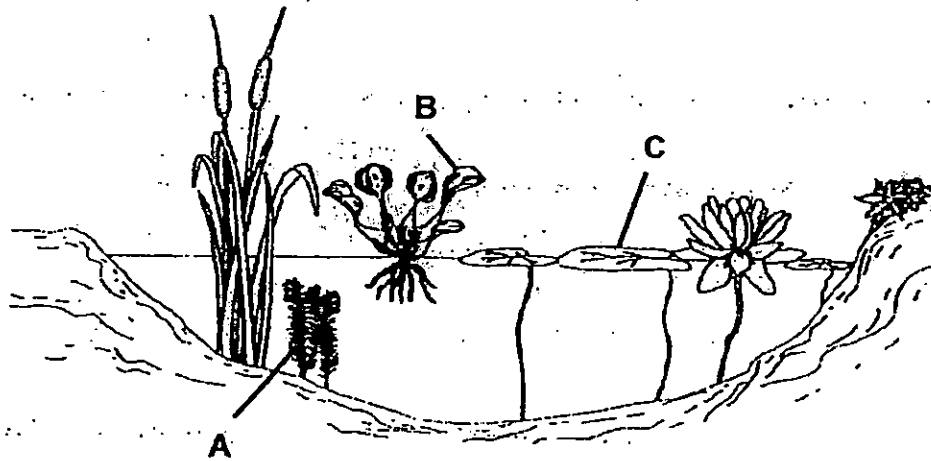
Who has correctly identified the animal and reason for his choice?

	Student	Animal that <u>does not</u> belong in the group	Reason
(1)	Alex	Tiger	It is an animal-eater.
(2)	Ben	Deer	It has fur on its body.
(3)	Clement	Spiny anteater	It reproduces by laying eggs.
(4)	Derek	Penguin	It has feathers as outer body covering.

9 Which one of the following statements about bacteria is correct?

- (1) Bacteria do not die.
- (2) Bacteria are not living things.
- (3) Bacteria can only be seen under a microscope.
- (4) Bacteria do not respond to changes around them.

10 Study the diagram below.



Which of the following correctly describes each aquatic plant?

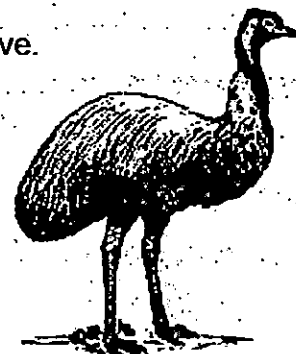
	A	B	C
(1)	Partially submerged	Floating	Floating
(2)	Partially submerged	Partially submerged	Floating
(3)	Fully submerged	Partially submerged	Partially submerged
(4)	Fully submerged	Floating	Partially submerged

11 Some students made the following four comments on an emu.

- A It is a bird because it has two legs.
- B It is a bird because it has feathers.
- C It is not a bird because it cannot fly.
- D It is a bird because it gives birth to young alive.

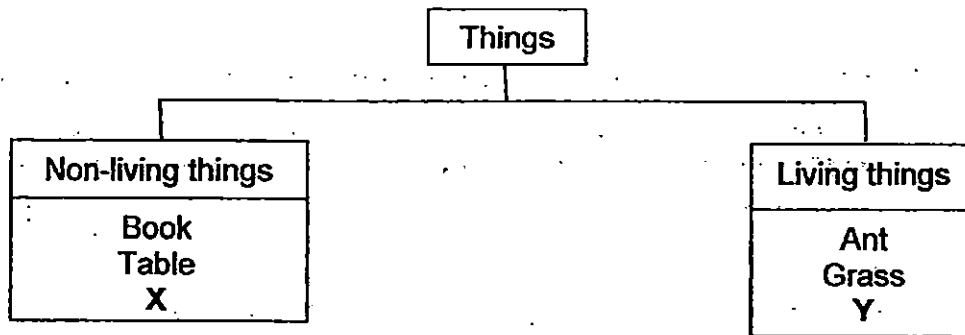
Which of the above comments are correct?

- (1) A only
- (2) B only
- (3) A and B only
- (4) C and D only



Emu

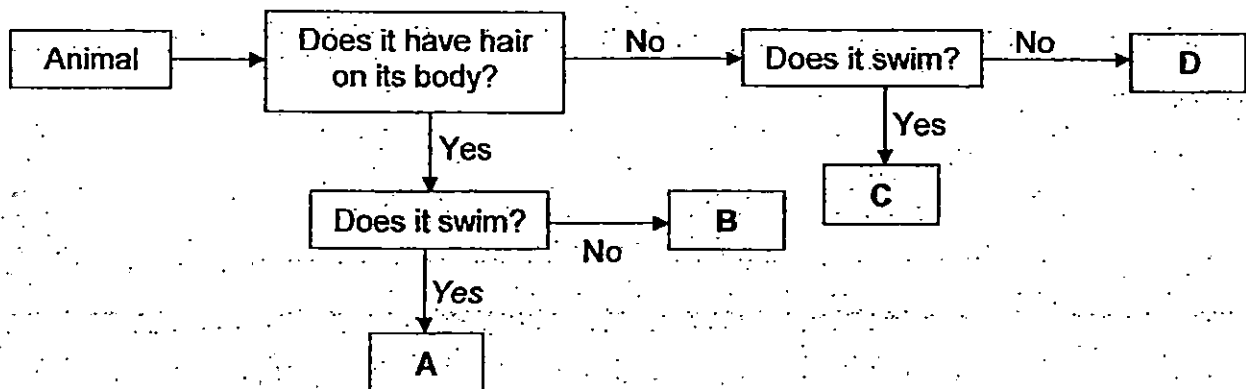
12. Study the classification chart below.



What could X and Y be?

	X	Y
(1)	Cow	Car
(2)	Duck	Pig
(3)	Car	Cow
(4)	Jacket	Stone

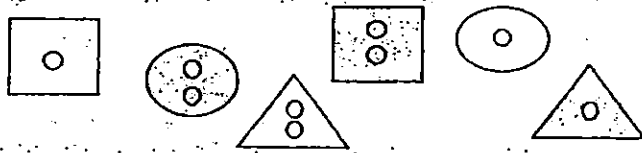
13. Study the flow chart below.



Which of the following letter represents a rabbit?

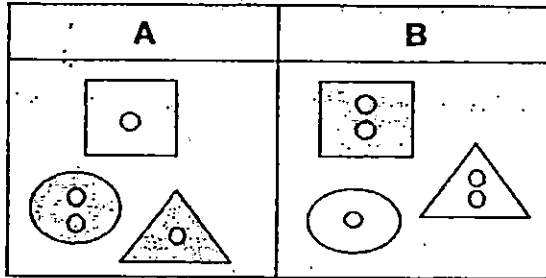
- (1) A
- (2) B
- (3) C
- (4) D

14 Some buttons of the same size were classified.

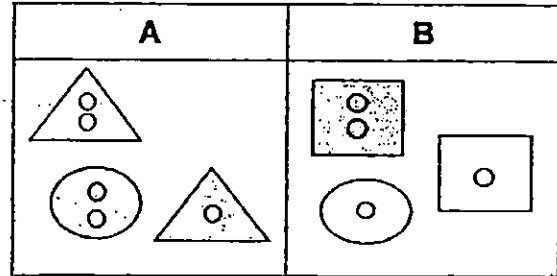


Which of the following classification chart show a possible way of classifying the buttons?

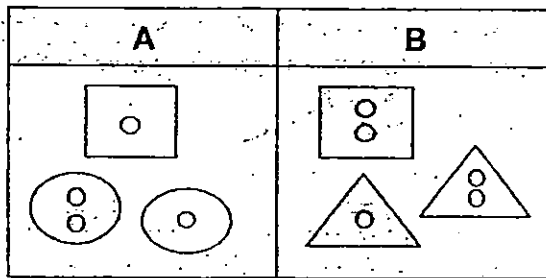
(1)



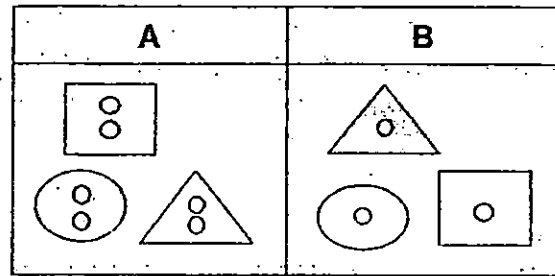
(2)



(3)



(4)



15 The diagram below shows organism A.



Organism A

Z is found on the gills of organism A. What is the function of Z?

- (1) It helps organism A to reproduce.
- (2) It helps organism A to make food.
- (3) It helps organism A to grow bigger.
- (4) It helps organism A to take in water.

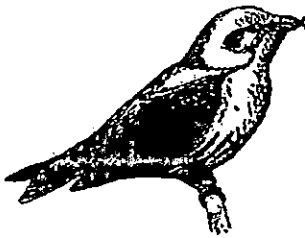


16. Which of the following characteristic(s) can we use to tell an animal apart from a plant?

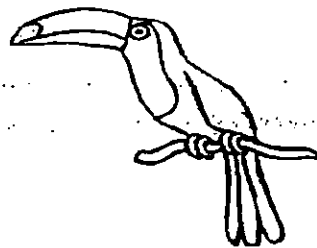
- A An animal needs air but a plant does not.
- B An animal cannot make its own food but a plant can.
- C An animal can move on its own but a plant does not.
- D An animal can respond to changes but a plant cannot.

- (1) C only
- (2) A and D only
- (3) B and C only
- (4) A, C and D only

17 Study birds X and Y below.



Bird X



Bird Y

Based on the pictures above, what is the similarity and difference between the two birds?

	Similarity	Difference
(1)	Both have wings.	Bird X lays eggs but bird Y gives birth to young alive.
(2)	Both have a tail.	Bird X has a short beak but bird Y has a long beak.
(3)	Both lay eggs.	Bird X has longer legs than bird Y.
(4)	Both have a long beak.	Bird X can fly but bird Y cannot fly.

18. The table below shows the characteristics of Organisms A, B and C.


A tick (✓) indicates the presence of the characteristic.

Characteristics	Organism A	Organism B	Organism C
Respond to changes around them	✓	✓	✓
Can reproduce	✓	✓	✓
Moves from place to place		✓	
Produce its own food	✓		

Based on the information provided in the table above, which of the following correctly identify organisms A, B and C?


	Organism A	Organism B	Organism C
(1)	Plant	Fungi	Animal
(2)	Plant	Animal	Fungi
(3)	Fungi	Animal	Plant
(4)	Animal	Plant	Fungi

19 Jerry planted four plants, A, B, C and D, into four identical pots and exposed them to different amount of water and light as shown below.




**Plant A**

- Has water
- Has sunlight




**Plant B**

- Has water
- No sunlight



**Plant C**

- No water
- Has sunlight



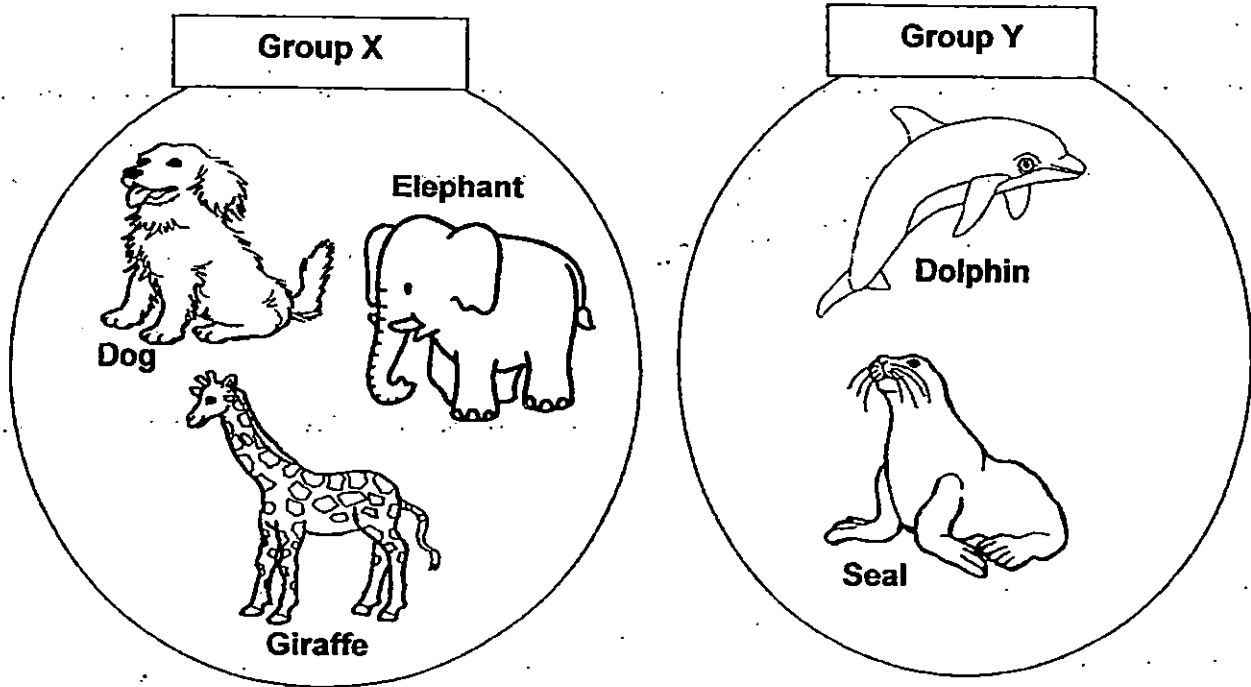
**Plant D**

- No water
- No sunlight

Which one of the plants will survive the longest?

- (1) Plant A
- (2) Plant B
- (3) Plant C
- (4) Plant D

20 Study the pictures below.



The animals in Group X and Group Y are classified according to \_\_\_\_\_

- (1) what they eat
- (2) where they live
- (3) their outer covering
- (4) how they reproduce

**End of Booklet A**



MARIS STELLA HIGH SCHOOL (PRIMARY)

SEMESTRAL ASSESSMENT 1

SCIENCE

13 MAY 2015

BOOKLET B

NAME: \_\_\_\_\_ ( )

CLASS: Primary 3 ( )

8 questions

20 marks

Total Time for Booklets A & B: 1 h

DO NOT OPEN THIS BOOKLET UNTIL YOU ARE TOLD TO DO SO.  
FOLLOW ALL INSTRUCTIONS CAREFULLY.

BOOKLET A: \_\_\_\_\_ / 30

BOOKLET B: \_\_\_\_\_ / 20

TOTAL: \_\_\_\_\_ / 50

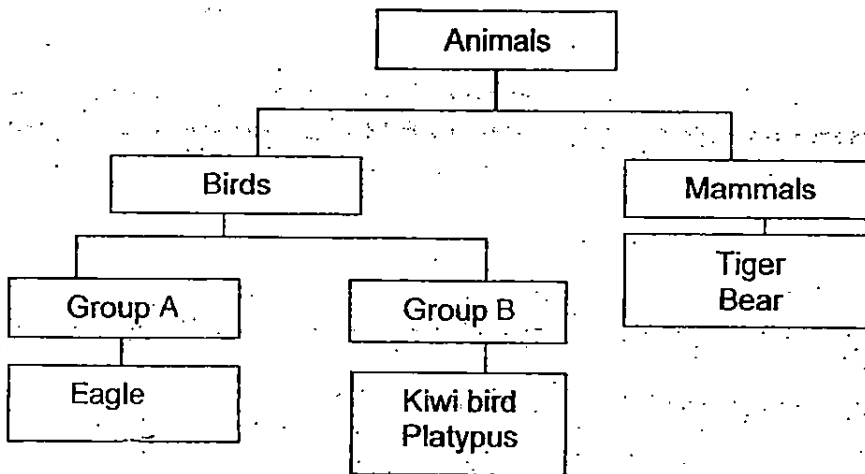
PARENT'S SIGNATURE: \_\_\_\_\_

For questions 21 to 28, write your answers in the space provided. The marks for each question is shown in the brackets [ ] at the end of each question. (20 marks)

21 Write 'True' or 'False' in the space provided for the following statements. [2]

Statements		True / False
(a)	Living things will die.	
(b)	Bat is a bird as it can fly.	
(c)	Mushroom is a non-flowering plant.	
(d)	A car is a living thing as it can move from one place to another place.	

22 Study the classification chart given below.



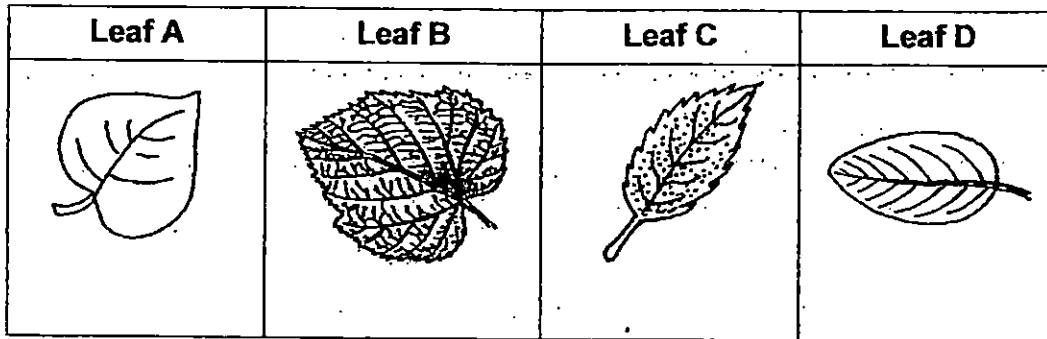
(a) What is a suitable heading for Group A and Group B? [1]

Group A: \_\_\_\_\_

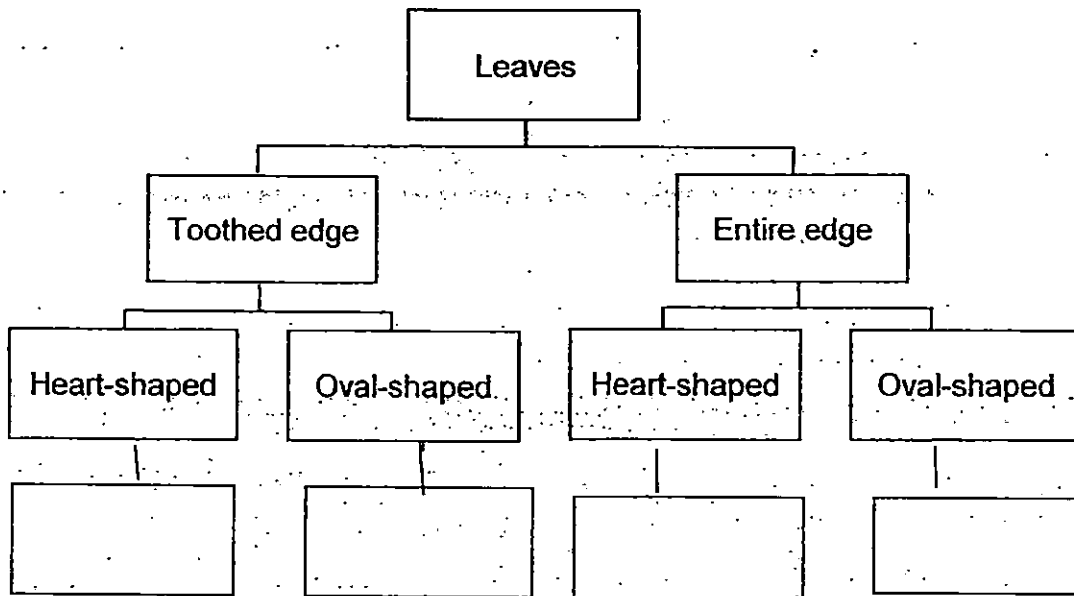
Group B: \_\_\_\_\_

(b) Which one of the animals is classified wrongly? \_\_\_\_\_ [1]

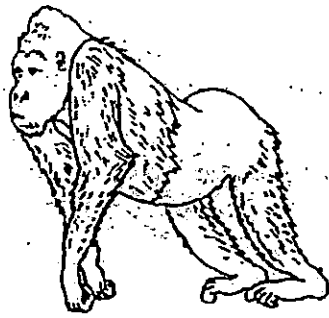
23 Study leaves A, B, C and D below.



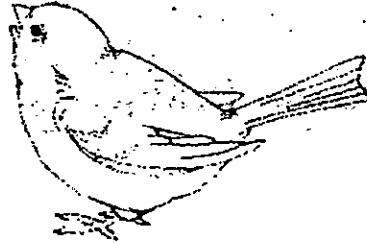
Complete the classification chart by filling in Leaf A, B, C and D in the boxes provided. [2]



24 Study the 2 animals shown below.



**Animal A**



**Animal B**

(a) Based only on your observations of the animals above, state 2 differences between animals A and B. [2]

(i)

---

---

(ii)

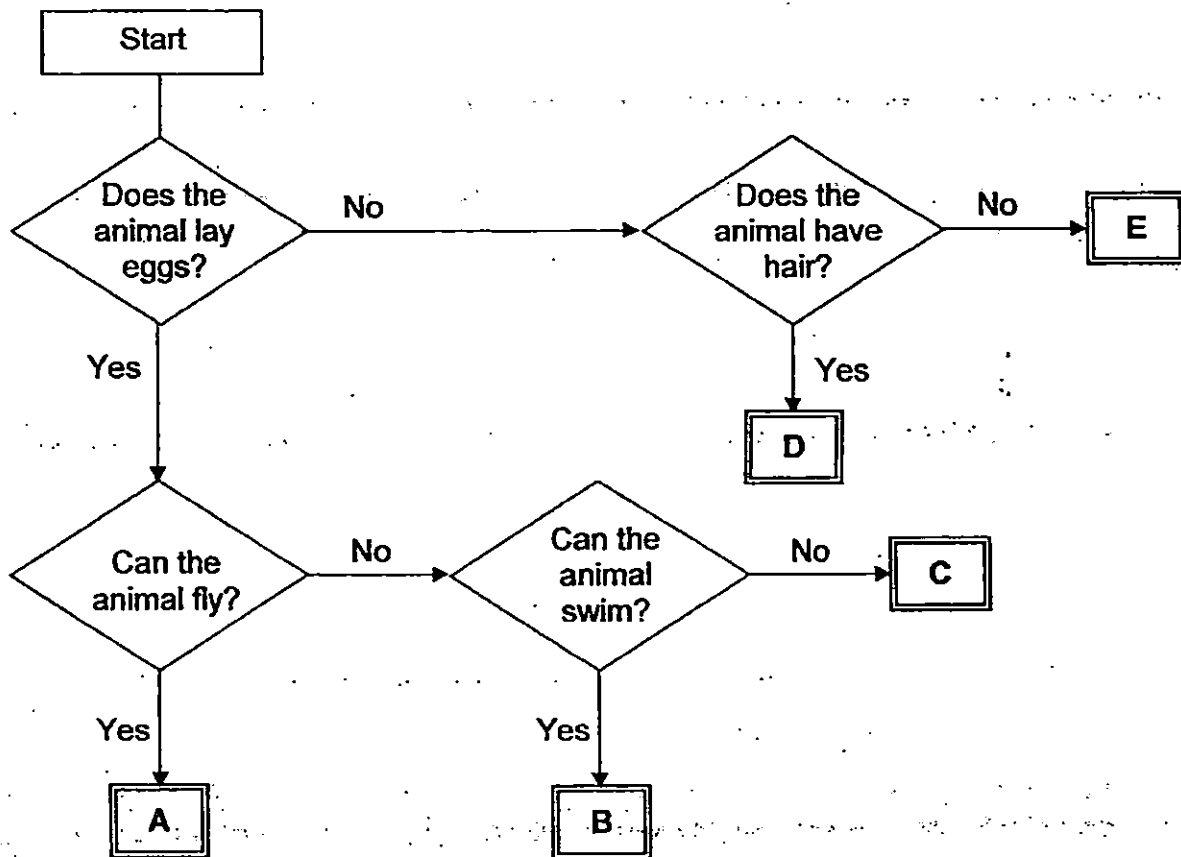
---

---

(b) State an animal that has the same method of reproduction as animal A. [1]

---

25 Study the flow chart below.



(a) Match each animal below with a correct letter (A, B, C, D or E) in the flow chart. [1]

ANIMAL	LETTER
Ostrich	
Elephant	

(b) Based on the chart above, state one similarity between animal A and animal B. [1]

---



---

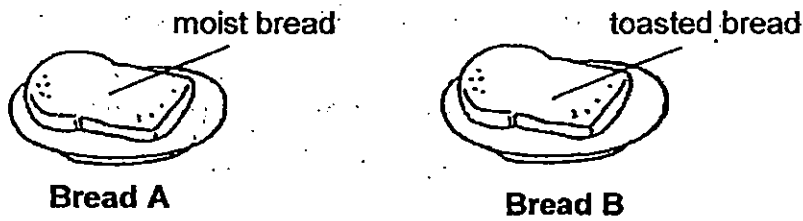
(c) Based on the chart above, describe animal E. [1]

---

	3
--	---



26 Tom placed a piece of moist bread and a piece of toasted bread in his kitchen as shown below.



(a) State the conditions that the mould needs in order to grow. [1]

---

(b) Which piece of bread (A or B) will turn mouldy first? [1]

---

(c) Give a reason for your answer in (b). [1]

---

---

27 Study the pictures of the different stages of Plant A below.



P



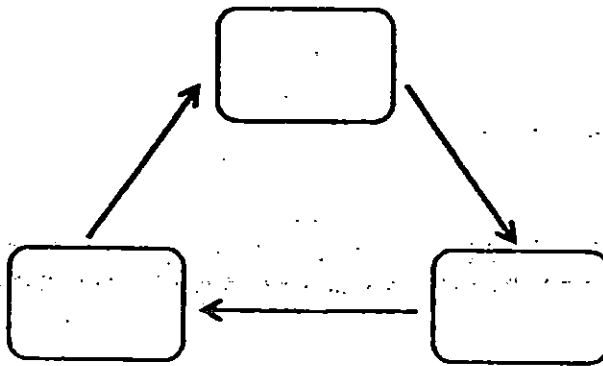
Q



R

(a) Fill in the boxes with P, Q and R to show the life cycle of Plant A.

[1]



(b) Which part of the plant will grow first when a seed germinates?

[1]

---

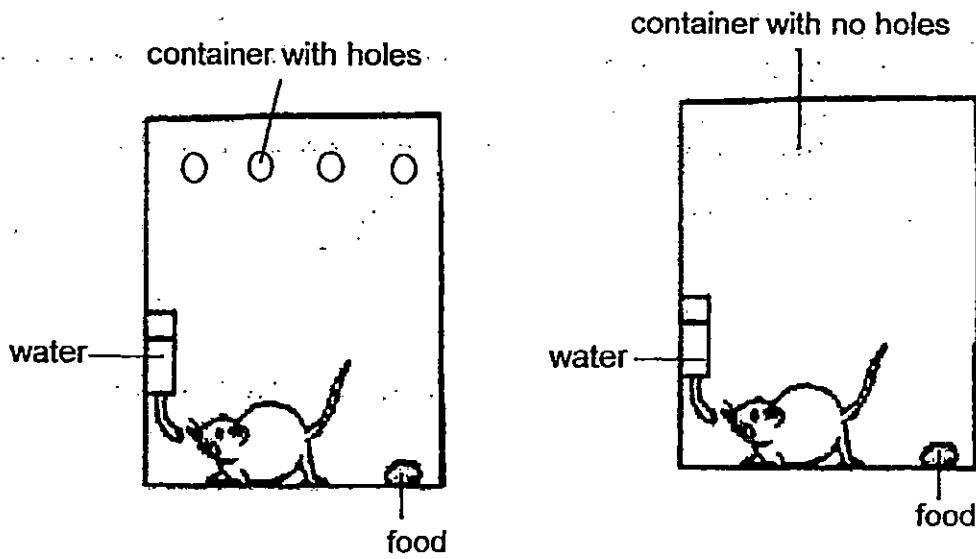
(c) Give a reason why life cycles are important.

[1]

---

---

28. In an experiment, a mouse was kept in two separate containers as shown below.



(a) In which container will the mouse survive longer? Tick (✓) the correct box. [1]

Container with holes	
Container with no holes	

(b) What characteristic of living things does the above experiment show? [1]

---



---

End of Booklet B

# Primary School Test Paper Singapore

*Save Your Money, Save Your Time, No More Worries*

Powered by [www.testpaper.biz](http://www.testpaper.biz)



**EXAM PAPER 2015**

**LEVEL : PRIMARY 3**

**SCHOOL : MARIS STELLA HIGH SCHOOL**

**SUBJECT : SCIENCE**

**TERM : SA1**

## BOOKLET A

Q1	Q2	Q3	Q4	Q5	Q6	Q7	Q8	Q9	Q10
4	4	3	4	2	1	4	4	3	4
Q11	Q12	Q13	Q14	Q15	Q16	Q17	Q18	Q19	Q20
2	3	2	4	1	3	2	2	1	2

**BOOKLET B – SEE ATTACHED ANSWER.**

Booklet B

Qn	Suggested Answers
21	(a) True (b) False (c) False (d) False
22	a) <u>0 22</u> Group A: can fly Group B: cannot fly
23	<u>B C A D</u> b) platyous

24	(a) Animal A has 4 legs but animal B has 2 legs./ Animal A has more legs than B Animal A has hair but animal B has a feathers. /Animal B has a beak but animal A does not have. Animal B has wings but animal A has no wings./ Animal B has a tail but animal A has no tail. (b) guppy, dog, sheep, cow, horse, etc (any animal that gives birth to young alive.)
25	(a) Ostrich: C Elephant: D (b) Both lay eggs. (c) Animal E <u>does not lay eggs / gives birth to young alive(0.5m) and have no hair.</u>

26	<p>(a) The mould needs <b>air</b> (oxygen), <b>water</b> and <b>warmth</b> to grow</p> <p>(b) A</p> <p>(c) There is <b>moisture</b> (water) in the <b>bread</b> . / The <b>bread</b> has <b>water</b> for the mould to grow.</p>
27	<p>(a)</p> <div data-bbox="223 392 598 638" data-label="Diagram"> <pre> graph TD     R[R] --&gt; Q[Q]     Q[Q] --&gt; P[P]     P[P] --&gt; R[R]     </pre> </div> <p>(b) Roots</p> <p>(c) Life cycles ensure the <b>continuity of the species</b> / its own kind. / Living things will not become extinct.</p>
28	<p>(a) tick the container with holes</p> <p>(b) Living things need <b>air</b> to <b>survive</b>.</p>