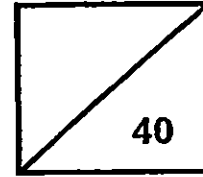




Rosyth School
Semestral Examination 1 for 2015
SCIENCE
Primary 3



Name: _____

Total
Marks:

Class: Pr 3 _____ Register No. _____ Duration: 1 h 30 min

Date: 14 May 2015 Parent's Signature: _____

BOOKLET A

Instructions to Pupils:

1. Do not open the booklets until you are told to do so.
2. Follow all instructions carefully.
3. This paper consists of 2 booklets, Booklet A and Booklet B.
4. For questions 1 to 20 in Booklet A, shade the correct ovals on the Optical Answer Sheet (OAS) provided using a 2B pencil.
5. For questions 21 to 32, give your answers in the spaces given in Booklet B.

* This booklet consists of 12 pages.

Part I (40 MARKS)

For each question from 1 to 20, four options are given. One of them is the correct answer. Make your choice (1, 2, 3 or 4) and shade the correct oval (1, 2, 3 or 4) on the Optical Answer Sheet (OAS).

1. Study the table carefully.

Living Things	Non-Living Things
Lion Sunlight Mushroom	Table Clouds Race Car

Which one of the above has been grouped wrongly?

- (1) Lion
 - (2) Clouds
 - (3) Sunlight
 - (4) Race Car
2. Three students made the following statements about living things.

Adam: All living things have hair.

Bala: All living things can make their own food.

Clara: All living things reproduce their own kind.

Who has/have made the correct statement(s)?

- (1) Bala only
 - (2) Clara only
 - (3) Adam and Bala only
 - (4) Bala and Clara only
3. Which of the following statement(s) show/s that living things move from place to place by themselves?

A: Jenny grows taller after 6 months.

B: A plant folds its leaves when touched.

C: A cat runs away when it sees a person nearby.

- (1) A only
- (2) C only
- (3) A and C only
- (4) A, B and C

4. Which characteristic(s) is/are similar between plants and animals?

- (1) Both lay eggs and die.
- (2) Both make their own food.
- (3) Both grow and reproduce.
- (4) Both move about to get food.

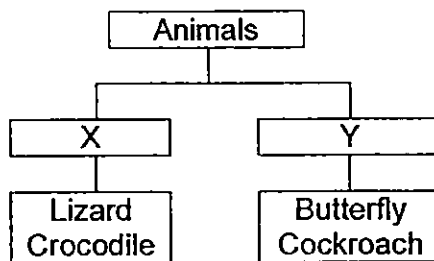
5. Sam caught an organism and observed its behaviour. He described its behaviour as follows:

- It lays eggs.
- It does not fly.
- It has three body parts.

Which one of the following groups does the organism belong to?

- (1) Bird
- (2) Insect
- (3) Reptile
- (4) Mammal

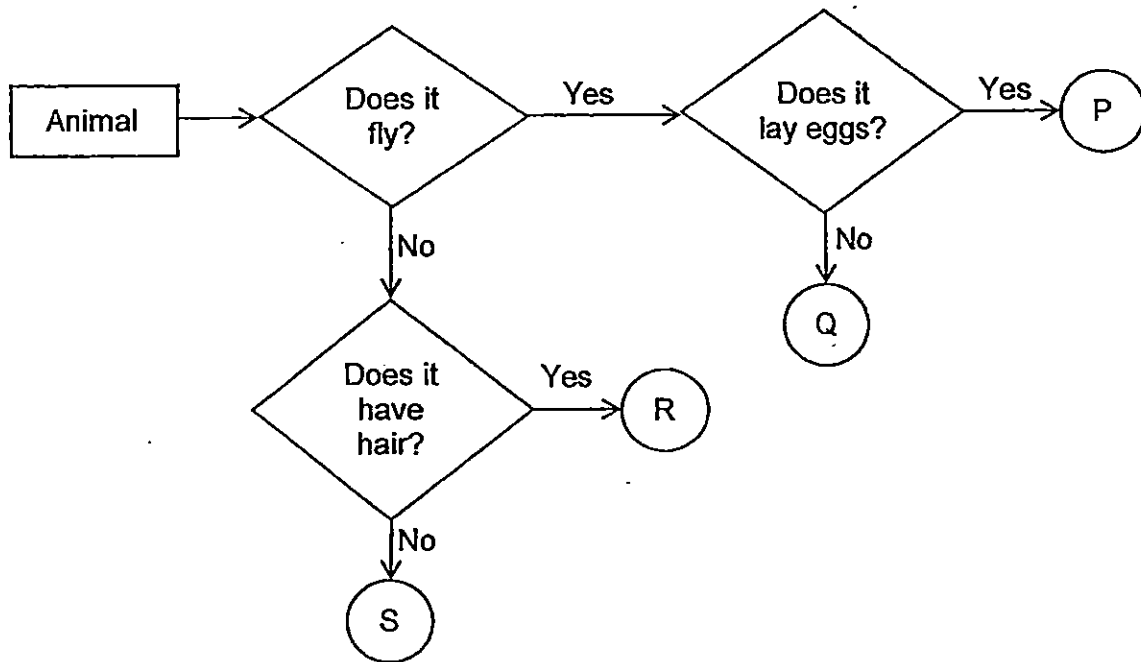
6. Study the classification chart below.



Which one of the following set of headings are best represented by X and Y?

	X	Y
(1)	With gills	Without gills
(2)	With scales	Without scales
(3)	Lives in water	Lives on land
(4)	Lays eggs in water	Lays eggs on land

Study the flow chart below carefully and answer questions 7 and 8.



7. Which of the following is/are a characteristic(s) of animal S?

A	It has hair.
B	It does not fly.
C	It does not lay eggs.

- (1) A only
 (2) B only
 (3) B and C only
 (4) A, B and C

8. Which letter, P, Q, R or S, best represents the animal shown below?



- (1) P
 (2) Q
 (3) R
 (4) S

9. Which one of the following statements is true for all plants?

- (1) All plants bear flowers.
- (2) All plants grow on land.
- (3) All plants reproduce through seeds.
- (4) All plants need sunlight to make food.

10. Ashton saw a plant in the school garden. He used a list of questions to decide what kind of plant it was. His answers to the questions are as follows:

Question	Answer
Does it bear fruits?	Yes
Does it live on land?	Yes
Does it have spores?	No

Which one of the following is most likely what Ashton saw?

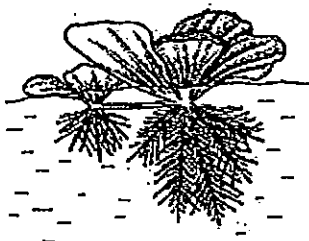
(1)



(2)







(3)



(4)



11. Study the classification table below.

Living Things	
Group A	Group B
	
	

The living things in Group A and Group B have similar characteristics. Which of the following statement(s) is/are true?

X: All the living things are plants.

Y: All the living things make their own food.

Z: All the living things need air, food and water.

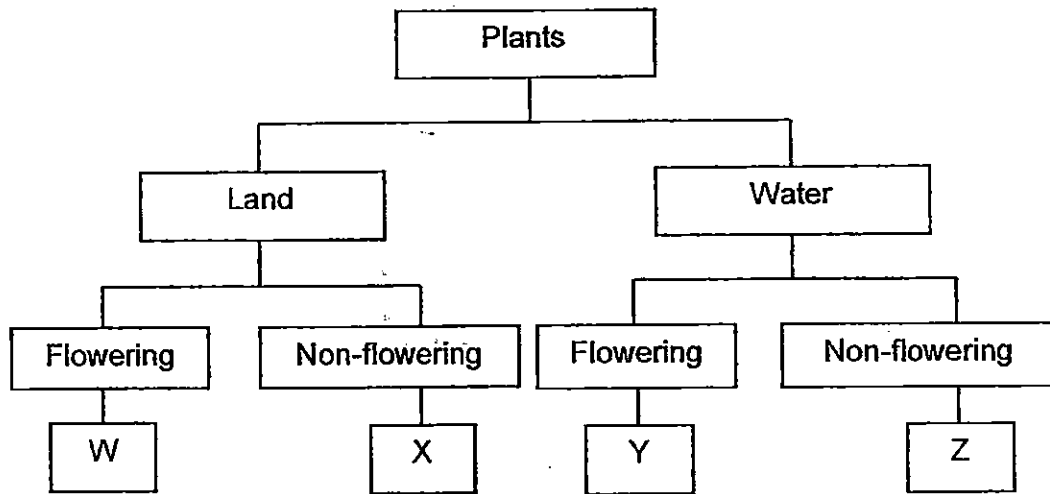
(1) X only

(3) Y and Z only

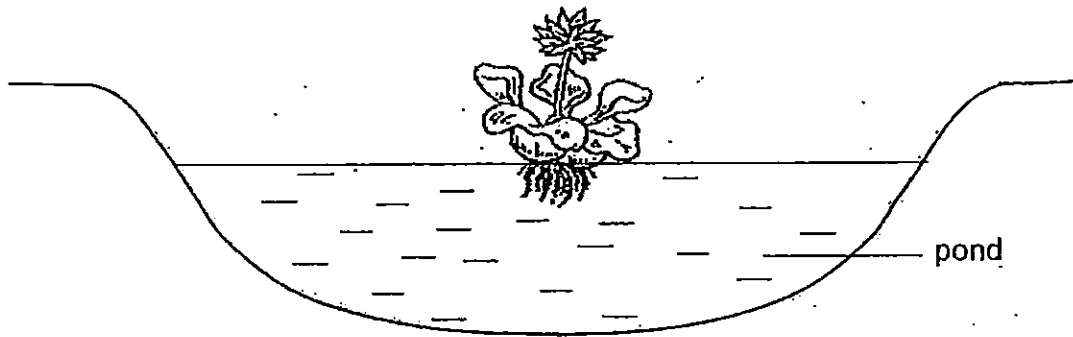
(2) Z only

(4) X, Y and Z

12. Study the classification chart below.



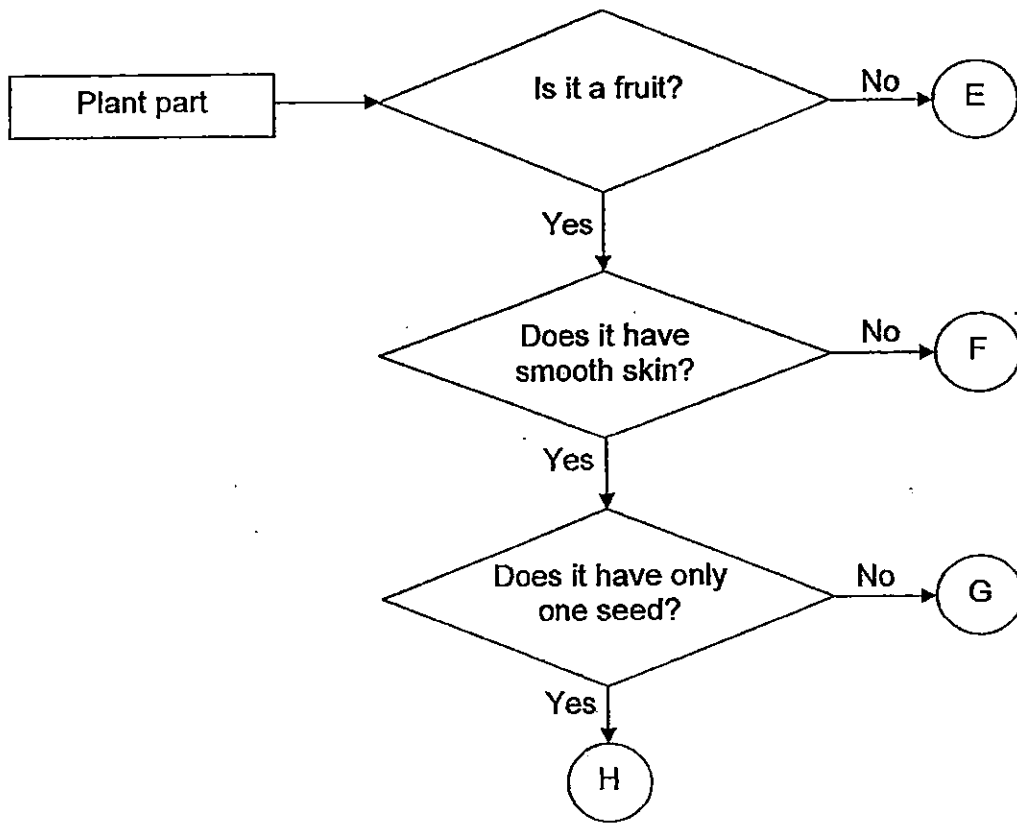
Which letter, W, X, Y or Z, best represents the plant as shown below?



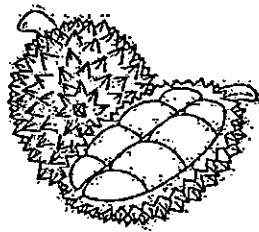
- (1) W
- (3) Y

- (2) X
- (4) Z

13. Study the flow chart ~~below~~ ^{below}.



Which letter, E, F, G or H, best represents the plant part as shown below?



- (1) E
- (3) G

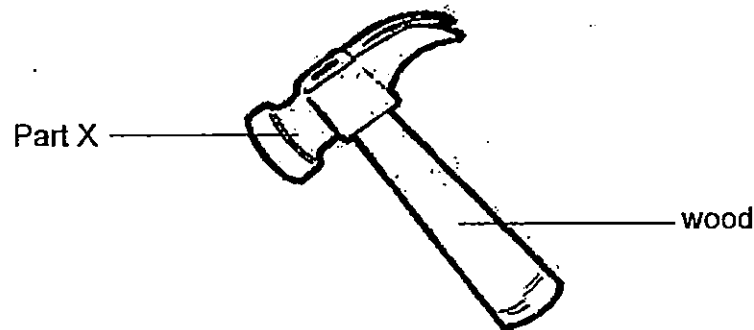
- (2) F
- (4) H

16. Natalie wore a raincoat over her uniform and walked in the rain. When she reached home, she noticed that her uniform was dry.

What is the property of the raincoat that can be inferred from Natalie's observation?

- | | |
|----------------|------------------|
| (1) Strength | (2) Flexibility |
| (3) Waterproof | (4) Transparency |

17. The picture below shows a hammer.

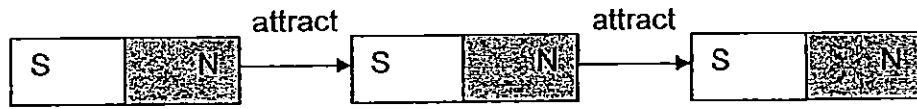


Part X of the hammer is usually made of metal while the handle is made of wood. Which one of the following properties is the reason that part X is made of metal?

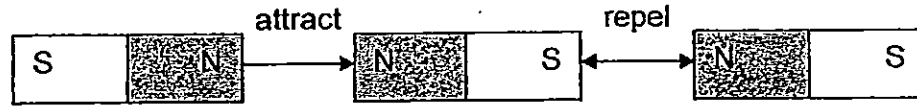
- (1) It is strong.
- (2) It is flexible.
- (3) It is waterproof.
- (4) It sinks in the water.

18. Which one of the following diagrams shows the property of magnet correctly?

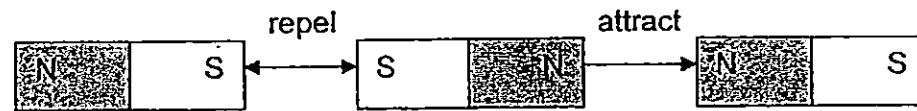
(1)



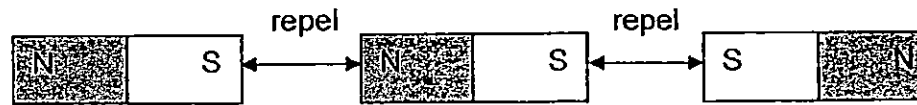
(2)



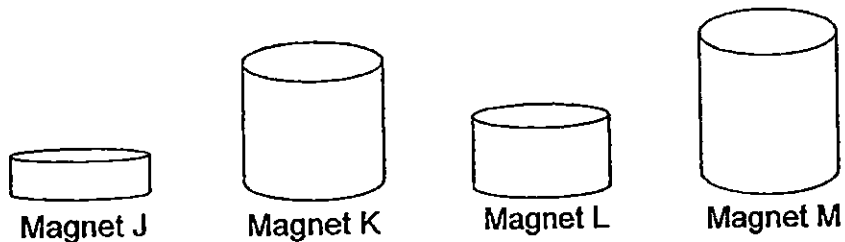
(3)



(4)



20. Muthu had four different magnets as shown below. He brought them close to some paper clips.



He observed and recorded the number of paper clips attracted by each magnet in the table as shown below.

Magnets	Number of paper clips attracted
J	28
K	17
L	12
M	15

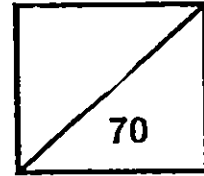
What can he conclude from the results above?

- (1) The strength of a magnet depends on its size.
- (2) Bigger magnets are weaker than smaller magnets.
- (3) Smaller magnets are stronger than bigger magnets.
- (4) The strength of a magnet does not depend on its size.

End of Booklet A



Rosyth School
Semestral Examination 1 for 2015
SCIENCE
Primary 3



Name: _____

Total
Marks:

Class: Pr 3 _____

Register No. _____

Duration: 1 h 30 min

Date: 14 May 2015

Parent's Signature: _____

BOOKLET B

Instructions to Pupils:

1. For questions 21 to 32, give your answers in the spaces given in this Booklet B.

	Maximum	Marks Obtained
Booklet A	40 marks	
Booklet B	30 marks	
Total	70 marks	

Part II (30 MARKS)

For questions 21 to 32, write your answers in this booklet.

21. Charlie carried out an observation on two items A and B. The table below shows his findings.

Item	Does it move on its own?	Does it grow?	Does it reproduce?
A	Yes	Yes	Yes
B	Yes	No	No
C	<input type="text"/>	<input type="text"/>	<input type="text"/>

- (a) State the differences between items A and B. (1m)

Difference 1: _____

Difference 2: _____

- (b) Charlie was told that item C is a plant. Complete the table above by writing 'Yes' or 'No' about item C in the boxes. (1m)

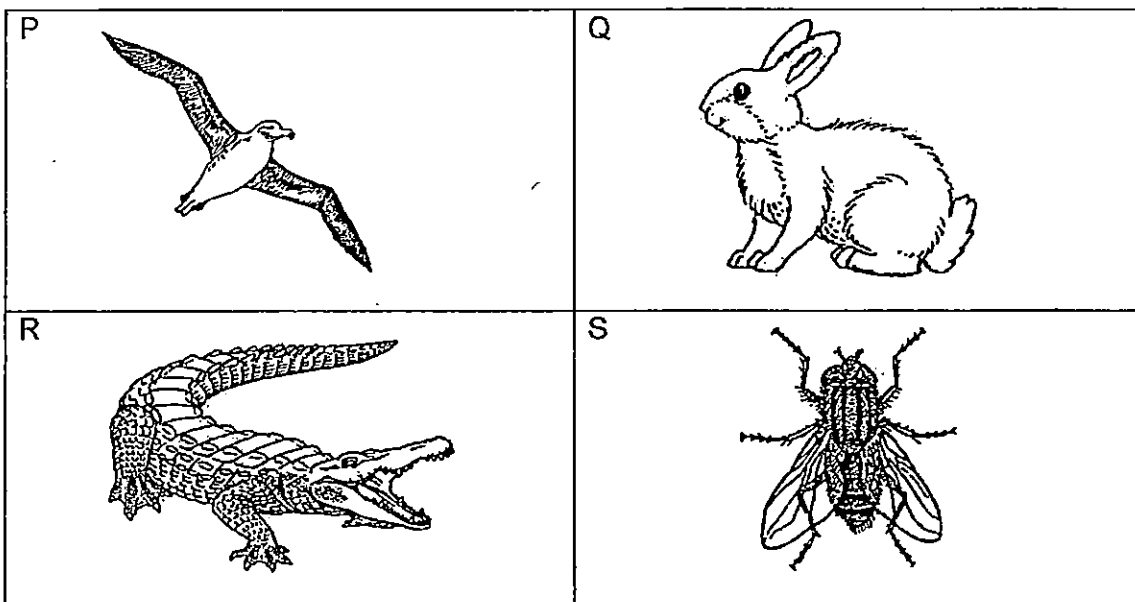
22. Benjamin bought an equal number of male and female guppies and kept them in a fish tank. He recorded the number of guppies in the fish tank at the end of each month over a period of four months. His findings are as shown below.

Month	Number of guppies
1 st	5
2 nd	14
3 rd	19
4 th	23

- (a) From the table above, what do you observe about the number of guppies from the 1st Month to 4th Month? (1m)

- (b) What is the characteristic of living things observed from the 1st Month to 4th Month? (1m)

23. Paul cut out photographs of different animals from a magazine. The photographs were labelled as shown below.



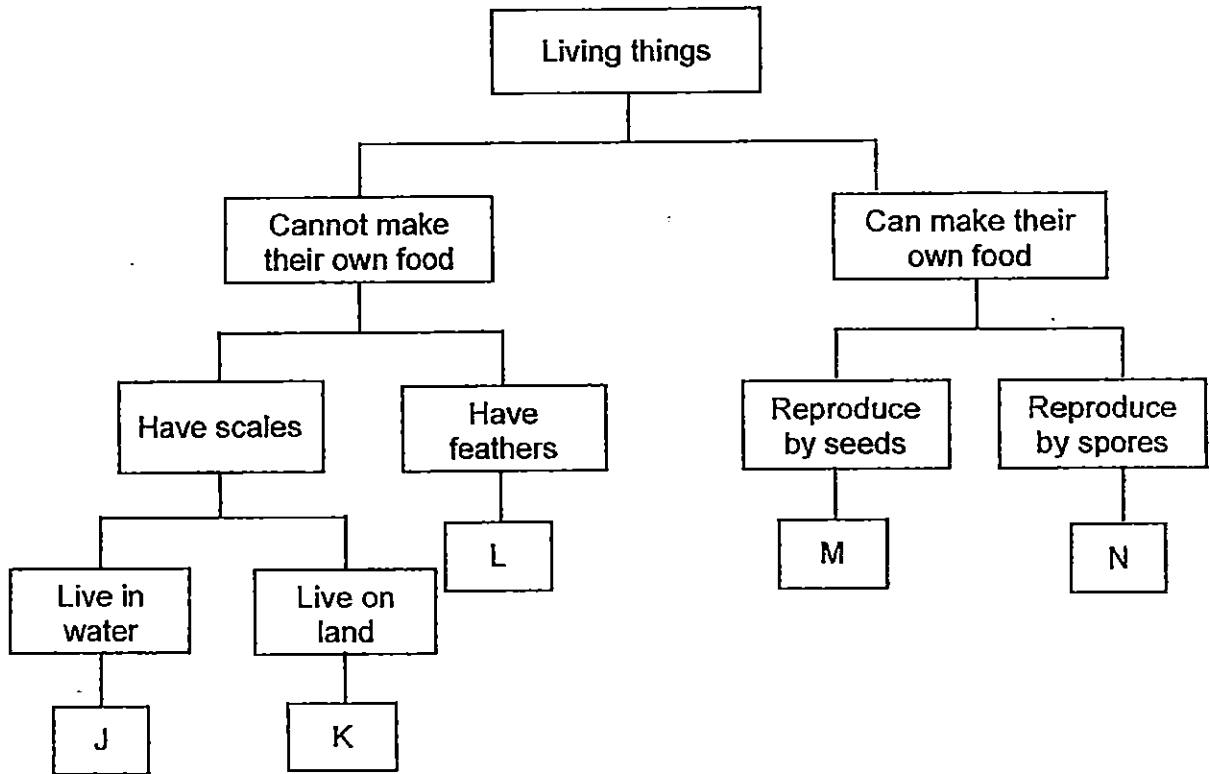
(a) Paul used the table below to group the animals according to how they move from place to place. Write the correct letters P, Q, R and S in the classification table below. (1m)

Animals	
Group A	Group B

(b) Paul was told that he could also group the animals according to how they reproduce. Write the correct letters P, Q, R and S in the classification table below. (1m)

Animals	
Group A	Group B

24. Study the chart below.

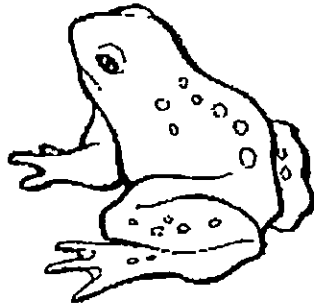


(a) State the characteristics of living thing N. (1m)

(b) State one similarity between living things J and L. (1m)

Question 24 continues on page 5

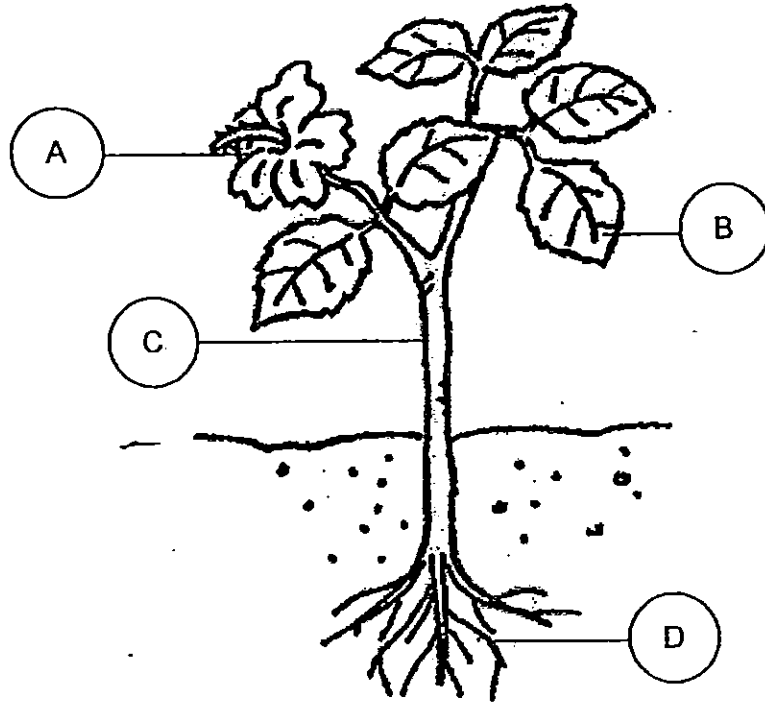
John studied about living thing P as shown below.



Living thing P

- (c) He stated that it could be in the same group as living thing J. Do you agree? Explain why. (1m)

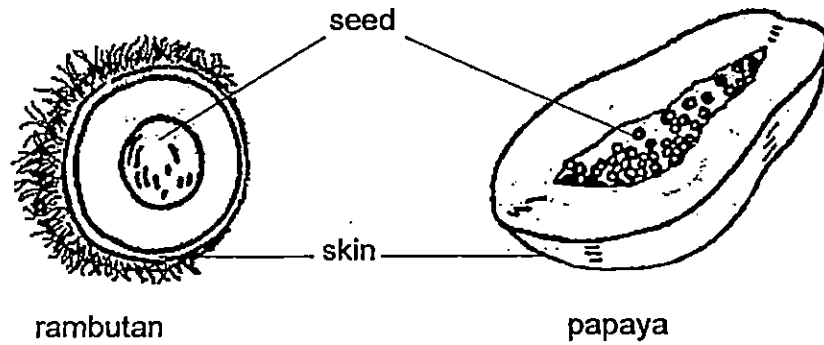
25. Name the labelled parts of the plant in the boxes provided.



A: _____
B: _____
C: _____
D: _____

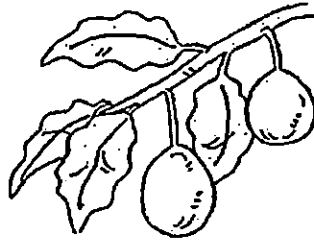
(2m)

26. Jenny observed two cut fruits as shown below.



(a) Based on your observation of the diagram above, state a difference between the two fruits. (Do not compare their size and shape.) (1m)

Jenny spotted a plant that bears fruits that she had never seen before. She sketched part of the plant as shown below.



(b) Based on her drawing, fill in the blanks with 'True' or 'False'. (1m)

(i) It is a flowering plant. _____

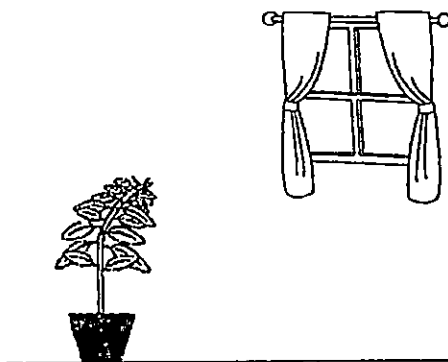
(ii) The plant reproduces through spores. _____

27. Priscilla observed the growth of four plants A, B, C and D under different conditions. The conditions are as shown below.

Plants	Conditions		
	Presence of Air	Presence of Water	Presence of Sunlight
A	Yes	Yes	Yes
B	Yes	Yes	No
C	No	Yes	Yes
D	No	No	No

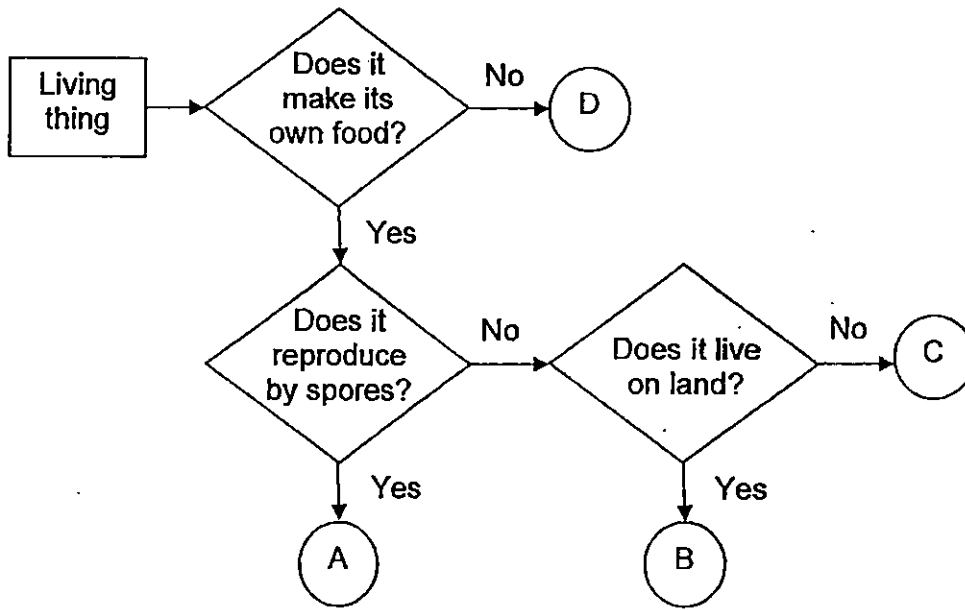
- (a) Which plant would survive the longest? (1m)

She noticed that one of the plants was growing as shown below.



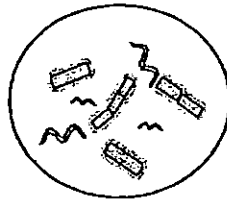
- (b) State the characteristic of living things observed in the diagram above. (1m)

28. The flow chart below shows how living things are classified.



(a) Based on the flow chart above, state a difference between Living things A and C. (1m)

(b) Dave saw some bacteria under a microscope as shown below.



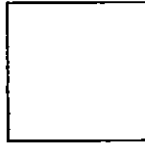
Bacteria

He said that it should be placed in B. Do you agree with him? Explain why. (1m)

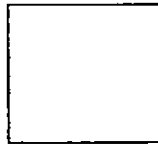
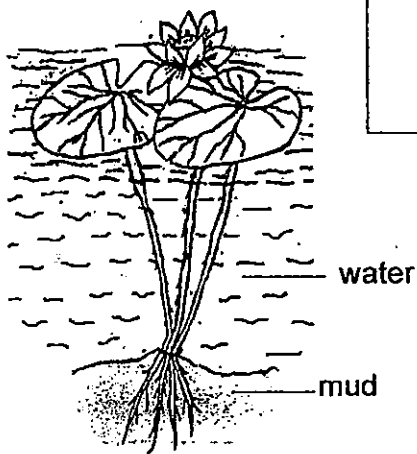
Question 28 continues on page 10

- (c) Based on the flow chart, which of the letters, A, B, C or D, best represents the following living things? Write A, B, C or D in each of the boxes provided. (2m)

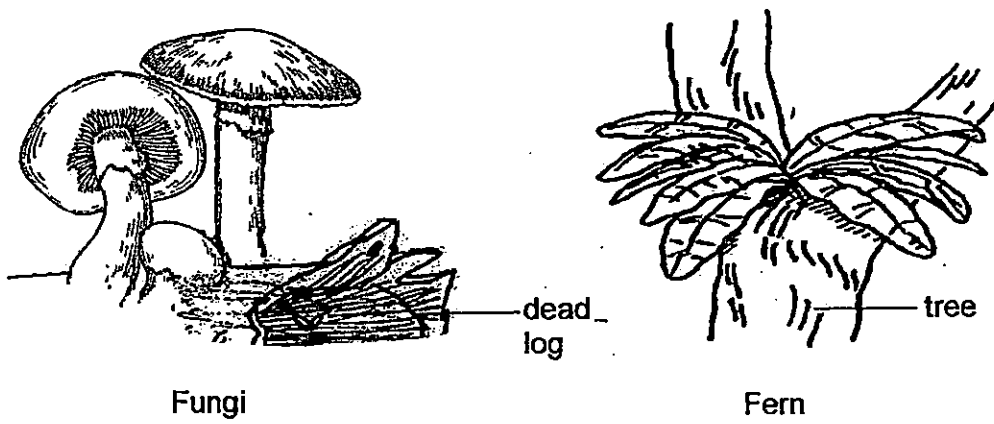
(i)



(ii)



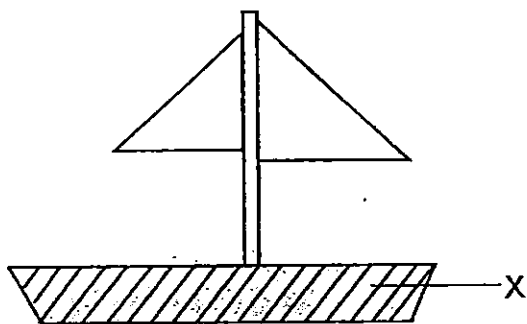
29. Refer to the diagrams below.



(a) How do the fungi and fern in the diagrams above get their food? (2m)

(b) How do fungi and ferns reproduce? (1m)

30. Study the diagram below.

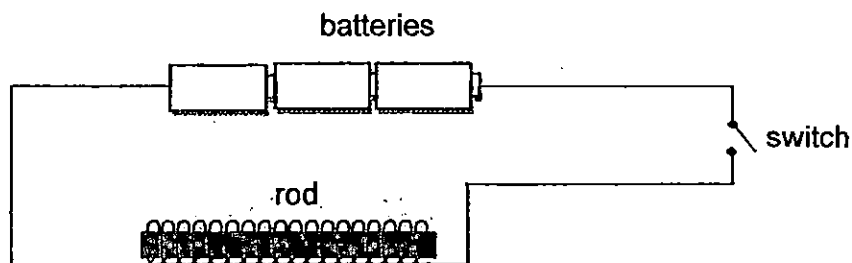


- (a) The diagram above shows a toy sailboat made of cardboard. It is able to float on water at the start but sinks after a while. Explain why. (1m)

- (b) Suggest a suitable material for 'X' so that the toy sailboat can stay afloat on water. (1m)

Material: _____

31. Afiq tried to magnetise 3 rods, J, K and L, as shown below. He used three new batteries, a switch, a wire and three rods of different materials. The three rods were of the same size and shape. The number of coils used to magnetise each rod is also the same.



After the three rods had been magnetised, he conducted an experiment to test their strength by placing some paper clips near one end of each of the electromagnet as shown below.



He recorded the results in a table as shown below.

Electromagnet	J	K	L
Number of paper clips attracted to the electromagnet	0	10	0

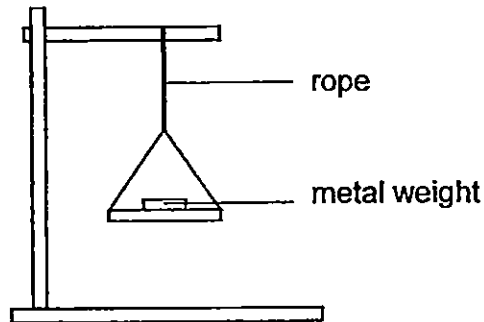
- (a) Based on the table above, the number of paper clips attracted to the Electromagnets J and L was zero. Explain why. (1m)

- (b) Suggest what Afiq could do to Electromagnet K if he wanted to attract more than ten paper clips. (1m)

Question 31 continues on page 14

- (c) Afiq dropped Electromagnet K onto the floor a number of times. He then used it to attract the paper clips. What do you think Afiq would observe? (1m)

32. Tiara set up an experiment to test the strength of 3 ropes, E, F and G, as shown below.



The table below shows the number of weights that each rope could hold before it broke.

Rope	Number of weights
E	10
F	25
G	20

- (a) Which rope, E, F or G, is the strongest? Explain your choice. (2m)

- (b) Arrange the ropes, E, F and G, according to their strength starting from the weakest to the strongest. (1m)

, ,
 weakest

End of Paper



LEVEL : PRIMARY 3
SCHOOL : ROSYTH SCHOOL
SUBJECT : SCIENCE
TERM : SA1

Q1	Q2	Q3	Q4	Q5	Q6	Q7	Q8	Q9	Q10
3	2	2	3	2	2	2	1	4	1
Q11	Q12	Q13	Q14	Q15	Q16	Q17	Q18	Q19	Q20
2	3	2	1	4	3	1	1	2	4

Q21a. Difference 1: Item A can grow but item B cannot.

Q21a. Difference 2: Item A can reproduce but item B cannot.

Q21b. **SEE PICTURE** (next page)

Q22a. The number of guppies in the tank got larger.

Q22b. All living things reproduce Q23a. **SEE PICTURE** (next page)

Q23b. **SEE PICTURE** (next page)

Q24a. Living thing N can make their own food and it reproduces by spores .

Q24b. Both of them cannot make their own food.

Q24c. I don't agree because living thing P does not have scales and living things J has scales.

Q25. A : flower B: leaves C: Stem D:root

Q26a. The rambutan has rough skin but the papaya has smooth skin.

Q26b. (i) TRUE Q26b(ii) FALSE Q27a. Plant A will survive the longest

Q27b. Living things respond to changes.

Q28a. Living thing A reproduces by spores but living thing C does not reproduce by spores.

Q28b. I do not agree with Dave because Bacteria cannot make its own food.

Q28c. (i) B Q28c (ii) C

Q29a. Fungi feeds on the living things that its growing on while the fern makes its own food.

Q29b. Both of them reproduce by spores.

Q30a. It sank because the cardboard absorbed the water and the ship got heavier, so it sank.

Q30b. Plastic Q31a. Because Electromagnet J and L were not a magnetic material.

Q31b. If Afiq want more paper clips , he could add more batteries to the electromagnet.

Q31c. Electromagnet K will attract less or probably even no paper clips.

Q32a. Rope F is the strongest as it managed to hold the most number of weights before it broke.

Q32b B (weakest) , G , F

21.b.

Item	Does it move on its own?	Does it grow?	Does it reproduce?
A	Yes	Yes	Yes
B	Yes	No	No
C	<input type="text" value="YES"/>	<input type="text" value="YES"/>	<input type="text" value="YES"/>

23 .

Animals	
Group A	Group B
P , S	Q , R

(b) Paul was told that he could also group the animals according to how they reproduce. Write the correct letters P, Q, R and S in the classification table below. (1m)

Animals	
Group A	Group B
R,P,S	Q