



# RAFFLES' GIRLS PRIMARY SCHOOL

## SEMESTRAL ASSESSMENT ( 2 ) 2006

Your Score out of 80 marks		
	Class	Level
Highest score		
Average score		
Parent's signature		

Name: \_\_\_\_\_ ( ) Class: P 3

31 October 2006 SCIENCE Att: 1h 30min

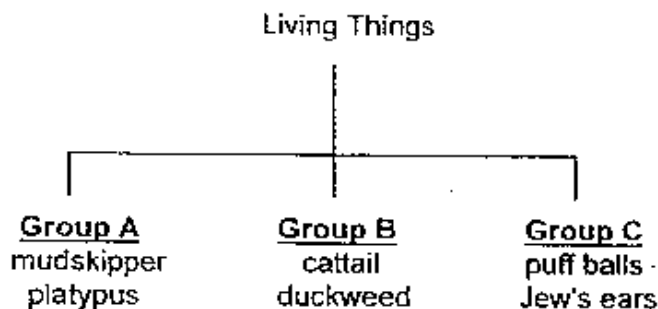
### SECTION A: Multiple Choice (24 X 2 marks)

There are 24 questions in this section. Answer all of them. For each question, 4 suggested answers are given. Choose the most suitable answer and shade the correct oval on the Optical Answer Sheet (OAS).

1. Which one of the following sentences about living things is NOT correct?

- (1) Living things move from place to place.
- (2) Some living things die but some do not.
- (3) Living things need air, food and water to grow.
- (4) Living things respond to changes around them.

2. The classification table below shows how some living things are grouped.

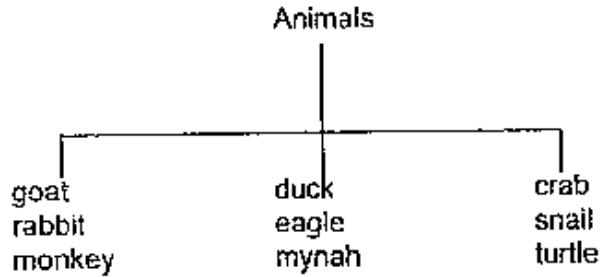


Which one of the following shows the correct heading for each group?

	Group A	Group B	Group C
(1)	Fungi	Plants	Micro-organisms
(2)	Micro-organisms	Animals	Fungi
(3)	Plants	Fungi	Animals
(4)	Animals	Plants	Fungi

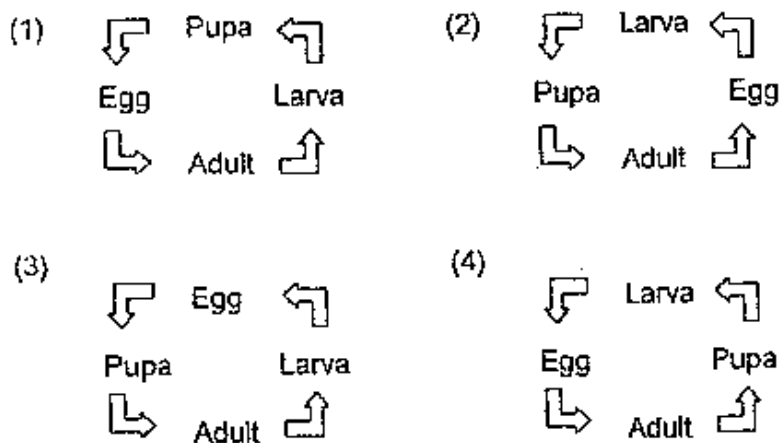
11  
11  
22

3. The classification table below shows how some animals are grouped.



These animals are classified according to \_\_\_\_\_.

- (1) what they eat  
 (2) where they live  
 (3) the way they move  
 (4) their outer coverings
4. The cheetah, the deer and the monkey are animals that live in the forest.  
 All of them \_\_\_\_\_.
- A. are plant eaters  
 B. are animal eaters  
 C. give birth to their young  
 D. have hair on their bodies
- (1) A and C only  
 (2) B and C only  
 (3) B and D only  
 (4) C and D only
5. Which one of the following shows the correct order of the stages in the life cycle of a butterfly?



6. The pictures below show the young of a butterfly and cockroach.



young of butterfly



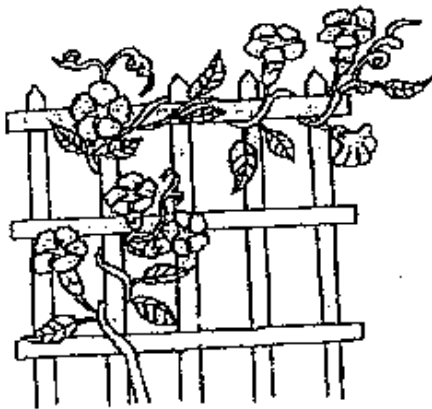
young of cockroach

Based on what you can see in the pictures, which of the following is/ are true about both the young of the butterfly and cockroach?

- A. Both have legs.
- B. Both are wingless.
- C. Both look like their parents.

- (1) C only
- (2) A and B only
- (3) B and C only
- (4) A, B and C

7. The diagram below shows a plant growing in a garden.

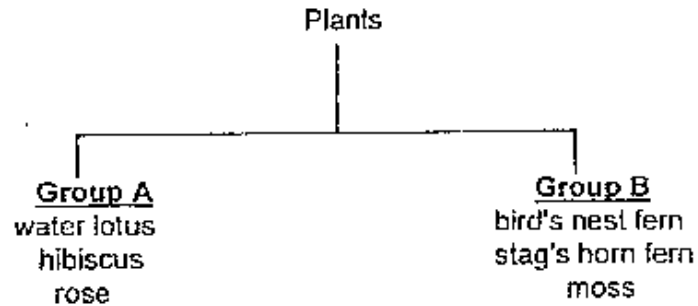


Which of the following statements is/ are correct?

- A. This plant has a weak stem.
- B. This plant is a flowering plant.
- C. This plant reproduces by spores.

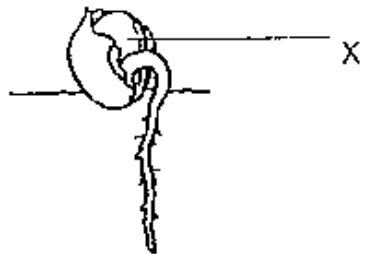
- (1) B only
- (2) C only
- (3) A and B only
- (4) B and C only

8. The classification table below shows how some plants are grouped.



The plants in Group A and Group B are classified according to whether they are \_\_\_\_\_.

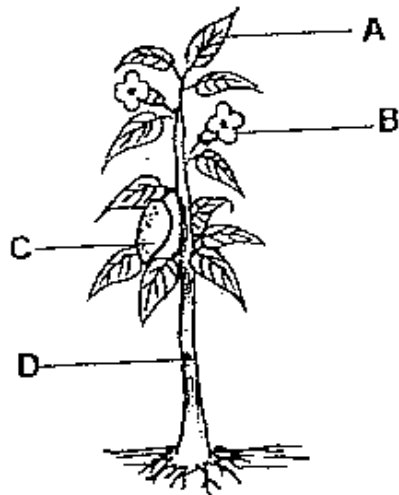
- (1) land or water plants
  - (2) green or non-green plants
  - (3) flowering or non-flowering plants
  - (4) floating or half-submerged water plants
9. The diagram below shows a seedling which was grown in soil.



Part X \_\_\_\_\_.

- (1) absorbs water
- (2) absorbs mineral salts
- (3) carries out photosynthesis
- (4) provides food for the seedling

10. The diagram below shows parts of a plant.



Which one of the following statements about parts, A, B, C and D, is correct?

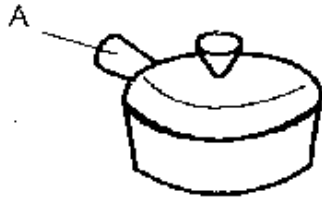
- (1) Part A develops into a fruit.
- (2) Part B makes food for the plant.
- (3) Part C contains and protects the seeds.
- (4) Part D holds the plant firmly in the ground.

11. Which of the following statements about micro-organisms is/ are true?

- Bacteria*
- A. ~~Bread mould~~ is a micro-organism.
  - B. Micro-organisms are living things.
  - C. Some micro-organisms are harmful.

- (1) A only
- (2) C only
- (3) A and B only
- (4) A, B and C

12. Anu used the pot below to cook soup.

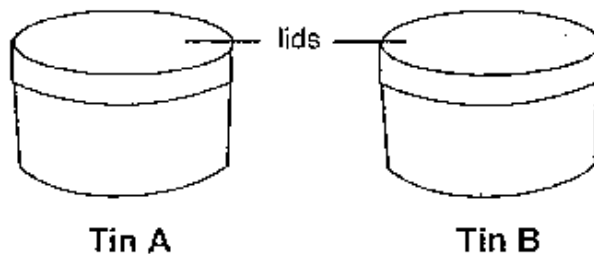


Which one of the following shows the characteristic of 'A' which makes it a suitable material for making the handle of the pot?

- (1) It is flexible.
  - (2) It breaks easily.
  - (3) It can float in water.
  - (4) It does not get hot easily.
13. Which one of the following is **NOT** a sense organ?

- (1) eye
- (2) skin
- (3) nose
- (4) heart

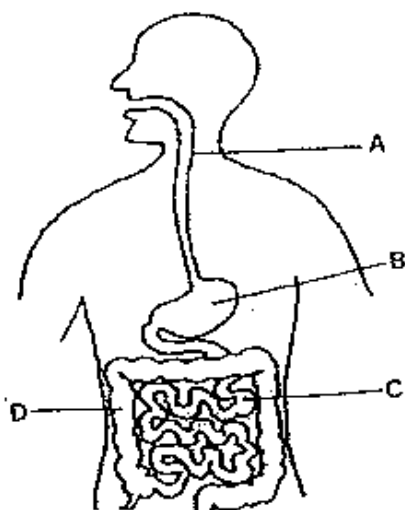
14. John's teacher gave him two identical metal tins, A and B. One tin was half-filled with cotton wool and the other was half-filled with marbles.



John's teacher wanted him to find out which tin contained the marbles without opening the lids of the tins. Which one of the following senses will help him to do so?

- (1) sight
- (2) taste
- (3) smell
- (4) hearing

The diagram below shows parts of the human digestive system. Use it to answer **Questions 15 and 16**.



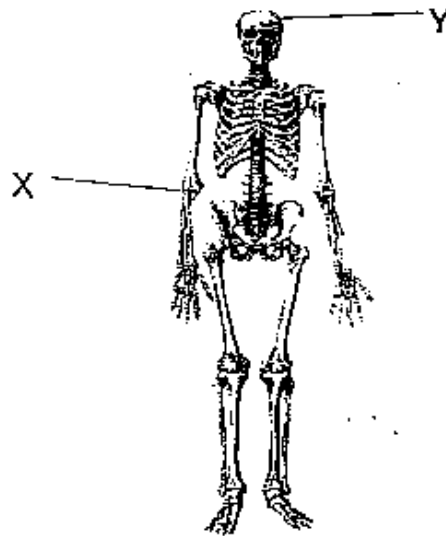
15. Which one of the following shows the correct names for parts A, B, C and D?

	A	B	C	D
(1)	large intestine	small intestine	gullet	stomach
(2)	stomach	gullet	large intestine	small intestine
(3)	gullet	stomach	small intestine	large intestine
(4)	small intestine	large intestine	stomach	gullet

16. Most of the water from undigested food is removed in \_\_\_\_\_.

- (1) A
- (2) B
- (3) C
- (4) D

The diagram below shows the skeleton of a human body. Use it to answer Questions 17 and 18.



17. Which of the following statements about Joint X is correct?

- A. It is a hinge joint.
- B. It is a ball and socket joint.
- C. It allows movement in all directions.
- D. It allows movement in one direction.

- (1) A and C only
- (2) A and D only
- (3) B and C only
- (4) B and D only

18. Part Y protects our \_\_\_\_\_.

- A. brain
- B. lungs
- C. heart

- (1) A only
- (2) A and B only
- (3) B and C only
- (4) A, B, and C



19. The baby is moving around in a walker as shown below.

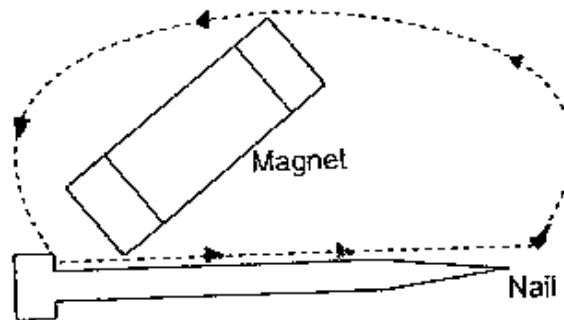


Which of the following help the baby to move around?

- A. joints
- B. bones
- C. muscles

- (1) A only
- (2) A and B only
- (3) B and C only
- (4) A, B and C

20. Tom stroked an iron nail with a magnet as shown below.



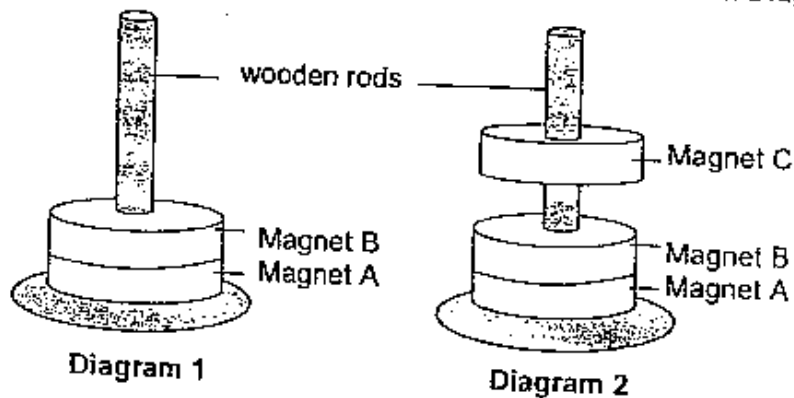
After repeated stroking, the nail was able to attract some pins.  
Which one of the following statements is **TRUE**?

- (1) The iron nail is magnetised.
- (2) The nail is most likely to be made of copper.
- (3) The more times the iron nail was stroked, the less pins it could attract.
- (4) The magnet lost its magnetism when it was used to stroke the iron nail.

21. John was given a bar Magnet Z wrapped in paper. Which of the following could enable him to find out which is the N-pole of Magnet Z?
- Use the S-pole of another magnet to attract the N-pole of Magnet Z.
  - Try to attract as many paper clips as possible to both ends of the magnet. The end which attracts more paper clips is the N-pole.
  - Tape Magnet Z to a piece of styrofoam floating on water and let it come to a north-south resting position. Then use a compass to tell which end the N-pole is.

- A only
- B only
- A and C only
- A, B and C

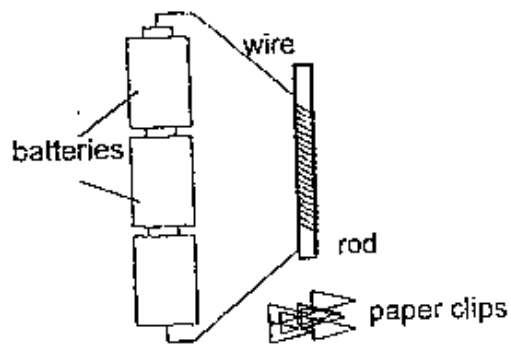
22. Magnets A, B and C are ring magnets. Magnet B is placed through a rod and rests on top of magnet A as shown in Diagram 1. When Magnet C is placed through the rod, it seems to float above Magnet B as shown in Diagram 2.



Why does Magnet C float above Magnet B in Diagram 2?

- Like poles of Magnets A and C are facing each other.
- Unlike poles of Magnets A and C are facing each other.
- Like poles of Magnets B and C are facing each other.
- Unlike poles of Magnets B and C are facing each other.

23. Peter made an electromagnet using the set-up shown below.



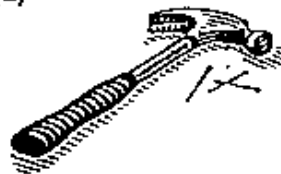
He found that the rod in the set-up could **NOT** attract any of the paper clips.  
Which of the following could be an explanation for his observation?

- (1) The rod is made of steel.
  - (2) The rod is made of aluminium.
  - (3) The paper clips are made of steel.
  - (4) There are too many coils of wire around the rod.
24. Which one of the following makes use of magnets to work?

(1)



(2)



(3)



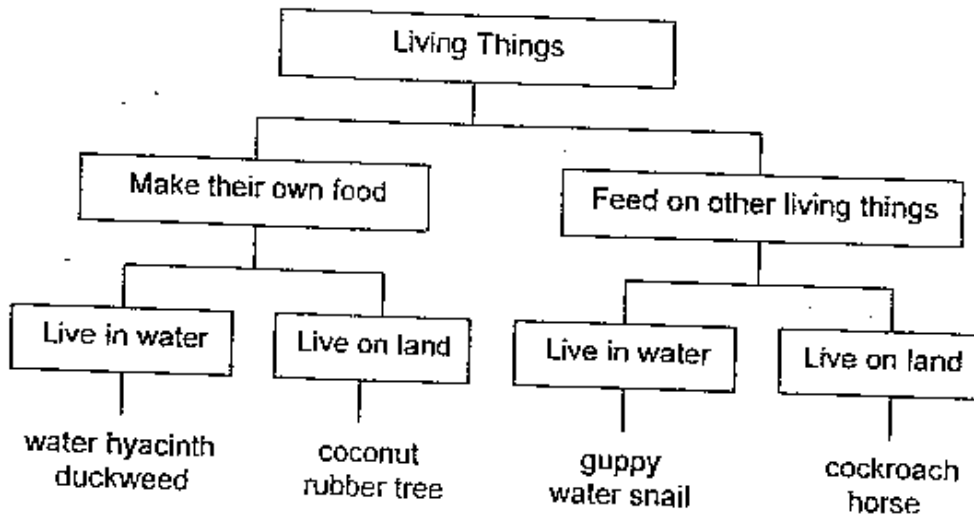
(4)



**SECTION B: Open-ended questions (16 X 2 marks)**

There are 16 questions in this section. Answer all of them.  
Write your answers in the space provided.

25. Some living things are grouped in a classification table shown below.



(a) How is a water snail similar to a cockroach? (1 m)

\_\_\_\_\_

(b) How is a rubber tree different from a horse? (1 m)

\_\_\_\_\_

26. Animals move for various reasons. Match each of the animal movements to its correct purpose by joining the correct dots with lines. (2 m)

Animal Movements

A tiger chases a zebra.

A mouse runs away from a cat.

A lion moves towards a shady tree on a hot day.

A hungry monkey climbs a fruit tree.

Purposes

to look for shelter

to hunt for food

to look for food

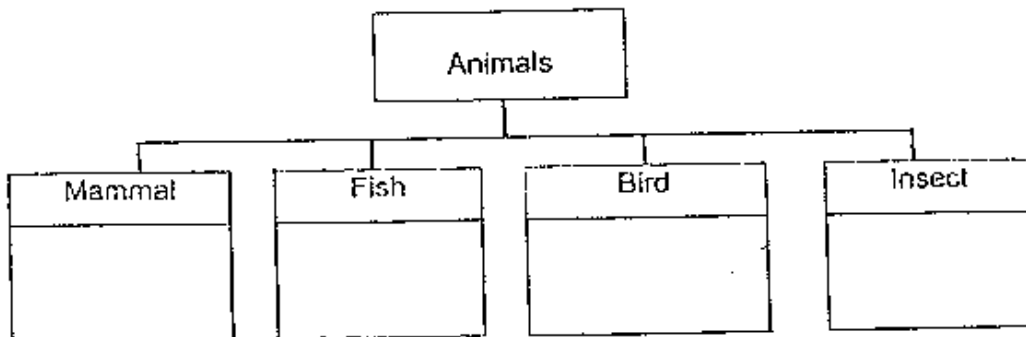
to escape danger

27. The following table gives information on two animals, X and Y, based on their characteristics. A tick (✓) shows that the animal has the characteristic.

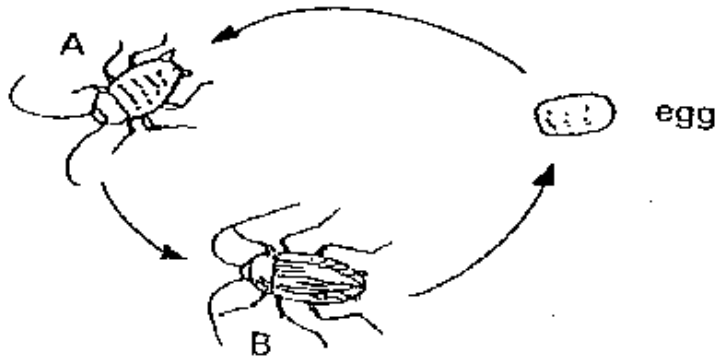
Characteristic	Animals	
	X	Y
Lays eggs	✓	
Gives birth to its young		✓
Has a hairy outer covering		✓
Has feathers	✓	
Has six legs		

From the information above, where do animals X and Y belong in the classification table below?

Write only letters, X or Y, in the boxes provided. (2 m)



28. The diagram below shows the life cycle of a cockroach.



(a) Name the stages, A and B. (1 m)

Stage A	
Stage B	

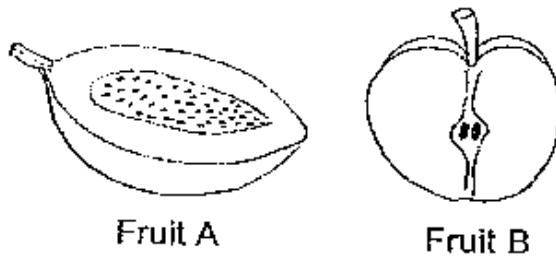
(b) As the animal develops from Stage A to Stage B, some changes can be seen. State **ONE** of its changes. (1 m)

---



---

29. Fruits A and B have been cut as shown below.



Based on what you can see in the pictures above, write down one similarity and one difference between the two fruits. (2 m)  
 (Do not compare their size and shape.)

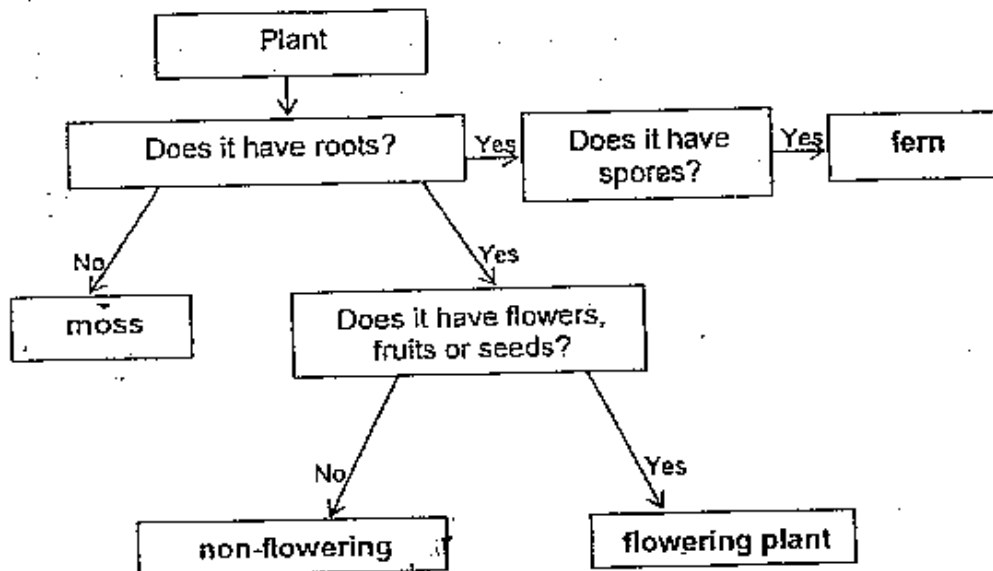
Similarity	
Difference	

3/4

30. Calvin found the plant shown below.



The chart below shows one way to sort plants.



- (a) Based on the chart above, what was the type of plant that Calvin found likely to be? (1 m)

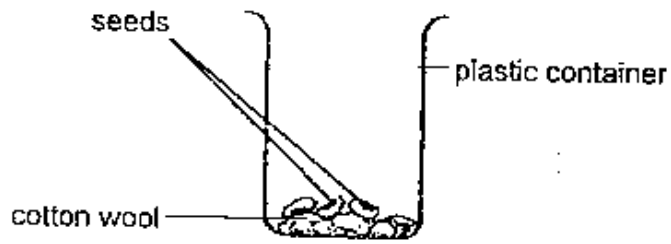
---

- (b) If Calvin found another plant which had roots and reproduced by spores, which type of plant would it be? (1 m)

---

2/5

31. Ali grew some seeds on some cotton wool in a plastic container as shown below.



The container was placed in a dark cupboard for a few days.

- (a) Ali observed that no roots appeared at all after a few days. Explain why no roots appeared. (1 m)

---

---

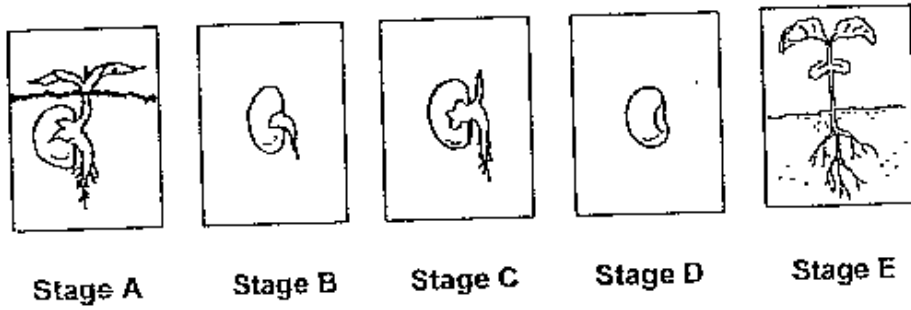
- (b) Write down the conditions needed for the seeds to germinate. (1 m)

---

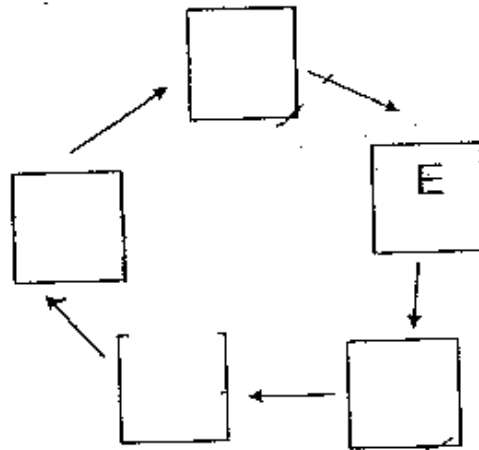
---



32. The pictures below show the different stages of growth of a bean plant.



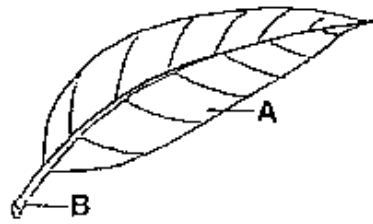
(a) Arrange the stages to show the correct order of growth by writing the letters, A, B, C and D, in the boxes below. Stage E has been done for you. (1 m)



(b) At which stage, A, B, C, D or E, does the bean plant start to make its own food? (1 m)

\_\_\_\_\_

33. The diagram below shows a leaf.



- (a) Name parts, A and B. (1 m)

A	leaf _____
B	leaf _____

- (b) A green substance, which traps light energy, is found in A. Name the substance. (1 m)
- 

34. Mark wanted to carry some wet clothing home after his swimming lesson. The diagrams below show two types of bags.



plastic bag



paper bag

- (a) Which bag should Mark use? (1 m)

---

- (b) Give a reason for your answer in (a). (1 m)

---

---

35. During a music lesson, each pupil has to learn to play a recorder.

(a) Name **TWO** sense organs that are used by the pupils during the lesson. (1 m)

\_\_\_\_\_

(b) Choose **ONE** sense organ you mentioned in (a) and explain how it is used by each pupil to play a recorder. (1 m)

\_\_\_\_\_

\_\_\_\_\_

36. Name the body systems that match the functions shown in the table below. (2 m)

Functions	Body system
(a) supports the body	
(b) takes oxygen into the body	
(c) removes waste materials from the body	
(d) breaks down food into simpler substances	

37. The diagram below shows Muthu climbing up a cliff.

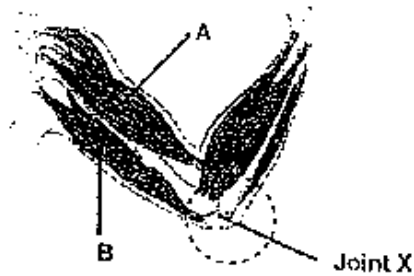


Muthu used his shoulder and neck joints to help him climb up the cliff.  
What **OTHER TWO** joints did Muthu use? (2 m)

(a) \_\_\_\_\_

(b) \_\_\_\_\_

38. Study the diagram below and fill in the blanks.

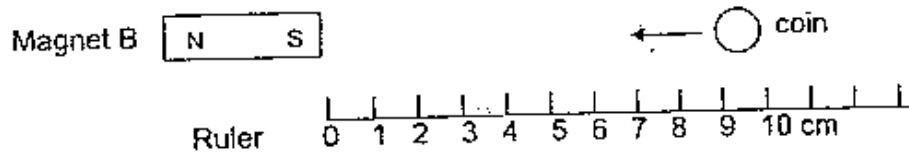
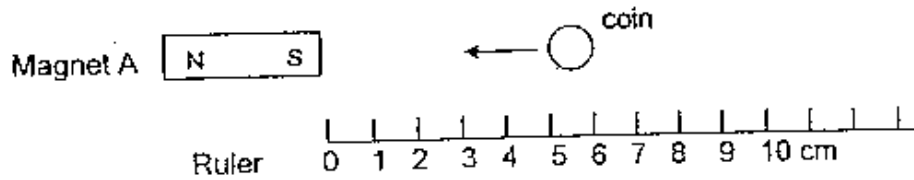


(a) In order for the arm to bend, Muscle A must \_\_\_\_\_ while  
Muscle B must \_\_\_\_\_. (1 m)

(b) Name **ANOTHER** part of the body with a joint similar to Joint X. (1 m)

\_\_\_\_\_

39. Ali was given two magnets, a ruler and a nickel coin. He discovered that Magnet A was able to attract the coin when it was 5 cm away while Magnet B could attract the same coin from as far as 9 cm away.



- (a) Which magnet, A or B, is stronger? (1 m)

---

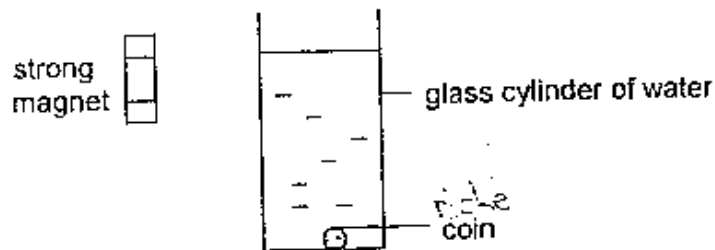
- (b) Give a reason for your answer in (a). (1 m)

---



---

40. Ali saw a coin in a glass cylinder of water as shown in the diagram below.



Describe how he would use a magnet alone to get the coin without pouring the water out or putting his hand(s) into the cylinder. (2 m)

---



---



---

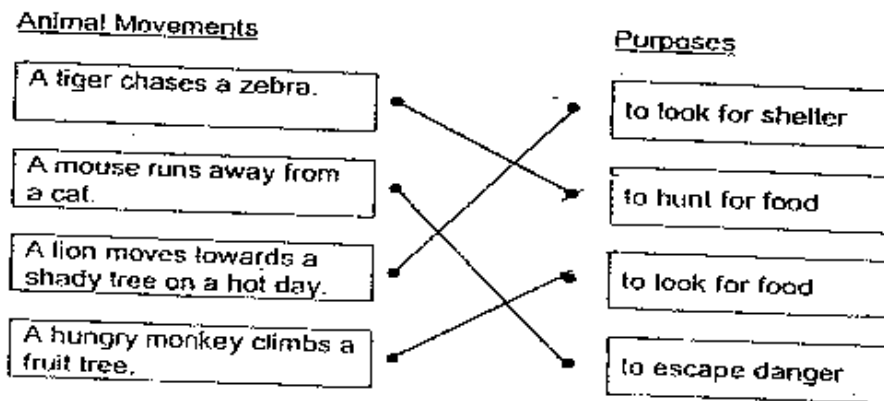
- END OF PAPER -

**Answer Sheets**  
***Raffles Girls Pri 3 SA2 / 2006 Science***

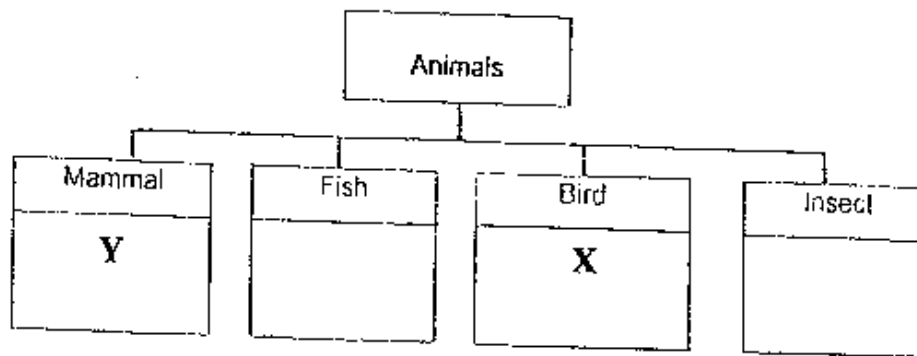
- |       |       |       |       |       |
|-------|-------|-------|-------|-------|
| 1) 2  | 2) 4  | 3) 4  | 4) 4  | 5) 2  |
| 6) 2  | 7) 3  | 8) 3  | 9) 4  | 10) 3 |
| 11) 4 | 12) 4 | 13) 4 | 14) 4 | 15) 3 |
| 16)   | 17)   | 18)   | 19)   | 20)   |
| 21) 3 | 22) 3 | 23) 1 | 24) 4 |       |

- Q25a. Both feed on other living things.  
 b. Rubber tree can make their own food and the horse feed on other living things.

Q26



Q27.



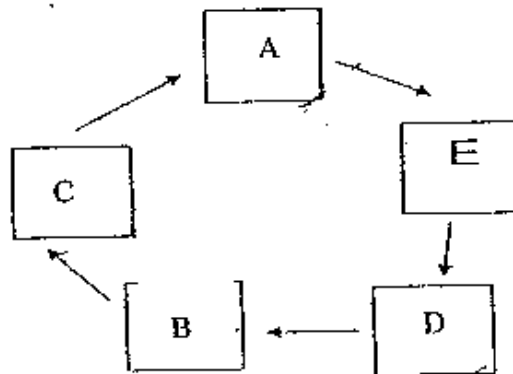
- Q28a. Stage A : Nymph  
 Stage B : Adult  
 b. The wings will grow.

- Q29. Similarity : Both are edible fruits.  
 Different : Fruit A has many seeds and Fruit B has few seeds.

- Q30a. It is a tomato plant.  
 b. It is a fern plant.

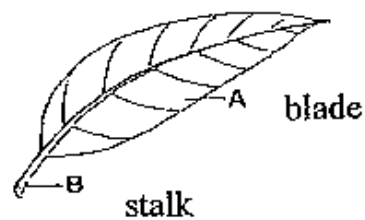
- Q31a. The seeds need air, warmth and water. Its need water.  
 b. Air, warmth and water.

Q32a.



- b. Stage A the bean plant start to make its own food.

Q33a.



- b. Chlorophyll

- Q34a. Mark should sue Plastic bag.  
 B. Because it is waterproof , it will not break easily.

- Q35a. Sense of sight and hearing.  
b. Our sense of sight allows us to recognize and learn the notes to play the recorder.

Q36.

Functions	Body system
(a) supports the body	Skeletal system
(b) takes oxygen into the body	Respiratory system
(c) removes waste materials from the body	Circulatory system
(d) breaks down food into simpler substances	Digestive system

- Q37a. Knee joint  
b. Elbow joint
- Q38a. In order for the arm to bend, Muscle A must Be **contract** while Muscle B must **relax**.  
b. Knee joint
- Q39a. Magnet B is the stronger.  
b. If the coin is able to attract to the magnet from far away, the magnet is very strong.
- Q40. Place the strong magnet near the nickel coin outside the cylinder. The nickel coins is picked up using the strong magnet, slowly move up the nickel coin to the brim of the cylinder.