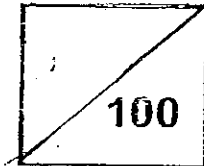




Rosyth School
Second Semestral Assessment for 2008
SCIENCE
Primary 3

Name: _____

Total
Marks:



Class: Pr _____ Register No. _____ Duration: 1 h 30 min

Date: 29th October 2008 Parent's Signature: _____

Instructions to Pupils:

1. Do not open the booklets until you are told to do so.
2. Follow all instructions carefully.
3. This paper consists of 2 booklets, Booklet A and Booklet B.
4. For questions 1 to 30 in Booklet A, shade the correct ovals on the Optical Answer Sheet (OAS) provided using a 2B pencil.
5. For questions 31 to 46, write your answers in the spaces given in the Booklet B.

	Maximum	Marks Obtained
Booklet A	60 marks	
Booklet B	40 marks	
Total	100 marks	

* This booklet consists of 17 pages.

This paper is not to be reproduced in part or whole without the permission of the Principal.

Part I (60 MARKS)

For each question from 1 to 30, four options are given. One of them is the correct answer. Make your choice (1, 2, 3 or 4). **Shade the correct oval (1, 2, 3 or 4) on the Optical Answer Sheet.**

1. Which of the following need(s) air, water and food to stay alive?

- A : cat
- B : table
- C : clouds
- D : mango tree

- (1) A only
- (2) C only
- (3) B and C only
- (4) A and D only

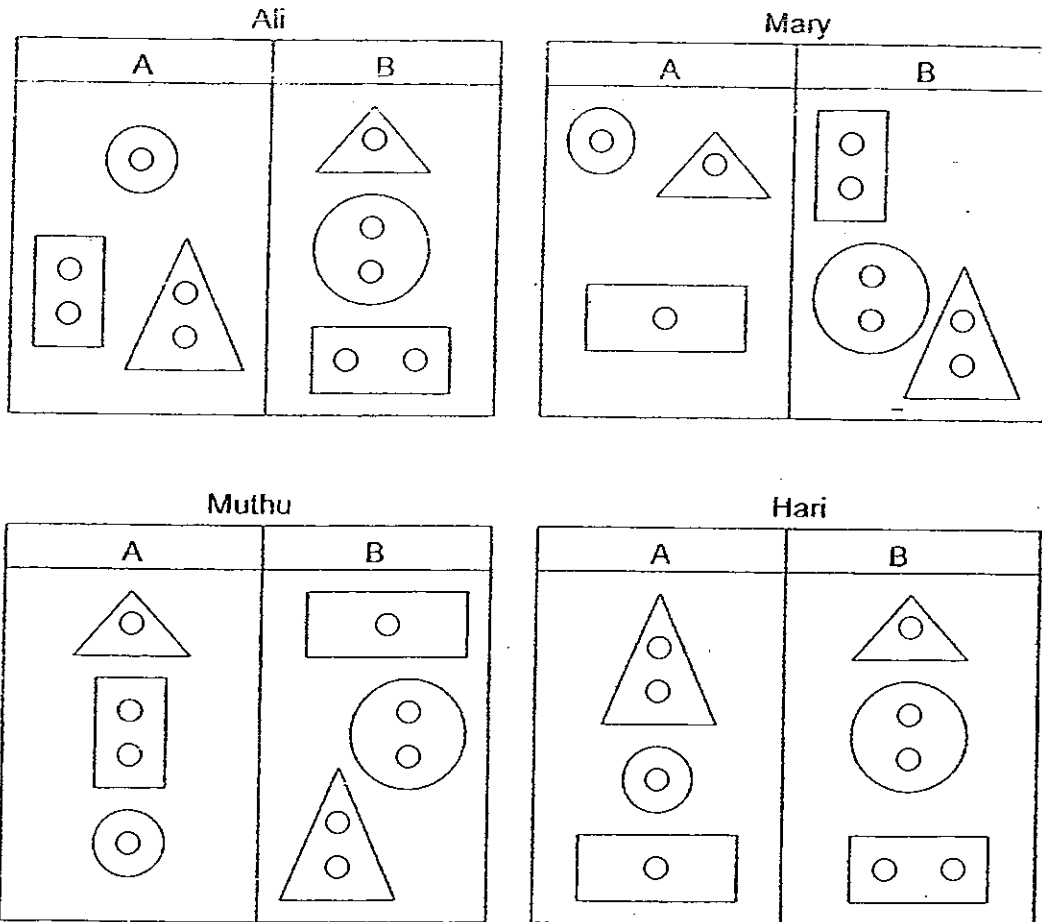
2. A, B, C and D represent four different places. The types of living things and the number of living things were recorded in the table as shown below.

Place	A	B	C	D
Types of living things	20	16	25	18
Number of living things	100	200	150	50

Which place has the greatest diversity of living things?

- (1) A
- (2) B
- (3) C
- (4) D

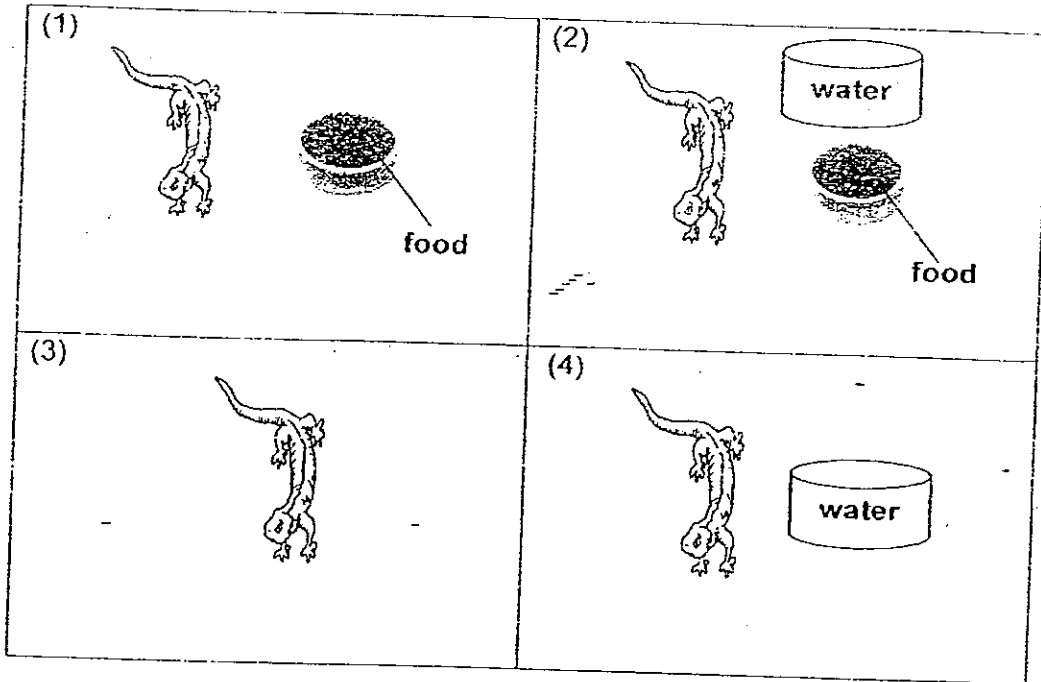
3. Four children classified some buttons in different ways as shown below.



Who has/have classified the buttons correctly?

- | | |
|-------------------------|-----------------------|
| (1) Ali only | (2) Muthu only |
| (3) Mary and Muthu only | (4) Ali and Hari only |

4. Study the four set-ups carefully. All the set-ups allow air to move in and out.



In which set-ups will the lizard survive the longest?

5. Four classmates stated an example each to show that living things can respond to changes.

Linda : My two fish have died.
Kelly : My seedling is growing.
Melvin : My dog has given birth to puppies.
Anthony : My hand moves away quickly when I touch the hot kettle.

Which one of the following classmates has given a correct example?

- (1) Linda
(2) Kelly
(3) Melvin
(4) Anthony

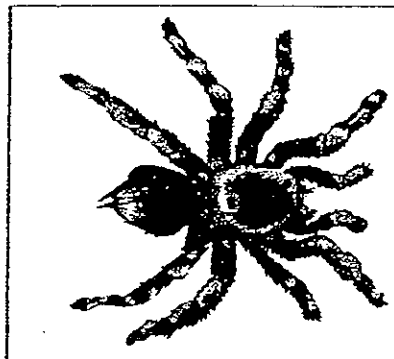
6. The classification table below shows how some plants are classified.

Plants			
Flowering		Non-flowering	
On land	In water	On land	In water
K	L	M	N

Which one of the following set of plants represents 'K', 'L', 'M' and 'N'?

	K	L	M	N
(1)	Orchid	Hydrilla	Water lily	Ixora
(2)	Water lily	Ladder fern	Ixora	Hydrilla
(3)	Ixora	Lotus	Water lily	Bird nest fern
(4)	Ixora	Water lily	Bird nest fern	Water moss fern

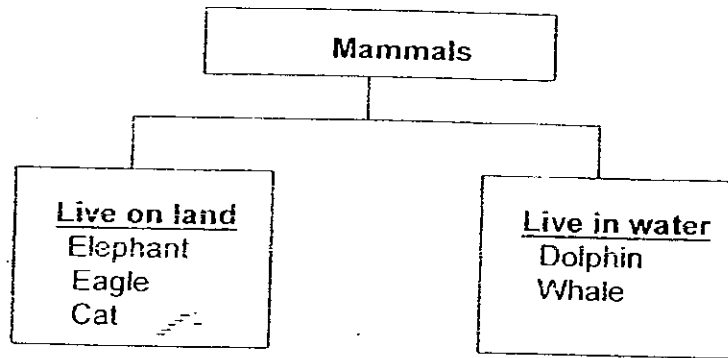
7. Why is the living thing shown below not classified as an insect?



- A : It eats insects.
- B : It has no wings.
- C : It has eight legs.
- D : It has two parts.

- (1) A and B only
- (2) C and D only
- (3) A, B and C only
- (4) A, B, C and D

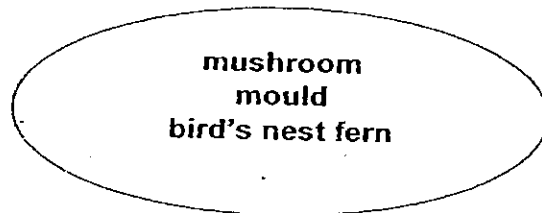
8. Study the classification diagram shown below.



Which animal is grouped wrongly?

- (1) Cat
- (2) Eagle
- (3) Whale
- (4) Elephant

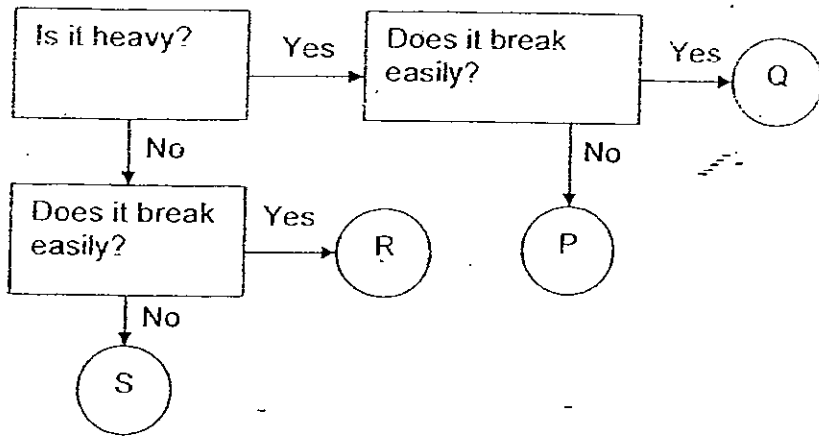
9. Richard grouped the following together.



What is the similarity of the group above?

- (1) They have spores.
- (2) They are microscopic.
- (3) They do not make food.
- (4) They belong to the fungi group.

10. Study the flowchart below.



Jia Yi classified P, Q, R and S based on the flowchart above.

Which of the following groupings for P, Q, R and S are correct?

A :

Break easily	Does not break easily
Q	P
R	S

B :

Light	Heavy
R	P
S	Q

C :

Break easily	Does not break easily
P	R
Q	S

D :

Light	Heavy
Q	P
S	R

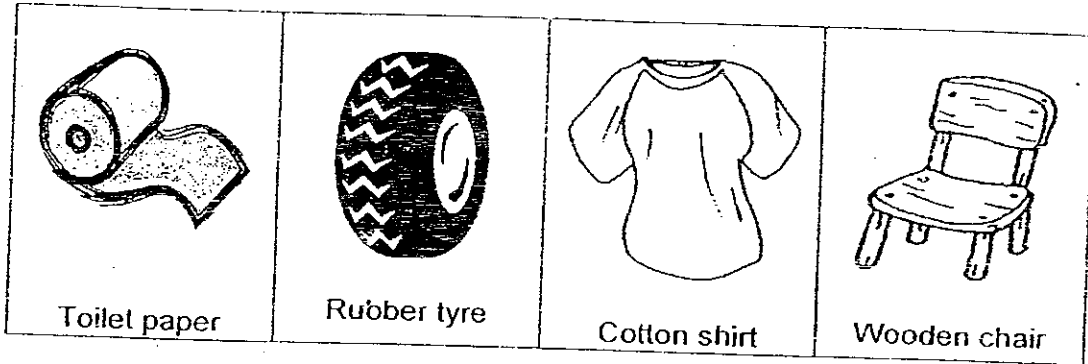
(1) A and B only

(3) A, B and C only

(2) C and D only

(4) A, B, C and D

11. What is/are the common property/properties of the objects below?



- A : They are stiff.
- B : They are flexible.
- C : They break easily.
- D : They are made from plants.

- (1) B only
- (2) D only
- (3) A and C only
- (4) B and D only

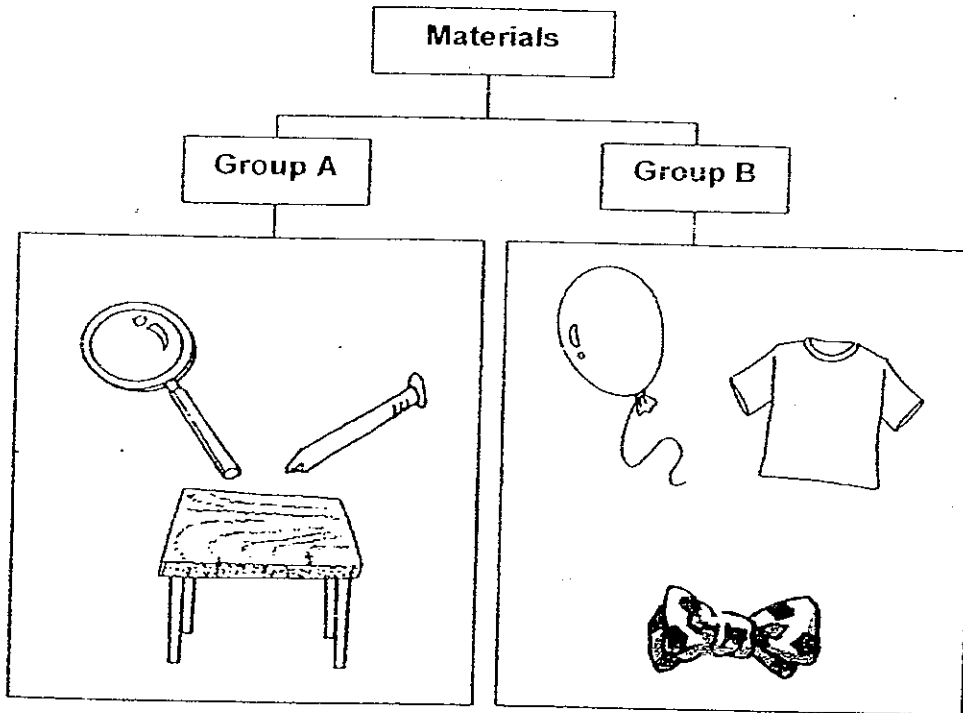
12. The table below shows four materials. Each tick (✓) indicates that the material has the property.

Property	Material			
	A	B	C	D
It can absorb water	✓	✓		
It is soft		✓		✓
It sinks in water	✓	✓	✓	

Which one of the material is most suitable for making a beach ball?

- (1) A
- (2) B
- (3) C
- (4) D

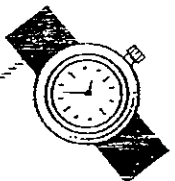

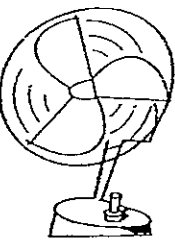
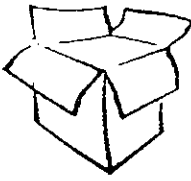



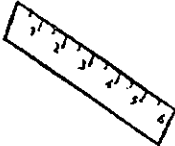
15. The classification table below shows how some objects are grouped into Groups A and B.



Which one of the following headings best describe the objects classified above?

	Group A	Group B
(1)	Not waterproof	Waterproof
(2)	Stiff	Flexible
(3)	Non-breakable	Breakable
(4)	Sink in water	Float in water

16. Look at the pictures below.
Which of the following correctly shows a system and a non-system?

	Systems	Non-systems
(1)		
(2)		
(3)		
(4)		

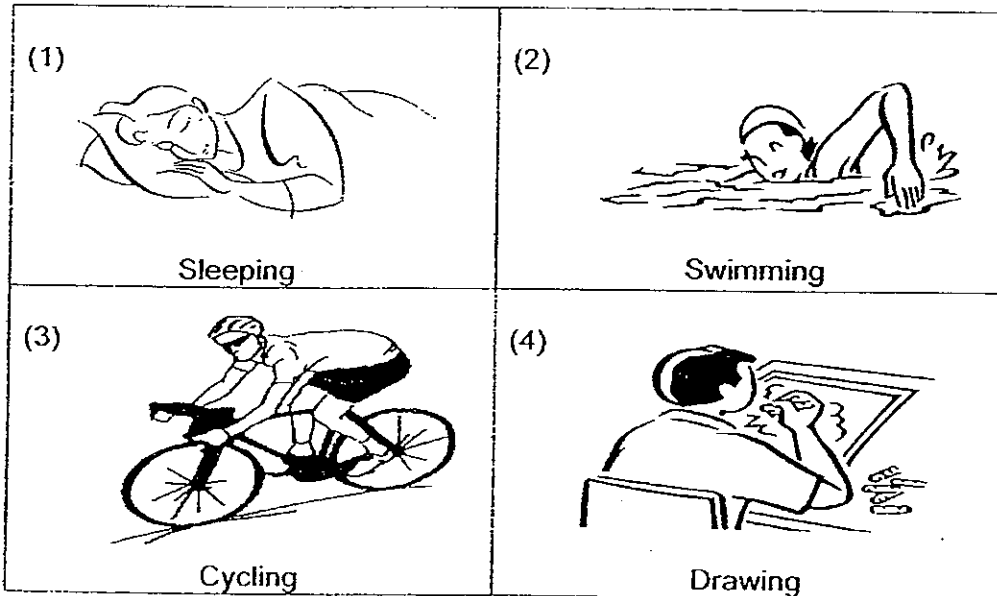
17. David read the following riddle.

I have parts in me.
 Without them, I am useless.
 I do not need air, food and water to live.
 Who am I?

Which one of the following could match the riddle?

- (1) rat
- (2) plant
- (3) paper
- (4) stapler

18. Look at the pictures below. Which one of the following activities below ^{requires} ~~makes~~ least use of the muscular system?



19. Which of the following describes what takes place when man breathes in and out?

	Breathe in	Breathe out
(1)	Takes oxygen into body	Removes oxygen from body
(2)	Takes carbon dioxide into body.	Removes carbon dioxide from body
(3)	Takes oxygen into body	Removes carbon dioxide from body
(4)	Takes carbon dioxide into body.	Removes oxygen from body

20. Four pupils each made a statement about the functions of various human body systems.

Andy: It supports the body.

Billy: It takes oxygen into the body.

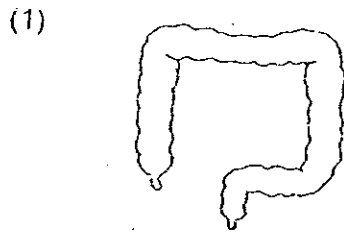
Connie: It protects the delicate organs in the body

Danny: It carries waste materials away from different parts of the body.

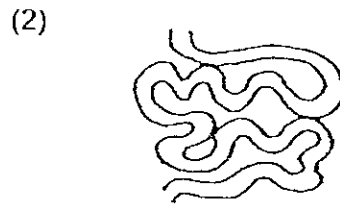
Which two pupils have made a comment about the same system?

- (1) Andy and Billy
 - (2) Andy and Connie
 - (3) Billy and Danny
 - (4) Connie and Danny
21. Which one of the following statements about the human digestive system is true?
- (1) The rectum absorbs water from the digested food.
 - (2) Solid waste is stored in the large intestine before it is passed out.
 - (3) Our tongue in the mouth chews and grinds food into smaller pieces.
 - (4) Digested food is passed into the bloodstream and carried to other parts of the body.
22. In which part of the digestive system does digestion begin?
- (1) mouth
 - (2) gullet
 - (3) stomach
 - (4) small intestine
23. In the digestive system, if the small intestine is removed, how would digestion be affected?
- A: The food will not be grinded.
B: The food will not be digested at all.
C: Digestion of food will not be completed.
- (1) A only
 - (2) C only
 - (3) A and B only
 - (4) B and C only

24. Refer to the four parts of the digestive system shown below.
In which part is most of the water being removed from the food?



large intestine



small intestine



gullet

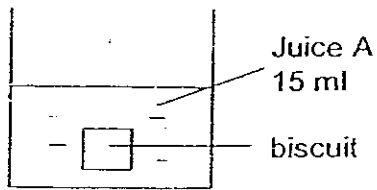


stomach

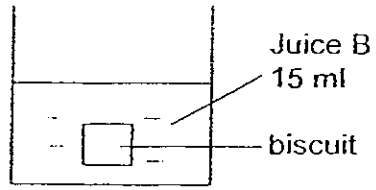
25. At which parts of the human digestive system are digestive juices added in for digestion to take place?

- (1) mouth, gullet and small intestine
- (2) gullet, stomach and small intestine
- (3) mouth, stomach and small intestine
- (4) mouth, small intestine and large intestine

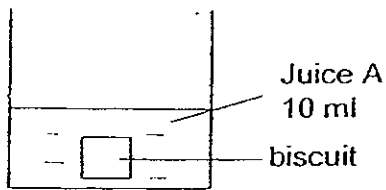
26. Jonathan carried out an experiment to find out which juice, A or B will dissolve a biscuit faster. He prepared four set-ups as shown below.



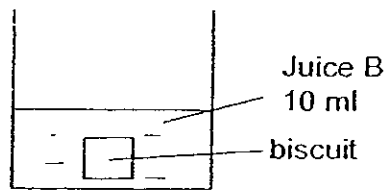
Set-up P



Set-up Q



Set-up R

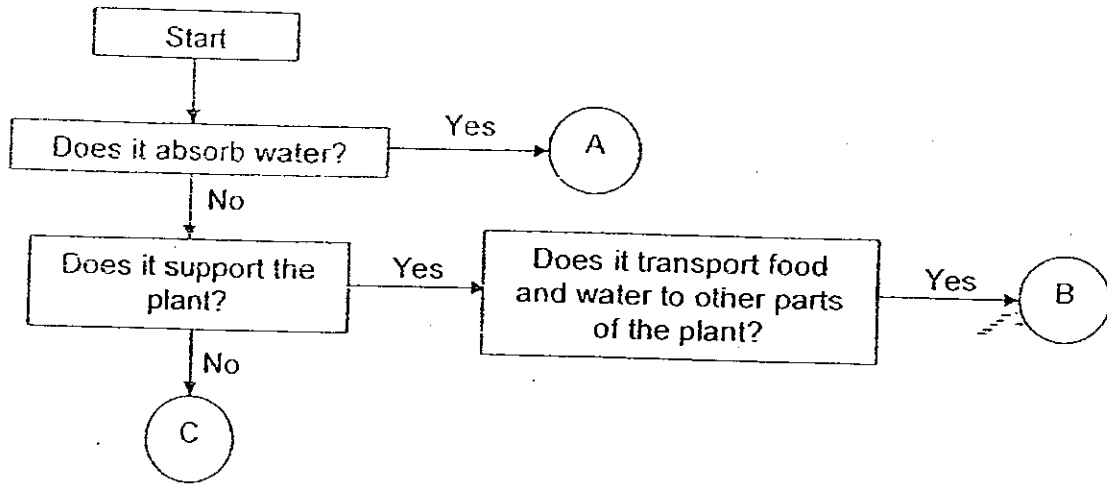


Set-up S

Which two set-ups should Jonathan use for a fair experiment?

- (1) P and R only
- (2) Q and S only
- (3) Q and R only
- (4) R and S only

27. The flowchart below describes the functions of different parts of a plant.



Which of the following represents plant parts A, B and C?

	Part A	Part B	Part C
(1)	Stem	Roots	Leaves
(2)	Stem	Leaves	Roots
(3)	Roots	Leaves	Stem
(4)	Roots	Stem	Leaves

28. The pictures below show two different plant parts.



potato



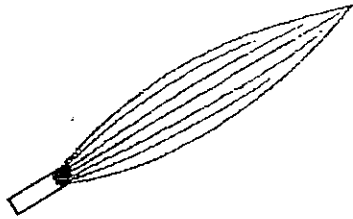
carrot

How are the above two plant parts similar?

- A: They are edible.
- B: They contain chlorophyll.
- C: They store food made by the leaves
- D: They absorb water and mineral salts for the plant.

- (1) B only
- (2) A and C only
- (3) A and D only
- (4) B and D only

29. Look at the pictures below.



Leaf R



Leaf S

Three pupils each made a statement about leaves R and S as shown above.

Adeline: Both leaves R and S have the same edge.

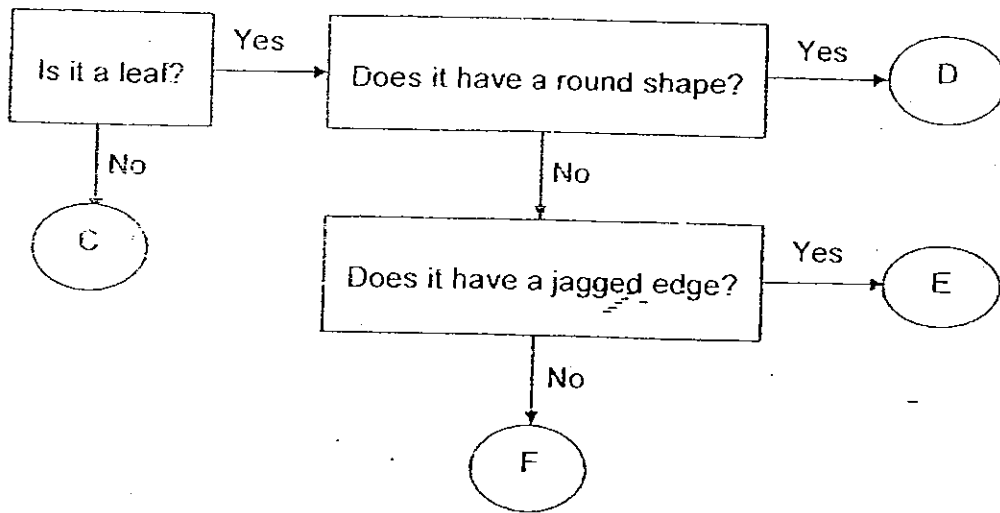
Bobby: Leaf R has an entire edge but Leaf S has a lobed edge.

Corrine: Leaf R has an oval shape but Leaf S has a round shape.

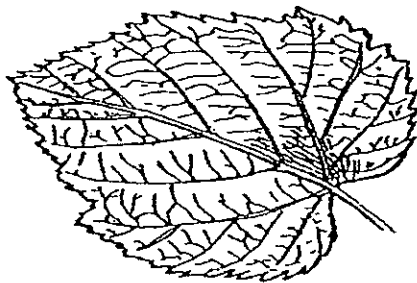
Which of the following pupil(s) has/have made the correct statement(s)?

- (1) Adeline only
- (2) Bobby only
- (3) Adeline and Corrine only
- (4) Bobby and Corrine only

30. Look at the flowchart below.



Angeline found plant part P as shown below.



Plant part P

In which group should plant part P be placed?

- (1) Group C
- (2) Group D
- (3) Group E
- (4) Group F

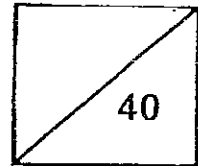
End of Booklet A



Rosyth School
Second Semestral Assessment for 2008
SCIENCE
Primary 3

Name: _____ ong _____

Total
Marks:



Class: Pr _____

Register No

Duration: 1 h 30 min

Date: 29th October 2008

Parent's Signature: _____

Booklet B

Instructions to Pupils:

1. For questions 31 to 46, write your answers in the spaces given in this Booklet.

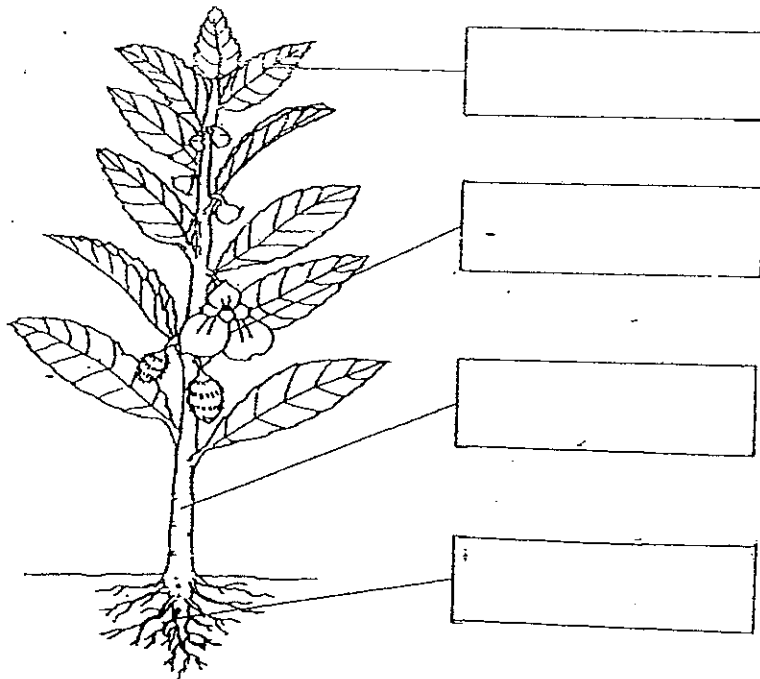
* This booklet consists of 13 pages.

This paper is not to be reproduced in part or whole without the permission of the Principal.

Part II (40 MARKS)

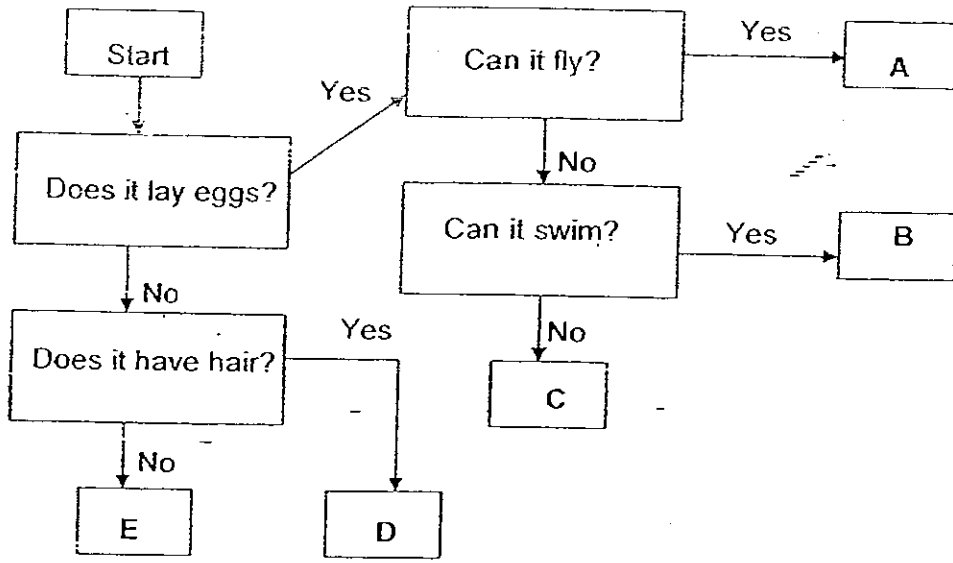
For questions 31 to 46, write your answers in the spaces provided.

31. (a) Label the parts of the balsam plant in the box provided. (2m)



(b) What is the shape of the leaf? (1m)

32. Study the flowchart below.



(a) From the flowchart above, identify the letter that represents each of the following animals. (1m)

i) Crocodile : _____

ii) Ostrich : _____

(b) State the characteristics of animal A. (1m)

(c) State the difference between animal D and animal E. (1m)

33. Refer to the six animals given in the box below.

cow	tiger	hen
duck	goat	cockroach

Fan Rong classified the animals into Insect, Bird and Mammal.

(a) Complete the table below for her using the six animals. (3m)

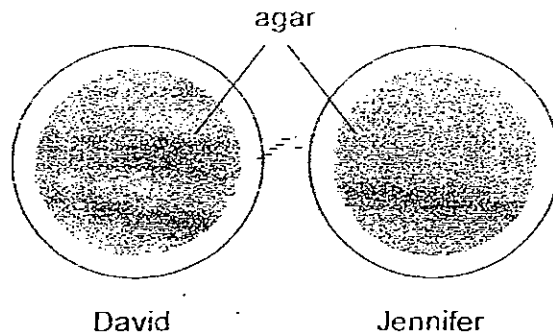
Insect	- Bird	Mammal

Samantha wanted to classify the same six animals based on how they reproduce.

(b) Complete the table below by providing the headings for the two groups. (1m)

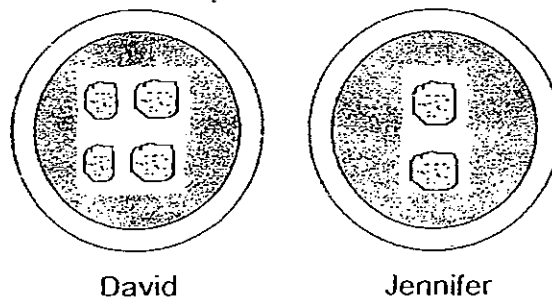
cow	hen
goat	duck
tiger	cockroach

34. Mr. Tan provided each of his pupils, David and Jennifer, a petri dish containing agar.



He asked them to make a print of their index finger on the agar. He covered each petri dish with a lid and sealed it with sticky tape. He left the petri dishes in a dark and damp place.

After five days, he observed more spots on David's petri dish than Jennifer's as shown below.



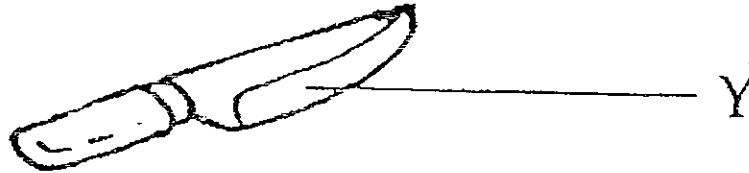
- (a) What does the observation indicate about the growth of bacteria on the two petri dishes? (1m)

In another experiment, Mr. Tan placed the petri dishes in a dry and cold place for five days.

- (b) What would he observe on the petri dishes after five days? (1m)

- (c) Give a reason for his observation in (b). (1m)

35. The diagram below shows a knife. Shawn used the knife to cut a piece of meat.



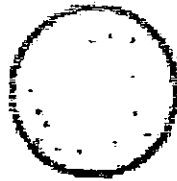
- (a) Which material should he choose for part Y? (1m)

- (b) Give a reason for your choice in (a). (1m)

36. Jerry put a marble and a ping pong ball into a tank of water.

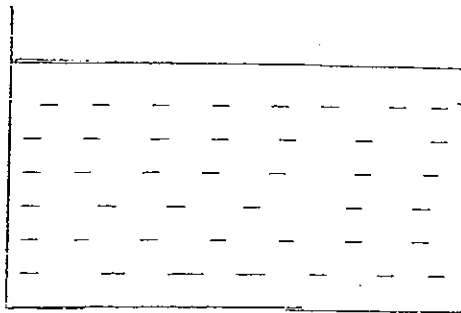


marble



ping pong ball

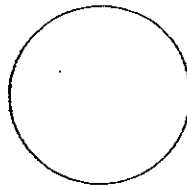
(a) Draw the marble and ping pong ball in the tank of water below and label them. (2m)



Next, Jerry put two more balls, one made of steel and the other made of styrofoam, into the tank of water and observed them.



Steel ball

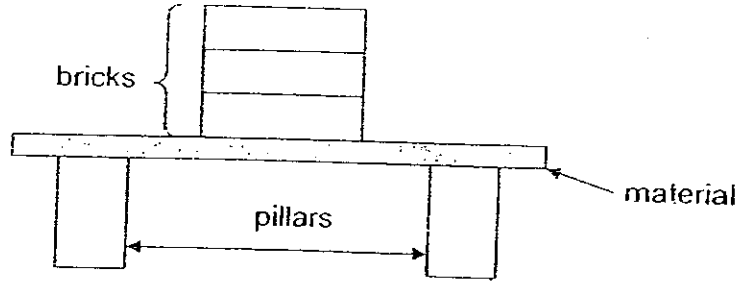


Styrofoam ball

(b) Classify the two balls under the correct headings. (1m)

Sink in water	Float in water

37. James carried out an experiment as shown in the diagram below. A material was placed over two pillars. Bricks were stacked on the piece of material till it broke.



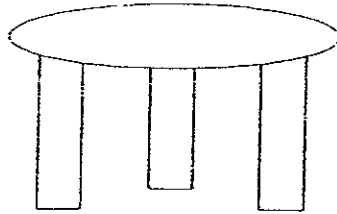
The table below shows the number of bricks taken to break each piece of material.

Material	Number of bricks it could hold before it broke
P	5
Q	1
R	9
S	7

- (a) Which one of the four materials (P, Q, R and S) is the strongest? (1m)

- (b) Give a reason for your choice in (a). (1m)

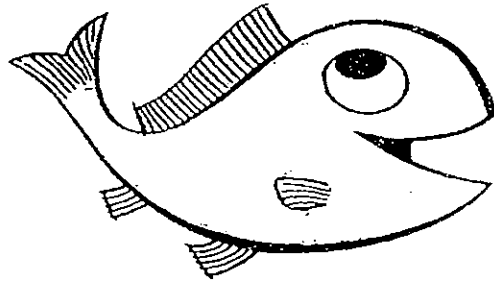
38. Study the picture of a stool as shown below.



(a) Write down two characteristics of the stool using your sense of sight only. (1m)

(b) Is the stool a system or a non-system? Give a reason for your answer. (1m)

39. Refer to the picture of a fish as shown below.

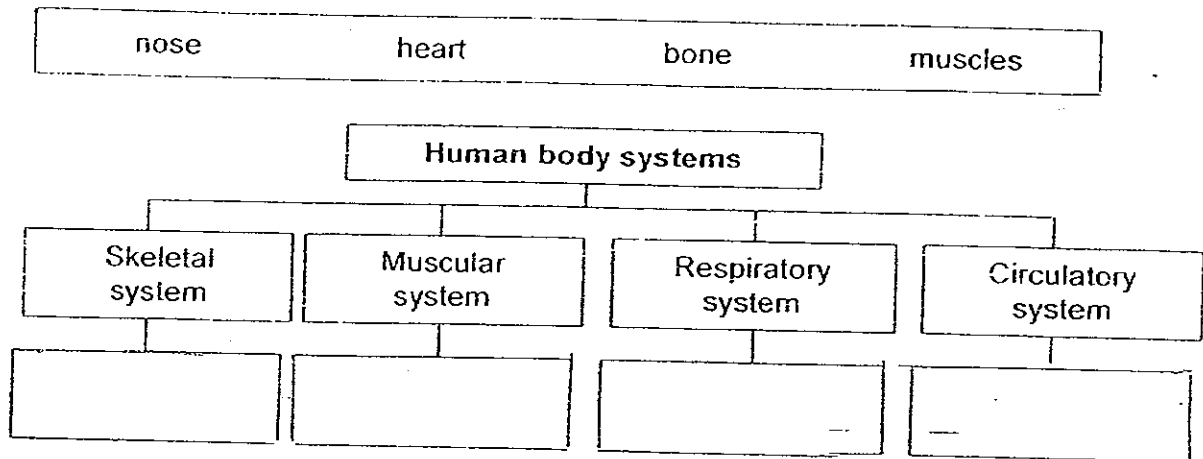


(a) Draw some scales on the fish above and label it. (1m)

(b) Name the part of the fish that helps it to swim in water. (1m)

(c) The fish will die if the gills are removed. Why? (1m)

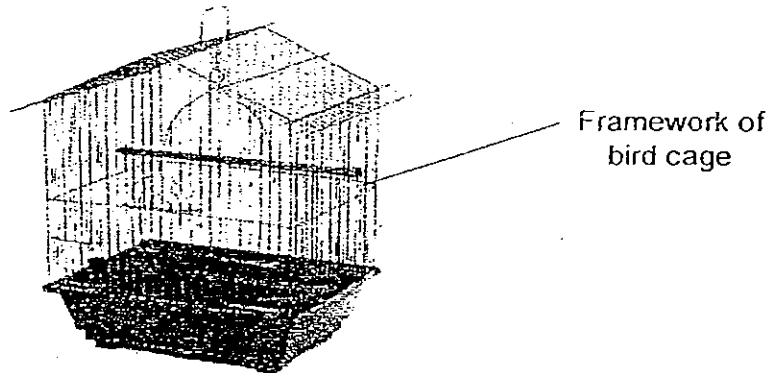
40. Classify the following body parts into the different human body systems below. (2m)



41. Match the following human body systems to their respective functions. (2m)

- | | |
|-----------------------------|--|
| <p>Skeletal system •</p> | <ul style="list-style-type: none"> • Carries food, water and oxygen to all parts of the body. |
| <p>Respiratory system •</p> | <ul style="list-style-type: none"> • Breaks down food into simple substances. |
| <p>Digestive system •</p> | <ul style="list-style-type: none"> • Gives the body its shape. |
| <p>Circulatory system •</p> | <ul style="list-style-type: none"> • Allows exchange of gases with the surroundings. |

42. MeiMei's father bought her a cage for her pet bird. He told her that the framework of the bird cage was made of metal sticks.



- (a) Which one of the human body systems has the same function as the framework of the bird cage? (1m)

- (b) State two ways the framework of the bird cage and your answer in (a) are similar in their functions. (1m)

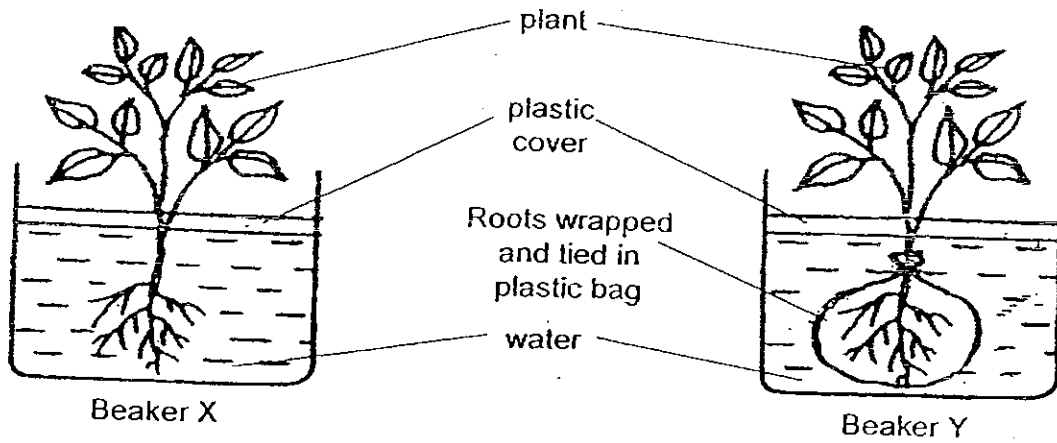
43. Yu Ling had a plate of chicken rice (20 grams) for dinner. The table below shows the amount of digested chicken rice in four parts (A, B, C and D) of her digestive system.

	Parts of Yu Ling's digestive system			
	Part A	Part B	Part C	Part D
Amount of digested chicken rice (in grams)	3	3	7	18

- (a) Which part of Yu Ling's digestive system is Part D most likely to be? (1m)

- (b) Explain why there is no increase in the amount of digested chicken rice in Part B. (1m)

44. Haikal set up two beakers, X and Y in a classroom.



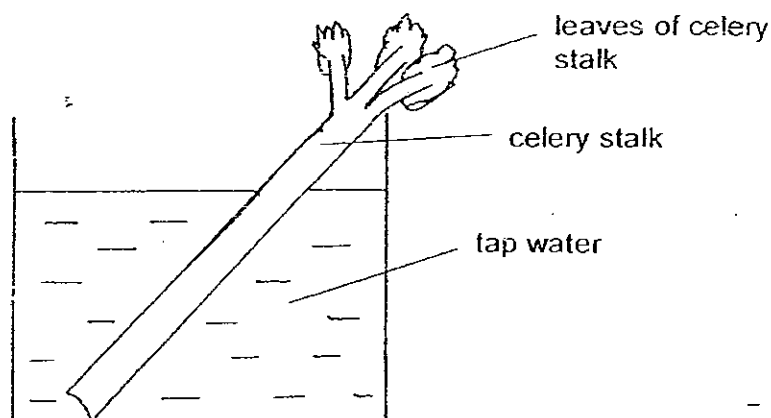
He recorded the volume of water when the plants were first placed in the beakers. After five days, he recorded the volume of water in the two beakers again. The results were recorded in the table as shown below.

	Volume of water on the first day	Volume of water on the fifth day
Beaker X	50 ml	39 ml
Beaker Y	50 ml	50 ml

(a) Why was there no change in the volume of water in Beaker Y? (1m)

(b) What difference would you observe between the two plants after one week? (1m)

45. Andrew set up an experiment using a beaker of tap water and celery stalk.

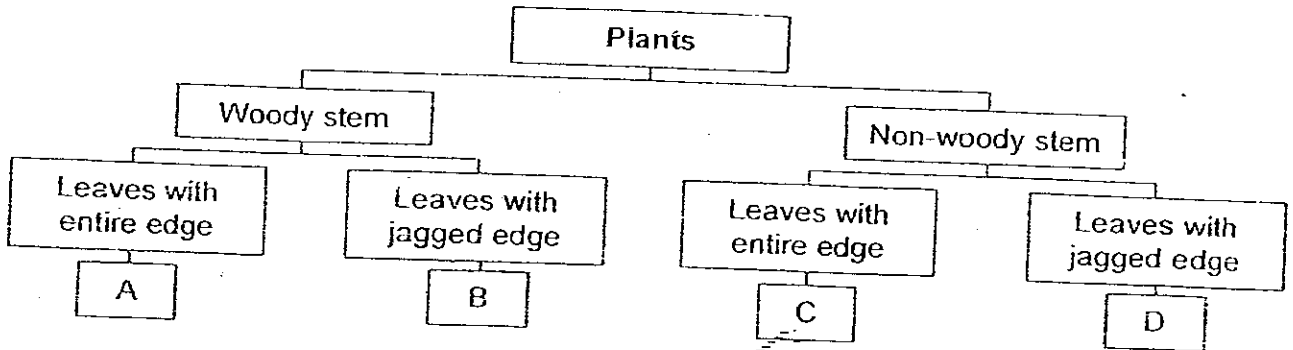


He wanted to show that water is transported from the stem to the leaves. After two days, he did not observe any changes to the celery stalk. His friend told him that his set-up was not a good one.

- (a) What would you do to improve the above set-up for Andrew's experiment? (1m)

- (b) After making an improvement to the set-up, Andrew observed a change in the celery stalk after a few days. What do you think he observed? (1m)

46. Look at the classification chart below.



(a) According to the chart above, state one difference between the plants in groups A and C. (1m)

(b) Look at Plant X below.



Plant X

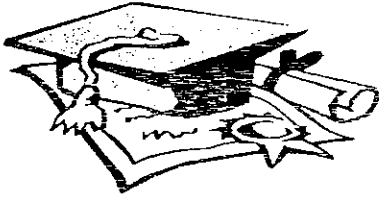
In which group would you place Plant X? (1m)

Group _____

(c) Using information from the chart only, plants in groups A, B, C and D were regrouped into two groups (Group Y and Group Z) below. Give suitable headings for the two groups. (1m)

Group Y: _____	Group Z: _____
A C	B D

End of paper



ANSWER SHEET

EXAM PAPER 2008

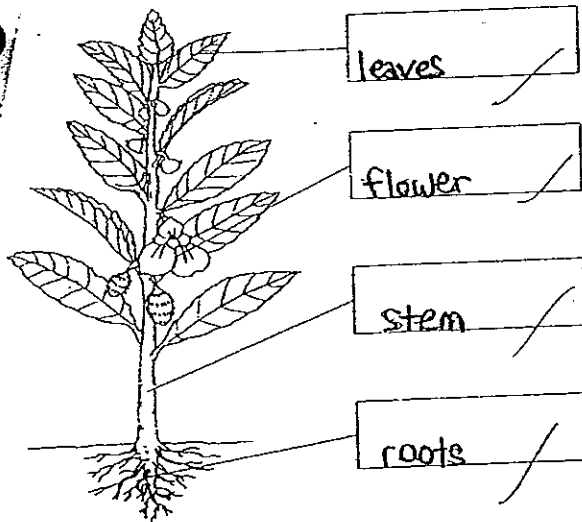
SCHOOL : ROSYTH PRIMARY SCHOOL
 SUBJECT : PRIMARY 3 SCIENCE

TERM : SA 2

Q1	Q2	Q3	Q4	Q5	Q6	Q7	Q8	Q9	Q10	Q11	Q12	Q13	Q14	Q15	Q16	Q17
4	3	3	2	4	4	2	2	1	1	2	4	3	1	2	2	4

Q18	Q19	Q20	Q21	Q22	Q23	Q24	Q25	Q26	Q27	Q28	Q29	Q30
1	3	2	4	1	2	1	3	4	4	2	2	3

31)a)



b) It is oval-shaped

32)a) i) B ii) C

b) Animal A lay eggs and can fly.

c) Animal D has hair while Animal F does not have hair.

33)a) Insect
Cockroach

Bird
cow
tiger
goat

Mammal
hen
duck

b) Gives Birth To Its Young

Lays Eggs

- 34)a) There is more bacteria growth on David's dish than Jennifer's
b) There would be very little bacteria.
c) Bacteria needs warmth and moisture to grow.

- 35)a) Metal.
b) Metal is strong and durable.

36)a)



ping pong ball

Marble

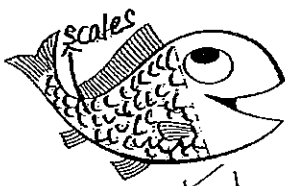
b) Steel ball

Styrofoam ball

- 37)a) Material R.
b) Material R was able to hold the most brick.

- 38)a) It has an oval seat and three legs.
b) It is a system, as the legs and base of the stool work together to enable us to sit.

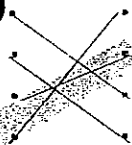
39)a)



- b) The fins.
c) It would not be able to take in oxygen.

40)bone , muscles , nose , heart

41).



42)a)The skeletal system.

b)They both give shape and protection.

43)a)Small Intestine.

b)Part B is the gullet, and the gullet does not digest food at all.

44)a)The plant in Beaker Y could not absorb any water as its roots were tied up in a plastic bag.

b)The plant in Beaker Y would have died, while the plant in Beaker X would have survived.

45)a)Andrew could add red colouring.

b)The celery stalk turned red.

46)a)The plants in group A has a woody stem, while the plants in group C has a non-woody stem.

b)B.

c)Y: Leaves with entire edge

Z: Leaves with Jagged edge