

**TAO NAN SCHOOL**

**PRIMARY 3 SCIENCE END-OF-YEAR EXAMINATION – 2009**

Name: \_\_\_\_\_ (       )      Date: 29 October 2009

Class: P3 \_\_\_\_\_

Duration: 1h 15min

**BOOKLET A**

**INSTRUCTIONS TO CANDIDATES**

Do not open this booklet until you are told to do so.

Follow all instructions carefully.

Answer all questions.

	Score	Marks
Section A		60
Section B		40
Total		100

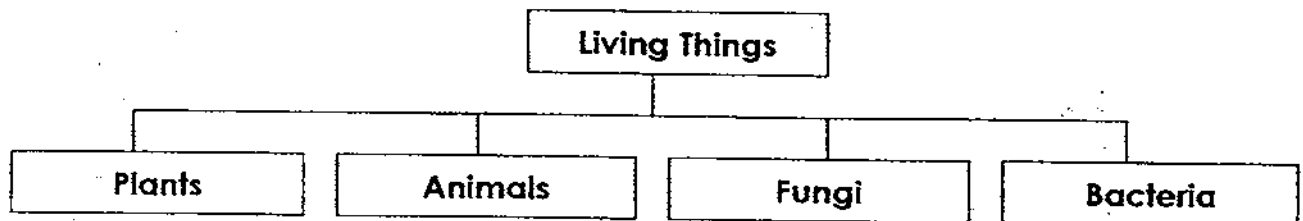
Parent's signature: \_\_\_\_\_

**Section A (30 x 2 marks)**

For each question from 1 to 30, four options are given. One of them is the correct answer. Make your choice (1, 2, 3 or 4). Shade the correct oval (1, 2, 3 or 4) on the Optical Answer Sheet.

---

1. Study the classification chart below.



Which group of living things do fish and birds belong to?

- (1) Plants
- (2) Animals
- (3) Fungi
- (4) Bacteria

2. Mary shuts her eyes immediately when a torch is shone at her eyes. What characteristic of living things does this show?

- (1) Living things grow.
- (2) Living things respond to their surroundings.
- (3) Living things reproduce.
- (4) Living things move from place to place.

3. Which of the following is a living thing?

- (1) A pebble
- (2) A seedling
- (3) A roasted chestnut
- (4) A burning candle

4. Which of the following will die if there is **no air**?



(1) Balloon



(2) Ant



(3) Pail

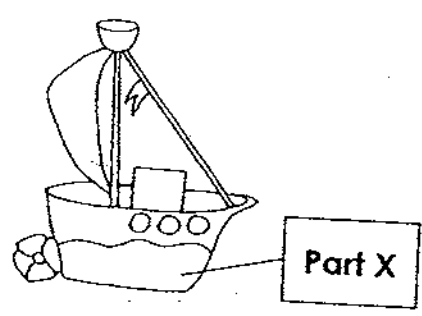


(4) Pencil

5. Tom knew there were durians in a room even before he entered. Which sense did he use?

- (1) Sense of sight
- (2) Sense of smell
- (3) Sense of touch
- (4) Sense of hearing

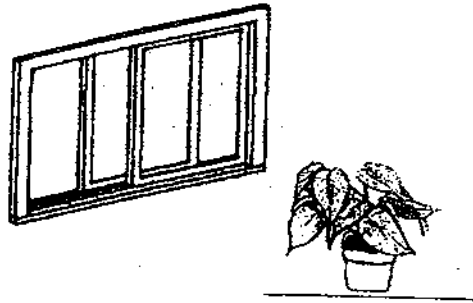
6. John needs materials for a toy boat competition. Which is the most suitable material for **Part X**?



Toy boat

- (1) paper
- (2) cardboard
- (3) sponge
- (4) styrofoam

7. Mrs Tan left a pot of plant near a window. After a week, she noticed that the plant had wilted. Why did the plant wilt?



- (1) It lacked air.
  - (2) It lacked water.
  - (3) It lacked food.
  - (4) It lacked light.
8. Peter tries to catch a lizard but its tail drops off. Which characteristic of living things does it show?



**Lizard loses its tail**

- (1) Living things die.
- (2) Living things grow.
- (3) Living things reproduce.
- (4) Living things respond to changes.

9. Which of the following material comes from plants?

- (1) Wool
- (2) Silk
- (3) Rubber
- (4) Leather

10. What is the path taken by food after it enters the mouth?

- (1) mouth → gullet → stomach → small intestine
- (2) mouth → gullet → small intestine → large intestine
- (3) mouth → small intestine → large intestine → stomach
- (4) mouth → large intestine → small intestine → stomach

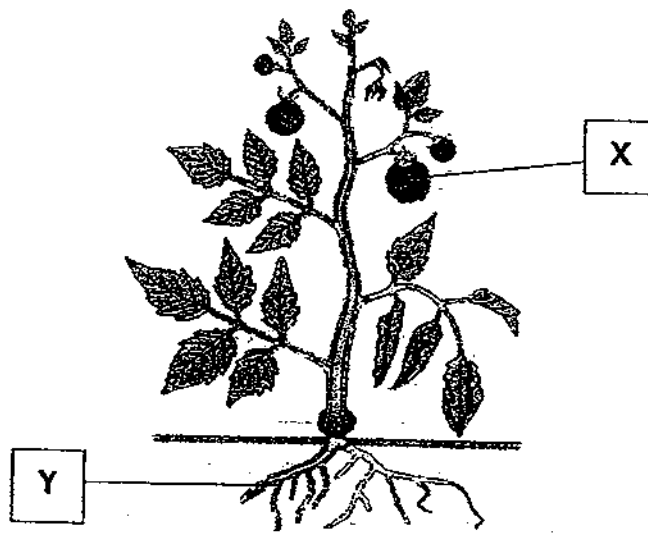
11. Father uses a magnet to hold a piece of paper onto the door of a refrigerator.  
What material is the door made of?

- (1) steel
- (2) plastic
- (3) copper
- (4) aluminium

12. The police make use of dogs to find hidden drugs. Which sense do dogs use to find the hidden drugs?

- (1) hearing
- (2) sight
- (3) smell
- (4) taste

13. The diagram below shows a green plant.



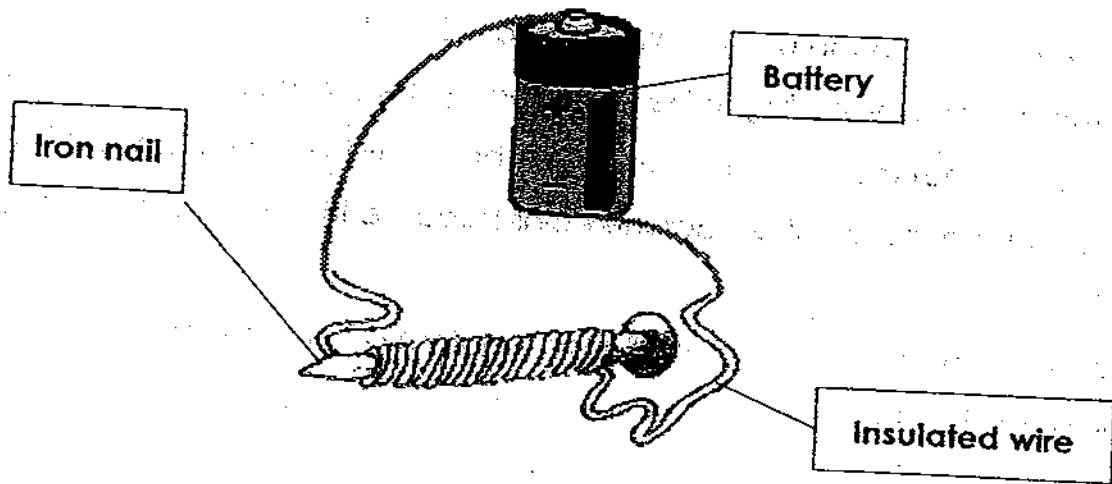
How does Y obtain its food?

- (1) The food is made by Y itself.
- (2) The food is absorbed from the soil.
- (3) The food is transported from X.
- (4) The food is transported from the leaves.

14. Which of the following has an outer body covering of hair?

- (1) Eagle
- (2) Snake
- (3) Dolphin
- (4) Alligator

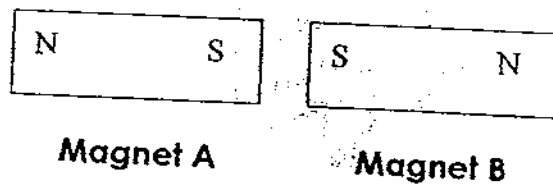
15. Joe is trying to make an electromagnet. He has wound a length of insulated wire round an iron nail as shown below.



What can Joe do to increase the strength of his electromagnet?

- (1) Use a shorter length of insulated wire.
- (2) Use a longer length of insulated wire.
- (3) Increase the number of turns of wire coiled round the nail.
- (4) Decrease the number of turns of wire coiled round the nail.

16. What will happen when two like poles of magnets are placed next to each other as shown below?

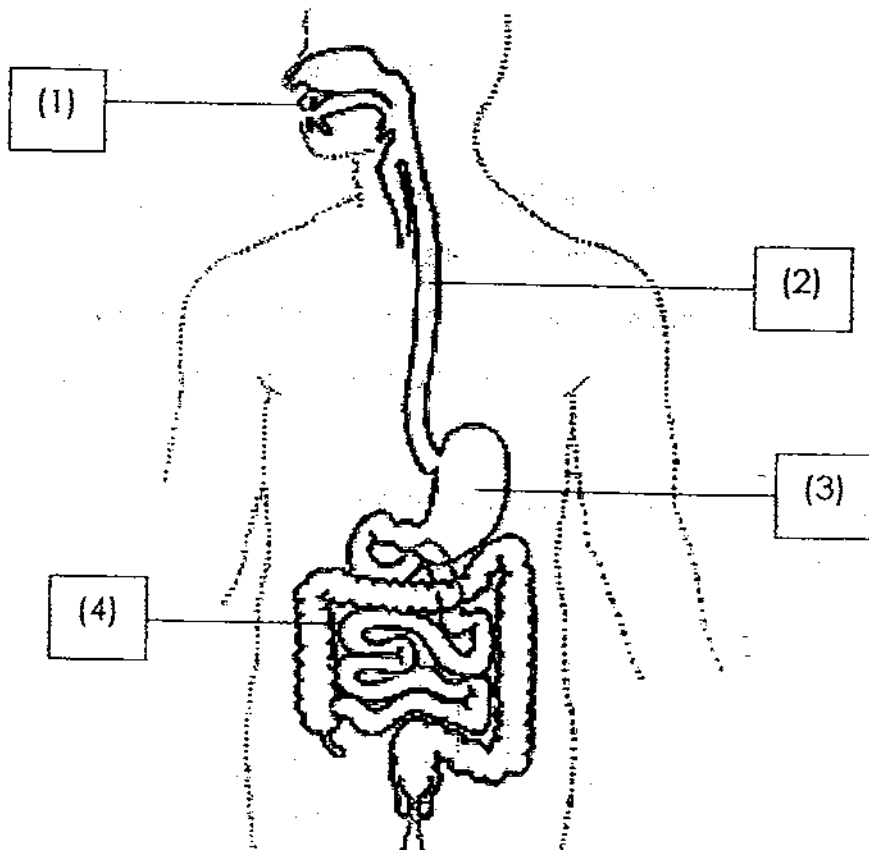


- (1) Magnet A will attract Magnet B.
- (2) Magnet B will attract Magnet A.
- (3) They will repel each other.
- (4) They will remain where they are.

17. A few boys used a magnet to attract some copper coins. None of the coins were attracted by the magnet. Which of the following is definitely true?

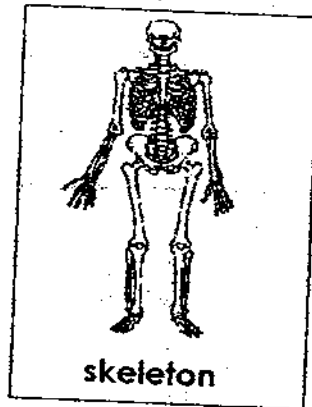
- (1) The coins were too heavy to be attracted by the magnet.
- (2) The coins were too big to be attracted by the magnet.
- (3) The magnet did not attract the coins because they were made of copper.
- (4) The magnet did not attract the coins because they were far away.

18. The diagram below shows the digestive system of a human body. Where does digestion begin?



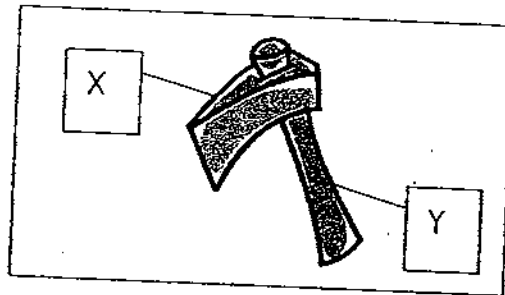


19. Which of the following is a function of our skeletal system?



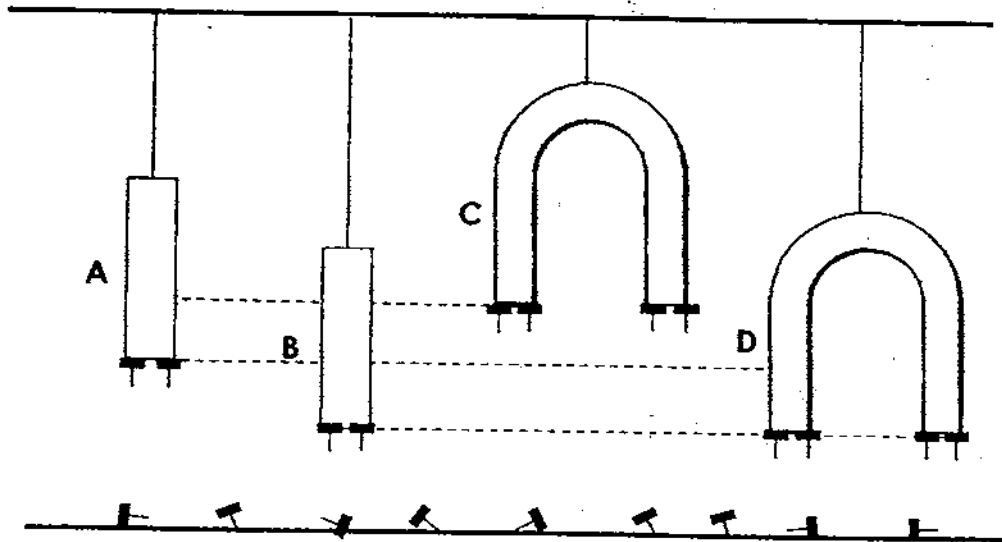
- (1) It supports our body.
- (2) It carries food to all parts of our body.
- (3) It removes carbon dioxide from our body.
- (4) It gets rid of undigested food from our body.

20. The drawing below shows an axe used for chopping trees. What are the materials used to make X and Y?



	X	Y
(1)	Plastic	Wood
(2)	Wood	Plastic
(3)	Metal	Wood
(4)	Wood	Metal

21. Gerald had four magnets, A, B, C and D. To compare the strength of the magnets, he hung the magnets above a pile of pins. The diagram below shows the number of pins attracted by the magnets, A, B, C and D, from various distances.



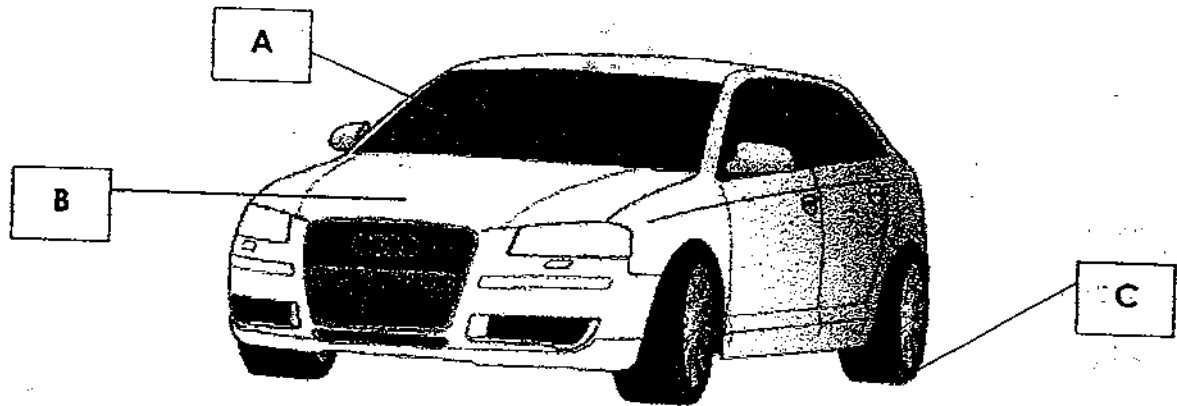
Which of the following statements is correct?

- (1) Magnet A is as strong a magnet as B.
- (2) Magnet B is a stronger magnet than C.
- (3) Magnet B is as strong a magnet as D.
- (4) D is the strongest magnet.

22. Mark ran after his dog in a park. Which two systems enabled him to do the above action?

- (1) Skeletal and muscular systems
- (2) Muscular and digestive systems
- (3) Digestive and circulatory systems
- (4) Circulatory and skeletal systems

23. The car below is made of several types of materials, A, B and C. The windscreen is made of A, the bonnet is made of B and the tyre is made of C.



What materials are A, B and C?

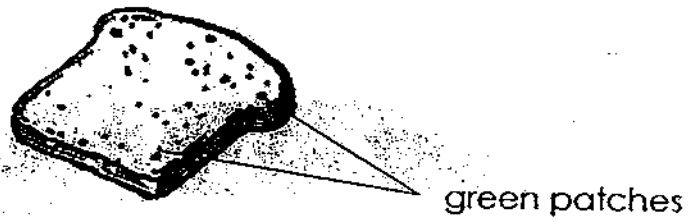
	A	B	C
(1)	Plastic	Metal	Rubber
(2)	Glass	Plastic	Rubber
(3)	Glass	Metal	Plastic
(4)	Glass	Metal	Rubber

24. Mike wants to make a bookshelf for a competition. What are the properties of the material to make the bookshelf?

- A) Hard
- B) Strong
- C) Flexible
- D) Waterproof

- (1) C only
- (2) B and C only
- (3) A, B and D only
- (4) A, B, C and D

25. Jack left a slice of bread in his locker. After a week, he saw green patches growing on the bread. What are these green patches?



- (1) Moss
- (2) Mould
- (3) Algae
- (4) Fern

26. Why does the root of a green bean seed grow before the leaf?

- (1) To absorb water for the seedling.
- (2) To keep the seedling upright.
- (3) To make food for the seedling.
- (4) To store food for the seedling.

27. Which object could be attracted by a magnet?

- (1) Rubber band
- (2) Plastic button
- (3) Paper clip
- (4) Cardboard box

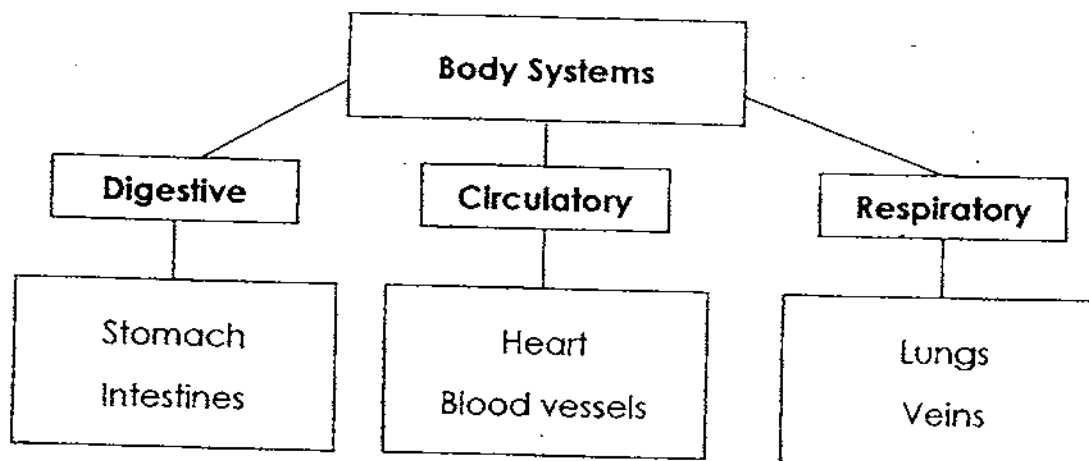
28. How can we tell the hardness of a material?

- (1) By heating it
- (2) By scratching it
- (3) By stretching it
- (4) By dropping it

29. Why does the fruit seller use wooden crates to transport durians rather than paper boxes?

- (1) They are soft.
- (2) They are flexible.
- (3) They are elastic and light.
- (4) They are strong and not easily broken.

30. Study the classification chart below. Which of the following is **wrongly** classified?



- (1) Veins
- (2) Heart
- (3) Intestines
- (4) Stomach

**TAO NAN SCHOOL**

**PRIMARY 3 SCIENCE END-OF-YEAR EXAMINATION – 2009**

Name: \_\_\_\_\_ ( ) Date: 29 October 2009

Class: P3 \_\_\_\_\_

Duration: 1h 15min

**BOOKLET B**

**INSTRUCTIONS TO CANDIDATES**

Do not open this booklet until you are told to do so.

Follow all instructions carefully.

Answer all questions.

	Score	Marks
Section B		40

**Section B (40 marks)**

**Write your answers in the spaces provided.**

31. Joe was drinking some water when he choked on the water that he was drinking.

(a) Which part of the body has the water travelled to? (1 mark)

---

---

(b) If Joe **did not** choke on the water, where will the water travel to just before it reaches his stomach? (1 mark)

---

---

32. Classify the following objects under the correct headings: (2 marks)

plastic fork	cotton shorts	porcelain vase	story book
--------------	---------------	----------------	------------

Things that were once alive <i>A</i>	Things that were never alive <i>B</i>

33. The diagram below shows 4 groups of living things. Give a suitable **heading** for each group. (4 marks)

Living Things			
(a)	(b)	(c)	(d)
_____	_____	_____	_____
Dolphin	Eagle	Bee	Mushroom
Killer Whale	Sparrow	Housefly	Bread mould

34.



Eagle

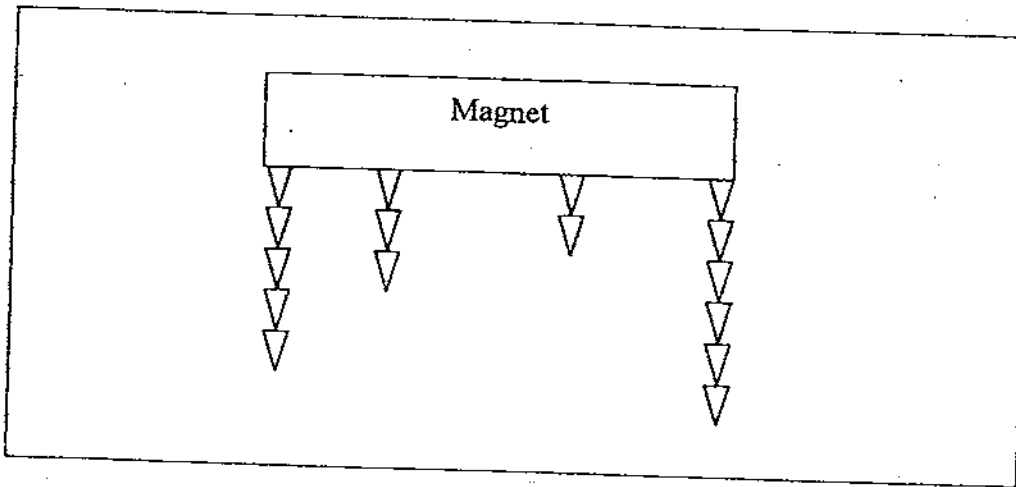
State two characteristics of an eagle shown above. (2 marks)

(a) \_\_\_\_\_

(b) \_\_\_\_\_



35. The diagram below shows a bar magnet after it has been dipped into a pile of paper clips.



(a) Which parts of the magnet has the strongest magnetic pull?  
(1 mark)

---

(b) What magnetic material is used to make the paperclips? (1 mark)

---

36. Indicate whether each of the following statements is **True**, **False** or **Not Possible To Tell**. Put a tick (✓) in the correct box. (4 marks)

	Statement	True	False	Not Possible To Tell
(a)	Saliva is a digestive juice.			
(b)	The gullet churns the food into smaller pieces.			
(c)	The stomach secretes gastric juice.			
(d)	The large intestine absorbs water.			

37. Ben compared the hardness of 4 rocks, A, B, C and D, by scratching them with different rods. He recorded his observations in the table below, using a tick (✓) to indicate the presence of scratch marks on the rocks.

Rock	Presence of scratch marks made by		
	plastic rod	wooden rod	iron rod
A			
B	✓	✓	✓
C			✓
D		✓	✓

Arrange the 4 rocks in increasing order of hardness. (2 marks)

			→ Hardest
B			

38. Sally has a beaker containing three powders, X, Y and Z mixed together. These powders cannot dissolve in water. The properties of the three powders are given in the table below.

	<b>Property A</b>	<b>Property B</b>
	Is it a magnetic material?	Does it float in water?
Powder X	Yes	No
Powder Y	No	Yes
Powder Z	Yes	Yes

(a) What should Sally do to separate powder X and powder Z from the three powders? (1m)

---

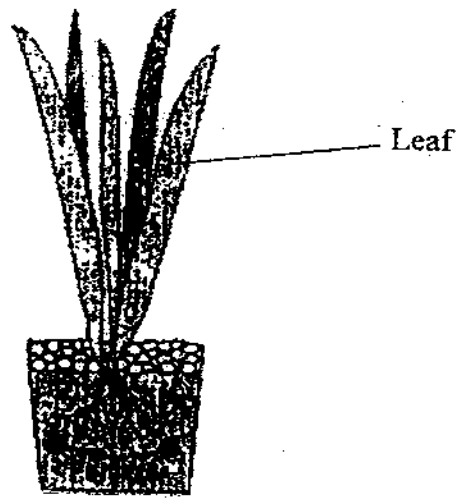
---

(b) After obtaining powder X and powder Z in (a), what should Sally do to obtain powder X? (1m)

---

---

39. Tom pours a glass of red-coloured water into a potted plant. After two days, he cuts a leaf and observes the cut end.

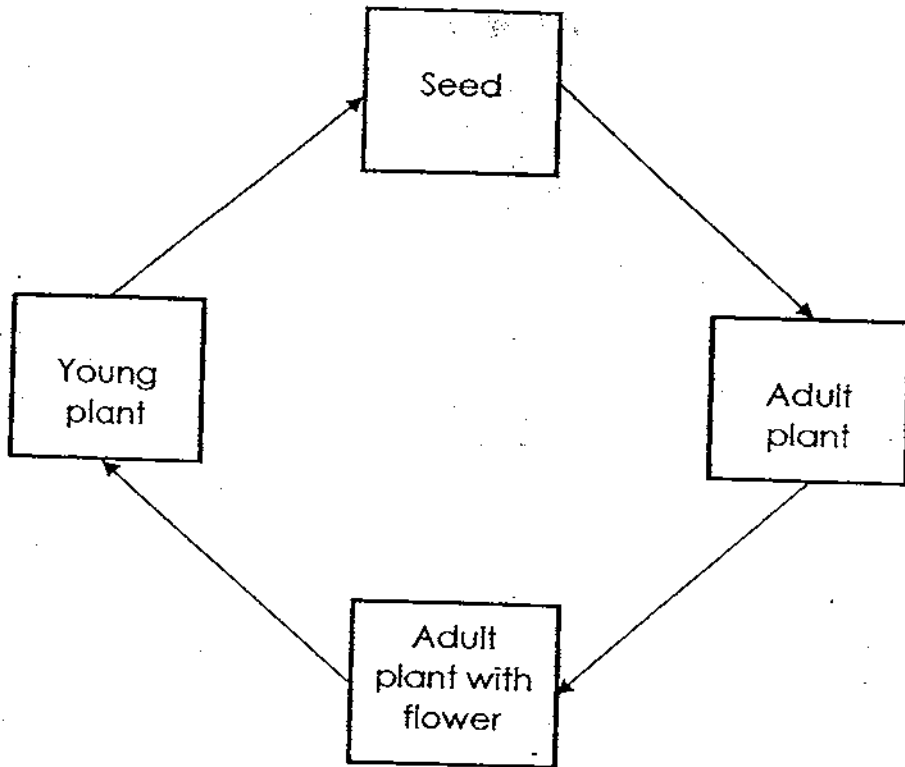


What is his observation? Explain why. (2 marks)

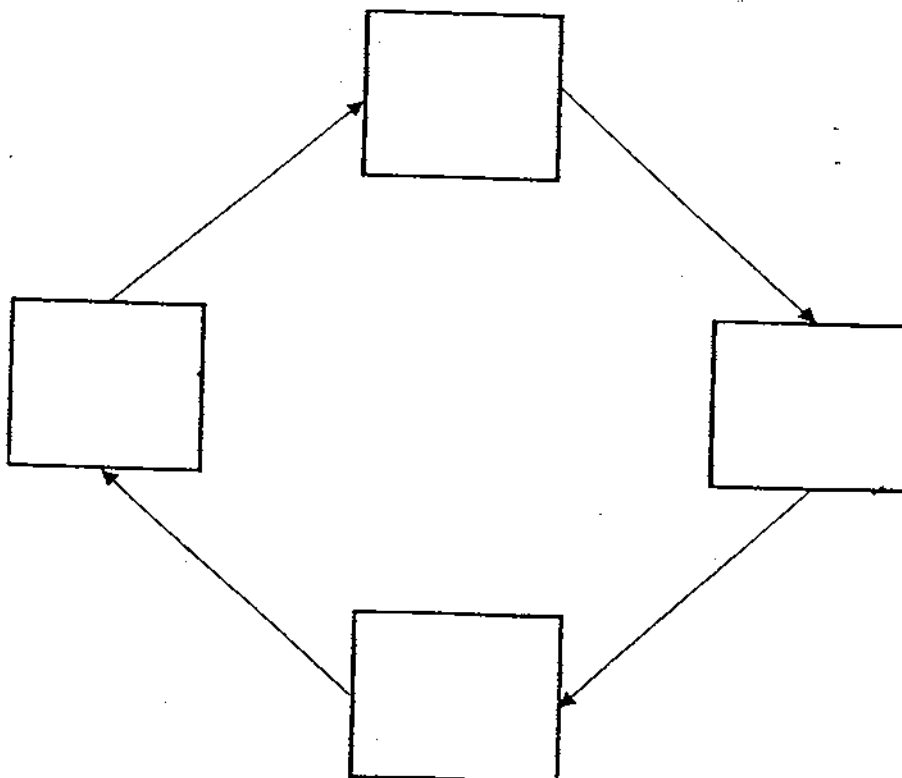
---

---

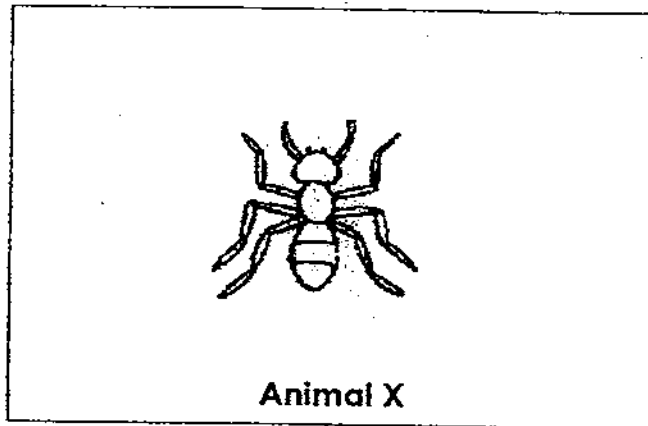
40. Rajan drew the diagram below to show the order of stages in the life cycle of a flowering plant. It is drawn wrongly.



Fill in the correct stages in the life cycle of a flowering plant in the diagram below. (2 marks)



41. Mark saw Animal X crawling on a table. He caught and observed it.



(a) How many main body parts does Animal X have? (1 mark)

---

(b) In which group of animals should Mark put Animal X? Explain why.  
(2 marks)

---

---

42. The penguin cannot fly.



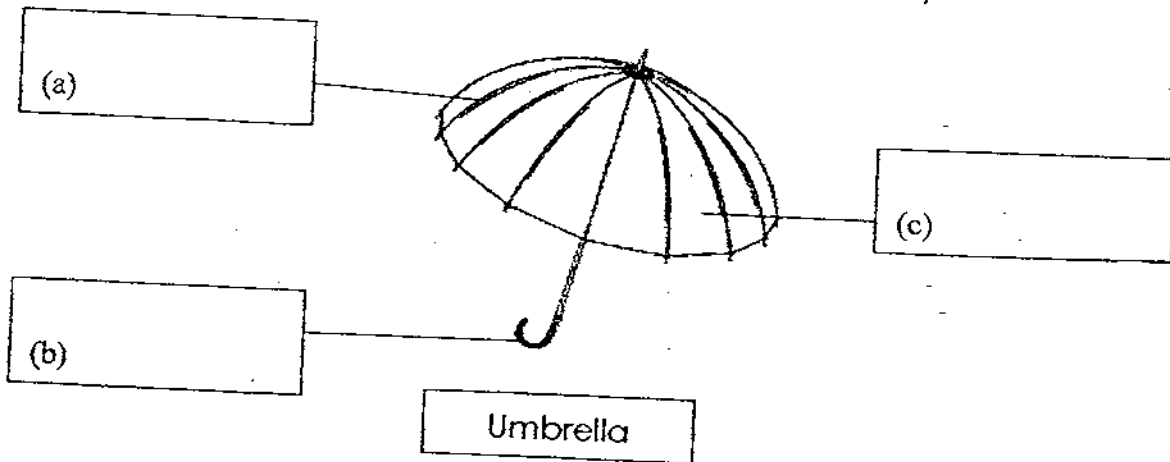
(a) How does it move from place to place? (1 mark)

---

(b) Explain why the penguin is a bird. (1 mark)

---

43. The umbrella below is made using different materials. Label the different materials used to make the umbrella. (3 marks)



44. Flowering plants take in water from their roots. What parts of the plants are the water transported to? (2 marks)

(a)	
(b)	
(c)	
(d)	

45. Study the classification table below.

Animals		
Group A	Group B	Group C
Marlin	Mousedeer	Bee
Shark	Tiger	Bird
Dolphin	Orang-utan	Snail

These animals are grouped accordingly to the places where they are found naturally. Identify the places and write them in the table below. (3 marks)

Group	Place
Group A	
Group B	
Group C	



46. Indicate whether each of the following statements is **True**, **False** or **Not Possible To Tell**. Put a tick (✓) in the correct box. (3 marks)

	<b>Statement</b>	<b>True</b>	<b>False</b>	<b>Not Possible To Tell</b>
(a)	The lungs remove carbon dioxide from the body			
(b)	The heart removes carbon dioxide from the lungs			
(c)	The lungs transport oxygen produced by the heart			

End of paper



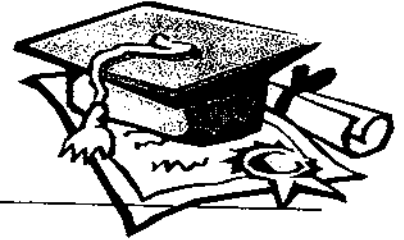


# ANSWER SHEET

**EXAM PAPER 2009**

**SCHOOL : TAO NAN PRIMARY  
SUBJECT : PRIMARY 3 SCIENCE**

**TERM : SA2**



Q1	Q2	Q3	Q4	Q5	Q6	Q7	Q8	Q9	Q10	Q11	Q12	Q13	Q14	Q15	Q16	Q17
2	2	2	2	2	4	2	4	3	1	1	3	4	3	3	3	3

Q18	Q19	Q20	Q21	Q22	Q23	Q24	Q25	Q26	Q27	Q28	Q29	Q30
1	1	3	3	1	4	3	2	1	3	2	4	1

- 31)a)It has travelled to the windpipe.  
b)It will travel to the gullet.
- 32)A: story book. Cotton shorts.  
B: plastic fork. Porcelain vase.
- 33)a)Mammals b)Birds c)insects d)Fungi
- 34)a)The eagle is covered with feathers.  
b)The eagle has a beak.
- 35)a)The poles. b)Steel.
- 36)a)T b)F c)T d)T
- 37)B, D, C, A
- 38)a)Place a magnet near the beaker and slowly lift the magnet up.  
b)Place them in a jar of water. The power that sinks is power X.
- 39)The leaf should be red. The stem transports water to the leaf.

40)

Seed

Adult plant with  
flower.

Young plant

Adult Plant

41)a)Three.

b)Insects. Animal X has six legs and three body parts.

42)a)It swims and walks.

b)The penguin's outer covering is feathers.

43)a)Metal

b)Plastic

c)Fabric

44)a)Stem

b)Leaves

c)Flower

d)Fruit

45)A: Sea B: Forest C: Garden

46)a)T b)F c)F