

Anglo-Chinese School (Junior)



SEMESTRAL ASSESSMENT 2 (2015)

PRIMARY 3

SCIENCE

BOOKLET A

Wednesday

4 November 2015

1 hr 30 min

Name: _____ () Class: 3.()


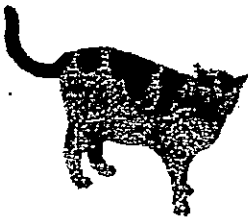


INSTRUCTIONS TO PUPILS

- 1 Do not turn over the pages until you are told to do so.
- 2 Follow all instructions carefully.
- 3 There are 25 questions in this booklet.
- 4 Answer ALL questions.
- 5 Shade your answers in the Optical Answer Sheet (OAS) provided.

Booklet A (50 marks)

For each question from 1 to 25, four options are given. One of them is the correct answer. Make your choice (1, 2, 3 or 4). Shade your answer on the Optical Answer Sheet. (25 x 2 marks)

1. Study the table below.

Group A	Group B
 Guitar	 Cat
 Plastic Cup	 Potted plant

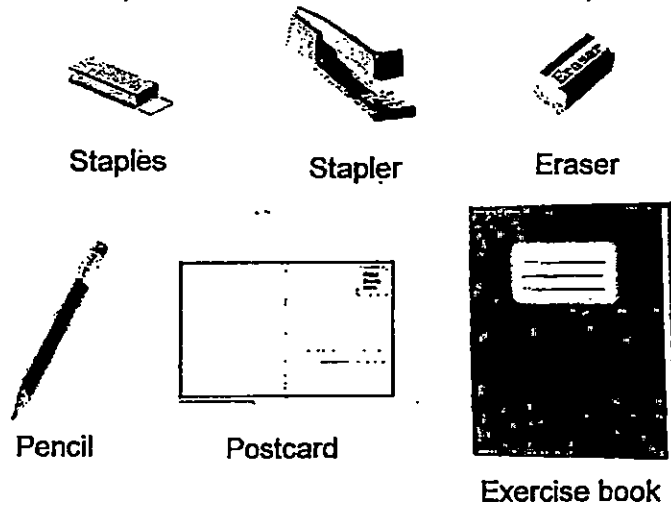
Which one of the following headings is most suitable for Groups A and B?

	Group A	Group B
(1)	Harmful Things	Useful Things
(2)	Non-Living Things	Living Things
(3)	Natural Material	Man-made Material
(4)	Cannot make its own food	Can make its own food

2. Which one of the following statements is **false** about all living things?

- (1) They can reproduce.
- (2) They can make their own food.
- (3) They can respond to their surroundings.
- (4) They need air, food and water to survive.

3. Oscar and Nat were given the six stationery items shown below.



Each boy grouped the stationery differently from each other as shown in the classification tables below.

Oscar

Group 1	Group 2
Eraser	Exercise Book
Pencil	Postcard
Staples	Stapler




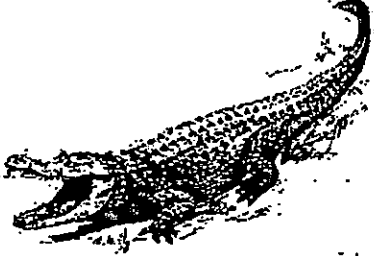


Nat

Group 1	Group 2
Eraser	Stapler
Exercise Book	Staples
Pencil	
Postcard	

Nat grouped the stationery according to _____.

- (1) their shape
- (2) their weight
- (3) what they are used for
- (4) how much light can pass through them

4. Rick classified six things into 2 groups based on a characteristic in the table below.

Group A	Group B
 <p data-bbox="491 600 561 631">Snail</p>	 <p data-bbox="970 600 1050 631">Eagle</p>
 <p data-bbox="481 958 555 990">Toad</p>	 <p data-bbox="944 967 1066 999">Crocodile</p>
 <p data-bbox="485 1272 549 1303">Fish</p>	 <p data-bbox="932 1281 1075 1312">Cockroach</p>

Which one of the following items has been classified wrongly?

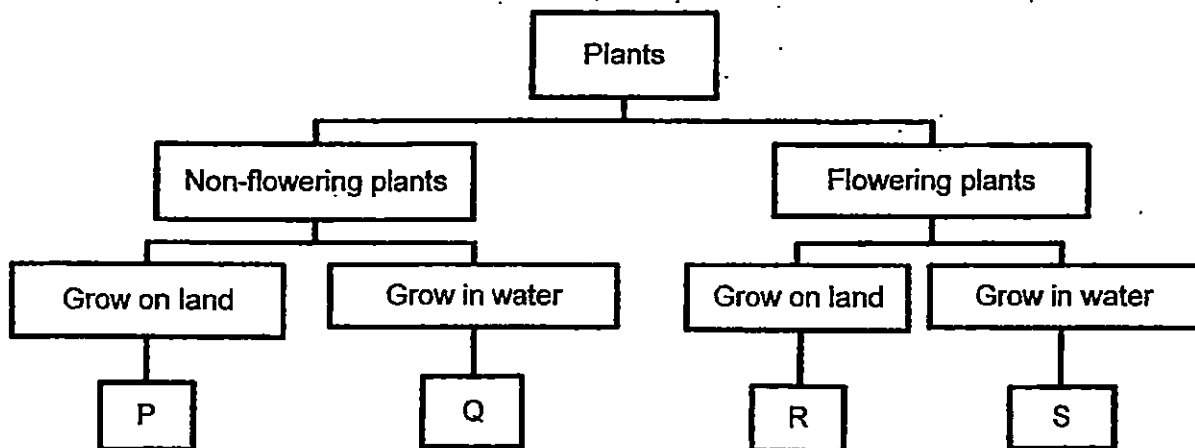
- (1) Snail
- (2) Toad
- (3) Eagle
- (4) Cockroach

5. Which of the following statements about plants are correct?

- A Plants grow towards light.
- B Fern is a non-flowering plant.
- C Only flowering plants have fruits.
- D All flowering plants can produce flowers throughout the year.

- (1) A, B and C only
- (2) A, B and D only
- (3) A, C and D only
- (4) B, C and D only

6. Study the classification chart below.

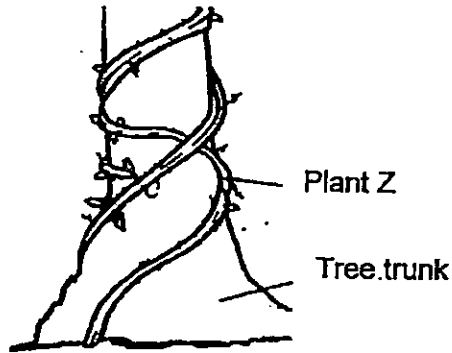


Water Lily

Which plant P, Q, R or S represents the Water Lily?

- (1) P
- (2) Q
- (3) R
- (4) S

7. Ali and his friends found Plant Z growing on a tree trunk as shown below.

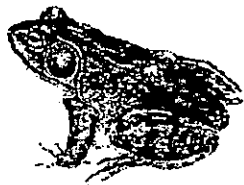


They made the following statements about Plant Z:

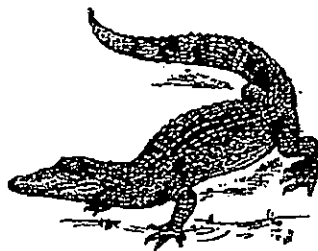
- Ali: It makes food for the tree.
 Bernard: It holds the tree firmly to the soil.
 Candy: It supports the tree to stand upright.
 Devi: It climbs up the tree trunk to get sunlight.

Who made the correct statement?

- (1) Ali
 (2) Devi
 (3) Candy
 (4) Bernard
8. Study the pictures below carefully.



Frog



Crocodile

How are these animals similar?

- (1) They have scales.
 (2) They have moist skin.
 (3) They do not have constant body temperature.
 (4) They breathe through their gills when they are in water.

9. Which one of the following is **not** a characteristic of all birds?




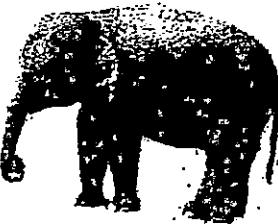
- (1) They can fly.
- (2) They lay eggs.
- (3) They have a pair of legs.
- (4) They have feathers to keep them warm.

10. Which of the following statements are true?

- A Only birds have feathers.
- B Only insects have 3 pairs of legs.
- C Only fish have scales on their body.
- D Only mammals give birth to their young.

- (1) A and B only
- (2) A and D only
- (3) B and C only
- (4) C and D only

11. Andy classified four animals into 2 groups as shown in the table below.

A	B
<div style="text-align: center;">  <p>Chicken</p>  <p>Clownfish</p> </div>	<div style="text-align: center;">  <p>Goat</p>  <p>Elephant</p> </div>

Andy classified the animals according to the _____.

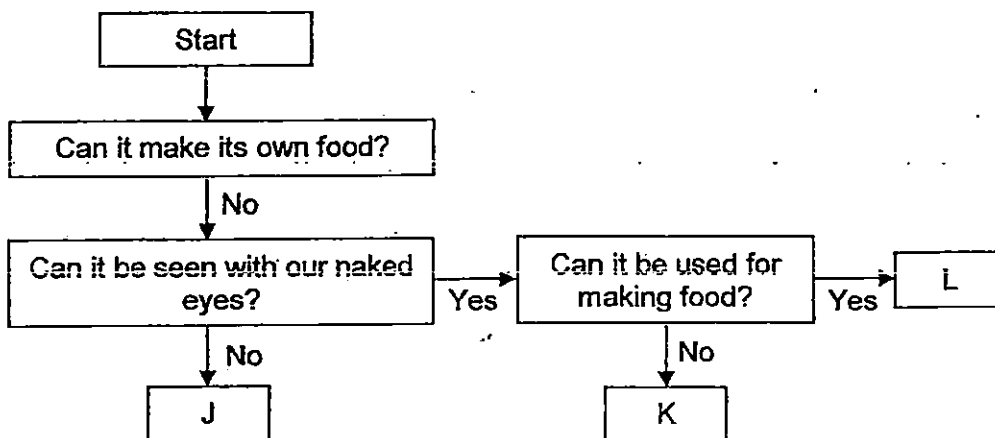
- (1) place they live
- (2) way they move
- (3) way they reproduce
- (4) outer covering they have

12. Four students did some research on bacteria. Their findings are listed in the table below.

Students	Findings
Alex	Bacteria are microorganism.
Ben	All bacteria are harmful to human.
Caleb	Bread mould is a type of harmful bacteria.
Dennis	Bacteria can be used for medicinal purposes.

Which student(s) made the correct statement(s) about bacteria?

- (1) Alex only
 (2) Alex and Dennis only
 (3) Caleb and Dennis only
 (4) Alex, Ben, Caleb and Dennis
13. Study the flowchart below.



What can L be?

- (1) Moss
 (2) Yeast
 (3) Bacteria
 (4) Antibiotics

14. Mark wanted to conduct an experiment on the growth of mould. He sprinkled 5 drops of water on two similar pieces of cake, Cake M and Cake N. He then placed Cake M in the fridge and Cake N in the garden. He noted down his observation in the table below.

Day	Observations	
	Cake M	Cake N
2	No coloured patch	One small green-coloured patch
4	No coloured patch	Two small green-coloured patches
6	No coloured patch	Both patches grew bigger in size.
8	No coloured patch	Both patches grew bigger in size and changed colour from green to black.

The aim of Mark's experiment is to find out if mould needs _____.

- (1) air to grow
 - (2) food to grow
 - (3) water to grow
 - (4) warmth to grow
15. The picture below shows a raincoat.

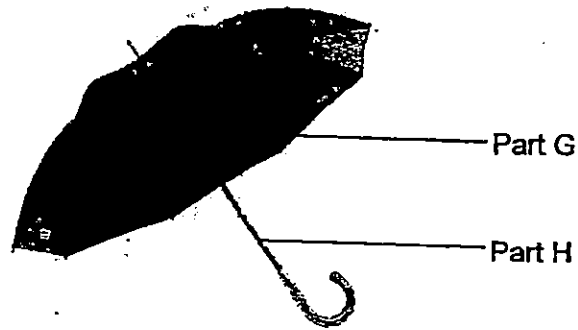


Raincoat

Plastic is a suitable material for making a raincoat because it is:

- A stiff
 - B light
 - C waterproof
- (1) A only
 - (2) B only
 - (3) B and C only
 - (4) All of the above

16. The diagram below shows the different parts of an umbrella.



What materials are Parts G and H most likely made of?

	G	H
(1)	Rubber	Glass
(2)	Metal	Metal
(3)	Metal	Fabric
(4)	Glass	Fabric

17. Which one of the following objects is not made from a material which comes from a plant?

(1)



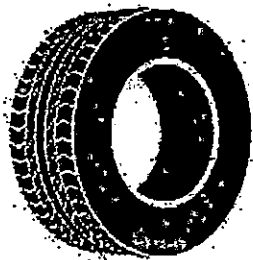
Wooden chair

(2)



Cotton T-shirt

(3)



Tyre

(4)



Glass bottle

18. Which of the following statements best describe the function of our skeletal system?

- A It supports the body.
- B It takes air into the body.
- C It gives the body its shape.
- D It carries waste materials away from different parts of the body.

- (1) A and C only
- (2) A and D only
- (3) B and C only
- (4) B and D only

19. Which of the following parts are matched to the systems correctly?

	Digestive System	Respiratory System	Skeletal System
(1)	Mouth	Heart	Skull
(2)	Stomach	Blood Vessels	Muscles
(3)	Lungs	Nose	Backbone
(4)	Small intestine	Windpipe	Rib

20. Some pupils were discussing about the human digestive system.

Adrian: Digestion of food ends in the large intestine.

Ben: Chewing our food is part of the digestive process.

Clare: Digestive juices are not produced in the large intestine.

Daniel: All the organs in the digestive system are involved in digestion.

Whose statements are correct?

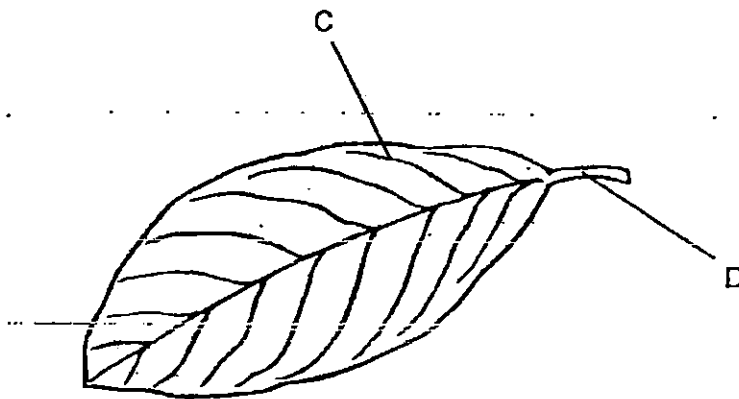
- (1) Ben and Clare only
- (2) Ben and Daniel only
- (3) Adrian and Clare only
- (4) Adrian and Daniel only

21. What are the materials that are carried in the blood to all parts of the body?

- A Water
- B Oxygen
- C Digested food
- D Undigested food

- (1) A and B only
- (2) B, C and D only
- (3) A, B and C only
- (4) A, C and D only

22. Study the picture of a leaf below.



Leaf

Which of the following best represent Parts C and D?

	C	D
(1)	Stalk	Blade
(2)	Vein	Stalk
(3)	Stem	Vein
(4)	Blade	Stem

23. Which one of the following best describes a function of a leaf?

- (1) Support the plant.
- (2) Provide fruits for the plant.
- (3) Absorb minerals for the plant.
- (4) Help the plant to take in and give out gases.

24. Which one of the following is not the stem of a plant?

(1)



Orange

(2)



Ginger

(3)



Sugarcane

(4)



Potato

25. George wanted to find out if the number of leaves affect the growth of the plants. He listed the variables for his experiment below.

- A Type of plant
- B Amount of water
- C Location of plant
- D Number of leaves

Which of the variables must be kept constant to ensure a fair test?

- (1) B and D only
- (2) A and C only
- (3) A, B and C only
- (4) A, B, C and D

End of Booklet A

Anglo-Chinese School (Junior)



SEMESTRAL ASSESSMENT 2 (2015)

PRIMARY 3

SCIENCE

BOOKLET B

Wednesday

4 November 2015

1 hr 30 min

Name: _____ () Class: 3.() Parent's Signature: _____

INSTRUCTIONS TO PUPILS

- 1 Do not turn over the pages until you are told to do so.
- 2 Follow all instructions carefully.
- 3 There are 14 questions in this booklet.
- 4 Answer ALL questions.
- 5 The marks are given in the brackets [] at the end of each question or part question.

Booklet	Possible Marks	Marks Obtained
A	50	
B	40	
PBA	10	
Total	100	

Booklet B (40 marks)

For questions 26 to 39, write your answers in this booklet.

The number of marks available is shown in brackets [] at the end of each question or part question.

26. Alex placed a caterpillar in a jar that was sealed with paper and tied with a string as shown below.



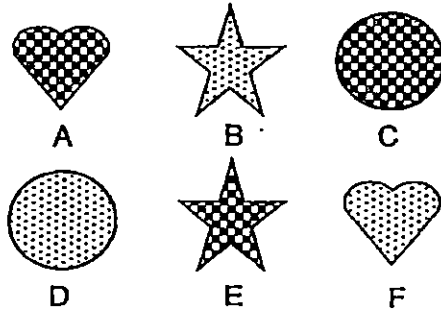
- (a) Alex observed that the caterpillar died after a few days. Explain why. [1]

- (b) What could Alex have done to ensure that the caterpillar survives in the jar without escaping? [1]

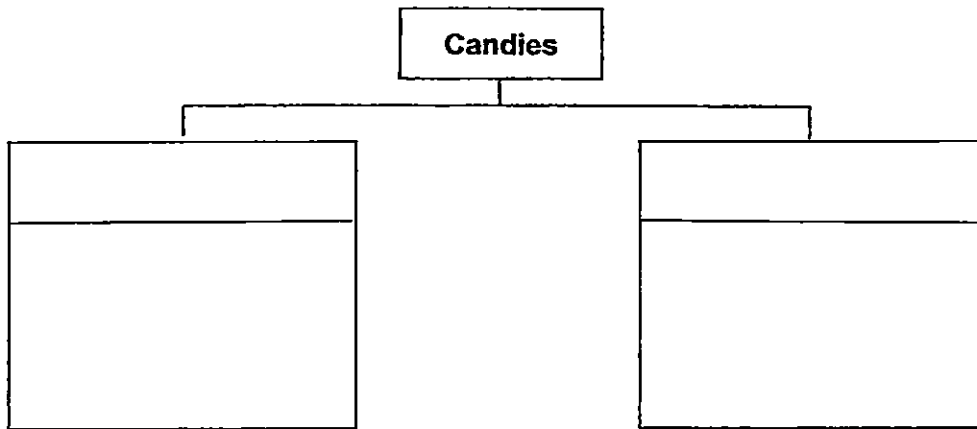
(Go on to the next page)

SCORE	<hr/>
	2

27. Hanson was given six candies, A, B, C, D, E and F, as shown below.



(a) Classify the candies, A, B, C, D, E and F **equally** using the classification chart below. Write the letters A, B, C, D, E and F and give suitable sub-headings in the spaces provided. [2]

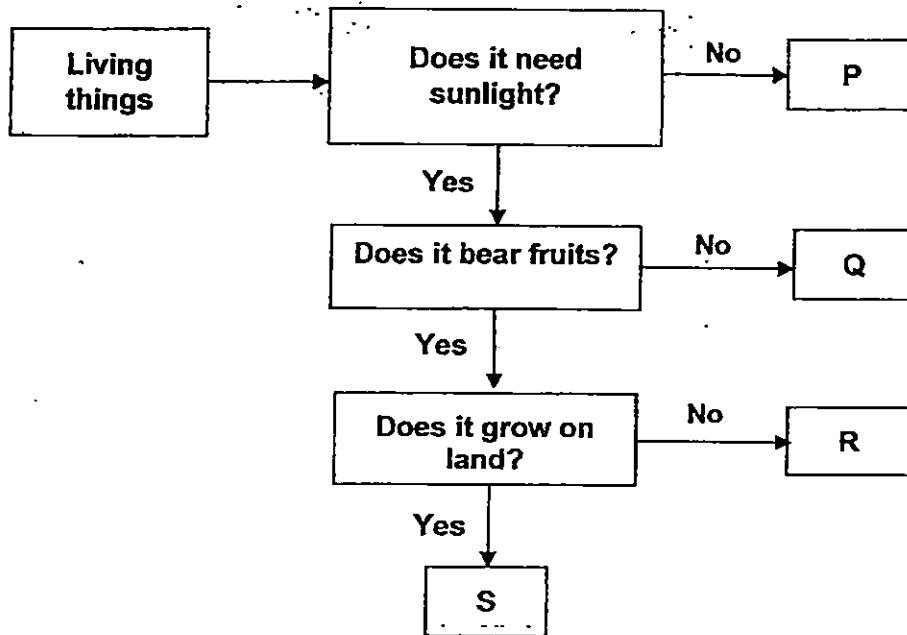


(b) State another characteristic that can be used to classify the candies, A, B, C, D, E and F. [1]

(Go on to the next page)

SCORE	3
-------	---

28. Study the flowchart below.



(a) Based on the flowchart, state all the characteristics of Q. [1]

(b) Based on the chart above, state a difference between P and R. [1]

(c) Which of the following letters, P, Q, R or S in the flowchart above describe the living things below? Write the correct letters in the boxes below. [1]

	Living Thing	Letter
(i)	Bird's Nest Fern	
(ii)	Mushroom	

(Go on to the next page)

SCORE	3
-------	---

29. Raju wanted to find out what type of soil is suitable for growing plants. He sets up two pots, G and H, as shown below.



G



H

[1]

- (a) Which variable(s) should Raju change?
Put a tick (✓) in the correct box(es) below.

Variable	Change
Type of plant	
Type of soil	
Amount of soil	
Amount of water given	

In another experiment, Raju placed 2 similar potted plants, S and T, in the garden as shown in the diagram below. He had covered all the leaves of Plant T with black cardboard and both plants were given the same amount of water each day for two weeks.



S



T

[1]

- (b) What is the aim of this experiment?

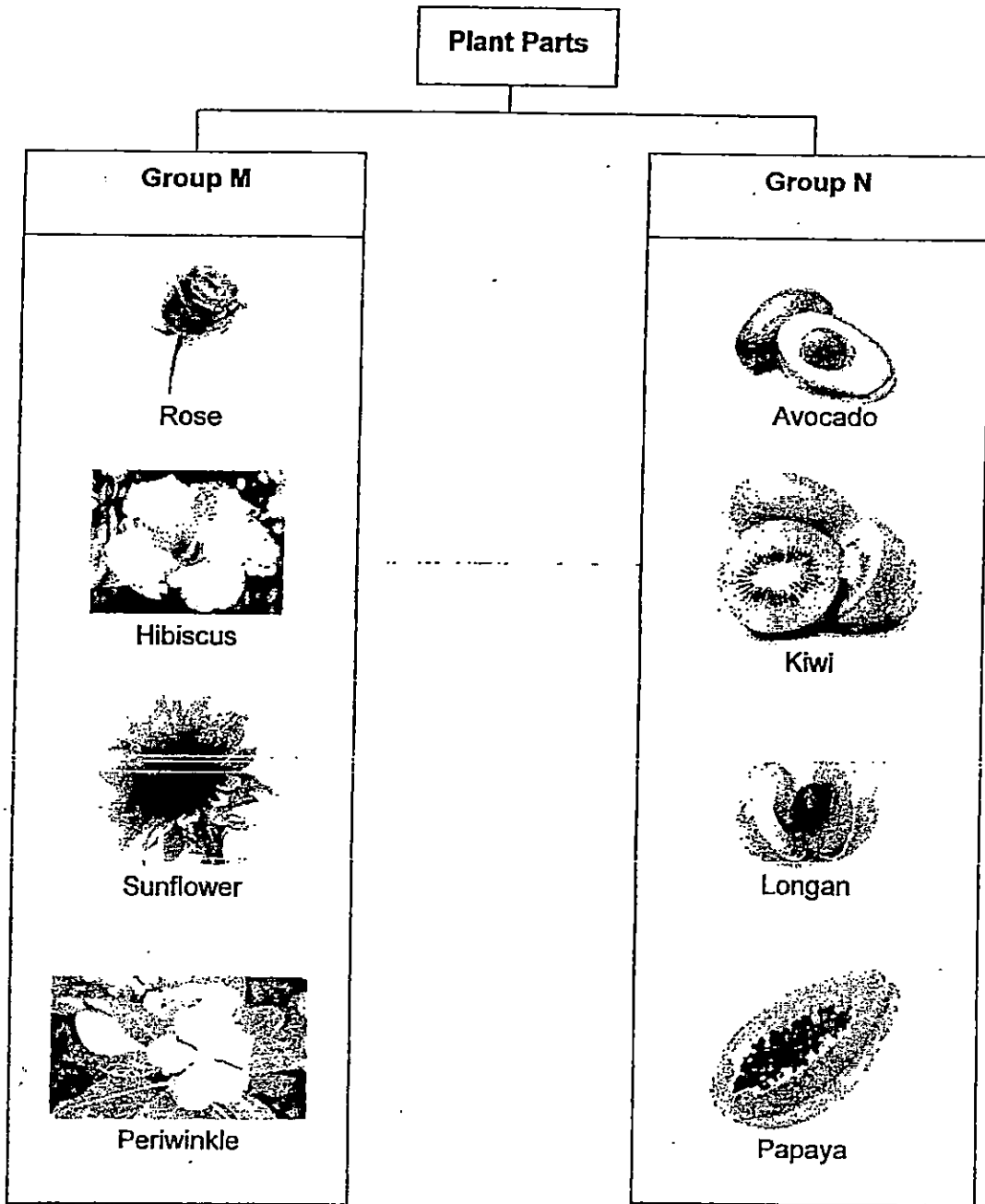
- (c) What will Raju observe about Plant T at the end of the two weeks?
Explain your answer.

[1]

(Go on to the next page)

SCORE	3
-------	---

30. Sam found some plant parts and grouped them as shown below.



(a) Give a suitable heading for Group M and Group N based on their plant parts. [1]

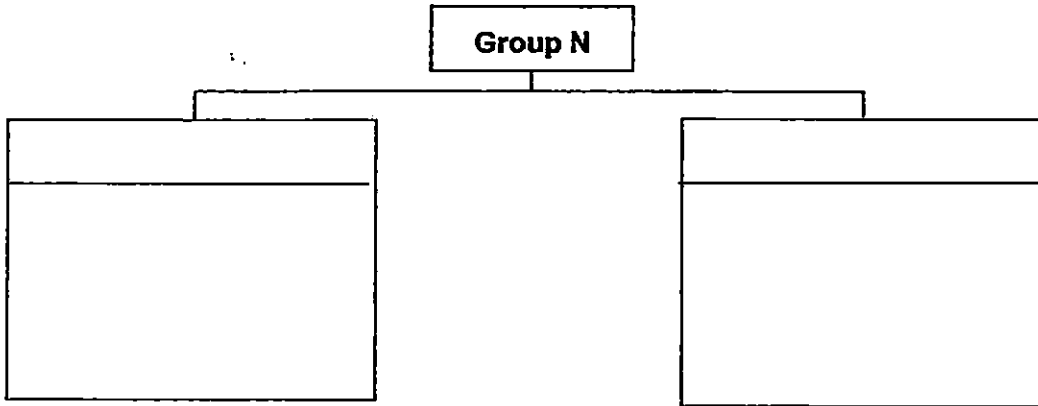
Group M: _____

Group N: _____

(Go on to the next page)

SCORE	1
-------	---

- (b) Sam can further classify the plant parts in Group N into 2 groups. Give suitable sub-headings for the two new groups and complete the classification chart below by stating the plant parts. (Do not compare their shape, colours and sizes) [1]



The pictures below show two plant parts.



Bananas



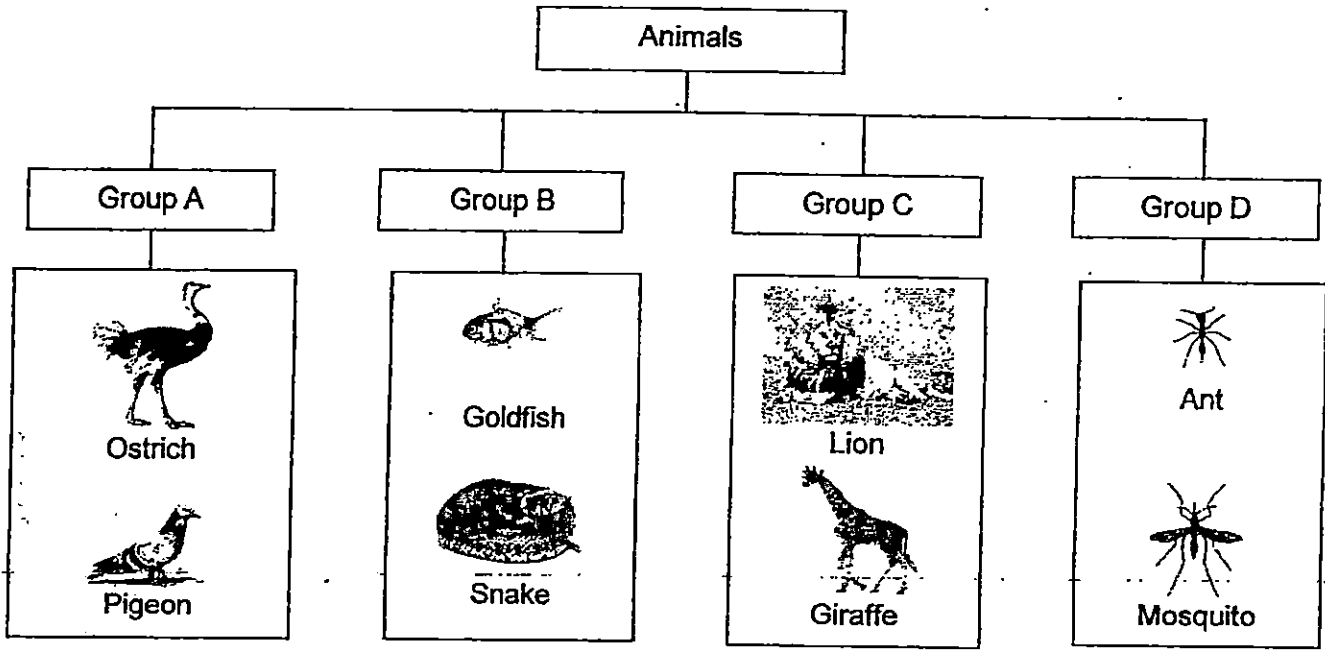
Ixora flowers

- (c) Based only on your observation of the bananas and Ixora flowers, state a similarity between them. [1]

(Go on to the next page)

SCORE	2
-------	---

31. Study the classification diagram below.



(a) How are the animals classified? [1]

(b) Give appropriate sub-headings for Groups A and B. [1]

Group A: _____

Group B: _____

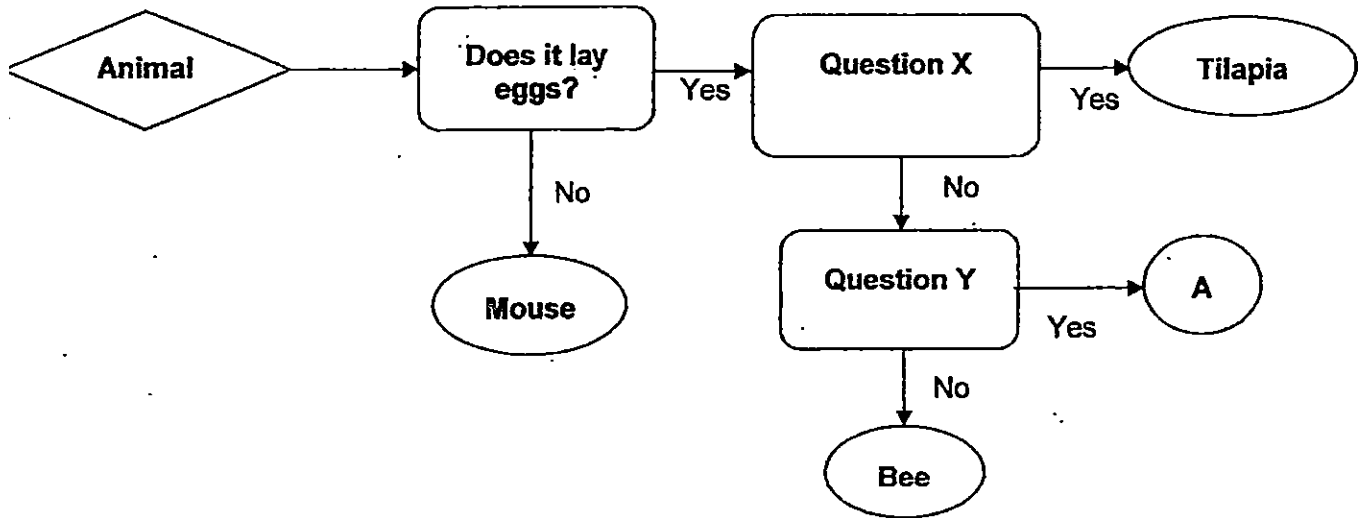
(c) The animals in Group B and C can be classified in another way from your answer in (a). Give a sub-suitable heading for each group. [1]

Group B	
Group C	

(Go on to the next page)

SCORE	3
-------	---

32. Study the flowchart below.



- (a) Which of the following best represents Questions X and Y?
Write the letters X and Y in the correct boxes below.

[1]

Question	Letter
Does it have legs?	
Does it suckle its young?	
Does it breathe through gills?	

- (b) Based on the flowchart given, state one similar characteristic between the tilapia and the bee.

[1]

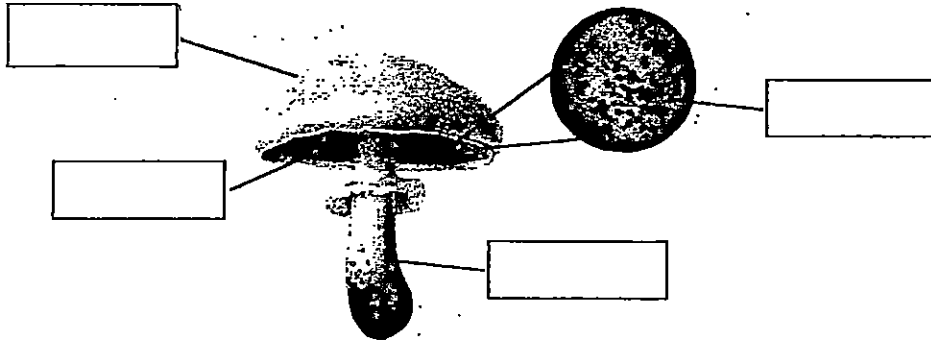
- (c) Give an example of Animal A

[1]

(Go on to the next page)

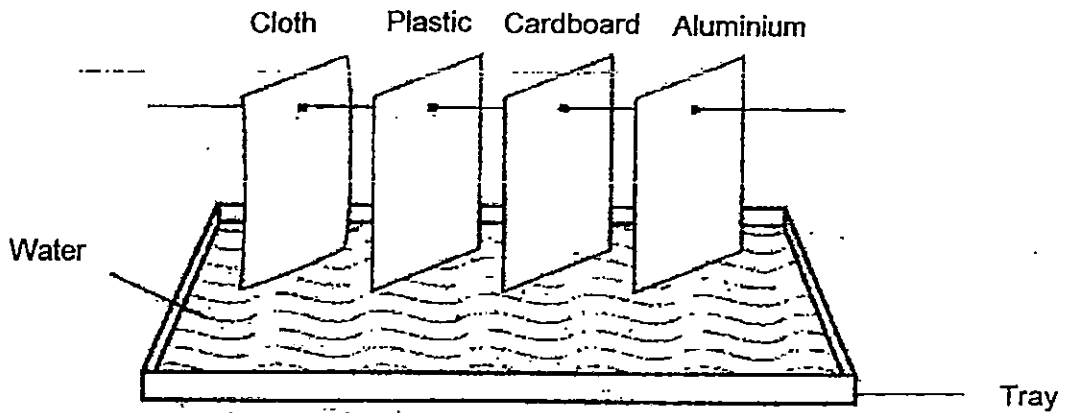
SCORE	3
-------	---

33. (a) Label the parts of a mushroom in the boxes in the diagram below. [2]



- (b) State 3 conditions that must be present for fungi to grow. [1]

34. Pete conducted an experiment by hanging 4 strips of different materials. He allowed the ends of each strip to be soaked in a tray with water.



- (a) Which material(s) will absorb water? [1]

- (b) What property of materials is Pete trying to find out in his experiment? [1]

- (c) State a variable he must keep the same for Pete's experiment to be fair. [1]

(Go on to the next page)

SCORE	/
	6

35. Alex wanted to make a hammock for his dad as shown below. A hammock is commonly used for people to lie on.

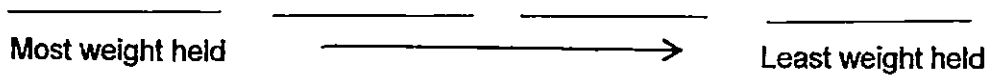


Hammock

For his experiment, Alex chose four materials to make hammocks of the same size and placed bags of rocks on them. He recorded the total weight of rocks each hammock could hold before it started to tear.

Materials	Total weight of rocks (kg) hammock could hold before it tore
M	45
N	10
O	20
P	100

- (a) Based on the table above, order the materials, M, N, O and P, based on the weight they could hold before tearing. Start with the material that could hold the most weight to the least weight. [1]

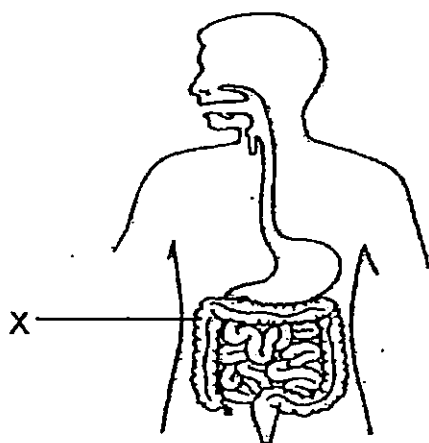


- (b) Which material, M, N, O or P is the most suitable for making a hammock for Alex's dad to sleep on? Explain your answer based on the property of the material that Alex was testing for his experiment. [1]

(Go on to the next page)

SCORE	2
-------	---

36. Study the diagram of the human digestive system below carefully.



(a) Name the part where digestion begins. [1]

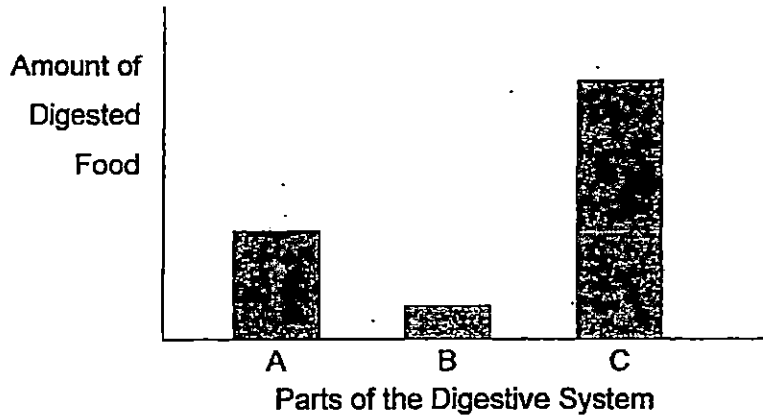
(b) What is the function of X? [1]

(c) What happens to the food after it has been completely digested? [1]

(Go on to the next page)

SCORE	3
-------	---

37. Jack ate 2 slices of bread for breakfast. A, B and C are parts of the digestive system where digestive juices are present.



- (a) Based on the graph above, name the parts, A, B and C, of the digestive system where the digestive juices are found. [1½]

Parts of the Digestive System	
A	
B	
C	

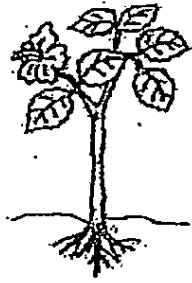
- (b) Based on the graph above and description of the parts of the digestive system below, match the descriptions to parts A, B and C. Write the letters, A, B and C in the correct boxes. [1½]

Description	Part
Digestion of food is completed.	
Food is chewed into smaller pieces.	
Food is digested further and mixed with other digestive juices.	

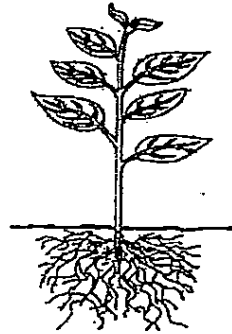
(Go on to the next page)

SCORE	3
-------	---

38. Jason planted two plants, G and H in the ground as shown below.



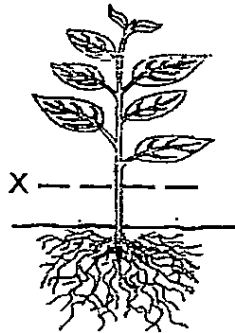
Plant G



Plant H

- (a) Which plant, G or H, will be more difficult to pull out from the ground? Give a reason for your answer. [1]

Jason decided to transfer Plant H into a pot. He cut the plant at point X as shown below and transferred the upper part of the plant into a pot.



Plant H

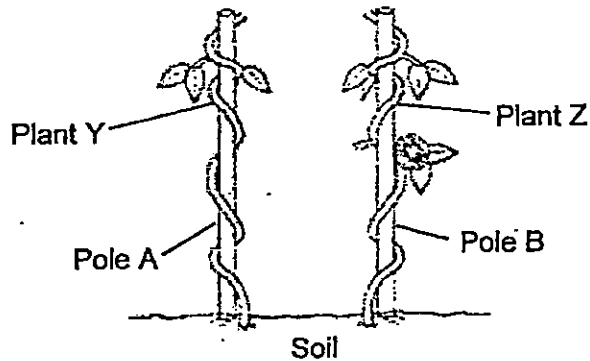
- (b) He placed the pot in his garden and watered it daily. A few days later, he observed that Plant H started to wilt. Explain why. [1]

- (c) Besides your answer in (b), state another function of the roots of a plant. [1]

(Go on to the next page)

SCORE	
	3

39. In an experiment, Lionel planted two similar plants, Plant Y and Plant Z in the garden. He inserted two poles, A and B, pole A near Plant Y and pole B near Plant Z. After two months, he observed that Plant Y and Z grew around the poles as shown below.



- (a) Explain clearly how the poles help Plants Y and Z to grow. [1]

- (b) State one variable that he should keep the same for a fair experiment. [1]

Lionel then removed Pole A. After 3 days, he observed that Plant Y started to climb Pole B.

- (c) Based on his observation, state one characteristic of living things displayed by Plant Y. [1]

End of Paper

SCORE	3
-------	---



EXAM PAPER 2015

LEVEL : PRIMARY 3

SCHOOL : ANGLO CHINESE SCHOOL (JUNIOR)

SUBJECT : SCIENCE

TERM : SA2

Q 1	Q 2	Q 3	Q 4	Q 5	Q 6	Q 7	Q 8	Q 9	Q 10
2	2	3	2	1	4	2	3	1	1
Q 11	Q 12	Q 13	Q 14	Q 15	Q 16	Q 17	Q 18	Q 19	Q 20
3	2	2	4	3	2	4	1	4	1
Q21	Q22	Q23	Q24	Q25					
3	2	4	1	3					

Q26a. The caterpillar was lack of air, food and water .

Q26b. Alex could have put food and water in the jar and also a few small holes on the paper .

Q27a. With black squares – A E C Q27a. With black circles – D B F

Q27b. Shapes

Q28a. It needs sunlight and does not bear fruits.

Q28b. P does not need sunlight but R needs. Q28c. (i) Q (ii) P

Q29a. Amount of water given. Q29b. Sunlight to grow.

Q29c. Plant T will die. It does not has its leaves to help it make food.

Q30a. Group M: Flowers Group N: Fruits

Q30b. One seed – Avocado / longan

Q30b. Many seeds – kiwi / papaya

Q30c. They are in bunches.

Q31a. They are classified to their outer coverings.

Q31b. Group A: Have feathers Group B: Have scales

Q31c. Group B – Lay eggs Group C : give birth

Q32a. Y / X Q32b. They lay eggs Q32c. Spiny anteater

Q33a. **SEE PICTURE - next page.** Q33b. It needs warmth, shades and moisture.

Q34a. Cloth and cardboard Q34b. It is the absorbency.

Q34c. The size of each material

Q35a. P, M, O, N Q35b. P. It is able to hold the most weight.

Q36a. Mouth Q36b. It absorbs the water from the undigested food.

Q36c. It will be digested further and mixed with other digestive juices.

Q37a. A-Stomach B- Mouth C-Small intestine Q37b. C, B, A

Q38a. Plant H - Its roots are spread all over.

Q38b. It has no roots to absorb the water and minerals from the ground.

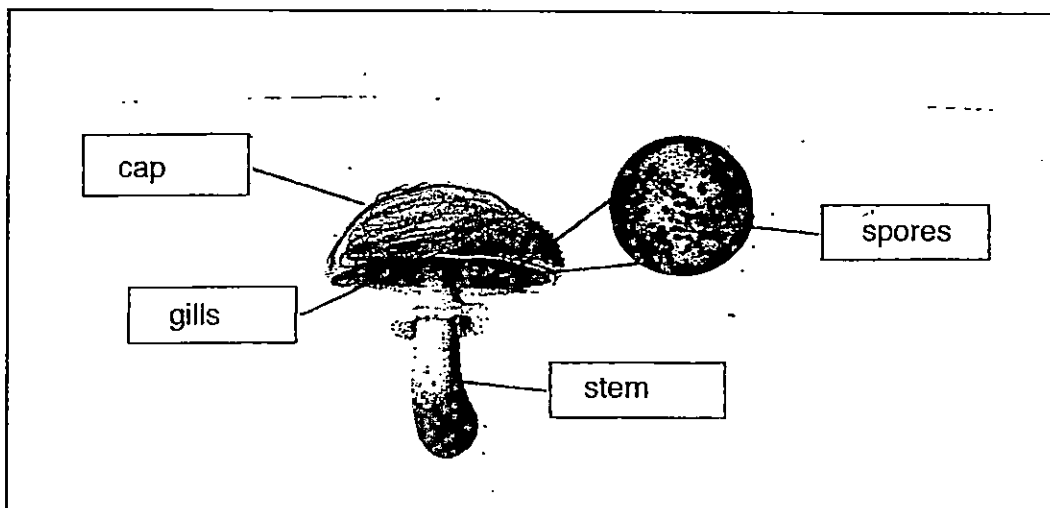
Q38c. It holds the plant firmly to the ground.

Q39a. The plant will climb onto the pole and get enough sunlight to make food.

Q39b. The amount of water.

Q39c. Living things can respond to changes.

233a



THE END