

Name: _____ ()

Class: Primary 3 _____

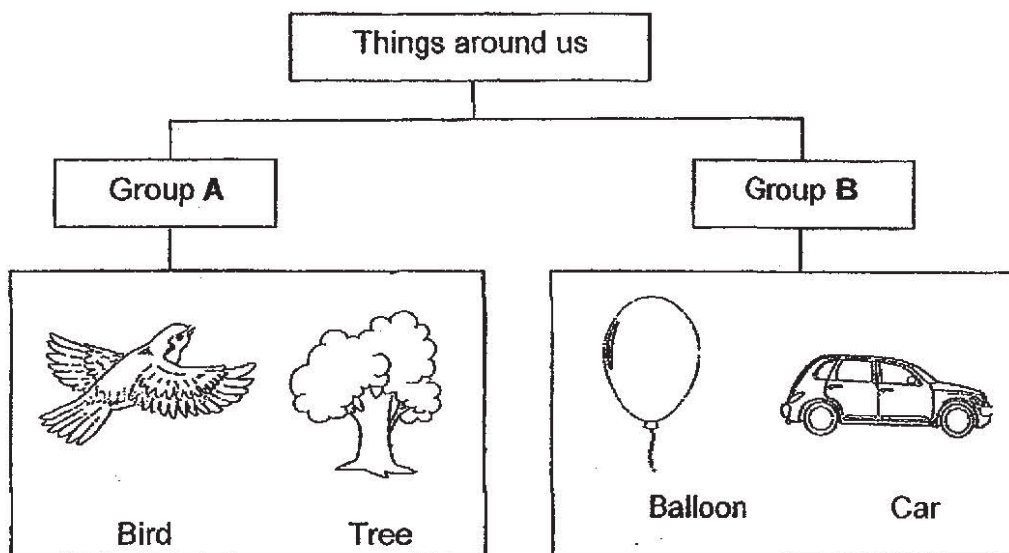
Duration: 30 min

Date: 17/05/2019 (Friday)

Section A (10 marks)

For each question 1 to 5, four options are given. One of them is the correct answer. Make your choice (1, 2, 3 or 4). Write the correct option in the brackets provided.

1. Study the classification chart below.

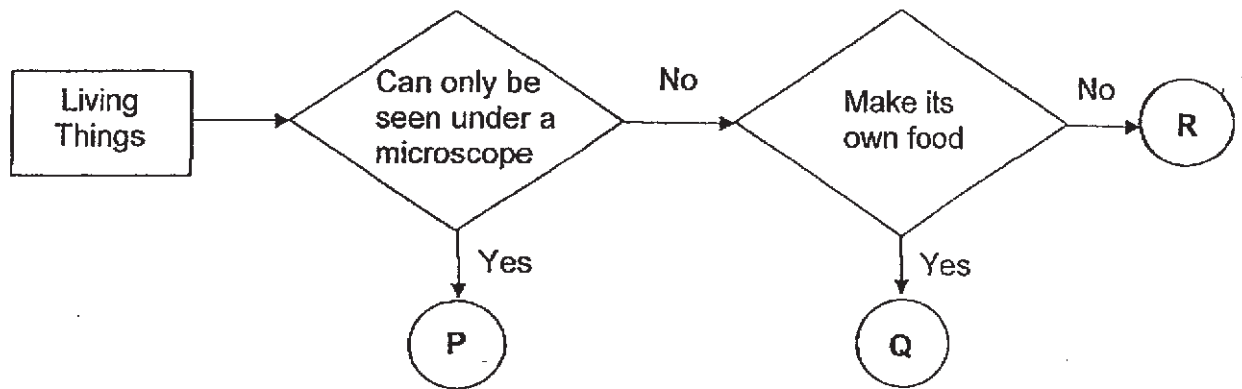


Which of the following are suitable headings for Group A and Group B?

	Group A	Group B
(1)	Cannot move by itself	Can move by itself
(2)	Cannot reproduce	Can reproduce
(3)	Can grow	Cannot grow
(4)	Does not respond to changes	Responds to changes

()

2. Study the flowchart below.



Which of the following could P, Q and R be?

	P	Q	R
(1)	Mushroom	Bacteria	Fern
(2)	Fern	Mushroom	Bacteria
(3)	Bacteria	Mushroom	Fern
(4)	Bacteria	Fern	Mushroom

()

3. Bala saw an animal on a television program and described it to his mother.

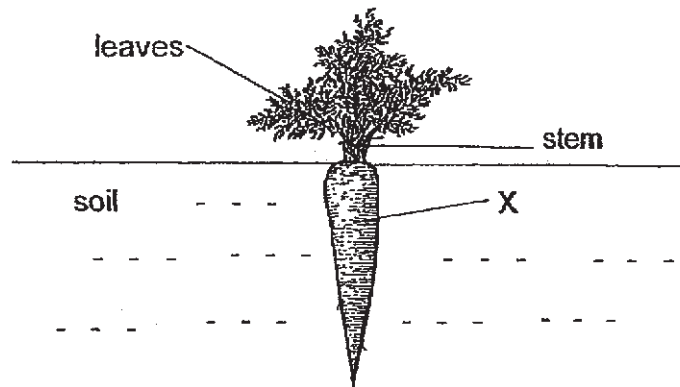
It lives on land.	It has scales as its outer covering.	It reproduces by laying eggs.
-------------------	--------------------------------------	-------------------------------

Which of the following animal groups could the animal belong to?

- (1) Mammal
- (2) Reptile
- (3) Bird
- (4) Fish

()

4. Look at the picture shown below.



X is found below the ground.

Which of the following is a function of the part labelled X?

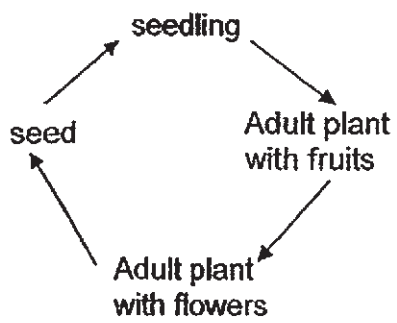
- A. It holds the plant firmly to the ground.
- B. It traps light and makes food for the plant.
- C. It stores food made by the leaves of the plant.
- D. It absorbs water and mineral salts from the soil.

- (1) A and B only
- (2) A and C only
- (3) C and D only
- (4) A, C and D only

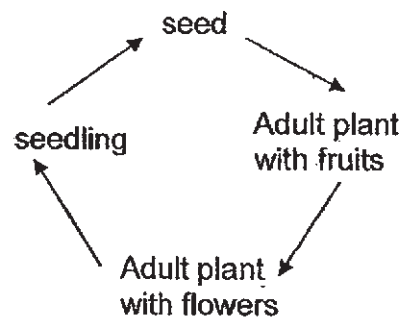
()

5. Which of the following shows the correct life cycle of a flowering plant?

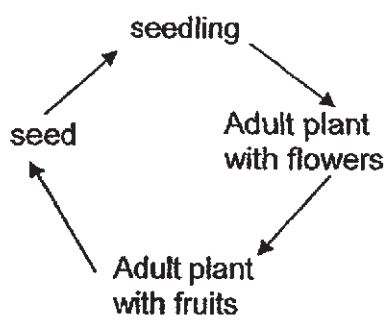
(1)



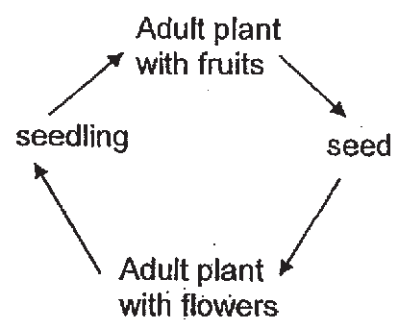
(2)



(3)



(4)



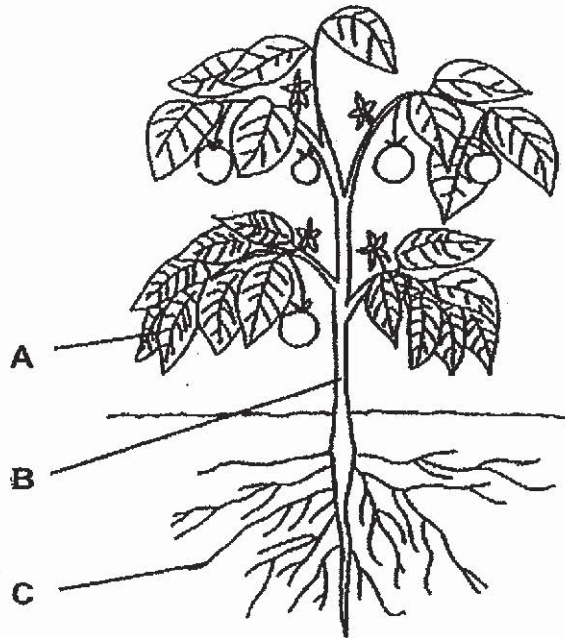
()

~ End of Section A ~

Section B (10 marks)

For questions 6 to 9, write your answers in the spaces provided.

6. The picture below shows a flowering plant.



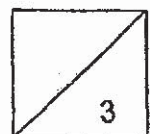
(a) Name the following parts of the plant shown above. [1m]

Part B : _____

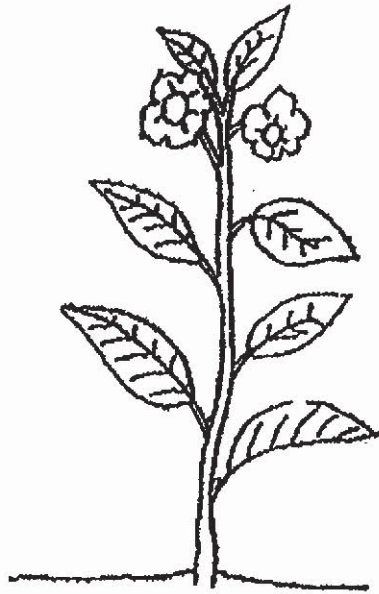
Part C : _____

(b) State one function of the part labelled A. [1m]

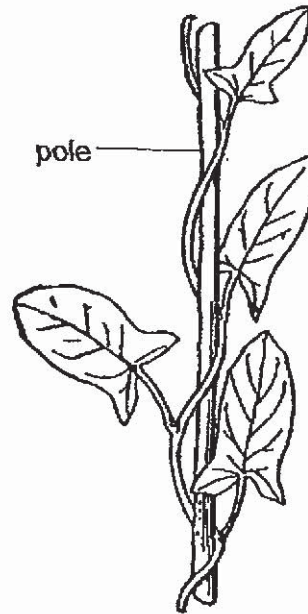
(c) What will happen to the plant after one week if the part labelled C is completely removed? Explain your answer. [1m]



7. John observed Plant X and Plant Y as shown below and said that Plant X can stand upright on its own while Plant Y has a weak stem.



Plant X



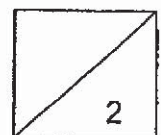
Plant Y

- (a) Why did John say that Plant Y has a weak stem?

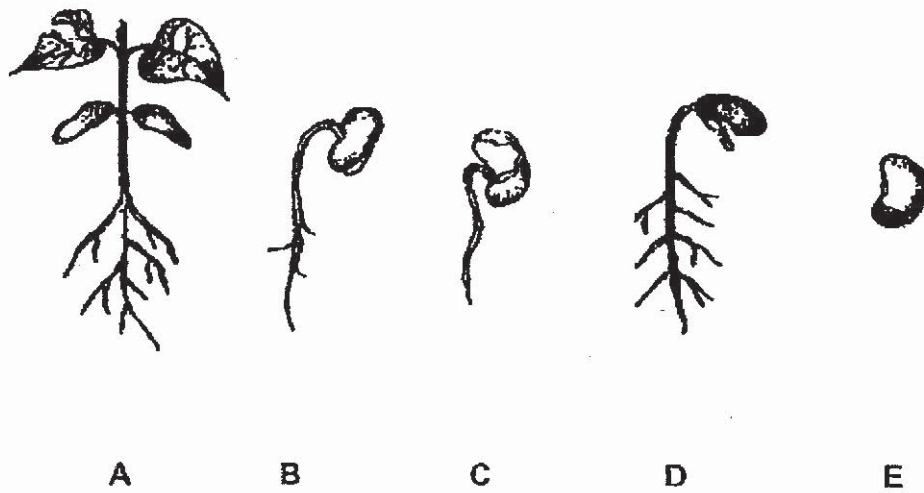
[1m]

- (b) Plant Y grows upwards. Explain how this helps Plant Y to make food.

[1m]



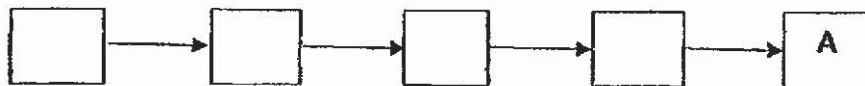
8. The diagrams below show the different stages in the growth of a bean plant.



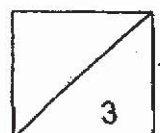
(a) Arrange the stages of development of the bean plant in the correct order by writing the letters B, C, D and E in the boxes below.

The last stage has been identified for you.

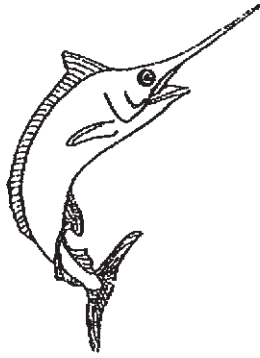
[2m]



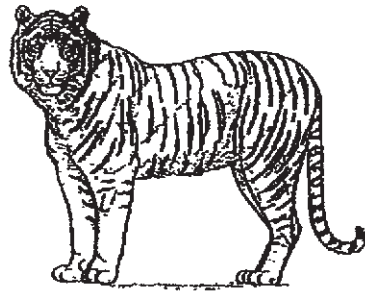
(b) At which stage (A, B, C, D or E) will the plant need sunlight? Explain your answer. [1m]



9. Look at the pictures of the two animals below.



Fish



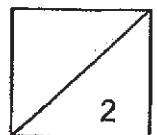
Mammal

(a) Name the outer covering of the two animals shown above. [1m]

Fish: _____

Mammal: _____

(b) State a difference in how they reproduce. [1m]



~ End of Paper ~

Page 8 of 8

SCHOOL : RIVER VALLEY PRIMARY SCHOOL
LEVEL : PRIMARY 3
SUBJECT : SCIENCE
TERM : 2019 SA1

BOOKLET A

Q 1	Q2	Q3	Q4	Q5
3	4	2	4	3

BOOKLET B

Q6)	a)Part B : Stem Part C : roots b)Part A make food for the plant. c)The plant will die. Part C cannot absorb water and mineral salts for the plant.					
Q7)	a)Plant Y need a pole to support the plant. b)Plant Y grows upwards because it needs to get sunlight to make food.					
Q8)	a) <table style="margin-left: 40px;"><tr><td style="border: 1px solid black; padding: 5px;">E</td><td style="border: 1px solid black; padding: 5px;">C</td><td style="border: 1px solid black; padding: 5px;">B</td><td style="border: 1px solid black; padding: 5px;">D</td><td style="border: 1px solid black; padding: 5px;">A</td></tr></table> b)A.A have leaves to make food.	E	C	B	D	A
E	C	B	D	A		
Q9)	a)Fish : Scales Mammal : hair b)The fish reproduce by laying eggs but mammal reproduce by giving birth to its young.					