



**CHIJ TOA PAYOH (PRIMARY)  
2022 WEIGHTED ASSESSMENT 2**

NAME

REGISTER  
NUMBER

CLASS

**SCIENCE PAPER**

Primary Three

**6 May 2022****30 minutes****INSTRUCTIONS TO CANDIDATES**

1. Write your name, class and register number clearly above.
2. Do not turn over this page until you are told to do so.
3. Follow all instructions carefully.

SECTION	SUB-TOTAL	MARKS OBTAINED
A	10	
B	10	
<b>TOTAL</b>	<b>20</b>	

Parent's / Guardian's Signature: \_\_\_\_\_

---

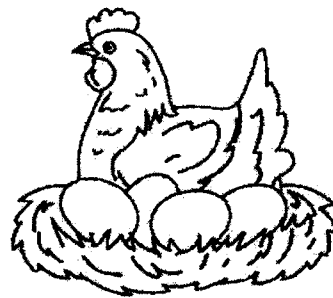
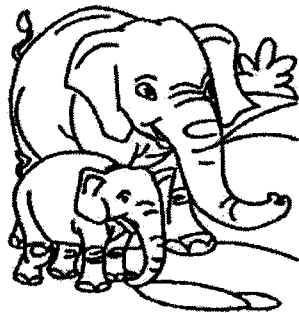
This document consists of [8] printed pages including cover page



**Section A: Multiple Choice Questions (10 marks)**

For each question from 1 to 5, four options are given. One of them is the correct answer. Make your choice (1, 2, 3 or 4) and write the answer in the bracket provided.

1. The pictures show some animals.



Which characteristic of living things is shown in the pictures?

- (1) Living things reproduce.
- (2) Living things respond to changes.
- (3) Living things need air, food and water.
- (4) Living things move from place to place by themselves.

(     )



2. The table shows Minah's answers to some questions about ferns.

Question		Answer
A	Can it reproduce?	Yes
B	Does it have seeds?	Yes
C	Does it have flowers?	No
D	Does it make its own food?	No

Which questions were answered correctly?

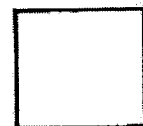
- (1) A and B only
- (2) A and C only
- (3) B and D only
- (4) C and D only

( )

3. Which statement is true about bacteria?

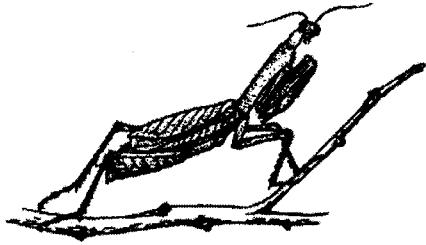
- (1) They are fungi.
- (2) They can grow.
- (3) They can make their own food.
- (4) They can be seen without using the microscope.

( )



4

4. Bob saw organisms X and Z in the garden. He wanted to find out if both organisms are insects.



organism X



organism Z

Which of the following would help him to conclude whether the organisms are insects?

A	Count the number of legs.
B	Look for wings on the bodies.
C	Count the number of body parts.
D	Observe the type of food they eat.

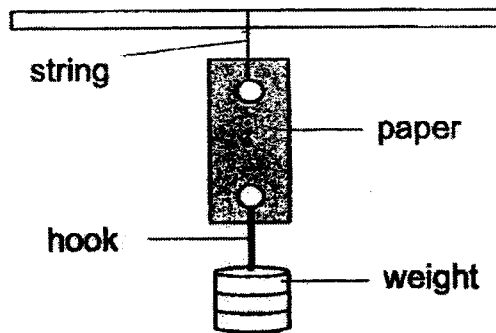
- (1) A and B only  
 (2) A and C only  
 (3) B and D only  
 (4) C and D only

( )



5

5. Mary wanted to find out the strength of three different types of papers, P, Q and R. The papers are of the same size.



She added one weight at a time to the hook until each paper started to tear. The results are as shown.

Type of paper	Number of weights
P	7
Q	4
R	6

Based on the results, arrange the three types of paper from the strongest to the weakest.

- (1) Q, R, P
- (2) Q, P, R
- (3) P, R, Q
- (4) P, Q, R

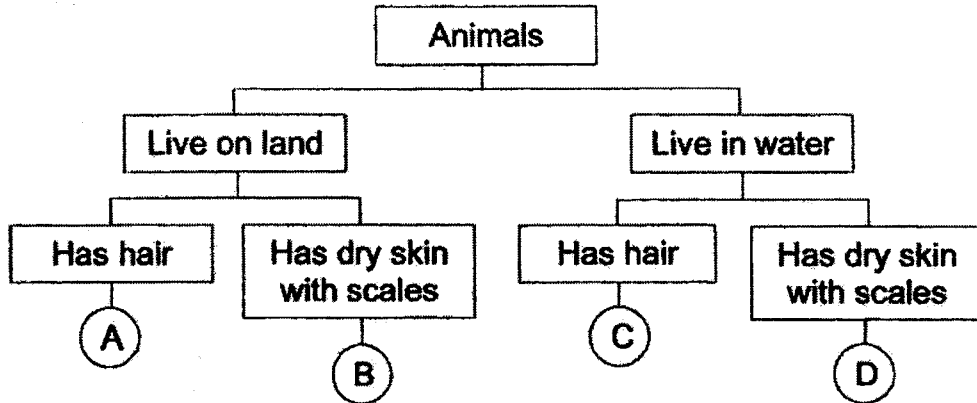
( )



**Section B: Open-Ended Questions (10 marks)**

**Write your answers for questions 6 to 8 in the spaces provided. The mark is shown in the bracket [ ] at the end of each question.**

6. The diagram shows the classification of some animals based on their characteristics.



- (a) Based on the diagram, state one similar characteristic between animals A and B. [1]

---

- (b) Based on the diagram, state two different characteristics between animals B and C. [2]

Difference 1: \_\_\_\_\_  
 \_\_\_\_\_

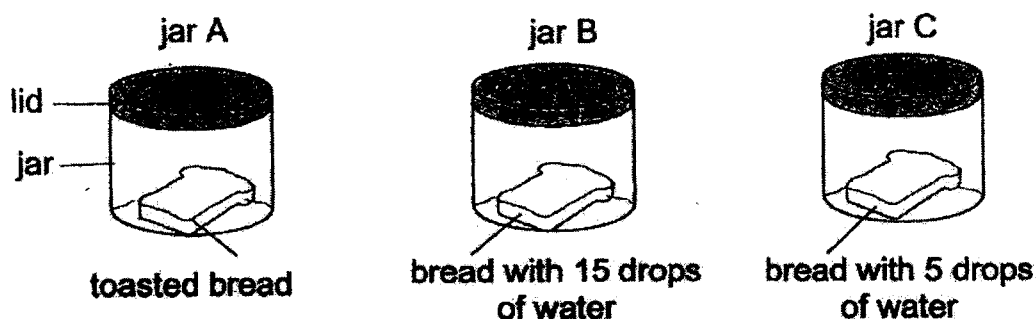
Difference 2: \_\_\_\_\_  
 \_\_\_\_\_

- (c) Circle the correct answer. [1]

Animals B and D are ( amphibians / mammals / reptiles ).

7

7. Ken cut a loaf of bread into three pieces of the same size. He placed each piece into a jar with lid. The three identical jars were placed in the Science room.



After a few days, Ken made the following observations.

Jar	Presence of mould on the bread
A	No
B	Yes
C	Yes

- (a) Give a reason why there was no mould growing on the bread in jar A. [1]

---

- (b) In which jar, B or C, was the bread likely to have more mould growing on it? Give a reason for your answer. [1]

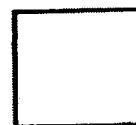
---



---

- (c) Mould reproduces the same way as mushroom. How do both of them reproduce? [1]

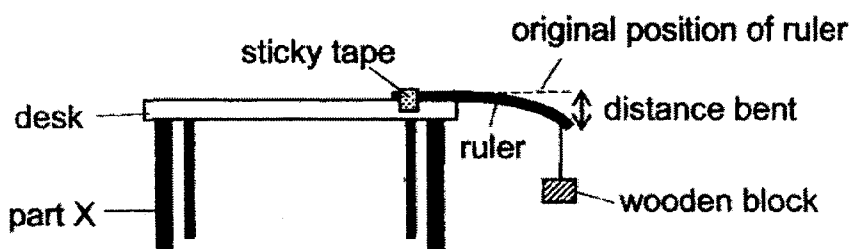
---





8

8. Abby taped a ruler made of material A on the edge of a desk. When a wooden block was hung at one end of the ruler, the ruler bent as shown.



Abby repeated the experiment with two other rulers made of different materials B and C. She measured the distance bent by each ruler with the block hanging to it. The results are as shown.

Material	Distance the material bent (cm)
A	12
B	0
C	5

- (a) Circle the correct answer. [1]

Material A is ( less / more ) flexible than material C.

- (b) Which of the materials, A, B or C, should Abby use to make part X of the desk? Give a reason for your answer. [1]

---



---

- (c) Besides the property mentioned in (b), name another property of material that part X should have so that Abby could place a pile of heavy books on the desk. [1]

---

- End of Paper -





YEAR : 2022  
 LEVEL : PRIMARY 3  
 SCHOOL : CHIJ PRIMARY (TOA PAYOH)  
 SUBJECT : SCIENCE  
 TERM : WEIGHTED ASSESSMENT 2

Q1	1	Q2	2	Q3	2	Q4	2	Q5	3
----	---	----	---	----	---	----	---	----	---

Q6	(a)	Both animals A and B live on land.
	(b)	Difference 1: Animal C lives in water but animal B lives on land. Difference 2: Animal B has dry skin with scales but animal C has hair
	(c)	*Circle* reptiles
Q7	(a)	There was no mould growing in the bread in jar A as there was no water for the mould to grow.
	(b)	B. There is more water for the mould to grow.
	(c)	They both reproduce by spores.
Q8	(a)	*Circle* more
	(b)	Material B. It cannot bend.
	(c)	Strength

3  
END

