



MAHA BODHI SCHOOL
2024 SCIENCE REVIEW 1
PRIMARY THREE

Name : _____ ()

Date : 24 April 2024

Class : Primary 3 _____

Duration : 40 min

Marks : / 30

Parent's signature : _____

Section A : [8 x 2 marks = 16 marks]

For each question from 1 to 8, four options are given. One of them is the correct answer. Make your choice (1, 2, 3 or 4). Write your answer in the bracket.

1. Adam planted a green bean and observed it for two weeks. He recorded his observations in a table below.

day 0	week 1	week 2
		

Based on the observation above, which of the following characteristics of living things did he observe?

- (1) Living things grow.
- (2) Living things reproduce.
- (3) Living things respond to changes.
- (4) Living things need air, food, and water to survive.

()

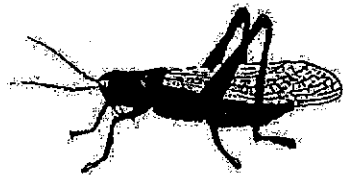
2. Which of the following statements is true for all plants?

- (1) All plants are green.
- (2) All plants bear fruits.
- (3) All plants make their own food.
- (4) All plants reproduce by spores.

()

Marks : / 4

3. Which of the following is a common characteristic of an insect and an amphibian?



Insect



amphibian

- (1) They live on land only.
 (2) They are warm-blooded.
 (3) They reproduce by laying eggs.
 (4) They have the same type of body covering.

()

4. The diagram below shows animal E with webbed feet.



The table below shows how animals can be grouped.

	Gives birth	Lays eggs
Can swim	A	B
Cannot swim	C	D

Which letter A, B, C, or D best represents animal E in the table above?

- (1) A
 (2) B
 (3) C
 (4) D

()

Marks :

/ 4

5. Which of the following statements about fungi and bacteria are true?

- A. They can reproduce.
- B. They can be useful to us.
- C. All of them are microorganism.
- D. They do not need food to survive.

- (1) A and B only
- (2) C and D only
- (3) B and D only
- (4) A and C only

()

6. Study the table below.

A (✓) shows that the characteristic is present while a (X) shows that the characteristic is not present.

Characteristics	Living things			
	E	F	G	H
has spore bags	✓	✓	X	X
can move from one place to another	X	X	X	✓
can make its own food	✓	X	✓	X

Which of the organisms above, E, F, G or H, represents a flowering plant?

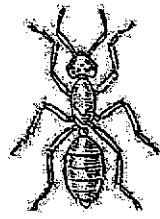
- (1) E
- (2) F
- (3) G
- (4) H

()

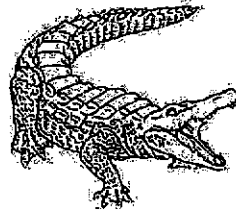
Marks :

14

7. Study the classification table and the three animals, J, K and L.



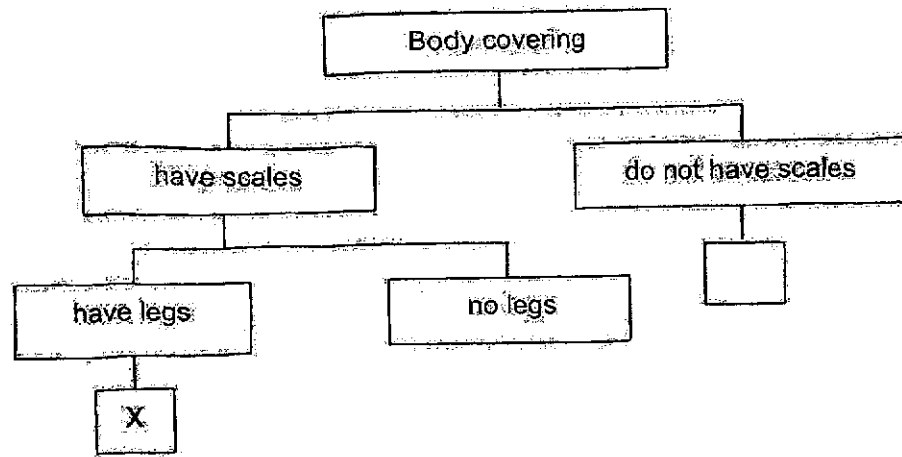
Animal J



Animal K



Animal L



Which of the following shows the correct classification of animals J, K and L in boxes X and Y?

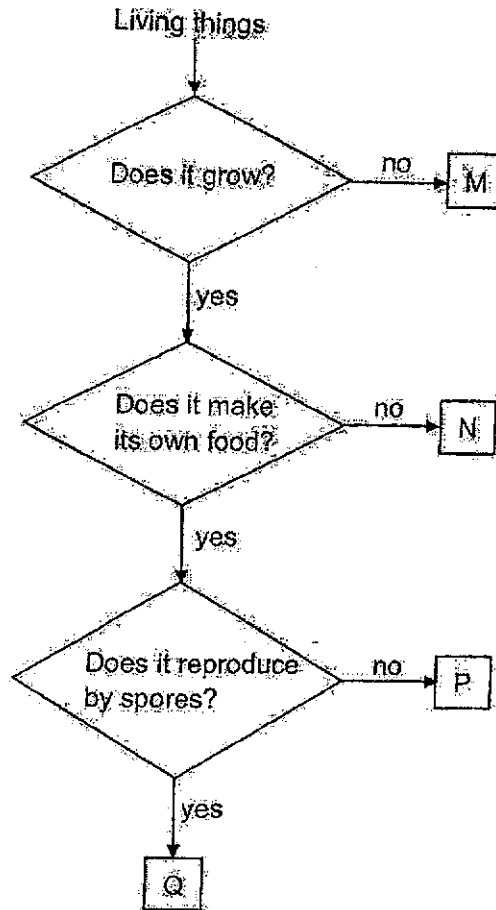
	X	Y
(1)	L	J
(2)	K	J
(3)	J	L
(4)	K	L

()

Marks :

12

8. Study the flowchart below.



Which one of the living things above, M, N, P or Q, represents a fungi?

- (1) M
- (2) N
- (3) P
- (4) Q

()

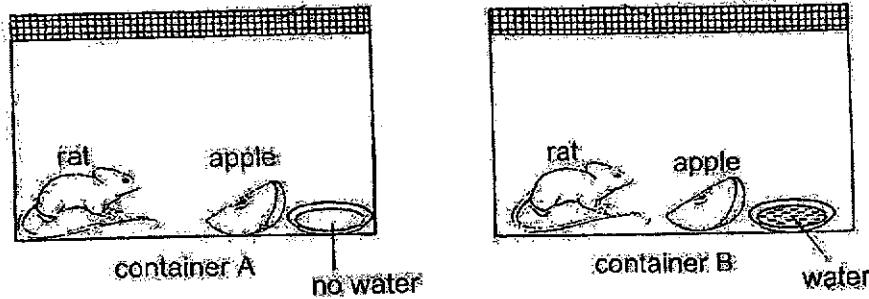
Marks : 12

SECTION B: [14 marks]

For questions 9 to 12, write your answers in this booklet.

The number of marks available is shown in the brackets [] at the end of each question or part-question.

9. The diagrams below show two containers, A and B containing a rat each. covers with holes.



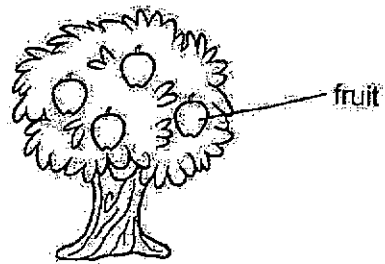
(a) Why were covers with holes used for the containers? [1]

(b) Someone knocked on the container. During this time, the rats jumped and moved away from the knocking. What characteristics of living things did the rats show? [1]

(c) The rat in one of the containers died after 1 week. In which container, A or B, did the rat die? Explain your answer. [2]

Marks: 14

10. Jason went for a walk along the park and spotted a tree. He drew the tree as shown below.



- (a) State which group of plants the tree above belongs to. [1]

- (b) Give a reason for your answer in (a). [1]

- (c) State the difference between how the tree and a fern reproduce. [1]

Marks:

--

 / 3

11. Raine observed an animal during her trip to the zoo and made the following statements about the animal.

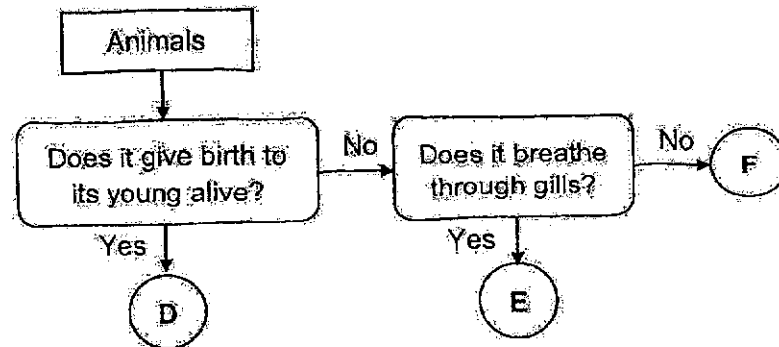
- Animal C lives on land.
- Animal C is cold-blooded.
- Animal C has a dry scaly skin as its outer covering.

(a) (i) Which animal group does animal C belong to? [1]

Animal group: _____

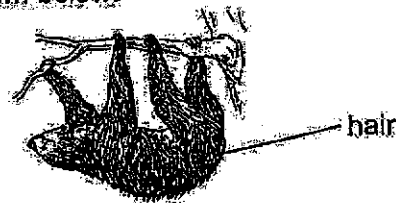
(ii) State one other characteristic that animals in the same animal group as animal C have. [1]

Study the flowchart below.



(b) (i) Based on the flowchart, state one difference between animals E and F. [1]

(ii) Observe the animal shown below.

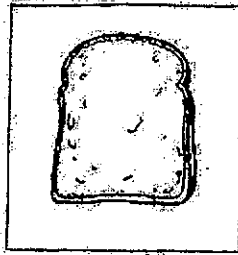


Based on your observations, which animal, D, E or F would this animal most likely be? [1]

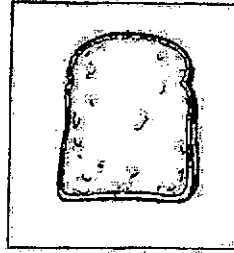
Marks:

14

12. Raful conducted an experiment as shown below. There were two similar bread slices, S and T. He sprinkled some water on bread S. Then, he placed both breads in a bag and left them next to a window.

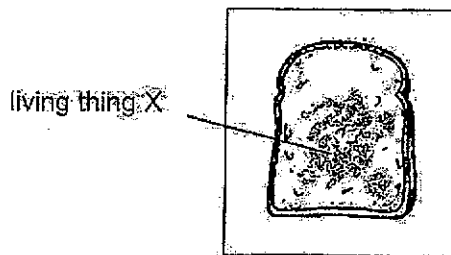


Bread S with water sprinkled



Bread T with water removed

After a week, he spotted grey living thing X growing on one of the breads as shown below.



- (a) What is the grey living thing X? [1]

- (b) Which bread S or T would have living thing X growing on it? [1]

- (c) Give a reason why living thing X grew on one bread and not the other. [1]

Marks:

/ 3

~ END OF PAPER ~

SCHOOL : MAHA BODHI SCHOOL
 LEVEL : PRIMARY 3
 SUBJECT : SCIENCE
 TERM : 2024 WA1

Q1)	1
Q2)	3
Q3)	3
Q4)	2
Q5)	1
Q6)	4
Q7)	2
Q8)	2
Q9)	<p>a) To allow air to enter for the rat to breathe.</p> <p>b) The rats showed that living things respond to changes.</p> <p>c) The rat died in container A. Living things need water to survive and as there was no water in container A the rat in container A died.</p>
Q10)	<p>a) The tree above belongs to the flowering plant group.</p> <p>b) If the tree above is a flowering plant, the tree would have flowers that will turn into fruits and as the tree above has fruits, the tree is a flowering plant.</p> <p>c) The tree reproduces by seeds while a fern reproduces by spores.</p>
Q11)	<p>a)i) Reptile ii) They reproduce by laying eggs. / They breathe through lungs.</p> <p>b)i) Animal E breathes through gills while animal F does not breathe through gills. ii) This animal would most likely be animal D.</p>
Q12)	<p>a) The grey living thing X is bread mould.</p> <p>b) Bread S would have living thing X.</p> <p>c) Bread S has water but T does not have water. Mould needs water to grow.</p>

