

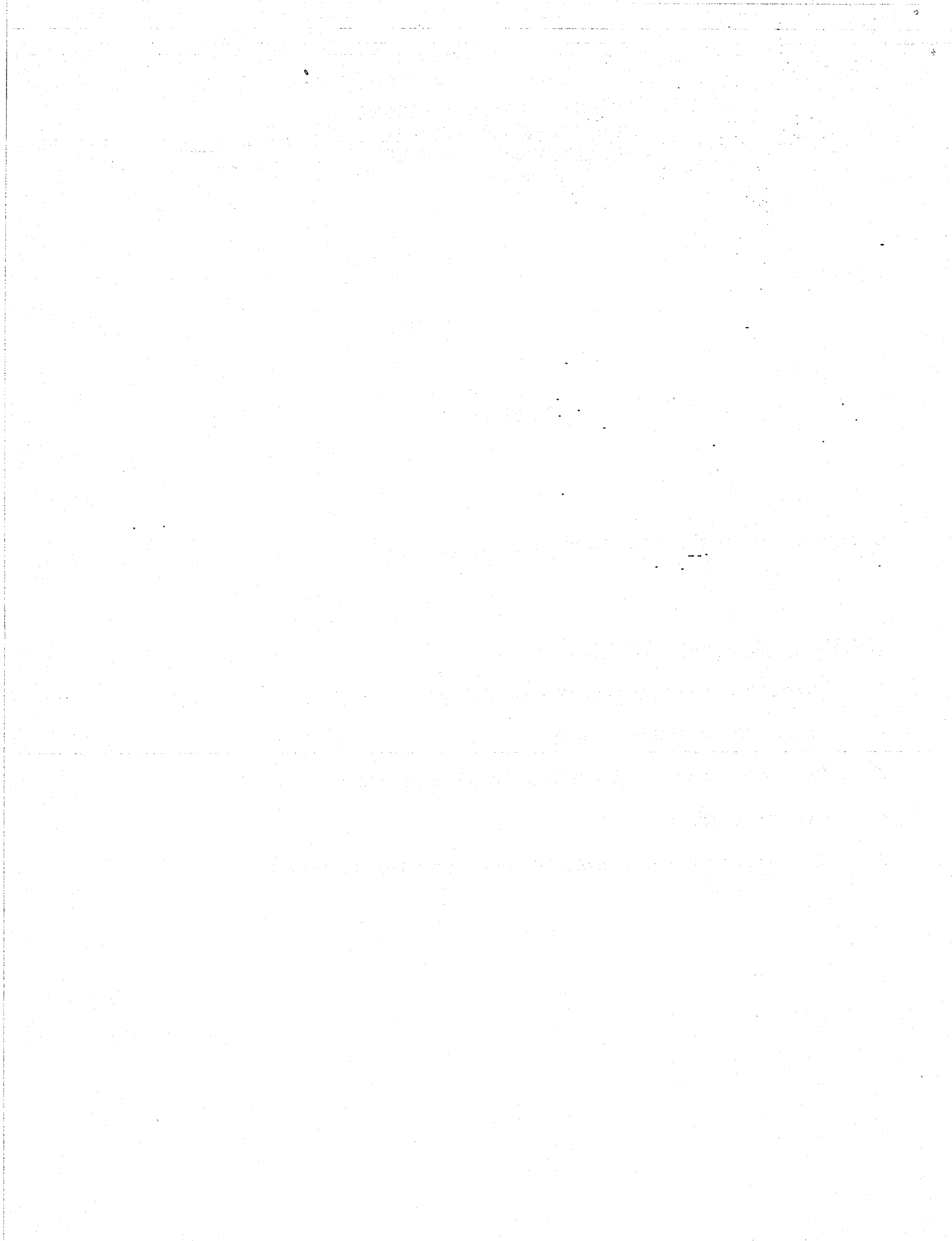
**RIVER VALLEY PRIMARY SCHOOL
PRELIMINARY EXAM / 2018
ENGLISH LANGUAGE PAPER 2
PRIMARY 6**

Booklet A

Duration of Paper (Booklets A and B) : _____ h _____ min

INSTRUCTIONS TO CANDIDATES

1. Do not turn over this page until you are told to do so.
2. Follow all the instructions carefully.
3. This booklet consists of 28 questions (Questions 1 to 28).
4. Answer all questions.
5. Shade your answers in the Optical Answer Sheet (OAS) provided.



For each question from 1 to 10, four options are given. Choose the correct answer and shade the oval (1, 2, 3 or 4) on the Optical Answer Sheet.
(10 marks)

1. The teacher made Keith _____ his project assignment before allowing him to go home.

- (1) complete
- (2) completes
- (3) completed
- (4) completing

2. Susan is very reserved. She hardly ever goes to any parties, _____?

- (1) is it
- (2) isn't it
- (3) does she
- (4) doesn't she

3. _____ for a short break, the construction workers have been working continuously for eight hours.

- (1) Apart
- (2) Except
- (3) Without
- (4) Besides

4. The enraged driver, who was yelling at a careless biker, seemed oblivious _____ the attention he was drawing to himself.

- (1) to
- (2) at
- (3) by
- (4) with

5. "Has anyone here ever _____ in a hot air balloon before?" the tour agent asked the group of tourists.

- (1) fly
- (2) flew
- (3) flies
- (4) flown

6. The soccer fan was worked _____ over the referee's decision.
His face was all flushed as he exclaimed how unfair it was.

- (1) in
- (2) up
- (3) off
- (4) out

7. Mrs Lee, together with her two daughters, _____ tennis for two hours
every Sunday morning.

- (1) play
- (2) plays
- (3) has played
- (4) have played

8. The committee _____ having a meeting. The executive members were
discussing many important issues.

- (1) is
- (2) are
- (3) was
- (4) were

9. According to the schedule, the mechanics _____ the repair of the
lorries.

- (1) might complete
- (2) should complete
- (3) might have completed
- (4) should have completed

10. The traffic police _____ taking drastic measures as the number of
drivers caught speeding _____ increased twofold.

- (1) is...has
- (2) is...have
- (3) are...has
- (4) are...have

For each question from 11 to 15, four options are given. Choose the correct answer and shade the correct oval (1, 2, 3 or 4) on the Optical Answer Sheet. (5 marks)

11. Every year, Mr Brown's orchard _____ a rich harvest. He makes a lot of money from the sale of the apples.

- (1) reaps
- (2) yields
- (3) obtains
- (4) achieves

12. Many of the offshore islands are _____ now that we have built the bridges.

- (1) available
- (2) obtainable
- (3) accessible
- (4) convenient

13. Although Gordon spends a lot of time _____ in libraries, he rarely borrows any of the books or magazines.

- (1) foraging
- (2) browsing
- (3) scanning
- (4) skimming

14. The campus was totally flooded after the heavy downpour. We had to _____ through knee-deep water.

- (1) glide
- (2) wade
- (3) amble
- (4) saunter

15. Frank was arrested for setting fire to his own warehouses for insurance money. He was charged with _____.

- (1) arson
- (2) assault
- (3) homicide
- (4) vandalism

For each question from 16 to 20, choose the word(s) closest in meaning to the underlined word(s). Shade your answer (1, 2, 3 or 4) on the Optical Answer Sheet. (5 marks)

The bargaining had ended for Akihito.

He reached forward and 16) took away quickly the pearl from the diver's hand. He then wrapped it in the deerskin that he had brought along and later 17) thrust it inside his coat.

The diver in his dripping suit said, "I'm a fool. I know but my first offer 18) stands. I still offer one thousand US dollars. What are you doing?" he asked, as Akihito thrust the pearl out of sight.

Now the dealers 19) took a quick look at one another. They knew they had played too hard.

They knew they would be 20) severely dealt with for their failure, and the diver said quickly, "I might go to fifteen hundred!"

Adapted from the 'The Pearl' by John Steinback

16. (1) lifted
(2) pulled
(3) dragged
(4) snatched
17. (1) hid
(2) kept
(3) placed
(4) shoved

18. (1) prefers
(2) prevails
(3) precedes
(4) presumes

19. (1) stared
(2) glanced
(3) gawked
(4) observed

20. (1) blamed
(2) disciplined
(3) counselled
(4) reprimanded

Study this article from a newsletter, Future Matters, and then answer questions 21 to 28.

Career Support Initiative Launched

Written by Desiree Soo

If you are a student, it is important to start thinking about the career pathway that you aim to take so that you can choose applicable courses to pursue. If you are a fresh graduate or mid-career jobseeker, it is critical that you make informed and well-thought-out decisions when managing your career pathway.

In a rapidly changing world where new jobs are being created and old jobs are becoming obsolete at alarming rates, charting a career pathway may seem like a daunting task for many. Nevertheless, failing to plan is planning to fail, and the good news is, a career support initiative, "My Career", was launched on 10 August 2018 to help current and future workers like you meet your career aspirations and secure quality jobs at different stages of life. Different aspects of the initiative will be rolled out over the next few months. **In the pipeline**

- a locally-developed Career Match Test to help students and jobseekers identify suitable career options based on their personalities and interests
- attachments which give selected students opportunities to work in established companies for a few days during school holidays
- company visits which allow all students above 12 to observe how some of the top companies in Singapore operate as well as speak with their top management and employees
- Career Fair 2018 where participants can explore a wide selection of career options and gain valuable insights into current hiring trends

Do what you can to get where you want in life! Visit www.mycareer.sg for more information as well as to register for the various activities. The Career Match Test will be available online after its launch at Career Fair 2018.

Career Fair 2018

Date: 24 November to 2 December
Time: 8 a.m. to 10 a.m. and 5 p.m. to 10 p.m. (weekdays)
10 a.m. to 10 p.m. (weekends)
Venue: Learning Hub Exhibition Halls 1 and 2

Admission is free. Help yourself to complimentary refreshments when you visit on weekdays, subject to availability. Weekday visitors have to be 20 and above.



Role-play booths

Learn about different careers through realistic role-play!
Open on weekends only!

Career talks

Visit www.mycareer.sg/careerfair2018 for details of the talks lined up.

Information booths

Find out more about existing jobs and speak to professionals with years of working experience!

Job Hunt

Give this challenging game your best shot! Attractive prizes to be won!

Launch of the Career Match Test

Answer 50 questions about yourself and receive a free customised report which includes 10 recommended career options.

Recruitment booths

Take a look at what is available in the job market!

Is your company looking out for new blood and fresh ideas?

Register as a potential employer in the Career Match Test and reach a pool of talents who possess traits that your company values! Additionally, apply for a recruitment booth if your company has immediate vacancies to fill! Visit www.mycareer.sg/employers to provide information about your company and possible employment opportunities! Or, submit the online recruitment booth application form by 26 October.



For each question from 21 to 28, shade your answer (1, 2, 3 or 4) on the Optical Answer Sheet. (8 marks)

21. Which word did Desiree Soo use to tell readers that the speed at which jobs are changing is a cause for concern?

- (1) critical
- (2) alarming
- (3) daunting
- (4) important

22. Which of the following statements is correct about the 'My Career' initiative?

- (1) It is a monthly affair.
- (2) It caters to first-time jobseekers.
- (3) It has various aspects that will be introduced at different times.
- (4) It ensures that appropriate courses for students are organised.

23. Maggie wants to have a taste of working in a reputable company during the year-end school holidays. She should _____.

- (1) register for a company visit
- (2) try to get selected for an attachment
- (3) try to find out more from employees of top companies
- (4) Identify jobs that only require her to work for a few days

24. Which of the following statements about the Career Match Test is not true?

- (1) It was created in Singapore.
- (2) People will be able to take the test online.
- (3) Career options will be suggested to those who complete it.
- (4) The questions in the test are about the latest career options.

25. What is the similarity between the information and the recruitment booths?

- (1) They tell visitors about jobs they can consider taking up.
- (2) They get visitors to answer questions about themselves.
- (3) They allow visitors to share about their work experience.
- (4) They guide visitors in choosing suitable courses to pursue.

26. If Mrs Tan goes to Career Fair 2018 with her teenage children on Sunday, they can _____.

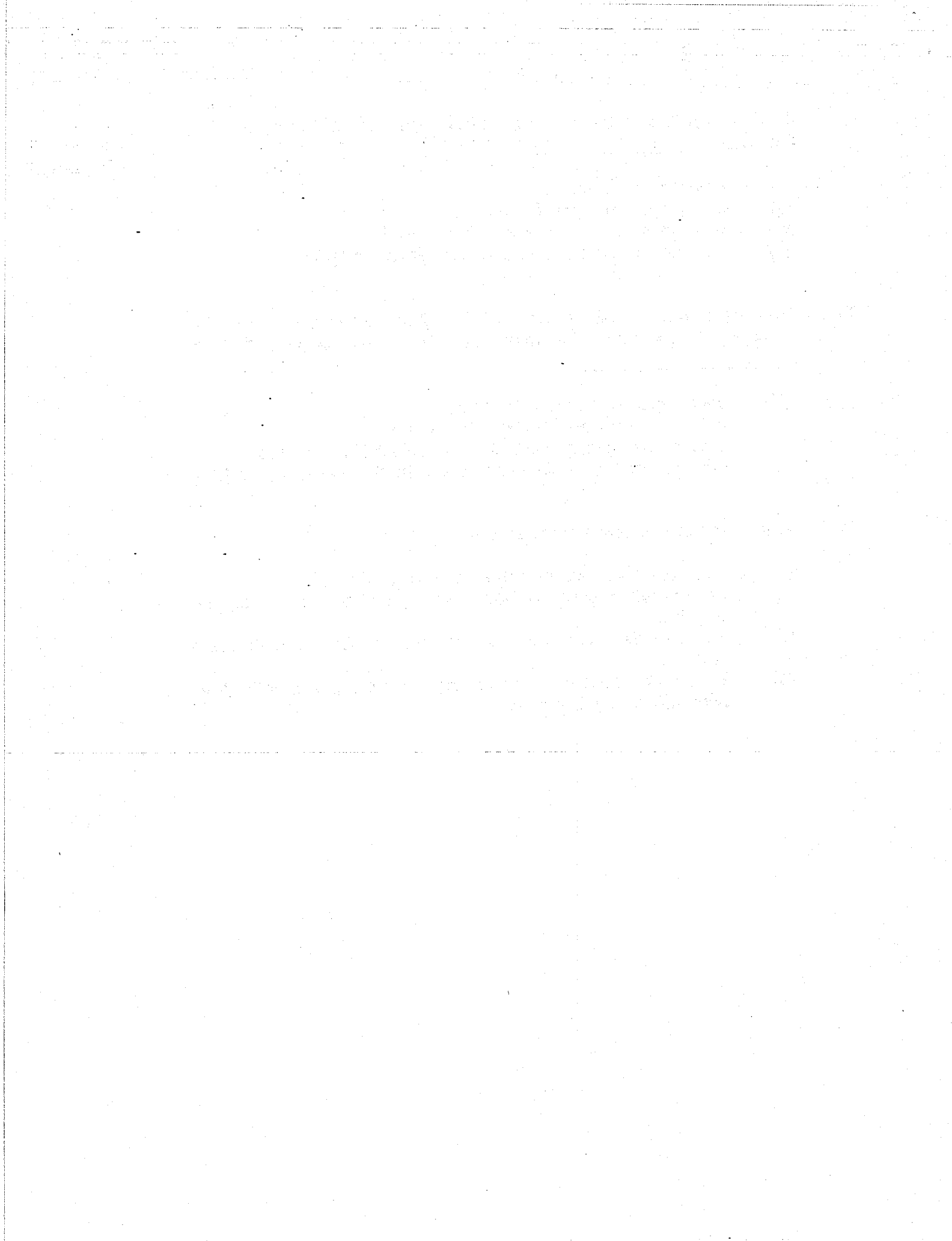
- (1) enjoy free refreshments
- (2) engage in some role-play activities
- (3) play different games and win attractive prizes
- (4) purchase individual reports about their career options

27. Your father runs a business and you think that it would be good for his company to participate in Career Fair 2018. You suggest that he _____.

- (1) conducts a talk about his company
- (2) sets up a recruitment booth at his company
- (3) submits information about job opportunities in his company
- (4) gets his talented employees to share about his company's values.

28. What is the main purpose of the article?

- (1) To inspire readers to work hard and succeed in life.
- (2) To motivate readers to take advantage of the career support initiative.
- (3) To persuade readers to leave their old jobs for new ones being created.
- (4) To advise readers to match their career options with their personalities and interests.



**RIVER VALLEY PRIMARY SCHOOL
PRELIMINARY EXAM / 2018
ENGLISH LANGUAGE PAPER 2
PRIMARY 6**

Booklet B

Duration of Paper (Booklets A and B) : 1 h 50 min

INSTRUCTIONS TO CANDIDATES

1. Do not turn over this page until you are told to do so.
2. Follow all the instructions carefully.
3. This booklet consists of 51 questions (Questions 29 to 80).
4. Answer all questions.
5. Write all your answers in this booklet.

	Mark Obtained	Maximum Mark
Booklet A		28
Booklet B		67
Total		95

There are 10 blanks, numbered 29 to 38 in the passage below. From the list of words given, choose the most suitable word for each blank. Write its letter (A to Q) in the blank. The letters (I) and (O) have been omitted to avoid confusion. EACH WORD CAN ONLY BE USED ONCE. (10 marks)

- | | | | | |
|-------------|----------|---------|-----------|-----------|
| (A) as | (D) for | (G) of | (K) that | (N) up |
| (B) besides | (E) form | (H) on | (L) these | (P) while |
| (C) by | (F) in | (J) out | (M) this | (Q) with |

Around the world today, dolphins face many dangers. While it is common knowledge 29) _____ pollution is a direct threat to dolphins, there is a general lack of awareness about the indirect threats faced 30) _____ them. This could be due to the poor publicity given to these dangers.

It may come as a surprise to many that tuna fishing causes 31) _____ to three million dolphins to be accidentally killed each year when they are caught in fishing nets. When fishing for tuna, fishermen actively seek 32) _____ dolphins as large schools of tuna often swim under them.

It is believed that 33) _____ tuna are actually following the dolphins to feeding grounds, and that at the same time, they are being protected by the dolphins. 34) _____ the fishermen do try to separate the dolphins from the tuna, many dolphins still get entangled in the nets and drown.

The destruction 35) _____ mangrove forests and coral reefs poses another threat to dolphins. These places play a significant role 36) _____ the food supply of the dolphins. This is because they are the sheltered breeding grounds of marine creatures that dolphins feed 37) _____. More and more mangrove forests have been cut down 38) _____ coastal development and saltwater ponds for farming fish and prawns. It is estimated that 58% of mangrove forests in Southeast Asia have already been lost.

Each of the underlined words contains either a spelling or a grammatical error. Write the correct word in each of the boxes. (12 marks)

39)

Accounts of shipwrecks and other marine disasters excert a fascination that is all

40)

but universal. Disasters in sea are rich in examples of superhuman skill but on occasion,

41)

criminal negligence as well. The name that inairvytably springs to mind whenever such

disasters are mentioned is Titanic. The loss of this ship in 1912 was particularly

42)

memorable not only because she sank on her first voyage after hitting an iceberg, and

43)

also because of the events that preseeded the disaster.

44)

The directors of the company that built Titanic was pioneers in the Transatlantic

passenger trade. However, they did not have much experience in the design and

45)

operation of aproprieight vessels since ships of this class and size were a very recent

46)

innovation. Competition for contracts in the pristijust and lucrative business of the

47)

Transatlantic run had spurred the major competitors to build increasin larger and faster

vessels.

With Titanic, it was the intention of her owner to build a vessel which was capable

48)

of operating at a competitive speed and also to focus in luxury as a means of attracting

49)

the wealthy. At the same time, Titanic was unickly designed with a system of watertight

compartments and electrically operated watertight doors. The designers got carried away

50)

from the advances they had made in the construction of the ship and this led them to

make unwarranted and inaccurate claims for its safety. Their claim that Titanic was

unsinkable was plausible but unfortunate in the light of subsequent events.

Adapted from 'PSLE English Language – Examination Questions (2000-2004)'

Fill in each blank with a suitable word. (15 x 1 mark)

Whenever we see pictures of animals or gaz at them within enclosures or cages in a zoo, we are often astounded 51) _____ their beauty. The tiger, with its well-defined stripes, is a magnificent creature, 52) _____ the leopard is equally attractive, with its richly spotted fur. This magnificence is not confined to just 53) _____ animals. Some of the smaller insects display intricate patterns 54) _____ colour. Who hasn't contemplated the delicate wings of a butterfly and wondered 55) _____ nature has created such beauty?

In fact, nature usually 56) _____ a reason for the appearance of any animal or insect. The butterfly's colouring is not 57) _____ about beauty. The vivid colours of some butterflies 58) _____ other creatures not to eat them, as well as allowing males to attract female butterflies to mate with them. The tiger's stripes, on the other hand, keep it camouflaged as it stalks its prey. 59) _____, the leopards' spotted coats, enable them to approach their intended victims discreetly. The colourings of these animals help them to be efficient hunters; 60) _____ would mean starvation.

The fight for 61) _____ is a drama played out every day on the wide plains of Africa. Here the herds of animals eat grass 62) _____ dawn to dusk, constantly observed by the lions and cheetahs. These grazing animals will eventually 63) _____ their preys when the big cats move silently, hugging the ground, then burst into a brief 64) _____ dazzling turn of speed. Frequently they work as a group, some chasing the herd, 65) _____ isolating its slower members. Once the big cats pounce, their sharp claws and dagger-like teeth will swiftly bring the killing process to its inevitable conclusion.

Adapted from 'O Level' English Language Paper 2 Nov 2005

For each of the questions from 66 to 70, rewrite the given sentence(s) using the word(s) provided. Your answer must be in one sentence. The meaning of your sentence must be the same as the meaning of the given sentence(s).
(5 x 2 = 10 marks)

66. The student has signed up for the course. He cannot be absent without a very good reason.

unless _____

67. None of the clothes in this laundry bag is dirty.

All _____

68. Mrs Wong told the class, "All of you have to report to me tonight before leaving the camp."

Mrs Wong _____

69. The weather was extremely cold and windy. Mr Lim could not head outdoors.

_____ too _____

70. Sandra was nominated to be the class chairperson. She was capable and responsible.

On account of _____

stood as pillars against the house, gently enough to leave it standing, but heavily enough to sink into the mud in the garden. The mud slide had been forced to slow down, leaving only trickles into the house.

Adapted from 'A Tale of Silence' by Durbin

ALL ANSWERS MUST BE IN COMPLETE SENTENCES.

71. What did Jii mean when he thought 'all would be over swiftly' in line 2? [2m]

72. How has dust showered down into Shimo's house? [2m]

73. Which object caused Shimo's house to move downhill? (1m)

74. Explain why Jii laughed when he saw Shimo laying out breakfast? (2m)

75. Write 1, 2 and 3 in the blanks below to indicate the order in which the events occurred in the passage. (1m)

_____ Jii realized that his own house and garden had been destroyed in the mud slide.

_____ The villages were looking for their relatives and belongings in the wreckage.

_____ Jii fainted as he thought he was going to die in the mud slide.

76. Which sentence in paragraph 4 shows that Jii was shocked to witness the destruction of the mud slide? (2m)

77. Explain what 'it' in line 26 refers to and what happened to it. (2m)

78. Look at the table below. State the cause or effect of the given phrase or sentence. (3m)

Cause	Effect
	Jii's heart beat quickly
	his slick heavy clothes
He was injured in his feet during the mud slide.	

79. Based on the story, state whether each statement in the table below is true or false, then give one reason why you think so. (3m)

	True/False	Reason
The mud slide had spared all the trees on the slope.		
Besides Shimo's house, all other houses in the village were destroyed in the mud slide		
There was external help during the aftermath of the mud slide		

80. Explain clearly the reason why Shimo's house had not collapsed. Support your answer from the evidence in the passage. (2m)

EXAM PAPER 2018(P6)

SCHOOL : RIVER VALLEY

SUBJECT : ENGLISH

TERM : PRELIM

Q1	Q2	Q3	Q4	Q5	Q6	Q7	Q8	Q9	Q10
1	3	2	1	4	2	2	3	4	3
Q11	Q12	Q13	Q14	Q15	Q16	Q17	Q18	Q19	Q20
2	3	2	2	1	4	4	2	2	2
Q21	Q22	Q23	Q24	Q25	Q26	Q27	Q28	Q29	Q30
2	3	2	4	1	2	3	2	K	C
Q31	Q32	Q33	Q34	Q35	Q36	Q37	Q38		
N	J	L	P	G	F	H	D		

39)exert 40)at 41)inevitably 42)but 43)preceded

44)were 45)appropriate 46)prestigious 47)increasingly

48)on 49)uniquely 50)By 51)by 52)while

53)large 54)of 55)why 56)has 57)just

58)warn 59)Similarly 60)failure 61)survival

62)from 63)become 64)but 65)others

66)The student, who has signed up for the course, cannot be absent unless he has a very good reason.

67)All the clothes in this laundry bag are clean.

68) Mrs Wong told the class that all of them had to report to her that night before leaving the camp.

69) The weather was too cold and windy for Mr Lim to head outdoors.

70) On account of her capability and responsibility, Sandra was nominated to be the class chairperson.

71) He meant that his experience in the mud slide would be over quickly as he knew he would die when the roof falls in.

72) There was a cracking sound overheard, as beams of the house split and dust showered down into Shimo's house.

73) Boulders caused Shimo's house to move downhill.

74) He found it funny that despite the mud slide, they were going to crouch in the muck and eat as if it were another ordinary day.

75) 2, 3, 1

76) The sentence is "His breath rushed out of him and he had to clutch the window sill".

77) It refers to the village that Jii lived in, which had disappeared in the mud slide in a single night.

78)

Cause	Effect
The house's wall crumbled and boulders pounded against the house, causing it to slip another few paces downhill, but it did not collapse. A branch from a tree shot through the cracked wall. Jii feared that he was going to die.	
Due to the mud slide, his clothes were covered in mud.	
	Jii winced at the pain in his feet as he hobbled to a window.

79)False / Most of the slope was cleared, leaving only a few lonely great trees.

False / A handful of well-built homes or barns remained intact.

True / There were police and emergency workers in bright uniforms and hard hats moving among the wreckage.

80)The jumble of century-old fallen tree trunks had stood as pillars against the house and the mud slide had been forced to slow down, leaving only trickles into the house.

