

# METHODIST GIRLS' SCHOOL

Founded in 1887



## CONTINUAL ASSESSMENT 2013 PRIMARY 3 SCIENCE

Total Time for Sections A and B: 1 hour

### INSTRUCTIONS TO CANDIDATES

Do not turn over this page until you are told to do so.

Follow all instructions carefully.

Answer all questions.

Write your answers in this booklet.

Name: \_\_\_\_\_ (    )

Class: Primary 3. \_\_\_\_\_

Date: 7 March 2013

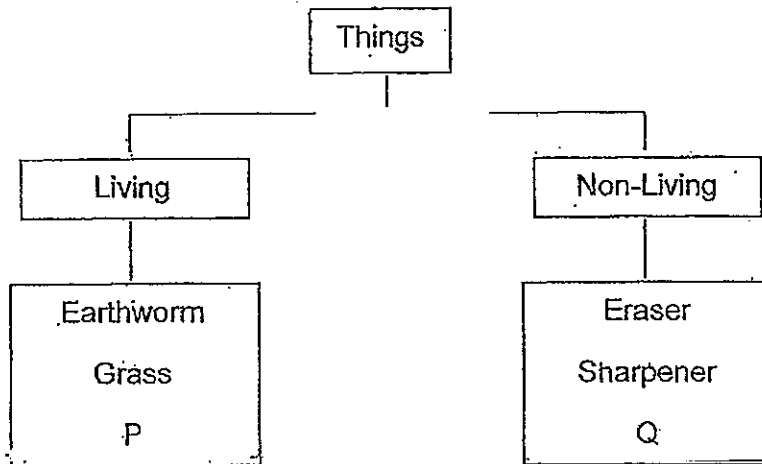
<b>Section A</b>	<b>/ 30</b>
<b>Section B</b>	<b>/ 20</b>
<b>TOTAL</b>	<b>/ 50</b>

This booklet consists of 13 printed pages including this page.

## SECTION A : 30 marks

For each question from 1 to 15, four options are given, one of them is the correct answer. Make your choice (1, 2, 3 or 4). Shade the correct oval (1, 2, 3 or 4) on the Optical Answer Sheet.

1. Joseph grouped some things according to the classification chart shown below.



What could P and Q be?

	P	Q
(1)	Soil	Stone
(2)	Fly	Coral
(3)	Seed	Plate
(4)	Bag	Ant

2. Which animal is wrongly matched to its group?

	Animal Group	Animal
(1)	Bird	Kingfisher
(2)	Insect	Ladybird
(3)	Fish	Mudskipper
(4)	Mammal	Shark

(Go on to the next page)

3. Compare the two organisms below.



Mushroom



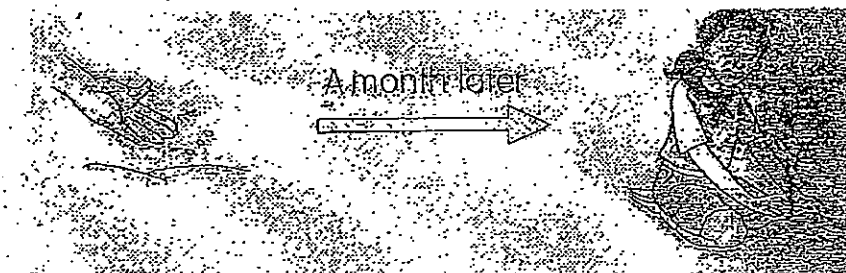
Fern

Which of the following statements is **incorrect**?

- (1) Both reproduce by spores
  - (2) Both do not produce flowers
  - (3) Both cannot make their own food.
  - (4) Both cannot move from one place to another on their own.
4. Which of the following are **incorrectly** paired?

	Item	Living thing from which it comes
(1)	Silk	Silkworm
(2)	Tyre	Rubber tree
(3)	Charcoal	Tree
(4)	Candle wax	Plant

5. Sarah planted some sunflower seeds for her Science project. After a month, she observed healthy young sunflower plants growing but she did not see any sunflower. Why?



- (1) The plant only bears flowers after it matures.
- (2) Sarah used the wrong type of sunflower seeds.
- (3) The soil used was not suitable for sunflower plants.
- (4) It is a male plant, so it will not produce any flowers.

(Go on to the next page)

6. Which of these birds cannot fly?

A.



B.



C.



D.

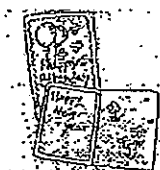


- (1) B only
- (2) A and C only
- (3) B and D only
- (4) A, B and D only

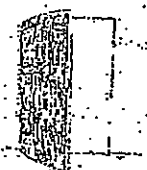
7. What do these items have in common?



disposable chopsticks



greeting cards



wooden door



mahogany table



shoebox



textbook

- A: They come from trees.
- B: They need air to survive
- C: They are non-living things.
- D: They are made of things that were never alive

- (1) A and B
- (2) A and C
- (3) C and D
- (4) A, B and D

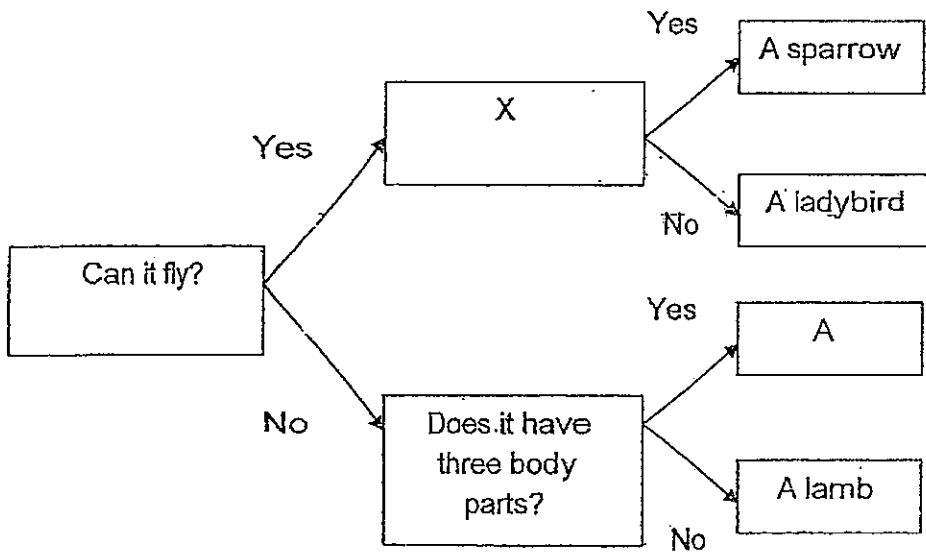
(Go on to the next page)

8. Plants are important to us because different plants can provide us with \_\_\_\_\_.

- A: Food
- B: Shade
- C: Medicine
- D: Materials

- (1) A and B
- (2) B and C
- (3) A, B and D
- (4) A, B, C and D

Study the flow chart below and answer questions 9 and 10.



9. Which of the following questions does X represent?

- (1) Does it eat plants?
- (2) Does it have feathers?
- (3) Does it have two legs?
- (4) Does it have two wings?

10. Animal A is a \_\_\_\_\_.

- (1) Spider
- (2) Butterfly
- (3) Scorpion
- (4) Silverfish

(Go on to the next page)

11. Divers carry a tank of oxygen when they go underwater. This is because \_\_\_\_\_



- (1) the water is too cold.
- (2) there is no oxygen in water.
- (3) humans cannot breathe in water.
- (4) there is too much salt in the water.

2. A teacher placed a stick in the middle of a field. Four students were asked to observe the shadow of the stick and to state their observation. Which student is correct?

Steven: A shadow is a living thing as it can move and grow in length.

Grace: A shadow is a non-living thing as it cannot reproduce.

David: A shadow is a living thing as it responds to the positions of the Sun in the sky.

Tim: A shadow is a non-living thing as its position and length depend on the Sun's position.

- (1) Tim only
- (2) Steven only
- (3) Grace and Tim
- (4) Steven and David

13. Chloe caught two different organisms which can fly. One of them is an insect. Which of the following characteristics are important in identifying that it is an insect?

- A: A head
- B: Two eyes.
- C: Two wings.
- D: Two antennae.
- E: Three body parts

- (1) A and B only
- (2) D and E only
- (3) A, B and C only
- (4) C, D and E only

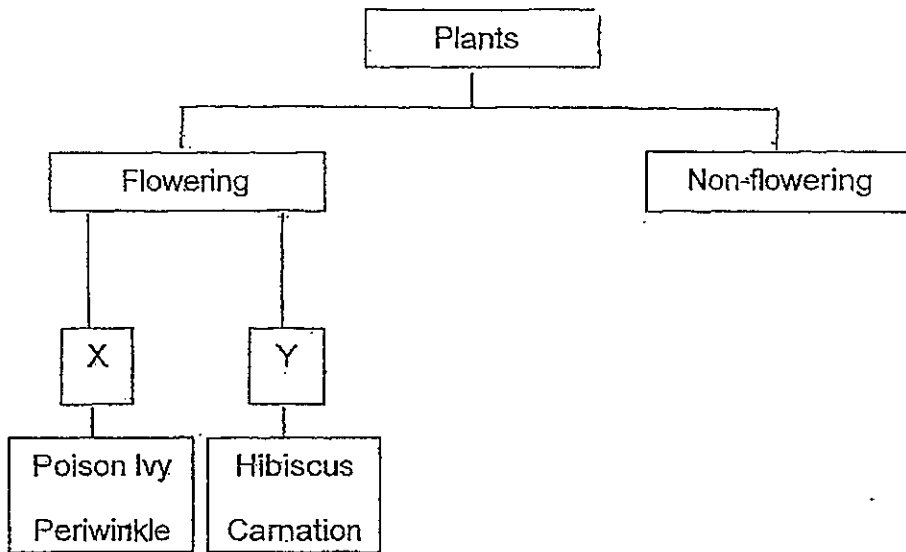
14. Study the table below

P	Q
Hibiscus	Moss
Balsam	Algae
A	B

What could A and B be?

	A	B
(1)	Tree Fern	Morning Glory
(2)	Rose	Dragon's Scales
(3)	Banana Tree	Durian Tree
(4)	Allamanda	Flame of the forest

15. Study the classification below.



What is the most suitable heading for Y?

- (1) Edible
- (2) Grow singly
- (3) Grow on land
- (4) Non-poisonous



## SECTION B : 20 marks

For questions 16 to 23, write your answers in the spaces provided.

The number of marks available is shown in brackets [ ] at the end of each question, or part question.

16. Six animals are classified into two groups as shown in the table below.

Group 1	Group 2
Horse	Eagle
Cow	Seagull
Rabbit	Tiger

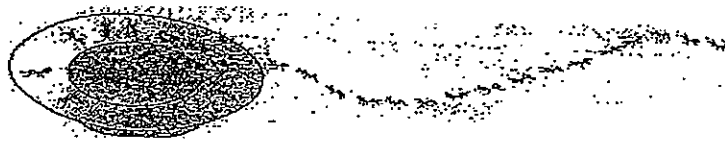
a) Suggest a suitable heading for the two groups.

(i) Group 1: \_\_\_\_\_ [1]

(ii) Group 2: \_\_\_\_\_ [1]

b) Which group does a crocodile belong to? [1]

17. Jill placed a plate of sugar on the kitchen floor. After some time, ants were seen surrounding the sugar on the plate.



Write down the two characteristics of living things that can be observed from the above picture.

a) \_\_\_\_\_ [1]

b) \_\_\_\_\_ [1]

(Go on to the next page)

18. Study the data below. It shows the mass of a baby rabbit over a period of time.

Age in weeks	Mass in grams
2	200
3	300
4	450
5	?
6	650

- a) Predict the mass of the baby rabbit in week 5 from the data given in the table above.

[1]

---

- b) What is the relationship between the age of the rabbit and its mass?

[1]

---

19. A bat and an owl cannot be classified under the same group. Write down two characteristics to differentiate a bat and an owl.



Mammal



Bird

a)

---



---

b)

---



---

[1]

(Go on to the next page)

20. After an excursion to the Botanic Gardens, Davi wrote a short journal entry on the plants he saw there. Read his account and answer the questions below.

Some plants were growing on trees. These plants had large green leaves. I touched one of the leaves and some tiny brown particles stuck to my hand. These particles were very light. I found more of these particles on the underside of the leaves.

- (a) What kind of plants did Davi write about? [1]

---

- (b) What are the brown particles called? [1]

---

- (c) What is the function of the brown particles?

---

- (d) What features make them suitable for their function? [1]

---

21. Study the classification below.

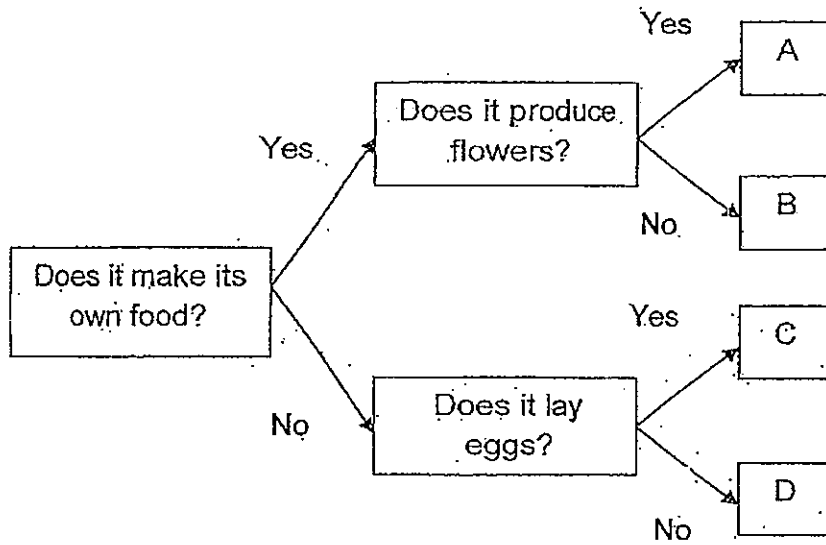
P	Q
Rose	Frangipani
Tulip	Ixora
Sunflower	Bougainvillea

What headings would you give to P and Q?

P: \_\_\_\_\_ [1]

Q: \_\_\_\_\_ [1]

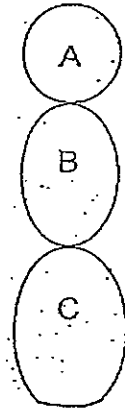
22. Study the flow chart below.



Write down the letters A, B, C and D correctly in the blanks provided. [2]

- a) Turtle \_\_\_\_\_
- b) Heliconia \_\_\_\_\_
- c) Rhinoceros \_\_\_\_\_
- d) Staghorn Fern \_\_\_\_\_

23. The diagram below represents the structure of an animal (the positions of the legs are not shown).



a) State the group that the animal belongs to. [1]

---

b) To which part of the body would its legs be attached? Write down the letter (A, B or C). [1]

---

c) Name the part that the legs would be attached to. [1]

---

END OF PAPER



# ANSWER SHEET

**EXAM PAPER 2013**

**SCHOOL : METHODIST GIRLS' SCHOOL**

**SUBJECT : PRIMARY 3 SCIENCE**

**TERM : CA1**

---

Q1	Q2	Q3	Q4	Q5	Q6	Q7	Q8	Q9	Q10	Q11	Q12	Q13	Q14	Q15
3	4	3	4	1	3	2	4	2	4	3	3	2	2	4

Section B

Q16

- a) i) herbivore
- ii) carnivore
- b) Group 2

Q17

- a) Living things need food to survive
- b) Living things respond to changes in their surroundings

Q18

- a) 550g
- b) As it grows older, its mass increases.

Q19

- a) The bat gives birth to its young alive, while the owl lays eggs
- b) The owl has a beak while the bat does not have a beak.

Q20

- a) Ferns
- b) Spores
- c) To spread and grow into ferns

d) They are light and can be easily carried by wind

Q21

P: Grows singly/singularly

Q: Grows in clusters/bunches

Q22

a) C

b) A

c) D

d) B

Q23

a)insects

b) B

c) thorax