



## PRIMARY 3 MID-YEAR EXAMINATION 2013

Name : \_\_\_\_\_ (       ) Date: 20 May 2013

Class : Primary 3 (       )

Time: 8.00 a.m. to 9.30 a.m.

Parent's Signature : \_\_\_\_\_

Marks: \_\_\_\_\_ / 40

# SCIENCE BOOKLET A

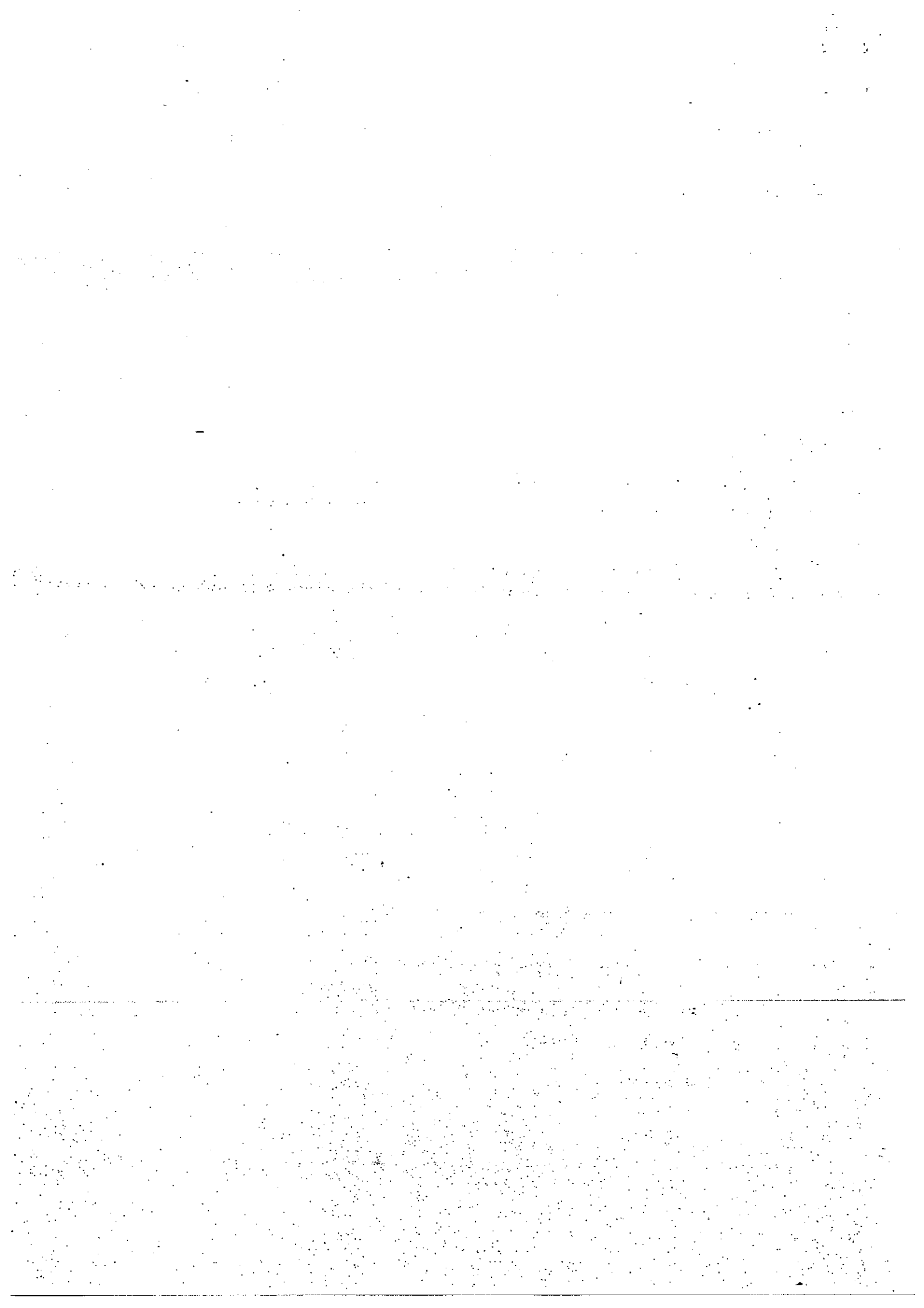
### INSTRUCTIONS TO CANDIDATES

Write your name, register number and class.

Do not turn over this page until you are told to do so.

Follow all instructions carefully.

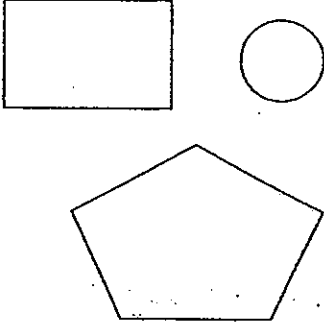
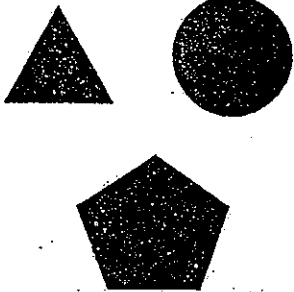
Answer all questions.



**Section A ( 20 x 2 marks = 40 marks)**

For each question, choose the most suitable answer and shade its corresponding oval (1, 2, 3 or 4) in the optical answer sheet.

1. Study the classification table below.

Group X	Group Y
	

How are the things in Group X and Group Y classified?

- (1) Things in Group X and Group Y are grouped according to size.
- (2) Things in Group X and Group Y are grouped according to shape.
- (3) Things in Group X and Group Y are grouped according to colour.
- (4) Things in Group X and Group Y are grouped according to pattern.

2. Which of the following is grouped correctly?

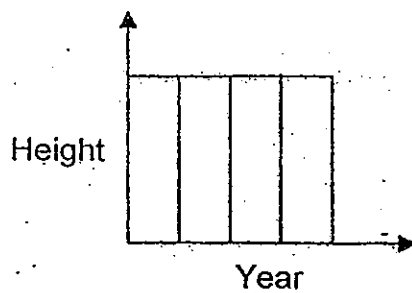
	Living thing	Non-living thing
(1)	Mushroom	Tree
(2)	Frog	Spoon
(3)	Mirror	Bacteria
(4)	Watch	Raincoat

3. Angela saw a dragonfly at a pond. She tried to catch the dragonfly but it flew away. What characteristic of living things did the dragonfly show?

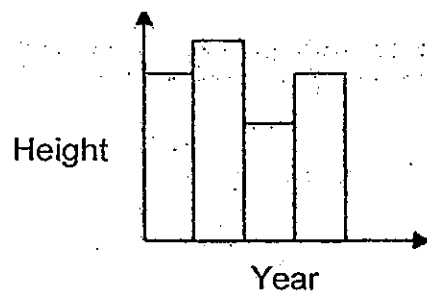
- (1) It can die.
- (2) It can grow.
- (3) It lays eggs.
- (4) It can move on its own.

4. Which of the following graphs show the height of a healthy growing child?

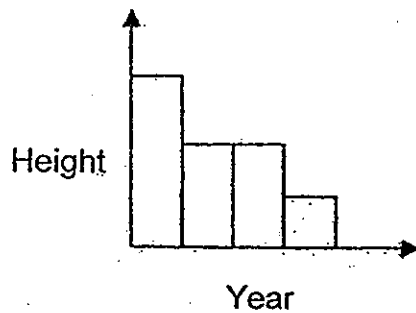
(1)



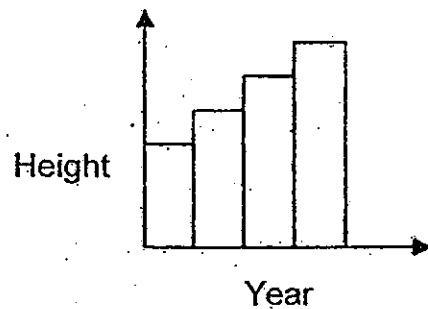
(2)



(3)



(4)

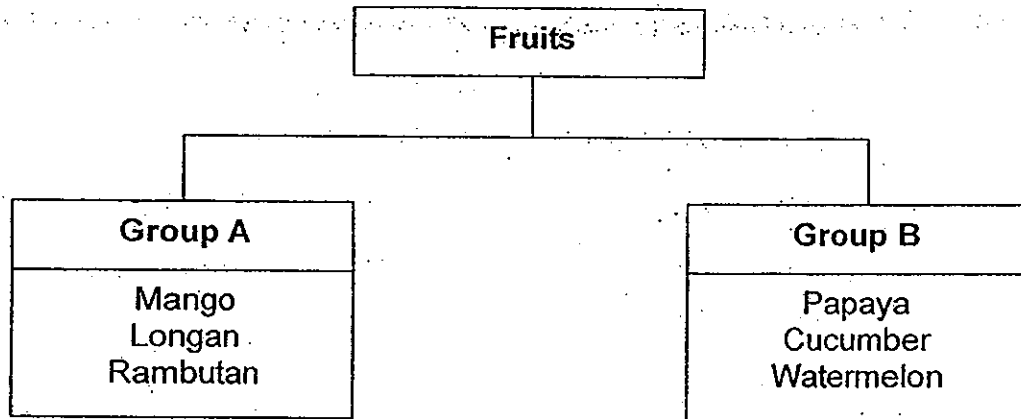


5. Melissa placed a potted plant in a dark cupboard. After a week, the plant withered even though she watered it daily.

What can Melissa conclude from this?

- (1) Plants can grow.
- (2) Plants can reproduce.
- (3) Plants need sunlight to live.
- (4) Plants cannot move around freely.

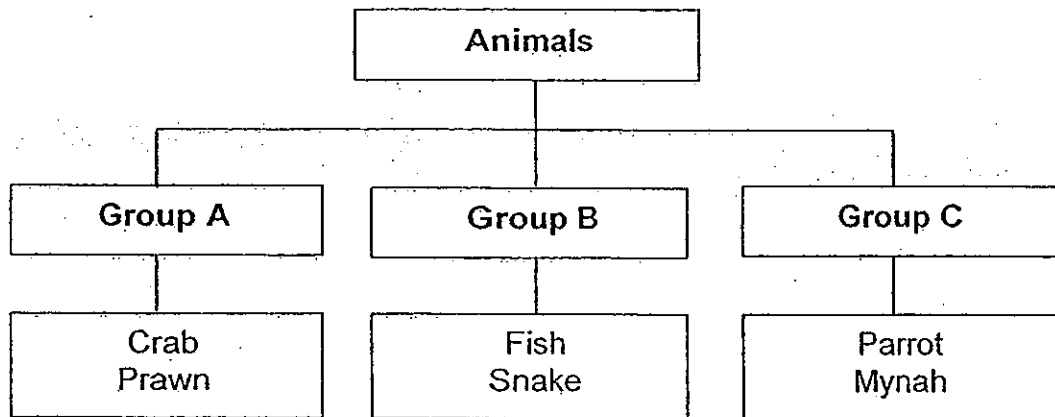
6. In the classification chart below, the fruits are grouped according to certain characteristics.



Which one of the following shows the correct characteristics of the fruits in Group A and Group B?

	Group A	Group B
(1)	Edible	Inedible
(2)	Yellow flesh	Red flesh
(3)	Rough skin	Smooth skin
(4)	Single seed	Many seeds

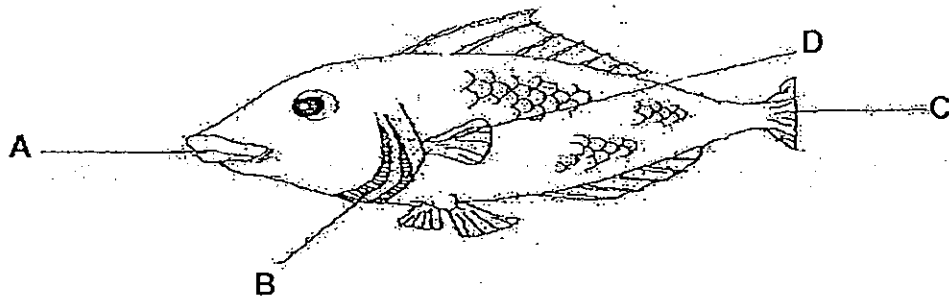
7. Study the classification chart below.



How are the animals above grouped?

- (1) By their shape
- (2) By the way they move
- (3) By the way they reproduce
- (4) By their outer body coverings

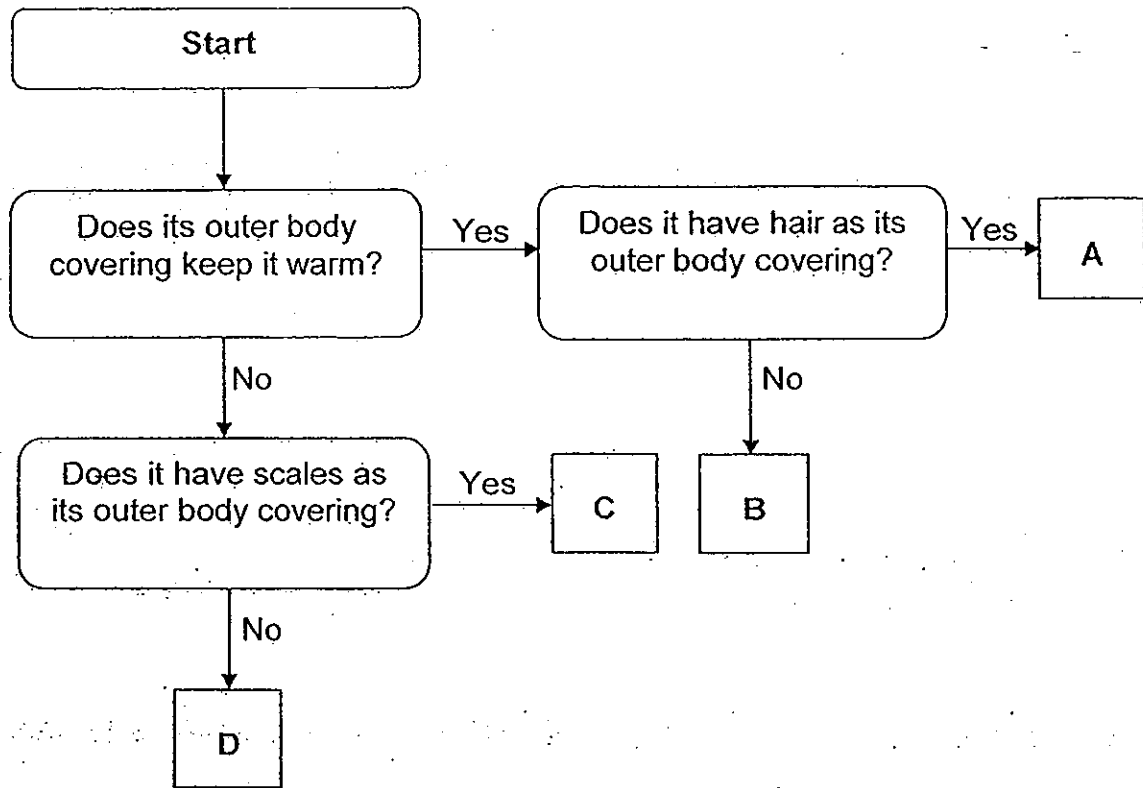
8. Study the diagram below.



Which of the following correctly represents the body parts of the fish?

	A	B	C	D
(1)	Gill Cover	Mouth	Fin	Tail
(2)	Mouth	Gill Cover	Tail	Fin
(3)	Tail	Fin	Mouth	Gill Cover
(4)	Fin	Mouth	Tail	Gill Cover

9. Study the flowchart below.

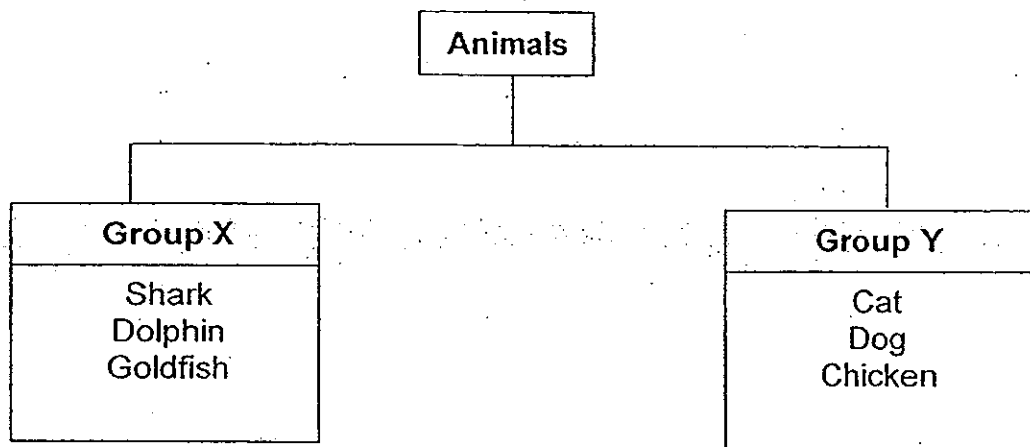


Which of the following animals represent A, B, C and D?

	A	B	C	D
(1)	Lion	Guppy	Ostrich	Platypus
(2)	Butterfly	Bear	Whale	Crab
(3)	Rabbit	Penguin	Goldfish	Mosquito
(4)	Eagle	Spiny Anteater	Angelfish	Grasshopper



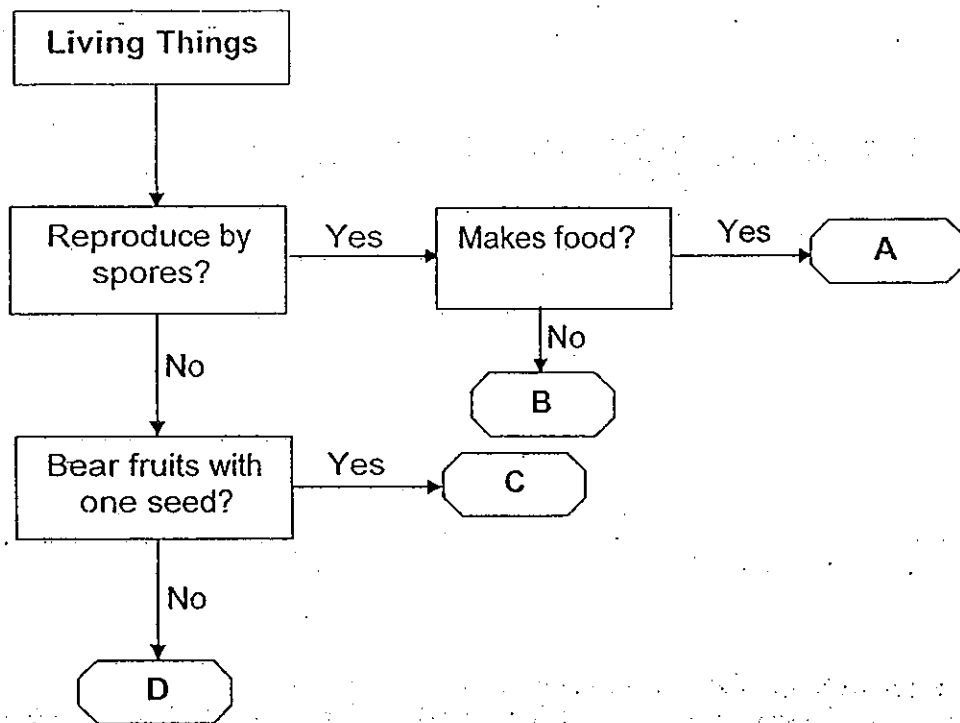
10. Study the classification chart below.



Which of the following represent Group X and Group Y?

	Group X	Group Y
(1)	Animals that swim	Animals that fly
(2)	Animals without hair	Animals with hair
(3)	Animals that live in water	Animals that live on land
(4)	Animals that lay eggs	Animals that give birth to young alive

11. Study the flowchart below.



Which of the following represent A, B, C and D?

	A	B	C	D
(1)	Orchid	Mushroom	Mango Tree	Rambutan Tree
(2)	Bird's Nest Fern	Bread Mould	Cactus	Rambutan Tree
(3)	Staghorn Fern	Bread Mould	Mango Tree	Durian Tree
(4)	Rose Plant	Mushroom	Cactus	Durian Tree

12. Angeline carried out an experiment to find out more about the growth of mould on 4 pieces of similar bread slices.

Bread slice	What Angeline did to the bread slice?	Location of the bread slice
A	Sprinkled water on the bread slice then toasted it for 10 minutes	In a freezer
B	Sprinkled water on the bread slice	In a freezer
C	Sprinkled water on the bread slice then toasted it for 10 minutes	In a cupboard
D	Sprinkled water on the bread slice	In a cupboard

On which piece of bread slice was she likely to observe mould being formed the fastest?

- (1) A
- (2) B
- (3) C
- (4) D

13. The characteristics of W, X, Y and Z are given in the table below.

Characteristics	W	X	Y	Z
Responds to changes?	Yes	No	Yes	Yes
Can only be seen through a microscope?	No	Yes	Yes	No
Can make its own food?	No	No	No	Yes

Which of the following is a micro-organism?

- (1) W
- (2) X
- (3) Y
- (4) Z

14. Three pupils, Carole, Jonathan and Christopher were talking about Organism Y.

Carole: It can make us sick.

Jonathan: It is so tiny. I cannot see it.

Christopher: It can be used to turn milk into yoghurt.

What is Organism Y?

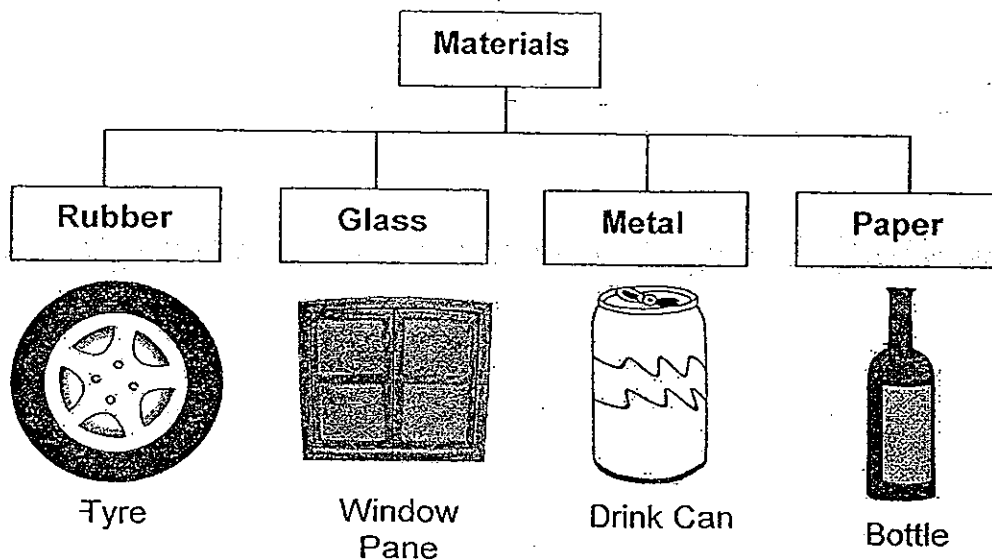
- (1) Ant
- (2) Moss
- (3) Mould
- (4) Bacteria

15. Why are the lenses of a pair of spectacles made of either clear glass or clear plastic?



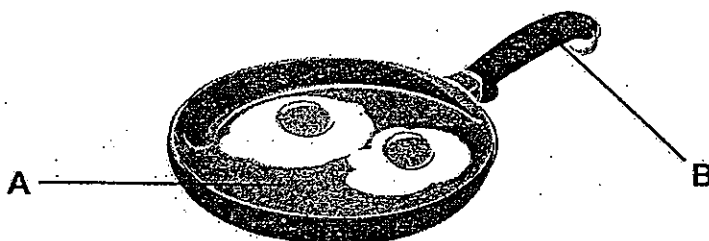
- (1) These materials are light.
- (2) These materials are thick.
- (3) These materials are strong.
- (4) These materials are transparent.

16. The objects in the classification chart below are classified according to the materials they are made of.



Which object in the classification chart above is classified **incorrectly**?

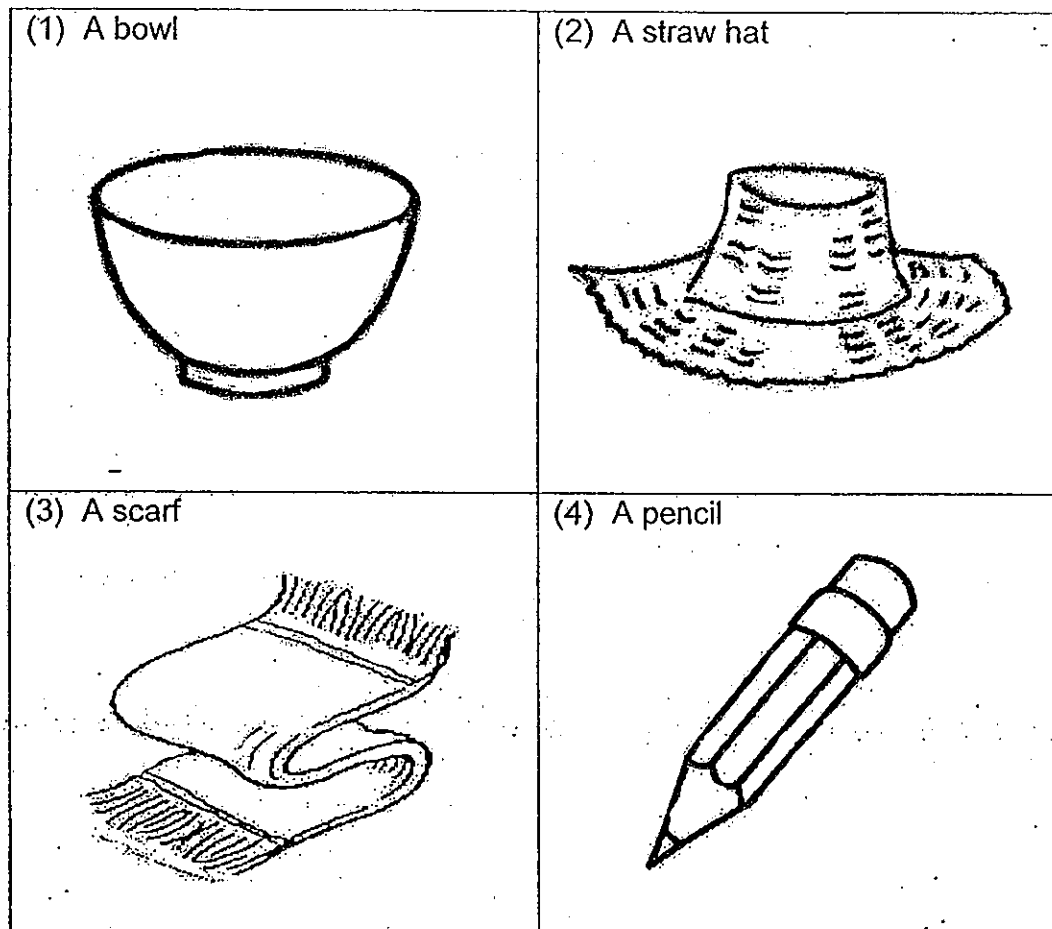
- (1) Tyre
  - (2) Bottle
  - (3) Drink Can
  - (4) Window Pane
17. Below shows a frying pan with parts labelled A and B.



Which of the following are materials that are suitable for making the parts A and B?

	A	B
(1)	Glass	Ceramic
(2)	Metal	Plastic
(3)	Plastic	Metal
(4)	Rubber	Glass

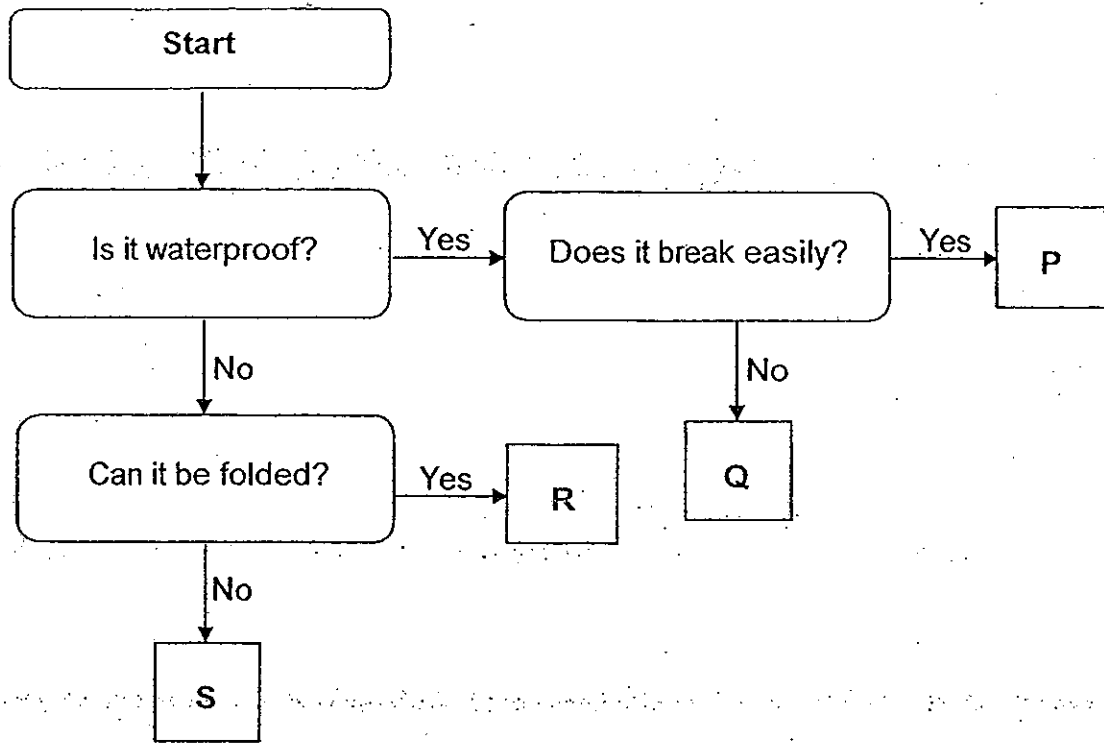
18. Which of the following is made of more than one material?



19. Which of the following comes from plants?

- (1) Silk
- (2) Wool
- (3) Rubber
- (4) Leather

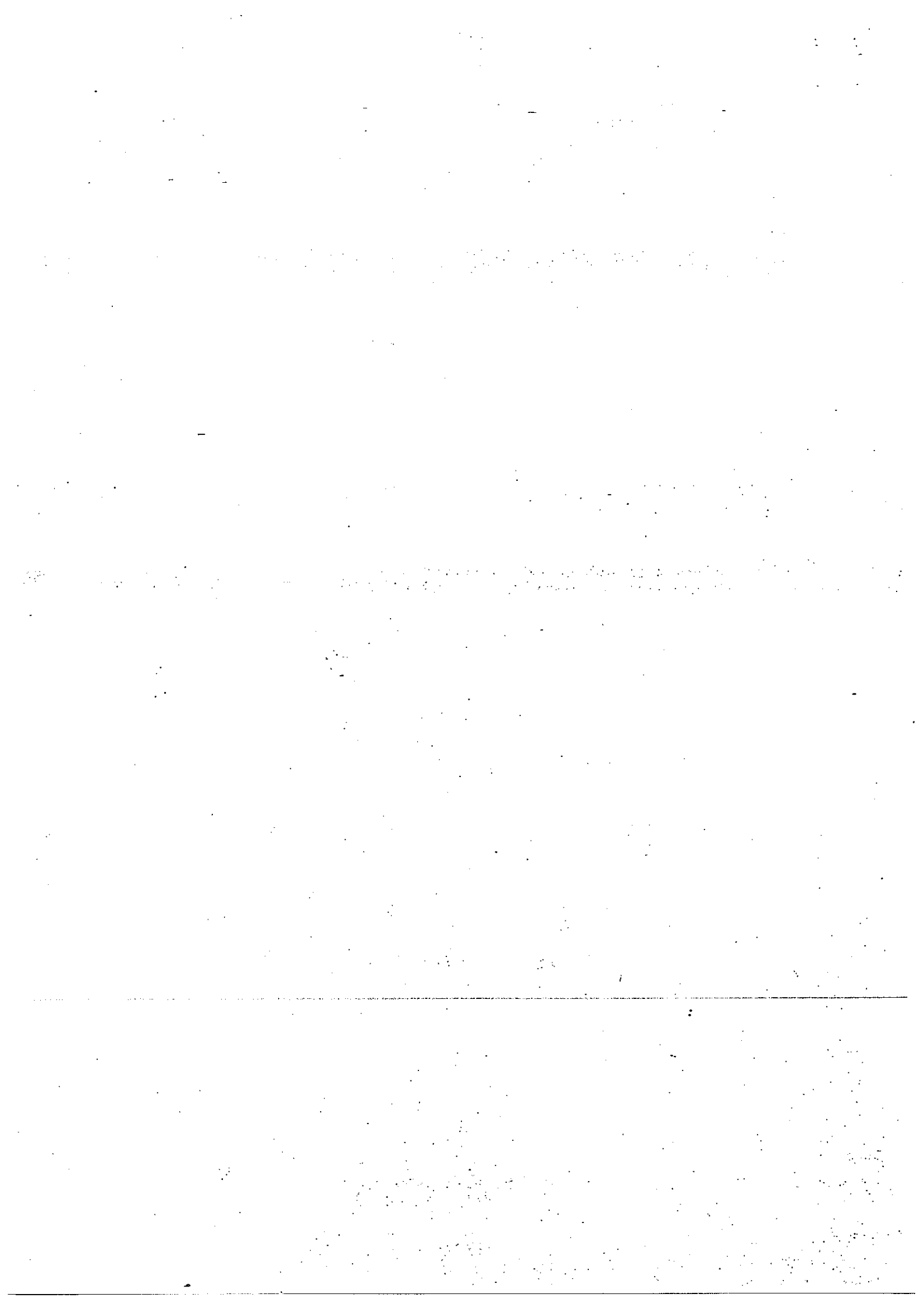
20. Study the flowchart below.



Where will you place a porcelain cup and a bath towel?

	Porcelain Cup	Bath Towel
(1)	S	Q
(2)	P	R
(3)	Q	S
(4)	R	P

– End of Booklet A –







## PRIMARY 3 MID-YEAR EXAMINATION 2013

Name : \_\_\_\_\_ ( ) Date: 20 May 2013

Class : Primary 3 ( )

Time: 8.00 a.m. to 9.30 a.m.

Parent's Signature : \_\_\_\_\_

Marks: \_\_\_\_\_ / 30

# SCIENCE BOOKLET B

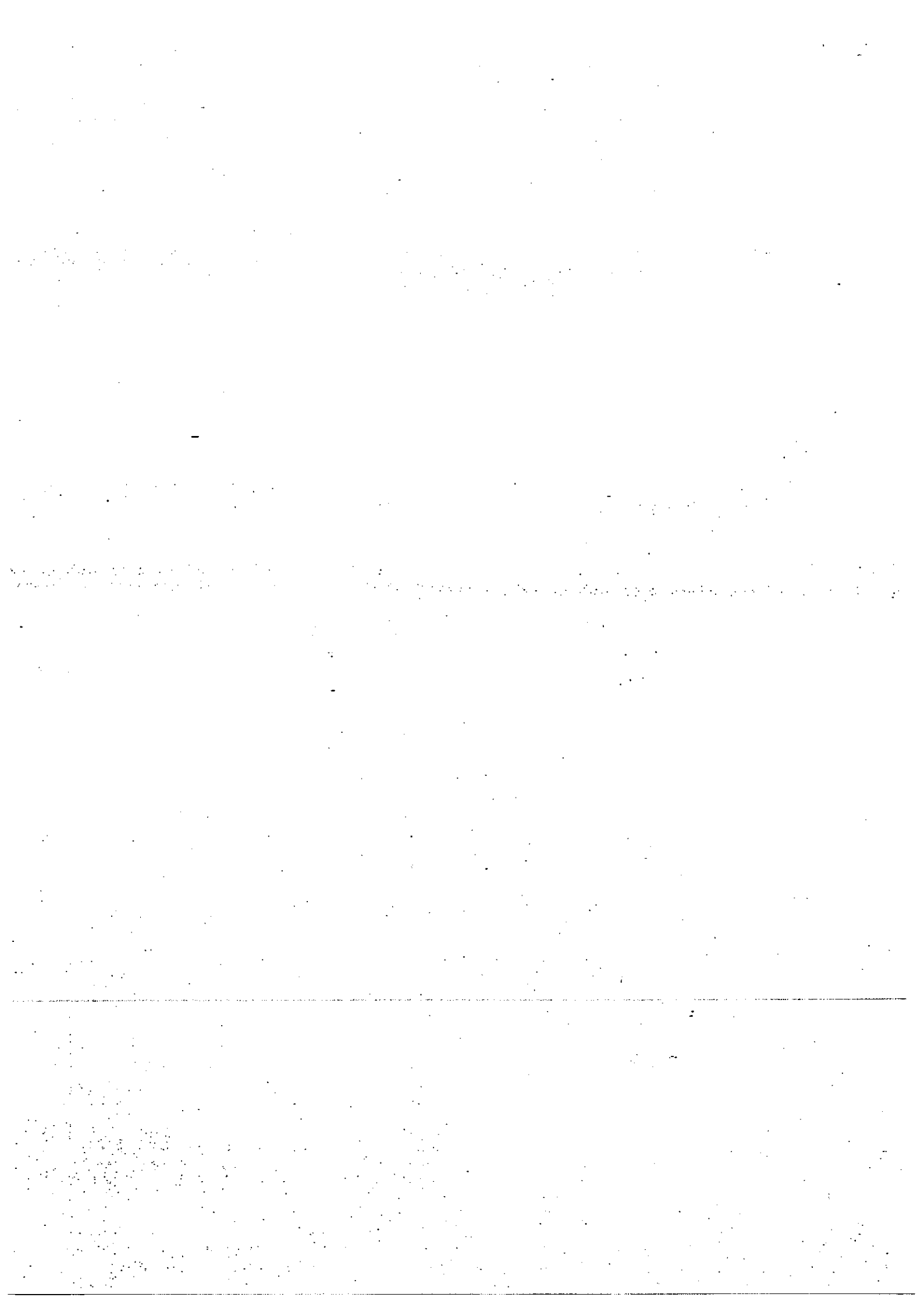
### INSTRUCTIONS TO CANDIDATES

Write your name, register number and class.

Do not turn over this page until you are told to do so.

Follow all instructions carefully.

Answer all questions.



**Section B (30 marks)**

Write your answers in the spaces provided.

21. (a) The following tells us the characteristics of living things.

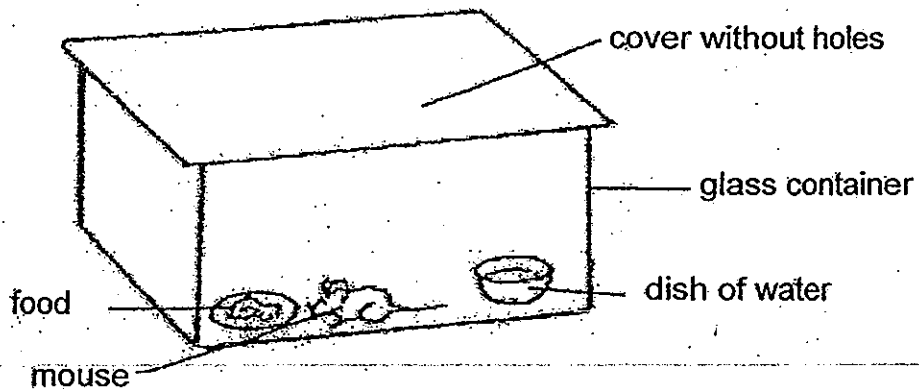
Characteristics	
A:	Living things grow.
B:	Living things move.
C:	Living things reproduce.
D:	Living things need air, food and water.

Match the activities below to the characteristics above.  
Write A, B, C or D in the spaces provided.

(2m)

Activities	Characteristics
(1) A bird lays an egg.	
(2) A frog swims in a pond.	
(3) A chick grows into a hen.	
(4) A cheetah feeds on a deer.	

(b) Karen placed a mouse in a glass container together with a dish of water and some food as shown below. Then she covered and sealed the box to prevent the mouse from getting out. A few days later, the mouse was dead.



Explain why the mouse died.

(1m)

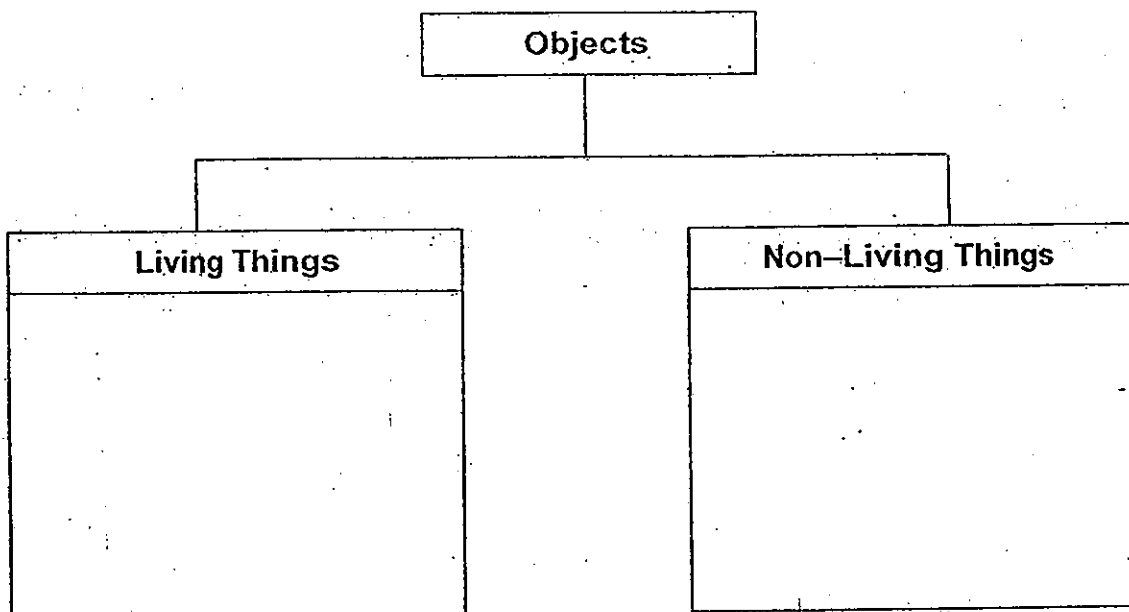
---



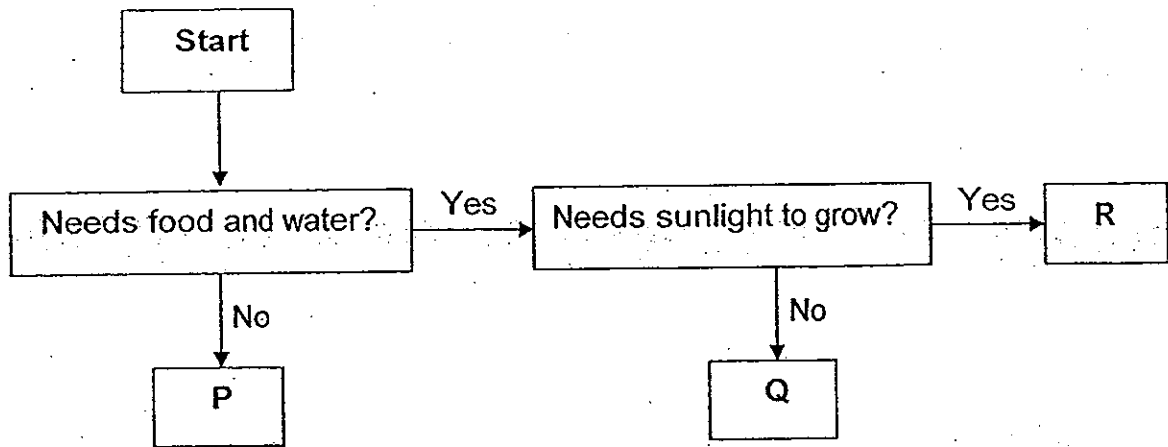
---

22. Classify the objects below under the correct headings of the classification chart provided. (3m)

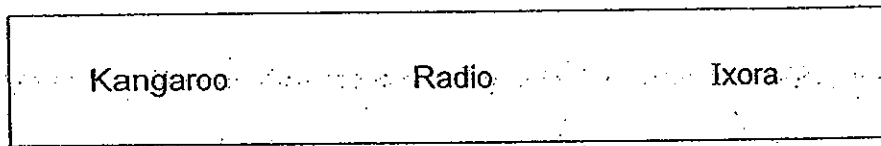
Objects		
Bicycle	Shirt	Pigeon
Venus flytrap	Dolphin	Wallet



23. Study the flowchart below.



(a) Which of the following are P and R?



P : \_\_\_\_\_ (1m)

R : \_\_\_\_\_ (1m)

(b) Peter studied the flowchart above and identified Sunflower as "Q" as shown below.

Q : Sunflower

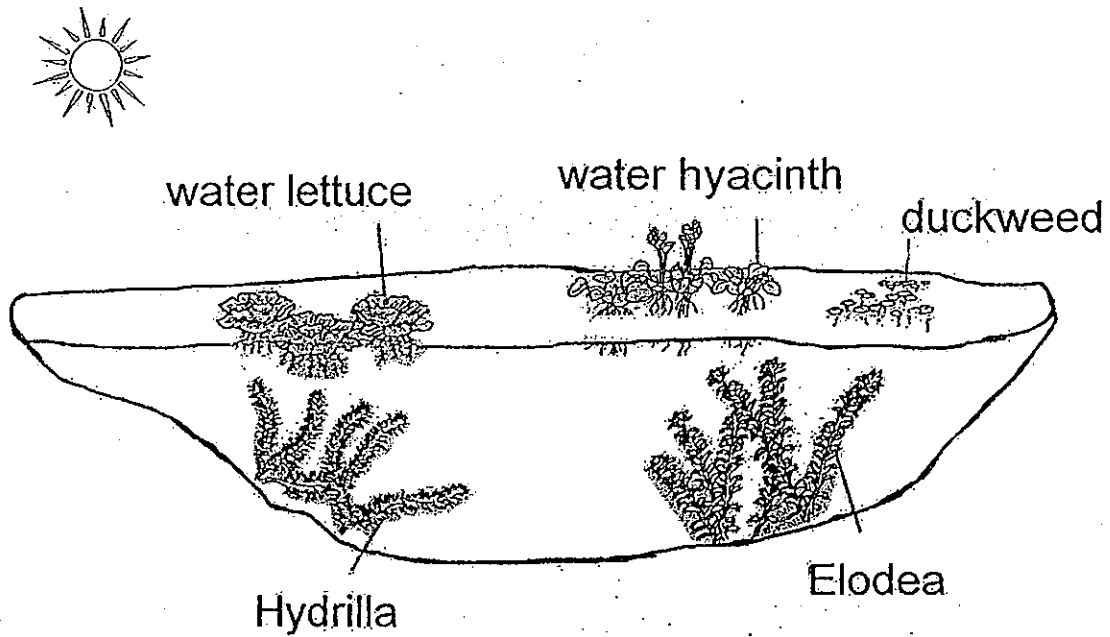
Is Peter correct? Explain your answer based on the flow chart above. (1m)

---

---

---

24. (a) Look at the water plants in the pond below.



Based on the pond above, circle 'True', 'False' or 'Not Possible To Tell' for the following. (1m)

(i)	Water hyacinth is a flowering plant.	True	False	Not Possible To Tell
(ii)	The water plants need sunlight to grow.	True	False	Not Possible To Tell
(iii)	Duckweeds are smaller in size than water lettuce.	True	False	Not Possible To Tell
(iv)	There are more types of submerged plants than floating plants.	True	False	Not Possible To Tell

(b) Elodea is a submerged plant. Its leaves trap sunlight to make food, using carbon dioxide and water. Which characteristic of living things is Elodea showing? (2m) ~~(1m)~~

---

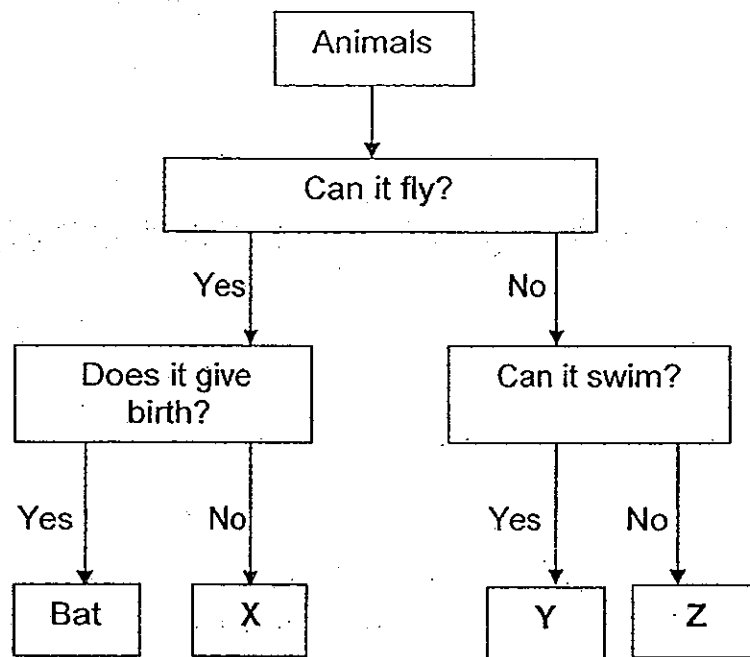


---



---

25. Study the flow chart below.



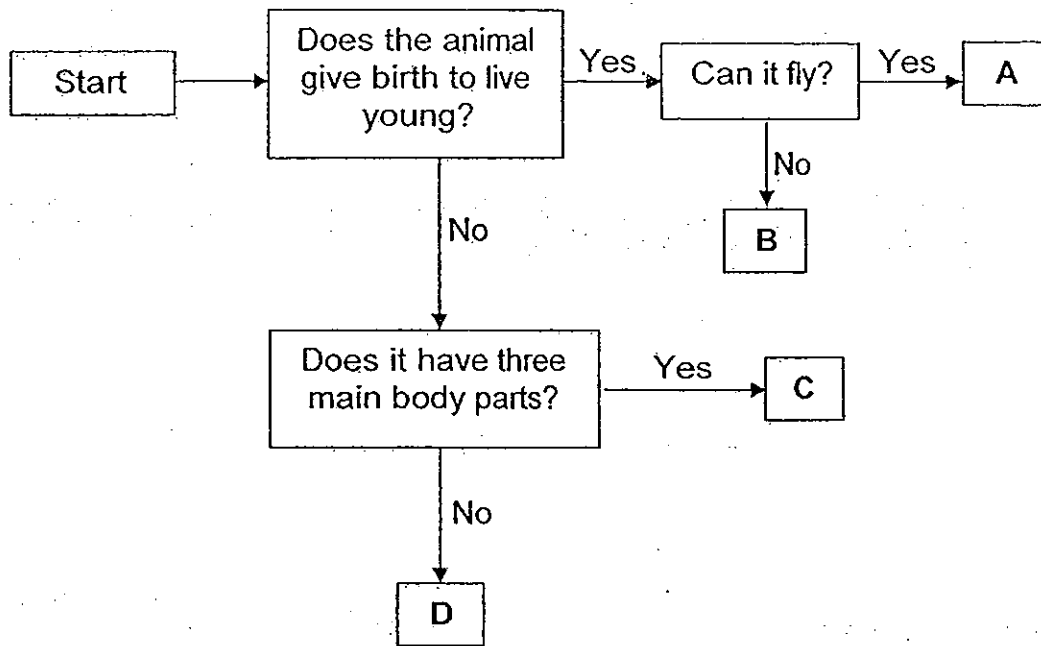
Identify the animals represented by the letters, X, Y and Z, in the flow chart above. Write X, Y or Z in the correct boxes below. (3m)

(a) Emu:

(b) Crow:

(c) Stingray:

26. Study the flowchart below.



(a) Based on the flowchart above, state the characteristics of the animal, C. (1m)

---

---

---

(b) How are the animals, A and B, similar? (1m)

---

---

---

(c) How are the animals, C and D, different? (1m)

---

---

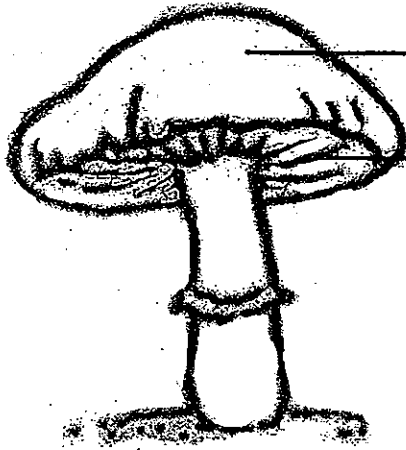
---



27. The picture below shows a mushroom.

(a) Name the parts of the mushroom labelled A and B.

(2m)



A: \_\_\_\_\_

B: \_\_\_\_\_

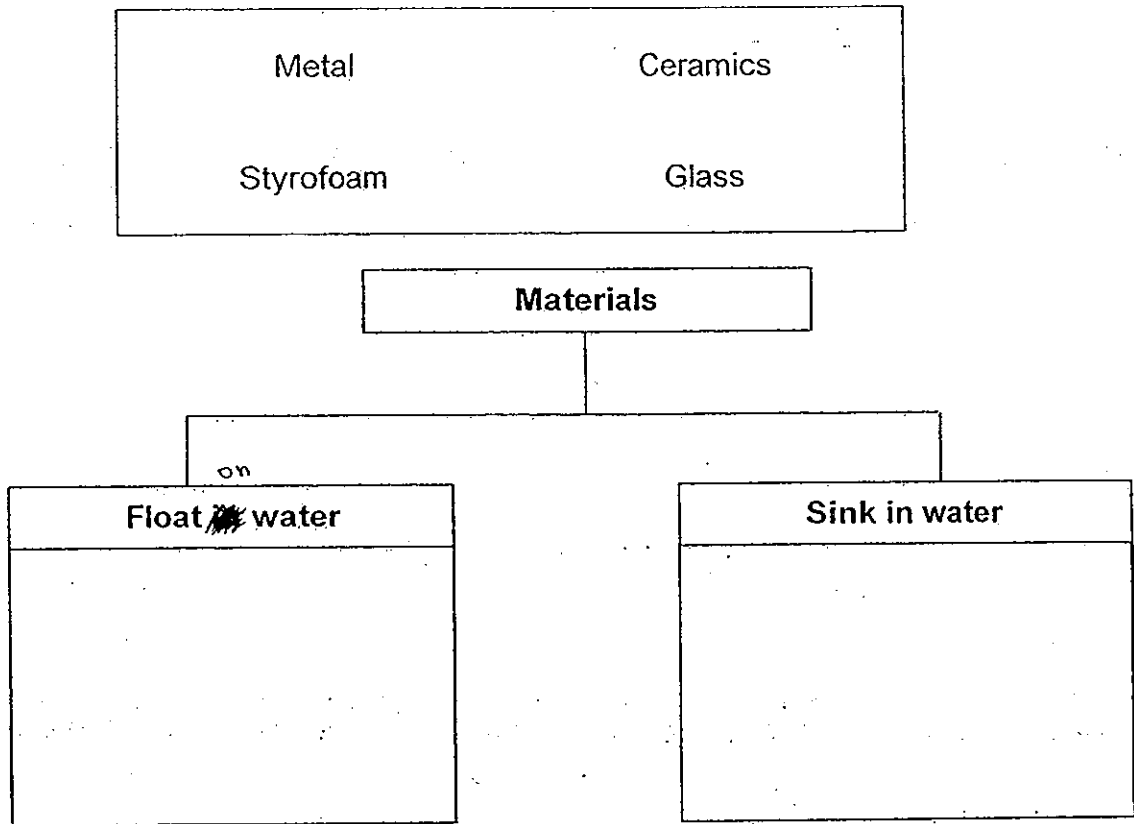
(b) How does mushroom reproduce?

(1m)

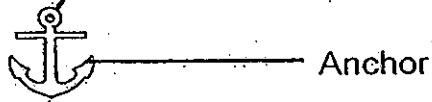
---

---

28. (a) Classify the materials below under the correct headings of the classification chart provided. (2m)



- (b) An anchor is used to keep a ship in one place.



What material is suitable for making the anchor? Give a reason for your \_\_\_\_\_ (1m)

---

---

---

# ANSWER SHEET

**EXAM PAPER 2013**

**SCHOOL : TAO NAN PRIMARY SCHOOL**

**SUBJECT : PRIMARY 3 SCIENCE**

**TERM : SA1**

Q1	Q2	Q3	Q4	Q5	Q6	Q7	Q8	Q9	Q10	Q11	Q12	Q13	Q14	Q15	Q16	Q17
3	2	4	4	3	4	4	2	3	3	3	4	3	4	4	2	2

Q18	Q19	Q20
3	4	2

Section B

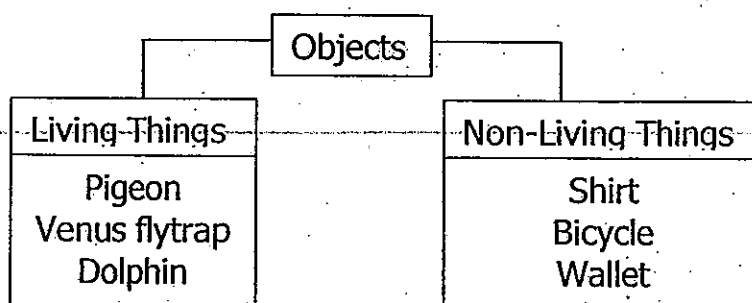
Q21

a)

Activities	Characteristics
(1) A bird lays an egg	C
(2) A frog swims in a pond	B
(3) A chick grows into a hen	A
(4) A cheetah feeds on a deer	D

b) The mouse died because there was a lack of air

Q22)



Q23

a) P: Radio ; R: Ixora

b) No, because the Sunflower is a plant and every plant needs sunlight to grow

Q24

a)

(i)	Water hyacinth is a flowering plant	True	False	Not possible to tell
(ii)	The water plants need sunlight to grow	True	False	Not possible to tell
(iii)	Duckweeds are smaller in size than water lettuce	True	False	Not possible to tell
(iv)	There are more submerged plants than floating plants	True	False	Not possible to tell

b) It shows that living things need food, water and air to survive.

Q25

a) Z

b) X

c) Y

Q26

a) Animal C does not give birth to young and have three body parts

b) Both A and B give birth to live young

c) Animal C has three main body parts while D does not have three main body parts

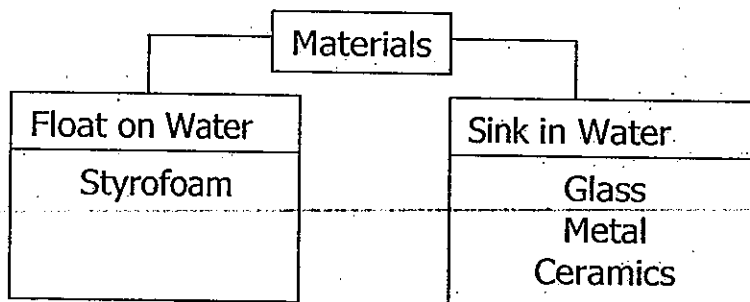
Q27

a) A: Cap; B: Gills

b) The mushroom reproduces by spores

Q28

a)



b) Metal. The anchor is heavy