

ANGLO-CHINESE SCHOOL
(JUNIOR)



SEMESTRAL ASSESSMENT 2 (2013)
PRIMARY 3

SCIENCE

BOOKLET A

Tuesday

29 October 2013

1 hour 30 minutes

Name : _____ ()

Class : P3 _____

INSTRUCTIONS TO PUPILS

DO NOT TURN OVER THE PAGES UNTIL YOU ARE TOLD TO DO SO

Follow all instructions carefully.

There are 25 questions in this booklet.

Answer **ALL** questions.

INFORMATION FOR PUPILS

The total marks for this booklet is 50.

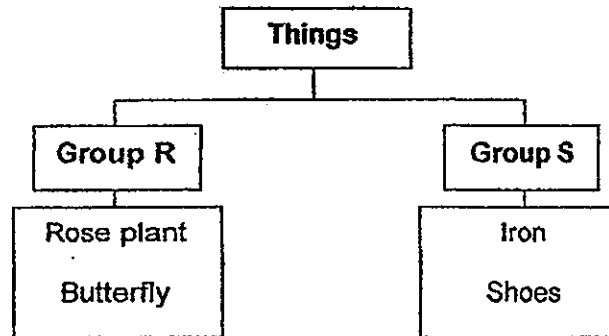
The total time for Booklets A and B is 1 hour 30 minutes.

This question paper consists of 11 printed pages. (Inclusive of cover page)

Section A (50 marks)

For each question from 1 to 25, four options are given. One of them is the correct answer. Choose the correct option (1, 2, 3 or 4) and shade the correct oval on the Optical Answer Sheet (OAS).

- 1 Study the classification chart below.



Which of the following sets of sub-headings best represent groups R and S?

	Group R	Group S
(1)	Can reproduce	Cannot reproduce
(2)	Can make food	Cannot make food
(3)	Does not need air, food and water	Needs air, food and water
(4)	Can move freely from place to place	Cannot move freely from place to place

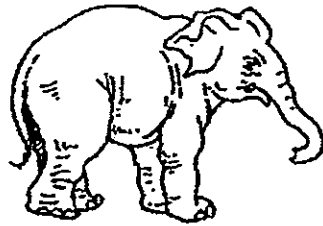
- 2 Which set of objects has been classified wrongly?

- (1) Pot, Ruler, Pencil
- (2) Bed, Pillow, Blanket
- (3) Sofa, Table, Television
- (4) Kiwi, Durian, Strawberry

- 3 Farah observed her pet cat. Which of her observations does not show that her cat is a living thing?

- (1) It drinks milk.
- (2) It has four legs.
- (3) It licks itself to clean its body.
- (4) It runs when it sees stranger.

4 An elephant and a bat may be put in the same group because they _____.



elephant

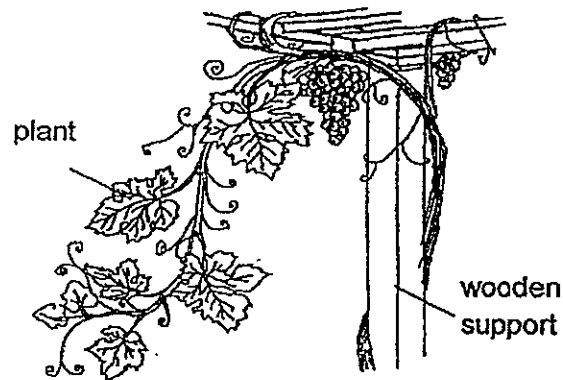


bat

- A breathe in the same way
- B reproduce in the same way
- C have similar outer coverings

- (1) B only
- (2) C only
- (3) A and B only
- (4) A, B and C

5 The diagram below shows a plant growing around a piece of wood.

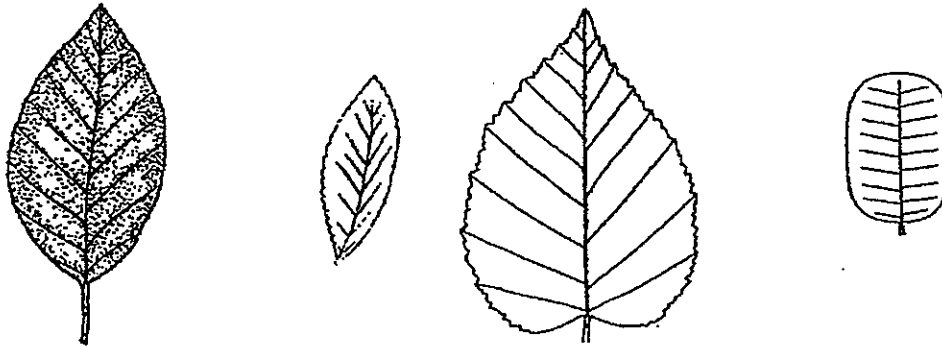


Based on your observation of the diagram above only, which of the following statement/s about the plant is/are true?

- A It is poisonous.
- B It has a weak stem.
- C It is a flowering plant.

- (1) B only
- (2) A and C only
- (3) B and C only
- (4) A, B and C

- 6 Imran collected some sample of leaves from the school garden. The diagrams below show the actual size of the leaves.



Based on your observation of the diagrams only, which characteristic of the leaves can be used to classify the leaves into two groups with the same number of leaves?

- (1) Size
 (2) Colour
 (3) Shape
 (4) Texture
- 7 Shawn found a snail in the park. His brother said it is a plant but Shawn said it is an animal.



Snail

Which of the following best explains why the snail is an animal and not a plant?

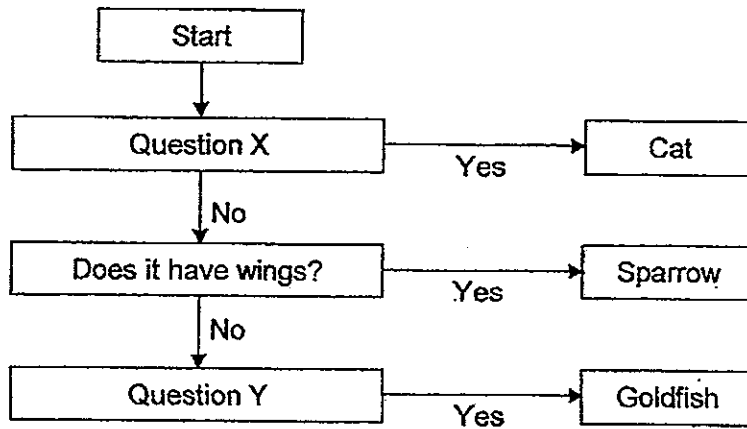
- (1) It can grow.
 (2) It can move by itself.
 (3) It does not make its own food.
 (4) It needs air, food and water to survive.
- 8 The table below shows how some animals can be grouped.

Characteristic	Eats plants only	Eats animals only
Lays eggs	W	X
Gives birth	Y	Z

Tiger can be placed in box _____.

- (1) W
 (2) X
 (3) Y
 (4) Z

9 The chart below shows how some animals are classified.



Which of the following questions could questions X and Y be?

	Question X	Question Y
(1)	Does it lay eggs?	Does it swim?
(2)	Does it give birth to live young?	Does it have gills?
(3)	Does it lay eggs?	Does it have fur?
(4)	Does it give birth to live young?	Does it have feelers?

10 Julie described some characteristics of four animals. Which of the following is the likely description of a spiny anteater?

	Description of Animal
(1)	<ul style="list-style-type: none"> • Lays eggs • Has 6 legs
(2)	<ul style="list-style-type: none"> • Gives birth to live young • Covered with scales
(3)	<ul style="list-style-type: none"> • Lays eggs • Produces milk to feed its young
(4)	<ul style="list-style-type: none"> • Gives birth to live young • Covered with hair

- 11 Look at the two diagrams below.



Bread mould



Mushroom

How are the above organisms similar?

- (1) They can make their own food.
 - (2) They belong to the same group called fungi.
 - (3) They do not need air, food and water to survive.
 - (4) They can move from place to place on their own.
- 12 Which of the following statements about fungi is/are true?
- A Fungi can make their own food.
 - B Some fungi grow on dead matter.
 - C Staghorn fern belongs to the fungi family.
 - D Fungi need only water and warmth to grow.
- (1) B only
 - (2) A and C only
 - (3) A and D only
 - (4) B, C and D only

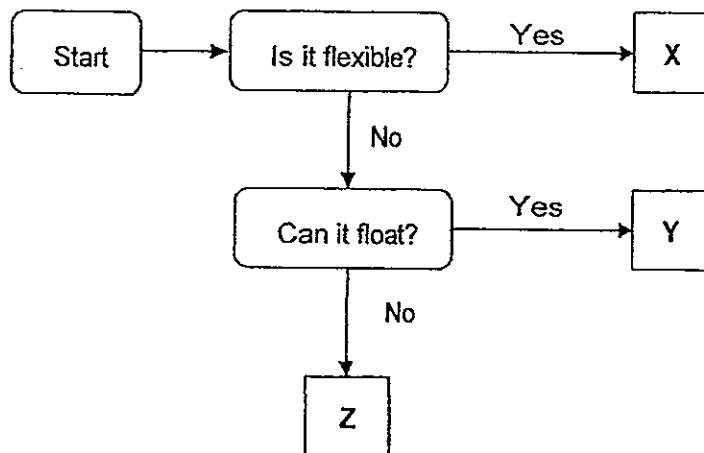
- 13 Lucas wanted to find out if moisture is needed for mould to grow. The table below shows the variables in Lucas' experiment.

Variable	Set-up J	Set-up K
Type of bread	Wholemeal bread	White bread
Amount of water poured on bread	0 ml	5 ml
Location where set-up is placed	Dark cupboard	Dark cupboard
Type of plastic bag	Transparent	Transparent

His teacher told him that his experiment was unfair. Which of the following is the reason why Lucas' experiment is unfair?

- (1) The type of bread used was different.
- (2) The type of plastic bag used was the same.
- (3) Both set-ups were placed in the same place.
- (4) Water was not added to the bread in set-up J.

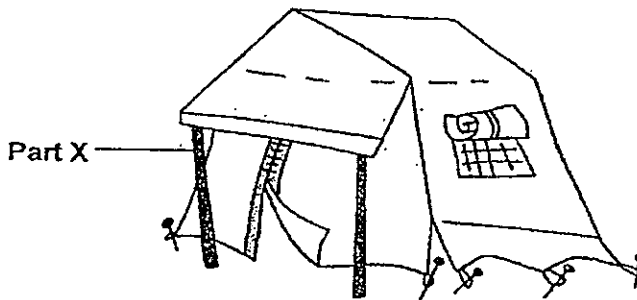
14 Study the flow chart below carefully.



Which of the following objects can be placed at Y?

- (1) Cork
- (2) Knife
- (3) Towel
- (4) Paper

15 The diagram below shows a tent with a part labelled X.



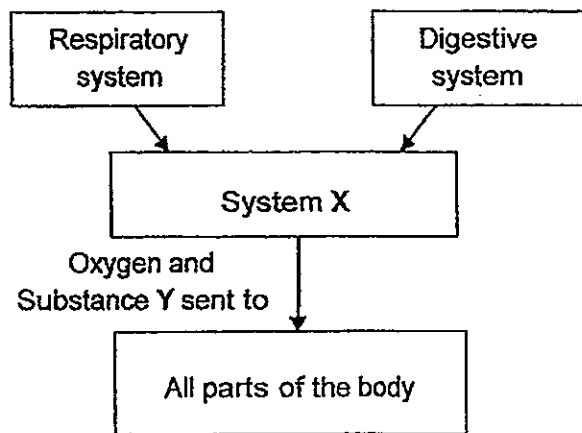
Allan set up the tent with Part X so that the tent will be able to stand upright without falling down. Which of the following properties of Part X will allow him to do so?

- (1) Hard
- (2) Rough
- (3) Strength
- (4) Waterproof

16 A torch can be classified as a system because it _____.

- (1) gives off light
- (2) helps us to see in the dark
- (3) is made up of parts that work together
- (4) has parts made up of different materials

17 Study the chart below.



Which of the following is best represented by X and Y in the chart above?

	X	Y
(1)	Circulatory	Undigested food
(2)	Muscular	Digested food
(3)	Circulatory	Digested food
(4)	Skeletal	Undigested food

18 What is the function of blood in our body?

- A It transports water to all parts of our body.
- B It transports oxygen to all parts of our body.
- C It transports digested food to all parts of our body.

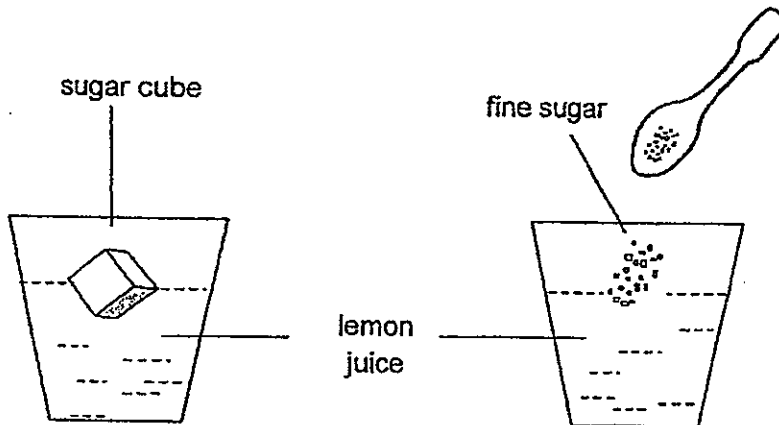
- (1) A only
- (2) A and B only
- (3) B and C only
- (4) A, B and C

19 Which of the following activities will definitely cause the heart to beat faster?

- A Taking a nap
- B Playing soccer in the field
- C Running up many flights of steps

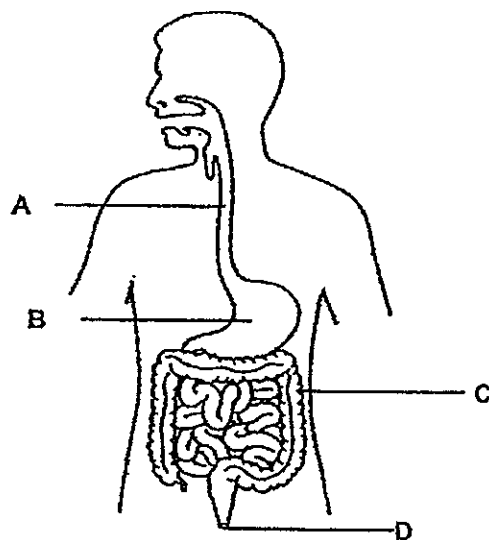
- (1) A only
- (2) B only
- (3) A and C only
- (4) B and C only

- 20 Sarah wanted to explain how digestion takes place in the digestive system. She mixed two types of sugar (sugar cube and fine sugar) into two cups of lemon juice as shown below.



After two minutes, the fine sugar completely mixed with the lemon juice while most of the sugar cube remained. What was Sarah trying to explain about the digestive system?

- (1) The size of food does not affect digestion.
 - (2) Big pieces of food take a shorter time to digest.
 - (3) A sugar cube can be easily digested by the digestive system.
 - (4) Food which is broken down into smaller pieces is easier to digest.
- 21 The diagram below shows the digestive system of the human body.



The part marked _____ removes water from the undigested food.

- (1) A
- (2) B
- (3) C
- (4) D

22 Three children made comments about the human digestive system.

Tom says, "Digestion begins in our stomach."

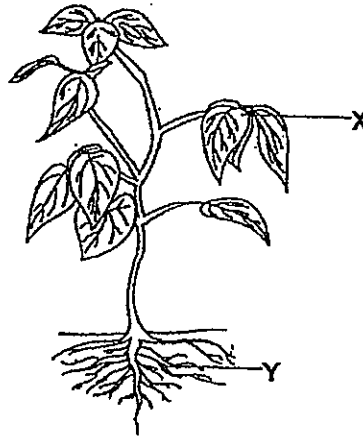
Liwei says, "Most digestion occurs in the small intestine."

Ravi says, "The gullet is a muscular tube that pushes our food down to our stomach."

Who gave correct statements on the human digestive system?

- (1) Tom only
- (2) Tom and Liwei only
- (3) Liwei and Ravi only
- (4) All of them

23 Look at the plant below.



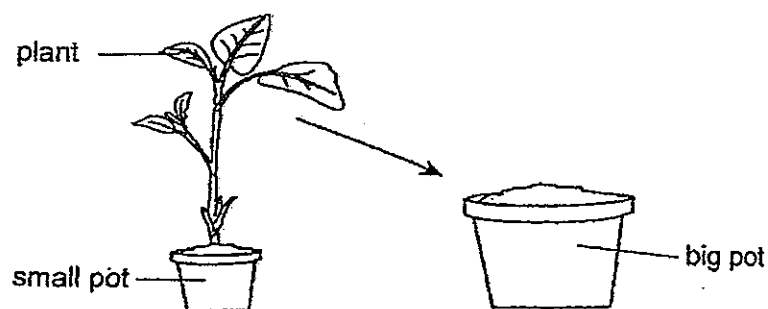
Which of the following correctly describes the function of the parts labelled X and Y?

	X	Y
(1)	Makes food for the plant	Support the branches and leaves
(2)	Makes food for the plant	Absorbs nutrients and water from the soil
(3)	Absorbs nutrients and water from the soil	Makes food for the plant
(4)	Has different shapes and edges	Absorbs nutrients and water from the soil

24 Which of the following is **not** a function of the stem?

- (1) Holds the plant upright.
- (2) Carries water from the leaves to the roots.
- (3) Carries water from the roots to the leaves.
- (4) Carries food made in the leaves to the rest of the plant.

- 25 Mrs Lee pulled out a healthy plant from a pot and transferred it to a bigger pot as shown below.



The plant died after a few days even though she watered it regularly and left it in the garden. What could be the reason?

- (1) The plant has too few leaves.
- (2) The roots have been damaged.
- (3) The bigger pot has too much soil.
- (4) The plant cannot make food in the presence of sunlight

ANGLO-CHINESE SCHOOL
(JUNIOR)



SEMESTRAL ASSESSMENT 2 (2013)
PRIMARY 3

SCIENCE

BOOKLET B

29 October 2013

1 hour 30 minutes

Name : _____ ()

Class : P3 _____

INSTRUCTIONS TO PUPILS

DO NOT TURN OVER THE PAGES UNTIL YOU ARE TOLD TO DO SO

Follow all instructions carefully.

There are 14 questions in this booklet.

Answer **ALL** questions.

INFORMATION FOR PUPILS

The number of marks is given in brackets [] at the end of each question or part-question.

The total marks for this booklet is 40.

The total time for Booklets A and B is 1 hour 30 minutes.

This question paper consists of 12 printed pages. (Inclusive of cover page)

BOOKLET A	/ 50
BOOKLET B	/ 40
TOTAL	/ 90
Parent's signature/ Date:	

Section B (40 marks)

For questions from 26 to 39, write your answers in this booklet. The number of marks available is shown in the brackets [] at the end of each question or part question.

26. The diagrams below show two animals, G and H.



Animal G

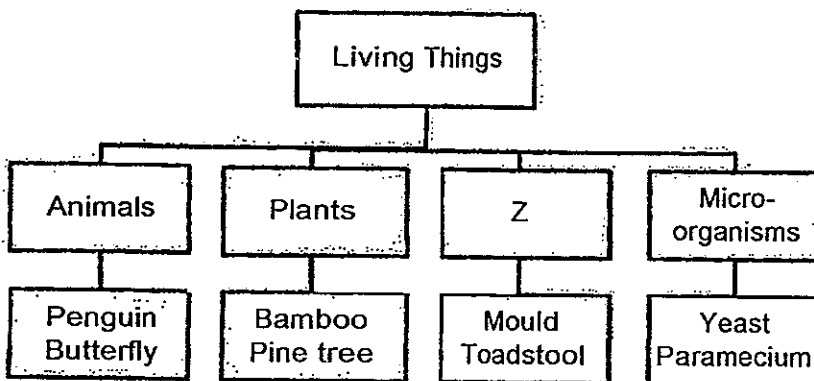


Animal H

(a) Based only on what you can observe in the diagrams, state one similarity between the two animals. [1]

(b) Which group of animals does animal H belong to? Given a reason for your answer. [1]

27. Some living things were grouped using the classification chart shown below.



(a) Give a suitable heading for Group Z. [1]

- (b) Compare the penguin and butterfly. How are they different in the way they move?[1]

- (c) In which group can moss be placed? [1]

- 28 Diagram A below shows the Venus flytrap plant. It is a carnivorous plant that catches and digests insects. Diagrams B and C show the leaves snapping shut after the dragonfly has landed on it.

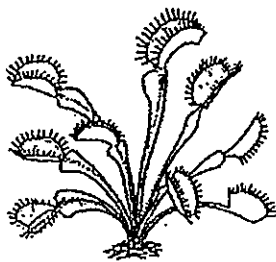


Diagram A
(Venus flytrap plant)

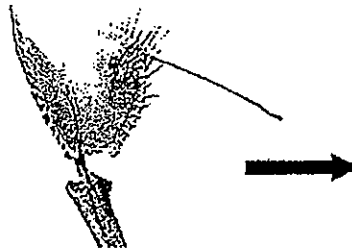


Diagram B
(dragonfly lands on a leaf)



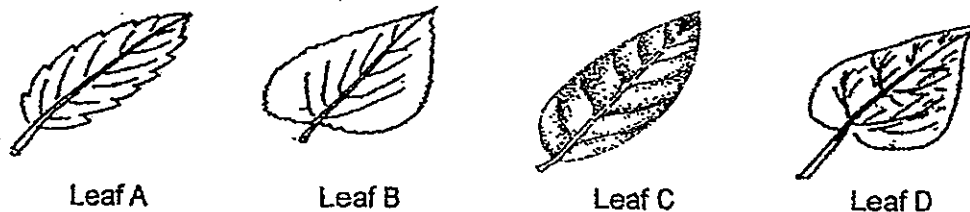
Diagram C
(leaves close)

- (a) Based on diagrams B and C, state one characteristic of living things that is shown by the Venus flytrap plant. [1]

- (b) Caroline bought a Venus flytrap plant. She kept it in her balcony where there was fresh air and sunlight. However, the plant started to wither after a week. Give a reason why this happened. [1]

--

29 The diagram below shows four leaves taken from different plants.



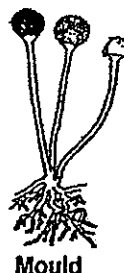
May classified the leaves as shown below.

Group 1	Group 2
Leaf A	Leaf B
Leaf C	Leaf D

(a) State the characteristic which May used to classify the leaves. [1]

(b) Suggest another characteristic that May can use to classify all the leaves. [1]

30 The diagrams below show two living things.

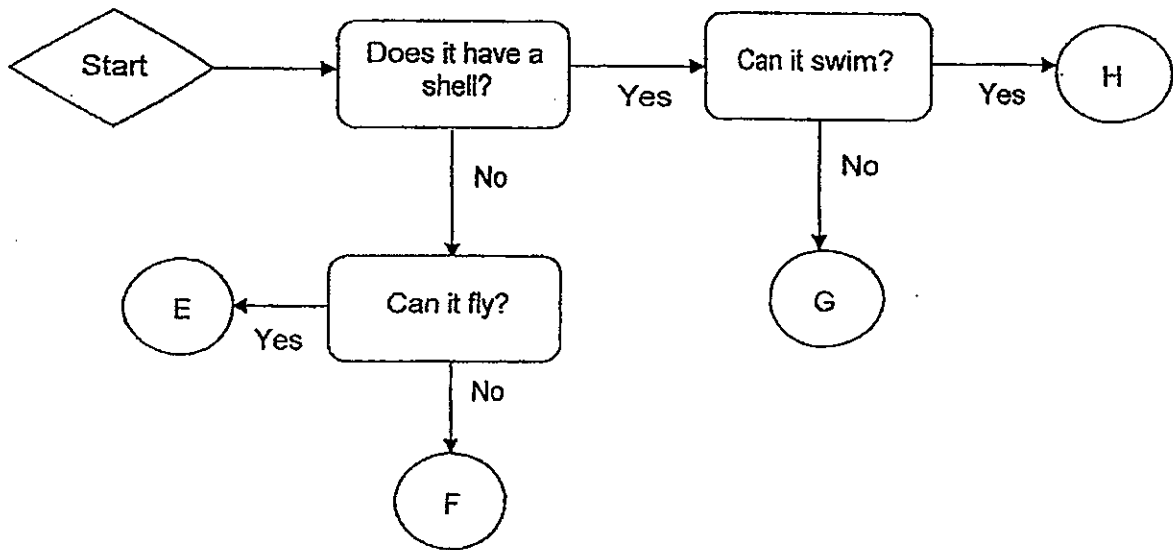


(a) In the pictures above, draw two arrows to point to the parts that enable the living things to reproduce. [1]

(b) How do the above living things get nutrients for their growth? [1]

(c) How may bacteria be useful to human beings? [1]

31 The flow chart below shows the similarities and differences among animals E, F, G and H.



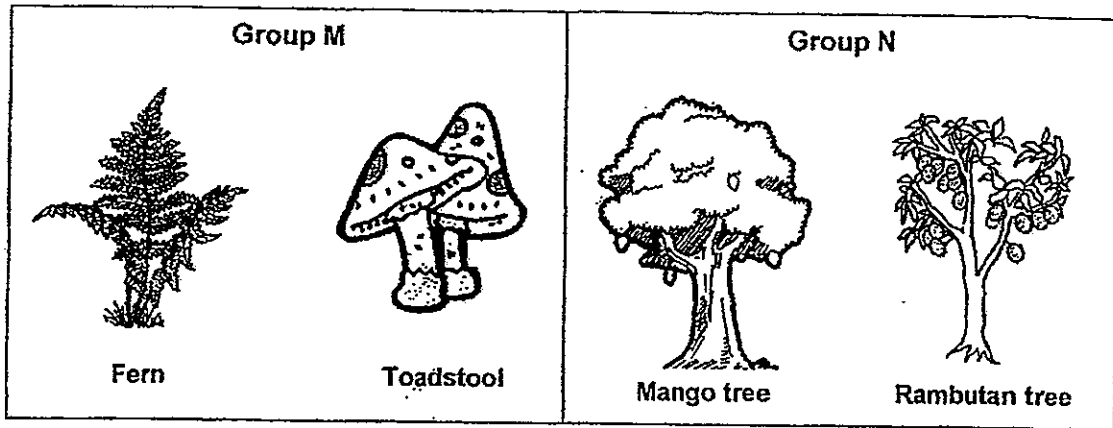
(a) Based on the chart, state a similarity between Animal G and H. - [1]

(b) Based on the chart, state a difference between Animal E and F. [1]

(c) Using the information in the flow chart, match animal E, F, G and H correctly to each of the animals listed in the table below. Write the letters E, F, G and H in the correct blank. [2]

Turtle	Garden Snail	Ostrich	Eagle

32 The pictures below show how Arthur classified some living things.



(a) How were the above organisms grouped? [1]

Group M: _____

Group N: _____

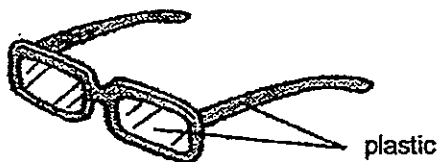
(b) The organisms can be classified in another way. In the table below, write

(i) suitable headings for the new groups E and F. [1]

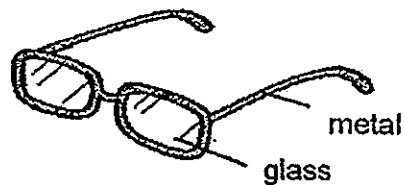
(ii) the names of the organisms for the new classification. [1]

(i)	Group E: _____	Group F: _____
(ii)		

33 Joel is 9 years old. He needs to put on spectacles as he is unable to see the words on the whiteboard clearly.



Spectacles A



Spectacles B

(a) Which pair of spectacles (A or B) should Joel's mother buy for him? Why? [1]

John observed some materials and recorded his observations in the table below.

Properties	Materials			
	A	B	C	D
Strong	Yes	Yes	Yes	Yes
Light	No	No	Yes	Yes
Waterproof	No	Yes	Yes	No

(b) Based on the information given in the table:

(i) state two properties of Material B. [1]

(ii) state one way in which Materials A and D are similar. [1]

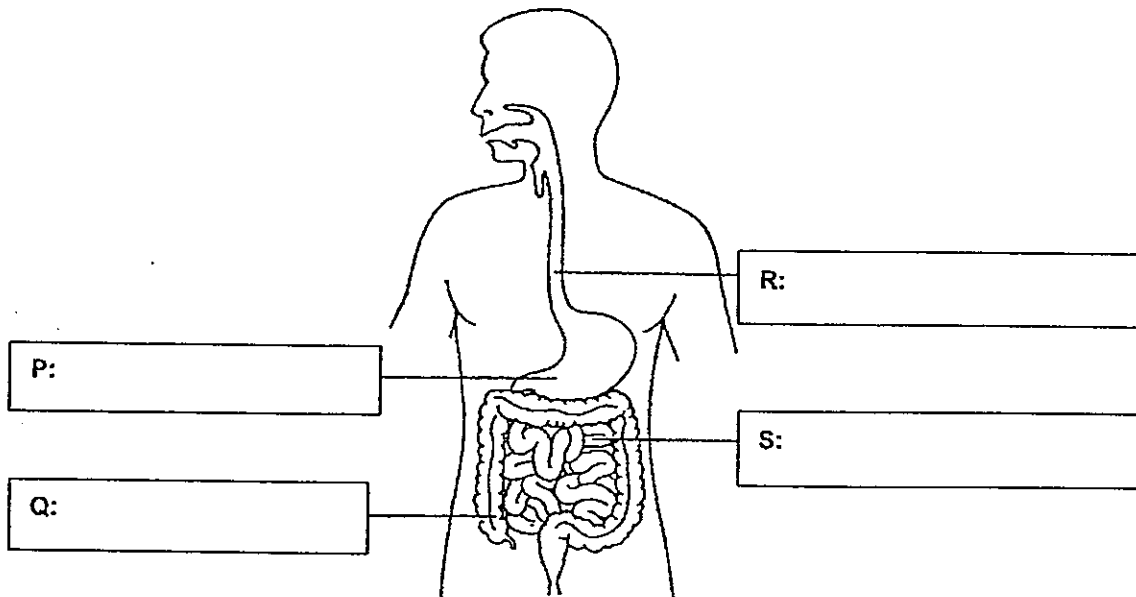
34 Study the two groups of objects.

Group A	Group B
Card	Skirt
Book	T-shirt
Envelope	Shorts
Magazine	Handkerchief

(a) How are the objects grouped? [1]

(b) In which group should "newspaper" be placed? [1]

35 (a) Name the parts of the human digestive system labelled P, Q, R and S. [2]



(b) What happens at Part P? [1]

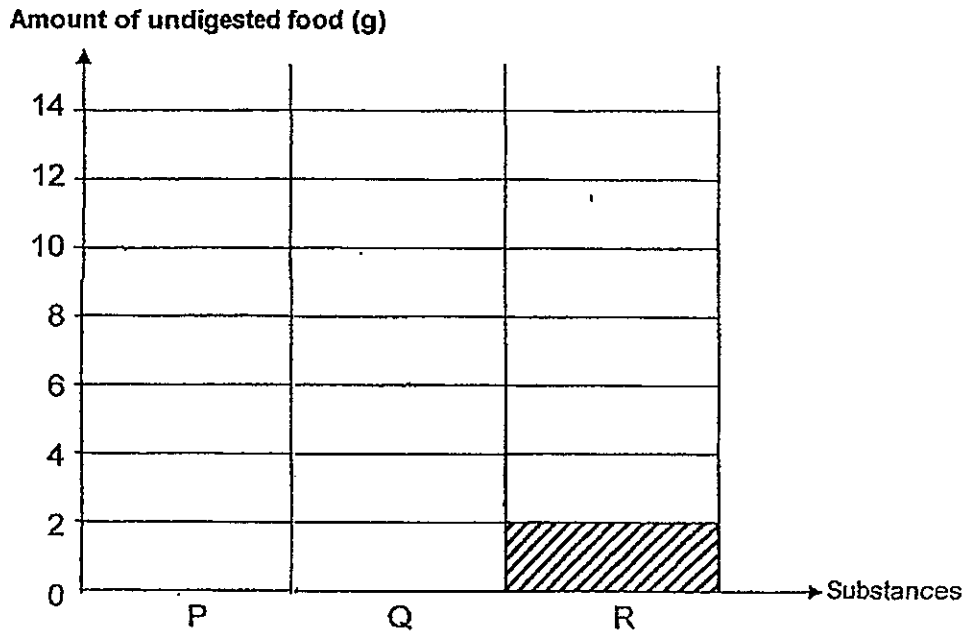
36 Vincent found out that the food he ate contains substances P, Q and R. The table below shows the amount of each type of substance he ate.

Substances	P	Q	R
Amount (g)	10	5	2

He read the following information from books.

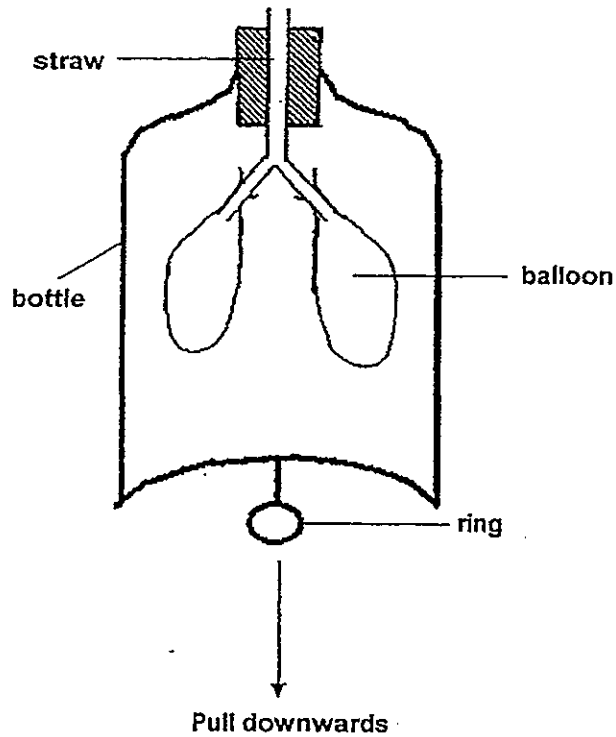
- Substance R cannot be digested.
- Digestion of P starts in the stomach.
- Digestion of Q starts in the mouth and ends in the small intestine.

(a) Complete the bar graph below to show how much food remains undigested as it leaves the gullet. The bar graph for substance R has been done for you. [1]



(b) How does saliva help in digestion? [1]

- 37 The set-up below shows a model representing that of a human body system. When the ring is pulled downwards, air enters the straw and inflates both balloons in the bottle.



- (a) Which human body system does the model above represent? [1]

- (b) Which body parts do the straw and the balloon represent? [1]

Straw : _____

Balloon : _____

- (c) The balloon represented an important part in the human system. What is the function of the part represented by the balloons? [1]

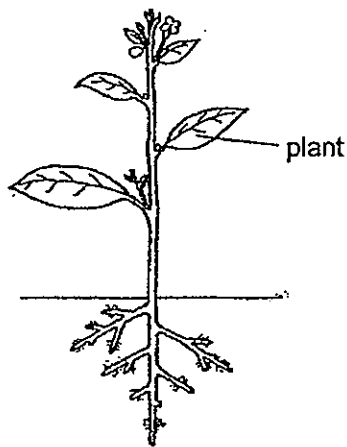
--

38 The diagram below shows two leaves, P and Q.



(a) Describe one way in which leaf P is different from leaf Q. [1]

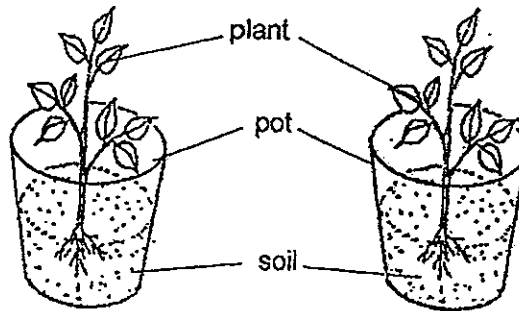
(b) Study the picture of the plant below.



(i) What will happen to the plant if someone plucks off all the leaves? [1]

(ii) State two functions of the roots. [2]

- 39 David wanted to find out if the amount of water given to each plant affects the growth of a plant. He set up two potted plants in his garden as shown below.



- (a) State two variables which need to be kept constant so that the experiment would be fair. [2]

David wanted to find out if plants need light to grow well.

- (b) Suggest what he can do to the current set-up to achieve his new aim. [1]

- (c) What result would David need to observe for him to conclude that light is needed for plants to grow well? [1]



ANSWER SHEET

EXAM PAPER 2013

SCHOOL : ANGLO-CHINESE SCHOOL (JUNIOR)

LEVEL : PRIMARY 3

SUBJECT : SCIENCE

TERM : SA2

BOOKLET A

Q1	Q2	Q3	Q4	Q5	Q6	Q7	Q8	Q9	Q10	Q11	Q12	Q13	Q14	Q15	Q16
1	1	2	4	3	1	3	4	2	3	2	1	1	1	3	3

Q17	Q18	Q19	Q20	Q21	Q22	Q23	Q24	Q25
3	4	4	4	3	3	2	2	2

BOOKLET B

Q26

- (a) Both animals have eyes.
- (b) Birds: animal H has feathers.

Q27

- (a) Fungi
- (b) The penguin walks while the butterfly flies.
- (c) Plants

Q28

- (a) It can respond to changes.
- (b) Caroline did not water the Venus flytrap plant.

Q29

- (a) Shape
- (b) Edge of the leaves.

Q30

(a)



Mushroom



Mould

(b) They feed on dead plants and animals

(c) Make cheese or yoghurt.

Q31

(a) They both have a shell

(b) Animal E can fly while Animal F cannot fly.

(c)

Turtle	Garden snail	Ostrich	Eagle
H	G	F	E

Q32

(a)

Group M: Reproduce from spores

Group N: Reproduce from seeds.

(b)

(i)	Group B: cannot make its own food	Group F: can make its own food.
(ii)	Toadstool	Fern Mango tree Rambutan tree

Q33

(a) A, it is light.

(b)

(i) Material B is strong and waterproof.

(ii) They are both strong.

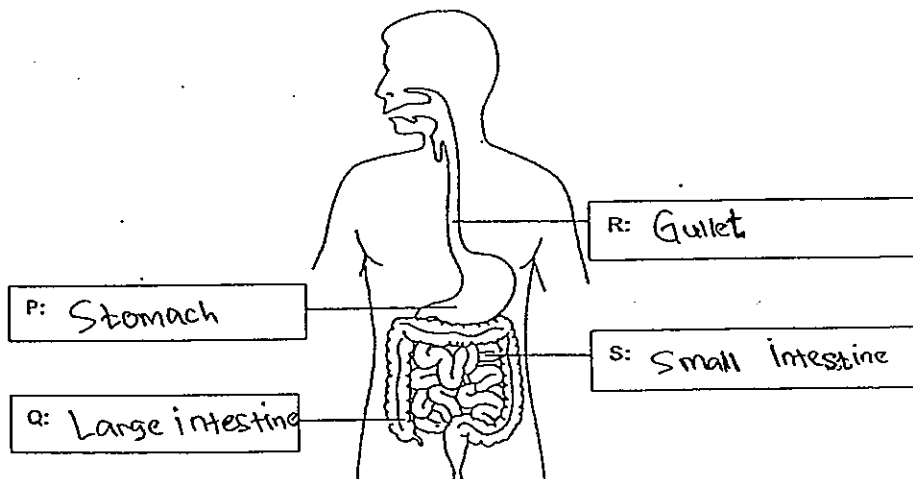
Q34

(a) The materials they are made of.

(b) Group A.

Q35

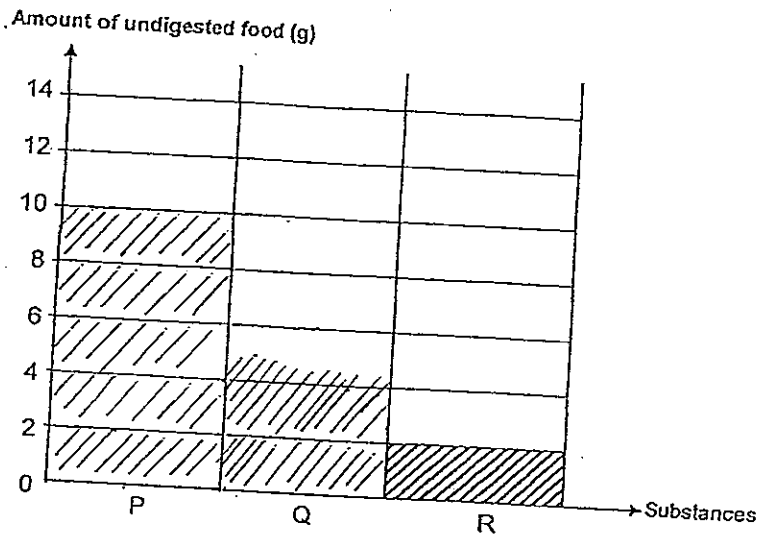
(a)



(b) Food turns semi-liquid and digestive juices are added there.

Q36

(a)



(b) It helps to soften the food.

Q37

(a) The respiratory system \

(b) Straw: Windpipe

Balloon: Lungs

(c) It takes in oxygen and removes carbon dioxide.

Q38

(a) Leaf P is loped shaped while leaf Q is round shaped.

(b)

(i) The leaves is not able to make food for the roots and after a few days, the plant will die.

(ii) The roots absorb water and nutrients from the ground and hold the plant firmly to the ground.

Q39

(a) The type of soil and the place needs to be kept constant.

(b) He can put one of the potted plants in the dark.

(c) The plant given light grew well but the other plant without light will die.

