

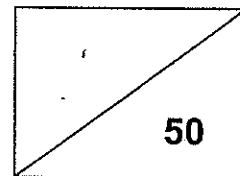
**PRINCESS ELIZABETH PRIMARY SCHOOL
CONTINUAL ASSESSMENT 1, 2008
SCIENCE
PRIMARY 3**

NAME: _____ (...)

CLASS: PRIMARY 3 (...)

DATE: 6 March 2008

DURATION: 45 mins



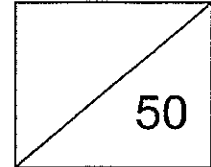
Parent's Signature

**PRINCESS ELIZABETH PRIMARY SCHOOL
CONTINUAL ASSESSMENT 1, 2008
SCIENCE
PRIMARY 3**

Name: _____ ()

Class: Primary 3 ()

Date: _____



Duration: 45 mins

Section A: (15 X 2 marks)

Of the four options given, choose the most suitable answer and write its number in the brackets provided on the answer sheet given.

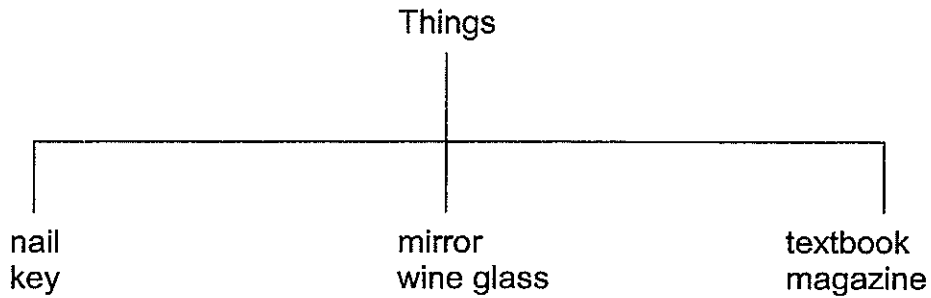
1. In the second table given below, which row has an item that is **not** grouped correctly?

Group 1	Group 2	Group 3
Orange	Lion	Spoon
Mango	Parrot	Pot

	Group 1	Group 2	Group 3
(1)	Pear	Zebra	Bowl
(2)	Guava	Bee	Plate
(3)	Rambutan	Mynah	Knife
(4)	Pineapple	Seal	Panda

()

2. The diagram below shows three groups of things.



These things are grouped according to _____.

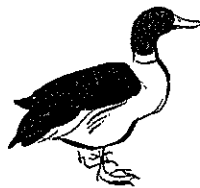
- (1) the way they look
- (2) what they are made of
- (3) how they can be used
- (4) their colour

()

3. Which row in the table given below classifies all the **three** items **correctly**?



A



B

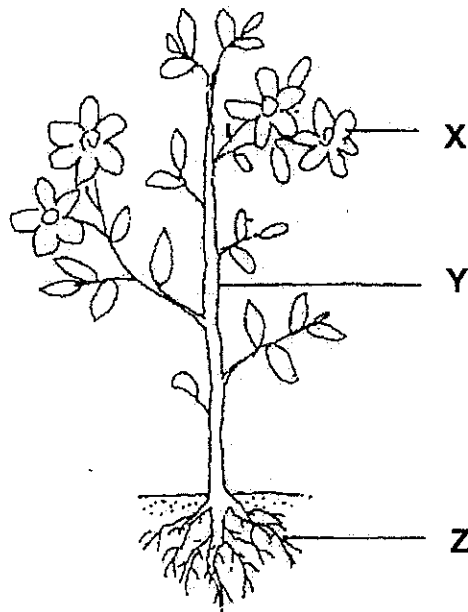


C

	A	B	C
(1)	Living thing	Non-living thing	Living thing
(2)	Non-living thing	Living thing	Non-living thing
(3)	Non-living thing	Living thing	Living thing
(4)	Living thing	Living thing	Living thing

()

Look at the picture below and answer questions 4 and 5.



4. What are **X** and **Z** known as?

- | | <u>X</u> | <u>Z</u> |
|-----|----------|----------|
| (1) | stem | fruit |
| (2) | flower | roots |
| (3) | leaf | stem |
| (4) | fruit | roots |

()

5. Which **one** of the following statements below describes the part labeled **Y** correctly?

- (1) It is usually found under the ground.
- (2) It supports the branches and leaves.
- (3) It hangs in the air.
- (4) It takes in mineral salts for the plants.

()

6. Look at the table given below carefully. What can **X** be?

Age (years old)	X's weight (kg)
0	2
2	2
4	2
6	2

X can be a _____.

- (1) boy
- (2) girl
- (3) hamster
- (4) robot

()

7. Which of the following animals **give birth** to their young?

- (1) parrot and snake
- (2) ostrich and monkey
- (3) penguin and zebra
- (4) giraffe and man

()

8. Animals can be grouped according to _____.

- (A) the way they move
- (B) the way they reproduce
- (C) the food they eat
- (D) living and non-living things

- (1) D only
- (2) A and B only
- (3) A, B and C only
- (4) A, B, C and D

()

9. Which **one** of the following statements is **incorrect**?

When a living thing grows, it may _____.

- (1) become bigger
- (2) become taller
- (3) not respond to changes
- (4) not look the same

()

10. Which **one** of the following statements about the cat and the vase is **correct**?



- (A) The cat can move by itself but the vase cannot move by itself.
- (B) The cat cannot move by itself but the vase can move by itself.
- (C) The cat can die but the vase cannot die.
- (D) The cat cannot die but the vase can die.

- (1) A only
- (2) A and C only
- (3) B and D only
- (4) A, B and C only

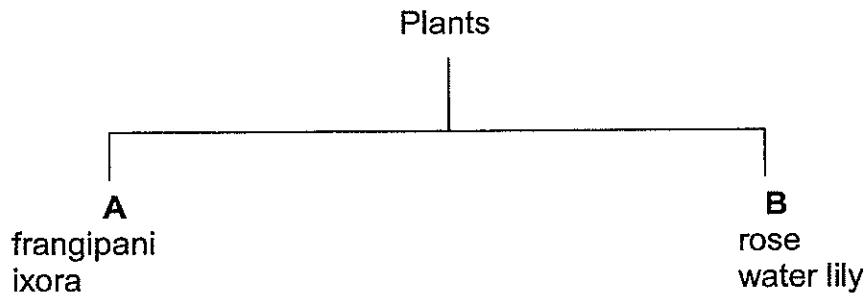
()

11. The main stem of a tree is called the _____.

- (1) bark
- (2) plant
- (3) shrub
- (4) trunk

()

12.



What can **A** and **B** be?

A

- (1) Flowering plants
- (2) Poisonous plants
- (3) Flowers that grow in a bunch
- (4) Land plants

B

- Non-flowering plants
- Non-poisonous plants
- Flowers that grow singly
- Water plants

()

13. Which **one** of the following animals does **not** need to eat other animals to stay alive?

- (1) cat
- (2) caterpillar
- (3) snake
- (4) tiger

()

14. Meili touched the leaves of a mimosa plant and they closed.

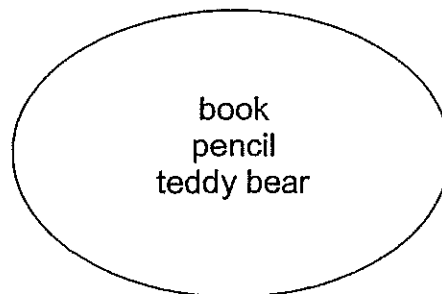


Which **one** of the following characteristics of living things was shown by the plant?

- (1) Living things die.
- (2) Living things reproduce.
- (3) Living things respond to changes.
- (4) Living things need air, food and water.

()

15.



Which of the following pairs belongs to the above group?

- (1) fish and bowl
- (2) ruler and eraser
- (3) snail and grass
- (4) lalang and worm

()

**PRINCESS ELIZABETH PRIMARY SCHOOL
CONTINUAL ASSESSMENT 1, 2008
SCIENCE
PRIMARY 3**

Name: _____ ()

Marks:

20

Class: Primary 3 ()

Date: _____

Section B:

Read the questions carefully and write the correct answer on the blanks provided.

16. Compare a dolphin and a millipede.



a dolphin



a millipede

(a) State **two similar** characteristics of the above living things. (2m)

(i) _____

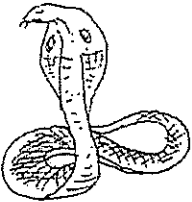


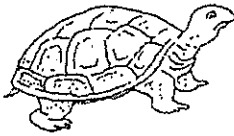
(ii) _____

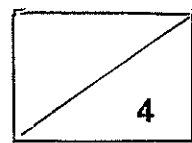
(b) State **one difference** between the above living things in terms of how they move. (2 m)

A dolphin moves with its _____ but a millipede moves with its _____

4

17. Name the outer coverings of the following animals. (4m)

Animals	Outer coverings
 (a) cobra	(a) _____
 (b) eagle	(b) _____
 (c) sheep	(c) _____
 (d) tortoise	(d) _____



18. Look at the two leaves given below.



Leaf A



Leaf B

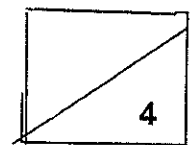
(a) In what way are they **different** in shape? (2m)

1/

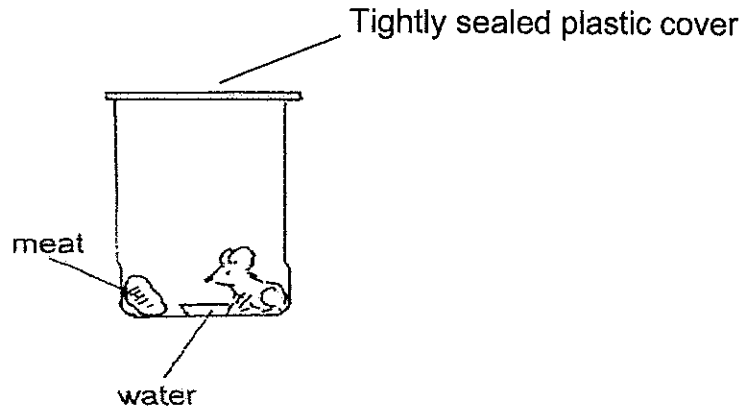
(b) Name **two other ways** in which leaves of different plants can be different besides their shape? (2m)

(i) _____

(ii) _____



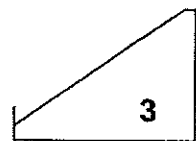
19. In the picture given below, a mouse is put into a container which is tightly sealed. A piece of meat and some water is put into the container.



- (a) Suggest **one** way to keep the animal alive. (1m)

- (b) Give **one** reason for your answer in (a). (1m)

- (c) A mouse can have young. We say it can _____ (1m)



20. Look at the things in each group. **Circle** the thing that should not be in the group. Then fill in the blanks to explain why. (5m)

Group A

(a)

apple	papaya	durain	nail
-------	--------	--------	------

The _____ should not be in the group.

It is not a _____.

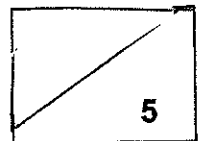
Group B

(b)

orchid	hibiscus	rafflesia	moss
--------	----------	-----------	------

The _____ should not be in the group.

It is not a _____.



=====End of Paper=====

Have you checked your answers?

Set by J. K

