



Anglo-Chinese School (Primary)

**PRACTICE PAPER CA1 2016  
SCIENCE  
PRIMARY THREE  
(BOOKLET A and B)**

Name: \_\_\_\_\_ (    )

Class: Primary 3 \_\_\_\_\_

Date: \_\_\_\_\_

Duration of paper: 1h 15 min



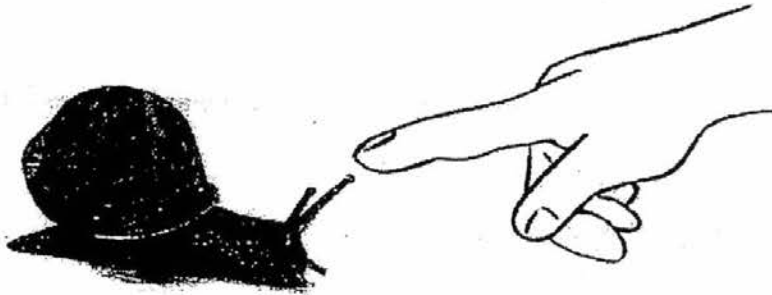
For each of the following questions from 1 to 15, four options are given. One of them is the correct answer. Make your choice (1, 2, 3 or 4). Shade the correct oval (1, 2, 3 or 4) on the Optical Answer Sheet. [30 marks]

---

- 1 Jian Ming found an organism which has scales, lays eggs and breathes through its gills. Which group of animals does it most likely belong to?

- (1) fish
- (2) birds
- (3) insect
- (4) mammals

- 2 David touched a snail as shown in the diagram below.

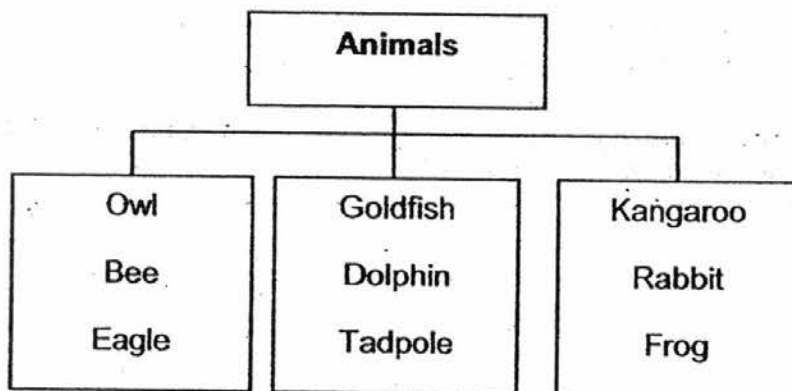


The snail pulled its head into its shell. What could David conclude about living things from his observation?

- (1) Living things grow.
- (2) Living things reproduce.
- (3) Living things need air, food and water.
- (4) Living things respond to their surroundings.

(Go on to the next page)

- 3 Joe classified some animals into three groups as shown below.



He classified the animals according to \_\_\_\_\_.

- (1) how they move
  - (2) where they live
  - (3) the way they reproduce
  - (4) their outer body covering
- 4 Which one of the following statements about mushrooms and ferns is correct?
- (1) Both organisms produce flowers.
  - (2) Both organisms are plants.
  - (3) Both organisms reproduce by spores.
  - (4) Both organisms make their own food.
- 5 Matthew listed down some characteristics of bacteria and fungi. Which characteristic of bacteria and fungi is correct?

	<b>Bacteria</b>	<b>Fungi</b>
(1)	Do not make its own food	Make its own food
(2)	Can be seen without using a microscope	Can only be seen using a microscope
(3)	Harmful to humans	Useful to humans
(4)	Come in different shapes and sizes	Come in different shapes and sizes

(Go on to the next page)

6 Peter, Victor, Calvin and Roger made the following comments.

- Peter : All bacteria are harmful.  
Victor : Bacteria are not living things.  
Calvin : Bacteria cannot reproduce.  
Roger : Bacteria can respond to changes.


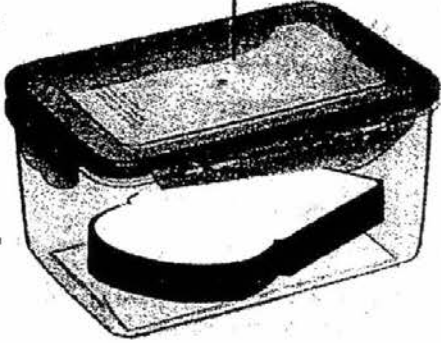


Whose comment is correct?

- (1) Peter  
(2) Victor  
(3) Calvin  
(4) Roger

7 Which one of the following animals does not have the same kind of outer covering as the others?

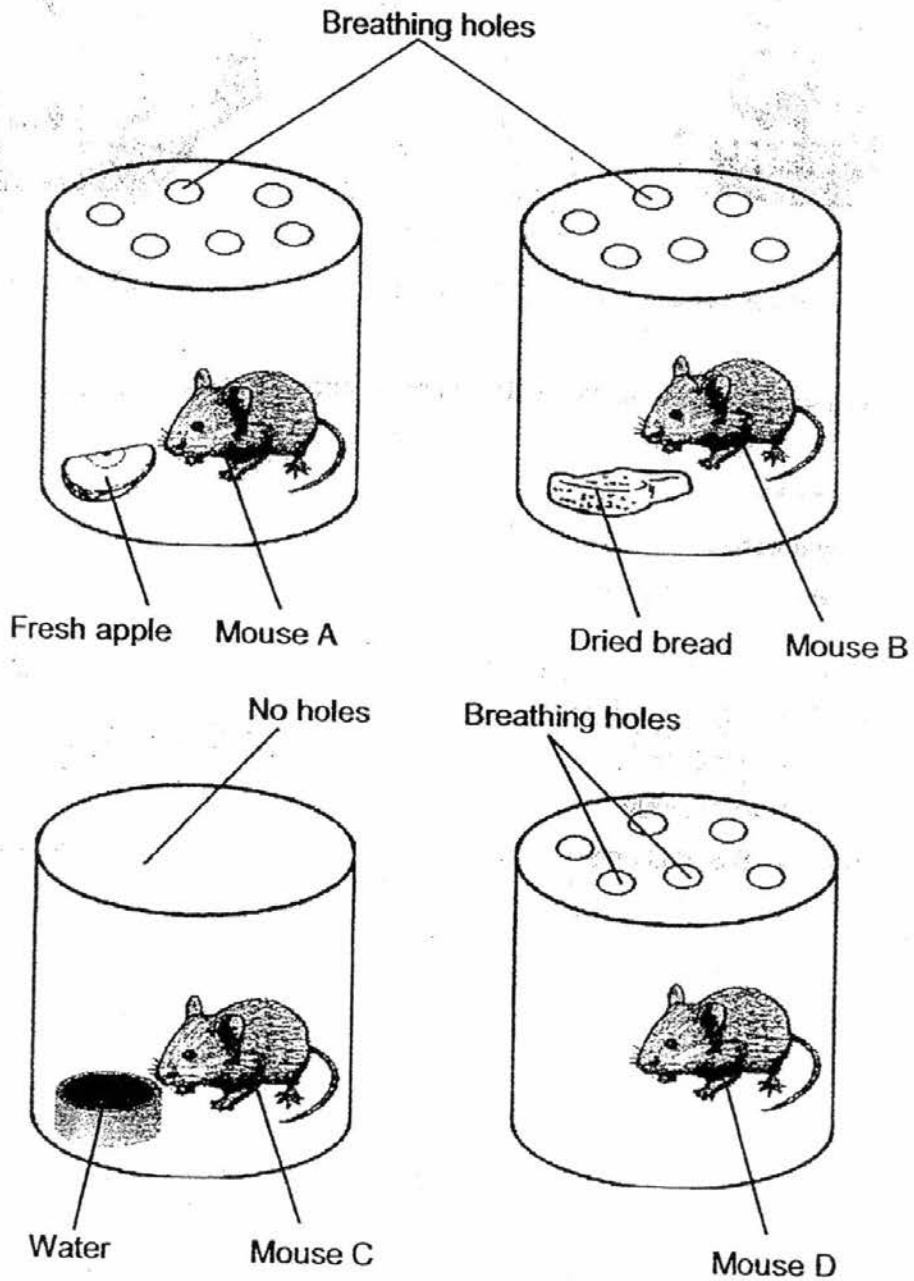
- (1) ant  
(2) beetle  
(3) snake  
(4) grasshopper

- 8 Four slices of bread were left undisturbed for a week as shown below. In which set-up would bread mould most likely appear first?

<p>(1)</p>  <p>Moist bread kept near the window</p>	<p>(2)</p> <p>Air-tight container</p>  <p>Toasted bread kept in the refrigerator</p>
<p>(3)</p>  <p>Untoasted bread kept in the freezer</p>	<p>(4)</p>  <p>Toasted bread kept near the window</p>

- 9 Study each of the following set-ups. Mouse A and Mouse B are given a fresh supply of food daily, while Mouse C and Mouse D were left undisturbed throughout the experiment. Which mouse would survive the longest?

- (1) A
- (2) B
- (3) C
- (4) D



(Go on to the next page)

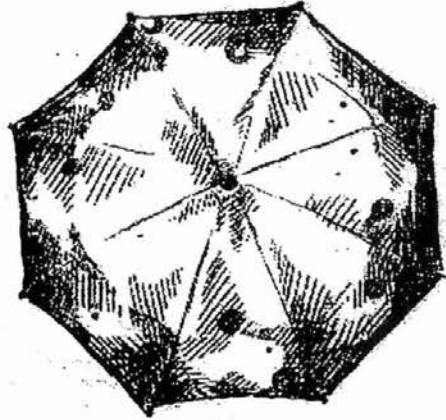
10 Study the following items carefully.



Plastic bag



Raincoat



Umbrella

Materials used to make the items shown above should be \_\_\_\_\_.

A: flexible

B: waterproof

C: able to sink in water

(1) C only

(2) A and B only

(3) B and C only

(4) A, B and C only

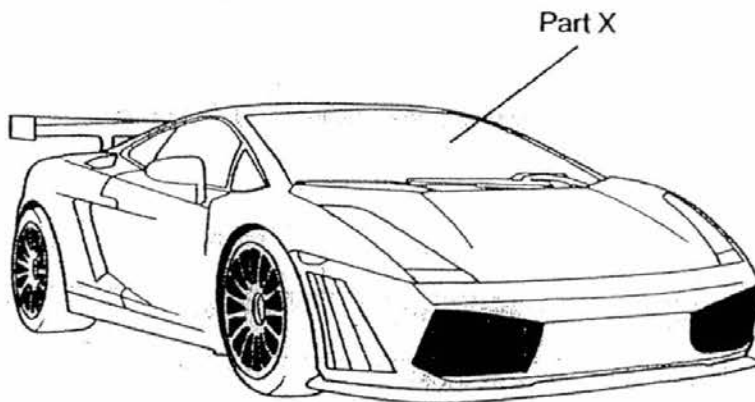
(Go on to the next page)



- 11 The table below shows the properties of materials A, B, C and D.

Material	Properties
A	<ul style="list-style-type: none"><li>• Flexible</li><li>• Allows most light to pass through</li></ul>
B	<ul style="list-style-type: none"><li>• Flexible</li><li>• Does not allow any light to pass through</li></ul>
C	<ul style="list-style-type: none"><li>• Not flexible</li><li>• Allows most light to pass through</li></ul>
D	<ul style="list-style-type: none"><li>• Not flexible</li><li>• Does not allow any light to pass through</li></ul>

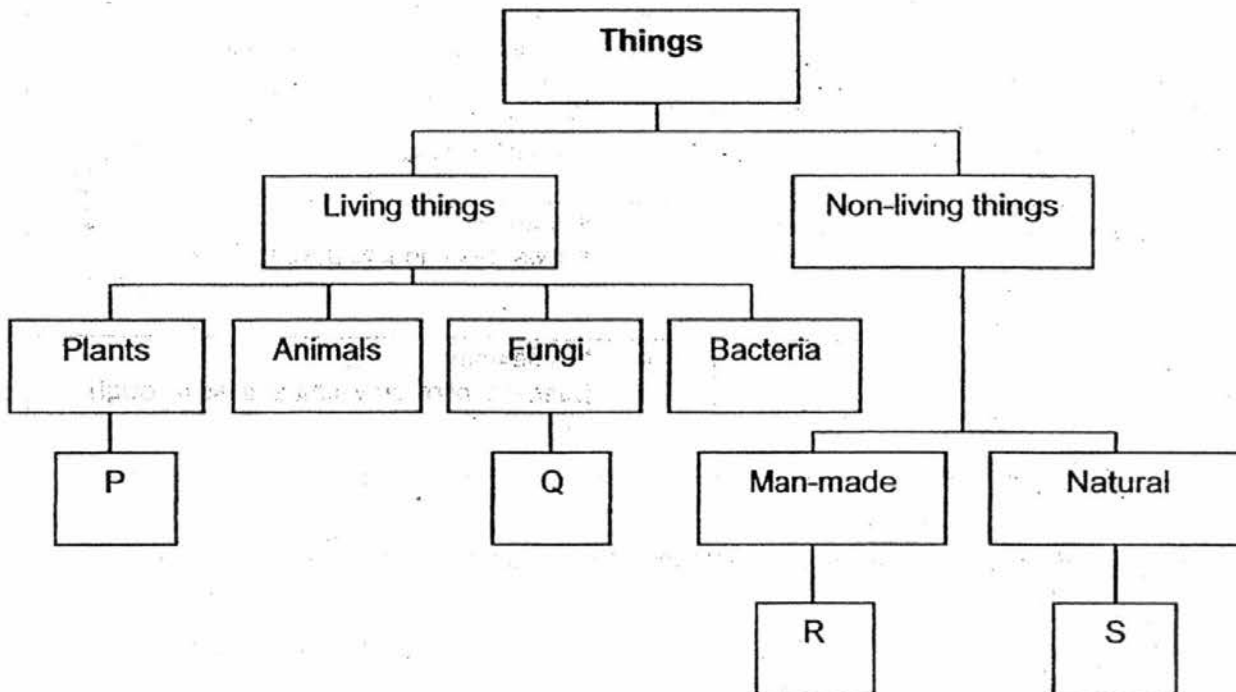
Which material is most suitable for making Part X of a car as shown in the diagram below?



- (1) A
- (2) B
- (3) C
- (4) D

(Go on to the next page)

12 Study the classification diagram below carefully.



Which one of the following best represents P, Q, R and S?

	P	Q	R	S
(1)	Fern	Bread mould	Plastic	Wood
(2)	Grass	Moss	Wood	Metal
(3)	Bread mould	Fern	Metal	Glass
(4)	Fern	Bread mould	Glass	Plastic

(Go on to the next page)

- 13 Jerry classified four things A, B, C and D according to three different characteristics. He wanted to find out which of these is/are non-living things.

Things	Needs air, food and water?	Lays eggs?	Responds to changes around it?
A	Yes	Yes	Yes
B	No	No	Yes
C	Yes	No	Yes
D	No	No	No

Which of these is/are definitely non-living things?

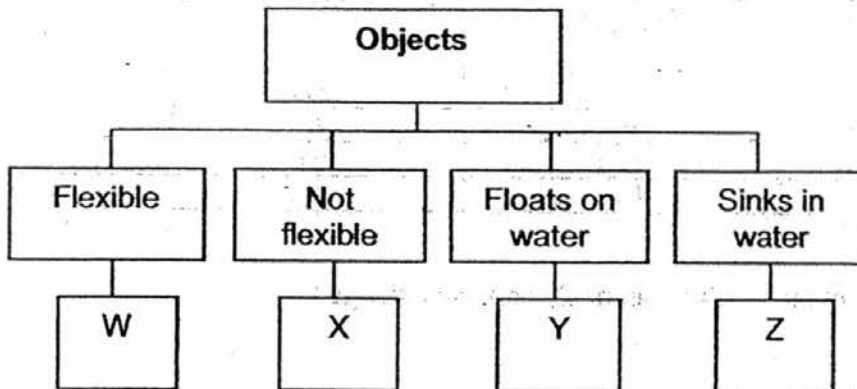
- (1) A only  
 (2) C only  
 (3) A and C only  
 (4) B and D only
- 14 Tim conducted several tests on three materials, E, F and G. He recorded his observations in the table below.

	E	F	G
Bends easily?	Yes	No	Yes
Absorbs water?	Yes	No	No
Breaks easily?	No	Yes	No

Which one of the following shows what materials E, F and G are likely to be?

- |     | E      | F      | G      |
|-----|--------|--------|--------|
| (1) | Metal  | Rubber | Wood   |
| (2) | Metal  | Glass  | Rubber |
| (3) | Glass  | Rubber | Metal  |
| (4) | Fabric | Glass  | Rubber |

15 Study the classification diagram below carefully.



Which one of the following best represents W, X, Y and Z?

	W	X	Y	Z
(1)	Glass bottle	Rubber band	Plastic bag	Metal key
(2)	Rubber hose	Wooden chopstick	Styrofoam board	Glass marble
(3)	Styrofoam board	Metal key	Iron nail	Eraser
(4)	Eraser	Drinking straw	Cork	Metal coin

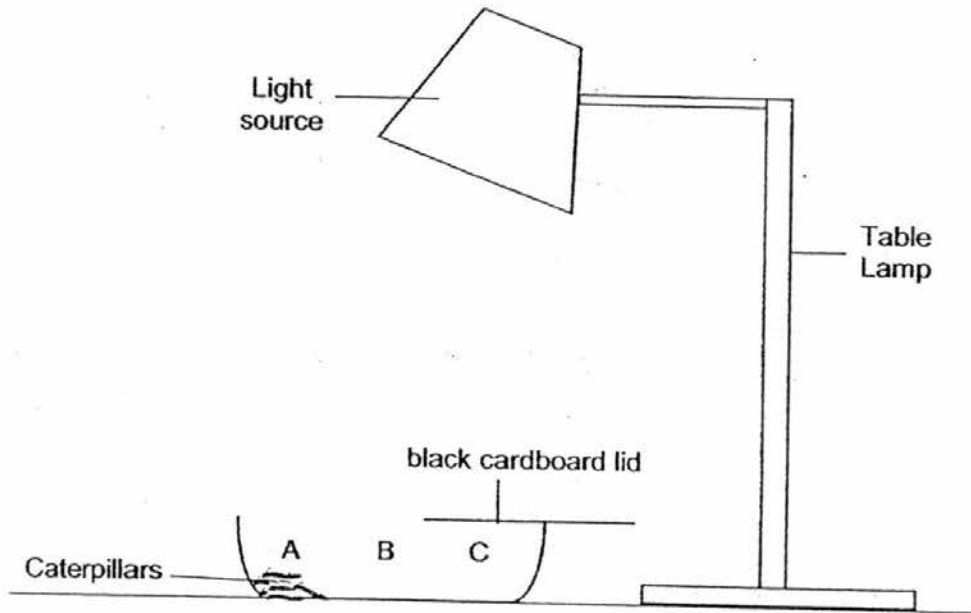
End of Booklet A

Please go on to Booklet B

For questions 16 to 22, write your answers in the spaces provided in this booklet. The number of marks available is shown in the brackets [ ] at the end of each question or part question.

(20 marks)

- 16 Joe carried out an experiment as shown in the set-up below. He wanted to find out if caterpillars prefer a bright or dark environment. He placed some caterpillars at position A in a partially-covered box. Next, he switched on the light source and observed the caterpillars for ten minutes.



After ten minutes, he observed that all the caterpillars had moved over to position C.

- (a) Based on his observation from the above set-up, what can Joe conclude about caterpillars from his experiment? [1]

---

- (b) Write down one characteristic of living things that can be observed in the above experiment [1]

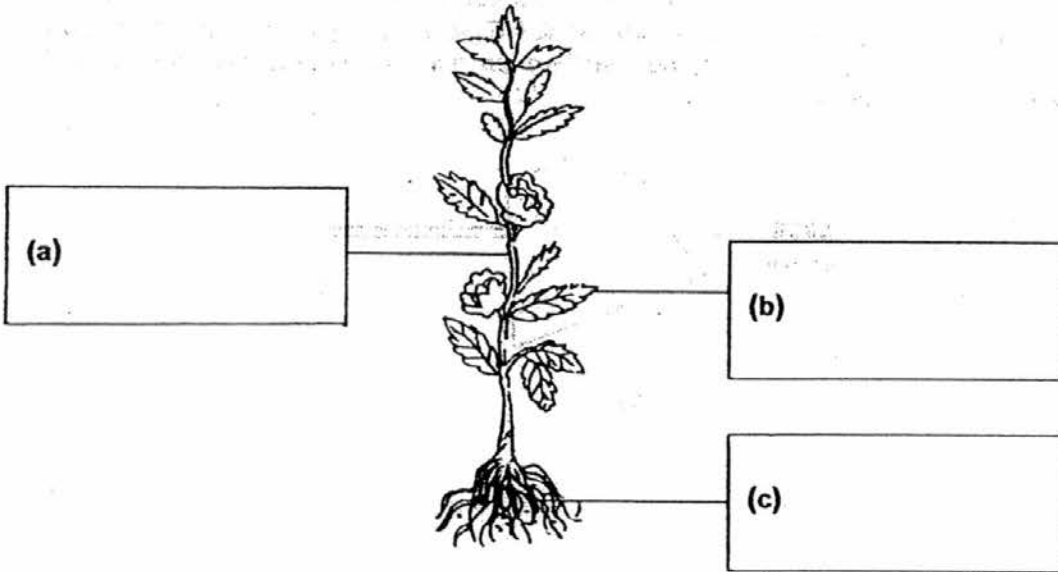
---

(Go on to the next page)

Score	
	2

17 Label the parts of the plant below.

[3]



18 Study the statements in the table below carefully. Put a tick (✓) in the correct boxes to indicate if the statements are true or false.

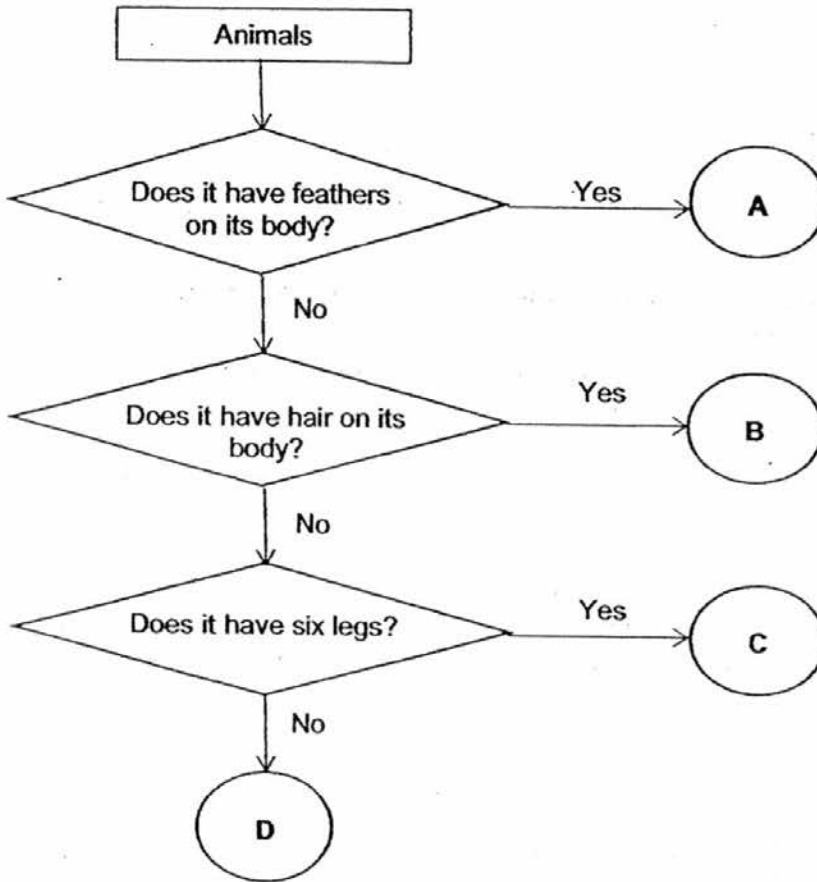
[2]

	Statements	True	False
(a)	Mushrooms grow well in dry places only.		
(b)	The spores of mushrooms can be found on the underside of their caps.		
(c)	Mushrooms are able to make their own food.		
(d)	Some mushrooms can be eaten.		

(Go on to the next page)

SCORE	5
-------	---

19 Study the flowchart below carefully.



(a) The letters A, B, C and D in the flowchart represent the animals shown in the table below. Using the information in the flowchart, write the letters A, B, C or D in the correct boxes given below. [2]

Animals	Letters
Butterfly	
Ostrich	
Tiger	
Millipede	

(b) Write down one characteristic of mammals that is not in the flowchart. [1]

---

(Question 19 continues on page 5)

SCORE	3
-------	---

- (c) Name one animal that lives on both land and in water and breathes through its lungs when it is an adult. [1]

---

- 20 Kenneth classified four different materials P, Q, R and S according to their properties as shown in the table below.

Material Property	P	Q	R	S
Breaks easily ?	No	No	Yes	No
Flexible ?	No	Yes	No	Yes
Absorbs water ?	No	No	No	Yes
Waterproof ?	Yes	Yes	Yes	No

- (a) Based on the table above only, which material is most suitable for making a towel? [1]

---

- (b) Based on the table above only, state one difference between material P and material Q. [1]

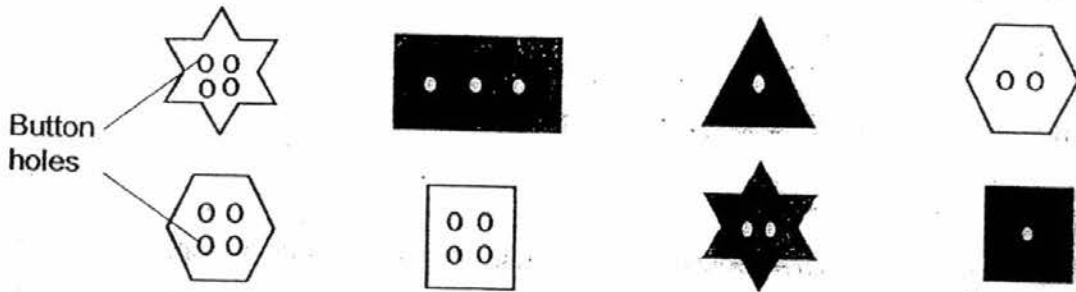
---

(Go on to the next page)

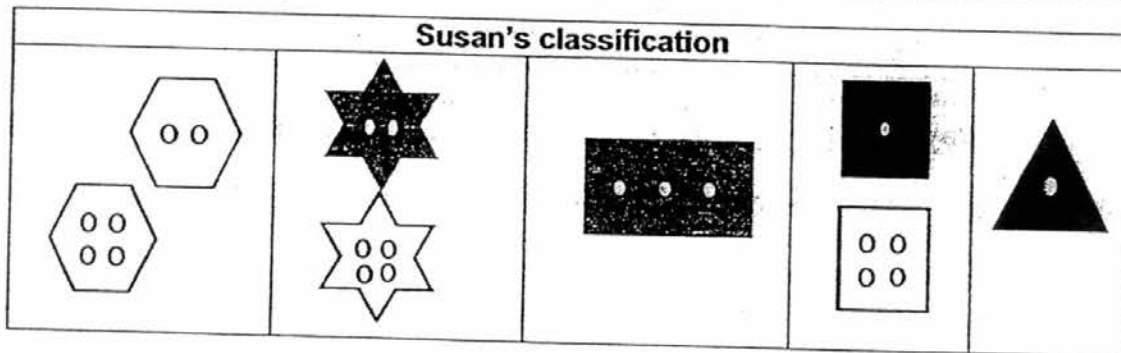
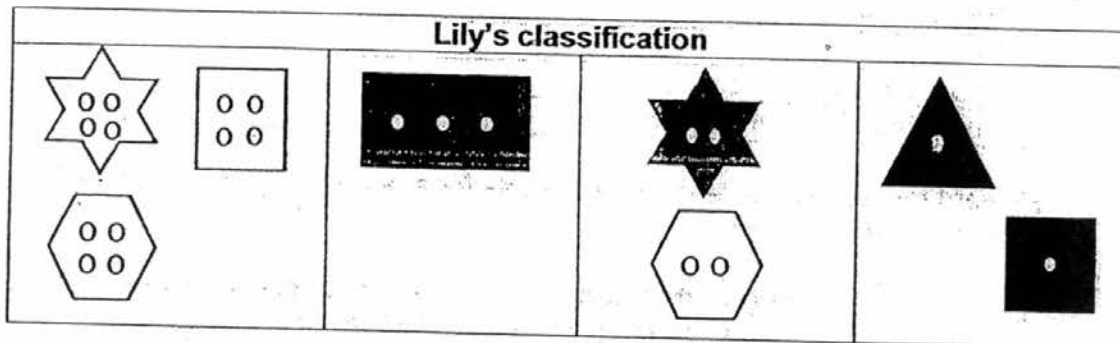
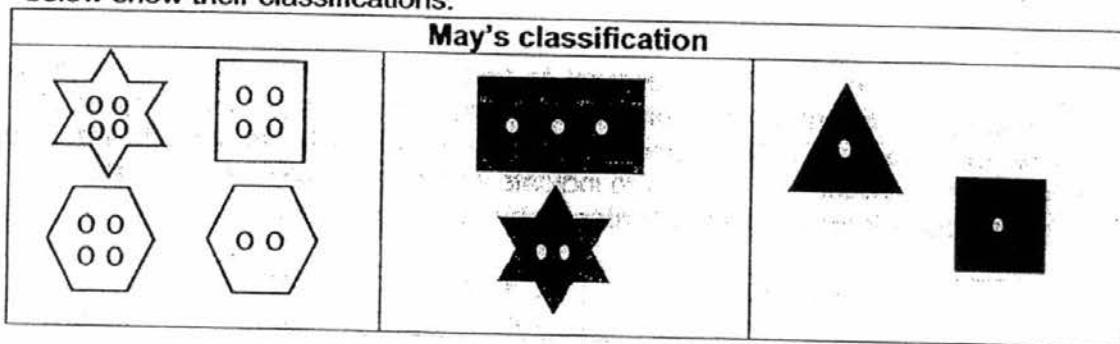
SCORE	
	3



- 21 May, Lily and Susan were each given a set of eight buttons as shown below.



They were then asked to classify the buttons into different groups. The diagrams below show their classifications.



- (a) What characteristic did May use in her classification?

[1]

(Question 21 continues on page 7)

SCORE	
	1

(b) What characteristic did Lily use in her classification? [1]

---

(c) What characteristic did Susan use in her classification? [1]

---

(d) Name one other characteristic you can use to classify the buttons into three different groups. [1]

---

22 Richard carried out an experiment to find out whether a Plant X grows better when given 50 ml of water or 100 ml of water daily. He prepared four set-ups for his experiment. The table below shows the conditions in his experiment. Put a (✓) in the correct boxes below to indicate whether the conditions should be changed or kept the same in order for him to carry out a fair test. [2]

Conditions	To be changed	Keep the same
Type of soil used		
Amount of soil used		
Amount of water given		
Where the plants are placed		

Richard measured the height of the plants for a period of 2 weeks. Study the data shown below carefully.

	Height of plants given 50 ml of water (cm)	Height of plants given 100 ml of water (cm)
Day 0	5	8
Day 5	6	9
Day 9	7	10
Day 14	7	15

(e) Based on the data shown above, why was Richard's experiment not a fair one? [1]

---



---

**END OF BOOKLET B**  
Please check all your answers carefully.

Score	
	6

YEAR : 2016  
 LEVEL : PRIMARY 3  
 SCHOOL : ANGLO-CHINESE  
 SUBJECT : SCIENCE  
 TERM : CA1

Booklet A & B

Q1	Q2	Q3	Q4	Q5	Q6	Q7	Q8
1	4	1	3	4	4	3	1
Q9	Q10	Q11	Q12	Q13	Q14	Q15	
1	2	3	2	4	4	2	

- Q16
- (a) Caterpillars like the dark better than the light.
  - (b) Living thing respond to changes around them.
  - (c) Because the amount of items in Box A did not change but the amount of items in Box B increased.

- Q17
- (a) Stem
  - (b) Leaves
  - (c) Roots

Q18

	Statements	True	False
(a)	Mushrooms grow well in dry places only.		✓
(b)	The spores of mushrooms can be found on the underside of their caps.	✓	
(c)	Mushrooms are able to make their own food.		✓
(d)	Some mushrooms can be eaten.	✓	

Q19

(a)

Animals	Letters
Butterfly	C
Ostrich	A
Tiger	B
Millipede	D

(b) Give birth to its young.

(c) Frogs

Q20

(a) Material S.

(b) Material Q is flexible but material P is not flexible.

Q21

(a) May classification the buttons by colour.

(b) Lily classification the buttons by number of holes.

(c) Susan classification the buttons by shape.

(d) By number of sides of the shape.

Q22

	Conditions	To be changed	Keep the same
(a)	Type of soil used		✓
(b)	Amount of soil used		✓
(c)	Amount of water given	✓	
(d)	Where the plants are placed		✓

(e) The statistic for the number of days is not constant, hence it is unfair.

End