

Pei Chun Public School
Holistic Assessment 1 – Review Assessment 2017
Science
Primary 3

Name : _____ ()

Class : Pri. 3 ()

Date: 24 February 2017

Time: 30 min

Science Teacher : _____

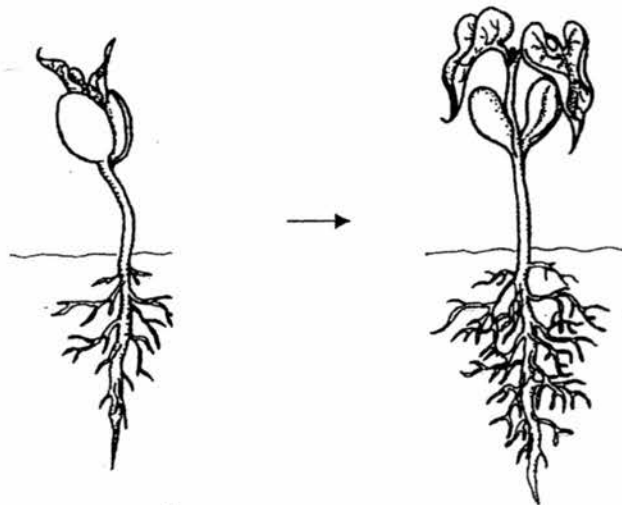
Parent's signature: _____

Section A	10
Section B	10
Total	20

Section A (5 × 2 marks)

For questions 1 to 5, choose the most suitable answer and write its number (1, 2, 3 or 4) in the brackets provided.

1. The diagram below shows what happened to a plant after a few days.

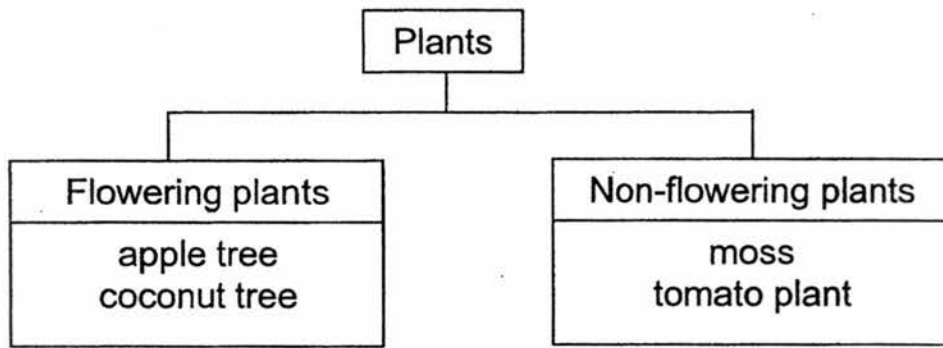


From the diagram, we can tell that a plant is a living thing because it _____.

- (1) can grow
- (2) can reproduce
- (3) can respond to changes
- (4) needs air, food and water to survive

()

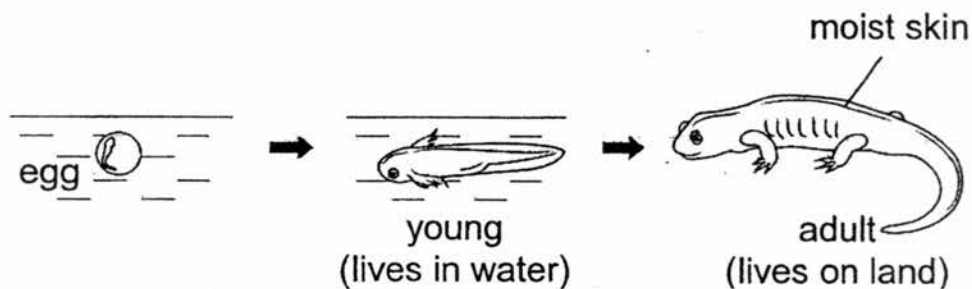
2. Study the classification diagram below.



Which of the following plants has been classified wrongly?

- (1) moss
- (2) apple tree
- (3) coconut tree
- (4) tomato plant ()



3. The diagram below shows the development of an animal from egg to adult.



Based on the diagram, which of the following groups does this animal most likely belong to?

- (1) fish
- (2) reptile
- (3) mammal
- (4) amphibian ()

4. The table below shows the shapes and edges of different types of leaves.

Leaf	Shape	Edge
	oval	toothed
	heart	entire

Which of the following matches the characteristics of the leaf shown below?



	Shape	Edge	
(1)	heart	entire	
(2)	heart	toothed	
(3)	oval	entire	
(4)	oval	toothed	()

5. What is generally common among insects and birds?

- (1) They can fly.
- (2) They have three body parts.
- (3) They reproduce by laying eggs.
- (4) They have the same type of body covering. ()

End of Section A

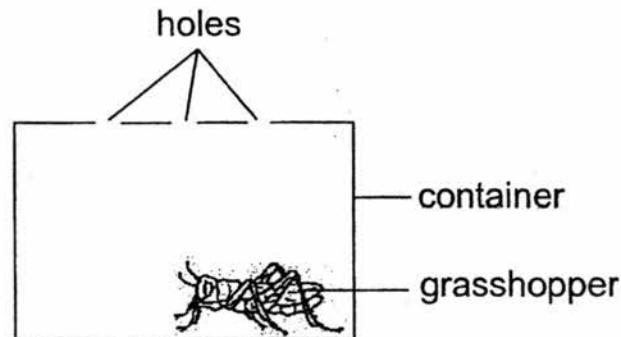
Section B (10 marks)

For questions 6 to 9, write your answers in the spaces provided.

6. Gopi saw a grasshopper in the field and tried to catch it with his bare hands. The grasshopper hopped away when he went near it.

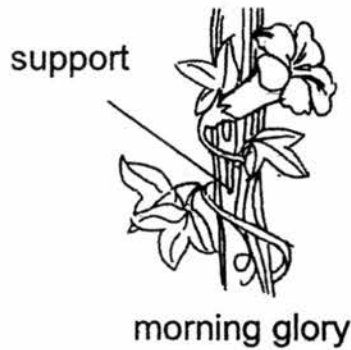
a) What characteristic of living things did the grasshopper show? [1]

After some time, Gopi caught the grasshopper and placed it in a container as shown below. He showed it to Tom.



b) Tom told him that the grasshopper cannot stay alive for long in the container. What other things does the grasshopper need to stay alive? [2]

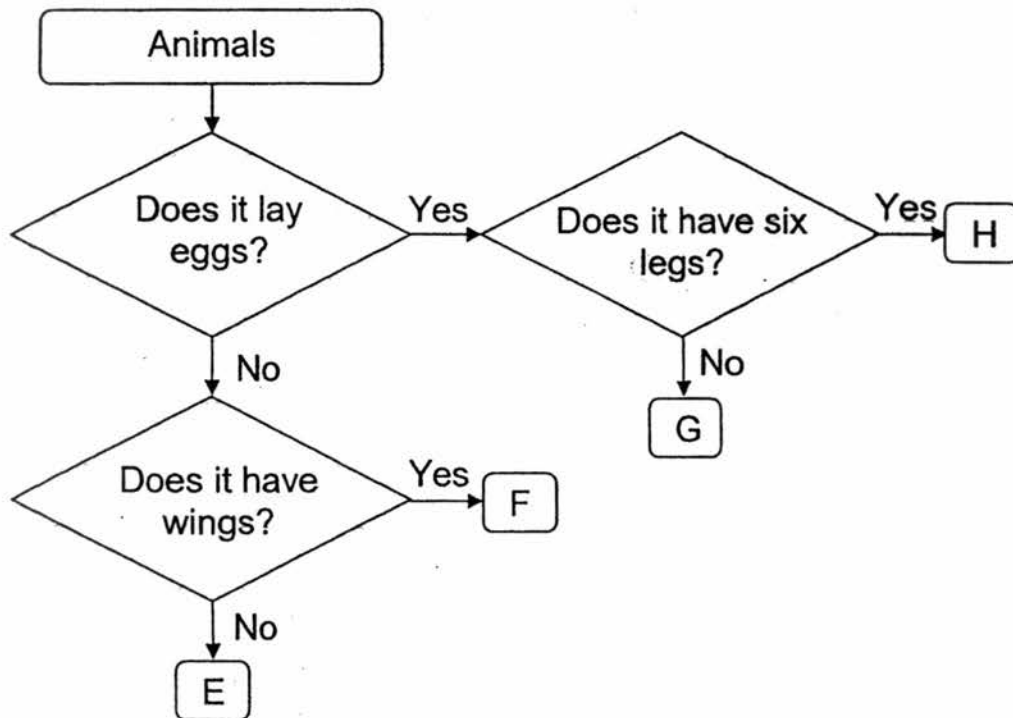
7. The diagram below shows a morning glory plant and a tree fern.



Put a tick (✓) in the correct boxes to show whether the following statements about the plants are 'True' or 'False'. [2]



Statement	True	False
The morning glory plant can make its own food but the tree fern cannot.		
Both plants have stems that enable them to stand upright on their own.		

8. The flowchart below shows the classification of four different animals, E, F, G and H.



a) Match the correct letters (E, F, G or H) to the animals given below.

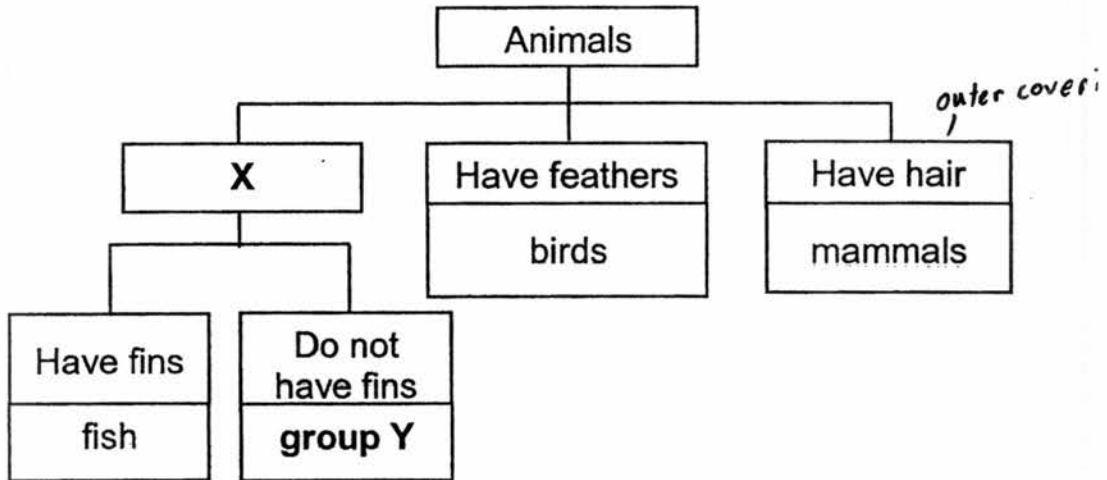
[1]

Animal	Letter
 bee	
 bat	

b) Based on the flowchart, state a difference between animals E and G.

[1]

9. Study the classification diagram below.



a) Fill in the correct heading for X and the correct animal group for Y. [2]

X	
Y	

b) Rosnah found the following description of an animal.

- The animal gives birth. - *mammals*
- The animal lives in the water.
- The animal feeds its young with its milk.

In which group (fish, Y, birds or mammals) does this animal belong to? [1]

End of Section B

Setter: Mdm Ong Bok Hoon
 Vetter: P3 ScienceTeachers

EXAM PAPER 2017

LEVEL : PRIMARY 3
SCHOOL : PEI CHUN PUBLIC SCHOOL
SUBJECT : SCIENCE
TERM : HOLISTIC ASSESSMENT 1

SECTION A

Q1	Q2	Q3	Q4	Q5
1	4	(4)	2	3

SECTION B

- Q6 (a) ~~The grasshopper can respond to changes.~~
(b) ~~It needs food and water.~~
- Q7 (a) ~~False~~
~~False~~
- Q8 (a) ~~H~~
~~F~~
(b) ~~Animal G lays eggs but animal E does not lay eggs~~
- Q9 (a) ~~X: Have scales~~
~~Y: Reptiles~~
(b) ~~Mammals~~

1
END.

Handwritten text, possibly bleed-through from the reverse side of the page. The text is mostly illegible due to fading and blurring.