

# Anglo-Chinese School (Junior)



## BITE-SIZED ASSESSMENT 2 (2017) CA2

PRIMARY 3

SCIENCE

Tuesday

7 March 2017

30 minutes

Name: \_\_\_\_\_ ( ) Class: 3.( ) Parent's Signature: \_\_\_\_\_

### INSTRUCTIONS TO PUPILS

- 1 Do not turn over the pages until you are told to do so.
- 2 Follow all instructions carefully.
- 3 There are 10 questions in this booklet.
- 4 Answer ALL questions.
- 5 The marks are given in the brackets [ ] at the end of each question or part question.

Question Paper	Possible Marks	Marks Obtained
<b>Total</b>	<b>10</b>	

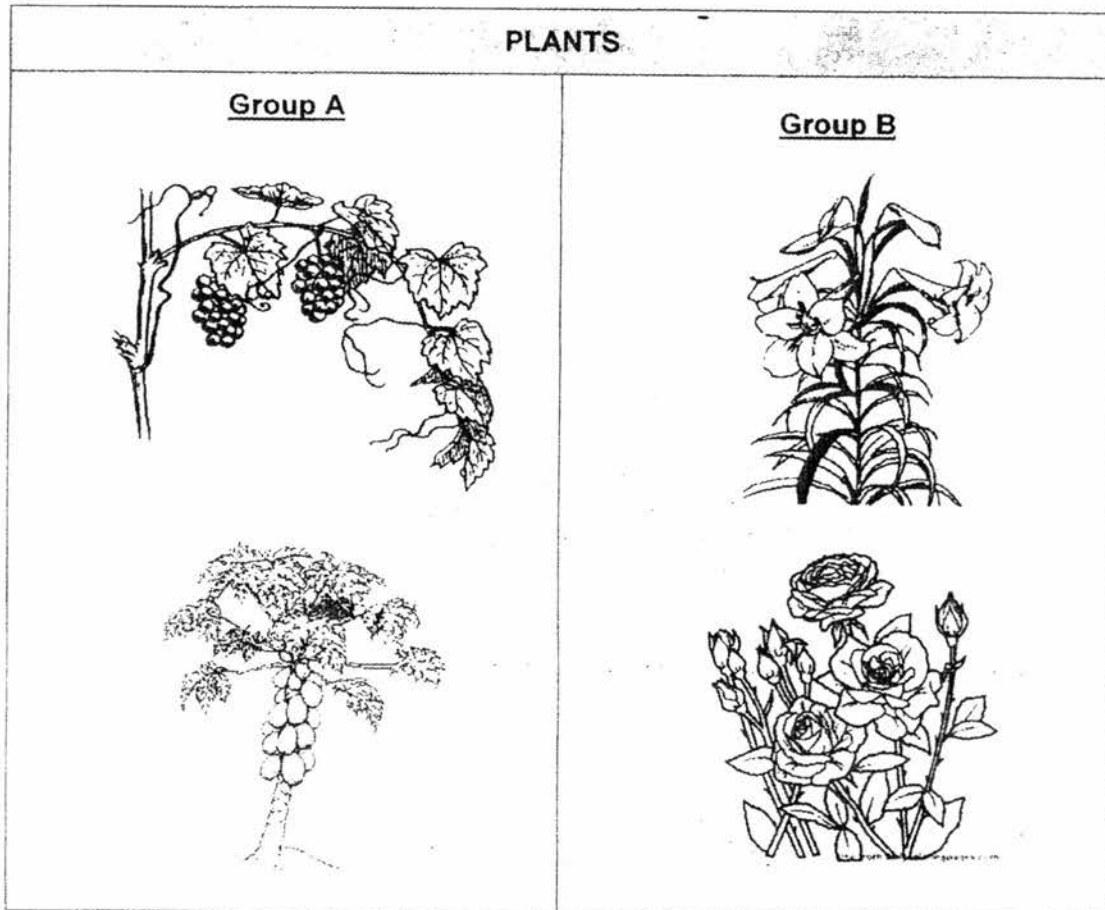
---

This question paper consists of 12 printed pages (inclusive of cover page).

**Section A: Multiple-Choice Questions (5 marks)**

For each question from 1 to 5, four options are given. One of them is the correct answer. Make your choice and write your answer, 1, 2, 3 or 4, in the brackets provided. (5 x 1 mark)

- 1 The following plants are classified into two groups, A and B.



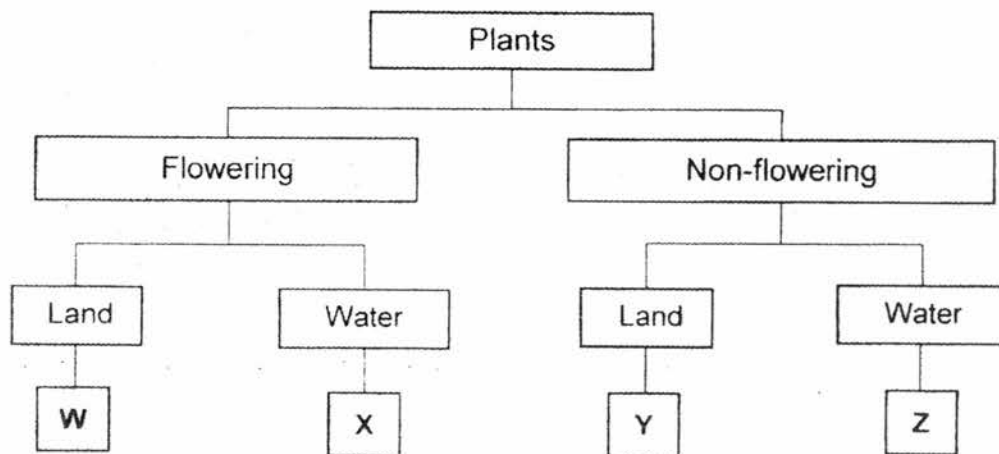
Which one of the following best represents groups A and B based only on your observation?

	<b>A</b>	<b>B</b>
(1)	Has flowers	Does not have flowers
(2)	Has fruits	Does not have fruits
(3)	Reproduce by seeds	Reproduce by spores
(4)	Can make its own food	Cannot make its own food

- 2 Ali observed a plant and recorded his observations in the table below.

Observations
It is a land plant.
It does not have flowers.
It has spore bags on the underside of the leaves.

From the information above, Ali classified the plant in the classification diagram below.

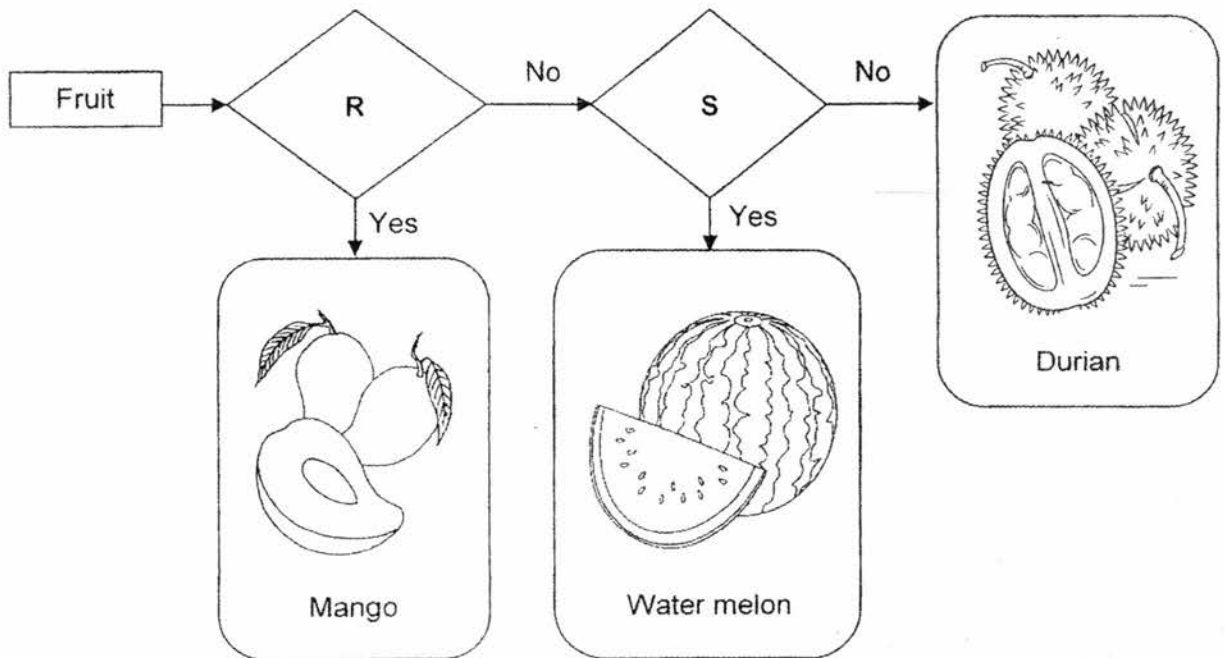


Which one of the following, **W**, **X**, **Y** or **Z**, is the plant he observed?

- (1) Plant W
- (2) Plant X
- (3) Plant Y
- (4) Plant Z

( )

3 Study the flowchart below.



Which one of the following best represents 'R' and 'S'?

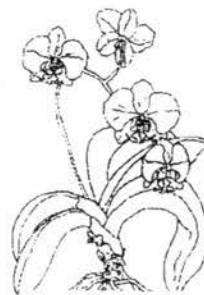
	R	S
(1)	Does it have rough skin?	Does it have one seed?
(2)	Does it have many seeds?	Does it have rough skin?
(3)	Does it have one seed?	Does it have smooth skin?
(4)	Does it have smooth skin?	Does it have many seeds?

4 Study the table shown below.

Plant Part	Group A	Group B
Roots	Have roots	
Stems	Have stems	
Leaves	Have leaves	
Flowers	Have flowers	Do not have flowers
Fruits	Have fruits	Do not have fruits



Plant P



Plant Q



Plant R

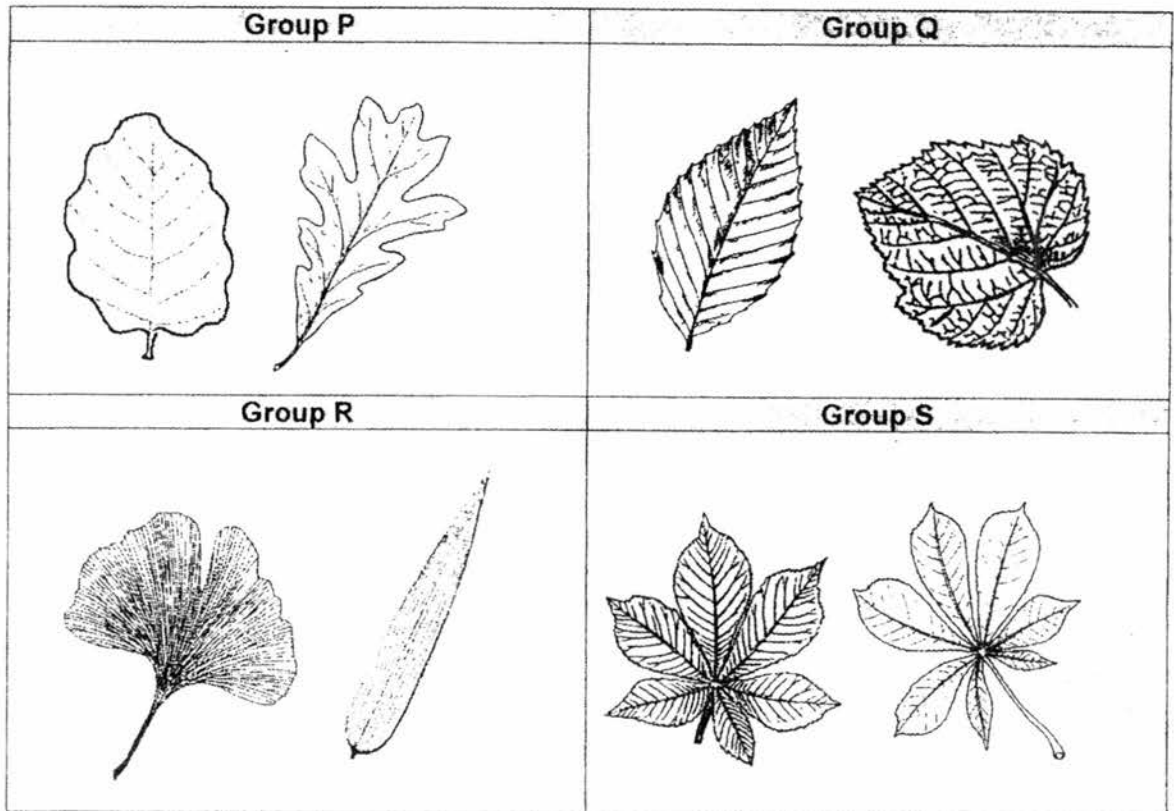


Plant S

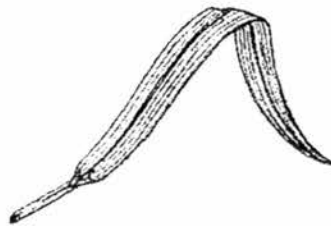
Which of the following shows the correct classification of Plants P, Q, R and S above?

	Group A	Group B
(1)	Plants Q, R and S	Plant P
(2)	Plants Q and R	Plants P and S
(3)	Plant Q and S	Plants P and R
(4)	Plant Q	Plants P, R and S

5 The diagram below shows four different groups of leaves.



In which group will you classify the following leaf?



- (1) Group P
- (2) Group Q
- (3) Group R
- (4) Group S

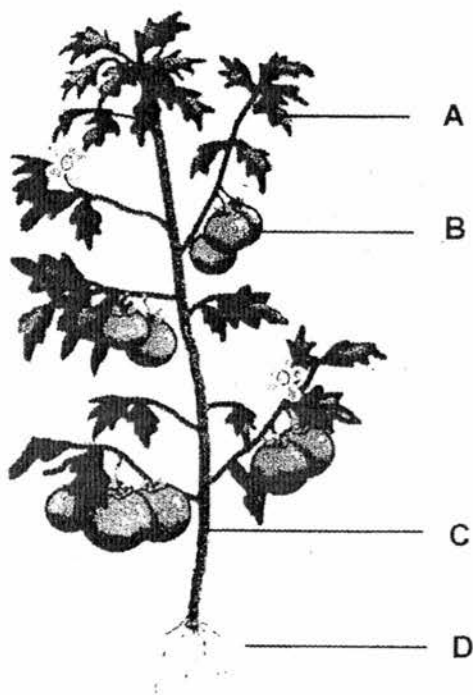
### Section B: Structured and Open-Ended Questions (5 marks)

For questions 6 to 10, write your answers in this booklet.

The number of marks available is shown in brackets [ ] at the end of each question or part question.

- 6 Study the plant below. Use the words given in the table below to identify the parts of the plant labelled A, B, C and D. [1]

fruit	leaf	stem
flower	root	shoot



Write your answers in the blanks below.

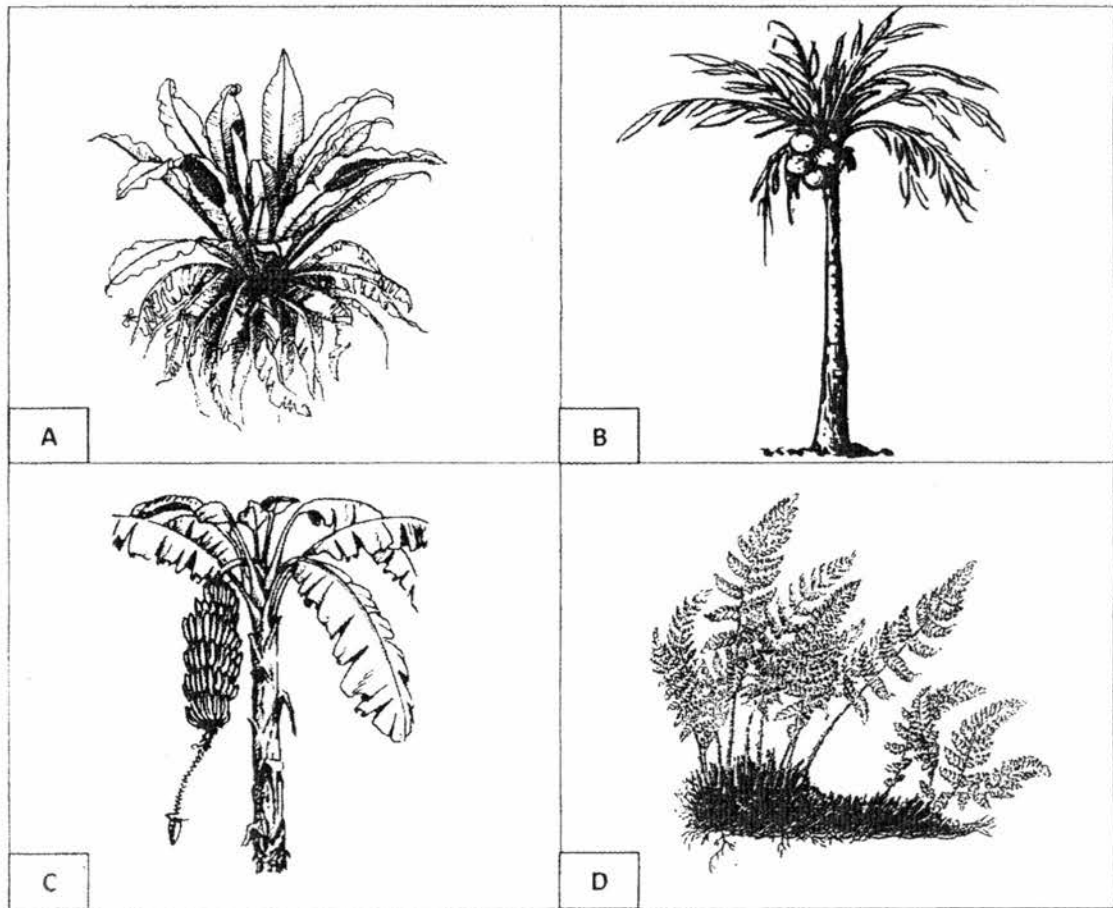
A: \_\_\_\_\_

B: \_\_\_\_\_

C: \_\_\_\_\_

D: \_\_\_\_\_

7 Study the pictures of four plants, A, B, C and D, as shown in the diagram below.



What is **one** way you can group these plants? Write the letters, **A, B, C** and **D**, in the square boxes below and give suitable headings for your classification. **Do not** compare the shape and size.

PLANTS	
<div style="display: flex; justify-content: space-around; align-items: center;"> <div style="border: 1px solid black; width: 60px; height: 60px; margin-right: 20px;"></div> <div style="border: 1px solid black; width: 60px; height: 60px;"></div> </div>	<div style="display: flex; justify-content: space-around; align-items: center;"> <div style="border: 1px solid black; width: 60px; height: 60px; margin-right: 20px;"></div> <div style="border: 1px solid black; width: 60px; height: 60px;"></div> </div>

[½]

[½]



8 Diagram 1 below shows different types of plants, A, B, C, D and E.

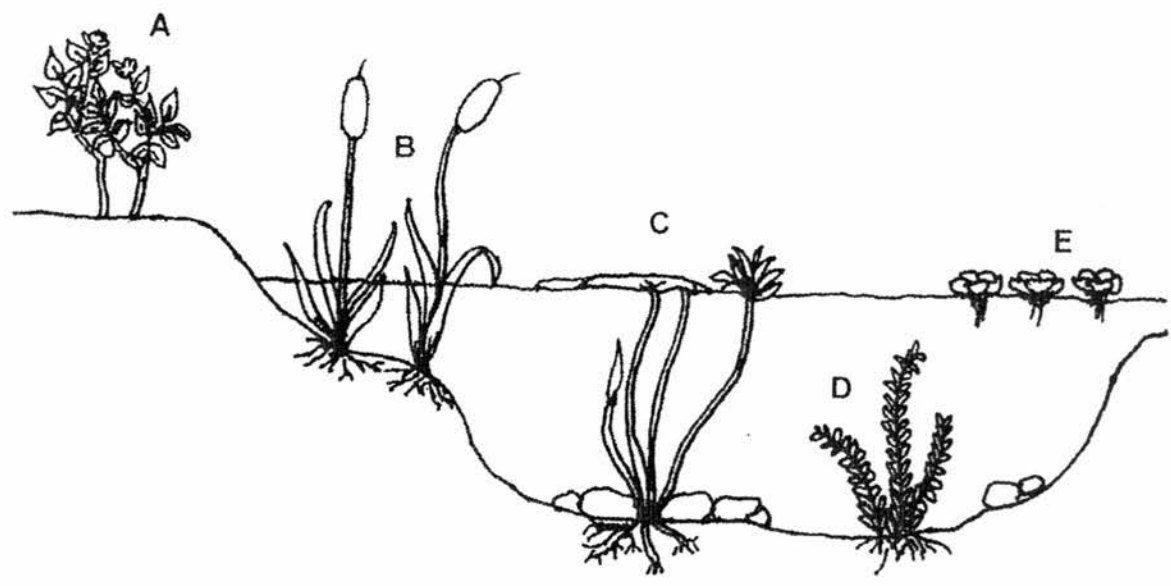
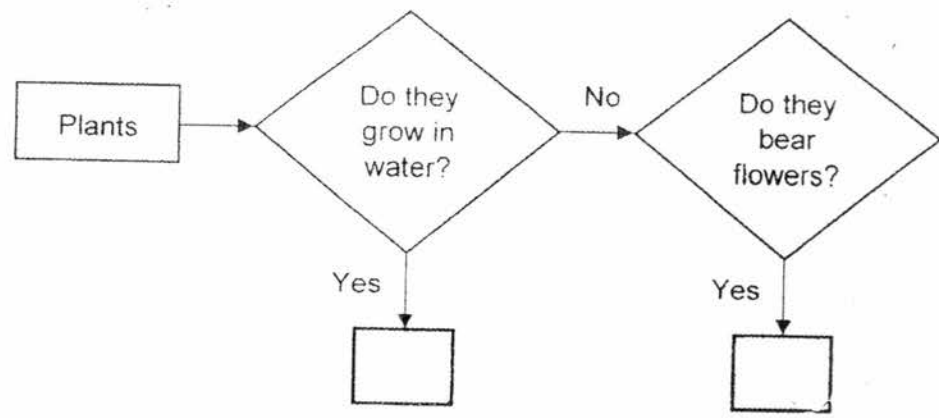
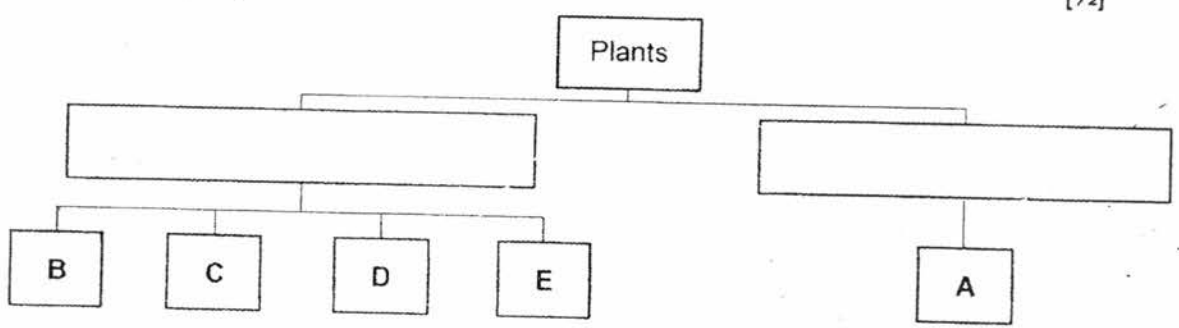


Diagram 1

(a) Study the flow chart below. Based on Diagram 1, write the letters, A, B, C, D or E, in the correct boxes in the flow chart below. [½]



(b) The plants are classified into two groups as shown below. Give suitable headings for each group. [½]



- 9 Tim observed Plant A below and recorded his observations in the table below.



Plant A

Observations	Has leaves	Has flowers	Has fruits	Has stem	Has roots
A	✓	✓			✓
B	✓		✓	✓	✓
C	✓	✓	✓		✓
D	✓	✓	✓	✓	✓

- (a) Which of the above observations, A, B, C or D, made by Tim is correct? [½]

---

- (b) Look at Plant B below. State one difference between **Plant A** and **Plant B**. Do not compare shape and size. [½]



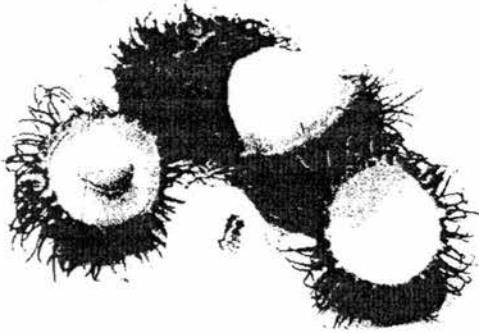
Plant B

Difference:

---

---

10. Study the rambutan and the longan below. Based on your observation, state one similarity and one difference between the two fruits. Do not compare shape and size.



rambutan



longan

- (a) Similarity: [½]

---

---

- (b) Difference: [½]

---

---

~ END OF PAPER ~

**EXAM PAPER 2017**

**LEVEL** : PRIMARY 3  
**SCHOOL** : ACS (Junior)  
**SUBJECT** : SCIENCE  
**TERM** : Bite-sized Assessment 2

Q1	Q2	Q3	Q4	Q5
2	3	3	1	3

- Q6 (a) A: Leaf  
B: Fruit  
C: Stem  
D: Root
- Q7 (a) Produces fruit: B, C  
Does not produce fruits: D, A
- Q8 (a) B, A  
(b) Grow in water, Grow on land
- Q9 (a) Observation D is correct.  
(b) Plant A has roots underground but Plant B has roots above the ground.
- Q10 (a) Both have seeds.  
(b) The rambutan has a hairy skin but the longan has a smooth skin

xcc