

Name : _____ ()

Class : Primary 3 _____

CHIJ ST NICHOLAS GIRLS' SCHOOL



Primary 3

Semestral Assessment 1- 2009

SCIENCE

14th May 2009

Booklet A





Total time for Booklets A and B: 1 hour ³⁰ minutes
This booklet consists of 16 printed pages.

Do not open this booklet until you are told to do so.
Follow all instructions carefully.

Section A : (30 x 2 marks)

For each question from 1 to 30, four options are given. One of them is the correct answer. Mark your choice (1, 2, 3 or 4). Shade the correct oval (1, 2, 3 or 4) on the Optical Answer Sheet.

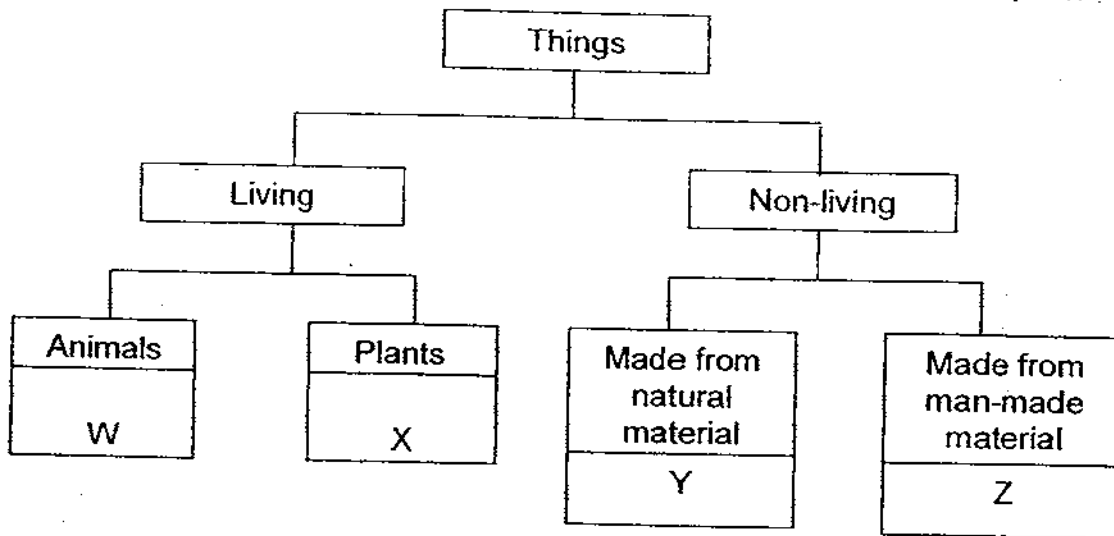
1. Which one of the following things can move by itself?

<p>(1)</p>  <p>Ice cube</p>	<p>(2)</p>  <p>Telephone</p>
<p>(3)</p>  <p>Plant</p>	<p>(4)</p>  <p>Stationary car</p>

2. Which one of the following statements about plants is true?

- (1) All non-flowering plants are not green.
- (2) All flowering plants produce their flowers singly.
- (3) Flowering plants produce flowers when they are adult plants.
- (4) Flowering plants have more leaves than non-flowering plants.

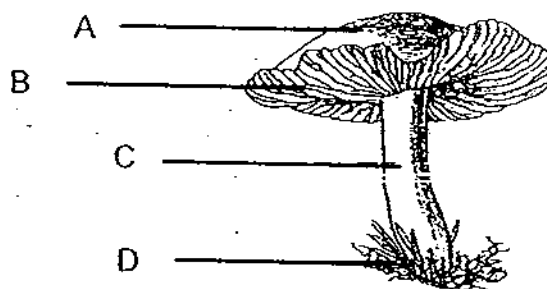
3. Study the classification chart below carefully.



Which one of the following has been classified ~~as living~~?

	W	X	Y	Z
(1)	Fly	Moss	Eraser	Porcelain bowl
(2)	Penguin	Rose	Nylon string	Plastic cup
(3)	Squirrel	Fern	Wooden ruler	Cotton coat
(4)	Butterfly	Mushroom	Feather duster	Metal spoon

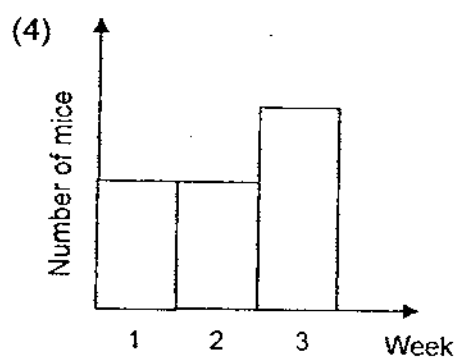
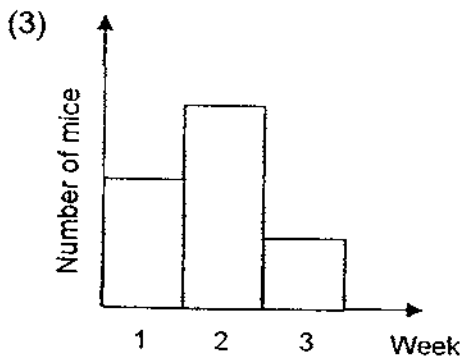
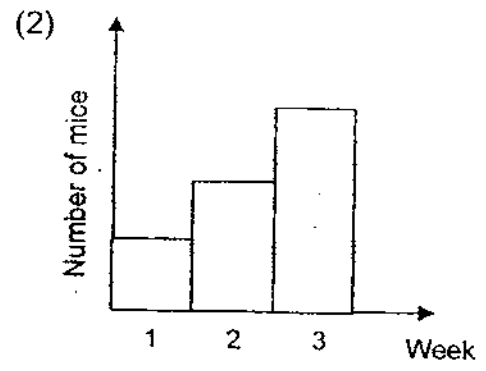
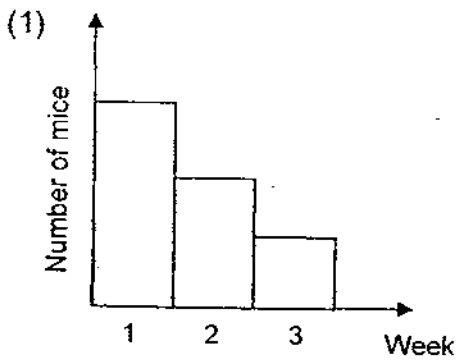
4. The diagram below shows the structure of a mushroom.



Where are the spores found?

- (1) A
- (2) B
- (3) C
- (4) D

5. Melissa put 6 mice in a box and gave them water. She did not feed them at all. Which one of the following graphs shows the correct number of mice that would be alive by the end of three weeks?



6. The table below shows the characteristics of A, B, C and D. A tick (✓) indicates that it has the characteristics.

	Ability to move from place to place	Needs water	Reproduces	Has legs
(A)	✓			
(B)	✓	✓	✓	✓
(C)	✓	✓	✓	
(D)		✓	✓	

Which one of the above is most likely to be a non-living thing?

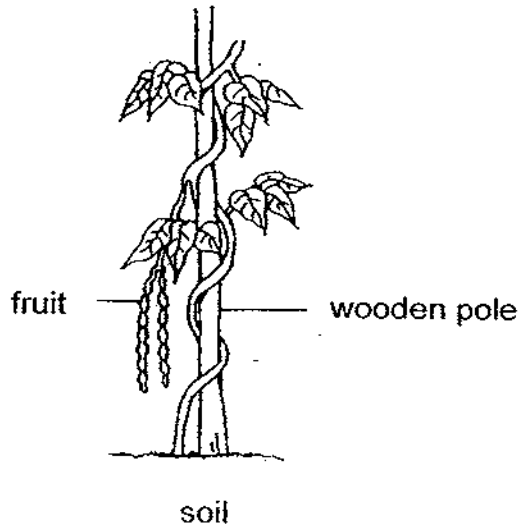
- (1) A
- (2) B
- (3) C
- (4) D

7. Which of the following statements about birds are **true**?

- A All birds can fly.
- B All birds lay eggs.
- C All birds have beaks.
- D All birds cannot swim.

- (1) A and B only
- (2) A and D only
- (3) B and C only
- (4) C and D only

8. The diagram below shows a plant growing in the garden.

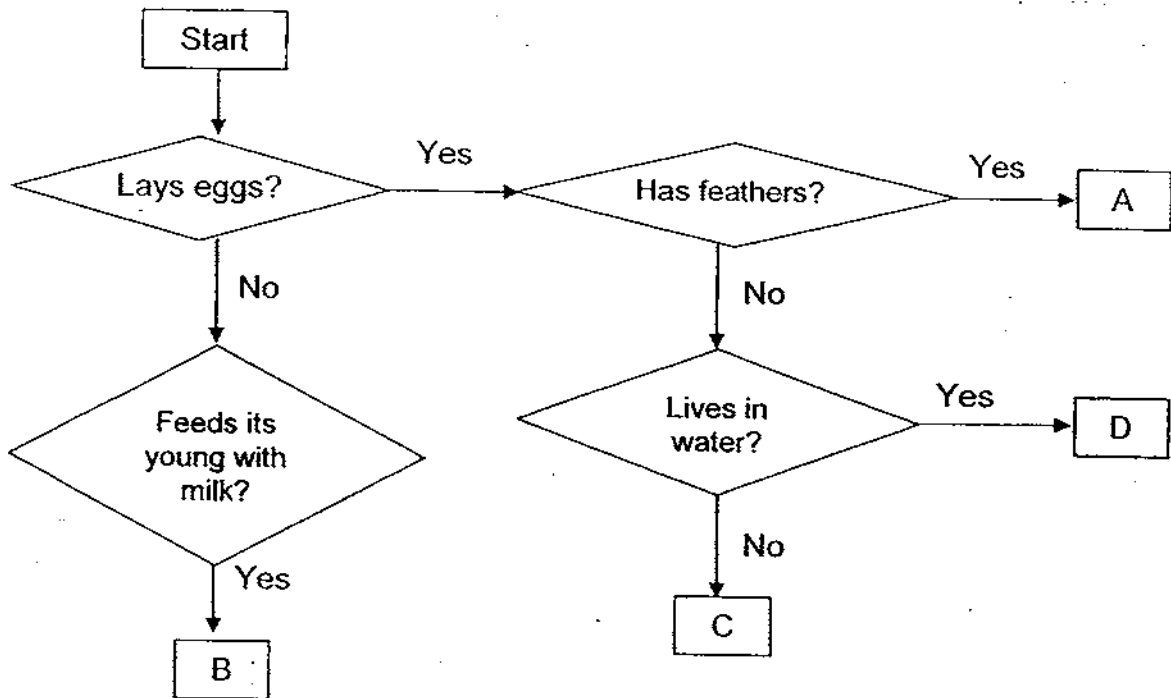


Which of the following statements is/are **correct**?

- A This plant has roots.
- B This plant has a weak stem.
- C This plant is a flowering plant.

- (1) B only
- (2) A and B only
- (3) A and C only
- (4) A, B and C

9. Study the flow chart below. A, B C and D are animals.



In which group, A, B, C or D, would you place **penguin**?

- (1) A
- (2) B
- (3) C
- (4) D

10. What do green plants need to make food?

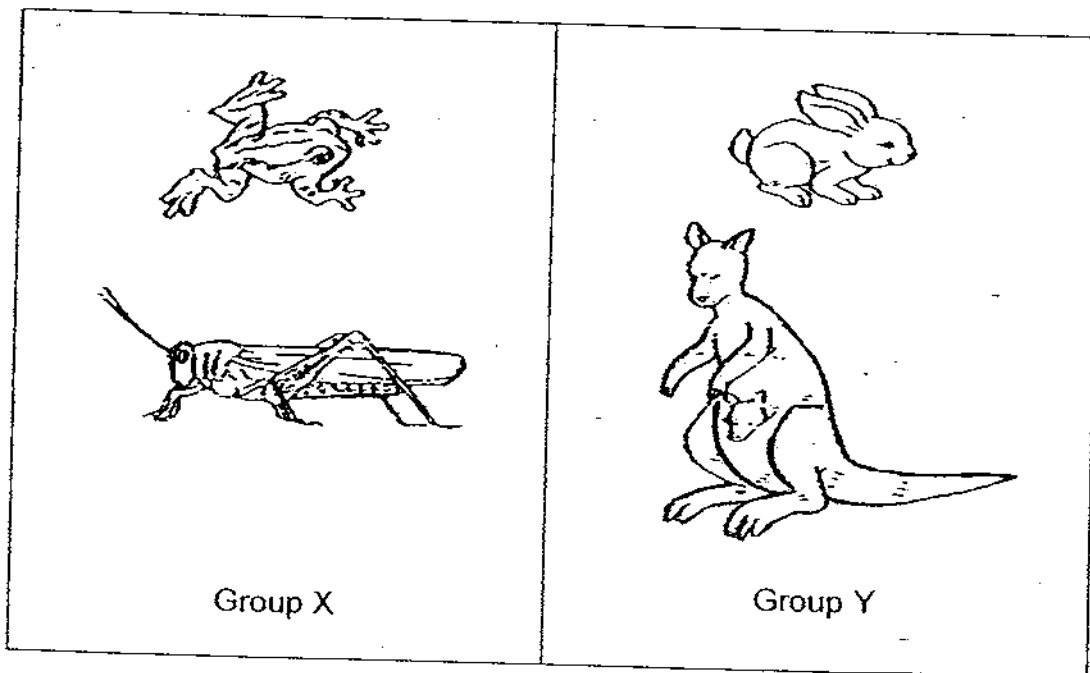
- A Sunlight
 - B Oxygen
 - C Carbon dioxide
 - D Sugar
-
- (1) A and B only
 - (2) A and C only
 - (3) B and C only
 - (4) C and D only

11. What are the similarities between fungi and bacteria?

- A They can grow.
- B They are harmful to man.
- C They cannot make their own food.
- D They come in different shapes and sizes.

- (1) A and B only
- (2) B and C only
- (3) A, B and C only
- (4) A, C and D only

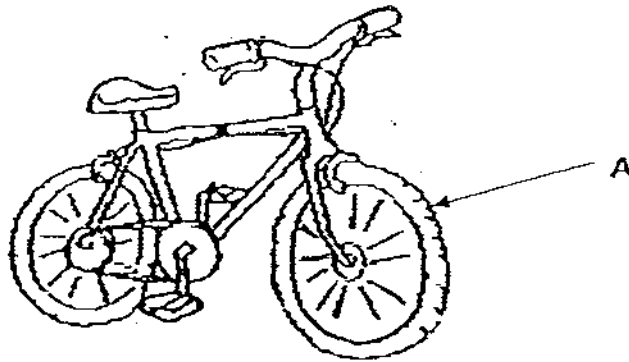
12. Observe the two groups of animals shown in the diagram below.



The animals are grouped according to the _____.

- (1) way the animals move around.
- (2) types of food the animals feed on.
- (3) number of limbs the animals have.
- (4) way the animals reproduce their young.

13. The diagram below shows a bicycle.



Which of the following are the properties of the material used to make part A of the bicycle?

- A: It is strong.
- B: It is flexible.
- C: It is breakable.
- D: It is transparent.

- (1) A and B only
- (2) B and C only
- (3) B, C and D only
- (4) A, C and D only

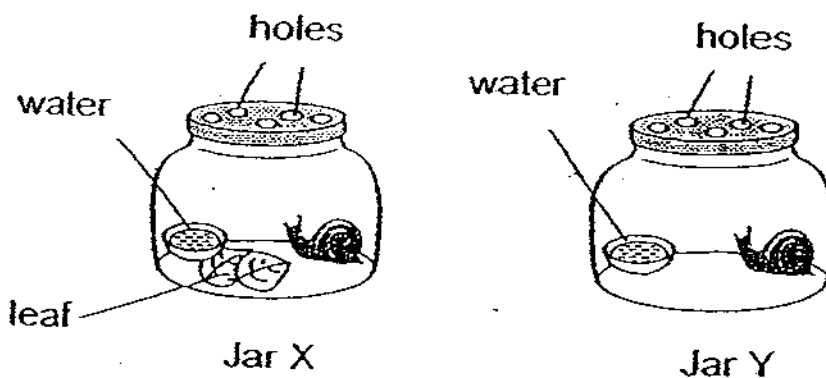
14. The table below shows properties of materials A, B, C and D.

Properties	Material A	Material B	Material C	Material D
Lightweight	√		√	√
Flexible	√	√	√	
Warm and comfortable to wear	√	√		√

Mrs Rajar is choosing a material to make a jacket for her son for his skiing trip up the snowy mountain. Which one of the following materials should she choose?

- (1) Material A
- (2) Material B
- (3) Material C
- (4) Material D

15. Peter set up 2 jars, X and Y, as shown in the diagram below.



He predicted that the snail in Jar Y would die faster than that in Jar X due to the lack of _____.

- (1) air
- (2) light
- (3) food
- (4) water

16. Some fruits are classified into two groups, A and B, as shown below.

Group A	Group B
Mango	Papaya
Plum	Watermelon
Longan	Pear
X	Y

What can X and Y be?

	X	Y
(1)	Apple	Orange
(2)	Lychee	Tomato
(3)	Honeydew	Banana
(4)	Durian	Kiwi

17. Four pupils observed an adult animal and recorded the following information.

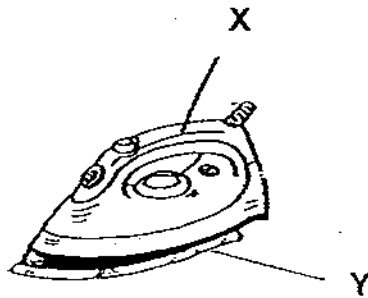
- It lays eggs.
 - It lives on land.
 - It has fewer than 6 legs.
 - It has no fins and no gills.
 - It takes care of its young.
- ~~It has feathers on its body.~~ ★

Each pupil then made the following conclusions.

Who made the correct conclusion?

- (1) Pupil A: The animal is a fish.
- (2) Pupil B: The animal is a bird.
- (3) Pupil C: The animal is an insect.
- (4) Pupil D: The animal is a mammal.

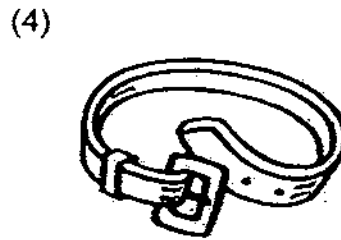
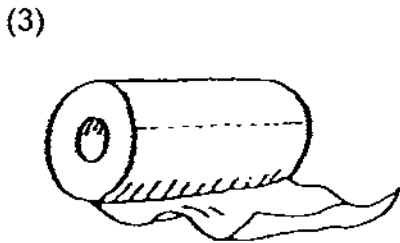
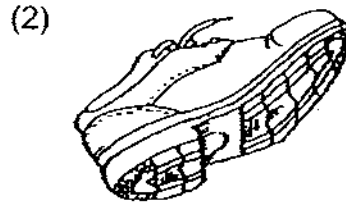
18. Look at the picture of an electric iron below.



What materials are most suitable for making part X and Y of the iron?

	X	Y
(1)	Plastic	Ceramics
(2)	Ceramics	Glass
(3)	Metal	Plastic
(4)	Plastic	Metal

19. Which one of the following objects is made up of one type of material only?



20. Most of the grocery bags in Singapore are made from plastic. Which one of the following is the reason for **not** using paper as the material to make grocery bags?

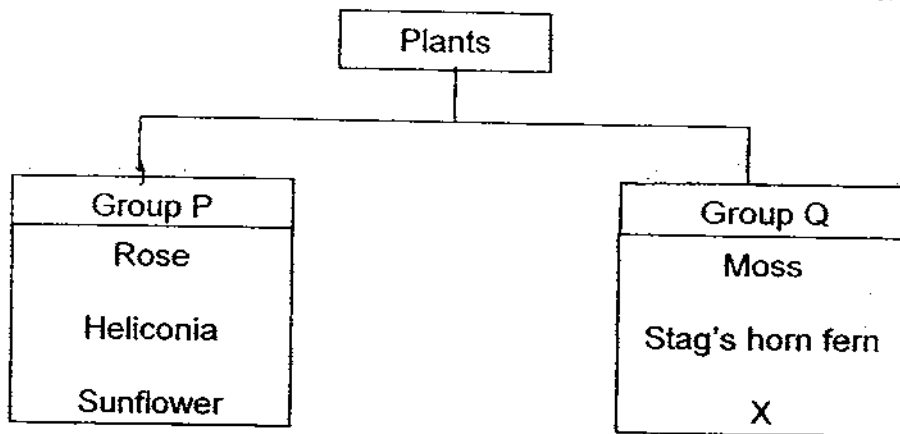
- (1) Paper is too hard.
- (2) Paper is too heavy.
- (3) Paper is ~~not~~ waterproof.
- (4) Paper does not allow light to pass through.

21. Which of the following properties are important when choosing a suitable material to make a raincoat?

- A Light
- B Flexible
- C Colourful
- D Waterproof

- (1) A and D only
- (2) B and C only
- (3) A, B and D only
- (4) B, C and D only

22. Study the classification chart below.



Which one of the following is most likely to be X?

- (1) Orchid
- (2) Rafflesia
- (3) Rain tree
- (4) Bird's nest fern

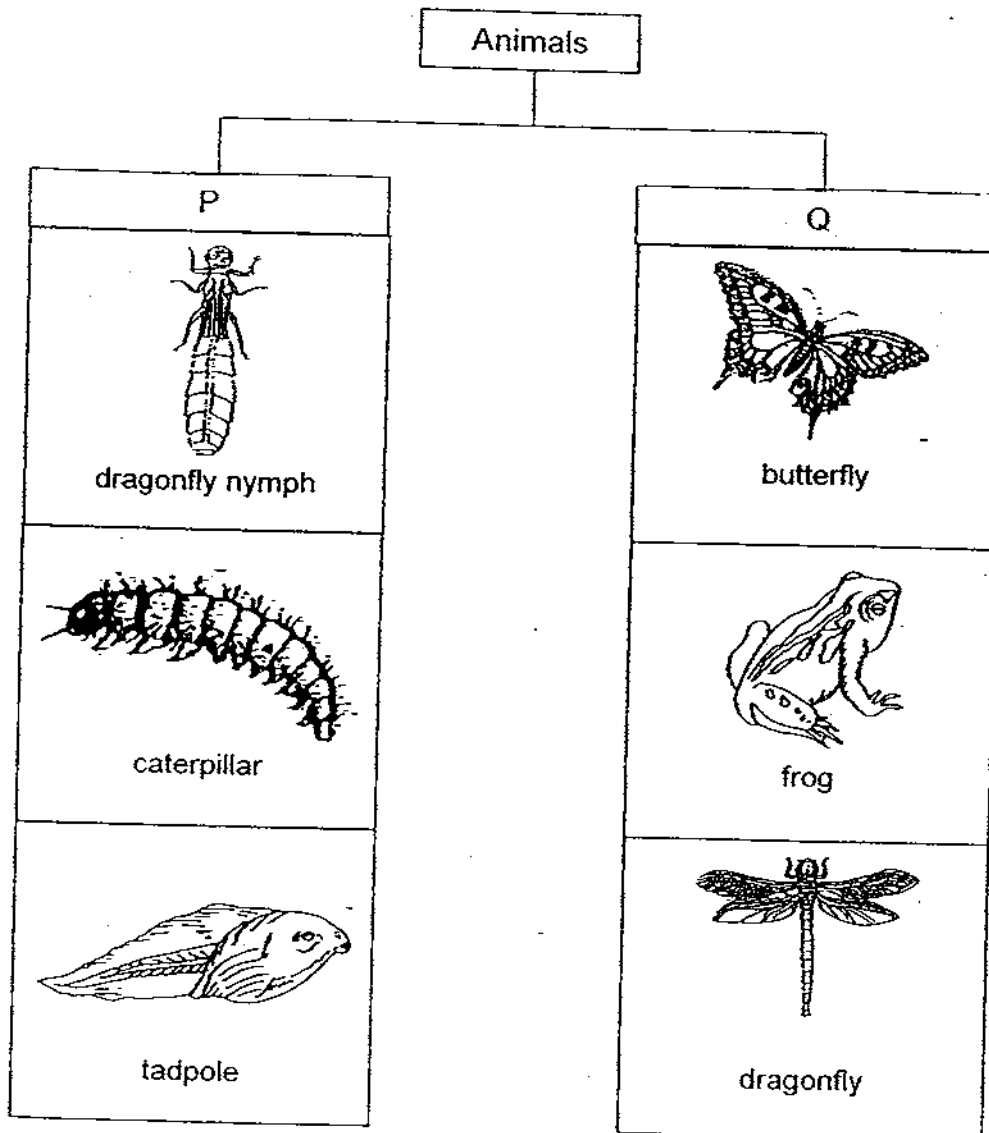
23. Jason used a pencil and eraser to scratch each other. He realized that he can use a pencil to scratch the eraser but not the other way round.



What conclusion can Jason make from his experiment?

- (1) The pencil is lighter than the eraser.
- (2) The pencil is harder than the eraser.
- (3) The pencil is heavier than the eraser.
- (4) The eraser is more flexible than the pencil.

24. Lucy prepared a classification diagram shown below.



Which of the following characteristics did Lucy use to group the animals?

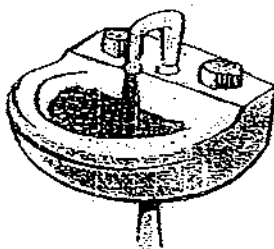
	P	Q
(1)	No body covering	Has body covering
(2)	Young	Adult
(3)	Useful	Harmful
(4)	Lives in water	Lives on land

25. Which of the following are micro-organisms?

- A Yeast
- B Bacteria
- C Mushrooms
- D Bracket Fungus

- (1) A and B only
- (2) A and C only
- (3) B and D only
- (4) C and D only

26. The diagram below shows a sink.



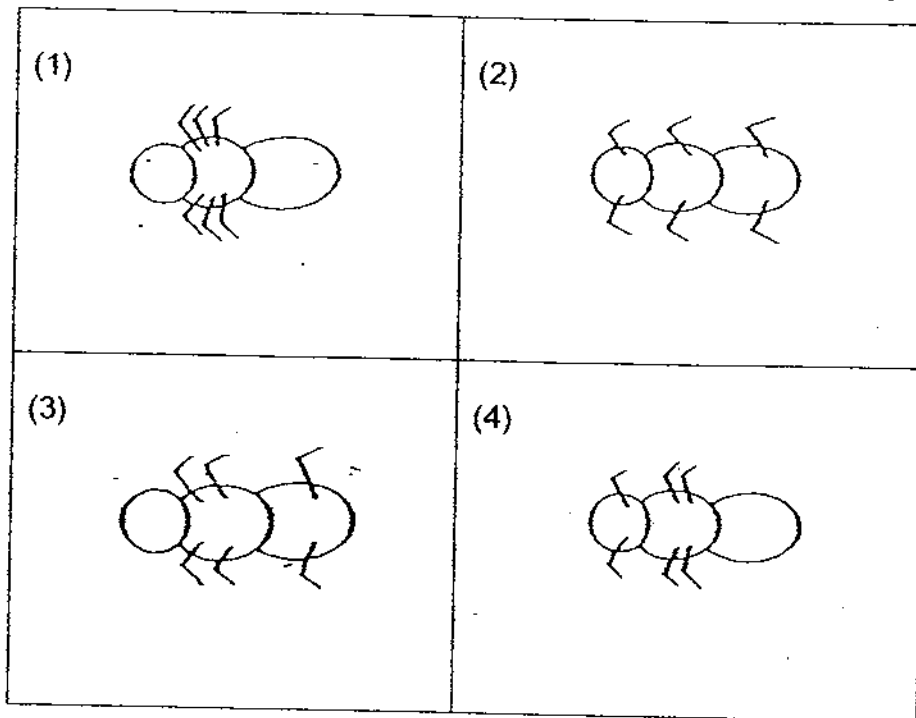
Sinks can be made of ceramic because it _____.

- (1) can float
- (2) is flexible
- (3) breaks easily
- (4) is hard and strong

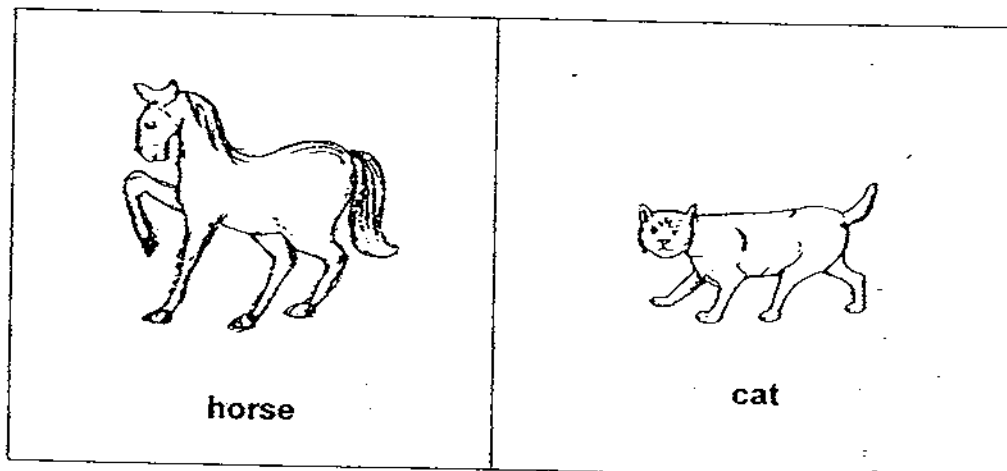
27. Lydia has a pot of live orchid plant and a pot of artificial orchid plant. Which one of the following is **not** the correct method to find out which is the real plant?

- (1) Leave them without watering for two days.
- (2) Check for wilting or dying leaves and flowers.
- (3) Place them near the window sill and observe for a month.
- (4) Observe and count the number of leaves both plants have for a month.

28. Which one of the following shows the correct position of an insect's legs?



29. The animals below have the same body covering.



Which one of the following animals can be placed in the same group as the animals above?

- (1) Bat
- (2) Prawn
- (3) Jellyfish
- (4) Crocodile

30. Which of the following statements are ~~true~~ of ~~living things~~?

- A They will eventually die.
- B They can move ~~from place to place~~.
- C They respond to changes around them.
- D They feed on other living things to survive.

- (1) A and C only
- (2) B and D only
- (3) B, C and D only
- (4) A, B, C and D

*******End of Paper*******

Name : _____ ()

Class : Primary 3 _____

CHIJ ST NICHOLAS GIRLS' SCHOOL



Primary 3

Semestral Assessment 1- 2009

SCIENCE

14th May 2009

Booklet B

Total time for Booklets A and B: 1 hour ³⁰ minutes
This booklet consists of 10 printed pages.

Booklet A	60
Booklet B	40
Total	100

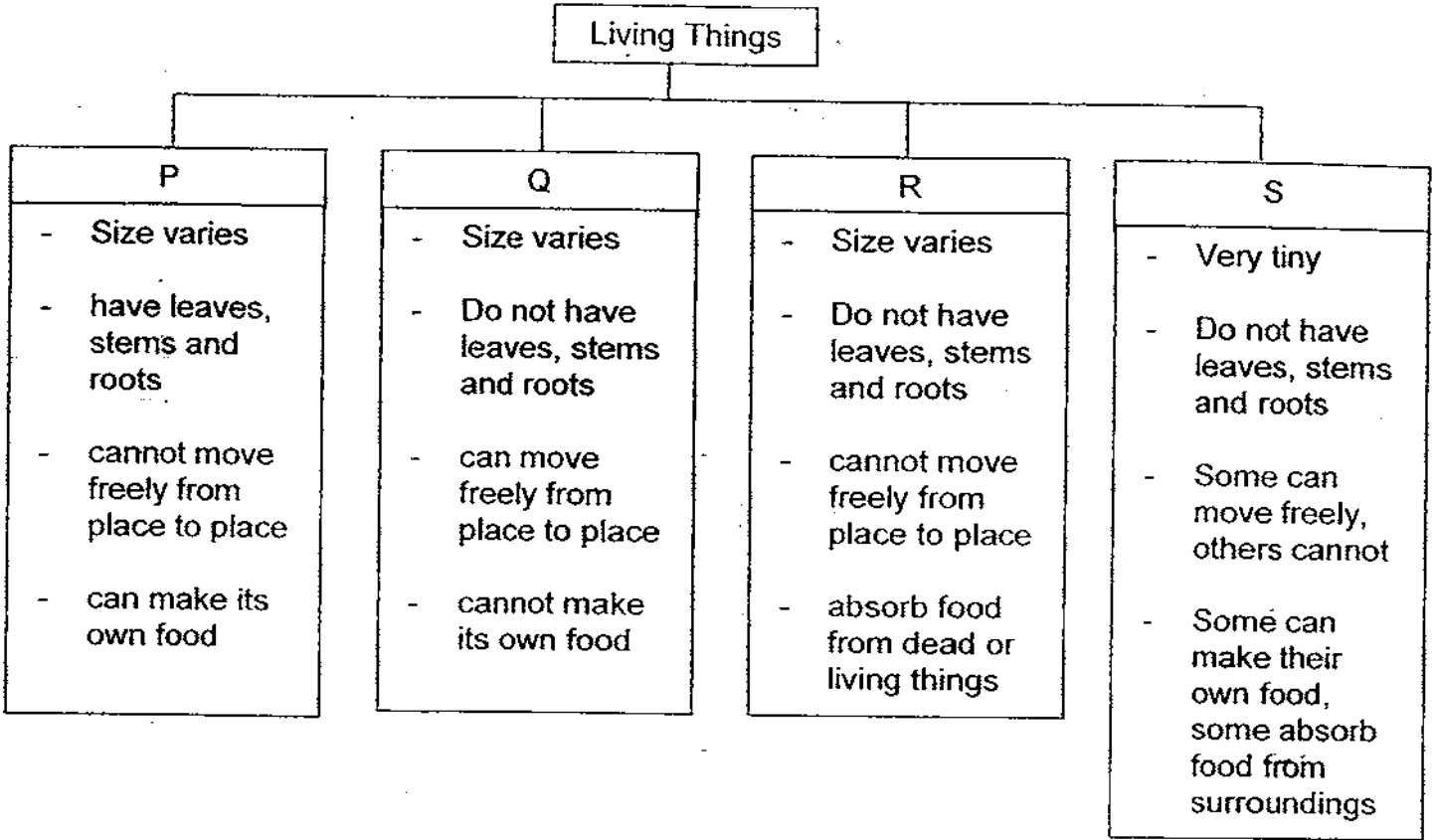
Do not open this booklet until you are told to do so.
Follow all instructions carefully.

Parent's Signature/Date

Section B : (40 marks)

Answer the following questions in the spaces provided.

31. Study the classification table below.



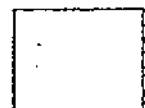
(a) Complete the table below by writing the letters P, Q, R and S in the correct boxes each group. [2]

Plants	
Bacteria	
Animal	
Fungi	

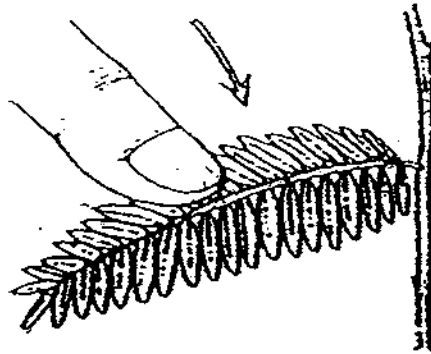
(b) State two differences between organisms in groups R and S. [2]

- (i) _____

- (ii) _____



32. Look at the diagram below.



(a) What will happen to the leaves of the mimosa plant when we touch them? [1]

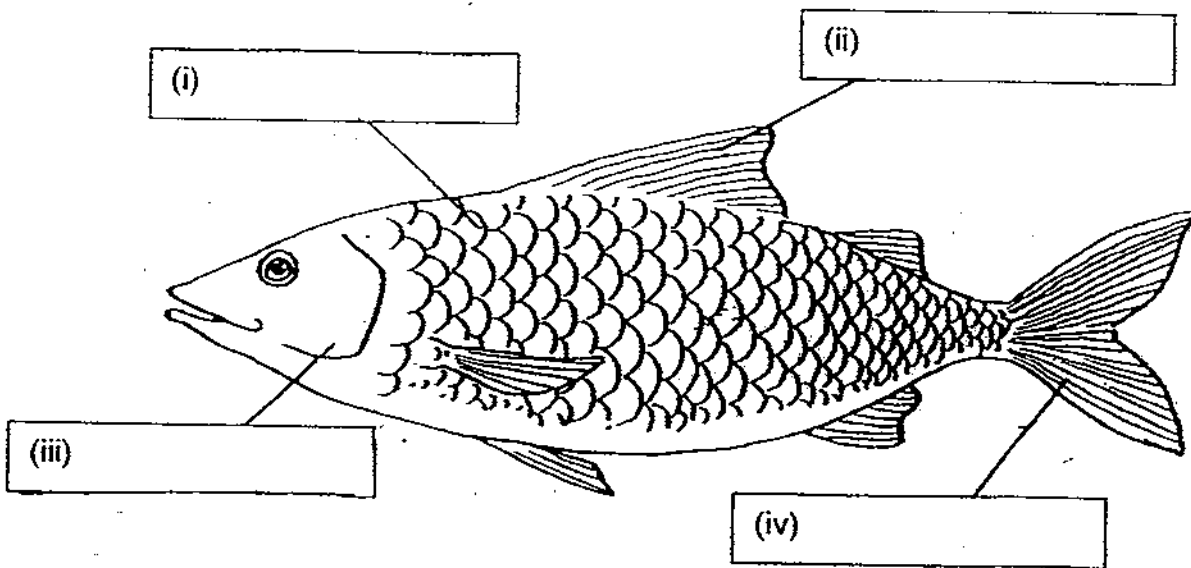
(b) What is the ~~characteristic~~ of living things that can be observed from your answer in (a)? [1]

33. Read the following sentences and put a tick (✓) in the correct true or false column. [3]

		True	False
(a)	Fungi reproduce from spores.		
(b)	Bacteria grow well in damp and dark places.		
(c)	Some fungi are edible.		
(d)	All bacteria are harmful.		
(e)	Plants moves slowly but fungi cannot move at all.		
(f)	All flowering plants produce flowers throughout the year.		



34. (a) Label the different parts of a fish in the diagram below. [2]



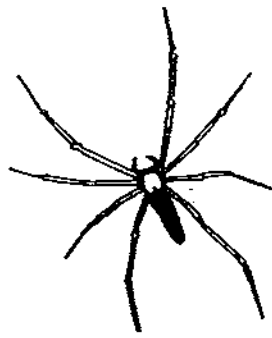
- (b) State one reason why part (i) is important to the fish. [1]

- (c) How will the fish be affected if the parts (ii) and (iv) are removed? [1]

35. Study the pictures shown below.



mosquito



spider

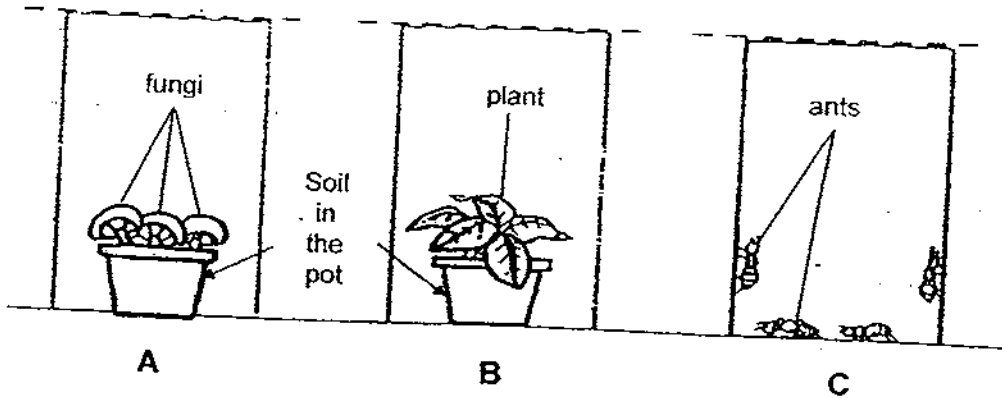
Based on what you can observe from the diagram, state two differences between the mosquito and the spider. ~~(State two differences in the colour, shape and size.)~~ [2]

(i) _____

(ii) _____



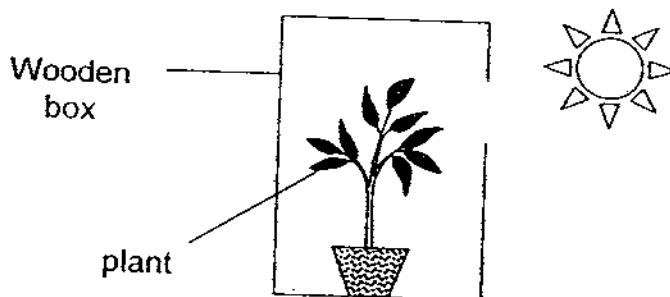
36. The diagram below shows three glass tanks (A, B and C) that are covered with wire gauze. They contain a different living thing and are placed in a sunny place and given water daily.



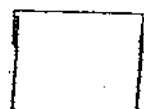
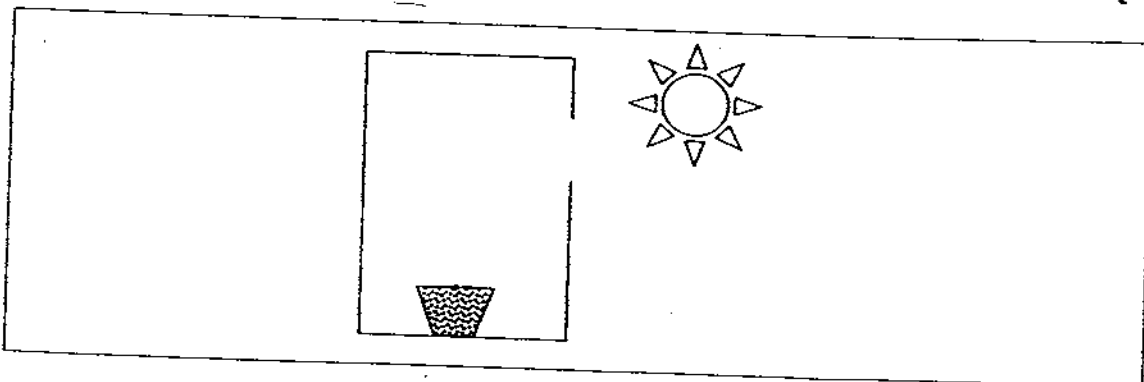
- (a) After 10 days, which living thing(s) will still be growing well? [1]

- (b) Explain your answer in (a). [2]

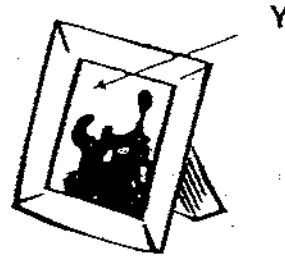
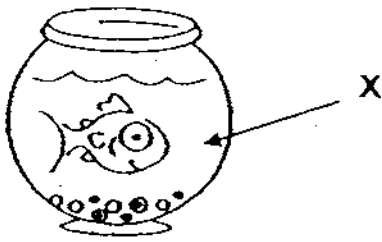
37. Jenny set up an experiment as shown below.



Draw in the box given below, what Jenny would observe in the set up above, after a few days. [1]



38. The diagrams below show a glass bowl and a photo frame.



(a) Suggest a suitable material that can be used to make part X and Y. [1]

(b) What physical property makes the material in (a) above suitable for use? [1]

39. The diagram below shows four different types of plants.



coconut tree



pine tree



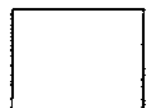
maize plant



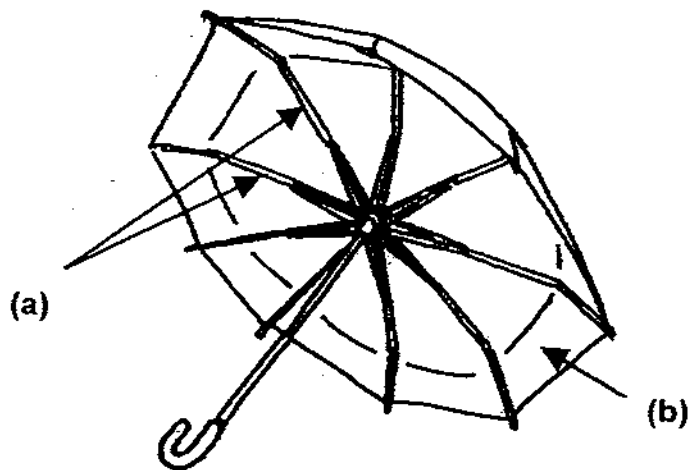
rambutan tree

(a) Which one of the above is a non-flowering plant? [1]

(b) Name one other non-flowering plant. [1]



40. The diagram below shows an umbrella.



Name the material that is used to make each part of the umbrella. State the property of the material that makes it suitable. [2]

	Material used	Physical Property
(a)		
(b)		



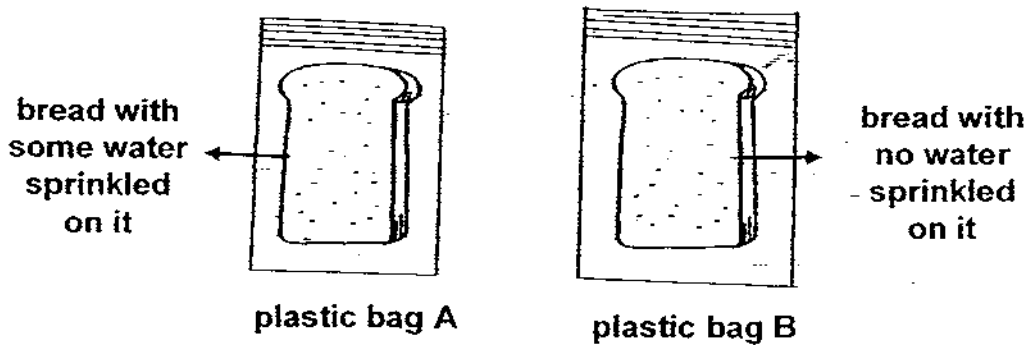
41. The table below shows some characteristics of four imaginary animals, P, Q, R and S. A tick (✓) shows the animal has that characteristic.

Animals	Number of legs		Plant eater	Has feathers	Give birth to young alive
	2	4			
P		✓			✓
Q	✓			✓	
R		✓	✓	✓	✓
S	✓			✓	✓

- (a) From the table above, state the characteristics of Animal P. [2]

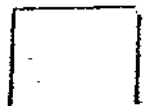
- (b) If some eggs were found near the four animals, whose eggs could they be? Give a reason for your answer. [2]

42. Larry sprinkled some water on a piece of fresh bread and placed it in a sealed plastic bag labelled A. He placed a piece of toasted bread in another sealed plastic bag and labelled it B.

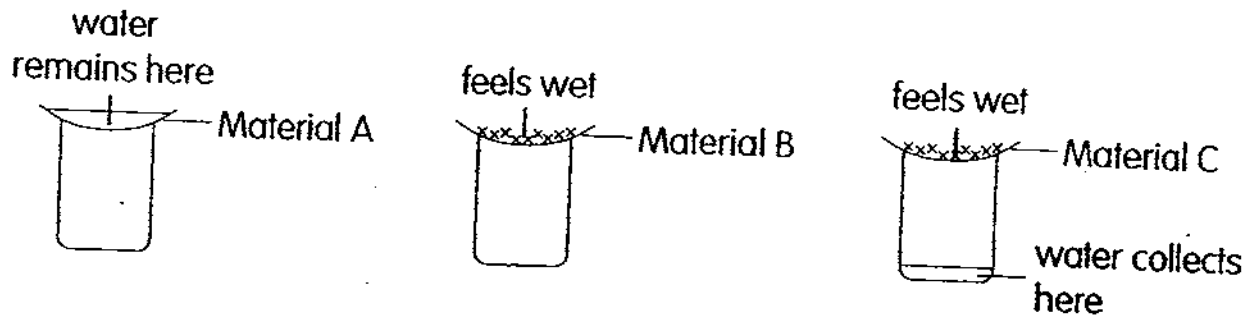


- (a) What would Larry observe in both plastic bags after a few days? [2]

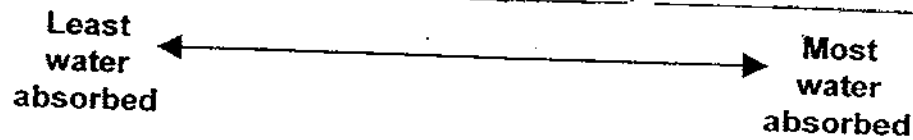
- (b) Explain Larry's observations made in (a). [2]



43. Jane placed three sheets made of different materials, A, B and C, over the mouth of three containers. She then poured a spoonful of water onto each material. The following diagram shows her observation.



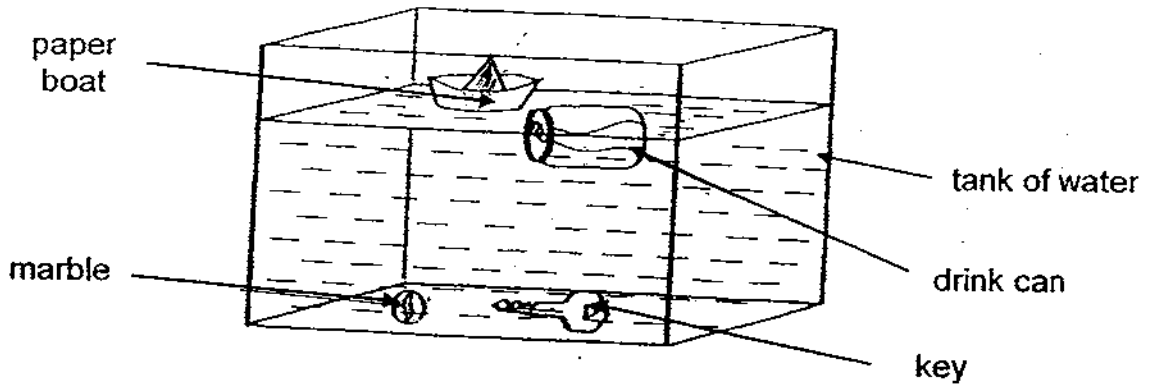
- (a) Rank the material (A, B, C) according to the amount of water it can absorb. [1]



- (b) ~~Based on the above~~ results, which material is the best for making running T-shirts? Explain your answer. [2]



44. Howard filled a tank with water and put some objects into the water and observed what happened to them. The diagram below shows the result of his experiment.



(a) He then classify the objects according to their ability to float and sink. Complete the table below to show how he could have classified them. [2]

Float	Sink

(b) If the drink can and the key are made of the same material, state a reason why they behave differently in water. [2]



****End of Paper****

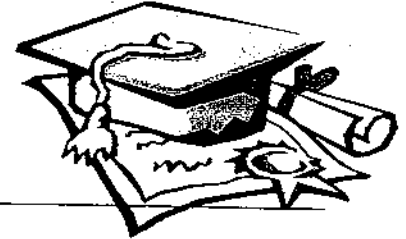


ANSWER SHEET

EXAM PAPER 2009

SCHOOL : CHIJ PRIMARY
SUBJECT : PRIMARY 3 SCIENCE

TERM : SA1



Q1	Q2	Q3	Q4	Q5	Q6	Q7	Q8	Q9	Q10	Q11	Q12	Q13	Q14	Q15	Q16	Q17
3	3	4	2	1	1	3	4	1	2	4	4	1	1	3	2	2

Q18	Q19	Q20	Q21	Q22	Q23	Q24	Q25	Q26	Q27	Q28	Q29	Q30
4	3	3	3	4	2	2	1	4	1	1	1	1

31)a)P, S, Q, R

b)i)All R absorb food from dead or living things but only some S absorb food from the surrounding.

ii)All of organism R cannot move freely from place to place while some of organism S can move freely from place to place.

32)a)The leaves of the mimosa plant will close up when we touch them.

b)Living things respond to touch.

33)a)T b)T c)T d)F e)F f)F

34)a)i)scales ii)fin iii)gill cover iv)tail

b)It protects the body of the fish.

c)The fish will not be able to swim.

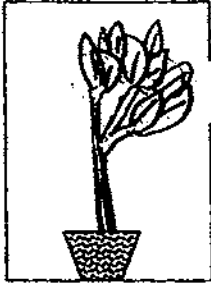
35)i)A spider has 8 legs while the mosquito has 6 legs.

ii)The mosquito has wings but the spider does not have wings.

36)a)After 10 days, A and B the living thing in B will still be growing well.

b)A is a fungi so it can absorb food from decaying materials in the soil. B is a plant so it can make its own food. C is an animal which cannot make its own food and so its most likely to die without food after 10 days.

37)



38)a)Glass b)It is transparent

39)a)Pine tree. b)Conifers.

40)a)Metal: Hard and strong.

b)Plastic: Flexible, does not break easily. Waterproof.

41)a)animal P has 4 legs and gives birth to young alive.

b)Q. Q does not give birth young alive but P, S and R give birth to young alive.

42)a)Larry would observe that the fresh bread in plastic bag A would have mould on it, while the toasted bread in plastic bag B would not have any mould on it.

b)Mould needs water to grow and there is water on bread A. There is no water on bread B and so mould cannot grow.

43)a)A, C, B

b)material B. It absorbs the most perspiration of the runner.

44)a)Float: Paper boat, drink can

Sink: Key, marble

b)The air in the drink can makes it float on water.