



AI TONG SCHOOL

2011 SEMESTRAL ASSESSMENT (1) PRIMARY THREE SCIENCE

DURATION : 1hr 45 min

DATE: 13th May 2011

INSTRUCTIONS

Do not open the booklet until you are told to do so.

Follow all instructions.

Answer all questions.

Name : _____ ()

Class : Primary 3 _____

Parent's Signature ; _____

Date : _____

Total	100
--------------	------------

Section A (30 x 2 marks)

For each question from 1 to 30, four options are given. One of them is the correct answer. Make your choice (1, 2, 3 or 4). Shade the correct oval (1, 2, 3 or 4) on the Optical Answer Sheet.

1. Study the table below carefully:

Living Things	Non-Living Things
Seeds	Wind
Water	Rock
Mushroom	Moving Car

Which one of the above has been grouped wrongly?

- (1) Wind
- (2) Water
- (3) Seeds
- (4) Moving car

2. Which of the following statements show that living things respond to changes around them?

- A A zebra ran when it saw a lion nearby.
- B John moved his hand away from a hot kettle.
- C A bird flew away when it saw a boy coming closer to it.
- D A mimosa plant folded its leaves when a bird stepped on it

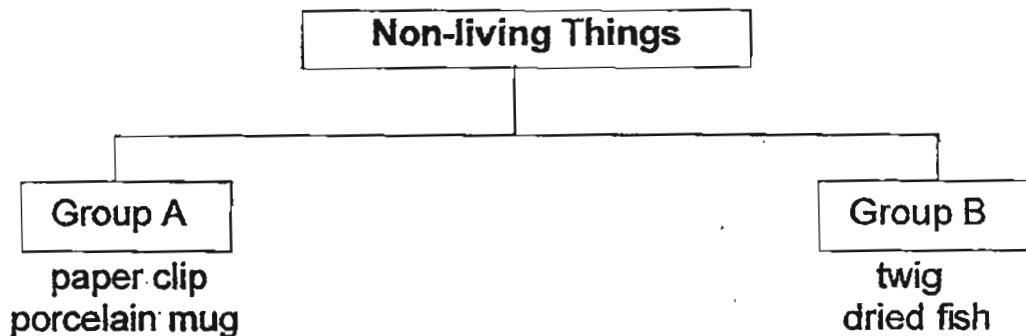
- (1) A and B only
- (2) A and C only
- (3) A, B and C only
- (4) A, B, C and D

3. Which of the following statements is/are correct?

- A All living things need water.
- B Only animals that swim need water.
- C Non-living things can move by themselves at night.
- D Plants are the only kind of living things that reproduce.

- (1) A only
- (2) A and C only
- (3) A and D only
- (4) C and D only

4. The diagram below shows how some non-living things are classified.



Which one of the following things can be classified under Group B?

- (1) paper bag
- (2) glass bottle
- (3) marble table
- (4) metal spoon

5.

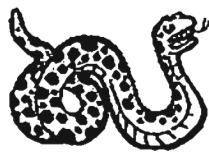


In what ways are the things above similar?

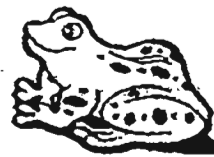
- A They can grow.
- B They can have young.
- C They can make food.
- D They are living things.

- (1) A only
- (2) A and C only
- (3) A, B and D only
- (4) A, C and D only

6. Study the two pictures below carefully.



snake

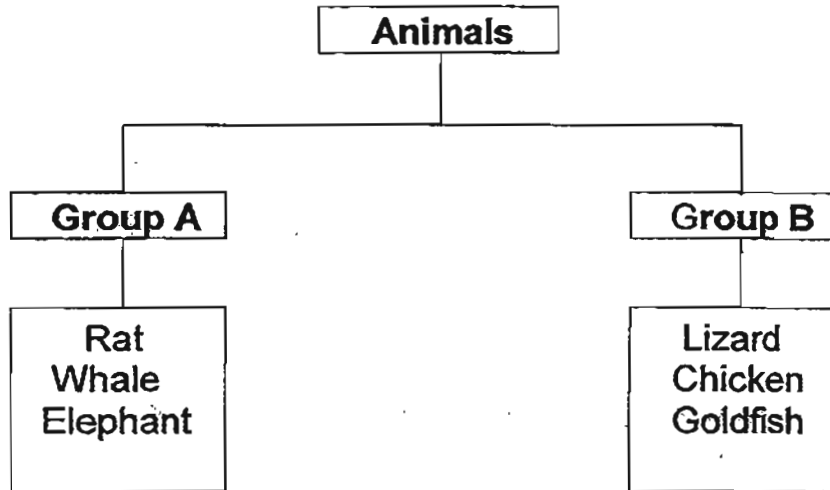


frog

Which one of the following sentences describes what you are able to see from the pictures above?

- (1) Both animals have spots on their body.
- (2) Both animals need air, food and water.
- (3) The frog eats insects while the snake eats mice.
- (4) The frog moves by jumping and the snake moves by gliding.

7. The classification diagram shows 2 groups of animals. Study it carefully and answer the question.



Which of the following correctly describes the animals in each group?

	Group A	Group B
A	Animals that live on land	Animals that live in water
B	Animal eaters	Plant eaters
C	Animals that give birth to their young	Animals that lay eggs
D	Small animals	Big animals

- (1) A
- (2) B
- (3) C
- (4) D

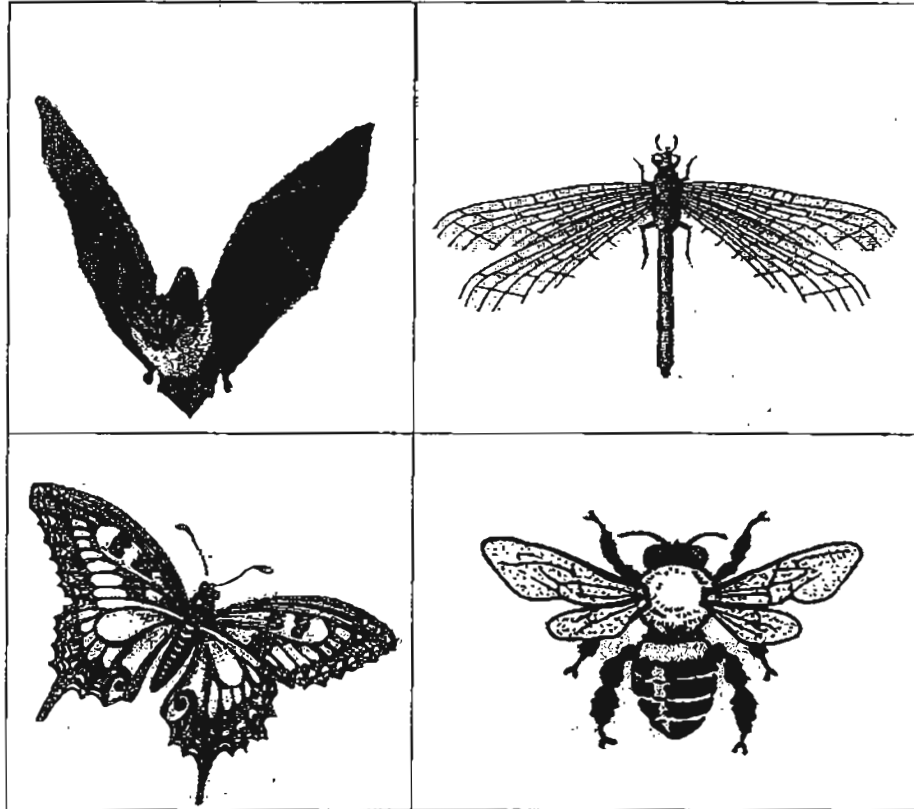
8. Daniel was given a list of 6 animals to classify. He classified them in a table as shown below.

Fish	Mammal
Clownfish	Seal
Seahorse	Platypus
Dolphin	Anteater

Which animal has been grouped wrongly?

- (1) Seal
- (2) Dolphin
- (3) Platypus
- (4) Seahorse

9. The following animals are grouped together according to a common characteristic.



Based on what you know about the above animals, how are they grouped?

- (1) All have wings.
- (2) All have feelers.
- (3) All have six legs.
- (4) All have feathers.

10. Rayson caught two different organisms which can fly. One of them is an insect. Which of the following characteristics are important in identifying that the organism is an insect?

- A Two eyes
- B Two wings
- C Two antennae
- D Three body parts

- (1) A and D only
- (2) C and D only
- (3) B, C and D only
- (4) A, B, C and D

11. Peter observed two animals and listed his observations below.

Animal X	Animal Y
Can fly	Cannot fly
Gives birth to young alive	Lays eggs
Body is covered with hair	Body is covered with feathers

Which two animals are most likely to be Animal X and Y?

	Animal X	Animal Y
(1)	grasshopper	sparrow
(2)	goat	ant
(3)	bat	ostrich
(4)	bee	penguin

12 Animal X has the following characteristics:

- It lays eggs.
- It breathes through gills.
- It has an outer covering of scales.

Which one of the following can be animal X?

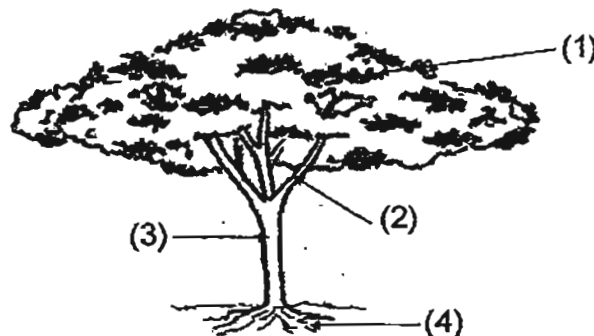
- (1) snake
- (2) dolphin
- (3) guppy
- (4) rainbow fish

13 Which of the following characteristic or characteristics can we use to tell an animal apart from a plant?

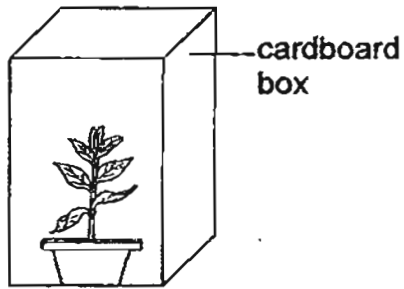
- A An animal needs air but a plant does not.
- B An animal needs food but a plant does not.
- C An animal can respond but a plant cannot.
- D An animal cannot make its own food but a plant can.

- (1) C only
- (2) D only
- (3) A and C only
- (4) A, B and D only

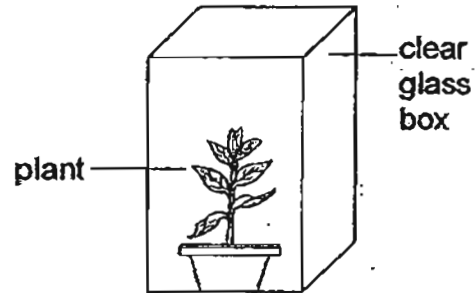
14 Which part of the plant below makes food for the plant?



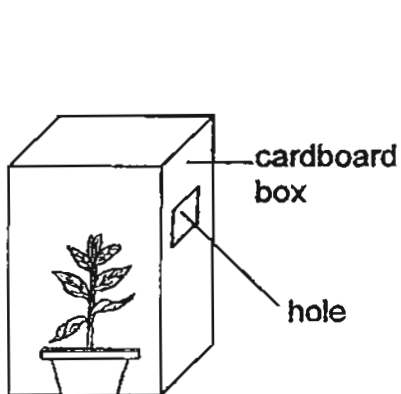
15. Jenny wanted to find out if plants respond to sunlight. Which of the following set-ups will be most suitable for her experiment?



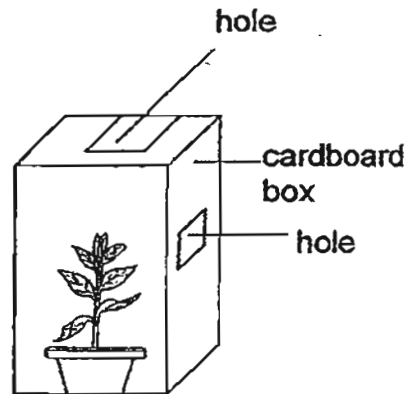
(1)



(2)



(3)



(4)

- 16 Which one of the following is not a flowering plant?

- (1) rice
- (2) pine
- (3) hibiscus
- (4) lantana

17 Study the pictures below.

A



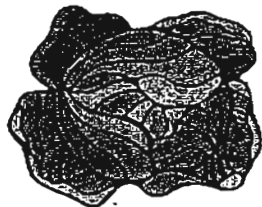
cucumber

B



cauliflower

C



cabbage

D



brinjal

Which of the above are fruits?

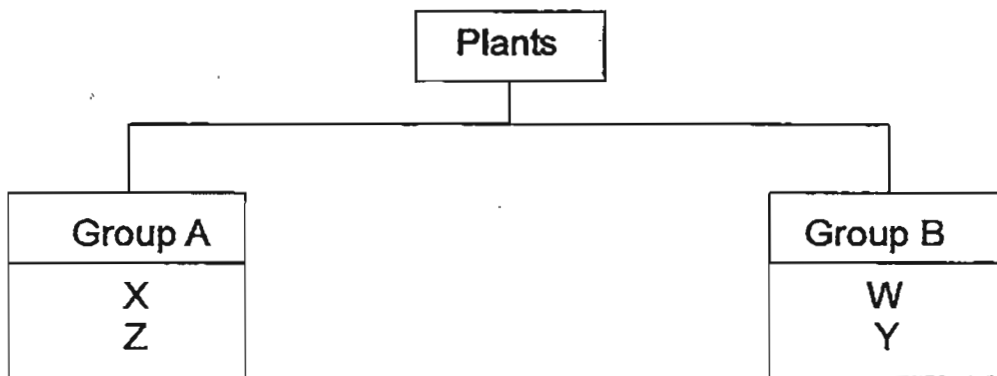
- (1) A and B only
- (2) A and D only
- (3) A, B and C only
- (4) A, B, C and D

Some plants, W, X, Y and Z, have common characteristics as shown in the table below.

A tick (✓) in the box indicates the presence of a certain characteristic.

Characteristic	Plant			
	W	X	Y	Z
found on land	✓	✓		
reproduces by spores		✓		✓
bears flowers	✓		✓	

Using the information above, Janet drew the following diagram to classify them.



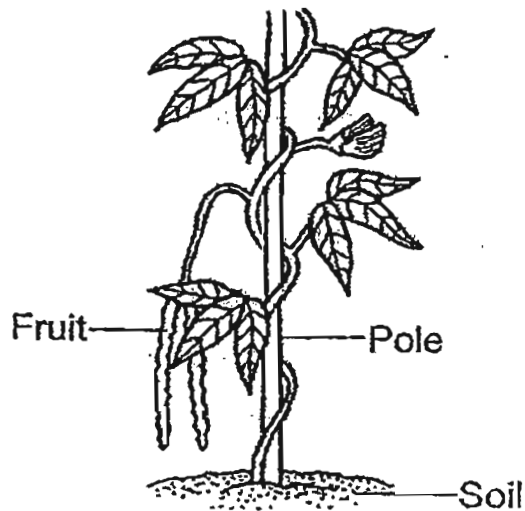
What are the suitable sub-headings for Group A and Group B?

	Group A	Group B
(1)	ferns	fungi
(2)	fungi	non-flowering plants
(3)	land plants	water plants
(4)	non-flowering plants	flowering plants

19 Which of the following statements about flowering plants is false?

- (1) Flowering plants produce fruits.
- (2) Some flowering plants have spore bags.
- (3) All flowering plants can make their own food.
- (4) Some flowering plants live on land while others live in water.

20 The diagram below shows a plant growing in the garden.



Which of the following statements is/are correct?

- A This plant has roots.
 - B This plant reproduces from spores.
 - C This plant is a flowering plant.
-
- (1) B only
 - (2) A and B only
 - (3) A and C only
 - (4) A , B and C

21 Which of the following statements is true about spores?

- A They are light and small.
- B They are only produced by fungi.
- C They are only found in non-flowering plants.

- (1) A only
- (2) C only
- (3) A and C only
- (4) B and C only

22 Which of the following statements show the characteristics of mould?

- A Mould turns bread mushy.
- B Mould can also grow on leather.
- C Mould is reproduced by spores.
- D Moulds do not make their own food.

- (1) A and B only
- (2) A and C only
- (3) A , B and C only
- (4) A , B , C and D



Su Fen found some fungi growing on a tree as shown in the picture above. Which one of the following statements is true about these fungi?

- (1) The fungi are part of the tree.
- (2) The fungi are flowers of the tree.
- (3) The fungi get their nutrients from the tree.
- (4) The fungi need the tree trunk as a support to absorb more sunlight for growth.

24 Which of the following statements about micro-organisms are true?

- A Yeast makes bread fluffy.
- B All micro-organisms are harmful.
- C Micro-organisms can be seen with the naked eye.
- D Some micro-organisms cause diseases such as sore throats and diarrhoea.

- (1) A and B only
- (2) A and D only
- (3) A,B and C only
- (4) A, B, C and D

- 25 Which of the following materials are used in making the iron as shown below?



- A plastic
- B metal
- C glass

- (1) A only
- (2) A and B only
- (3) B and C only
- (4) A, ~~B~~ and C only
and

26. Four children, Ali, Bob, Cally and Don are talking about raincoats.

Ali says, "Raincoats are made of plastic because it is waterproof."

Bob says, "Raincoats are made of plastic because it is light."

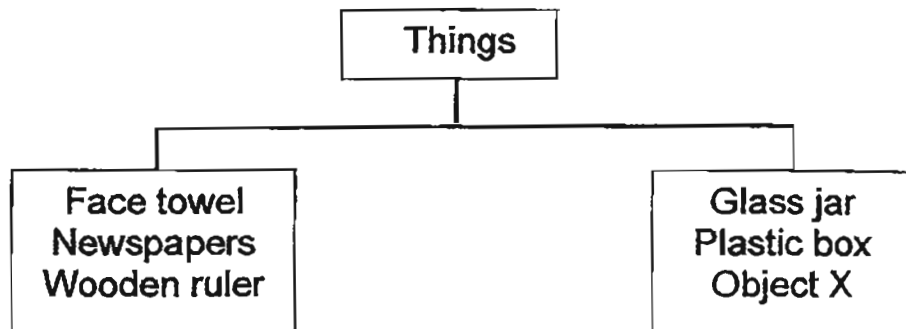
Cally says, "Raincoats are made of plastic because it is durable."

Don says, "Raincoats are made of plastic because it breaks easily."

Which of the four children are correct?

- (1) Ali only
- (2) Ali and Bob only
- (3) Ali, Bob and Cally only
- (4) Ali, Bob, Cally and Don

27. Study the classification table below carefully.



Which of the following is Object X?

- (1) Toothpick
- (2) Paper Clip
- (3) Cotton T-shirt
- (4) Woollen Sweater

28. Which one of the following properties is important when choosing the materials for making the part marked X of the object?



- (1) Soft
- (2) Shiny
- (3) Flexible
- (4) Allows light to pass through

29. Lily knows, without having to open the jar cover, that she needs to refill the sugar in the sugar jar. Which one of the following materials is the sugar jar likely to be made of?

- (1) wood
- (2) ceramic
- (3) aluminium
- (4) clear plastic

30. Which of the following statements about wood is/are true?

- A Wood can float on water.
- B Wood comes from trees.
- C Wood can also be used to make bowls.

- (1) A only
- (2) B only
- (3) B and C only
- (4) A, B and C

Name: _____

Class: 3 ()

Section B (40 marks)

For questions 31 to 44, write your answers in the spaces provided.

31. Mei Mei classified some animals into two groups, P and Q, as shown below.

Group P	Group Q
Dolphin	Angelfish
Tiger	Goldfish
Platypus	Shark

- (a) Give a heading for Group P and Group Q. [1]

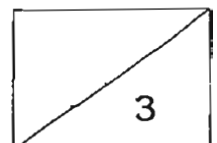
Group P: _____

Group Q: _____

- (b) State two differences between the animals in Group P and Group Q. [2]

(i) _____

(ii) _____



32.



Animal A



Animal B

Based on the pictures above, state two **physical** differences between Animal A and Animal B.

[2]

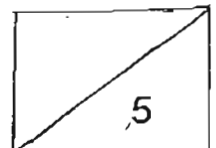
a) _____

b) _____

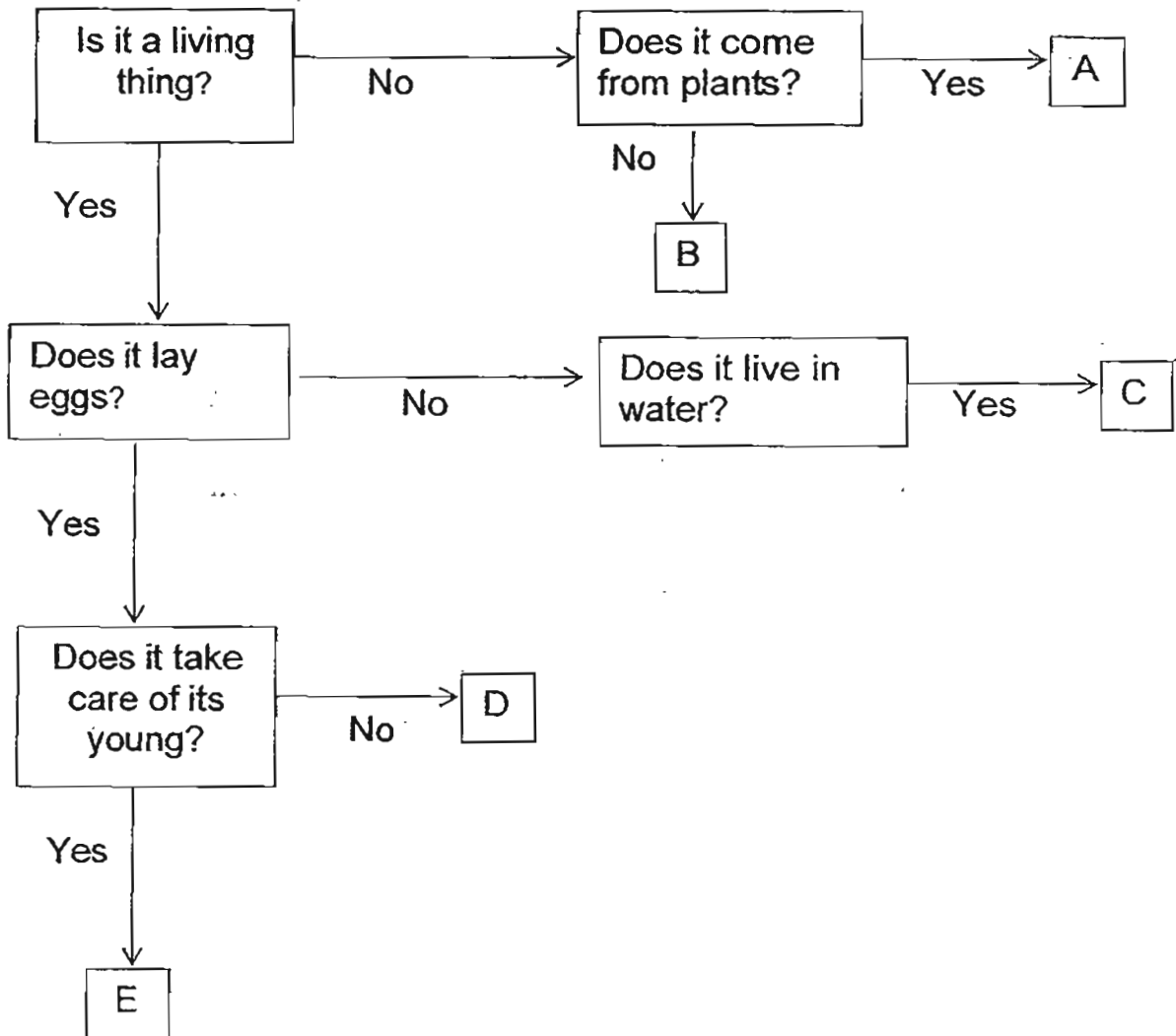
33. Peter has a toy robot. The toy robot can walk and say, "Hello!" when you touch its hand.

a) Name one similarity between the toy robot and a living thing. [1]

b) Name two differences between the toy robot and a living thing. [2]

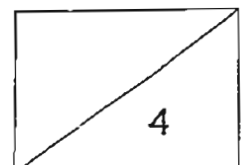


34. Study the following diagram below carefully.



Which of the letters (from A to E) can be used to represent each object below? [4]

- (a) Sparrow: _____
- (b) Guppy : _____
- (c) Woollen shirt : _____
- (d) Grasshopper: _____



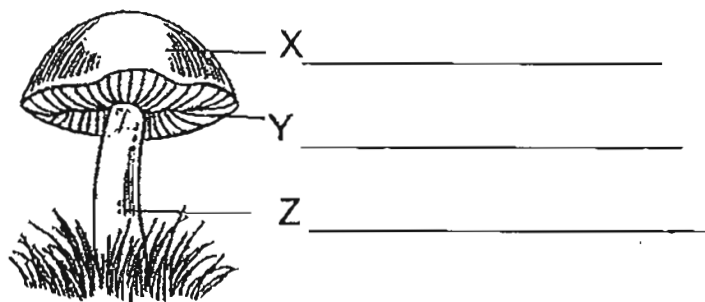
35. Study the table given below. The table shows the characteristics displayed by four things , A , B , C and D.

Thing	Needs air	Needs Sunlight To survive	Can Move From Place to place	Needs water	Needs food
A	√		√	√	√
B			√		
C	√	√		√	
D	√			√	√

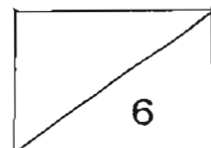
Which of the letters (from A to D) can be used to represent each thing below? [2]

- (a) Rabbit: _____
- (b) Papaya plant: _____
- (c) Car : _____
- (d) Bracket fungi: _____

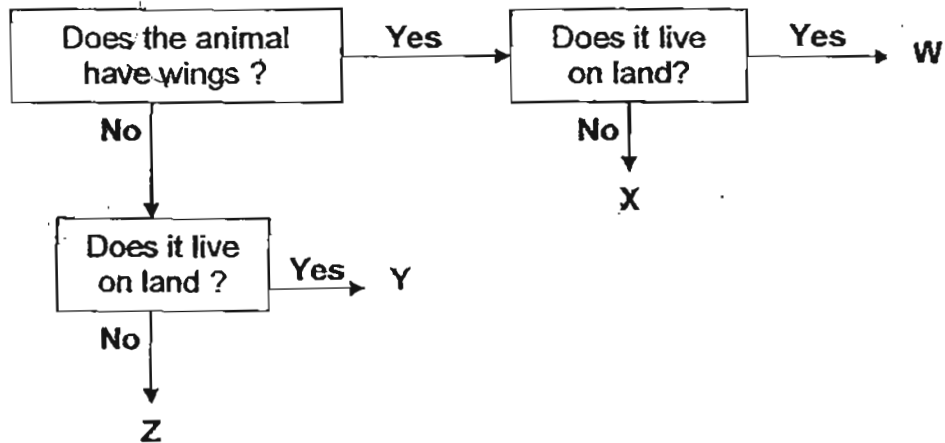
36. The diagram below shows a mushroom.



- (a) Label the parts marked X to Z. [3]
- (b) Why are mushrooms considered as fungi and NOT as non-flowering plants? [1]



37. Annie put some animals into groups, W, X, Y and Z, based on their common characteristics as shown in the flow chart below.



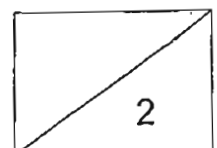
Based on the information above, answer the following questions.

- (a) State **ONE DIFFERENCE** between animals in groups W and Z. [1]

An animal, P, is described as follows:

It is a land animal with a pair of wings.

- (b) Which one of these groups, W, X, Y or Z, does Animal P belong to? [1]



38 Look at the two plants in the diagram below.



Bird's Nest Fern

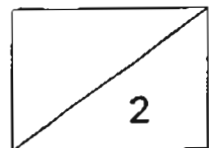


Moss

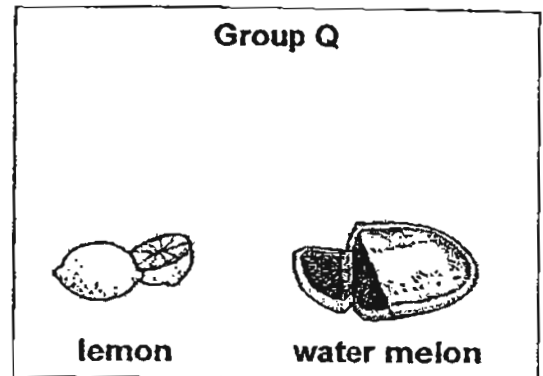
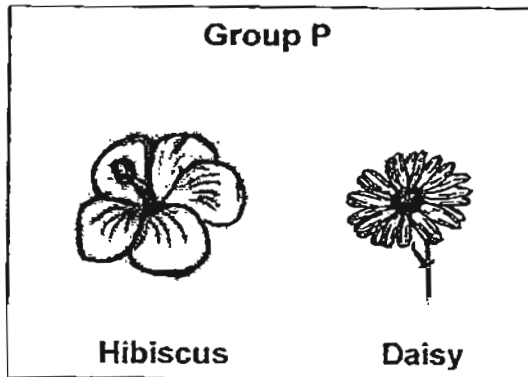
List two similarities between the bird's nest fern and the moss.

a) _____
_____ [1]

b) _____
_____ [1]



39. The diagrams below show two groups of plant parts.



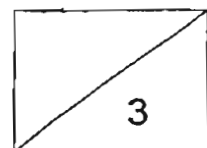
a) Suggest an appropriate heading for each group. [2]

Group P: _____

Group Q: _____

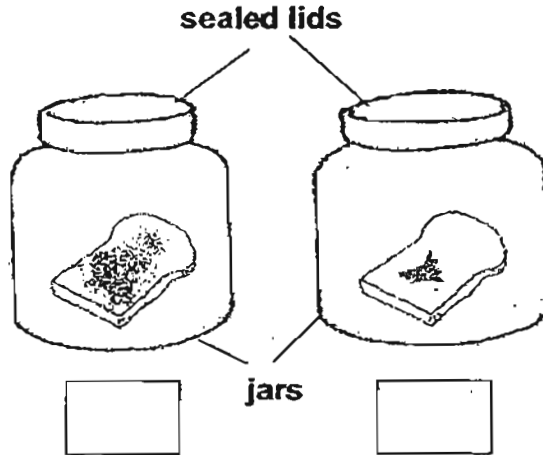
b) State one function for the plant parts in Group Q. [1]

Group Q:



40. Jerica took two identical pieces of bread from a loaf of bread. She toasted one piece and then left both pieces in identical sealed glass jars in a warm place.

After a week, she found more mould growing on one piece of bread than the other.

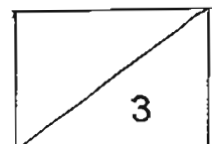


(a) Based on the information above, identify the jar with the toasted bread in it. Put a tick (✓) in the correct box above. [1]

(b) How does bread mould reproduce? [1]

(c) Jerica said that the mould on the bread was a plant. Was she correct?

Give a reason for your answer. [1]



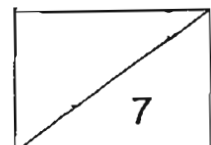
41. Study the list of objects below. Group them under the correct headings in the following table. [3]

rubber band	wooden ruler	leather belt
flag pole	shoe lace	telephone wire

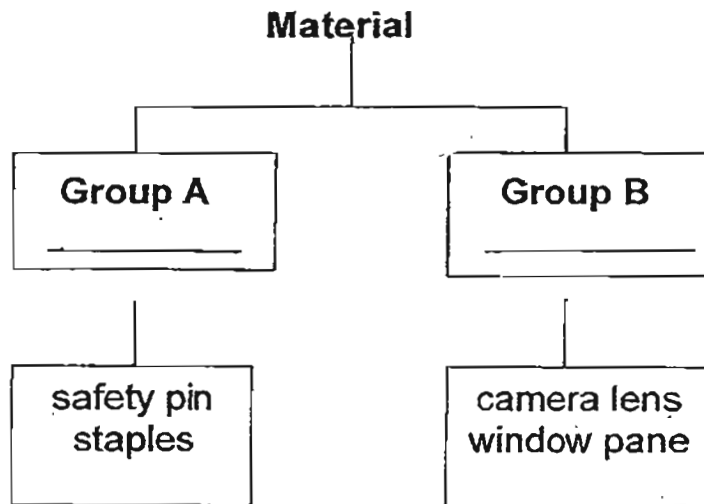
Things that are not flexible	Things that are flexible

42. The following are a list of items. Write down the materials most suitable for making them. [4]

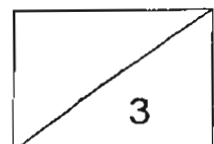
	Items	Suitable Materials
a)	shower curtain	
b)	padlock	
c)	windscreen of car	
d)	flower pot	



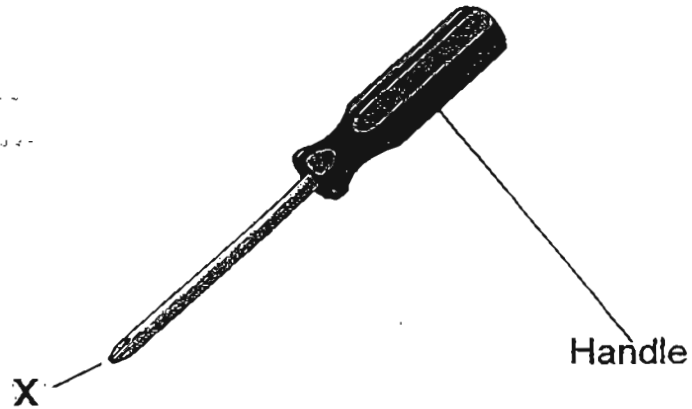
- 43 In the table below, some objects have been classified according to the materials they are made of.



- a) Write down in the boxes the material from which each group of objects is made. [2]
- b) Name another object which is made of the same material as Group B. [1]
-

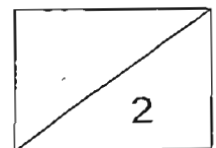


44. The diagram below shows a screwdriver.

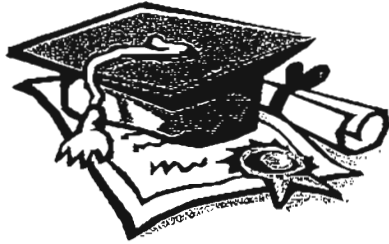


a) Why is Part X of the screwdriver made of metal? [1]

b) Name a material that the handle can be made of. [1]



The End
Please Check Your Work Carefully.



ANSWER SHEET

EXAM PAPER 2011

SCHOOL : AITONG
SUBJECT : PRIMARY 3 SCIENCE

TERM : SA1



Q1	Q2	Q3	Q4	Q5	Q6	Q7	Q8	Q9	Q10	Q11	Q12	Q13	Q14	Q15	Q16	Q17
2	4	1	1	3	1	3	2	1	2	3	4	2	1	3	2	2

Q18	Q19	Q20	Q21	Q22	Q23	Q24	Q25	Q26	Q27	Q28	Q29	Q30
4	2	3	1	4	3	2	2	3	2	4	4	4

31)a)P: mammals Q: Fish

b)i)Group P breathe through while Group Q breathe through.

ii)Group P is covered with hair or fur but Group Q has scales.

32)a)Animal A has eight legs but Animal B has six legs.

b)Animal A has two body parts while Animal B has three body parts.

33)a)They can move.

b)A living thing can grow but a toy cannot.

34)a)E b)C c)B d)D

35)a)A b)C c)B d)D

36)a)X: cap Y: gills Z: stalk

b)It does not make its own food, I does not have leaves.

37)a)Use the information gain, do not think of others. However, if is not land then it must be in water.

b)W.

38)a)They are both non-flowering plants.

b)They reproduce by spores.

39)a)P: Flowering plant. Q: fruit.

b)Produce seeds for the plant.

40)a)

b)Spores.

c)No. It can't make its own food as it does not even have leaves.

41) Things that are not flexible

**flag pole
wooden ruler**

Things that are flexible

**rubber band
leather belt
telephone wire
shoe lace**

**42)a)plastic
b)metal
c)glass
d)ceramic**

**43)a)Group A : metal
Group B : plastic
b)plastic bag.**

**44)a)It is hard and strong.
b)Plastic.**