

Name: _____ ()

Class: Primary 3 _____

CHIJ ST. NICHOLAS GIRLS' SCHOOL



Primary 3

Semestral Assessment 1 – 2014

SCIENCE

Booklet A

15 May 2014

Total Time for Booklets A and B: 1 hour 15 minutes

15 Questions

30 Marks

Do not open this booklet until you are told to do so.

Follow all instructions carefully.

Answer all questions.

Shade your answers in the Optical Answer Sheet (OAS) provided.

This paper consists of 13 printed pages including this cover page.

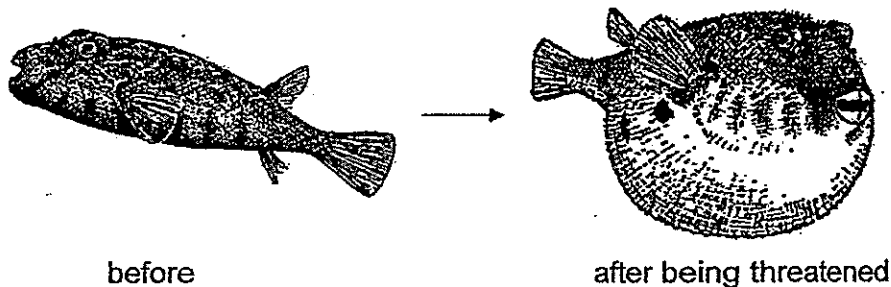
SECTION A (MULTIPLE-CHOICE QUESTIONS) [15 x 2 marks = 30 marks]

For each question from 1 to 15, four options are given. One of them is the correct answer. Make your choice (1, 2, 3 or 4). **Shade the correct oval (1, 2, 3 or 4) on the Optical Answer Sheet (OAS) provided.**

1. Which one of the following is classified **incorrectly**?

	Living Things	Non-Living Things
(1)	Cat	Car
(2)	Shark	Dried leaf
(3)	Metal spoon	Grass
(4)	Red bean seed	Toothbrush

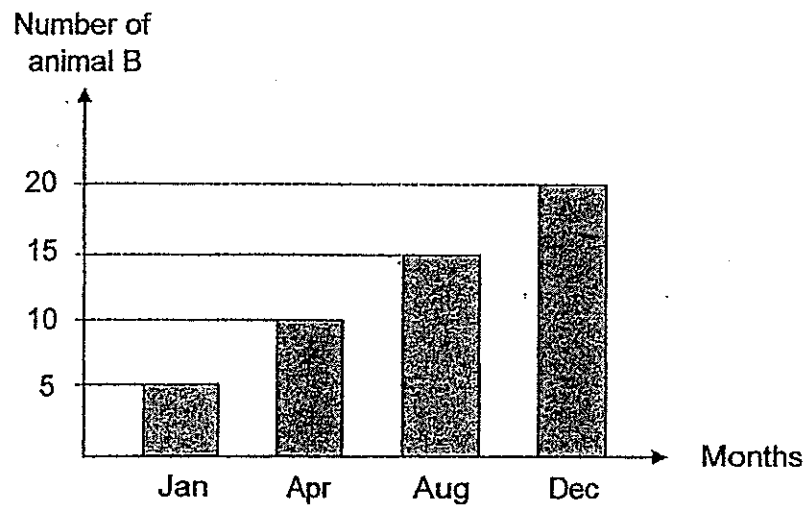
2. The diagram below shows a puffer-fish puffing up its body when it is being threatened.



Based on the above information, which one of the following characteristics of living things is shown by the puffer fish?

- (1) Living things can grow.
- (2) Living things can reproduce.
- (3) Living things can move around freely.
- (4) Living things can respond to changes.

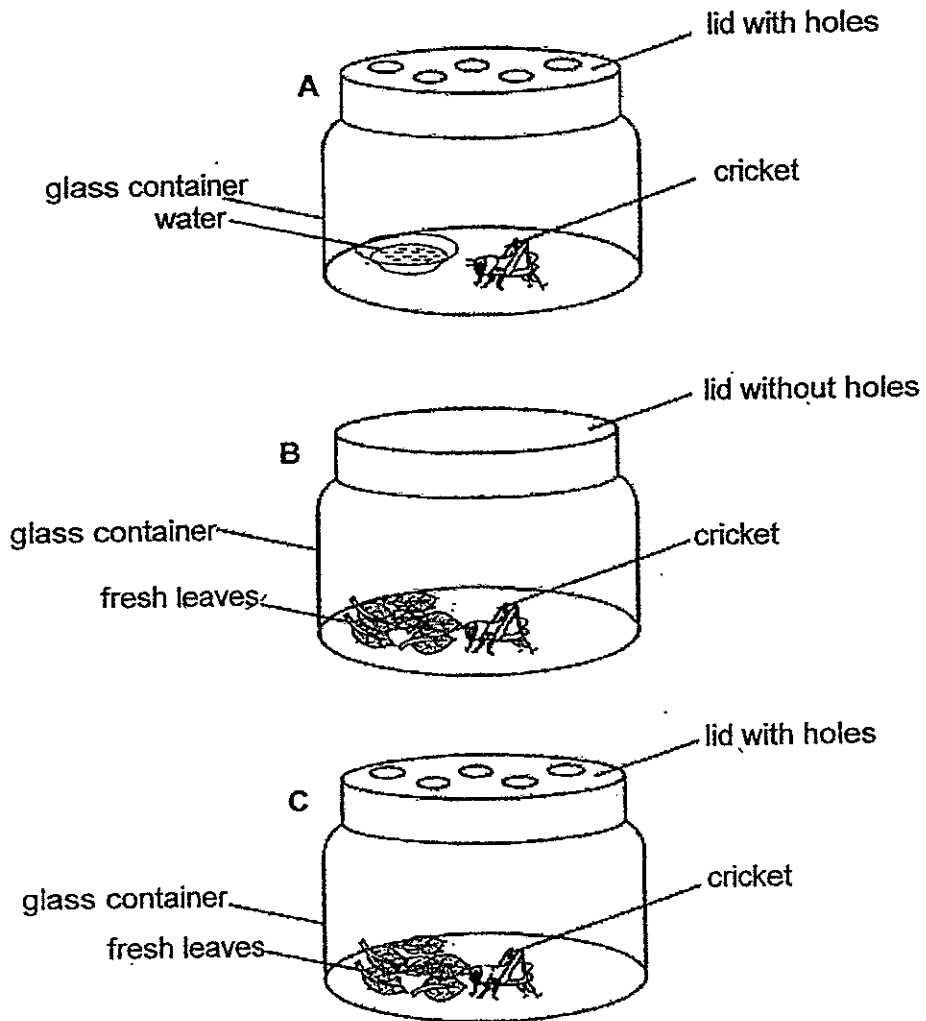
3. The graph below shows the number of animal B over a period of 12 months.



Based on the graph above, which one of the following statements is most likely true?

- (1) Each animal B grew taller every 4 months.
- (2) Each animal B grew bigger every 4 months.
- (3) Animal B reproduced during the 12 months.
- (4) The number of animal B increased the most from August to December.

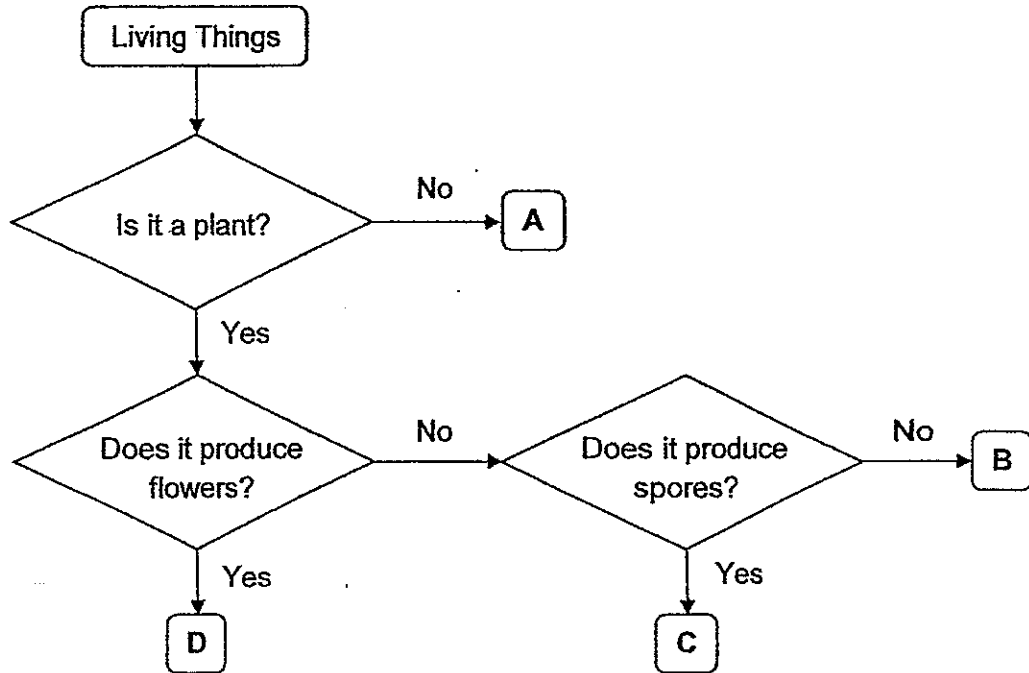
4. Jane kept 3 similar crickets in 3 set-ups, A, B and C, as shown below.



Which one of the following is correct?

	Set-up in which the cricket will live the longest	Set-up in which the cricket will die the fastest
(1)	B	A
(2)	C	B
(3)	C	A
(4)	A	B

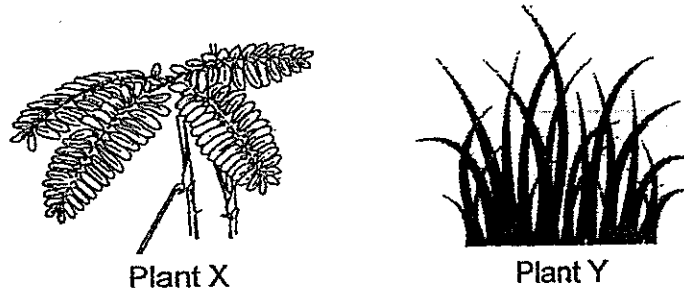
5. Study the flowchart below.



Based on the above flowchart, which one of the following best represents a ladder fern?

- (1) A
- (2) B
- (3) C
- (4) D

6. The diagram below shows two plants, X and Y.



Three pupils, Ali, Bala and Clara, made the following statements about the two plants.

Ali They only need air and water to survive.

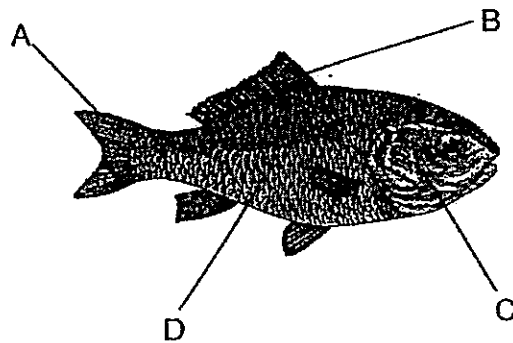
Clara They can make their own food in the presence of light.

Bala They are definitely non-flowering plants as no flowers are seen.

Which of the above pupils has / have made the correct statements?

- (1) Clara only
- (2) Ali and Bala only
- (3) Bala and Clara only
- (4) Ali, Bala and Clara

7. The diagram below shows a fish.



Which of the above parts allow the fish to swim and balance in water?

- (1) A and B only
- (2) A and D only
- (3) B and C only
- (4) C and D only

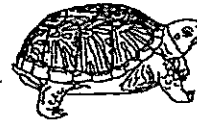
8. A teacher shows her pupils pictures of 4 animals as shown below.



Frog



Crocodile



Terrapin




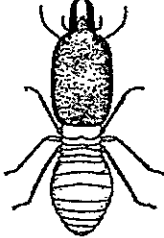


Salamander

What are the similarities among the above animals?

- A They lay eggs.
- B They have scales.
- C They breathe through lungs all the time.
- D They are able to survive both in water and on land.

- (1) A and D only
- (2) B and C only
- (3) A, C and D only
- (4) A, B, C and D

9. Study the classification table below.

Group X	Group Y
 Eagle	 Termite
 Bat	 Spider

Which of the following headings best represent Group X and Group Y?

	Group X	Group Y
(1)	Bird	Insect
(2)	Can fly	Cannot fly
(3)	Covered with feathers	Hard outer covering
(4)	Gives birth to live young	Lays eggs

10. Which of the following statements are **not** true of birds?

- A All birds can fly.
- B All birds have two legs.
- C All birds breathe through lungs.
- D All birds have fur to keep them warm.

- (1) A and D only
- (2) B and C only
- (3) A, B and C only
- (4) A, B and D only

11. Which of the following can only be seen clearly under a microscope?

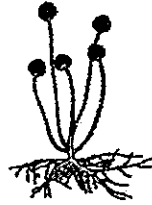
- A Yeast
- B Bacteria
- C Bread mould
- D Button mushroom

- (1) A and D only
- (2) A and B only
- (3) B and C only
- (4) A, B and C only

12. The diagram below shows two living things.



Bird's Nest Fern

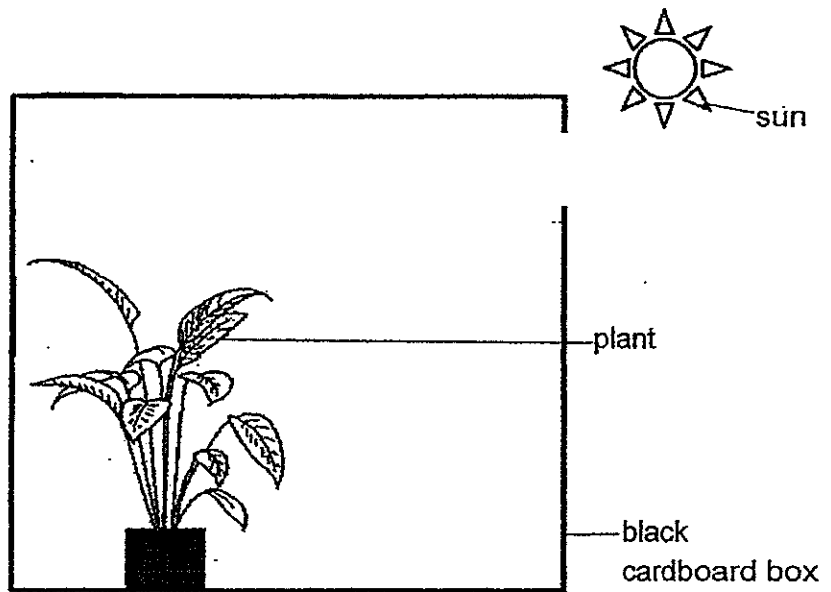


Bread Mould

Which of the following statements are true for both the living things shown above?

- A Both can grow.
 - B Both are plants.
 - C Both can make their own food.
 - D Both are able to respond to changes.
-
- (1) A and D only
 - (2) B and C only
 - (3) A, B and D only
 - (4) A, B, C and D

13. A potted plant was placed inside a black cardboard box with a hole cut out as shown below.



After a week, the plant was observed to grow towards the hole

Which one of the following best explains the above observation?

- (1) The plant is trying to get more air.
- (2) The plant is trying to get more food.
- (3) The plant is trying to get more light.
- (4) The plant is trying to get more moisture.

14. Chloe wants to make a metal key as shown below.

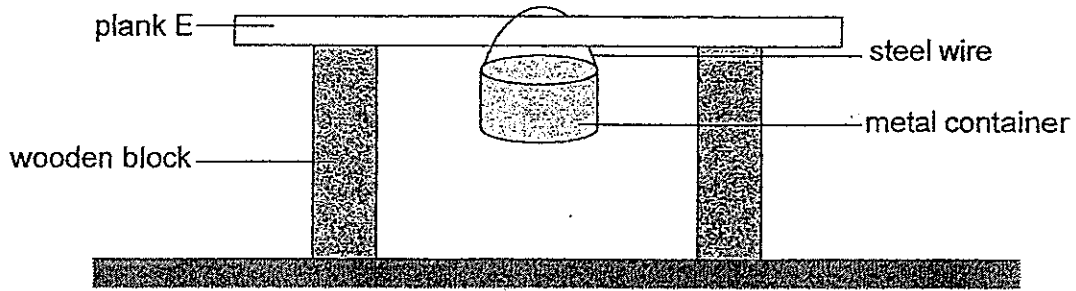


Which of the following properties of metal is/are important for it to be used for making the key shown above?

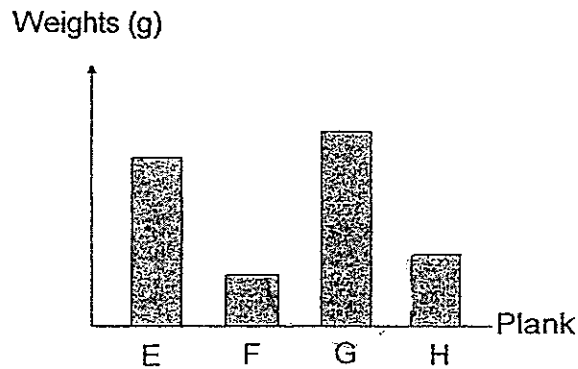
- A Metal is strong.
- B Metal is inflexible.
- C Metal is waterproof.
- D Metal can sink in water.

- (1) A and C only
- (2) B and D only
- (3) A, B and C only
- (4) A, B, C and D

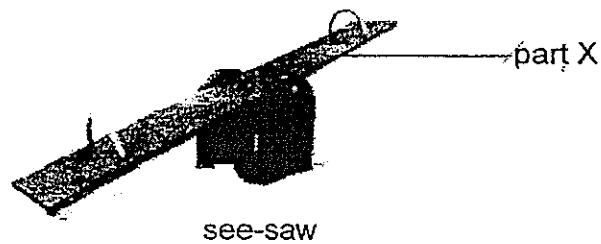
15. Hong Kim set up an experiment to find out the strength of four planks, E, F, G and H, which are made of different materials. He placed plank E on two wooden blocks and hung a metal container in the middle as shown below. He then added metal weights, one at a time, into the container until the plank broke. He repeated the experiment using planks, F, G and H.



He recorded the maximum weight each plank could hold before breaking in the graph below.



Based only on the above results, which one of the planks, E, F, G or H, is most suitable for making part X of the see-saw shown below?



- (1) E
- (2) F
- (3) G
- (4) H

END OF BOOKLET A

Name: _____ ()

Class: Primary 3 _____

CHIJ ST. NICHOLAS GIRLS' SCHOOL



Primary 3

Semestral Assessment 1 – 2014

SCIENCE

Booklet B

15 May 2014

Total Time for Booklets A and B: 1 hour 15 minutes

7 Questions

20 Marks

Do not open this booklet until you are told to do so.

Follow all instructions carefully.

Answer all questions.

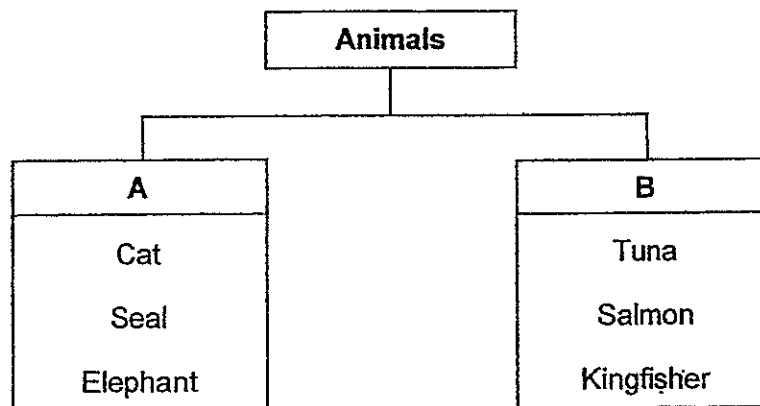
Booklet A	30
Booklet B	20
Total	50
_____ Parent's Signature / Date	

This paper consists of 7 printed pages including this cover page.

SECTION B (OPEN-ENDED QUESTIONS) [20 marks]

For questions 16 to 22, write your answers in this booklet. The number of marks available is shown in the brackets [] at the end of each question or part question.

16. The classification chart given below shows some animals classified according to their animal groups.

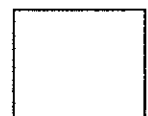


- (a) Based on the classification chart above, which animal(s) has / have been classified **wrongly**? Give a reason for your answer. [1]

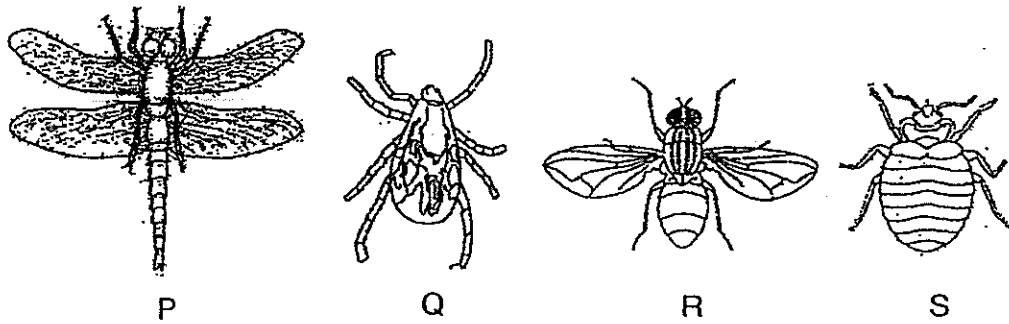
- (b) In the chart above, in which group, A or B, will you place the following animals?

(i) Shark : _____ [1]

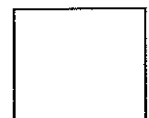
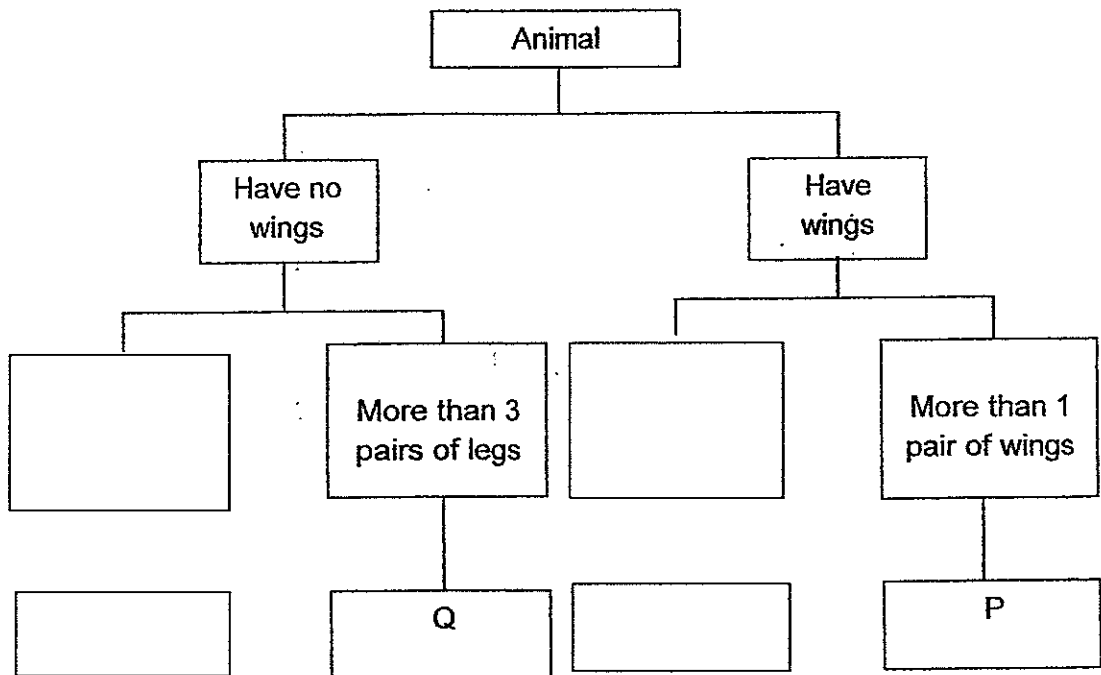
(ii) Dolphin : _____ [1]



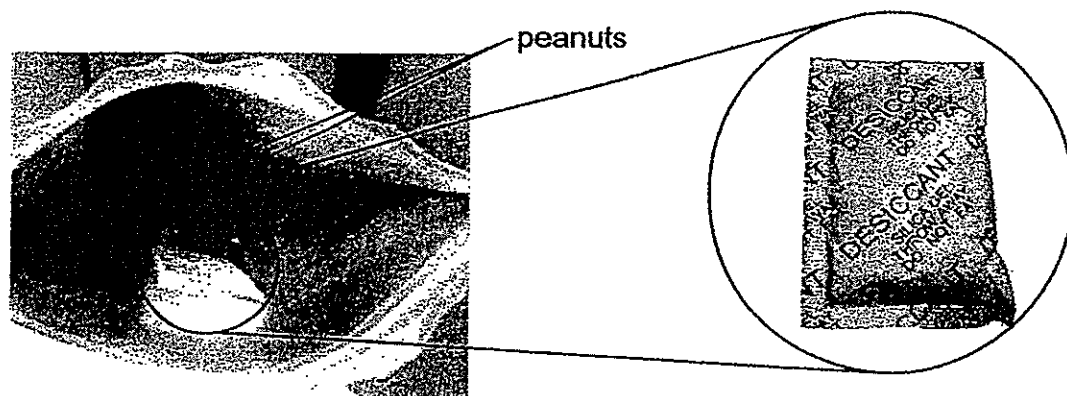
17. The diagram below shows four different animals, P, Q, R and S.



Based on the observations made of the animals given above, complete the classification chart below by filling in the boxes. [2]



18. Su Fen bought a packet of peanuts from the supermarket. Upon opening it, she found a small white packet containing silica gel as shown below.



opened packet of peanut

small white packet containing silica gel

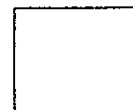
Silica gel is known for its ability to absorb moisture.

Su Fen removed the packet of silica gel before closing the packet. After 3 weeks, she noticed some green patches growing on the peanuts.

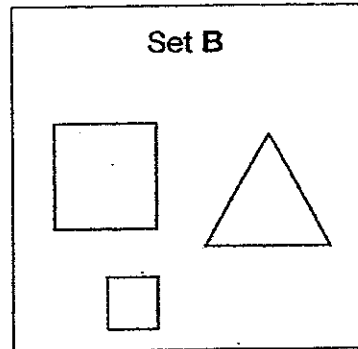
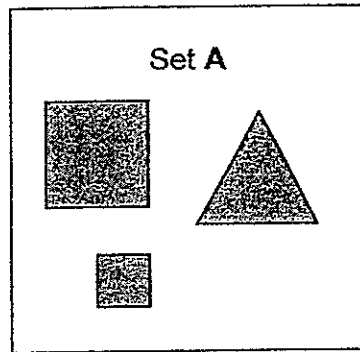
- (a) What do you think the green patches are? [1]

- (b) Based on her observation of the growth of the green patches, Su Fen [1] said, "The removal of the packet of silica gel causes the green patches to grow on the peanuts." Do you agree with her? Explain.

- (c) State **two** other conditions necessary for the green patches to grow on the peanuts. [1]

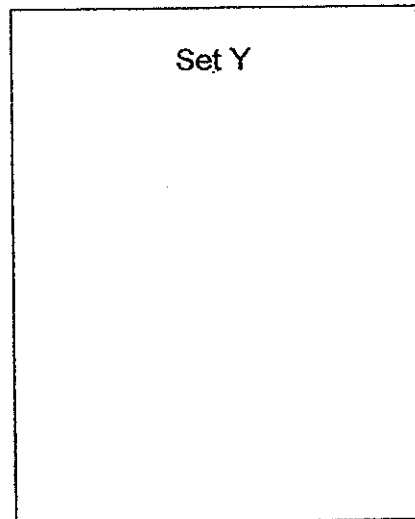
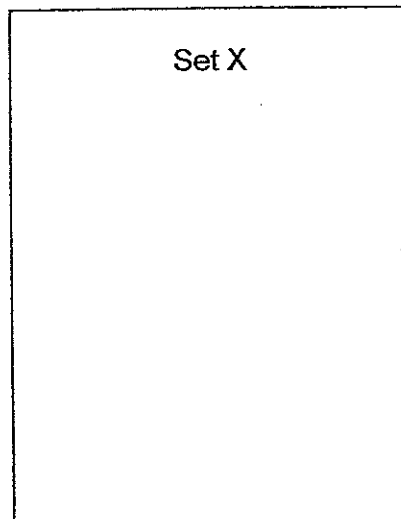


19. Shanti is given two sets of objects as shown below.



(a) The objects above are classified according to whether they are _____ [1]

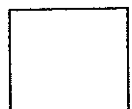
(b) Using **another** characteristic, **draw** in the boxes below to show how you would classify all the above objects. [2]



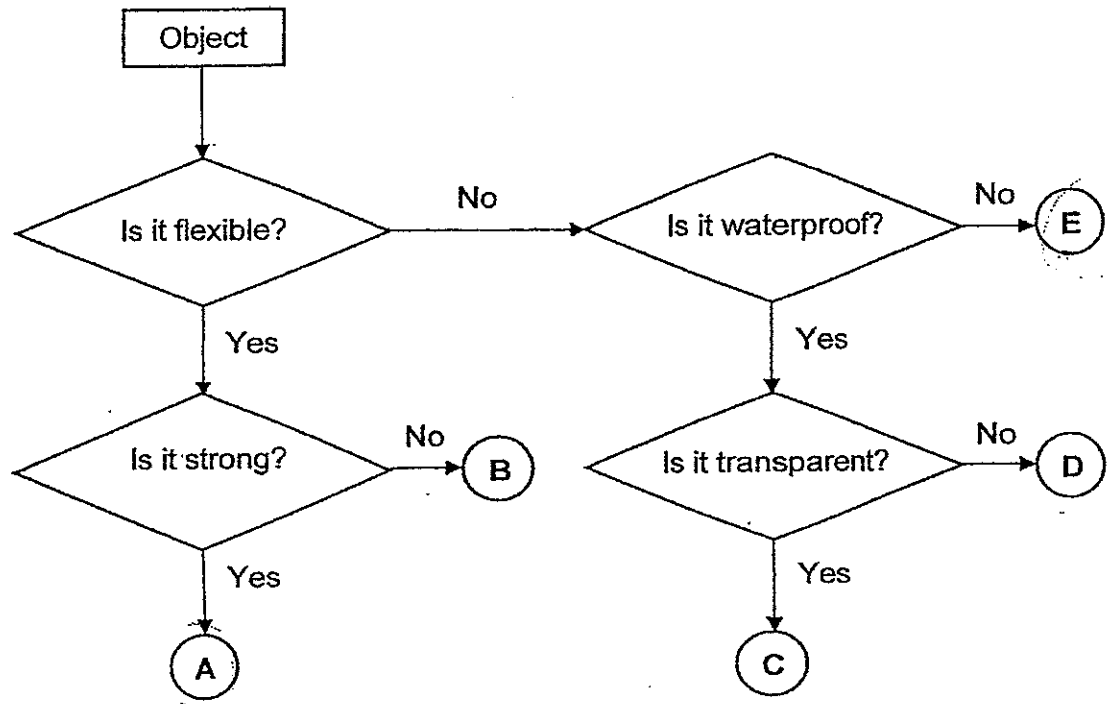
(c) Based on your answer above, give suitable headings for Set X and Set Y respectively.

(i) Set X : _____ [½]

(ii) Set Y : _____ [½]



20. Study the flowchart given below.



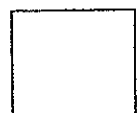
(a) Using the flowchart above, state the similarities between C and D. [2]

(b) Using the flowchart above, state the difference between A and E. [1]

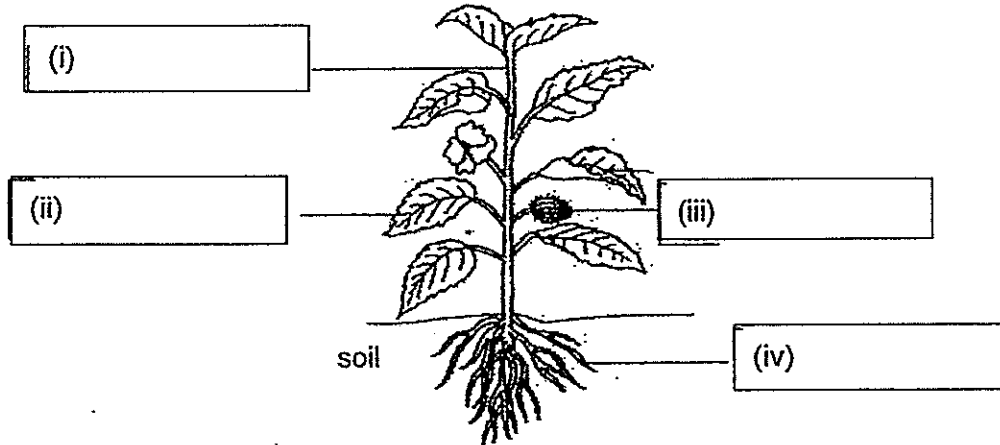
(c) In the flowchart above, where will you place the objects given below?

(i) Leather belt : _____ [½]

(ii) Metal spoon : _____ [½]



21. The diagram below shows a plant. Name the parts labelled (i) to (iv). [2]



22. Kumar observed a bean plant and recorded its height over five weeks in the table shown below.

Week	1	2	3	4	5
Height (cm)	3	5	7	?	11

(a) Based on the above table, what do you think the height of the bean plant will be at the end of week 4? [1]

(b) Kumar's observation shows that living things can

—End of Paper—



EXAM PAPER 2014

LEVEL : PRIMARY 3
SCHOOL : CHIJ ST NICHOLAS
SUBJECT : SCIENCE
TERM : SA1

Q1	3	Q6	1	Q11	4
Q2	4	Q7	1	Q12	1
Q3	3	Q8	1	Q13	3
Q4	2	Q9	2	Q14	3
Q5	3	Q10	1	Q15	3

- Q16 (a) The kingfisher. It is a bird not a fish
(b) (i) B
(ii) A

- Q17 3 pairs of legs S
1 pair of wings R

- Q18 (a) Mould
(b) Yes. Moisture is not removed so mould can grow.
(c) Air and warmth

- Q19 (a) Shaded or not shaded
(b) Set X Set Y



- (c) (i) Set X : Big shapes
(ii) Set Y : Small shapes
- Q20 (a) Both of them are flexible and waterproof.
(b) A is flexible but E is not.
(c) (i) A
(ii) D
- Q21 (i) Stem
(ii) Leaf
(iii) Fruit
(iv) Roots
- Q22 (a) 9cm.
(b) Grow

