



RAFFLES GIRLS' PRIMARY SCHOOL

SEMESTRAL ASSESSMENT (1)

2014

Name: _____ Index No: _____ Class: P3 _____

6 May 2014

SCIENCE

Att: 1 h 15 min

Section A	16
Section B	24
Your score out of 100 marks	
Parent's signature	

SECTION A (18 x 2 marks)

For each question from 1 to 18, four options are given.

One of them is the correct answer. Make your choice (1, 2, 3 or 4).

Shade the correct oval (1, 2, 3 or 4) on the Optical Answer Sheet (OAS) provided.

1. Which one of the following is not a characteristic of all living things?

- (1) They die.
- (2) They reproduce.
- (3) They make their own food.
- (4) They need air, food and water.

2. Which one of the following is not a living thing?

- (1) Fire
- (2) Goldfish
- (3) Mushroom
- (4) Bread mould

3. Which one of the following shows how living things respond to the changes around them?

- (1) A boy becoming heavier.
- (2) A cow giving birth to a young.
- (3) A flower developing into a fruit.
- (4) A snail hiding in its shell when touched.

4. Some things are classified into group A and B as shown in the table below.

A	B
ball	cat
pen	fungi
paper	bacteria

Which of the following headings best describe the objects in A and B?

	A	B
(1)	Living things	Non-living things
(2)	Non-living things	Living things
(3)	Things that were never alive	Things that were once alive
(4)	Things that were once alive	Things that were never alive

5. Which of the following statement(s) is/are true about **all** insects?

- A They have wings.
- B They have 6 legs.
- C They have 3 body parts.
- D They reproduce by giving birth to their young alive.

- (1) B only
- (2) B and C only
- (3) A, B and C only
- (4) A, B, C and D

6. The following table describes the characteristics of animal groups, X and Y.

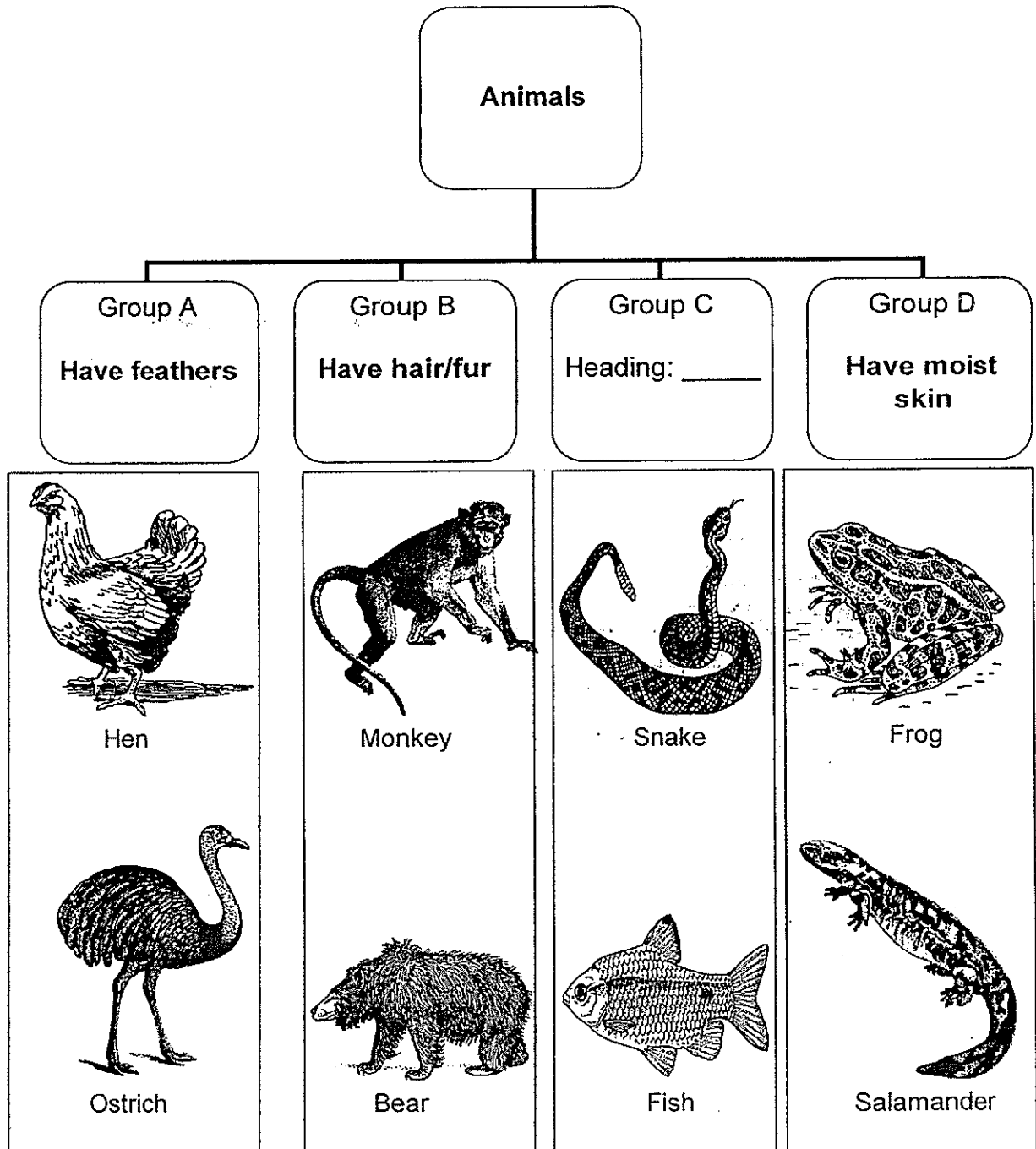
Characteristics	X	Y
Have moist skin		√
Have hair on its body	√	
Give birth to young alive	√	
Live on water and on land		√

Which one of the following best represents animal groups, X and Y?

	X	Y
(1)	Birds	Reptiles
(2)	Mammals	Fish
(3)	Insects	Reptiles
(4)	Mammals	Amphibians

For questions 7 and 8, refer to the classification chart below.

The animals in the classification table below are grouped according to their similarities.
(Note: The animals are not drawn to scale)

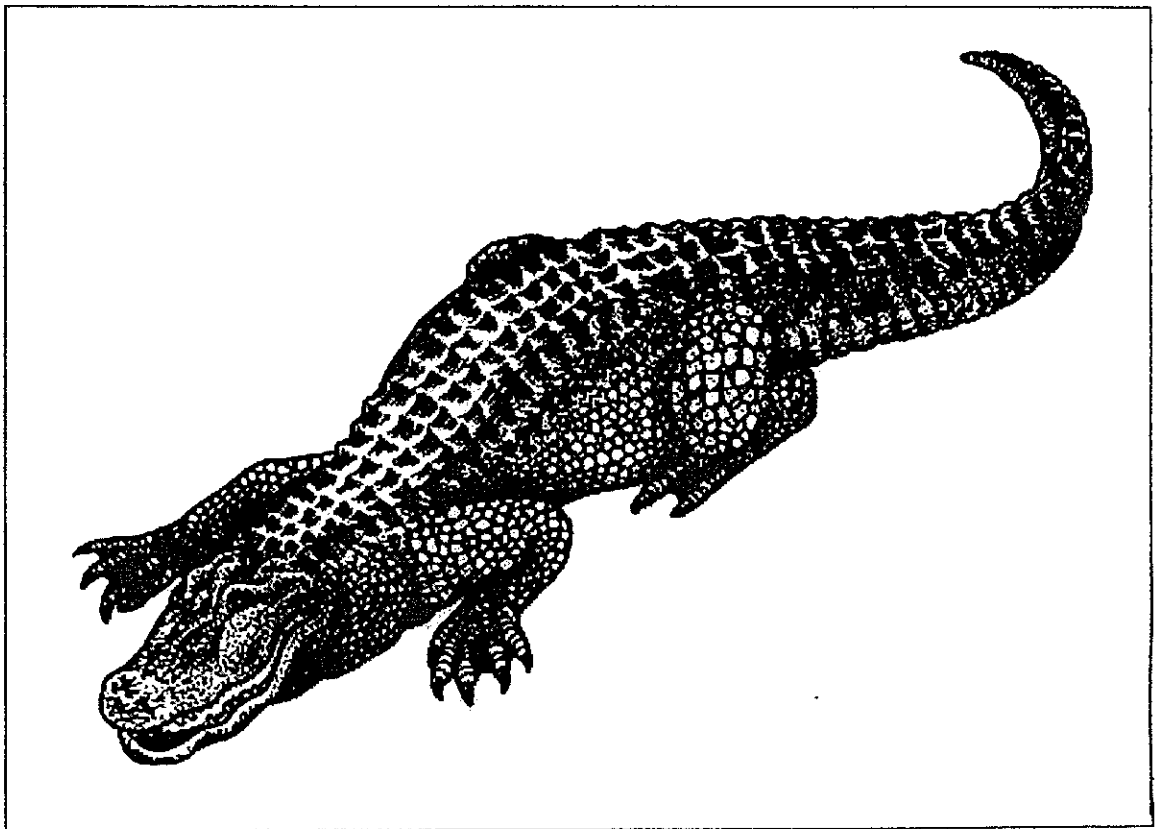


Continue on Pg. 5

7. What is a suitable sub-heading for Group C?

- (1) Have gills
- (2) Have wings
- (3) Have scales
- (4) Have six legs

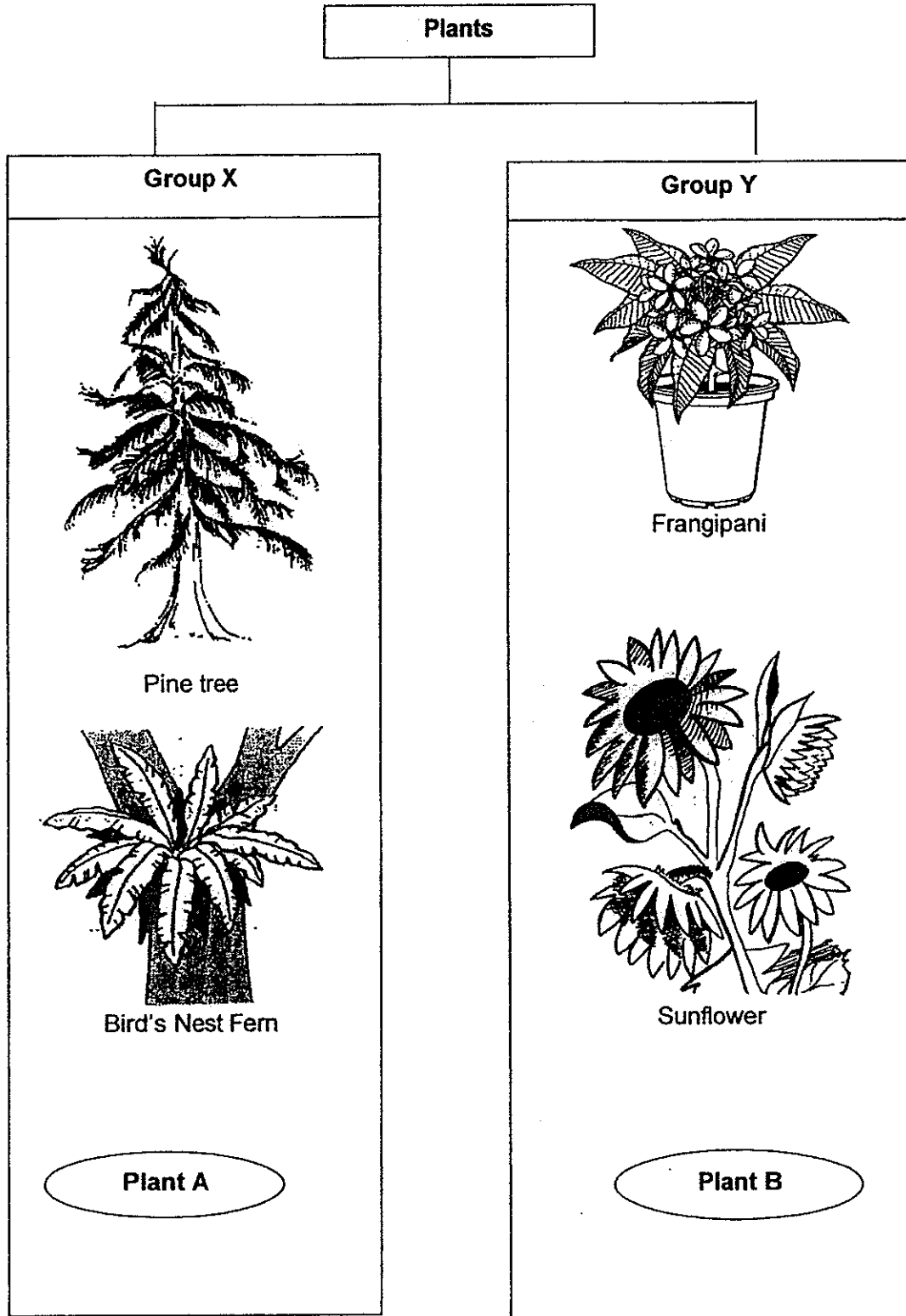
8. Study the animal shown below carefully.



In which group, A, B, C or D, in the classification table would you place the animal shown above?

- (1) A
- (2) B
- (3) C
- (4) D







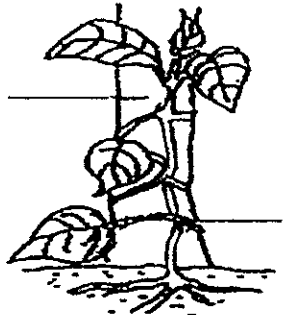

9. Study the classification chart below.
(Note: The plants are not drawn to scale)



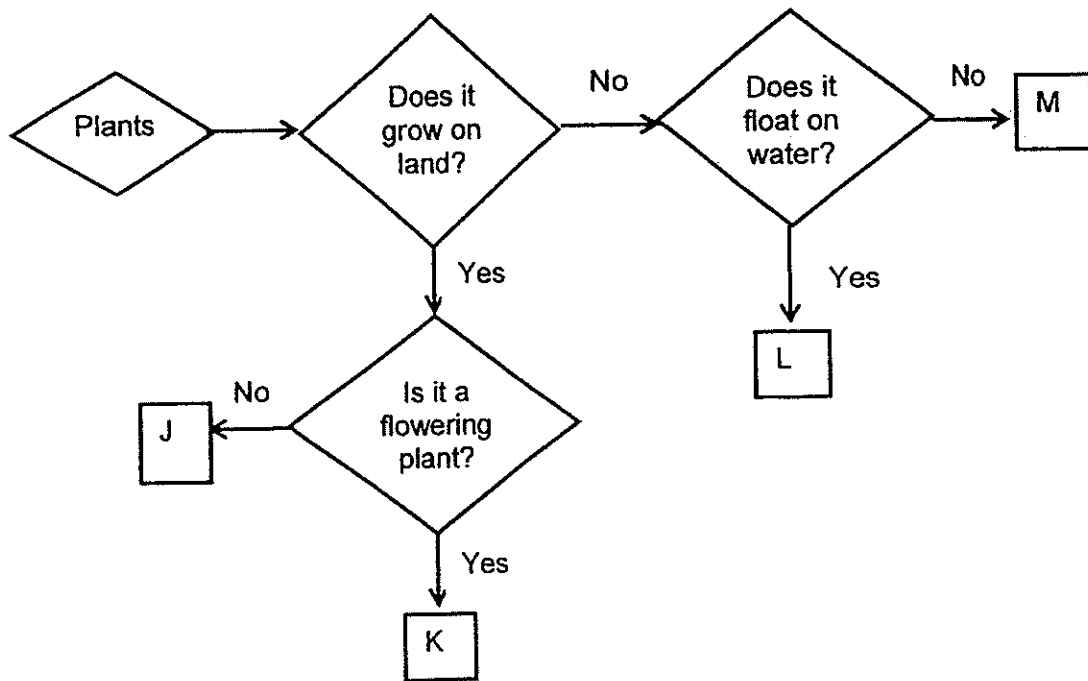
Continue on Pg 7

Based on the information provided in the classification chart,

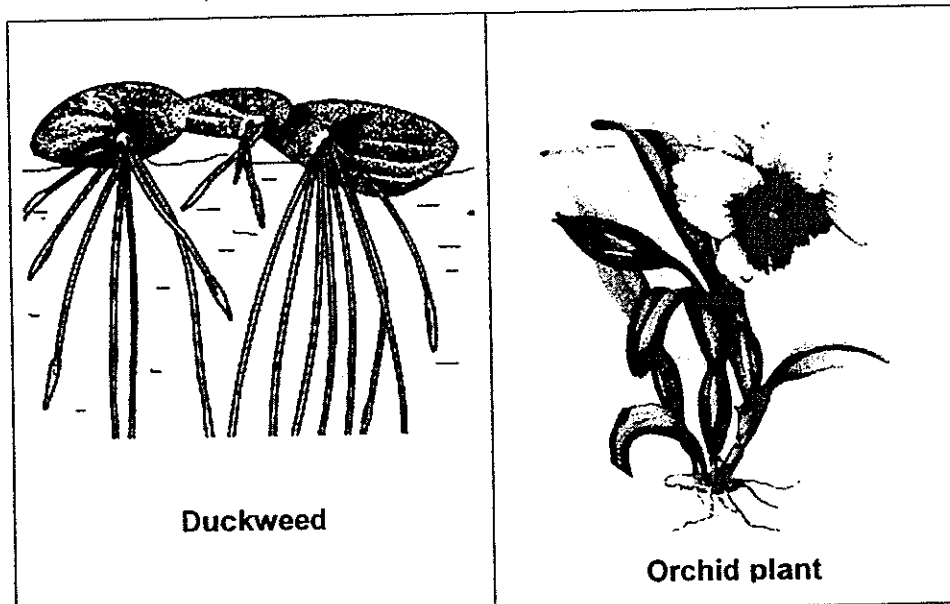
Which one of the following best represents plant A and B respectively?

	A	B
(1)	 Rose	 Mushroom
(2)	 Grass	 Carnation
(3)	 Staghorn fern	 Hibiscus
(4)	 Money Plant	 Sword fern

10. The flow chart below shows how 4 plants, J, K, L and M, are being grouped.



Based on the information above, which one of the following best represent duckweed and orchid plant?



(1)	L	K
(2)	L	J
(3)	K	J
(4)	M	K

11. In the table below, which of the following show the similarities and differences between a non-flowering plant and fungi correctly?

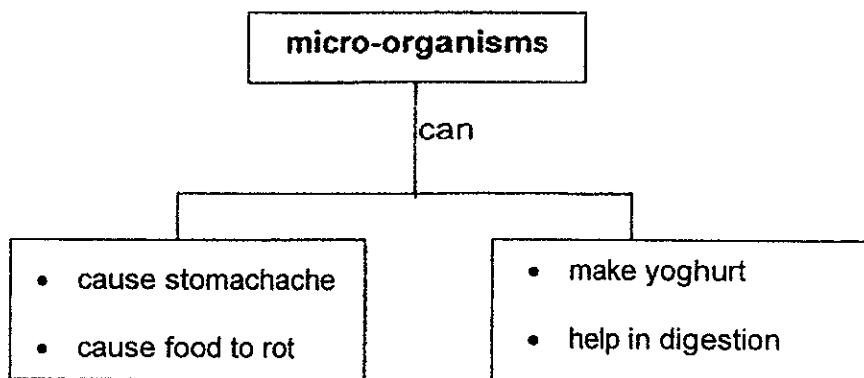
	Similarities	Differences
(1)	Both cannot make their own food.	Non-flowering plants reproduce by spores but fungi reproduce by seeds.
(2)	Both can make their own food.	Non-flowering plants do not bear fruits but fungi bear fruits.
(3)	Both reproduce by spores.	Fungi cannot make its own food but the non-flowering plant can make its own food.
(4)	Both bear flowers.	Non-flowering plants have leaves but fungi do not have leaves.

12. Which of the following statements are true about **all** kinds of bacteria?

- A Bacteria are harmful.
- B Bacteria can reproduce.
- C Bacteria is a group of living things.
- D Bacteria can be seen using magnifying glass.

- (1) A and C only
- (2) A and D only
- (3) B and C only
- (4) B and D only

13. The chart below shows how we can group micro-organisms.

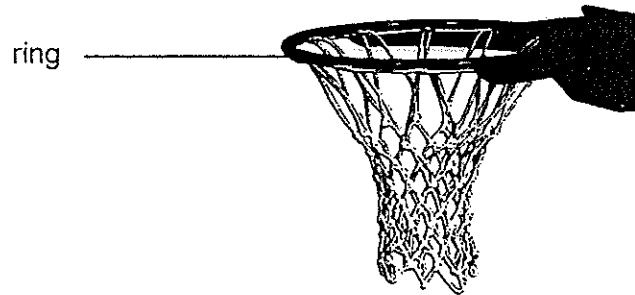


Based on the information above, how are the micro-organisms grouped?

The micro-organisms are grouped according to _____.

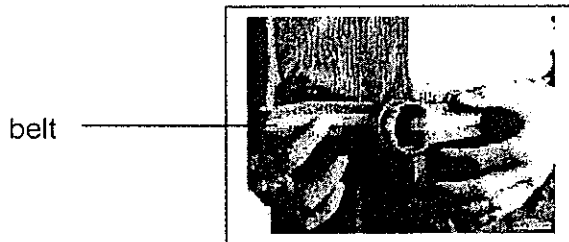
- (1) their size
- (2) whether they are useful to man
- (3) whether they reproduce from spores
- (4) whether they need food to grow well

14. Which one of the following materials is most suitable for making the ring of a basketball hoop found in a basketball court?



- (1) Glass
- (2) Metal
- (3) Fabric
- (4) Cardboard

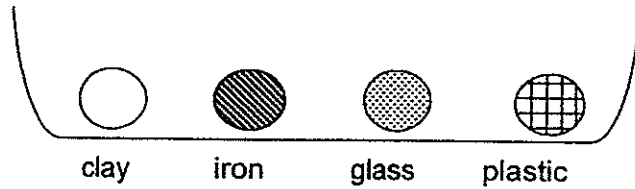
15. Sam needs a belt to hold his pants up.



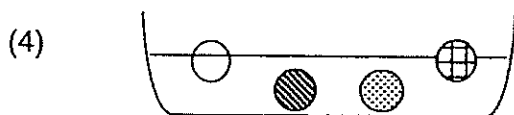
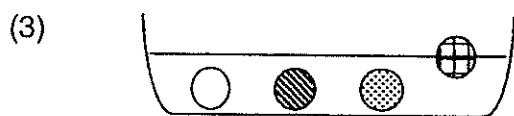
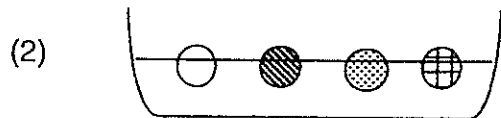
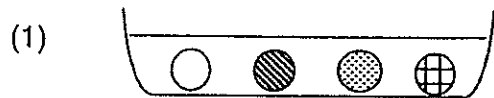
Which one of the following properties of the material is most important to be taken into consideration for it to be chosen to make a belt?

- (1) flexible
- (2) waterproof
- (3) breaks easily
- (4) allow light to pass through

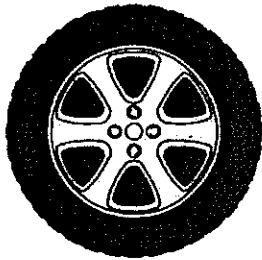
16. 4 solid balls of identical size made of different materials were left in a container as shown below.



Which one of the following correctly shows the position of the balls when the container is half filled with water?



17. The pictures show 3 objects that are made of rubber.



tyre



glove



elastic band

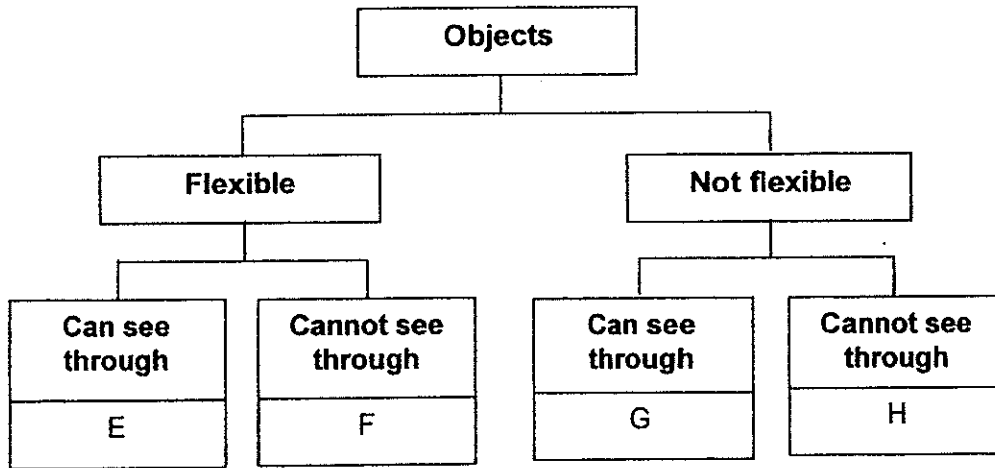
Which of the following are most likely to be the reasons for using rubber to make the above objects?

They are made of rubber because it _____.

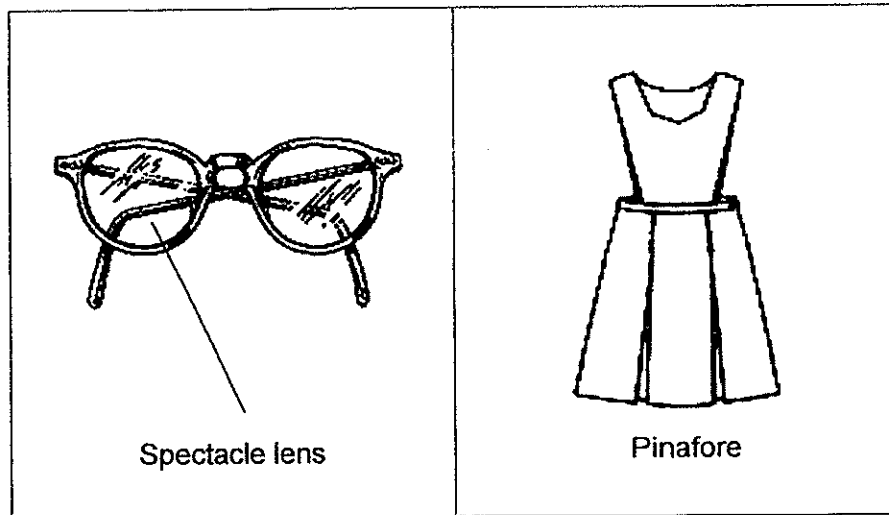
- A is flexible
- B is waterproof
- C breaks easily

- (1) A and B only
- (2) A and C only
- (3) B and C only
- (4) A, B and C

18. Study the classification chart below carefully.

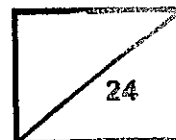


In which groups, E, F, G or H, should the spectacle lens and pinafore be placed?



	Spectacle lens	Pinafore
(1)	G	H
(2)	G	F
(3)	E	F
(4)	E	G

Name : _____ Index No: _____ Class: P3 _____



SECTION B (24 marks)

For questions 19 to 30, write your answers clearly in the spaces provided.

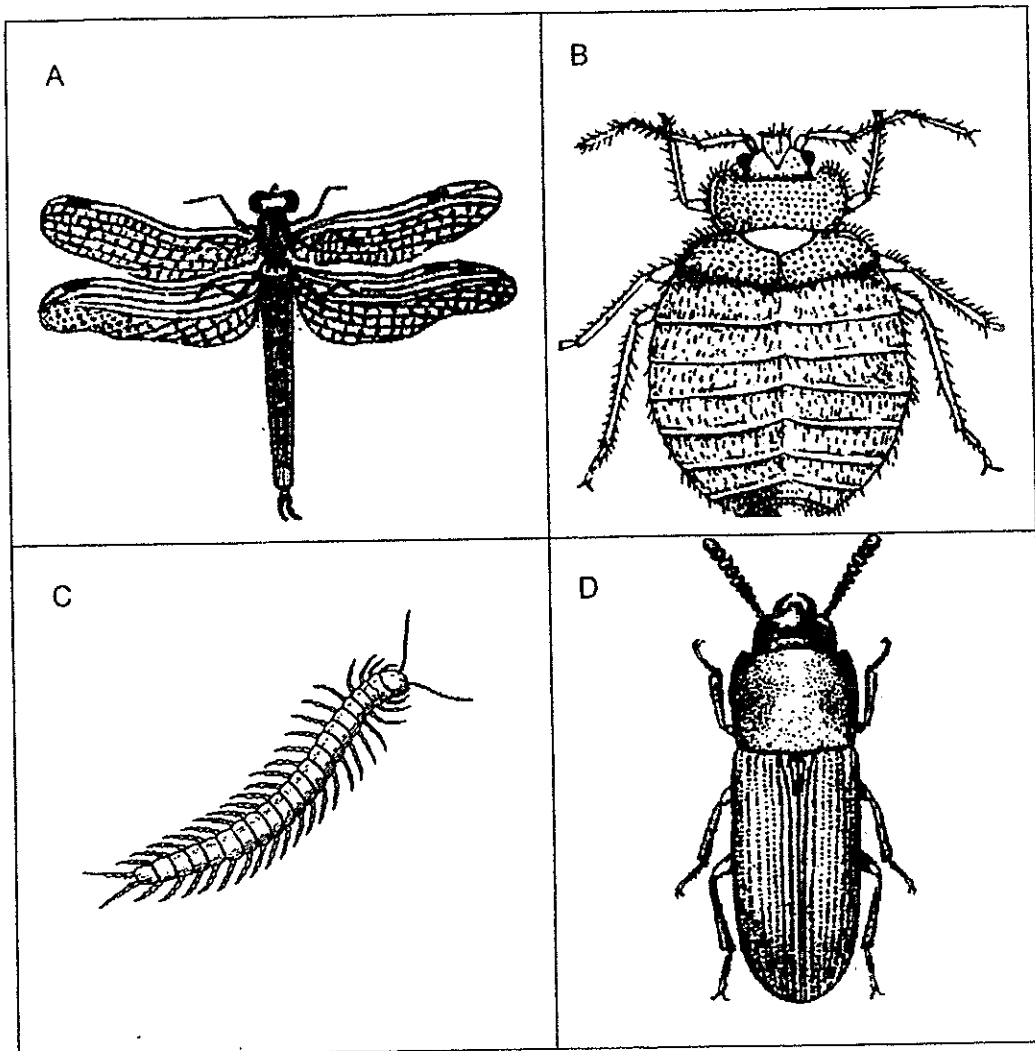
The number of marks available is shown in brackets [] at the end of each question or part question.

19. Study the following statements. Write 'True' or 'False' against each statement in the boxes below. [2]

	Statements	True/False
(a)	Some living things can reproduce.	
(b)	Living things need air, food and water.	
(c)	All living things respond to changes around them quickly.	
(d)	All living things can move by themselves from place to place.	

Score	
-------	--

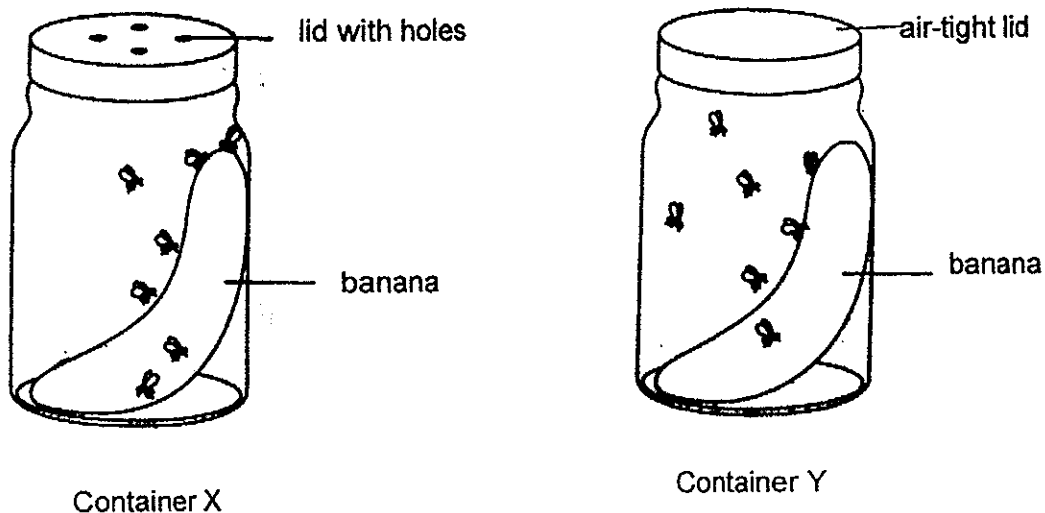
20. Study the organisms (*not drawn to scale*) shown below carefully.



(a) Based on the diagrams above, which one of the animals, A, B, C or D, is not an insect? Give two reasons for your answer. [2]

Score	2
-------	---

21. Sara prepared 2 similar containers, X and Y. She put a banana and 7 flies in each container as shown in the diagrams below. Container X has a lid with holes while Container Y has an air-tight lid. She placed both containers by an open window for 2 days.



At the end of 2 days, she observed that all the flies in one container had died while all the flies in the other container were still alive.

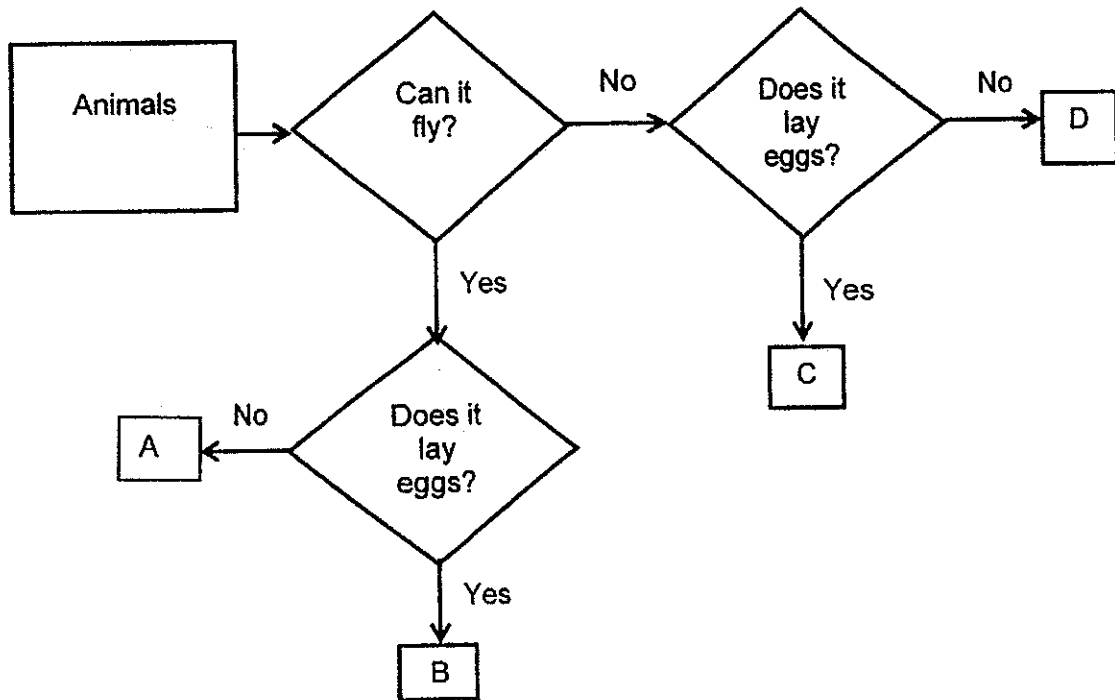
In which of the containers, X or Y, did the flies die?

Explain your answer clearly.

[2]

Score	2
-------	---

22. Study the classification chart below carefully.

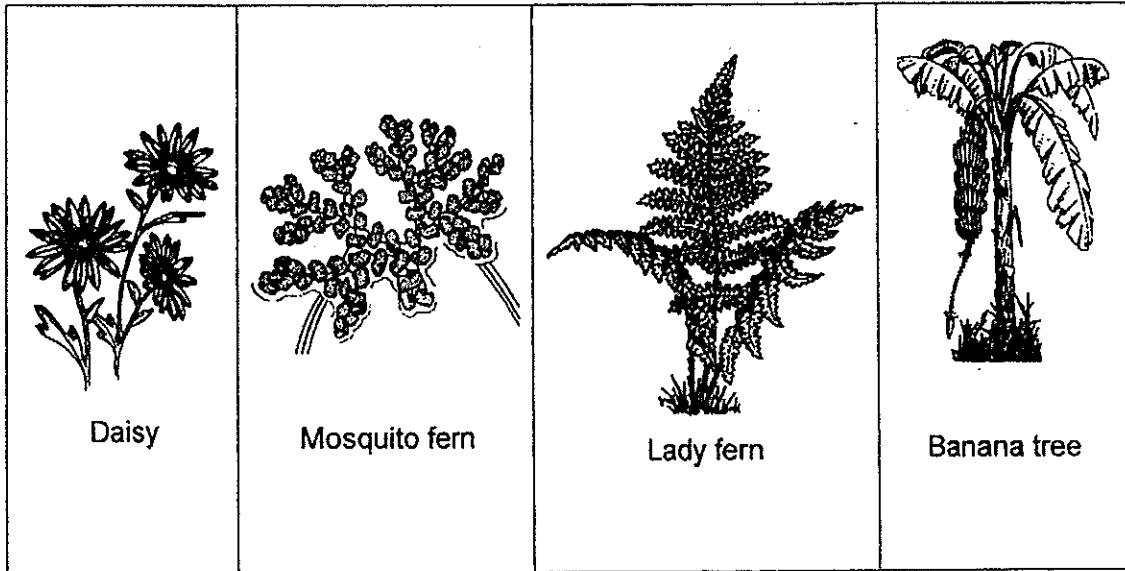


Based on the classification chart above, name two characteristics of Animal A. [2]

Characteristic 1	
Characteristic 2	

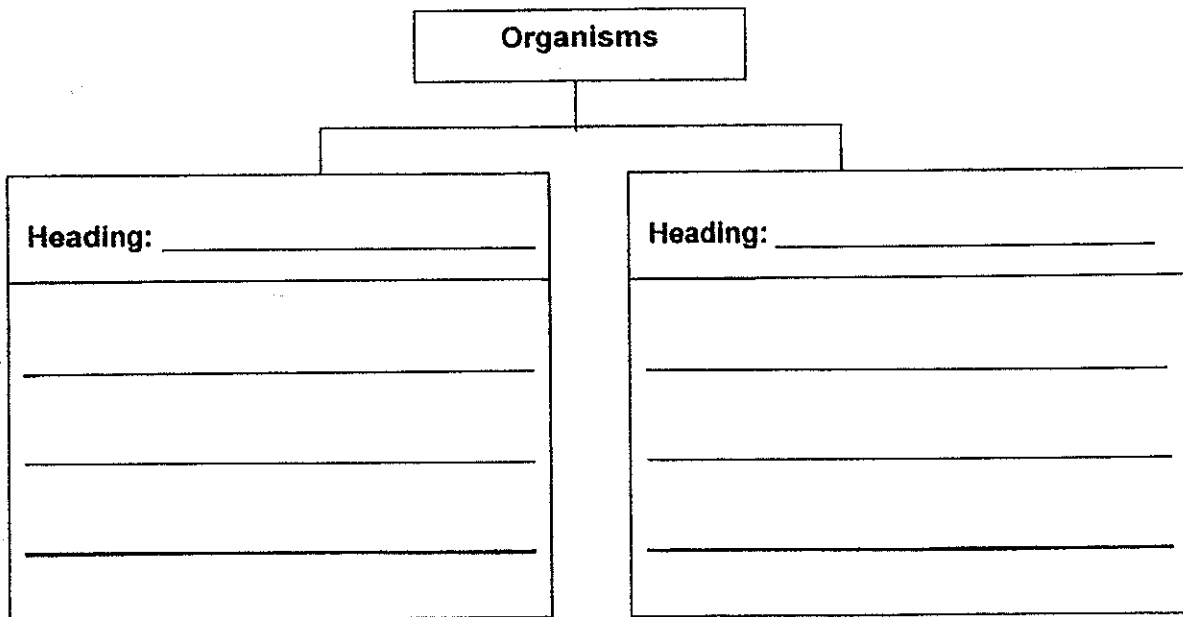
Score	2
-------	---

23. The diagram below shows 4 organisms. (not drawn to scale)



In the classification table below:

- (a) **classify** the 4 organisms correctly into 2 groups and
- (b) **write suitable headings** for each group. [2]

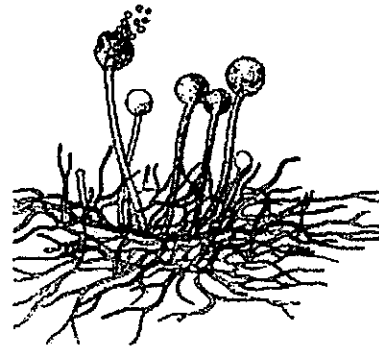


Score	2
-------	---

24. The pictures below show a bird's nest fern and bread mould. (not drawn to scale)



Bird's nest fern



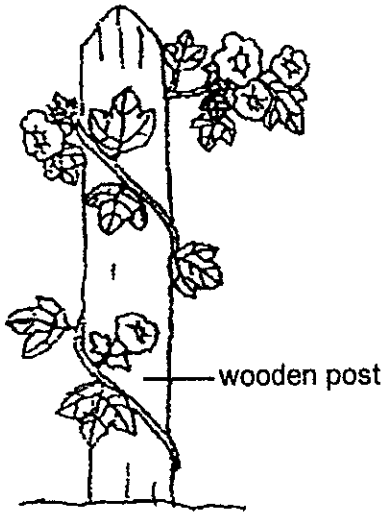
Bread mould

(a) State one similarity between the characteristics of the bird's nest fern and the bread mould. [1]

(b) How are they different in the way they obtain their food? [1]

Score	2
-------	---

25. The diagrams below show Plant G and Plant H.



Plant G



Plant H

Based on the information shown in the diagrams above, state one similarity and one difference between Plant G and Plant H.

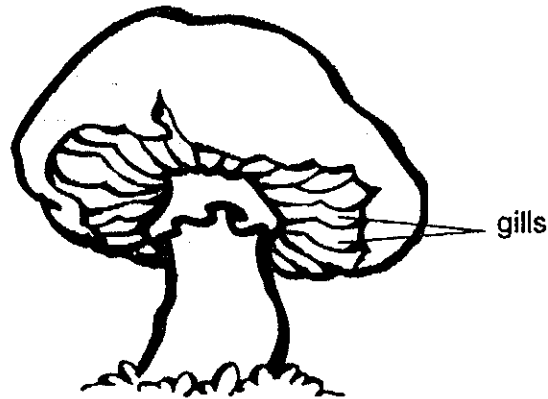
(Do not compare their shape, size or colour)

[2]

Similarity	<hr/> <hr/>
Difference	<hr/> <hr/>

Score	2
-------	---

26. The diagram below shows Organism P.



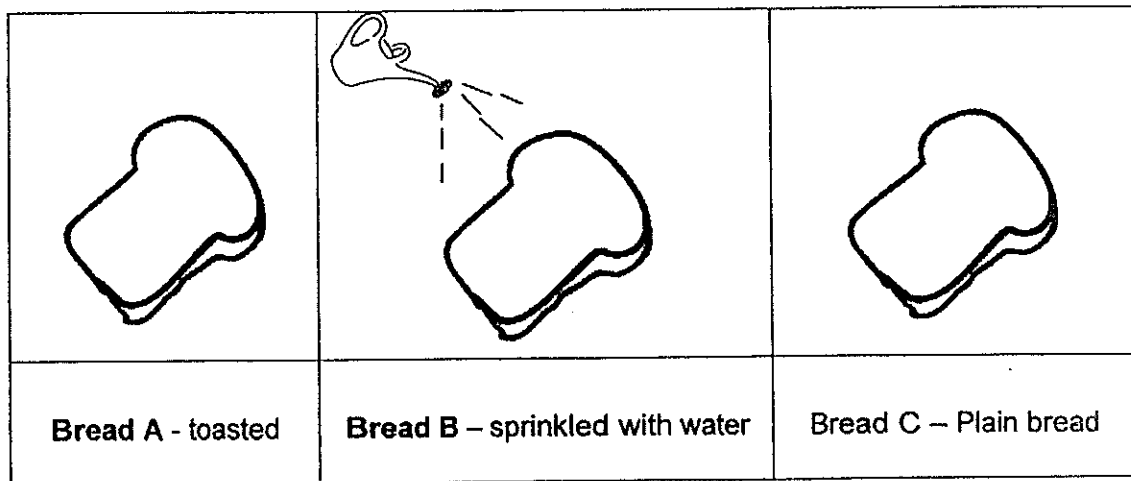
(a) Name the substance that can be found in between the gills of Organism P. [1]

When the substance identified in your answer in (a) were scattered on the ground, it was observed that many of organisms P were found growing on the ground after one week.

(b) Give a reason for the observation made above. [1]

Score	2
-------	---

27. Jenny had three identical slices of bread, A, B and C. She toasted Bread A, sprinkled water on Bread B and left Bread C in the original state. Then she put Bread A, B and C, in a warm, dark corner for 5 days.



She recorded her observations in the table below.

Day	Bread A	Bread B	Bread C
1	No change	No change	No change
3	No change	No change	No change
4	No change	A few dark spots on the bread	No change
5	No change	More dark spots on the bread	A few dark spots on the bread

- (a) These dark spots belong to a group of organisms called fungi.

Name these dark spots.

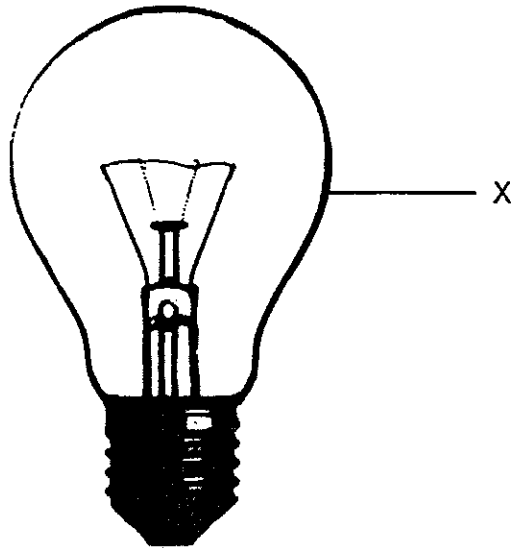
[1]

- (b) Based on the Jenny's observations, what condition would help to increase the growth of the dark spots?

[1]

Score	2
-------	---

28. The diagram below shows a bulb.



(a) Suggest a material that is most suitable to make part X of the bulb. [1]

(b) Give a reason for your answer in (a). [1]

Score	2
-------	---

29. The table below shows properties of materials P, Q, R and S.

Materials Properties	Material P	Material Q	Material R	Material S
Breaks easily			✓	
Flexible		✓		✓
Able to see through			✓	
Waterproof	✓	✓	✓	

Based on the information in the table above, which material is most suitable to be chosen to make a raincoat?

Give a reason for your answer.

[2]

Material	_____
Reason	_____ _____ _____ _____

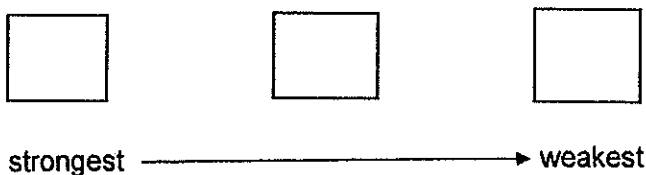
Score	2
-------	---

30. Danny used three different materials, X, Y and Z, to make into 3 bags of the same size. In each bag, he added identical cans of drinks one at a time until the bag started to break.

He then recorded the minimum number of cans needed to break each bag in the table as shown below.

Material	Minimum number of cans added until the bag started to break
X	10
Y	25
Z	17

- (a) Arrange the materials, X, Y, Z, in descending order starting with the strongest material. [1]



- (b) Which material, X, Y, Z, is most suitable for making a shopping bag. Give a reason for your answer. [1]

Year: 2014

Level: Primary 3

School: Raffles Girls' Primary School

Subject: SCIENCE

Semester: SA1

Q1	Q2	Q3	Q4	Q5	Q6	Q7	Q8	Q9	Q10
3	1	4	2	2	4	3	3	3	1
Q11	Q12	Q13	Q14	Q15	Q16	Q17	Q18		
3	3	2	2	1	3	1	2		

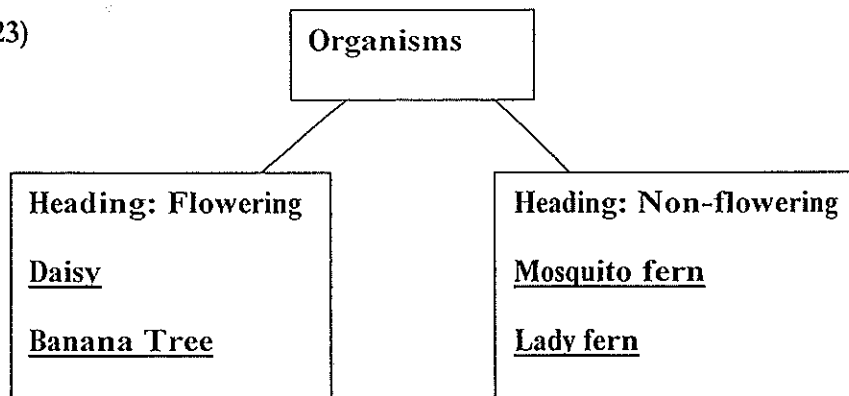
Q19) False, True, False, False

Q20) a) Animal C is not an insect as it does not have three body parts and six legs.

Q21) Container Y. The flies in container A do not have air.

Q22) characteristic 1: can fly characteristic 2: does not lay eggs

Q23)



Q24) a) Bird's nest and bread mould reproduce by spores.

b) Bird's nest fern makes its own food while bread mould gets its food from the bread that it's growing on.

Q25) Similarity: Both grow on land.

Difference: Plant G needs support to grow on but plant H does not need support to grow on.

Q26) a) The substance is spores.

b) Organism P reproduces by spores so when the spores were scattered on the ground, many of organism P was growing after one week.

Q27) a) These dark spots are bread mould.

b) The bread needs to be put in a warm place and water has to be put on the bread.

Q28) a) The material most suitable to make part X is glass.

b) Glass is hard and transparent.

Q29) Material: Material Q Reason: Material Q is flexible and waterproof.

Q30) a) Y, Z, X

b) Material Y. It can hold the most number of cans before it starts to break so it is the strongest material.