



Anglo-Chinese School (Primary)

MID-YEAR EXAMINATION 2016  
SCIENCE  
PRIMARY THREE  
(BOOKLET A)

Name: \_\_\_\_\_ ( )

Class: Primary 3 \_\_\_\_\_

Date: 4 May 2016

Duration of paper: 1 h 15 min

\_\_\_\_\_  
Parent's/Guardian's signature

**INSTRUCTION TO CANDIDATES**

1. This question paper consists of **11** printed pages including this cover page.
2. Do not turn over this page until you are told to do so.
3. Follow all instructions carefully.
4. Answer all questions.
5. Shade your answer on the Optical Answer Sheet (OAS) provided.

For each of the following questions from 1 to 15, four options are given. One of them is the correct answer. Make your choice (1, 2, 3 or 4). Shade the correct oval (1, 2, 3 or 4) on the Optical Answer Sheet. [30 marks]

- 1 The classification table below shows how some things have been grouped.

Group A	Group B	Group C	Group D
Footballs	Flute	Bowls	Chairs
Tennis balls	Piano	Spoons	Desks
Basketballs	Drums	Forks	Stools

In which group can a recorder be placed?

- (1) Group A  
 (2) Group B  
 (3) Group C  
 (4) Group D
- 2 What must living things do to ensure the continuity of their own kind?
- (1) They must find more food.  
 (2) They must change their diet.  
 (3) They must continue to reproduce.  
 (4) They must move to a new place with more space.

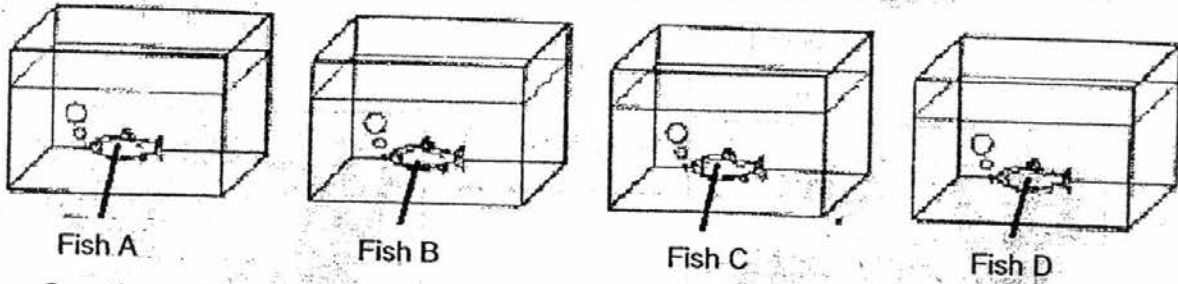
- 3 Rajah classified some objects into Group X and Group Y as shown below.

Group X	Group Y
Wooden chopsticks	Rubber hose
Glass window	Plastic ruler
Brick	Plastic straw

Which one of the following properties is used to classify the objects?

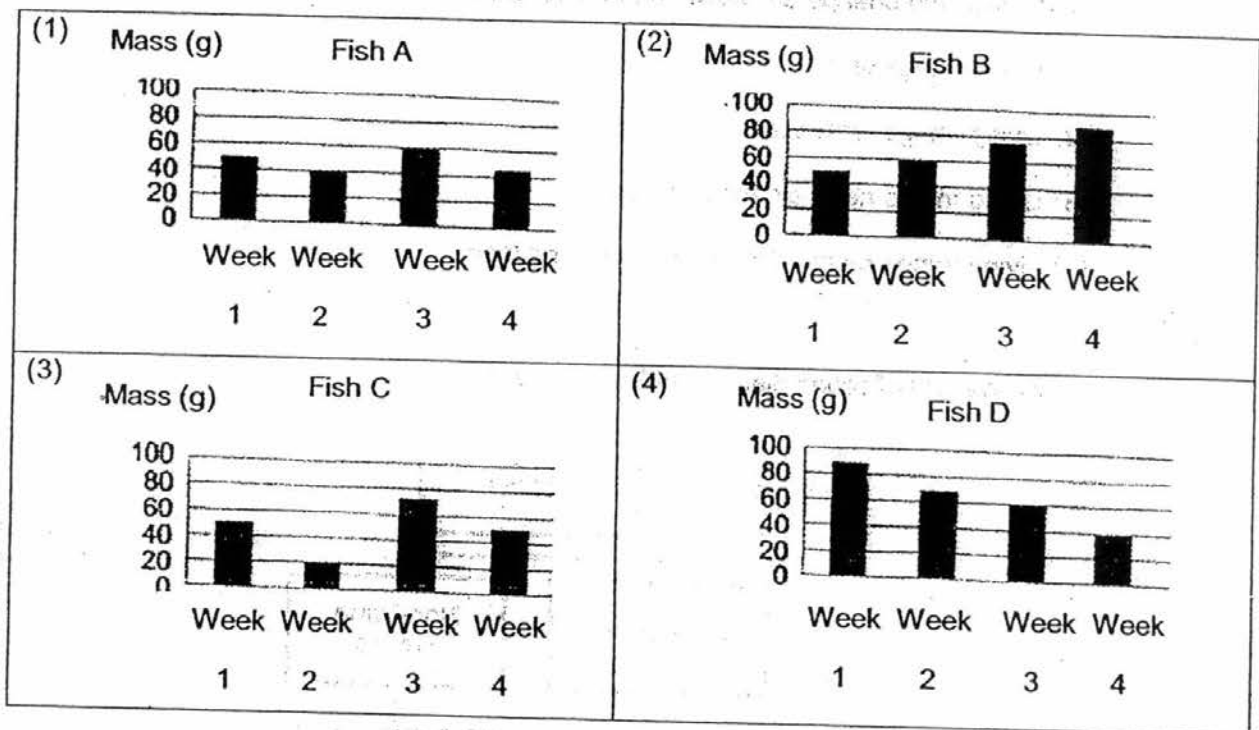
- (1) Flexibility  
 (2) Transparency  
 (3) Ability to absorb water  
 (4) Ability to float on water

- 4 Jolene placed a fish into each tank of water as shown in the diagram below. The fish were of the same size and type, and given the same amount of food daily.



Over the next four weeks, Jolene recorded the mass of the four fish. Using the data collected, she then plotted four different graphs, (1), (2), (3) and (4), for each fish.

Which fish was most likely to have been given the right type of food?



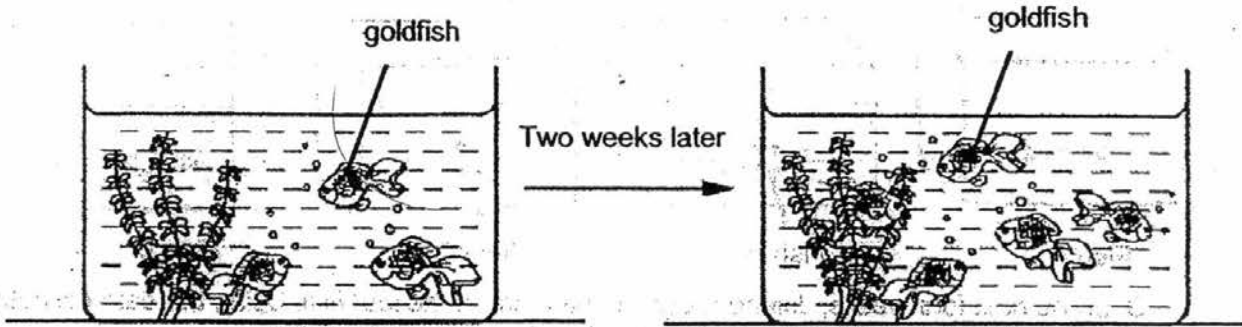
- 5 Samuel made some observations about a living thing. His observations are shown below.

- It reproduces from spores.
- It does not make its own food.
- It needs air, water and food to survive.

Samuel is likely to have observed a/an \_\_\_\_\_.

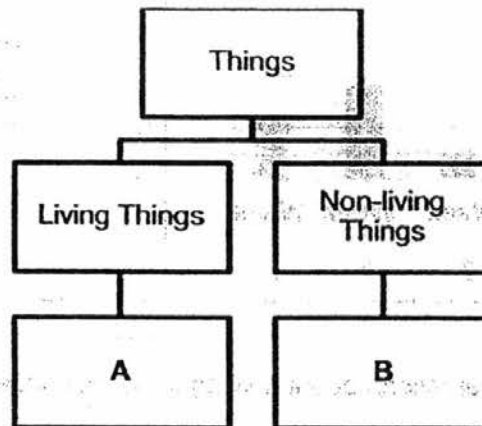
- (1) Fern
- (2) Tree
- (3) Mushroom
- (4) Hibiscus plant

- 6 Some goldfish were placed in a tank. Two weeks later, a change was observed in the tank as shown in the diagram below.



What does the change as shown in the diagram above tell us about living things?

- (1) Living things grow.
  - (2) Living things reproduce.
  - (3) Living things need air, food and water.
  - (4) Living things respond to changes around them.
- 7 Study the classification diagram below carefully.

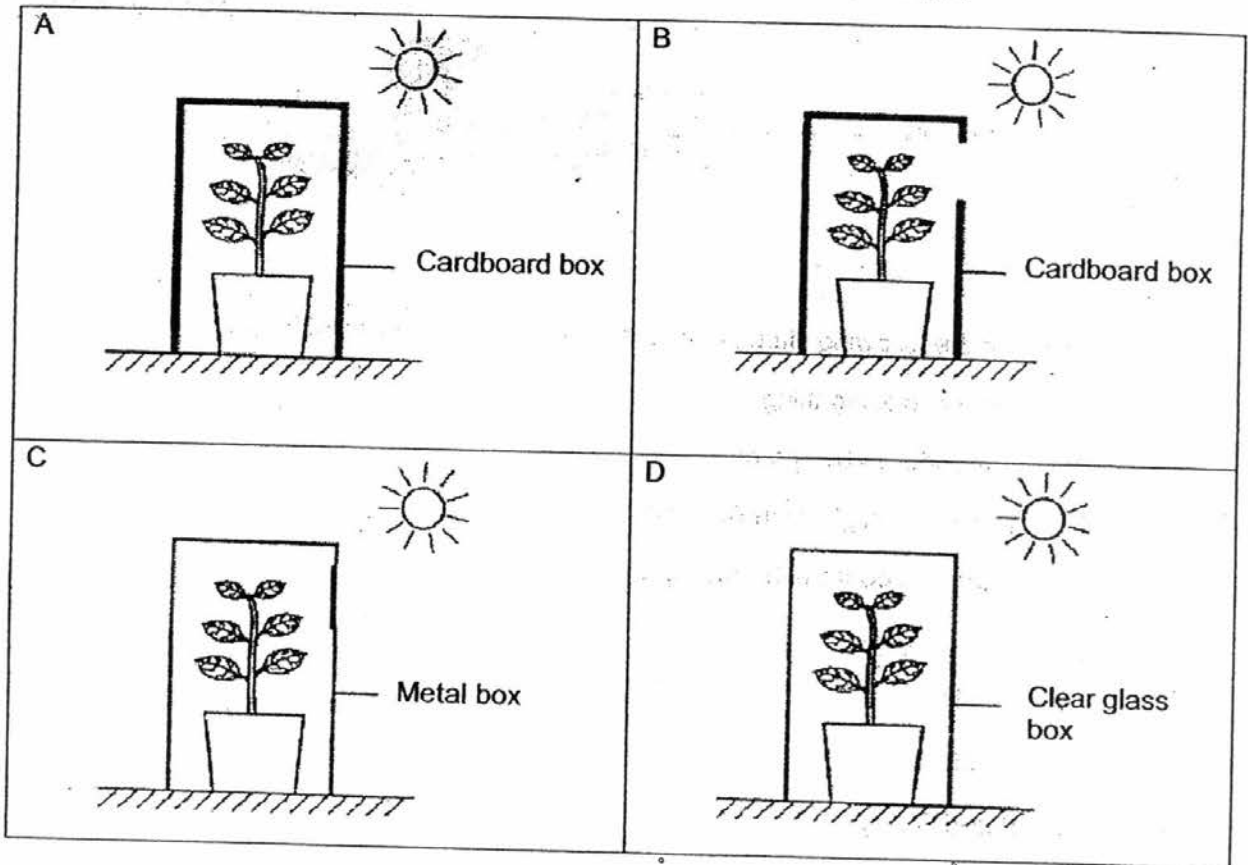


Which one of the following best represents A and B?

	A	B
(1)	Mushroom	Butterfly
(2)	Doll	Mushroom
(3)	Doll	Balloon
(4)	Mushroom	Balloon

(Go on to the next page)

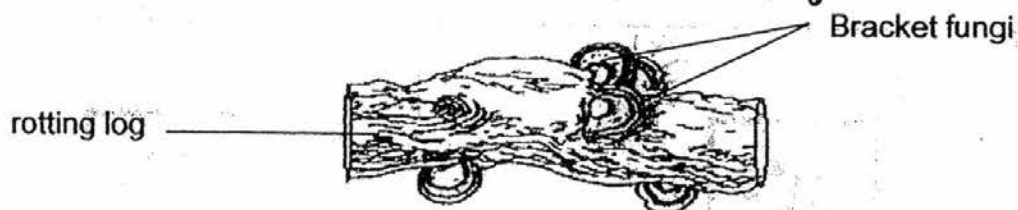
8 Which set-up below can be used to find out if plants grow towards sunlight?



- (1) A
- (2) B
- (3) C
- (4) D

(Go on to the next page)

- 9 The picture below shows some Bracket fungi growing on a rotting log.



Which of the following statements is/are true about the Bracket fungi?

- A It is a non-living thing.
- B It reproduces by spores.
- C It needs sunlight to make food.
- D It gets its food from the rotting log.

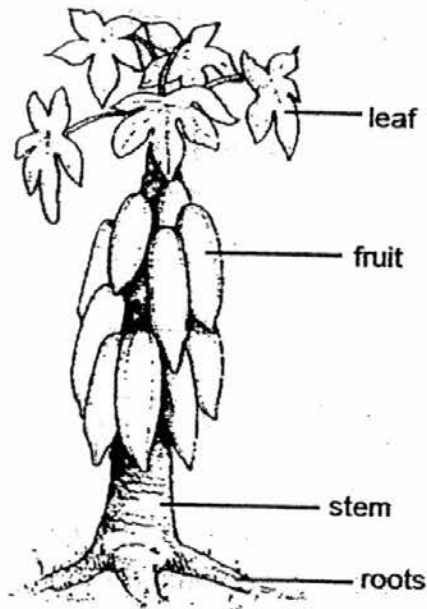
- (1) A only
- (2) C only
- (3) B and C only
- (4) B and D only

- 10 Which of the following statement(s) is/are true for all insects?

- A They have six legs.
- B They have three body parts.
- C They have hair on their body.
- D They reproduce by giving birth to their young.

- (1) A only
- (2) A and B only
- (3) B and C only
- (4) A, B and D only

- 11 The diagram below shows a plant and its parts.



Based on the diagram above, which one of the following statements is correct?

- (1) The plant has a weak stem.
- (2) The plant is a flowering plant.
- (3) The plant is a non-flowering plant.
- (4) The plant reproduces through spores.

12 The table below shows the characteristics of two groups of animals, P and Q.

A tick (✓) indicates that the animals have the described characteristics shown in the table.

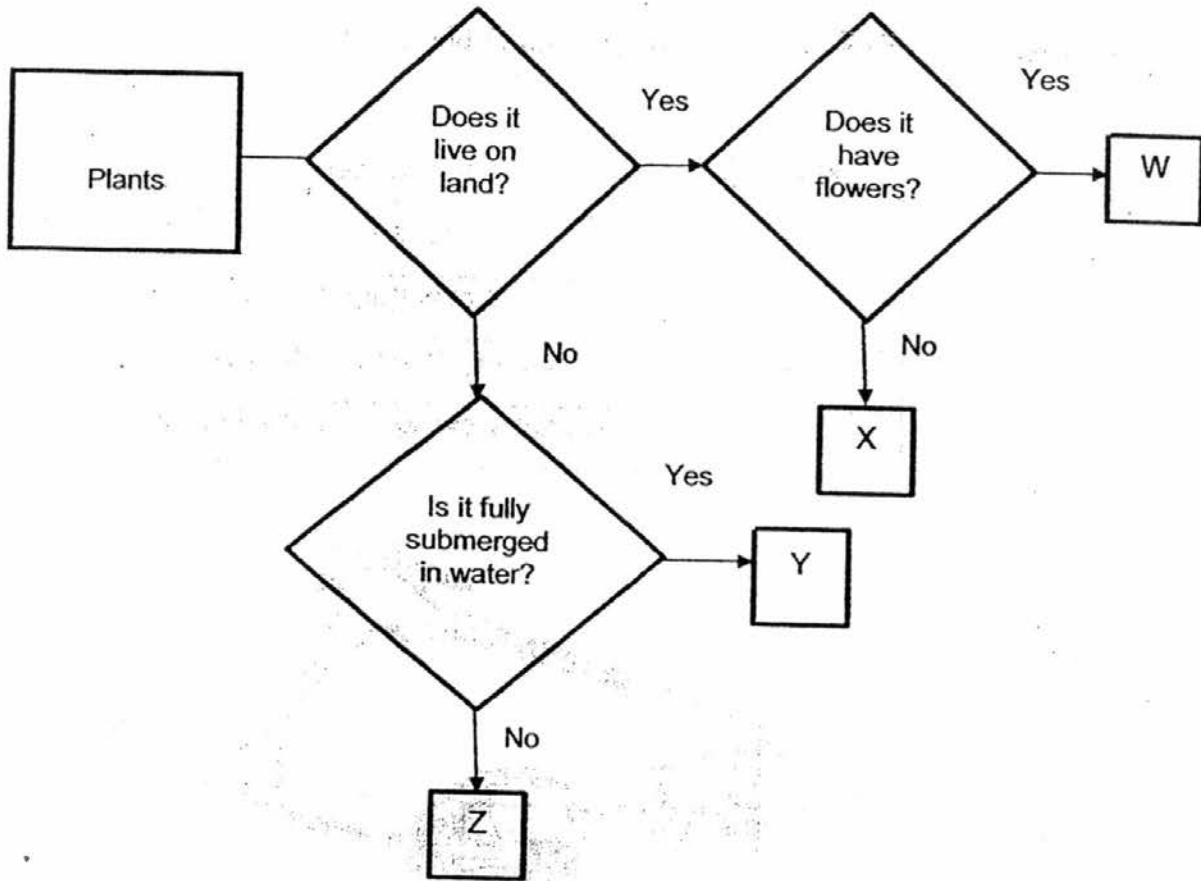
Characteristics	Group P	Group Q
Have moist skin		✓
Have hair on its body	✓	
Live on land and in water		✓
Produce milk to feed their young	✓	

Which one of the following best represents Groups P and Q?

	Group P	Group Q
(1)	Mammals	Reptiles
(2)	Birds	Amphibians
(3)	Mammals	Amphibians
(4)	Amphibians	Fish



13 Study the flowchart below carefully.



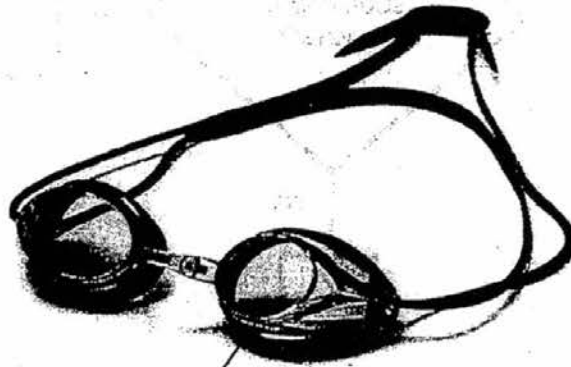
Cattail is a plant that grows in water. A part of the plant is in water while the rest of the plant is out of the water.

Based on the flowchart above, which one of the following best represents the cattail plant?

- (1) W
- (2) X
- (3) Y
- (4) Z

- 14 Based on the properties provided in the table below, which material is most suitable for making part X of the swimming goggles shown below?

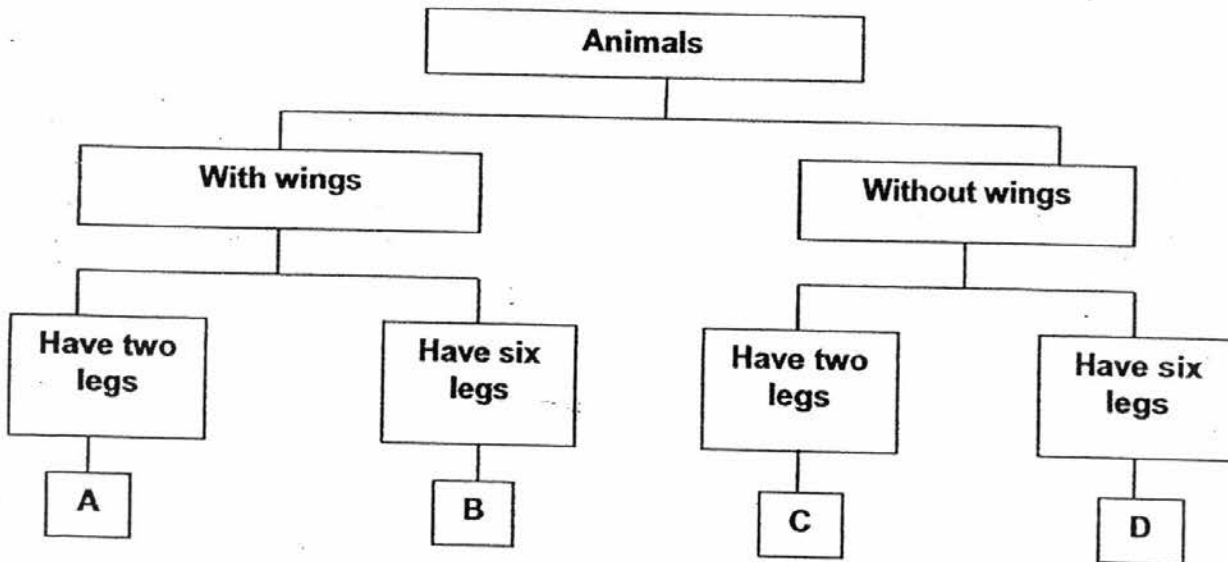
Material	Properties
A	Breaks easily
B	Not waterproof
C	Allows light to pass through
D	Does not allow light to pass through



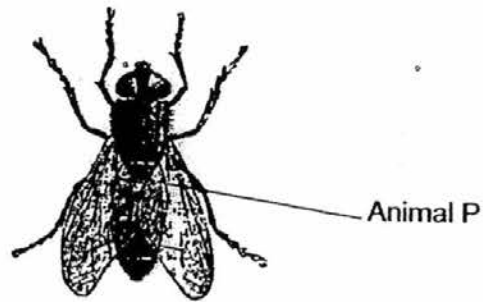
- (1) A  
(2) B  
(3) C  
(4) D

Part X

- 15 Sam classified four animals using a classification diagram as shown below.



In which group in the classification diagram does Animal P belong to?



- (1) A
- (2) B
- (3) C
- (4) D

Faint, illegible text at the top of the page.

A large block of very faint and illegible text, possibly a list or a set of instructions, occupying the upper middle portion of the page.



A small, faint mark or stamp, possibly a signature or a date, located to the right of the central smudge.

Faint text at the bottom of the page, possibly a footer or a page number.



Anglo-Chinese School (Primary)

MID-YEAR EXAMINATION 2016  
SCIENCE  
PRIMARY THREE  
BOOKLET B

Name: \_\_\_\_\_ ( )

Class: Primary 3 \_\_\_\_\_

Date : 4 May 2016

Duration of paper: 1 h 15 min

\_\_\_\_\_  
Parent's/Guardian's signature



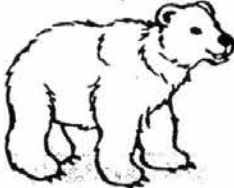

**INSTRUCTION TO CANDIDATES**

1. This question paper consists of 9 printed pages including this cover page.
2. Do not turn over this page until you are told to do so.
3. Follow all instructions carefully.
4. Answer all questions.
5. Write your answers in this booklet.

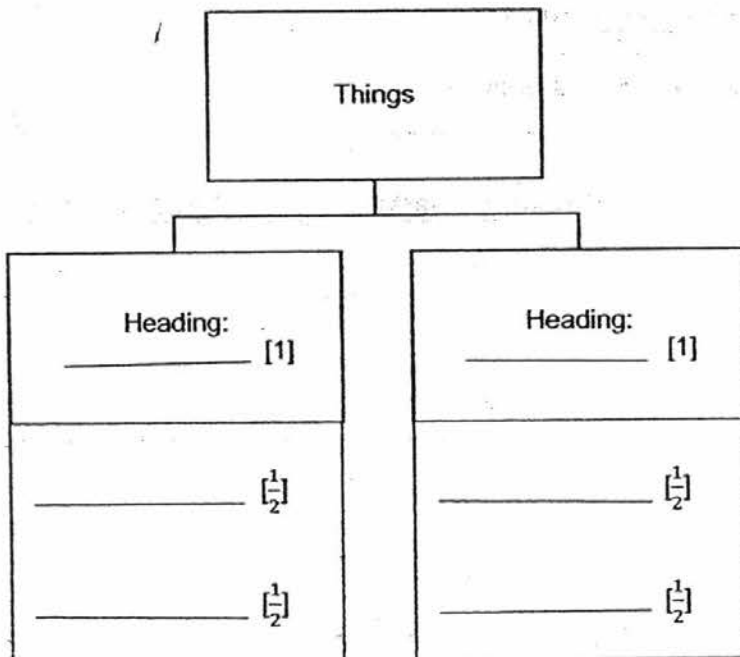
Booklet	Maximum marks	Marks obtained
A	30	
B	20	
Total	50	

For questions 16 to 22, write your answers in the spaces provided in this booklet. The number of marks available is shown in the brackets [ ] at the end of each question or part question. (20 marks)

16 Some things have been classified into two groups as shown in the classification table below.

Things	
Living Things	Non-living Things
 Butterfly	 Aeroplane
 Bear	 Duster

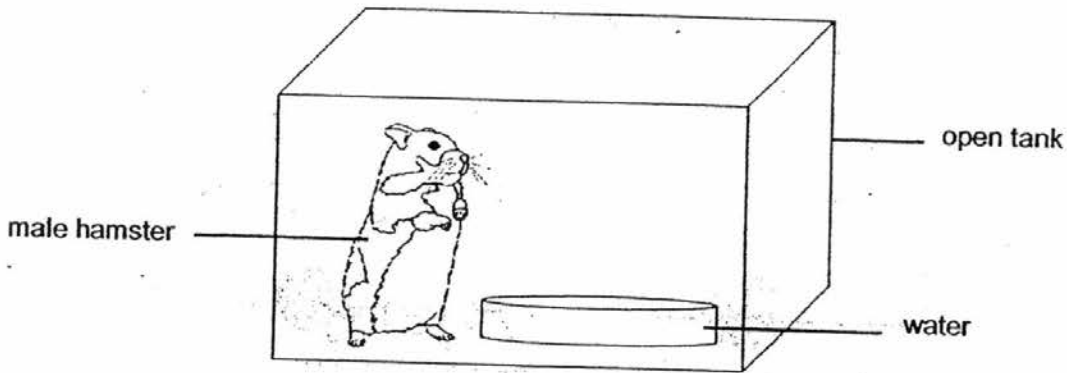
Classify the same things in a **different** way using the classification diagram provided below. Provide suitable headings for your classification diagram. [4]



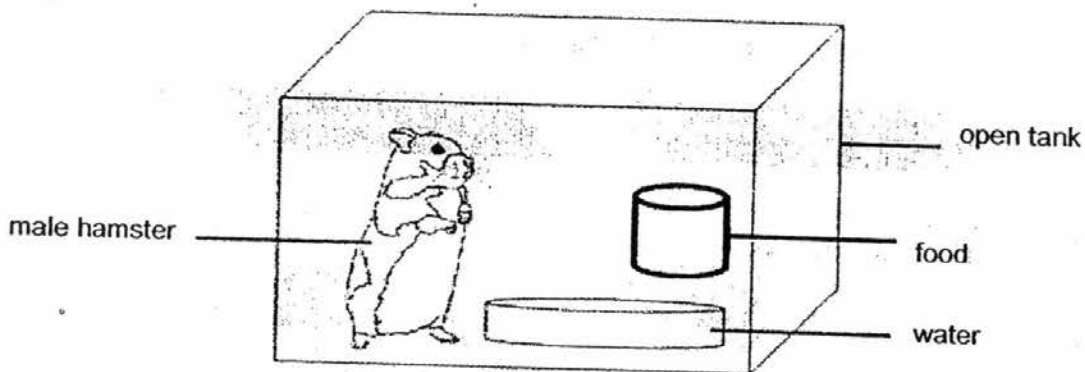
(Go on to the next page)

SCORE	4
-------	---

- 17 (a) The following diagram shows two set-ups.



Set-up A



Set-up B

During a rainy day, it was observed that the male hamster in set-up B shivered.

- (i) State the characteristic of living things that was observed in the situation above. [1]

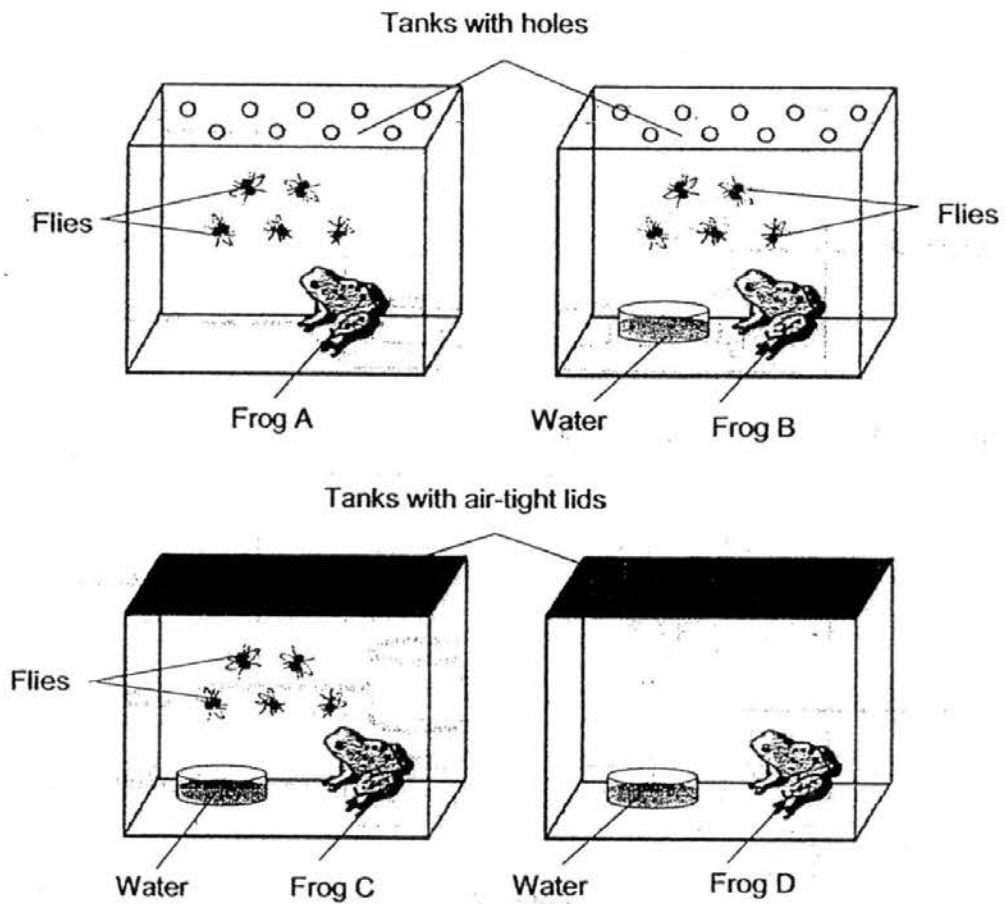
A female hamster was added to set-up B. After some time, the female hamster gave birth to some pups (baby hamsters).

- (ii) State the characteristic of living things that was described in the situation above. [1]

(Go on to the next page)

SCORE	/
	2

17 (b) Freddy conducted an experiment using four set-ups as shown below.



Based on the set-ups shown above, which frog will live the longest? Explain your answer. [1]

---



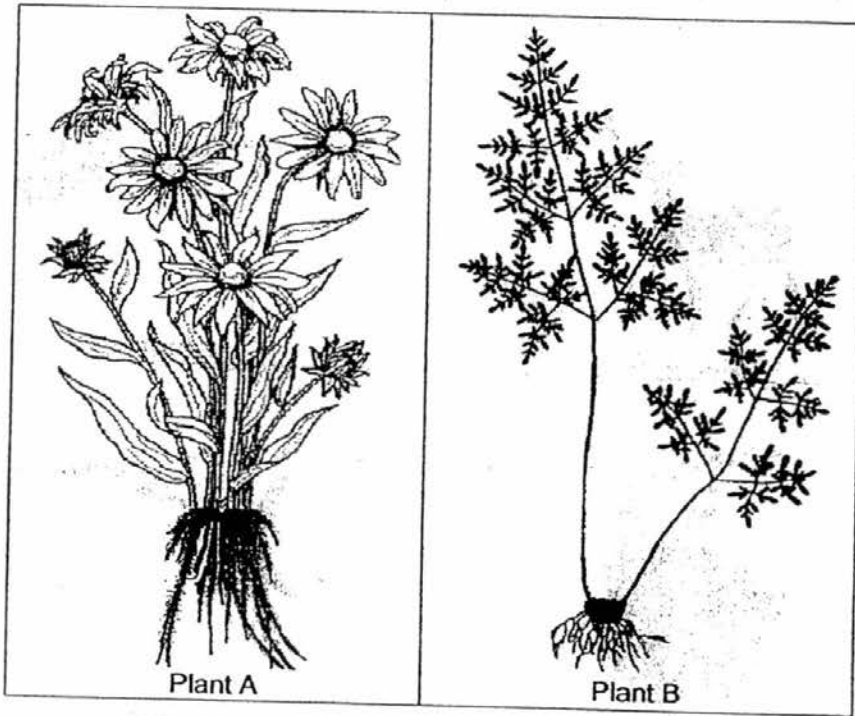
---

(Go on to the next page)

SCORE.	1
--------	---



18 Study the diagram given below carefully.



(a) Based on the diagram, state two similarities between Plants A and B. [2]

(i) \_\_\_\_\_

\_\_\_\_\_

(ii) \_\_\_\_\_

\_\_\_\_\_

(b) Based on the diagram, state two differences between Plants A and B. [2]

(iii) \_\_\_\_\_

\_\_\_\_\_

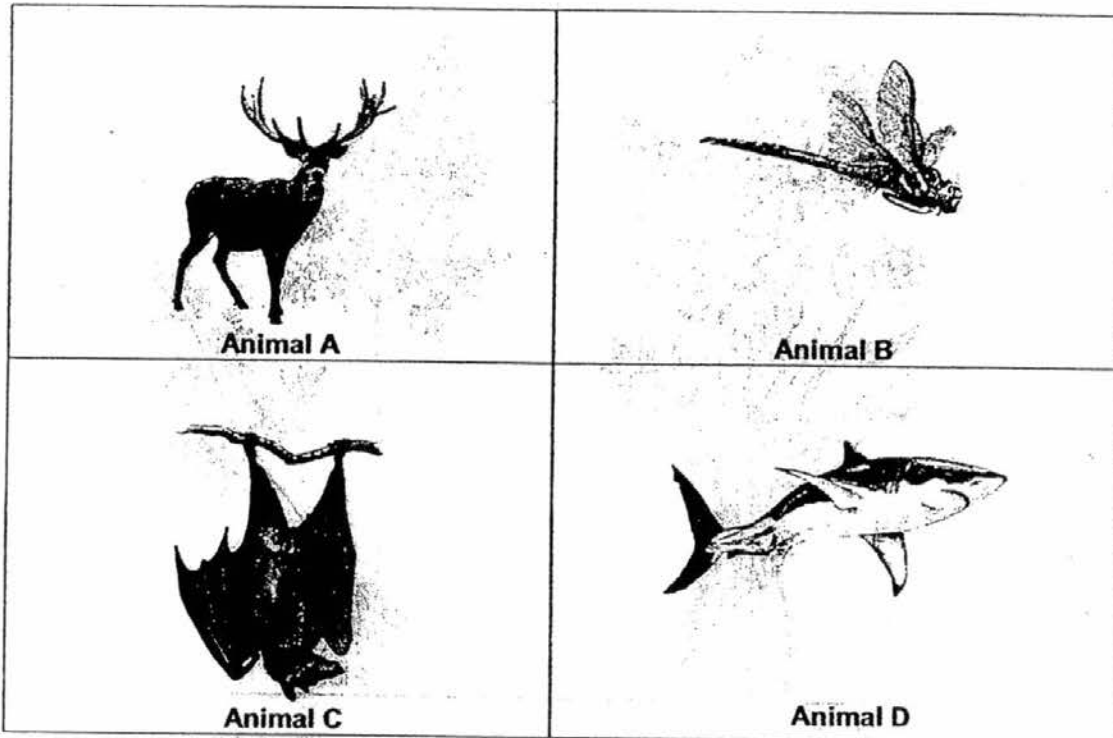
(iv) \_\_\_\_\_

\_\_\_\_\_

(Go on to the next page)

SCORE	
	4

- 19 The diagrams below show four different animals, A, B, C and D.



- (a) Based on diagrams above, write "A, B, C and D" under the correct headings below.

[1]

Can fly	Cannot fly

- (b) Which part of their bodies helps these animals to fly?

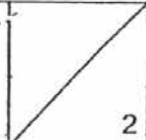
[1]

---

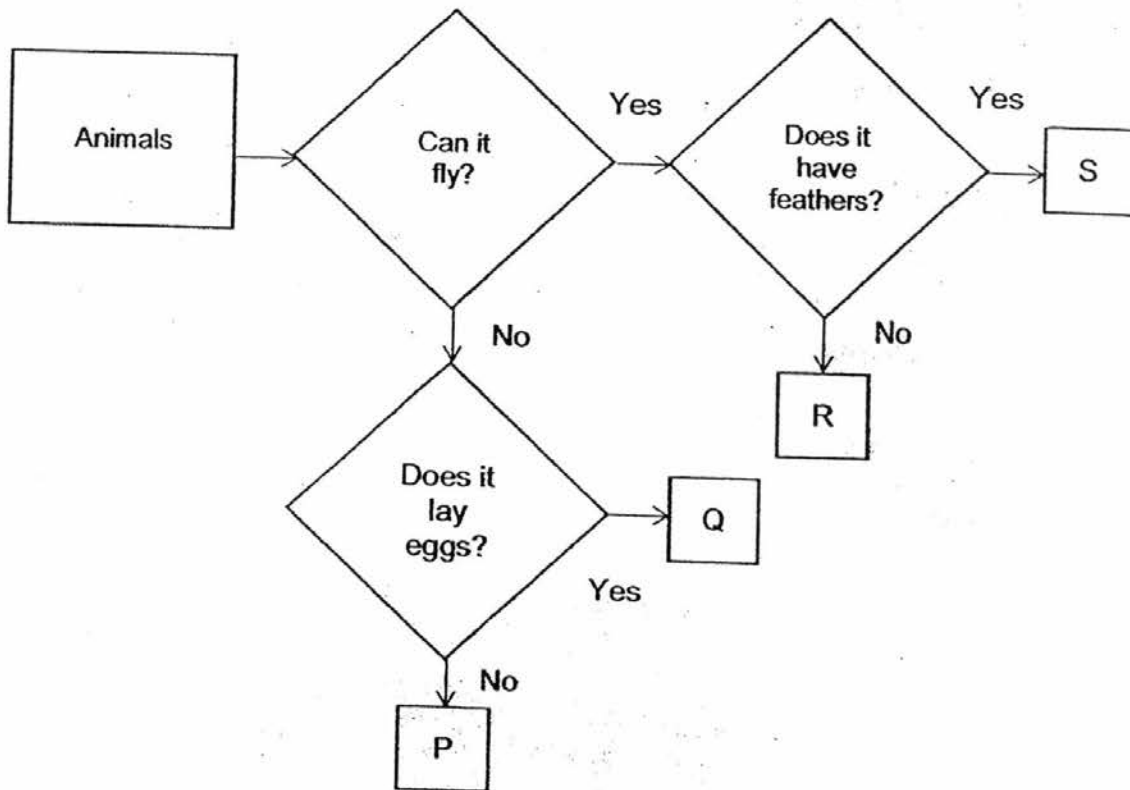


---

(Go on to the next page)

SCORE	
-------	---

20. Study the flowchart below carefully.



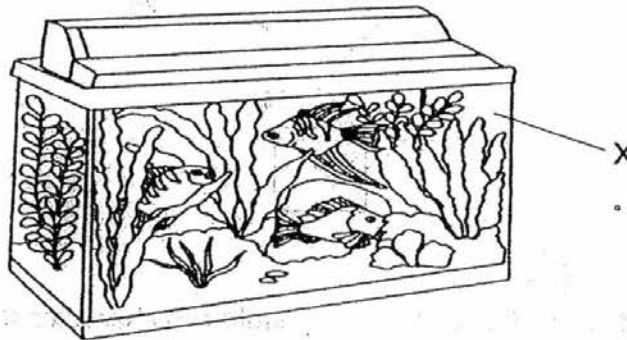
- (a) Based on the flowchart above, state two characteristics of Animal S. [1]
- 
- (b) Based on the flowchart above, state two characteristics of Animal Q. [1]
- 

(Go on to the next page)

SCORE	
	2

- 21 Si Min conducted an experiment using materials A, B and C. She recorded her results in the table shown below.

Material \ Property	A	B	C
Is it strong?	Yes	Yes	No
Is it waterproof?	Yes	Yes	Yes
Does it allow light to pass through it?	No	Yes	Yes

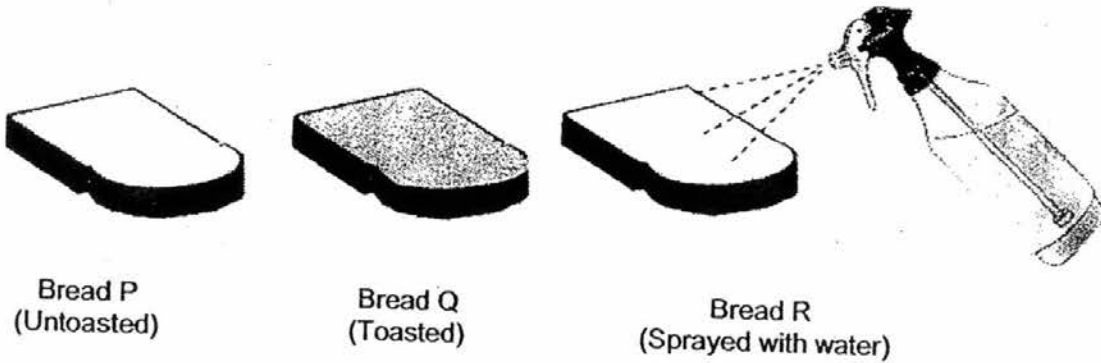


- (a) Which material A, B or C is most suitable to make part X of the fish tank? [1]
- 
- (b) Explain your answer to part (a). [1]
- 
- 
- (c) Based on the table above, state one difference between materials A and C. [1]
- 
- 

(Go on to the next page)

SCORE	3
-------	---

- 22 Yani carried out an experiment using three identical slices of bread, P, Q and R as shown in the diagram below.



Bread P  
(Untoasted)

Bread Q  
(Toasted)

Bread R  
(Sprayed with water)

She recorded her observations over seven days in the table below.

Day	Bread P	Bread Q	Bread R
1	No change	No change	No change
3	No change	No change	No change
5	No change	No change	No change
7	A few dark spots	No change	Many dark spots

- (a) What were the dark spots which Yani observed in the experiment?

[1]

---

- (b) Explain why dark spots were not observed on Bread Q at the end of the experiment.

[1]

---



---

END OF BOOKLET B/ End of Paper  
Please check all your answers carefully.

SCORE	
	2



YEAR : 2016  
 LEVEL : PRIMARY 3  
 SCHOOL : ANGLO-CHINESE  
 SUBJECT : SCIENCE  
 TERM : SA1

Booklet A

Q1	Q2	Q3	Q4	Q5	Q6	Q7	Q8
2	3	1	2	3	2	4	2
Q9	Q10	Q11	Q12	Q13	Q14	Q15	
4	2	2	3	4	3	2	

Booklet B

Q16

Heading: <u>Can fly</u> [1]
<u>Butterfly</u> [ $\frac{1}{2}$ ]
<u>Aeroplane</u> [ $\frac{1}{2}$ ]

Heading: <u>Cannot fly</u> [1]
<u>Bear</u> [ $\frac{1}{2}$ ]
<u>Duster</u> [ $\frac{1}{2}$ ]

- Q17
- (a) (i) Living thing respond to changes.  
 (ii) Living thing reproduce.
- (b) Frog B, all living thing need food, air and water.

- Q18
- (a) (i) Both plants have roots.  
 (ii) Both plants have stem.
- (b) (iii) Plant A is a flowering plant but plant B is not a flowering plant.  
 (iv) Plant B only have two stem but plant A has more than two stem.





Q19

(a)

Can fly	Cannot fly
Animal B Animal C	Animal A Animal D

(b) Their wings.

Q20

(a) Animal S can fly and have feathers.

(b) Animal Q cannot fly but can lay eggs.

Q21

(a) Material B is most suitable to make part X.

(b) Material B is strong, waterproof and it allow light to pass through it.

(c) Material A is strong but material C is not.

Q22

(a) Mould

(b) Bread Q is dry and mould need water to grow.

End

