

**Pei Chun Public School
Semestral Assessment 2 - 2008
Science
Primary 3**

Name : _____ () Date : 24th October 2008

Class : Pri. 3 ()

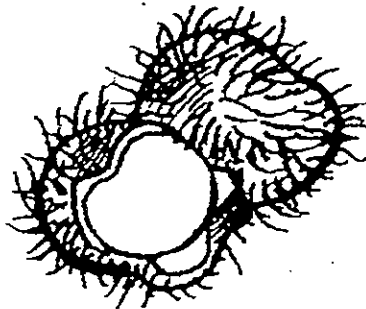
Science Teacher : _____ Time : 1h 30 min

Section A (25 × 2 marks)

For questions 1 to 25, choose the most suitable answer and shade its number (1, 2, 3 or 4) on the Optical Answer Sheet (OAS) provided.

1. The classification table below shows how some fruits (A, B, C and D) are grouped.

	One seed	More than one seed
Have hair	A	B
Have thorns	C	D



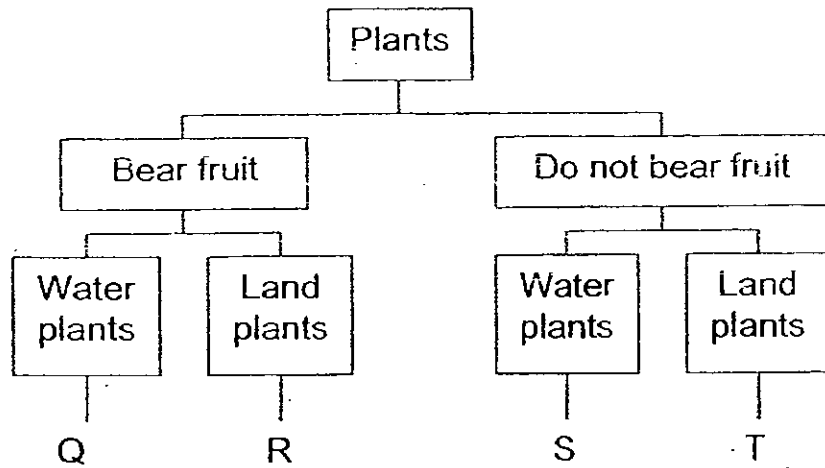
rambutan

Which letter is likely to represent a rambutan?

- (1) A
- (2) B
- (3) C
- (4) D

()

2. Study the classification diagram.



From the information above, which plant bears fruit and grows on land?

- (1) Q
 - (2) R
 - (3) S
 - (4) T
- ()

3. Ali grouped some animals into 3 different groups.

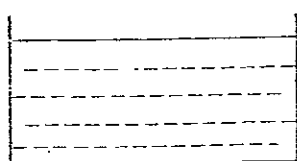
Group A	Group B	Group C
emu	dolphin	crab
chicken	monkey	prawn
sparrow	platypus	tortoise

Based on the table above, Ali grouped the animals according to

- (1) where they live.
 - (2) the way they move.
 - (3) the type of food they eat.
 - (4) the type of outer covering.
- ()

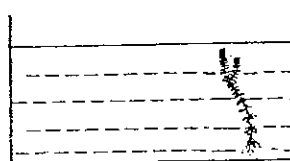
4. Raju wanted to do an experiment to show that living things need food. His teacher set up 4 water tanks, A, B, C and D as shown.

Tank A



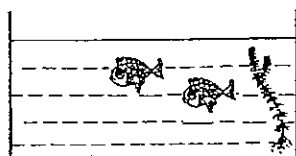
tap water only

Tank B



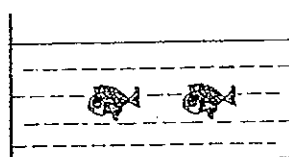
tap water and plant

Tank C



tap water, fishes and plant

Tank D



tap water and fishes

Which two of the tanks should she use in the experiment to show that living things need food?

- (1) A and B
- (2) B and C
- (3) C and D
- (4) A and D

()

5. Which of the following is true of all living things?

- (1) They curl up to protect themselves.
- (2) They can make their own food.
- (3) They change in size with time.
- (4) They eat other animals.

()

6. Study the diagrams below. Which of the following cannot move by itself?

1)



2)



3)

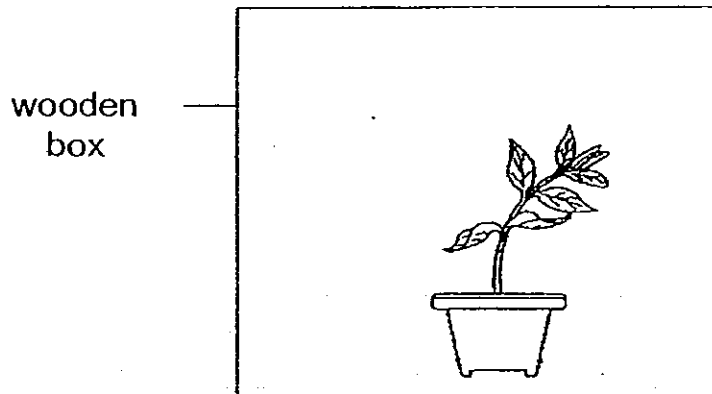


4)



()

7. Lisa placed a potted plant in a wooden box near a window. She watered it daily. After a few days, the plant grew towards the opening in the wooden box.

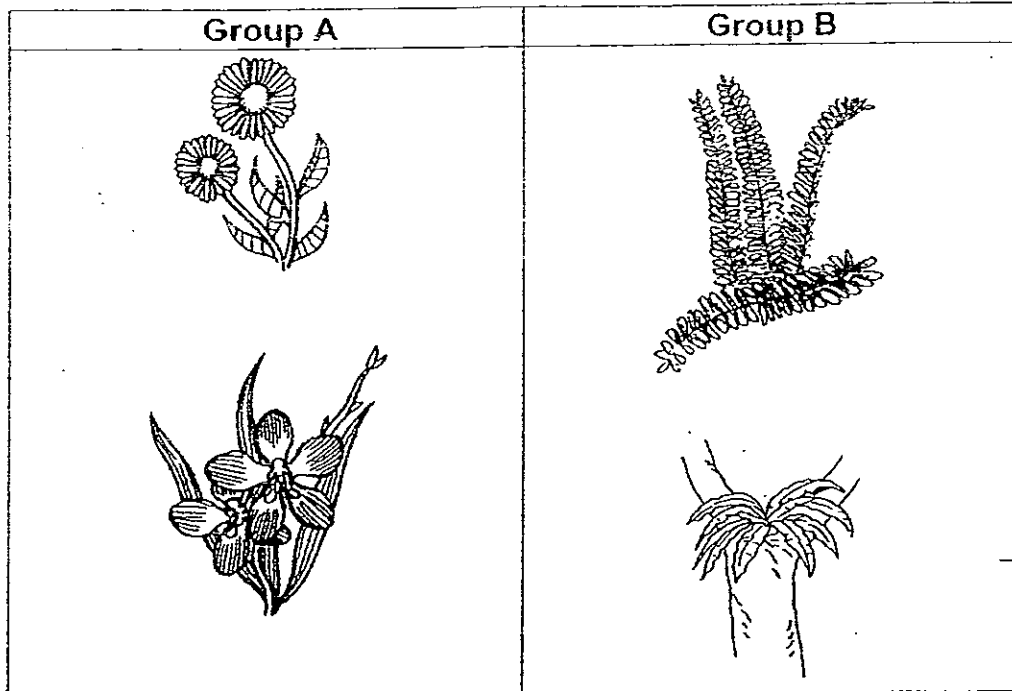


This shows that the plant _____.

- (1) dies
- (2) needs air
- (3) makes food
- (4) responds to its surrounding

()

8. Study the two groups of plants below.

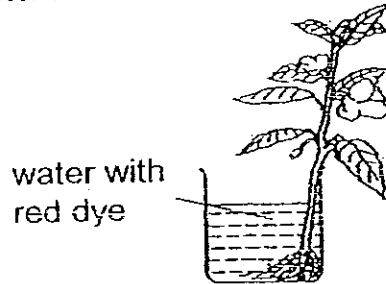


Which of the following are the correct headings for each group of plants?

	Group A	Group B
(1)	flowering plants	non-flowering plants
(2)	land plants	water plants
(3)	plants with thorns	plants without thorns
(4)	non-poisonous plants	poisonous plants

()

9. Huijuan placed a plant into a beaker of water. She put a few drops of red ink into the beaker of water. After a few days, she observed that the white flowers, stem and the veins of the leaves had turned red.

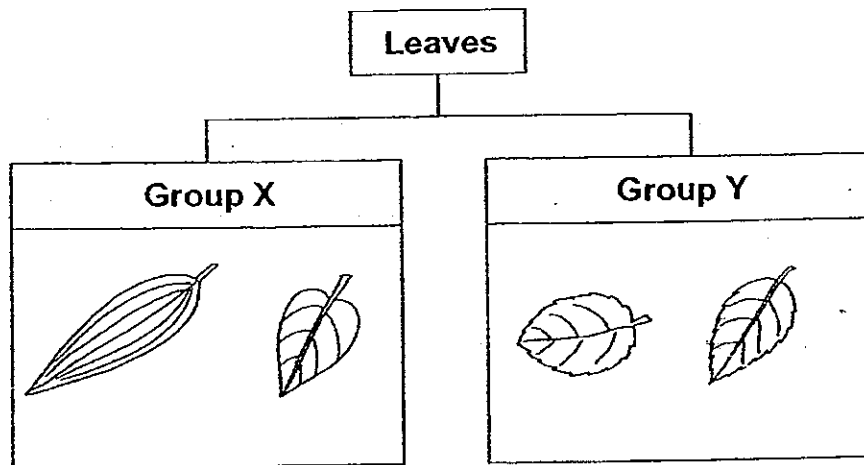


What did the observation show?

- (1) The stem carried water from the roots to the rest of the plant.
- (2) The stem carried food from the flowers to the rest of the plant.
- (3) The stem absorbed the water and transported it to the rest of the plant.
- (4) The flowers absorbed the water and transported it to the rest of the plant.

()

10. Study the classification chart below.

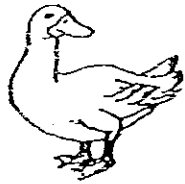


The leaves are classified according to their _____.

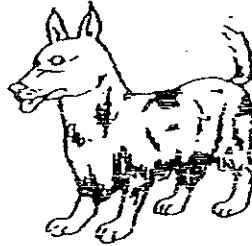
- (1) size
- (2) edge
- (3) shape
- (4) length

()

11. Study the two diagrams carefully.



duck



dog

Based on the diagrams, which of the statements are true?

- (A) The duck quacks while the dog barks.
- (B) The duck has two legs while the dog has four legs.
- (C) The duck has a beak while the dog does not have a beak.
- (D) The duck lives on land and water while the dog lives on land only.

- (1) A and D only
- (2) B and C only
- (3) A, B and C only
- (4) A, C and D only

()

12. Study the table below carefully.

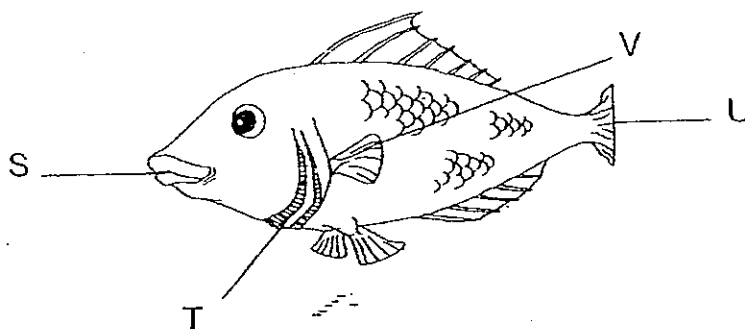
	Animals		
	P	Q	R
Is it a mammal?	No	Yes	Yes
Does it lay eggs?	Yes	Yes	No

Which of the animals in the table below correctly represent animals P, Q and R?

	P	Q	R
(1)	duck	dolphin	giraffe
(2)	dragonfly	spiny anteater	goat
(3)	frog	platypus	penguin
(4)	goldfish	ostrich	pig

()

13. The diagram below shows a fish.

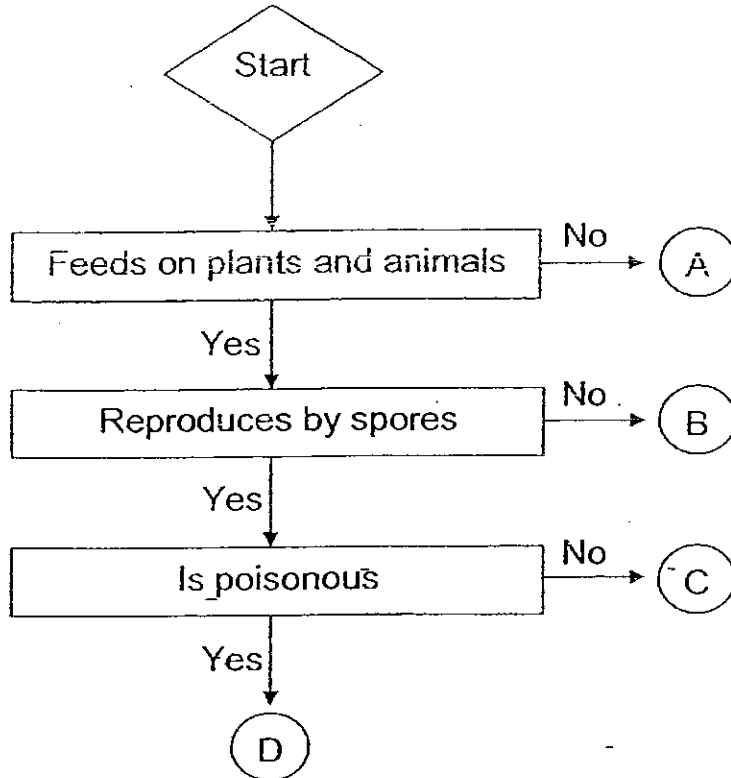


The table below describes the functions of the parts labelled S, T, U and V. Which part is incorrectly matched to its functions?

	Functions	Parts
(1)	The fish will be able to eat.	S
(2)	The fish will be able to breathe.	T
(3)	The fish will be able to swim.	U
(4)	The fish will be able to protect itself from harm.	V

()

14. Study the flow chart below.



Which of the following letters, A, B, C, or D, best represents the toadstool?

- (1) A
- (2) B
- (3) C
- (4) D

()

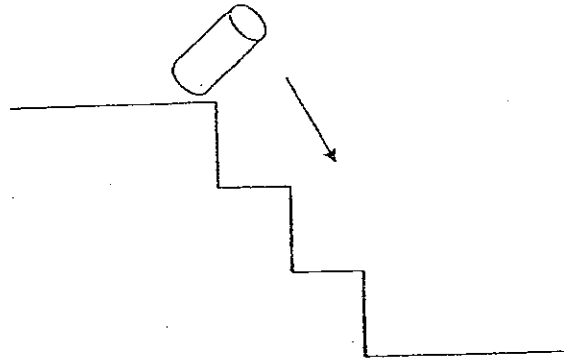
15. Which statements are false?

- (A) All micro-organisms are harmful.
- (B) Yeast can only be seen with a microscope.
- (C) Fungi depend on plants and animals for food.
- (D) Mould contains chlorophyll and can make its own food.

- (1) A and B only
- (2) B and C only
- (3) A and D only
- (4) C and D only

()

16. Look at the diagram below carefully.



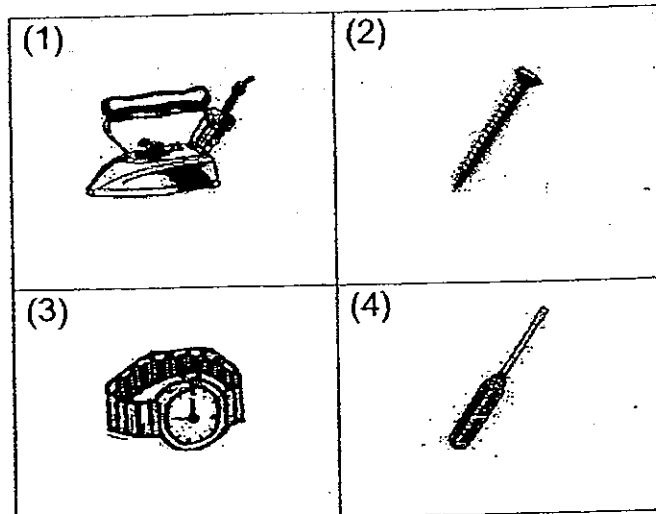
A container rolled down the stairs onto the ground and did not break. Which of the following is the container likely to be made of?

- (A) clay
- (B) metal
- (C) glass
- (D) plastic

- (1) A and C only
- (2) A and D only
- (3) B and C only
- (4) B and D only

()

17. Which of the following objects is made from only one material?



()

18. The properties of 3 different objects were observed and recorded in the table below.

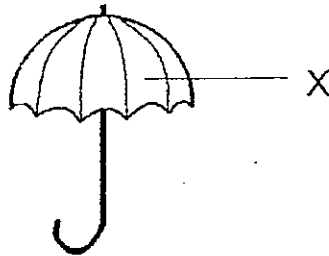
Objects \ Properties	wooden ruler	iron nail	eraser
Made of natural materials	Yes	Yes	Yes
Flexible	No	No	Yes
A	Yes	No	No

Which of the following best describes property A?

- (1) It is elastic.
- (2) It is strong.
- (3) It is hard.
- (4) It floats.

()

19. The diagram below shows an umbrella with a part marked X.

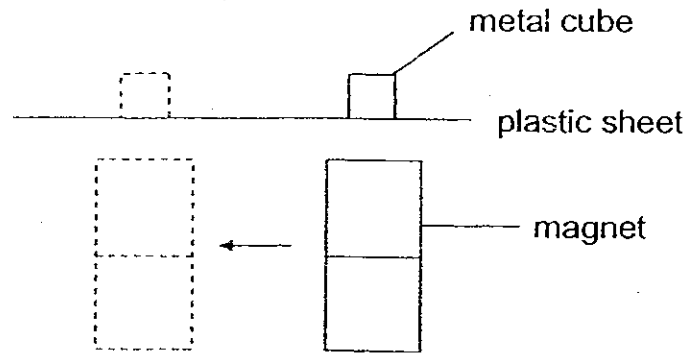


Which of the following is most suitable for making part X?

	Materials	Transparent	Waterproof	Flexible
(1)	A	No	No	Yes
(2)	B	No	Yes	No
(3)	C	No	Yes	Yes
(4)	D	Yes	Yes	No

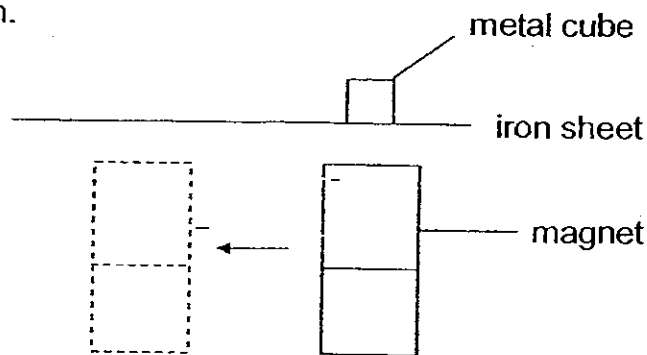
()

20. Sara placed a metal cube on a plastic sheet and held a magnet under the sheet as shown in the diagram.



She noticed that when the magnet moved, the metal cube would move in the same direction.

When the plastic sheet was replaced by an iron sheet, the metal cube did not move even when the magnet was moved as shown in the diagram.

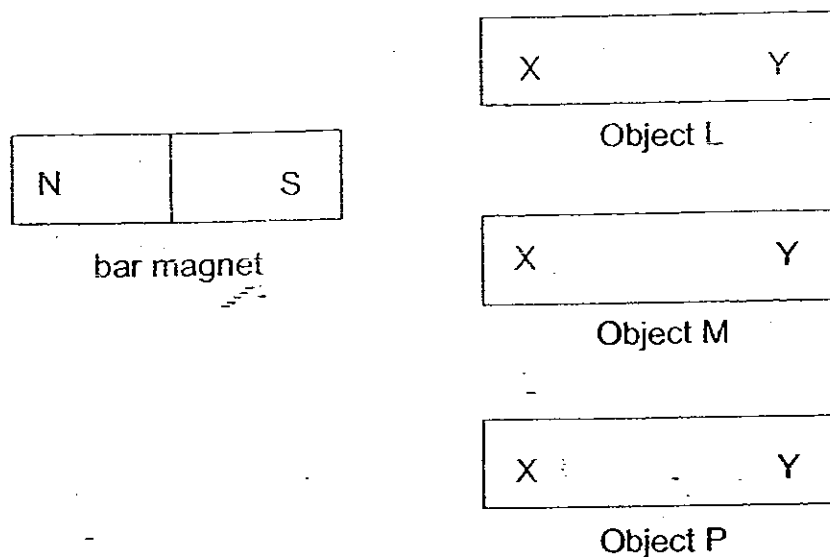


Which of the following correctly explains what happened?

- (1) The iron sheet repelled the metal cube.
- (2) The magnet was too far from the metal cube.
- (3) The metal cube was made of non-magnetic material.
- (4) The pull of the magnet did not pass through the iron sheet.

()

21. Razi carried out an experiment with a bar magnet and three objects, L, M and P, as shown below.



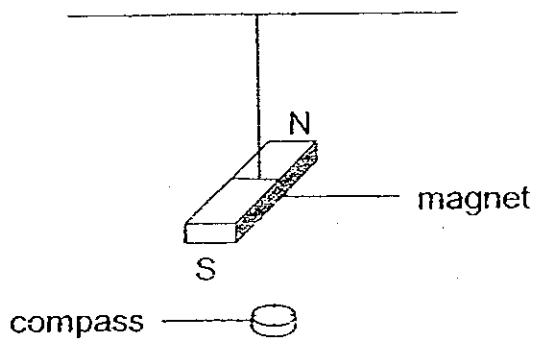
He tested each object with the bar magnet and recorded his results in a table below.

Object	Results
L	X and Y are attracted by the South pole.
M	Nothing happened at X or Y when the magnet was brought close to it.
P	X is attracted by the South pole but Y is repelled by it.

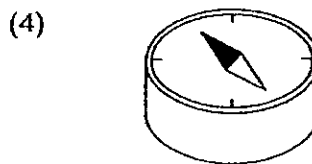
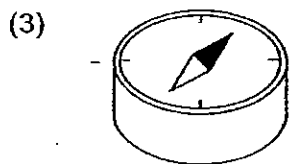
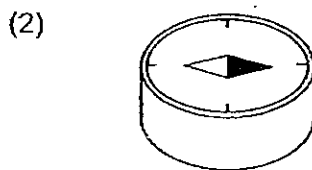
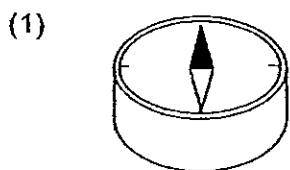
Based on the results, which statement below is correct?

- (1) Object L is a magnet. ✗
- (2) Object M is made of nickel. ✗
- (3) Object L and P are magnetic materials. ↓
- (4) Object M and P are non-magnetic materials. ✗ ()

22. Adam hangs a magnet freely and places a compass on the floor.

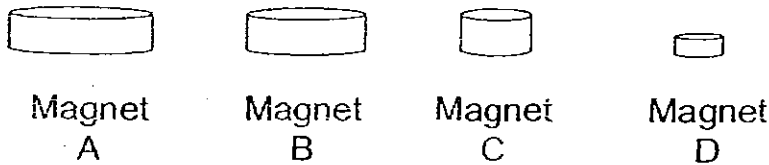


Which of the following shows the correct position of the needle of the compass?



()

23. Sari had four magnets. She brought them, one by one into a box of pins.



She ^{counted} recorded the number of pins each magnet had attracted and recorded the results.

	Magnet A	Magnet B	Magnet C	Magnet D
Number of pins attracted	20	25	15	35

Based on the table above, which statement concludes Sari's experiment?

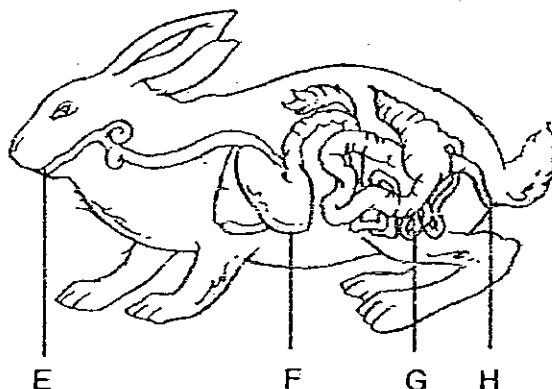
- (1) The strength of a magnet depends on its size.
- (2) Bigger magnets are stronger than smaller magnets.
- (3) Smaller magnets are stronger than bigger magnets.
- (4) The strength of a magnet does not depend on its size. ()

24. Which of the following parts of the digestive system does digestion take place?

- (A) mouth
- (B) gullet
- (C) stomach
- (D) small intestine
- (E) large intestine
- (F) anus

- (1) A, B and C only
 - (2) A, C and D only
 - (3) A, B, C, D, E and F
 - (4) A, B, C, D, and E only
- ()

25. The diagram below shows the digestive system of a rabbit.



Which part is wrongly matched to its process?

	Process	Parts
(1)	The digestive juice in the saliva removes water from food.	E
(2)	Food is crushed further and mixed with other digestive juices.	F
(3)	Simple food substances pass through its walls and are absorbed by the blood.	G
(4)	Undigested food is passed out as waste.	H

For Questions 26 to 30, please refer to Booklet K.

End of Section A

**Pei Chun Public School
Semestral Assessment 2 – 2008
Science
Primary 3**

Name: _____)

Class: Pri. 3 (_____)

Date: 24th October 2008

Time: 1 hr 30 min

Science Teacher: _____

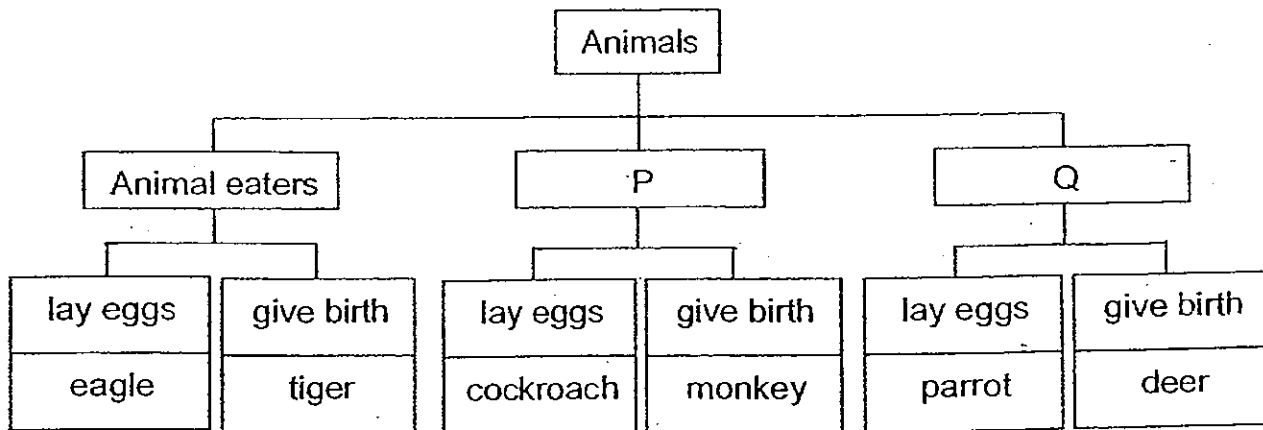
Parent's Signature: _____

Section A	60
Section B	30
Booklet K (excludes MCQs)	10
Total	100

Section B (30 marks)

For questions 31 to 42, write your answers in the spaces provided.

31. Study the classification chart below and fill in the blanks. (2 m)



Fill in the headings for letters P and Q.

P	
Q	

SCORE

2

32(a) Write down the characteristic of living things that is being described in parts (i) and (ii).

Example: Amin found a dead bird on the ground.

Living things die.

(i) A snake glides on the sand. (½ m)

(ii) A mother dog has a litter of puppies. (½ m)

(b) Study the diagrams carefully.



Plant A



Plant B

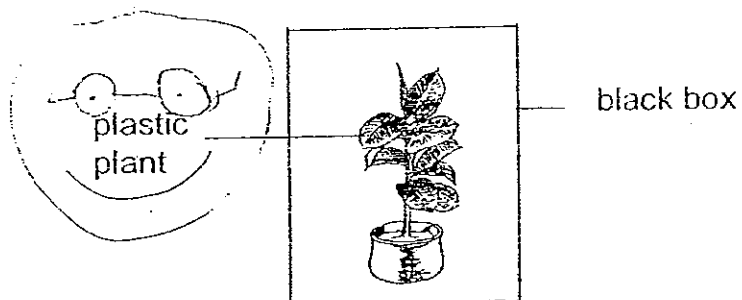
Compare the ^{stems} stem of Plant A and Plant B. State one difference.

(1 m)

SCORE

--

33. Study the diagram below.

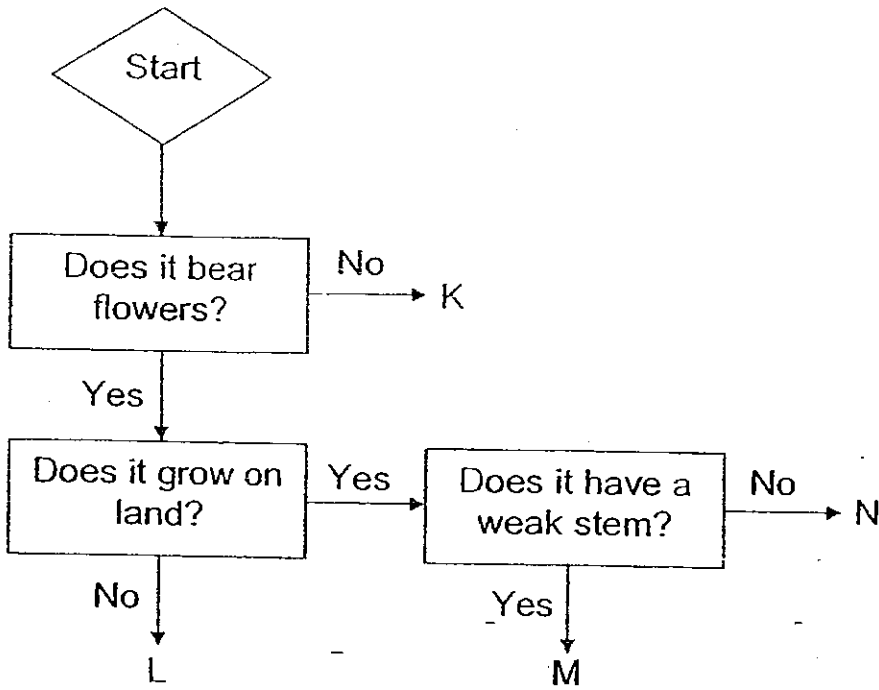


(a) What will happen to the plastic plant after 5 days? (1 m)

(b) Explain your answer in (a). (1 m)

SCORE

34. Study the flow chart carefully.



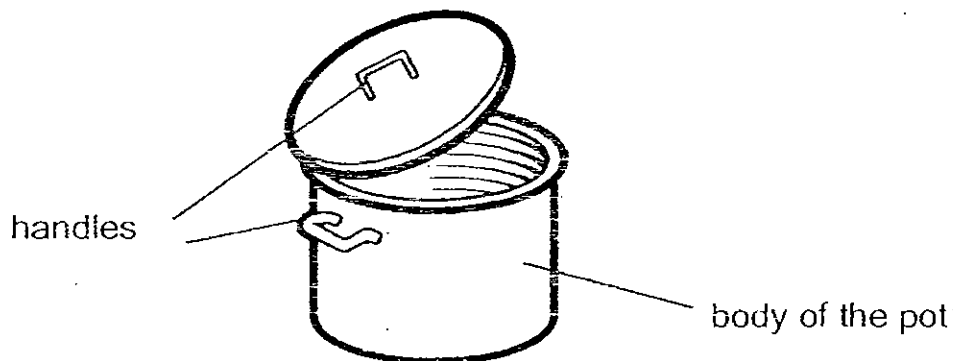
Based on the flow chart above, draw lines to match the correct plants to the letters K, L, M and N.

(2 m)

- | | |
|-----------------|-----|
| morning glory • | • K |
| water lily • | • L |
| ladder fern • | • M |
| rose • | • N |

SCORE

35. This picture shows a cooking pot.

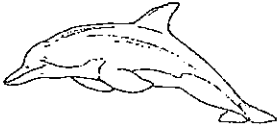
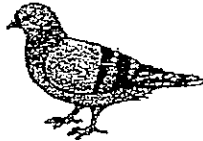

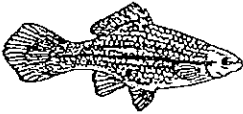



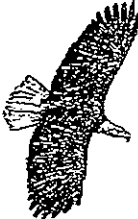



(a) Which of the following is most suitable for making the handles?
Put a tick (✓) in the correct box. (1 m)

Materials	Tick only one answer
metal	
plastic	
glass	

(b) Name a material that can be used to make the body of the pot. (1 m)

36. Study the classification table below.

Animals		
Fish	Birds	Insects
 dolphin	 pigeon	 bee
 swordtail	 penguin	 scorpion
 shark	 eagle	 beetle

(a) Which of the animals above are wrongly classified? (2 m)

(b) Based on the diagrams, name a characteristic of birds that helps to keep them warm. (1 m)

37. The diagram below shows an animal.



Liza wanted to find out if the animal is an insect. Liza carried out the following steps:

- Step A : Measure its length
- Step B : Check if it had wings
- Step C : Count the number of legs
- Step D : Count the number of body parts

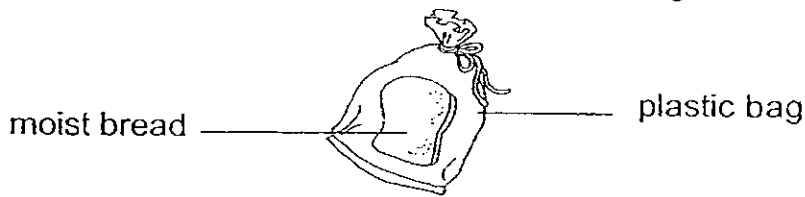
(a) Which of the steps above is/are correct in determining if the animal is an insect? (1 m)

(b) After examining the animal, Liza concluded that the animal above is not an insect. Is she correct? Give two reasons for your answer. (2 m)

Give the answer "yes" or "No".
1st reason:

2nd reason:

38. Mira put a piece of moist bread in a plastic bag.



(a) After a week, some brown patches were seen on the bread. (1 m)
What were the brown patches?

(b) Explain why the organism in (a) appeared on the bread. (2 m)

39. Riya wanted to find out the conditions needed for bacteria to grow. She poured 50 ml of milk into each beaker A, B, C and D and put them in locations with different conditions as shown below.

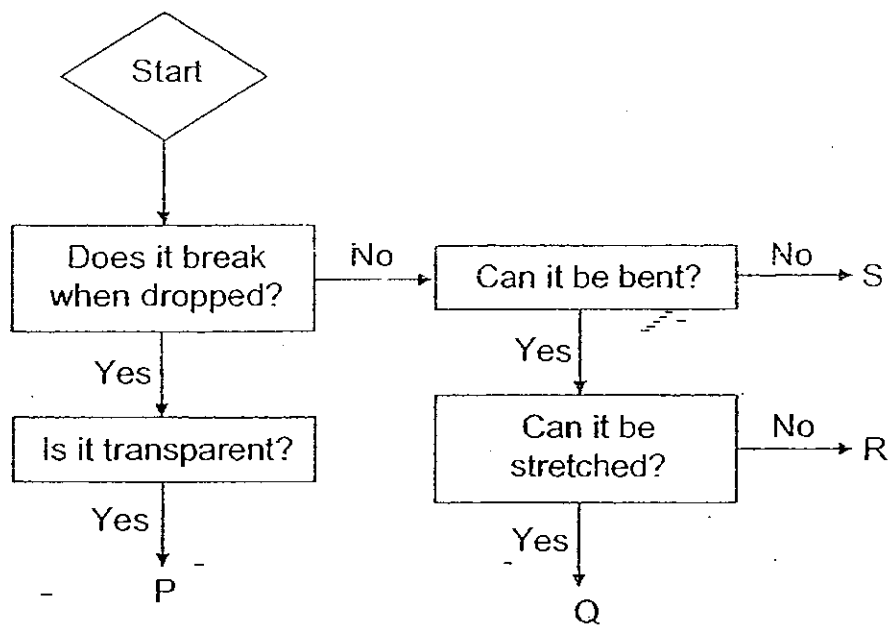
Beaker	Conditions			
	warm	cold	moist	dry
A		√		√
B	√		√	
C	√			√

(a) After 4 days, the milk in one of the beakers had lumps in it caused by bacteria. Which beaker was it? (1 m)

(b) From the observation, what are the conditions necessary for bacteria to grow? (2 m)

SCORE

40(a) Study the flow chart below.

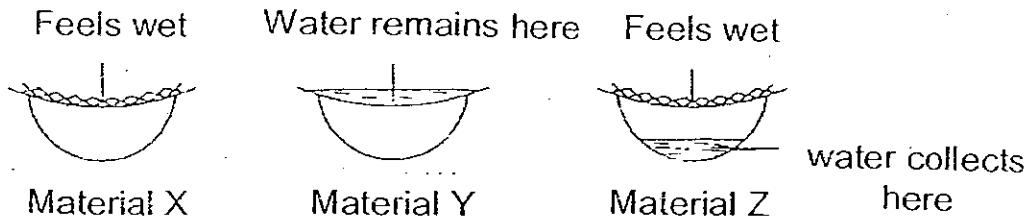


Which of the following objects best represent P, Q, R and S? (2 m)

Objects	Letters
a rubber ring	
a plastic tray	
a glass cup	
a piece of metal wire	

SCORE

40(a) Maisarah placed three sheets, each made of a different material, over the mouths of three identical bowls. She then poured an equal amount of water onto each sheet. The results are shown in the diagram below.

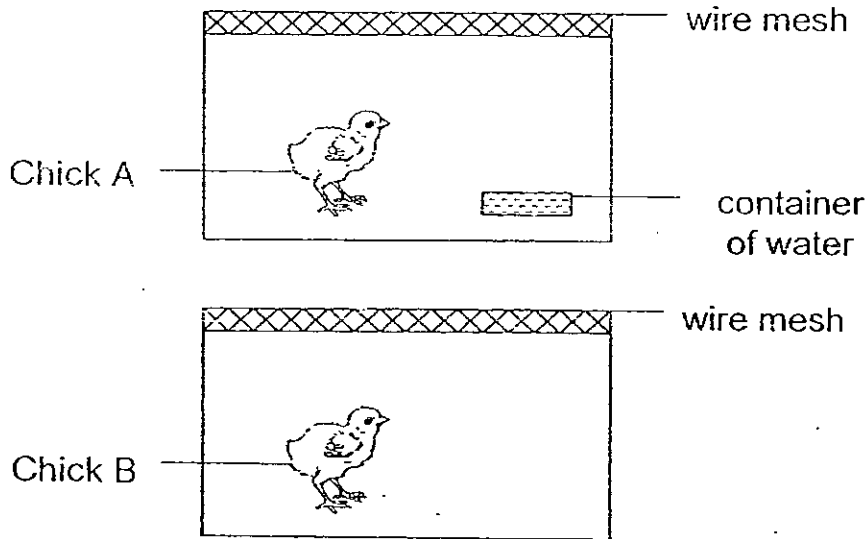


(i) Which material absorbs the most water? (1 m)

(ii) Which material, X, Y or Z, is most suitable to make a raincoat? (1 m)

SCORE

42. The diagram below shows two healthy chicks in separate containers that are covered with a wire mesh.



- (a) Based on the above diagrams, which chick will live longer? (1 m)

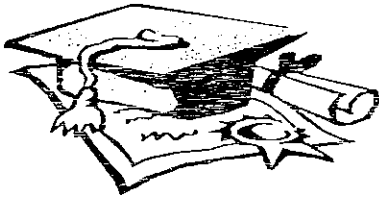
- (b) Explain your answer in (a). (1 m)

For Questions 43 to 46, please refer to Booklet K.

End of Paper

Set by : Miss Aslinda Abdullah
Vetted by : P3 Science Committee

SCORE



ANSWER SHEET

EXAM PAPER 2008

SCHOOL : PEI CHUN PRIMARY SCHOOL
 SUBJECT : PRIMARY 3 SCIENCE

TERM : SA 2

Q1	Q2	Q3	Q4	Q5	Q6	Q7	Q8	Q9	Q10	Q11	Q12	Q13	Q14	Q15	Q16	Q17
1	2	4	3	3	3	4	1	1	2	2	2	4	4	3	4	2

Q18	Q19	Q20	Q21	Q22	Q23	Q24	Q25
4	3	4	3	3	4	2	1

31)P: Animal and plant eaters

Q: Plant eaters

32)a)i) Living things more by themselves.

ii) Living things reproduce.

b) Plant A has a strong stem while plant B has a weak stem.

33)a) It will be the same.

b) It is a non-living thing because it is made of plastic.

34) Morning glory ----- M

Water lily ----- L

Ladder fern ----- K

Rose ----- N

35)a) Plastic ---- Tick only one answer

Glass ---- Tick only one answer

b) The material can be steel.

- 36)a)The dolphin and the scorpion are wrongly classified.
b)Birds have feathers to keep them warm.
- 37)a)Step C and Step D are correct in determining if the animal is an insect.
b)1)Yes, because insects have six legs while the animal has eight legs.
2)Insects have three body parts while the animal has two body parts.
- 38)a)The brown patches were bread mould.
b)Mould grow in places where there is moisture.
- 39)a)It was beaker B.
b)The necessary condition are warmth and moisture.
- 40)a)Q, S, P, R
b)i)Material X absorbs the most water.
ii)Material Y is most suitable to make a raincoat.
- 41)Ling can add more batteries and coil the wire more rounds on the rod.
- 42)a)Based on the above diagrams, Chick A will live longer.
b)Chick A has a container of water in it container while Chick B does not have a container of water. Hence, Chick A could live longer.