



Rulang Primary School

**SEMESTRAL ASSESSMENT 1
ENGLISH LANGUAGE
PAPER 2 BOOKLET A
LANGUAGE USE AND COMPREHENSION
2018**

Name : _____ () Marks : _____ / 21

Class : Primary 3 ()

Date : 3 May 2018

Setter : Mdm Noriah

21 Questions

Total Time for Booklets A and B: 1 Hour 30 Minutes

Instructions to Pupils:

1. Do not open this booklet until you are told to do so.
2. Follow all the instructions carefully.
3. Answer all the questions.
4. This question paper consists of 7 printed pages, including the cover page.

Section A: Vocabulary (6 marks)

For each question from 1 to 6, four options are given. One of them is the correct answer. Make your choice (1, 2, 3 or 4) and shade its number on the Optical Answer Sheet.

1. The teacher gave him a _____ on the back for a job well done.
 - (1) tap
 - (2) pat
 - (3) jab
 - (4) peck

2. She is _____ and believes everything that she hears.
 - (1) wise
 - (2) gullible
 - (3) sensible
 - (4) innocent

3. The firefighters were courageous and they put out the fire _____.
 - (1) timidly
 - (2) fearlessly
 - (3) nervously
 - (4) mercilessly

4. The man is _____ as he has injured his leg.
 - (1) limping
 - (2) leaping
 - (3) swaying
 - (4) stumbling

5. It was very _____ of you to help your classmate when he had problems with his schoolwork.
 - (1) polite
 - (2) selfish
 - (3) amiable
 - (4) considerate

6. John would like to be an _____ when he grows up. He is creative and has a flair for drawing.
 - (1) author
 - (2) auditor
 - (3) engineer
 - (4) illustrator

Section B: Grammar (6 marks)

For each question from 7 to 12, four options are given. One of them is the correct answer. Make your choice (1, 2, 3 or 4) and shade its number on the Optical Answer Sheet.

7. Both the twins _____ attending the basketball training tomorrow.
- (1) is
 - (2) are
 - (3) was
 - (4) were
8. Gordon _____ the money when he thought nobody was looking.
- (1) take
 - (2) took
 - (3) takes
 - (4) taken
9. Daniel gives _____ to his younger brother so that they will not quarrel.
- (1) in
 - (2) up
 - (3) off
 - (4) out
10. Mary ran to the train station _____ she did not want to miss the train.
- (1) so
 - (2) as
 - (3) but
 - (4) and
11. Gopal looks pale, _____ he?
- (1) is
 - (2) isn't
 - (3) does
 - (4) doesn't
12. The water bottle _____ I bought three weeks ago is missing.
- (1) who
 - (2) when
 - (3) which
 - (4) where

Section C: Visual Text Comprehension (4 marks)

Study the advertisement below and answer questions 13 to 16. For each question, four options are given. One of them is the correct answer. Make your choice (1, 2, 3 or 4) and shade its number on the Optical Answer Sheet.

'Learn to learn'



A Workshop for Children

Specially for your child this school holidays from 3rd to 5th June 2018. A fun-filled three-day workshop where your child will discover the joy of learning.

'Learn to learn'

Conduct fun Science experiments.

Learn facts that you never know about Mathematics.

Discover Singapore's history as we explore the different areas of our little red dot.



The workshop will be conducted by Ms Jamie Ong, a teacher with fifteen years of experience.

Find out more about the workshop by calling Mr Teo at 63840011. Register at our Education Corner on Level 1 from 10 a.m. to 4 p.m. on any of the weekdays by 7th May 2018.

Proudly brought to you by Marina Community Centre
Marina South Road.



13. The workshop will be held for _____ days.

- (1) five
- (2) two
- (3) three
- (4) four

14. Which of the following will not be taught at the workshop?

- (1) Music
- (2) History
- (3) Science
- (4) Mathematics

15. Madam Siti would like to register her son for the workshop. She can register _____.

- (1) at 9 a.m on Tuesday
- (2) at 10 a.m. on Sunday
- (3) before 4 p.m. on Monday
- (4) before 3 p.m. on Saturday

16. Which one of the following statements is false?

- (1) Registration begins on 7th May 2018.
- (2) Ms Jamie Ong has taught for fifteen years.
- (3) Marina Community Centre is the organiser of the workshop.
- (4) Mr Teo can be contacted for more information about the workshop.

Section D: Comprehension (5 marks)

Read the passage carefully and answer the questions that follow.

An Emperor had to choose a successor for his kingdom. He gave a seed each to the young men in his kingdom to plant and tend for a year. When they return in a year with their plants, he would decide on his successor.

A young man named Ling planted his seed in a pot and watered it every day hoping for his plant to grow.

When it was time to show the Emperor, Ling had nothing growing in his pot. Ling was anxious. "The Emperor won't know that I've watered it every day. He'll think that I've been idling."

His mother advised that whatever the consequences were, he had to show the Emperor his barren pot.

At the palace, the Emperor looked at the many impressive plants on display. He went to Ling and asked, "What happened here?" Ling answered him honestly:

After assessing the display, the Emperor said, "Clearly, some of you desperately want to be the Emperor and would do anything to make that happen. Ling, come here, please." Ling walked up to the Emperor slowly.

The Emperor held up his pot for all to see and the other young men sneered. Then the Emperor continued, "A year ago, I gave all of you a seed to plant and to return with your plant. The seeds that I had given you were all boiled and they could no longer grow. However, I see before me thousands of plants and only one barren pot. Integrity and courage are important attributes of a true leader."

Ling became the Emperor's successor that day.

Adapted from <https://betterlifecoachingblog.com/2010/05/04/the-emperors-seed-a-story-about-integrity/>

17.	Which word in paragraph 3 tells you that Ling was nervous? [1m]
	<div data-bbox="316 1860 992 1978" style="border: 1px solid black; height: 57px; width: 424px;"></div>

18.	Which word has the same meaning as 'honesty'? Circle either (A) or (B). [1m]
	<p><u>Integrity</u> and <u>courage</u> are important attributes of a true leader.</p> <p>(A) (B)</p>

19.	Tick ✓ your chosen answer. [1m]						
	<p>Ling was worried about facing the Emperor with his barren pot as the Emperor might think that he was _____.</p>						
	<table style="border: none;"> <tr> <td style="border: 1px solid black; width: 20px; height: 20px; display: inline-block; vertical-align: middle;"></td> <td style="padding-left: 10px;">lazy</td> </tr> <tr> <td style="border: 1px solid black; width: 20px; height: 20px; display: inline-block; vertical-align: middle;"></td> <td style="padding-left: 10px;">boastful</td> </tr> <tr> <td style="border: 1px solid black; width: 20px; height: 20px; display: inline-block; vertical-align: middle;"></td> <td style="padding-left: 10px;">irresponsible</td> </tr> </table>		lazy		boastful		irresponsible
	lazy						
	boastful						
	irresponsible						

For questions 20 and 21, read each statement and tick ✓ "True" or "False". Refer to paragraphs 6 and 7 to help you. An example has been done for you. [2m]

	Statement	True	False
Example	The Emperor was the who chose a successor for his kingdom.	✓	
20.	Many of the young men would do anything to be the new Emperor.		
21.	Ling had boiled his seed before planting it in the pot.		





Rulang Primary School

**SEMESTRAL ASSESSMENT 1
ENGLISH LANGUAGE
PAPER 2 BOOKLET B
LANGUAGE USE AND COMPREHENSION
2018**

Name : _____ () Marks : _____ / 34

Class : Primary 3 ()

Date : 3 May 2018

Setter : Mdm Noriah

29 Questions

Total Time for Booklets A and B: 1 Hour 30 Minutes

Instructions to Pupils:

1. Do not open this booklet until you are told to do so.
2. Follow all the instructions carefully.
3. Answer all the questions.
4. This question paper consists of 7 printed pages, including the cover page.

Section E: Vocabulary Cloze (6 marks)

Read the passage carefully. Choose the correct word from the words given in the box and write its letter (A to M) in each blank. The letter "I" has been omitted to avoid confusion during marking.

USE A WORD ONCE ONLY

(A) ordinary	(B) balancing	(C) created
(D) expect	(E) length	(F) measures
(G) patterns	(H) programmed	(J) research
(K) displays	(L) amazing	(M) shows

The latest art displays in Changi Airport Terminal 1 are the two Kinetic Rain sculptures made of thousands of bronze droplets. Each of the two sculptures (22) _____ 9.8 metres by 4 metres and can form 16 different shapes and (23) _____, which include an aeroplane, a hot air balloon, a kite and even a dragon. The design element in each shape (24) _____ the slow fluid movement of the art (25) _____.

The sculpture was (26) _____ over a period of twenty months. From the time the team of artists and programmers started, they worked with the space available. The team came up with an (27) _____ invention no other airport had conceived. The team's aim was to enhance the image of the new Changi Airport Terminal 1.

Adapted from <http://www.changiairport.com/en/airport-experience/attractions-and-services/kinetic-rain.html>

Section F: Grammar Cloze (6 marks)

Read the passage carefully. Choose the correct word from the words given in the box and write its letter (A to H) in each blank.

USE A WORD ONCE ONLY

(A) a	(B) and	(C) at	(D) in
(E) into	(F) on	(G) to	(H) which

The National Library Board reaches out to children of all ages through a wide variety of programmes and activities. Children up (28)_____ the age of twelve years will find relevant and engaging programmes for them (29)_____ our public libraries. Parents, grandparents and caregivers can also join (30)_____ the fun with the children in some of our programmes (31)_____ are specially designed to promote family bonding.

To nurture (32)_____ love for reading in children, we have continued to expand our range of programmes and services. We have literacy development programmes which include storytelling, reader profiling (33)_____ story writing

There are many programmes at our library where parents are able to play an active role their child's reading development.

Adapted from <https://www.nlb.gov.sg/Programmes/ProgrammesforChildren.aspx>

Section G: Comprehension Cloze (5 marks)

Read the passage carefully. Fill in each blank with a suitable word.

14 February is Valentine's Day. Many of us buy (34) _____
for the people we love to show our appreciation. We shower our loved ones
(35) _____ cards, chocolates, flowers, and even expensive
jewellery. This celebration of love was started in 1861 (36) _____ a
candy maker, Richard Cadbury, who came up with
the brilliant (37) _____ of selling chocolates in heart-shaped
packages. Valentine's Day (38) _____ since evolved into one of the
biggest consumer spending days of the year.

Adapted from <https://www.dogonews.com/2018/2/9/unique-valentines-day-traditions-from->

Section H: Editing for Spelling and Grammar (4 marks)

Correct each word in **bold** for spelling and each underlined word for grammar. Write the correct word in the relevant box.

We are always advised to eat well as we need the nutrition to keep us in a good
physical and mental condition. Good nutrition means eating different types of food that
(39) (40)
are **helthy** for the body. We need foods that contained essential vitamins and
(41)
minerals. One of the best ways to eat wisely is to have a balance diet that comprises
food from the four food groups: protein, dairy products, cereals as well as fruits and
(42)
vegebals.

Adapted from What's Up January 2014, A Park over the Streets of New York City

Section I: Synthesis and Transformation of Sentences (3 marks)

For each question, rewrite the given sentence(s) using the word provided. Your answer must be in one sentence. The meaning of your sentence must be the same as the meaning(s) of the given sentence(s).

43. James is in the Green Club. Jerry is in the Green Club too.

Both _____

44. Ramu is very friendly and helpful. His classmates like him.

_____ because

45. Mr Ahmad praised Peter. He had completed his work neatly.

As _____

Section J: Open-ended Comprehension (10 marks)

Read the passage carefully and answer the questions that follow. Write your answers in complete sentences.

The Giant Panda, looking like a bear, is also known as the panda bear, the bamboo bear or the 'large bear cat'. They are found in areas where China's bamboo forests exist as bamboo stems and leaves are the only food they eat. This destroys their habitat, the areas in which they live, as well as most of the food they eat.

Giant Pandas have dense, heavy white fur coats with large black patches on their shoulders, legs and faces. Adult pandas grow to a height of about 1.5 metres and weigh between 80 to 120 kilogrammes. These pandas have a special structure on their front feet. They have thumbs on their feet, similar to that of humans, which allow them to better grasp young bamboo stems and leaves. Since pandas eat as much as 15 to 30 kilogrammes of food each day in order to get enough nutrition to survive, they often spend ten to sixteen hours a day feeding themselves!

At one time Giant Pandas could be found all over China. Not until 1983, due to its rapid decline in numbers, was the Giant Panda officially listed as an endangered species, which means their population has become so low that they are in danger of being completely wiped out. Pandas have been endangered since. The government of China is now working on ways to preserve their habitats so as to prevent them from being extinct.

Adapted from: Success in Comprehension

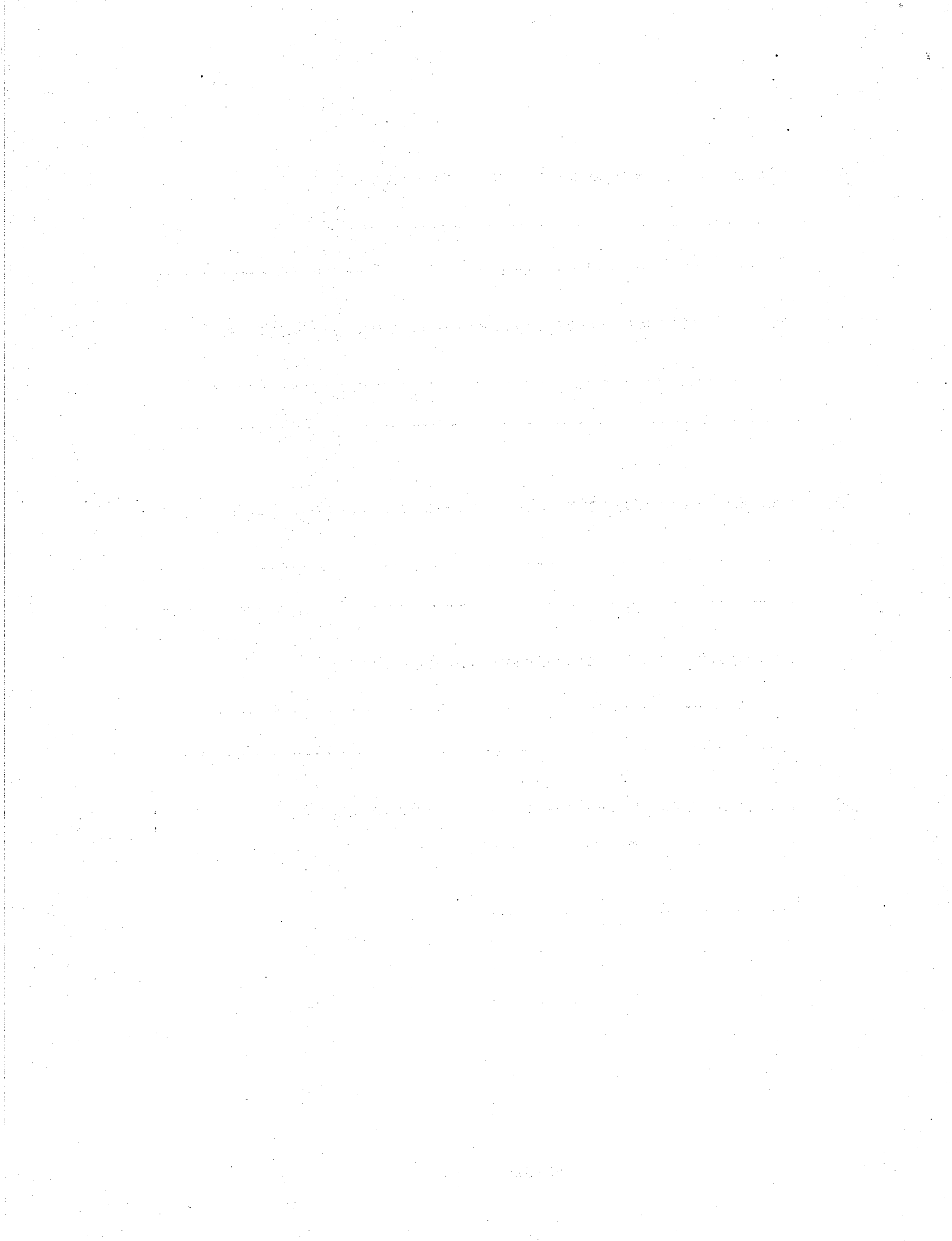
46. Why are Giant Pandas also known as bamboo bears?

47. Why do Giant Pandas find eating young bamboo stems and leaves easy?

48. How did Giant Pandas become listed as one of the endangered species?

49. What does the word "them" in the last paragraph refer to?

50. Which word in the passage has the same meaning as "thick"?



EXAM PAPER 2018 (P3)

SCHOOL : RULANG

SUBJECT : ENGLISH

TERM : SA1

Q1	Q2	Q3	Q4	Q5	Q6	Q7	Q8	Q9	Q10
2	2	2	1	4	4	2	2	1	2
Q11	Q12	Q13	Q14	Q15	Q16				
4	3	3	1	3	1				

Q17) anxious

Q18) A

Q19) lazy

Q20) True

Q21) False

Q22) E

Q23) G

Q24) M

Q25) K

Q26) C

Q27) L

Q28) G

Q29) C

Q30) D

Q31) H

Q32) A

Q33) B

Q34) presents

Q35) with

Q36) from

Q37) idea

Q38) has

Q39) healthy

Q40) contain

Q41) balanced

Q42) vegetables

Q43) Both James and Jerry are in the Green Club.

Q44) Ramu's classmates like him because he is very friendly and helpful.

Q45) As Peter had completed his work neatly, Mr Ahmad praised him.

Q46) Because they look like a bear and they are found in areas where China's bamboo forests exist as bamboo stems and leaves are the only food they eat.

Q47) They have a special structure on their in front feet that looks like humans have which allows them to grasp young bamboo stems and leaves.

Q48) Their population had declined rapidly that they wore in danger of being completely wiped out.

Q49) It refers to Giant Pandas

Q50) dense

