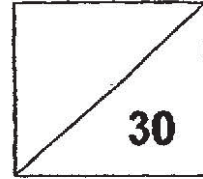


River Valley Primary School
Primary 3 Science Weighted Assessment 3
Term 3 2019



Name: _____ () Parent's Signature: _____

Class: P3 _____

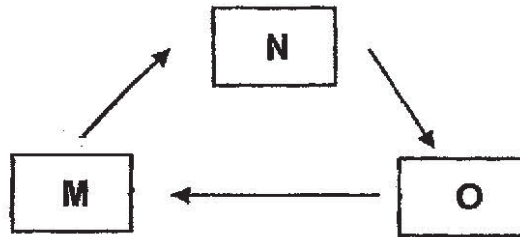
Date: 26 August (Mon)

Duration: 30 min

Part A: Multiple Choice Questions (MCQ) [12m]

For Questions 1 to 6, four options (1, 2, 3 or 4) are given. Choose the correct option and write your answers in the brackets provided.

1. The life cycle of insect T is made up of three stages.

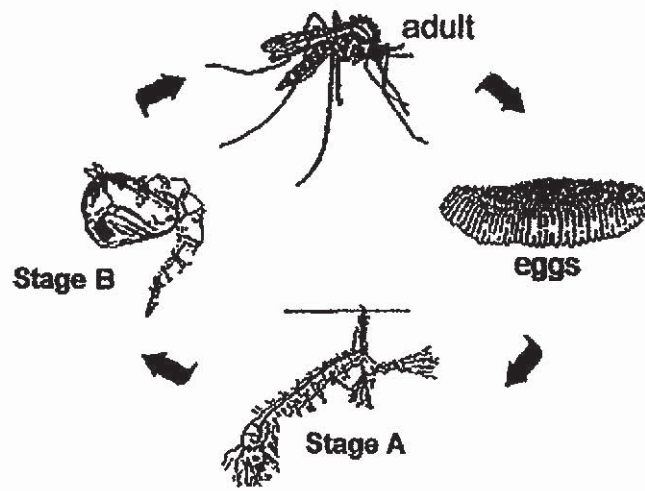


Which of the following correctly represents stages M, N and O?

	M	N	O
(1)	nymph	egg	adult
(2)	egg	adult	nymph
(3)	nymph	adult	egg
(4)	adult	nymph	egg

()

2. The diagram below shows the various stages in the life cycle of a mosquito.

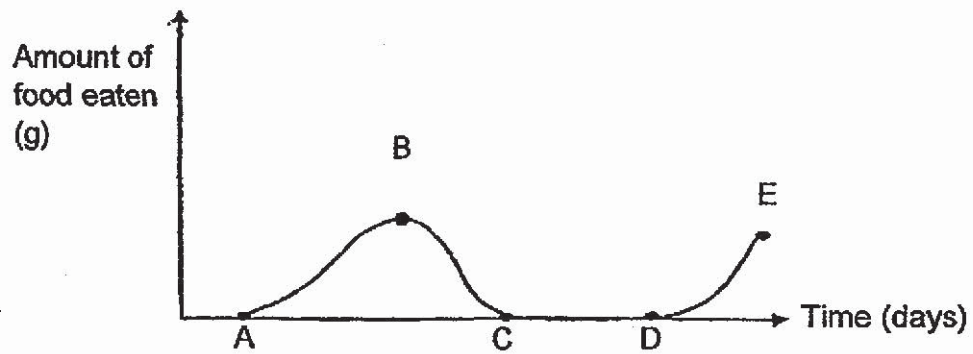


Life Cycle of a Mosquito

Which pair of the following statements correctly describes what happens during Stage A and Stage B?

	Stage A	Stage B
(1)	It can fly.	It starts to moult.
(2)	It lives in water.	It lives on land.
(3)	It stops eating.	It feeds on blood.
(4)	It moults a few times.	It stops eating.

3. The diagram below shows the amount of food eaten by a butterfly at the different stages of its life cycle.

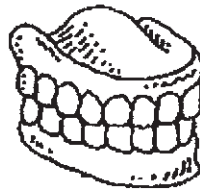


Which of the following periods shows that the butterfly is at the pupa stage?

- (1) From C to D
- (2) From B to C
- (3) From D to E
- (4) From A to B

()

4. Dentures are false teeth used by people. Ms Tan wears dentures when she eats. The diagram below shows how her dentures look like.



How do the dentures help Ms Tan to digest her food?

- (1) The dentures produce saliva.
- (2) The dentures make the food wet.
- (3) The dentures absorb water from the food.
- (4) The dentures break the food down into smaller pieces.

()

5. Four pupils each made a statement about the human digestive system.

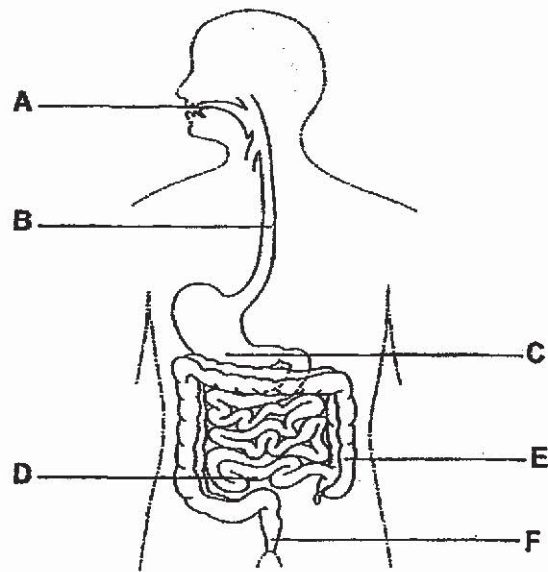
Pupil	Statement
Joshua	Water is removed from the digested food in the stomach.
Valentino	Saliva contains digestive juice that helps in the process of digestion.
Kane	Digestion is completed in the large intestine.
Harry	Undigested food is absorbed by the blood in the small intestine.

Who is correct?

- (1) Kane
- (2) Harry
- (3) Joshua
- (4) Valentino

()

6. Study the diagram of the human digestive system below.



Which of the following is correct?

	Parts where digestive juice is added	Part where solid waste is passed out of the body
(1)	A, B and D	F
(2)	A, C and D	F
(3)	A, B and C	E
(4)	B, C and D	E

()

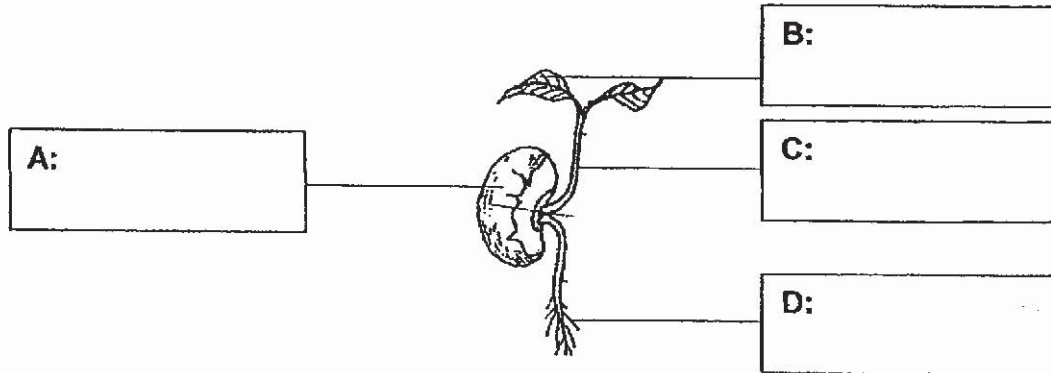
Part B: Open-Ended Questions [18m]

For Questions 7 to 11, write your answers in the blanks provided.

7. Study the diagram of a seedling below.

(a) Label the parts accordingly.

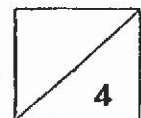
[2m]



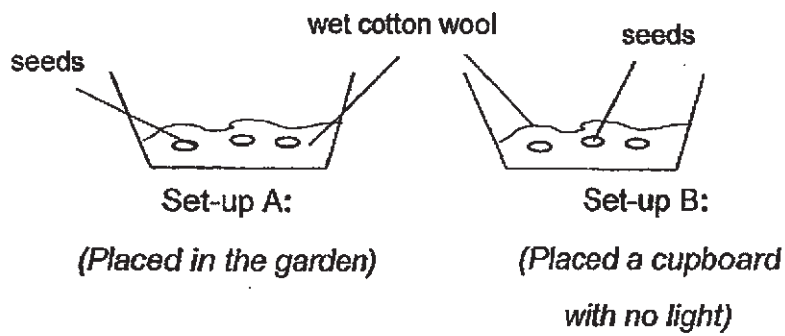
(b) Jamie decided to remove part B from the seedling.

What do you think will happen to the seedling plant after a few days? Explain your answer.

[2m]



8. Ram set up an experiment as shown below.



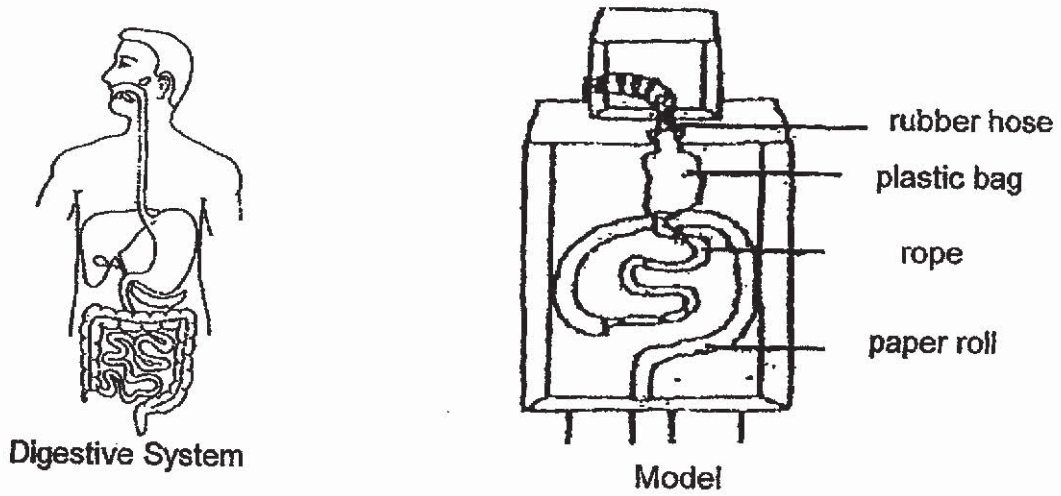
(a) State the three conditions needed for a seed to become a young plant. [2m]

(b) Ram saw that the roots appeared first as the seeds in Set-up A grew. Explain why the roots appeared first. [1m]

(c) Ram suggested that the seeds in Set-up B would still grow to become a young plant. Explain his suggestion. [1m]



9. Andrew used some objects to make a model to represent the human digestive system, as shown below.



(a) Name the parts of the system represented by the following objects. [2m]

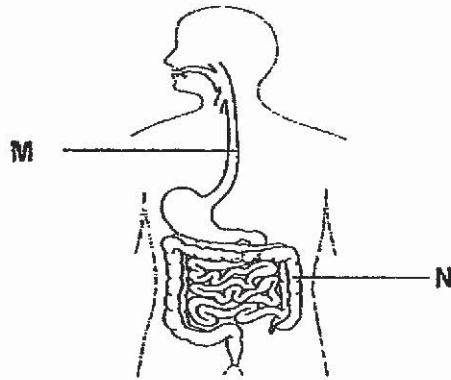
(i) rope : _____

(ii) rubber hose: _____

(b) What happens to the digested food after digestion is completed in the small intestine?
[1m]



10. (a) State the **functions** of Part M and Part N of the human digestive system as shown below. [2m]

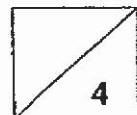
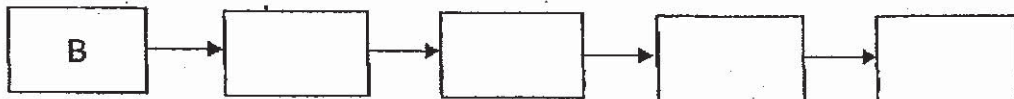


Part M: _____

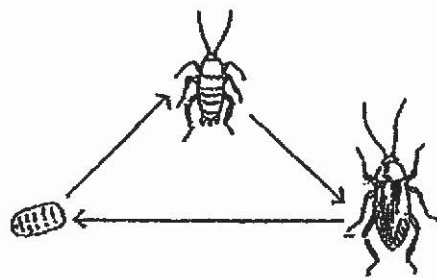
Part N: _____

(b) Jamie was hungry and ate a cookie. Using the letters below, label the path taken by the cookie as it goes through digestion. The first box has been done for you. [2m]

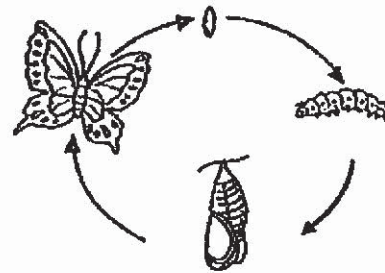
A:	Stomach
B:	Mouth
C:	Large Intestine
D:	Gullet
E:	Small Intestine



11. The diagrams below show the life cycle of two insects, butterfly and cockroach.



Life Cycle of Cockroach



Life Cycle of Butterfly

(a) State **one** difference between the life cycle of a cockroach and butterfly based on how the young and adult look like. [1m]

The diagram below shows two of the stages in the life cycle of a butterfly.



Stage X



Stage Y

The table below shows the number of leaves on a plant where the young of the butterfly lived from Day 1 to Day 20.

Number of days	1	4	9	15	20
Number of leaves left	200	155	90	40	40

(b) At Stage X, the number of leaves decrease from Day 1 to Day 15. Explain why.

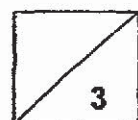
[1m]

(c) Why did the number of leaves remain the same after Day 15?

[1m]

~End of Paper~

Page 10 of 10

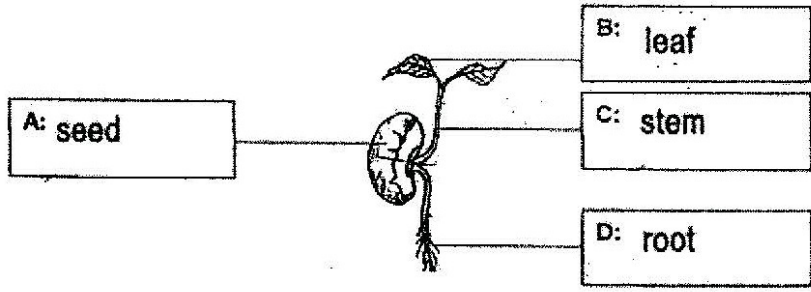



SCHOOL : RIVER VALLEY PRIMARY SCHOOL
 LEVEL : PRIMARY 3
 SUBJECT : SCIENCE
 TERM : 2019 CA2

BOOKLET A

Q 1	Q2	Q3	Q4	Q5	Q6
3	4	1	4	4	2

BOOKLET B

Q7)	<p>a)</p>  <p>b)The seedling will die. The plant cannot make food.</p>
Q	<p>a)Air , water and warmth. b)It need to absorb water. c)There is air, water, and warmth for the plant to grow into a young plant.</p>
Q9)	<p>ai)rope : Small intestine ii)rubber hose : Gullet b)The digested food will be absorbed into the bloodstream.</p>

Q10)	<p>a)Part M : Transports food from the mouth. Part N : Absorb water from the undigested food.</p> <p>b) </p>
Q11)	<p>a)The young of the cockroach resembles its adult but the young of the butterfly does not resembles its.</p> <p>b)Stage X is the larva stage, the larva eat a lot of leaves.</p> <p>c)The pupa stage does not feed.</p>

