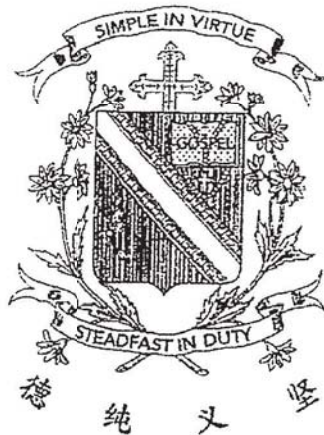


Name: _____ ()

Class: Primary 3 _____

CHIJ ST NICHOLAS GIRLS' SCHOOL



Primary 3 End-Year Assessment SCIENCE

BOOKLET A

24 October 2019

Total Time for Booklets A and B: 1 hour 30 minutes

24 questions
48 marks

Do not open this booklet until you are told to do so.
Follow all instructions carefully.
Answer all questions.

This booklet consists of 16 printed pages.

Section A (24 x 2 marks = 48 marks)

For each question from 1 to 24, four options are given. One of them is the correct answer. Make your choice (1, 2, 3 or 4). **Shade the correct oval (1, 2, 3 or 4) on the Optical Answer Sheet provided.**

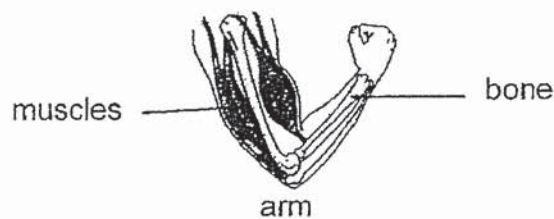
1. The table below shows the characteristics of four things A, B, C and D.

Things	Characteristics		
	Does it need air?	Does it move from place to place?	Does it reproduce?
A	No	No	No
B	Yes	No	Yes
C	No	Yes	No
D	Yes	Yes	Yes

Which one of the following things A, B, C or D best represents a kite flying in the sky?

- (1) A
- (2) B
- (3) C
- (4) D

2. Study the diagram below.



What are the functions of the muscles?

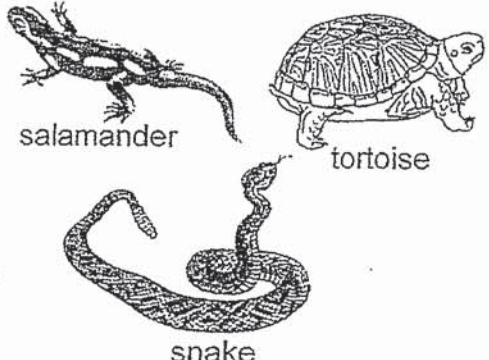
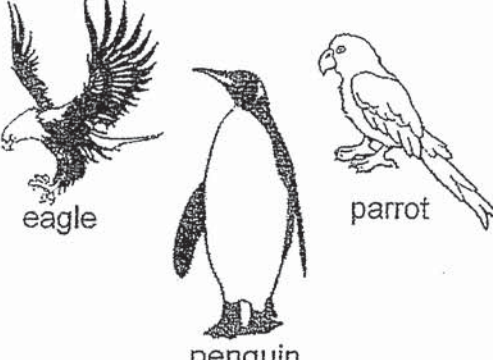
- (1) Muscles support the body.
- (2) Muscles give the body shape.
- (3) Muscles strengthen the bones.
- (4) Muscles enable different parts of the body to move.

3. Which of the following statements about bacteria are true?

- A Bacteria can reproduce.
- B All bacteria are harmful.
- C All bacteria are not microorganisms.
- D Bacteria feed on other living things, dead or alive.

- (1) A and B only
- (2) A and D only
- (3) B and C only
- (4) B and D only

4. Study the classification table below.

Group P	Group Q
 <p>salamander</p> <p>tortoise</p> <p>snake</p>	 <p>eagle</p> <p>penguin</p> <p>parrot</p>

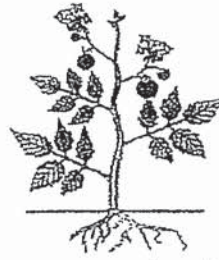
Which one of the following animals is classified wrongly?

- (1) parrot
- (2) tortoise
- (3) penguin
- (4) salamander

5. The diagram below shows organisms A and B.



organism A

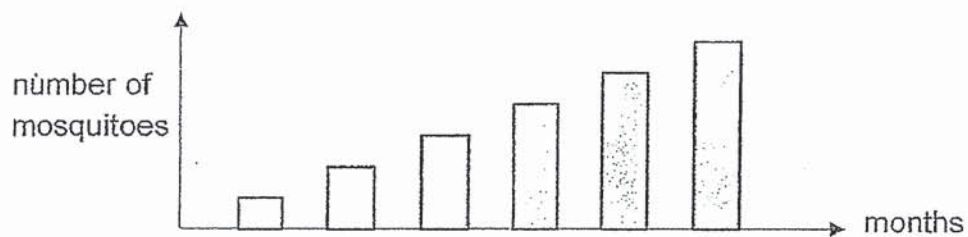


organism B

Which one of the following classifications best describes organisms A and B?

	Organism A	Organism B
(1)	land plants	water plants
(2)	cannot make its own food	can make its own food
(3)	reproduce from seeds	reproduce from spores
(4)	non-flowering plants	flowering plants

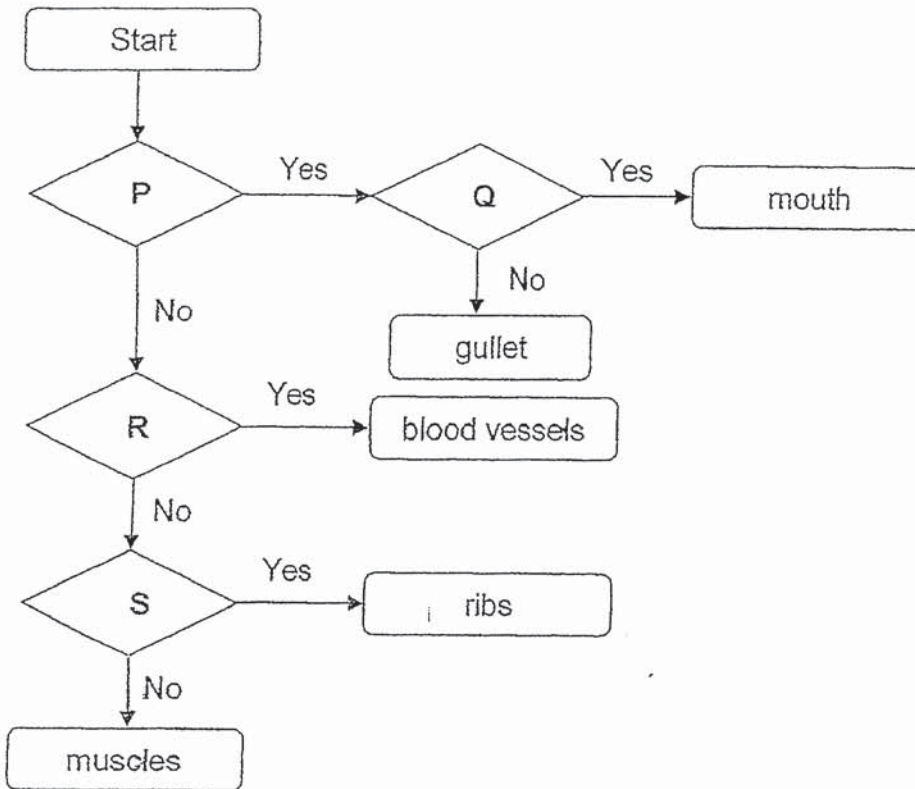
6. Study the graph below.



Which characteristic of living things does the graph show?

- (1) Living things can grow.
- (2) Living things can reproduce.
- (3) Living things can respond to changes.
- (4) Living things need air, food and water to survive.

7. Study the flow chart below.



Based on the flow chart above, which one of the following best represents P, Q, R and S?

	P	Q	R	S
(1)	Is it part of the skeletal system?	Is it part of the digestive system?	Is it part of the muscular system?	Is it part of the circulatory system?
(2)	Is it part of the respiratory system?	Is it part of the circulatory system?	Is it part of the skeletal system?	Is it part of the circulatory system?
(3)	Is it part of the digestive system?	Does it break down food into simpler substances?	Is it part of the circulatory system?	Is it part of the skeletal system?
(4)	Does it break down food into simpler substances?	Is it part of the digestive system?	Is it part of the respiratory system?	Is it part of the skeletal system?

8. Study the classification table below.

Group A	Group B
balloon	tiger
skateboard	bracket fungi
rock	mimosa plant

Which of the following are the correct headings for group A and group B?

	Group A	Group B
(1)	can reproduce	cannot reproduce
(2)	cannot grow	can grow
(3)	cannot make its own food	can make its own food
(4)	can respond to changes	cannot respond to changes

9. Three children made the following statements about plants.

Abby All plants have flowers.

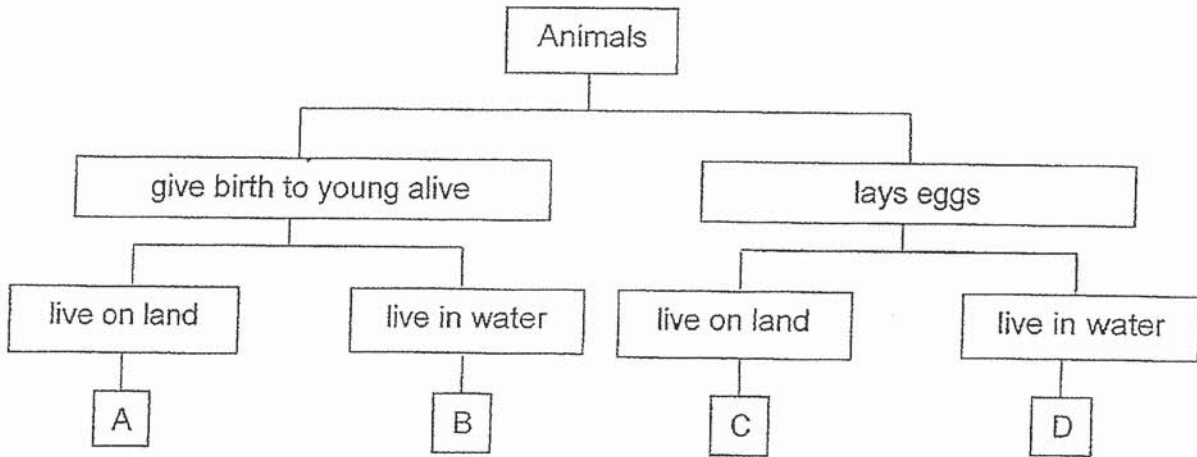
Betty All plants have roots and fruits.

Candy Some plants have edible fruits while other plants have inedible fruits.

Who made incorrect statements?

- (1) Abby and Betty only
- (2) Abby and Candy only
- (3) Betty and Candy only
- (4) Abby, Betty and Candy

10. Study the classification table below.



Which one of the following A, B, C or D best describes a bat?

- (1) A
- (2) B
- (3) C
- (4) D

11. Lisa wanted to find out if plants need water to grow. She bought two similar plants A and B. She watered plant A daily but did not water plant B at all.



plant A

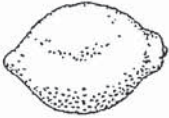





plant B

In which location should she place plant A and B for her experiment?

	Plant A	Plant B
(1)	in the garden	in the cupboard
(2)	in a dark room	in an open field
(3)	in the garden	in the garden
(4)	in the cupboard	in the garden

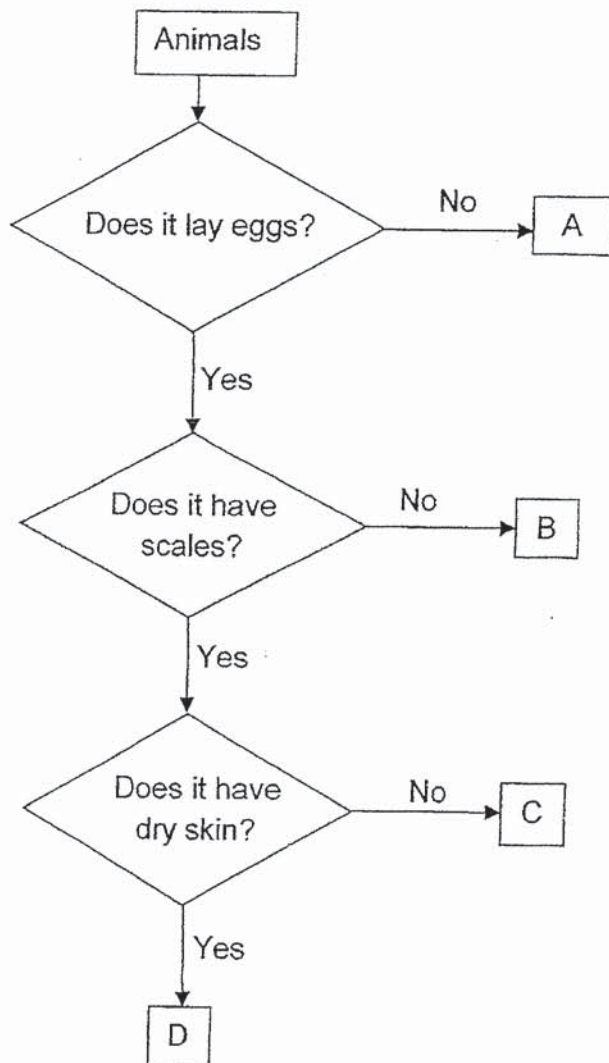
12. Study the classification table below.

Group J	Group K
 <p data-bbox="480 629 564 658">lemon</p>  <p data-bbox="491 882 553 911">lime</p>	 <p data-bbox="1007 629 1118 658">cupcake</p>  <p data-bbox="1018 882 1107 911">honey</p>

Based on the classification table, how are the items grouped?

- (1) according to their taste
- (2) according to their shape
- (3) according to their colour
- (4) according to their texture

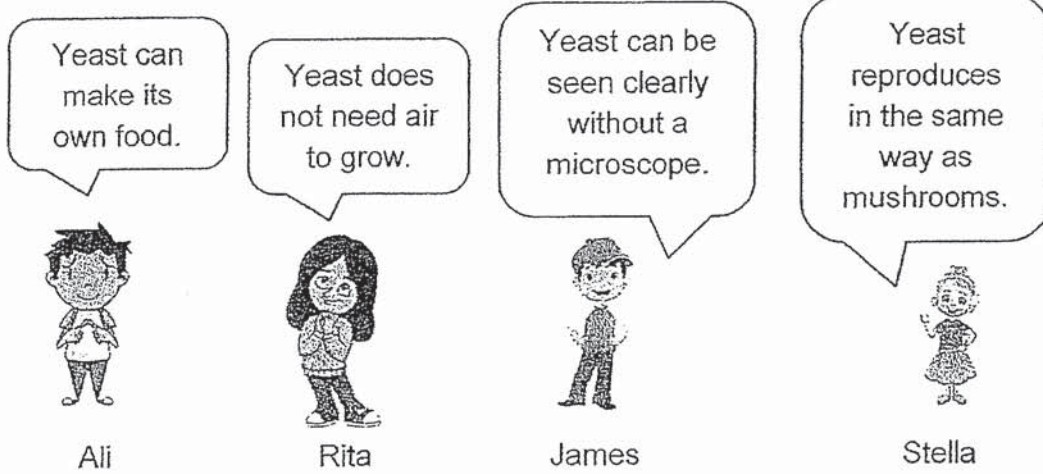
13. Study the flow chart shown below.



Based on the flow chart above, which of the following best represents animals A, B, C and D?

	A	B	C	D
(1)	orang-utan	mosquito	snake	ant
(2)	giraffe	newt	angelfish	turtle
(3)	grasshopper	goldfish	penguin	elephant
(4)	goldfish	bat	beetle	parrot

14. Four pupils made some statements about yeast.



Yeast can make its own food.

Yeast does not need air to grow.

Yeast can be seen clearly without a microscope.

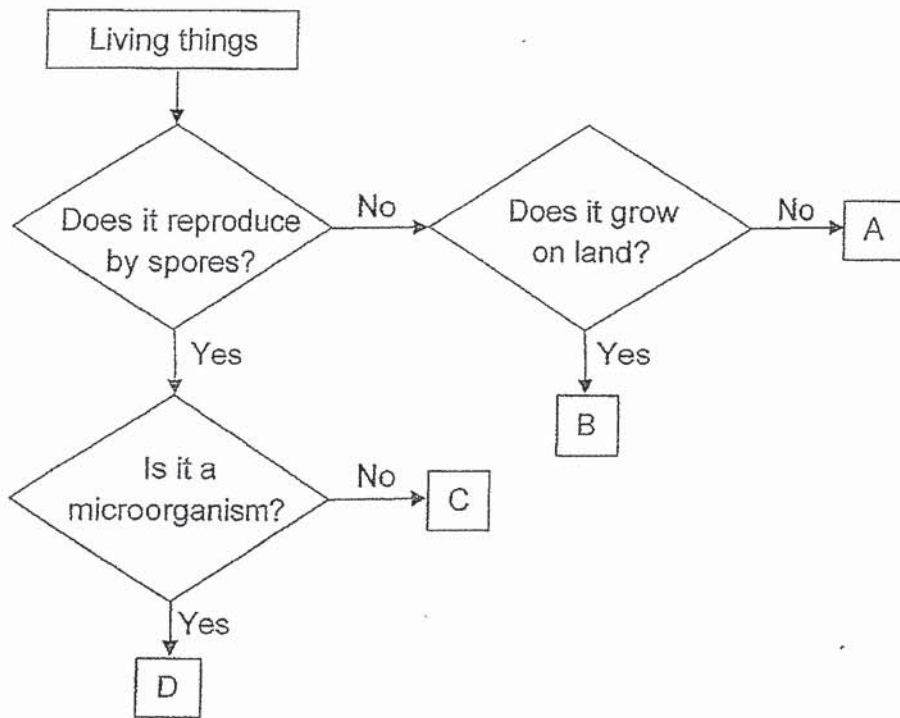
Yeast reproduces in the same way as mushrooms.

Ali Rita James Stella

Which one of the pupils has made a correct statement?

- (1) Ali
- (2) Rita
- (3) Stella
- (4) James

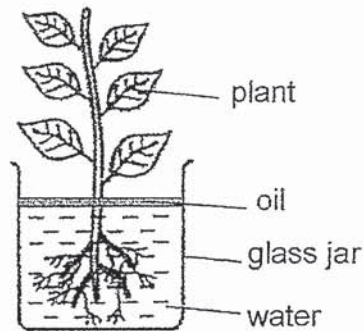
15. Study the flow chart below.



Based on the flow chart above, which one of the organisms A, B, C or D best represents a plant and a mould?

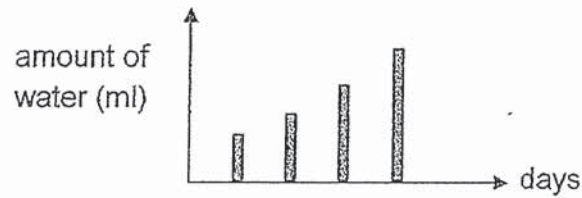
	Plant	Mould
(1)	A	B
(2)	B	C
(3)	C	D
(4)	D	A

16. Jane filled a glass jar with water and placed a plant in it.

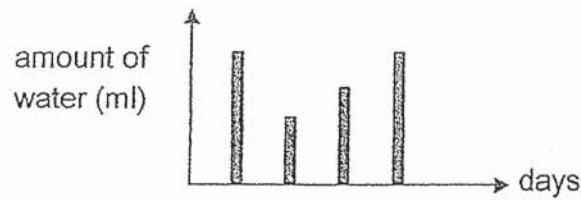


She recorded the amount of water in the glass jar over four days. Which one of the following graphs best represents the amount of water in the glass jar?

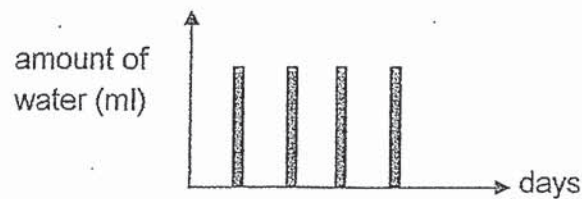
(1)



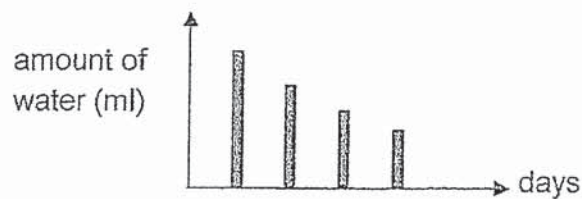
(2)



(3)



(4)



17. The table below shows the properties of materials S, T, U and V. A tick (✓) shows that the material has the property.

Properties	Materials			
	S	T	U	V
flexible		✓		
break easily	✓		✓	
able to float		✓	✓	

Based on the table above, which material S, T, U or V is most suitable for making a walking stick to provide support for the elderly?

- (1) S
- (2) T
- (3) U
- (4) V

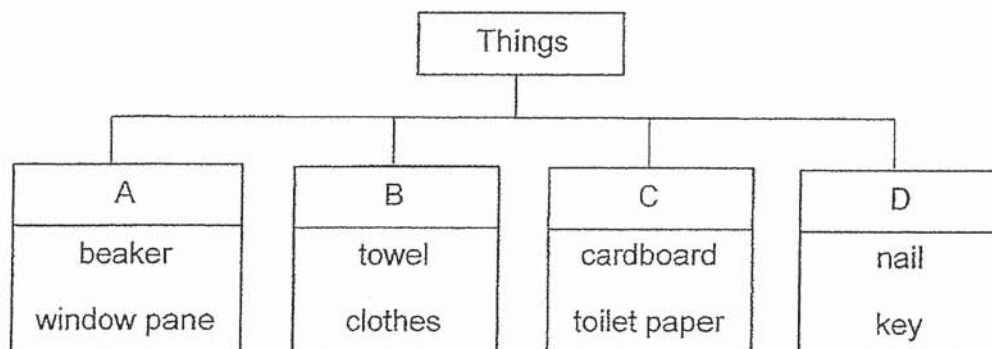
18. The properties of three objects are shown in the table below.

Properties	Objects		
	rubber band	fish tank	cotton towel
X	Yes	No	Yes
transparent	No	Yes	No

Which of the following best represents property X?

- (1) strong
- (2) flexible
- (3) waterproof
- (4) able to sink in water

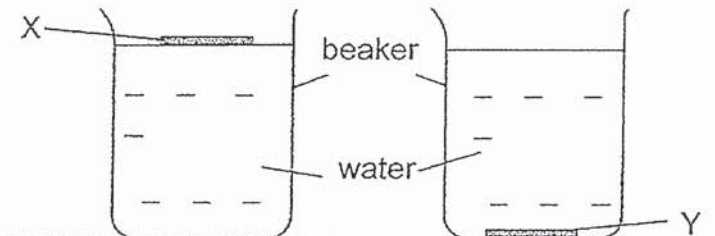
19. Study the classification chart below.



In which group would you classify a coin?

- (1) A
- (2) B
- (3) C
- (4) D

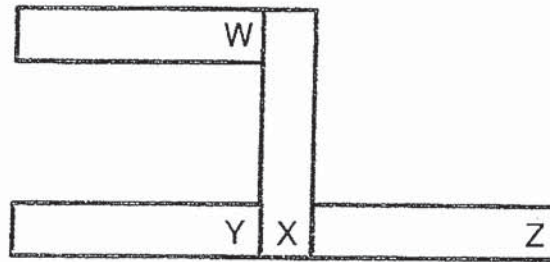
20. Jamie placed materials X and Y which are of the same size and thickness in two identical beakers of water as shown below.



Based only on the diagram, which of the following observations can she make?

- A Y sinks in water.
 - B X floats on water.
 - C Y is stronger than X.
 - D X is more flexible than Y.
-
- (1) A and B only
 - (2) A and D only
 - (3) B and C only
 - (4) C and D only

21. The diagram below shows four bar magnets that are attracted to one another.



Which of the following represents the poles at W, X, Y and Z correctly?

	W	X	Y	Z
(1)	north	north	south	north
(2)	south	north	south	north
(3)	north	south	south	north
(4)	north	north	north	south

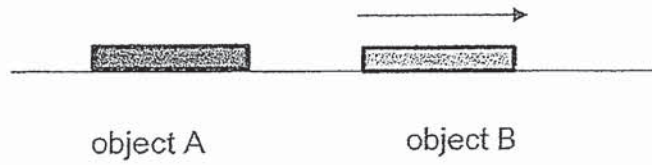
22. Joe brought a magnet close to each of the following objects.

- A glass marble
- B steel clip
- C iron nail
- D aluminium can

Which of the following will be observed?

	Attracted by the magnet	Not attracted by the magnet
(1)	B and C	A and D
(2)	C and D	A and B
(3)	C only	A, B and D
(4)	B, C and D	A only

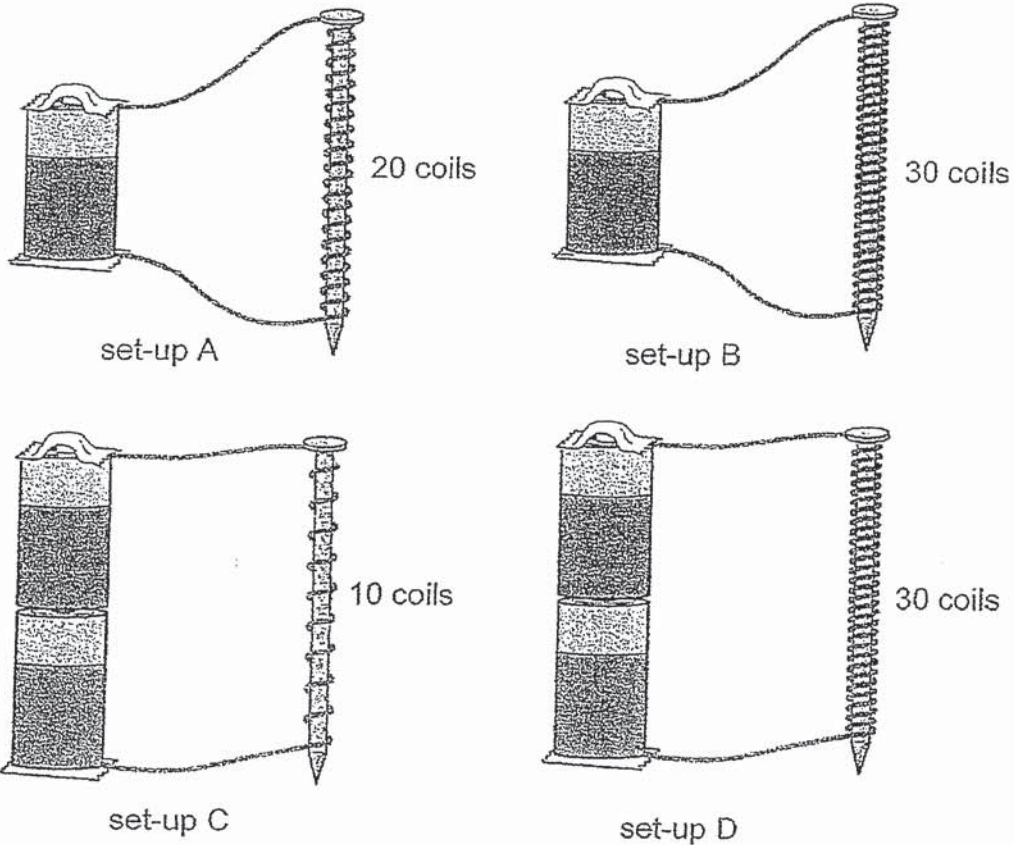
23. When object A was brought near one end of object B, object B moves in the direction as shown by the arrow.



What can we conclude about objects A and B?

- (1) Both objects are made of copper.
- (2) Both objects A and B are magnets.
- (3) Only one of the objects is a magnet.
- (4) Only one of the objects is a non-magnetic material.

24. An iron nail becomes an electromagnet when it is placed in a coil of wire connected to batteries. Danny wanted to find out if the number of batteries used would affect the strength of an electromagnet.



Which two set-ups should he choose to conduct a fair test?

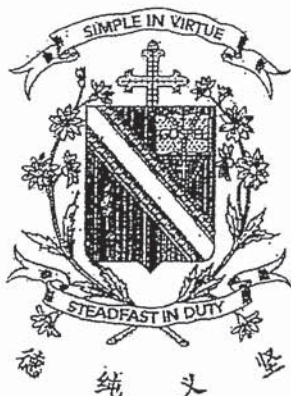
- (1) set-up A and set-up B only
- (2) set-up B and set-up C only
- (3) set-up B and set-up D only
- (4) set-up C and set-up D only

END OF BOOKLET A

Name : _____ ()

Class : Primary 3 _____

CHIJ ST NICHOLAS GIRLS' SCHOOL



Primary 3 End-Year Assessment 2019 SCIENCE

BOOKLET B

24 October 2019

Total Time for Booklets A and B: 1 hour 30 minutes

10 questions
32 marks

Do not open this booklet until you are told to do so.
Follow all instructions carefully.
Answer all questions.

This paper consists of 10 printed pages.

Booklet A	48
Booklet B	32
Total	80

Parent's Signature/Date

Section B (32 marks)

For questions 25 to 34, write your answers in this booklet.

The number of marks available is shown in the brackets at the end of each question or part question.

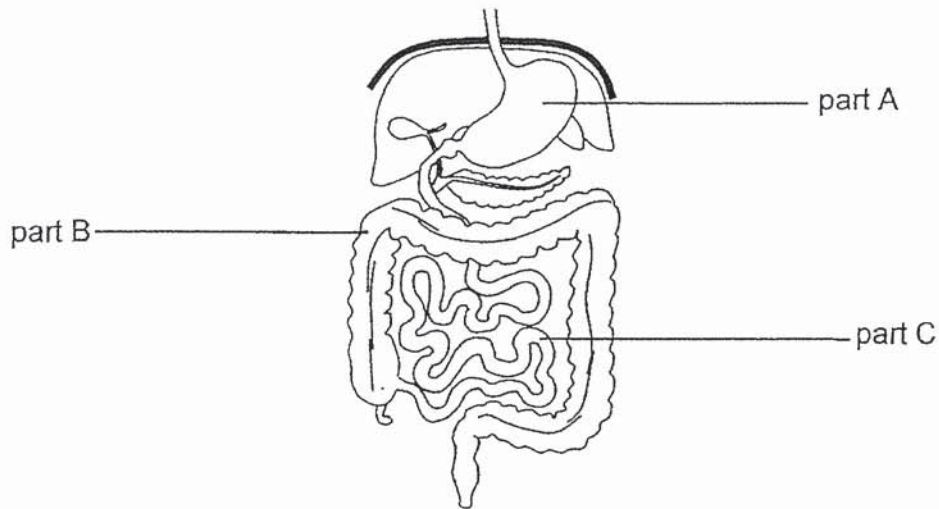
25. The statements below describe the characteristics of living things.

- A Living things can die.
- B Living things can grow.
- C Living things can reproduce.
- D Living things need air to live.
- E Living things need water to stay alive.
- F Living things can respond to changes in the environment.

Match the letters A, B, C, D, E and F to the correct observations below. Each letter can only be used once. [3]

	Observations	Characteristics of living things
(a)	A turtle comes up to a beach to lay eggs.	
(b)	A little girl increases in height after a year.	
(c)	A boy covers his ears every time he hears thunder.	
(d)	Fish in the aquarium dies when the air pump stops working.	
(e)	A cockroach is being hit and crushed with a roll of newspaper.	
(f)	A balsam plant withers and dries up when it is not watered for two weeks.	

26. The picture below shows part of the human digestive system.



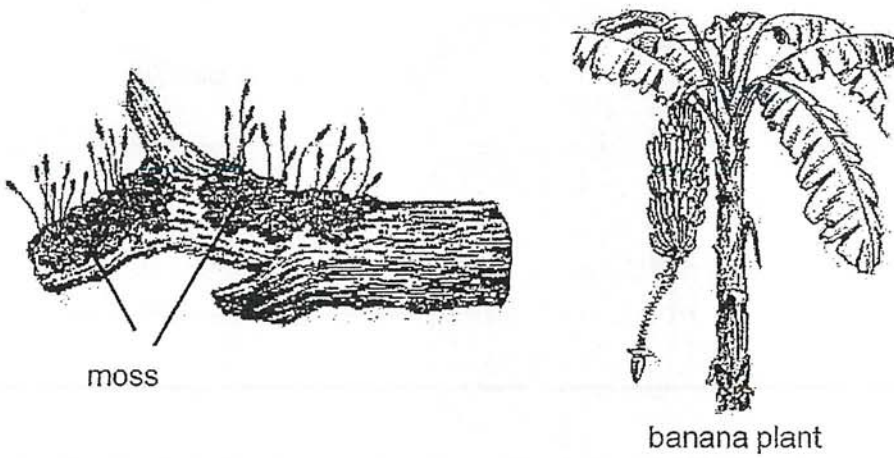
(a) State the substances absorbed by part B and C. [2]

Substance(s) absorbed by part B: _____

Substance(s) absorbed by part C: _____

(b) State one similarity in the function of part A and part C. [1]

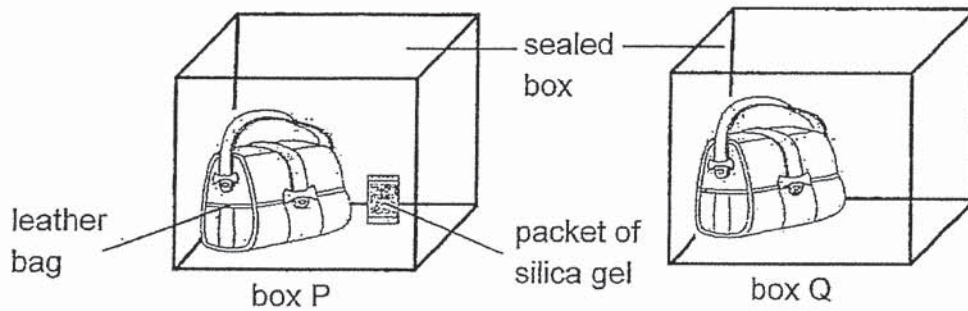
27. The diagram below shows a moss and a banana plant.



(a) How are they similar in the way they obtain food? [1]

(b) How are the parts of a moss and a banana plant different? [1]

28. Aishah placed a leather bag in each of the two identical boxes P and Q shown below. She placed a packet of silica gel in box P. Silica gel helps to remove moisture.



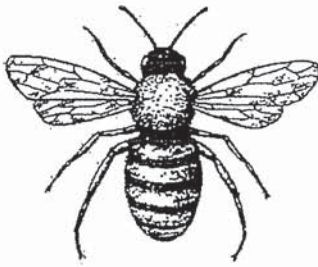
After a month, she noticed grey powdery substances on only one of the bags.

- (a) Which box was the bag with the grey powdery substance in? Explain your answer. [1]

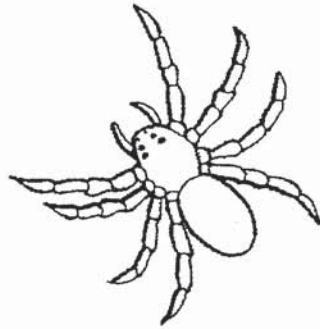
- (b) State two other conditions that are necessary for the grey powdery substances to grow? [1]

- (c) Which group of living things does the grey powdery substance belong to? [1]

29. Ray found two organisms in a park and concluded that they were both insects. His teacher told him that his conclusion was incorrect.



organism A



organism B

(a) Give two reasons to explain why Ray's conclusion is incorrect.

[2]

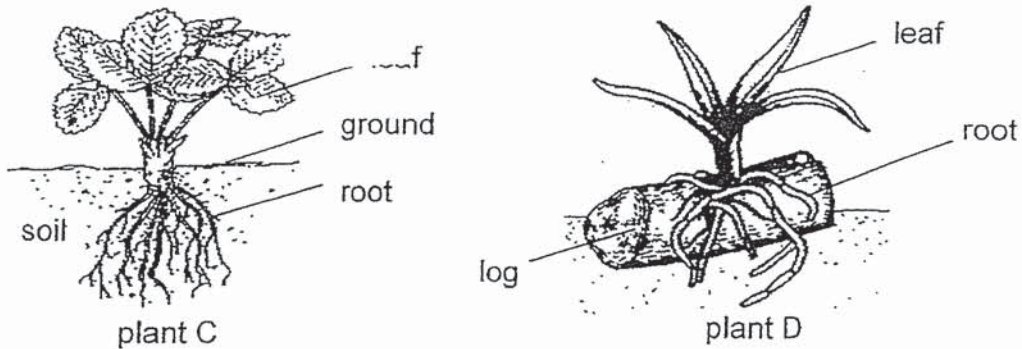
Reason 1:

Reason 2:

(b) Organisms A and B have a hard outer covering. How does this hard outer covering help the organisms?

[1]

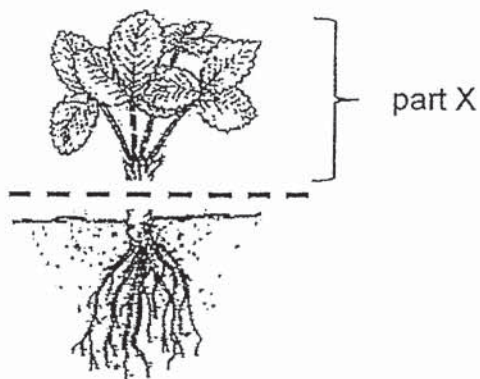
30. The diagram below shows plants C and D.



(a) Based on the diagram, state the difference between where the roots of plants C and D are found. [1]

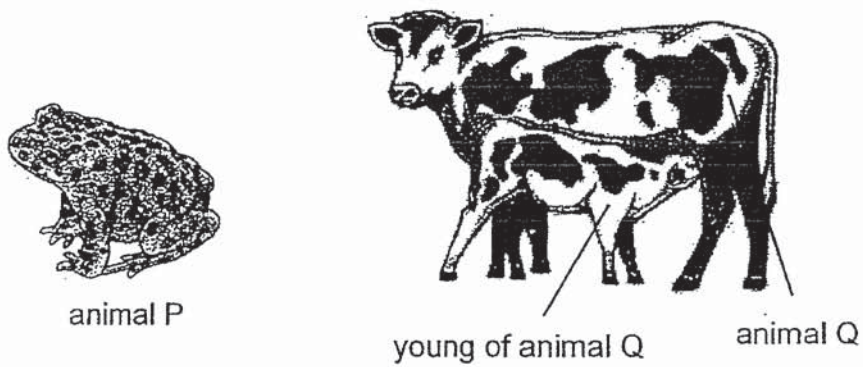
(b) Jane observed there were no flowers growing on plant C and concluded that it is a non-flowering plant. Is Jane correct? Explain your answer. [1]

Jane pulled plant C by the leaves and found that the plant broke off at the stem as shown below.



(c) What will happen to part X of plant C after a few days? Explain your answer. [1]

31. The pictures below shows animals P and Q.



(a) State one difference in the outer covering of animals P and Q. [1]

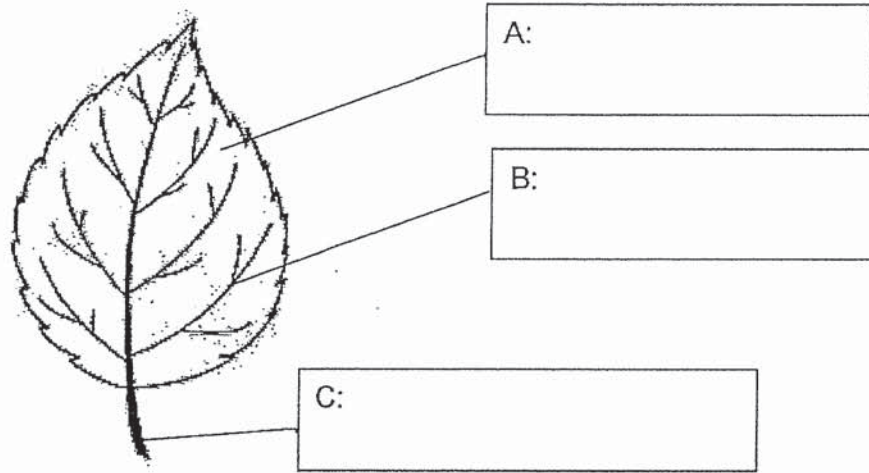
(b) Which animal group does animal Q belong to? [1]

(c) Based on your answer in (b), state one characteristic of the animal group that is shown in the picture. [1]

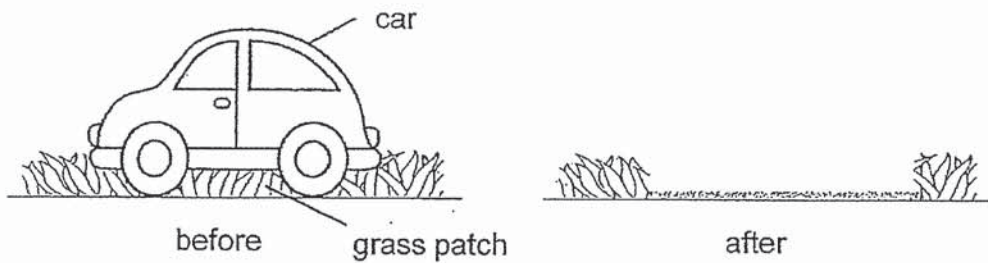
32. The diagram below shows a leaf.

(a) Identify parts A, B and C.

[3]



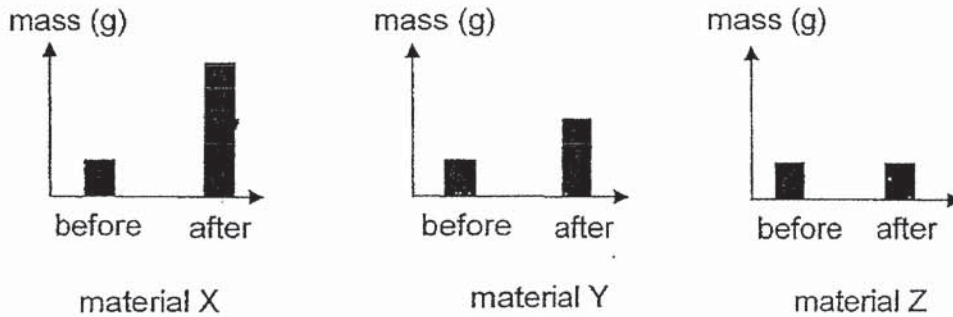
Latifah parked her car on a grass patch in her garden. After a few weeks, she removed her car. She observed that the grass patch under the car had turned brown and died.



(b) Based on her observation, explain why the grass patch under the car had died.

[1]

33. Sathiya set up an experiment to find out which materials X, Y or Z absorbs the most water. She weighed each material before and after leaving them in a basin of water for a minute. She recorded the results in the graph below.



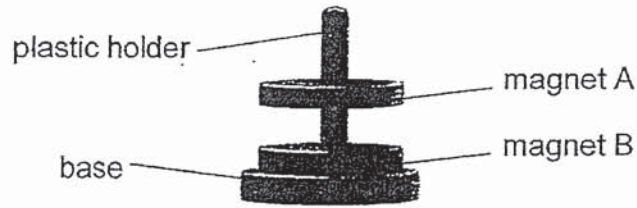
(a) Based on the results above, which material X, Y or Z is waterproof? Explain your answer. [1]

(b) Based on the results above, which material is the most suitable for making a hand towel? Explain your answer. [1]

(c) For the experiment to be fair, tick (✓) the variables that should remain the same. [2]

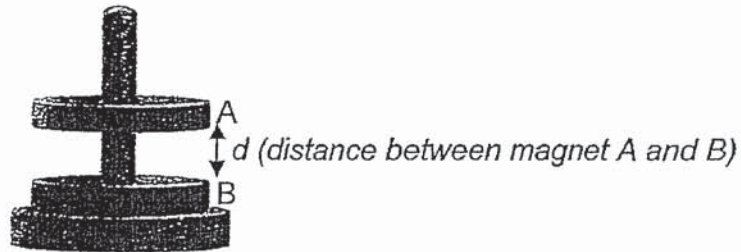
Variables	Tick (✓)
type of materials	
thickness of materials	
amount of water in the basin at the start of the experiment	

34. Amy placed two ring magnets A and B through a plastic holder shown below.



- (a) Explain why magnet A was floating above magnet B. [2]

Amy measured distance d at the start of the experiment. She dropped magnet A onto the ground 5 times and placed magnet A through the plastic holder in the same way. She then measured distance d again and repeated the experiment. She recorded the results in the table below.



Number of times magnet A was dropped onto the ground	Distance d (cm)
0	7
5	6
10	5
15	4
20	?

- (b) Based on the results in the table, what is the relationship between the number of times magnet A was dropped and its magnetic strength? [1]

- (c) Based on the table, what could be distance d after magnet A was dropped 20 times? [1]

END OF BOOKLET B

ANSWER KEY

YEAR : 2019
LEVEL : PRIMARY 3
SCHOOL : CHIJ ST NICHOLAS GIRL'S SCHOOL
SUBJECT : SCIENCE
TERM : EOY

SECTION A

Q1	3	Q2	4	Q3	2	Q4	4	Q5	4
Q6	2	Q7	3	Q8	2	Q9	1	Q10	1
Q11	3	Q12	1	Q13	2	Q14	3	Q15	3
Q16	4	Q17	4	Q18	2	Q19	4	Q20	1
Q21	1	Q22	1	Q23	2	Q24	3		

SECTION B

- Q25 (a)C
(b) B
(c) F
(d) D
(e) A
(f) E

Q26 (a) Water from the undigested food.

Digested food into the bloodstream.

(b) They both have digestive juices which help to break down food into simpler substances.

Q27 (a) Both moss and the banana plant make their own food.

(b) The banana plant bears flowers while the moss does not bear flowers.

Q28 (a) Box Q. As Aishah did not put a packet of silica gel in Box Q, so there was moisture. Hence mould needs moisture to grow.

(b) air and warmth.

(c) Fungi

Q29 Reason 1 : Organism B has 8 legs while insects have 6 legs.

Reason 2 : Organism B has 2 body parts while an insect has 3 body parts.

(b) It protects the organisms soft body.

Q30 (a) The roots of plant C are found underground while the roots of plant D are found above the ground.

(b) No. As some plants only bloom when the seasons are right.

(c) Plant C will die as it has no roots to absorb water for the plant.

Q31 (a) Animal P has moist skin while animal Q has fur.

(b)Mammals

(c)Mammals produce milk to feed their young.

Q32 (a) A : leaf blade

B : leaf vein

C : leaf stalk

(b)The grass under the car could not receive sunlight to make food so it died.

Q33 (a)Material Z. The mass of material Z remains the same before and after placed in basin of water showing that I did not absorb any water.

(b)Material X.As material X absorbed the most amount of water.Hence, a hand towel needs to absorb the most amount of water so your hands will be dry.

(c)

Variables	Tick (✓)
type of materials	
thickness of materials	✓
amount of water in the basin at the start of the experiment	✓

Q34 (a)The like poles of magnet B and A are facing each other so they are repelling each other.

(b)The greather the number of times magnet A was dropped, the weaker the magnetic strength of the magnet.

(c)3

2
END