

Anglo-Chinese School (Junior)



BITE-SIZED ASSESSMENT 4 (2018)

PRIMARY 3

SCIENCE

Wednesday

29 August 2018

30 minutes

Name: _____ () Class: 3.()

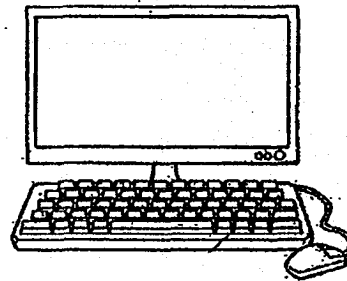
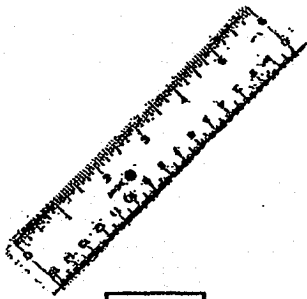
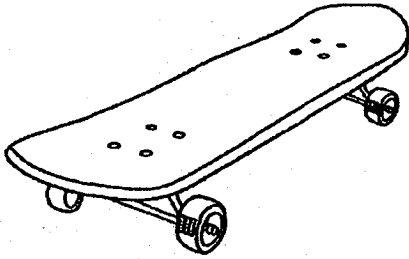
INSTRUCTIONS TO PUPILS

- 1 Do not turn over the pages until you are told to do so.
- 2 Follow all instructions carefully.
- 3 There are 7 questions in this booklet.
- 4 Answer ALL questions.
- 5 The marks are given in the brackets [] at the end of each question or part question.

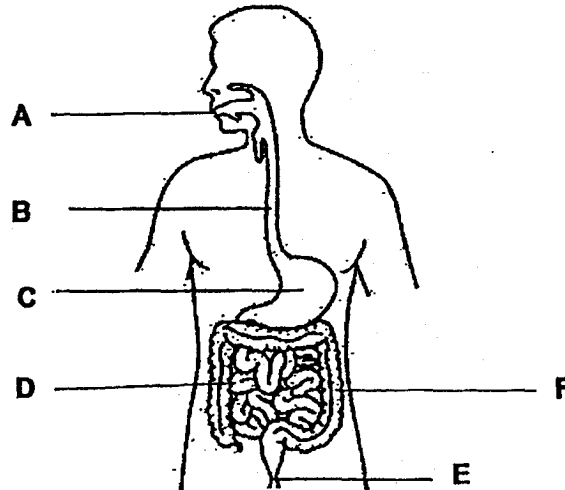
Question Paper	Possible Marks	Marks Obtained
Total	10	

Answer questions 1 to 7. The number of marks available is shown in the brackets [] at the end of each question.

1. Which one of the following is/are systems? Place a tick (✓) in the correct box(es). [1]



2. The diagram below shows the human digestive system.



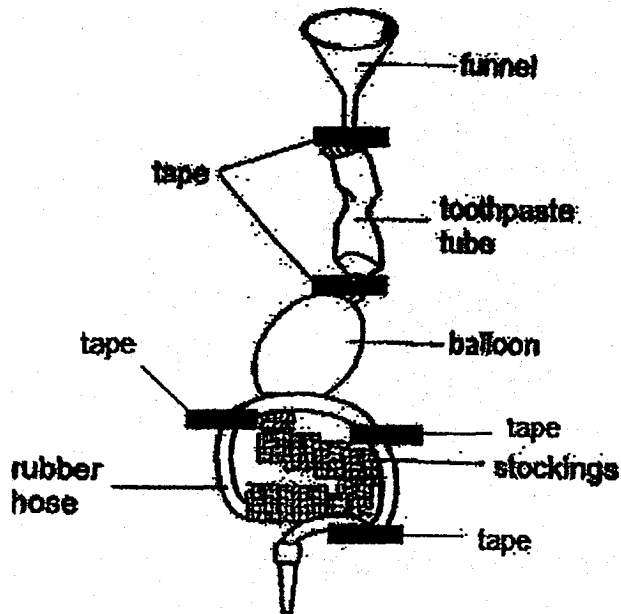
a) Where (A, B, C, D, E or F) does digestion start and end? [1]

Start: _____

End : _____

b) Explain clearly what happens to the digested food. [1]

3. Justin made a model of the digestive system as shown in the picture below. Tape was used to hold the model together.



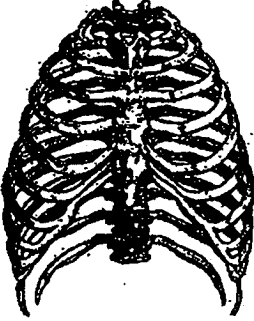

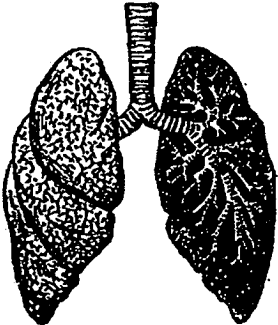

What does each part of the model represent?

[1]

Parts of the model	Parts of the digestive system
Toothpaste tube	
Stockings	Small intestine
Balloon	
Rubber Hose	
Funnel	

4. (a) Match the body parts to the correct body system.

[1]

Body System	Body Part
	
Skeletal System	
	
Respiratory System	

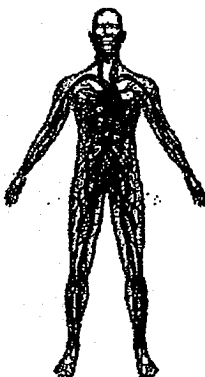
- b) State the functions of the skeletal system and the respiratory system. [1]

Skeletal System: _____

Respiratory System: _____

5. Which two main systems work together so that the human body can bend, stretch and move? [1]

6. Study the human body system below.

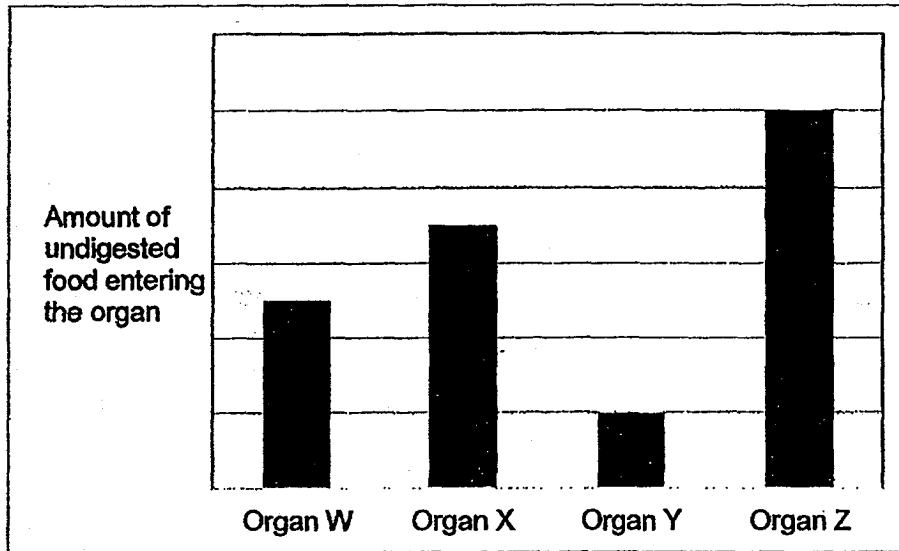


What does the circulatory system carry to all parts of the body and away from different parts of the body? [2]

Carries to all parts of the body: _____

Carries away from different parts of the body: _____

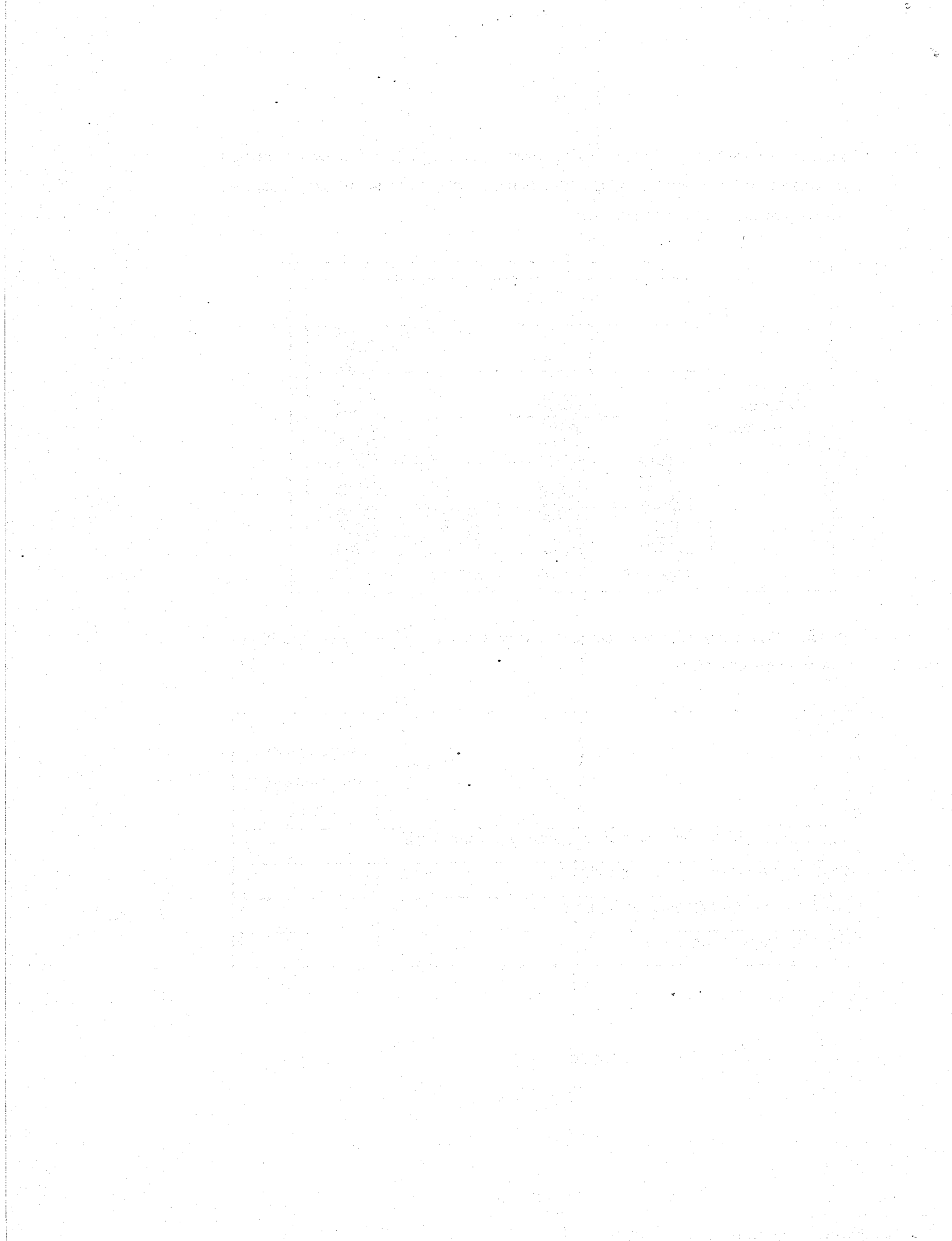
7. Laura ate a plate of chicken rice during recess. The graph below shows the amount of undigested food entering the mouth, stomach, small intestine and large intestine. The organs are not arranged in order.



Which of the following conclusions is/are true? Put a tick(✓) in the box beside the statements which is/are true. [1]

Statement	Put a tick(✓) if the statement is true.
Organ W has the most amount of undigested food entering it.	
Organ X is most likely to be the stomach.	
Food is completely digested in Organ Y.	
Digestion starts at Organ Z.	

END OF PAPER



EXAM PAPER 2018 (P3)

SCHOOL : ACS

SUBJECT : SCIENCE

TERM : CA2

Q1)

Q2) a) Start : A

End : D

b) The digested food got absorbed into the walls of the small intestine and into the blood stream.

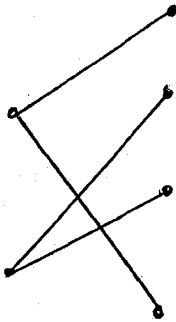
Q3) Toothpaste tube – gullet

Balloon – stomach

Rubber Hose – large intestine

Funnel – mouth

Q4) a)



b) Skeletal system : Shapes the body, supports the body and protects the organs.

Respiratory system : It allows gaseous exchange.

Q5) Skeletal system and the muscular system.

Q6) Carries to all parts of the body : digested food , oxygen , water

Carries away from different parts of the body : waste material

Q7) Organ X is most likely to be the stomach , Digestion starts at Organ Z.

