

# Anglo-Chinese School (Junior)



## SEMESTRAL ASSESSMENT 1 (2018)

PRIMARY 3

SCIENCE

BOOKLET A

Friday

11 May 2018

1 hr 45 min

Name: \_\_\_\_\_ (    )    Class: 3.(    )

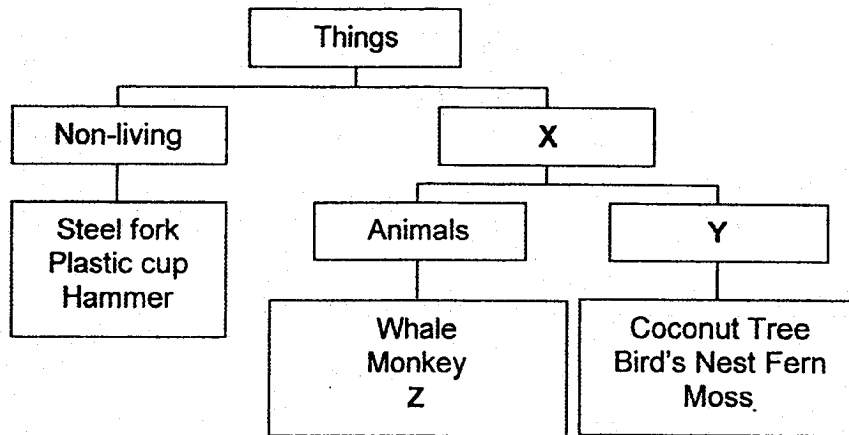
### INSTRUCTIONS TO PUPILS

- 1 Do not turn over the pages until you are told to do so.
- 2 Follow all instructions carefully.
- 3 There are 28 questions in this booklet.
- 4 Answer ALL questions.
- 5 Shade your answers in the Optical Answer Sheet (OAS) provided.

**Booklet A (56 marks)**

For each question from 1 to 25, four options are given. One of them is the correct answer. Make your choice (1, 2, 3 or 4). Shade your answer on the Optical Answer Sheet. (28 x 2 marks)

1. The classification chart below shows how some things were classified according to certain characteristics.



Which of the following clearly represents letters X, Y and Z?

	X	Y	Z
(1)	Living	Can reproduce	Water lily
(2)	Cannot die	Plants	Banana Tree
(3)	Living	Plants	Shark
(4)	Cannot die	Can reproduce	Cat

2. Evelyn has classified some objects as shown below.

Group A	Group B
White board	Skipping ropes
Students	Hockey sticks
Chairs	Tennis balls

Which of the following are the correct headings for Group A and Group B?

	Group A	Group B
(1)	Found in classroom	Found in PE store room
(2)	Non-living	Living
(3)	Found in living room	Found in toilet
(4)	Living	Non-living

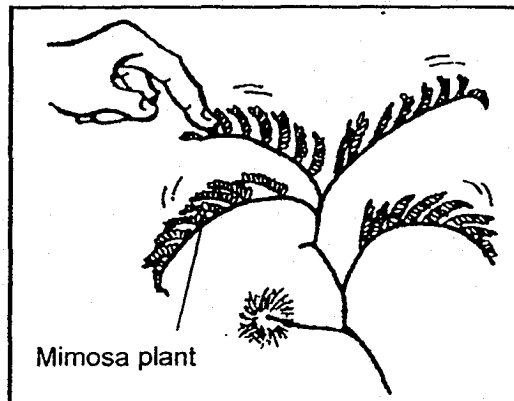
3. Study the two groups of things below.

Group P	Group Q
Mushroom	Hibiscus plant
Bacteria	Rose plant
Rabbit	Moss

Which one of the following is true about the two groups of things?

	Group P	Group Q
(1)	Can grow	Cannot grow
(2)	Can reproduce	Cannot reproduce
(3)	Cannot make its own food	Can make its own food
(4)	Cannot respond to changes around them	Can respond to changes around them

4. Peter went to the field and saw some mimosa plants. After he had gently touched the leaves of the mimosa plant, the leaves folded inwards immediately.



Which of the following characteristics is shown when the leaves of the mimosa plant folded inwards?

- (1) Living things are shy.
- (2) Living things can die.
- (3) Living things can respond to changes around them.
- (4) Living things can move from one place to another by themselves.

5. Some animals are grouped as shown in the classification table below.

Group R	Group P
Horse	Owl
Sheep	Snake
Lion	Seal

These animals are grouped according to \_\_\_\_\_.

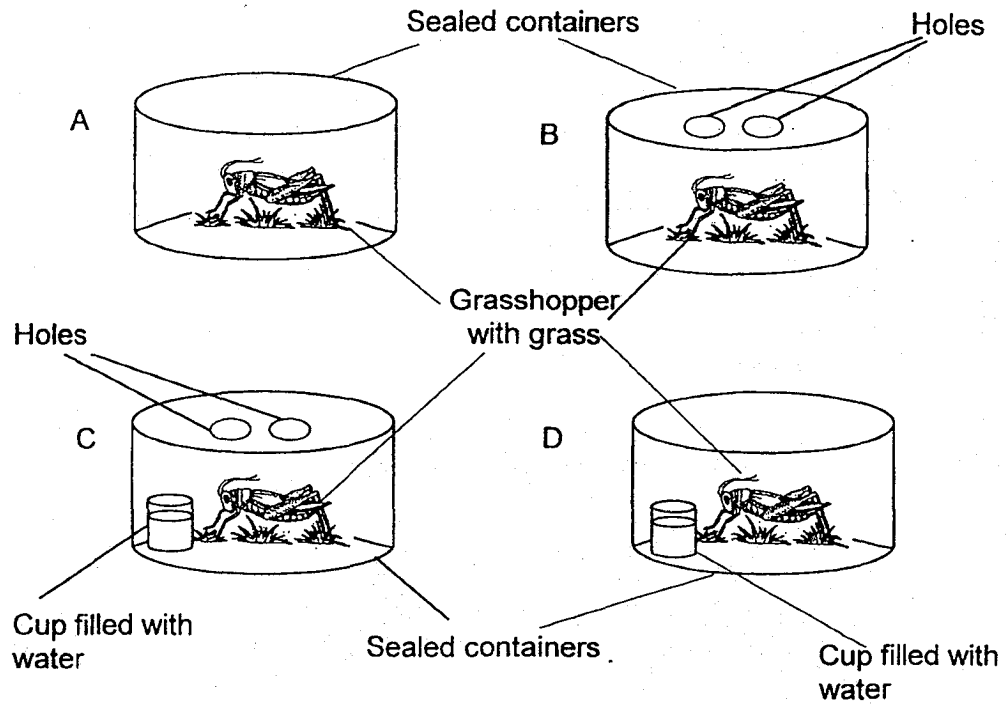
- (1) what they eat
  - (2) where they live
  - (3) their outer covering
  - (4) how they move about
6. The table below shows the characteristics of things A and B.

Things	Does it need air?	Can it grow?	Can it fly?
A	No	No	Yes
B	Yes	Yes	Yes

Which one of the following correctly identifies A and B?

	A	B
(1)	Bird	Airplane
(2)	Helicopter	Airplane
(3)	Butterfly	Helicopter
(4)	Airplane	Bird

7. Peter wants to conduct an experiment to find out if living things need water to survive.



Which of the two set-ups above should he use to conduct his experiment?

- (1) A and B
- (2) A and C
- (3) B and C
- (4) B and D

8. Which one of the following examples does not show the characteristics of a living thing?

- (1) A dog has given birth to 5 puppies.
- (2) A boy is now 5 cm taller than he was last year.
- (3) A school flag is flapping when the wind blows.
- (4) A girl moved her hand away after touching a hot kettle.

9. Remus has written a riddle that describes a plant. Read the riddle below carefully.

"I grow on a tree.  
I cannot bear fruits.  
I reproduce from spores.  
What am I?"

The riddle best describes a \_\_\_\_\_.

- (1) Mango plant  
(2) Cactus plant  
(3) Balsam plant  
(4) Staghorn fern
10. How is the bird's nest fern different from the rose plant?



Bird's nest fern



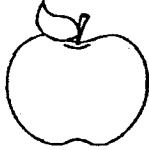

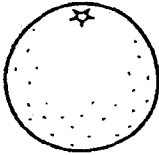
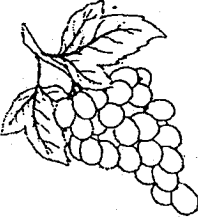


Rose plant

- A It has leaves.  
B It reproduces from spores.  
C It cannot make its own food.
- (1) A only  
(2) B only  
(3) A and C only  
(4) B and C only
11. Mrs Kang told her students to observe some plants. She then asked the students to find out where the spores were found. Four students have given their responses as shown in the table below.

Whose response is correct?

	Name of student	Where spores are found
(1)	Alan	In the roots
(2)	Beth	On the stem
(3)	Cathy	On the leaf
(4)	Daniel	On the fruit

12. Some fruits have been classified in the following groups.

Group A	Group B
 <p data-bbox="596 451 692 478">Fruit A</p>	 <p data-bbox="1102 437 1198 464">Fruit E</p>
 <p data-bbox="587 689 683 716">Fruit B</p>	 <p data-bbox="1098 658 1193 685">Fruit F</p>
 <p data-bbox="587 928 683 955">Fruit C</p>	 <p data-bbox="1098 934 1193 961">Fruit G</p>

Based on your observation, which fruit was classified wrongly?

- (1) A  
 (2) C  
 (3) E  
 (4) G
13. Ben, Helen, Ray and Janet were having a discussion on flowering and non-flowering plants and made the following statements.

Ben: Flowering plants only grow on land.

Helen: Flowering plants can reproduce by seeds.

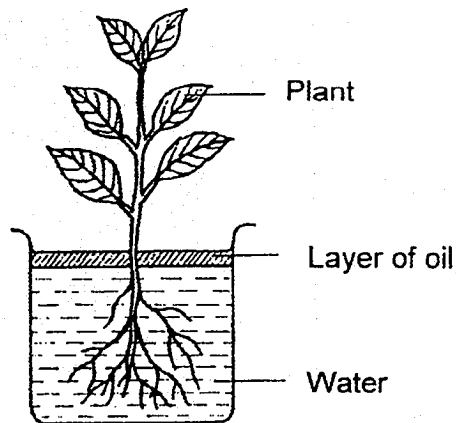
Ray: Non-flowering plants cannot produce fruits.

Janet: Non-flowering plants cannot respond to changes around them.

Whose statements are correct?

- (1) Ben and Ray  
 (2) Ben and Janet  
 (3) Helen and Ray  
 (4) Helen and Janet

14. Kenneth placed a plant in a beaker of water and left it near a window. He then added a layer of oil on the surface of the water.



What did Kenneth observe after 5 days?

- (1) The plant wilted and died.
  - (2) The plant lost all its roots.
  - (3) The water level in the beaker decreased.
  - (4) The water level in the beaker remained the same.
15. One morning, Leroy observed that the healthy banana tree in his garden did not have any flowers. What could be the most likely possible reason for his observation?



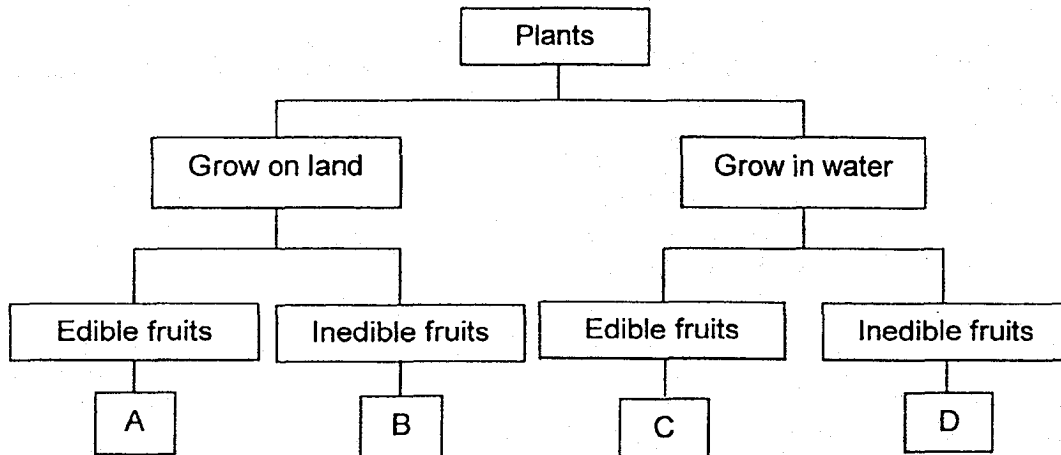
- (1) The banana plant is a non-flowering plant.
- (2) The banana plant only produces fruits but not flowers.
- (3) The banana plant has flowers that only appear at night.
- (4) The banana plant only bears flower at a specific time of the year.



16. The following table gives information on four plants, W, X, Y and Z, based on two characteristics. A tick (✓) shows that the plant has the characteristic.

Characteristics	W	X	Y	Z
Has fruits that are edible		✓		✓
Grows on land	✓			✓

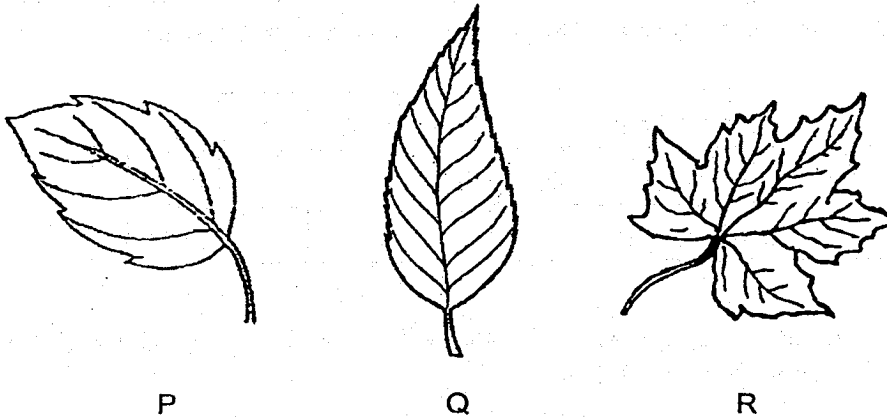
From the information above, in which group, A, B, C or D, do plants W and Z belong in the following classification chart?



	Plant W	Plant Z
(1)	D	B
(2)	B	A
(3)	C	D
(4)	A	C

17. Which of the following statements about flowering plants is true?
- (1) Only plants with flowers can make their own food
  - (2) Only plants with green leaves can make their own food.
  - (3) Plants with leaves of any colours can make their own food.
  - (4) Plants that reproduce from spores cannot make their own food.

18. The diagram below shows three leaves, P, Q and R.

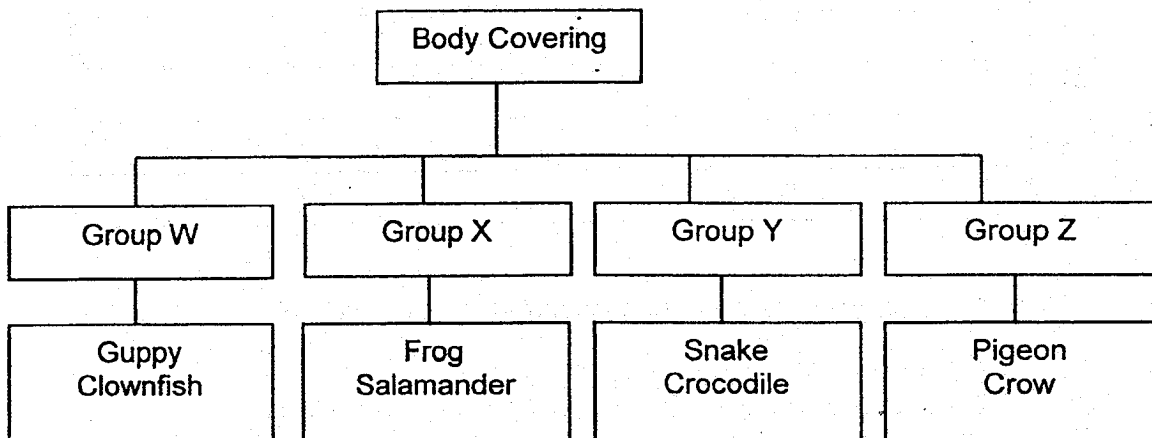


Based on your observation, which of the following description(s) of the leaves is/are correct?

- A They are palm-shaped.
- B They are heart-shaped.
- C They have jagged edges.
- D They have smooth edges.

- (1) C only
- (2) A and C only
- (3) A, B and D only
- (4) B, C and D only

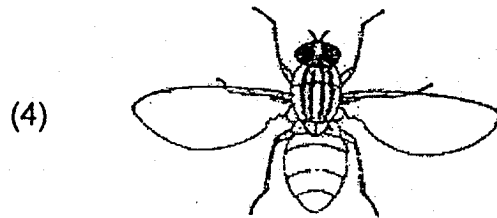
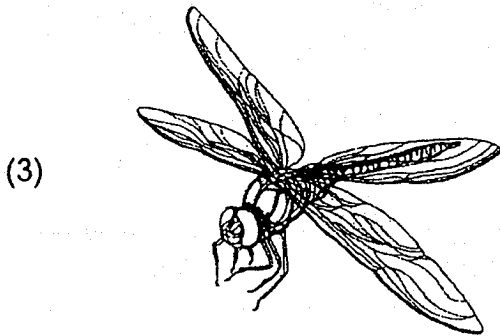
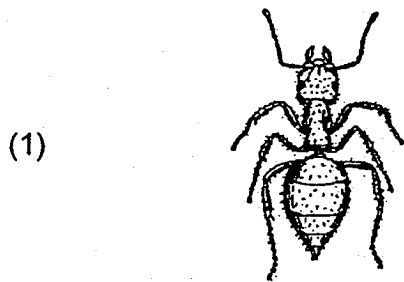
19. Study the classification chart below.



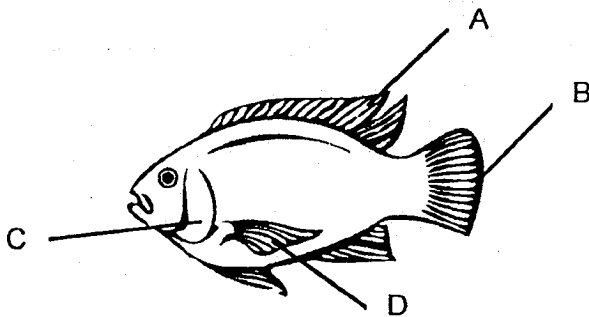
In which group does a toad belong to?

- (1) Group W
- (2) Group X
- (3) Group Y
- (4) Group Z

20. Which of the following is not an insect?



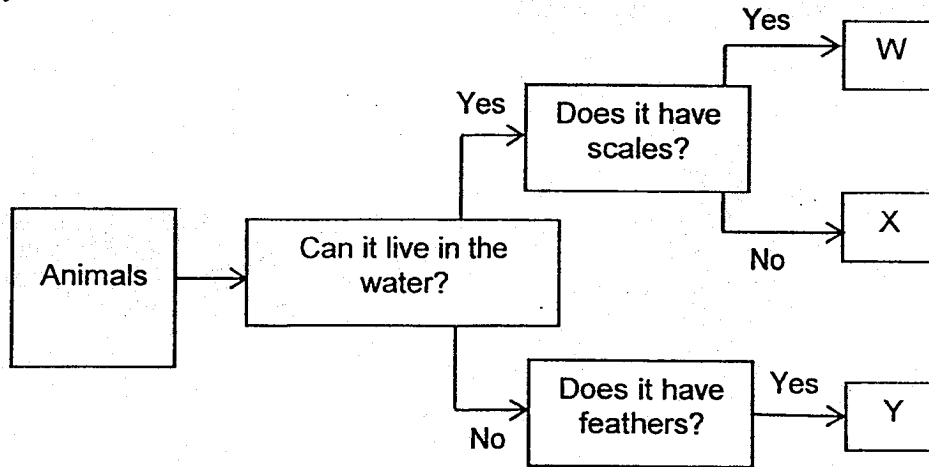
21. Study the organism below.



Which of the parts shown above help the organism to swim?

- (1) B and C only
- (2) A and D only
- (3) A, B and D only
- (4) All of the above

22. Study the flowchart below.



Which one of the following correctly represents the group of animals W,X and Y belong to?

	Bird	Amphibian	Fish
(1)	Y	X	W
(2)	W	Y	X
(3)	Y	W	X
(4)	X	Y	W

23. The picture shows an ostrich.



- A It is a bird as it has a beak.
- B It is a bird as it has feathers.
- C It is not a bird as it cannot fly.
- D It is not a bird as it can run very fast.

Which of the above statements are true of an ostrich?

- (1) D only
- (2) A and B only
- (3) C and D only
- (4) A, B and C only.

24. Several children observed Animal X and made the following statements.

Andy: It lays eggs

Alan: It has a long tail.

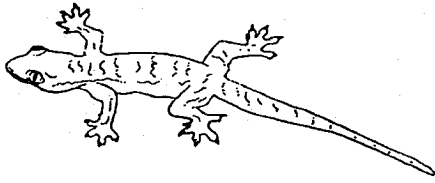
John: It has moist skin.

Mark: It can also breathe with lungs.

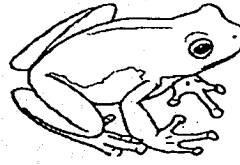
Which animal group does Animal X most likely belong to?

- (1) Fish
- (2) Mammal
- (3) Reptile
- (4) Amphibian

25. Study the animals below.



House Lizard

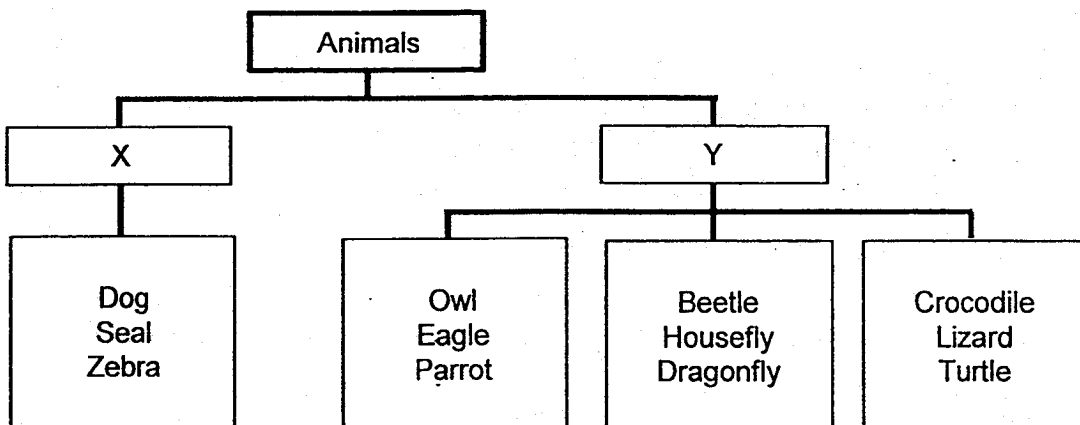


Frog

Which of the following is true for house lizard but **false** for frog?

- (1) Can live in water only.
- (2) Reproduce by laying eggs.
- (3) Have dry skin covered with scales.
- (4) Have a constant body temperature.

26. Study the classification chart below.



Which of the following can be the sub-headings X and Y be?

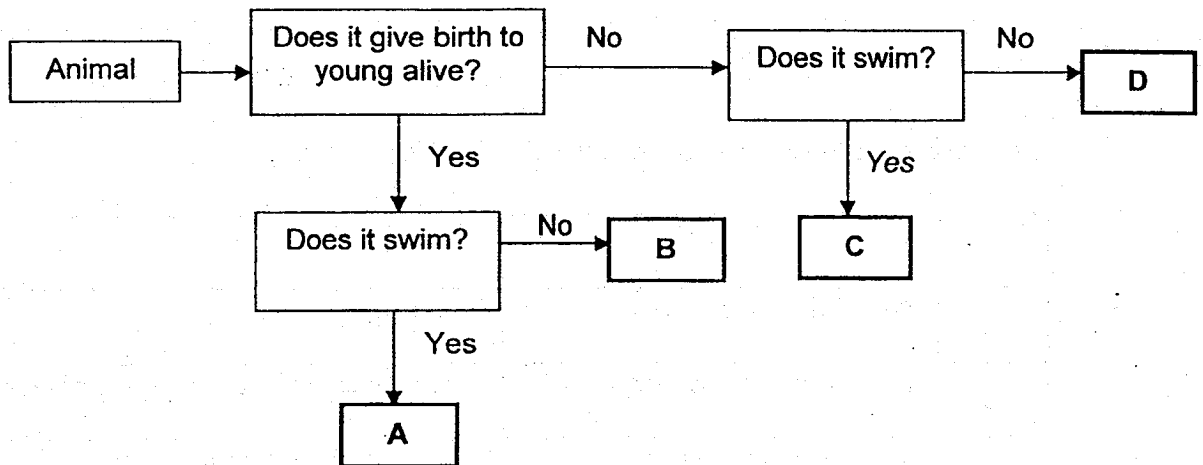
	X	Y
A	Give birth to young alive	Lay eggs
B	Have an outer covering of hair	Do not have an outer covering of hair
C	Have a constant body temperature	Do not have a constant body temperature
D	Suckle their young	Do not suckle their young

- (1) B and C only
- (2) C and D only
- (3) A, B and D only
- (4) All of the above.

27. Jason found an animal in a garden and he wanted to find out if it is an insect. What must he do to ensure that it is an insect?

- (1) Measure the length of the animal.
- (2) Find out whether the animal has wings.
- (3) Observe whether the animal lays eggs.
- (4) Find out the number of body parts the animal has.

28. Study the flow chart below.



Which of the following letters represent a penguin?

- (1) A
- (2) B
- (3) C
- (4) D



# Anglo-Chinese School (Junior)



## SEMESTRAL ASSESSMENT 1 (2018)

PRIMARY 3

SCIENCE

BOOKLET B

Friday

11 May 2018

1 hr 45 min

Name: \_\_\_\_\_ ( ) Class: 3.( ) F

### INSTRUCTIONS TO PUPILS

- 1 Do not turn over the pages until you are told to do so.
- 2 Follow all instructions carefully.
- 3 There are 13 questions in this booklet.
- 4 Answer ALL questions.
- 5 The marks are given in the brackets [ ] at the end of each question or part question.

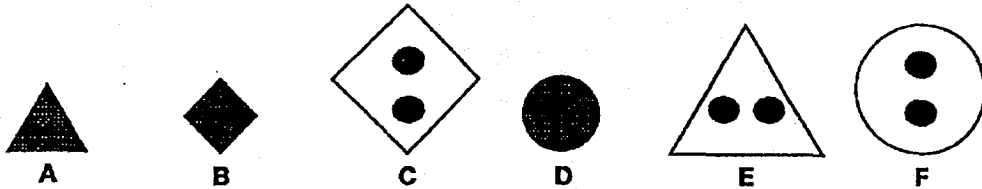
Booklet	Possible Marks	Marks Obtained
A	56	
B	44	
Total	100	

**Booklet B (44 marks)**

For questions 29 to 41, write your answers in this booklet.

The number of marks available is shown in brackets [ ] at the end of each question or part question.

29. Mrs Lee gave six figures, A, B, C, D, E and F, to Jerry as shown below.



- (a) State one characteristic that Jerry could use to classify the 6 figures into 2 groups so that there is an equal number of figures in each group. [1]

---



---

- (b) Mrs Lee asked Jerry to use another characteristic to **regroup** the six figures into 2 groups with an **equal number** of figures in each group. How could Jerry regroup the six figures? Write the letters (A, B, C, D, E and F) in the boxes provided. [2]

Group 1	Group 2
<input type="text"/>	<input type="text"/>
<input type="text"/>	<input type="text"/>
<input type="text"/>	<input type="text"/>

(Go on to the next page)

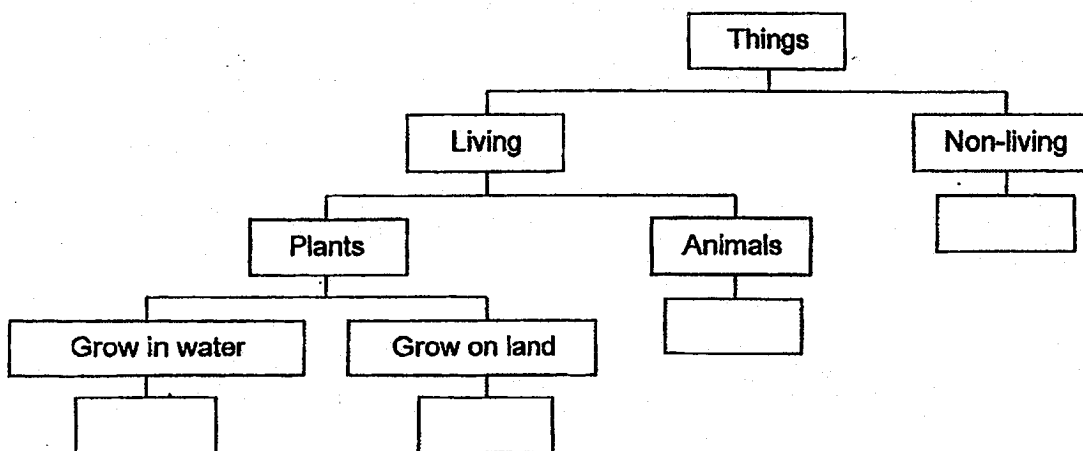
SCORE	3
-------	---

30. The table below gives information about four things based on some characteristics. A tick (✓) shows that the thing has the characteristic.

Characteristic	Thing			
	P	Q	R	S
Needs air, food and water to survive	✓	✓		✓
Can be found inside the pond	✓		✓	✓
Can reproduce and can die	✓	✓		✓
Can make its own food	✓	✓		

- (a) Fill in the boxes with the letter, P, Q, R or S in the classification table below.

[2]



- (b) Name a thing that has the same characteristics as Q.

[1]

---

(Go on to the next page)

SCORE	3
-------	---

31. William observed and classified some things into 2 groups as shown in the table below.

Group X	Group Y
Cockroach	Fork
Elephant	Spoon
Mushroom	Sharpener
Fern	Eraser

Based on the information above, answer the following questions:

- (a) Give suitable headings for Group X and Group Y. [1]

Group X : \_\_\_\_\_

Group Y : \_\_\_\_\_

- (b) Classify the things in Group X in the table below based on the given headings. [2]

Mammal	Insect	Fungi	Plant

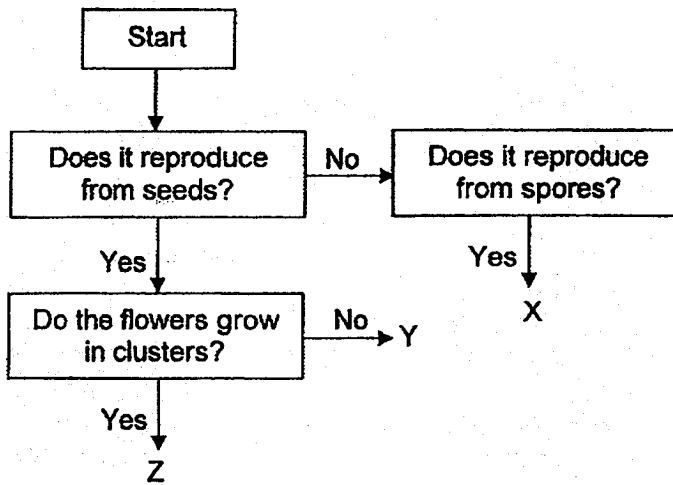
- (c) Help William to classify the objects in Group Y into 2 groups in the table below based on the headings provided. [1]

Found in a pencil case	Found in the kitchen

(Go on to the next page)

SCORE	4
-------	---

32. Study the flow chart which shows the characteristics of some plants.



- (a) Based on the flow chart, state all the characteristics of Z. [1]

---



---

- (b) Based on the flow chart, state a difference between X and Y. [1]

---



---

- (c) The diagram below shows an Ixora plant.



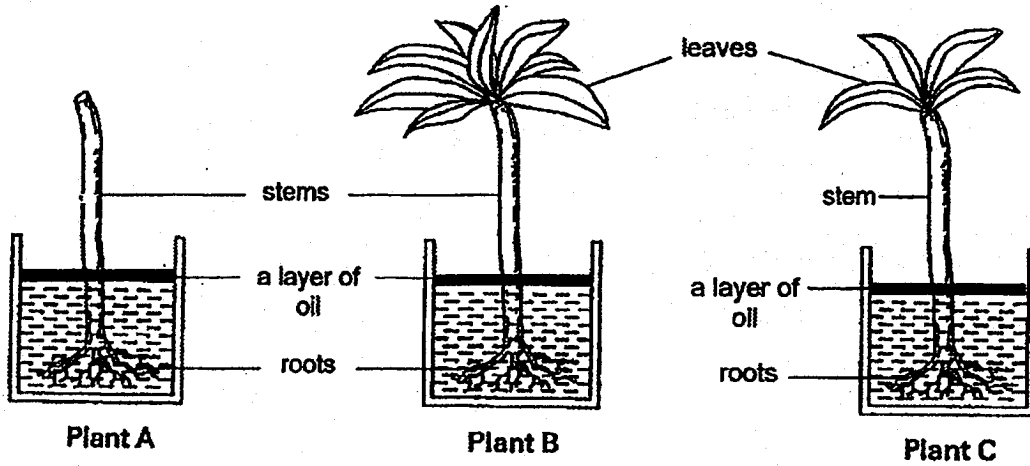
- Which letter, X, Y or Z, in the flow chart above represents the Ixora plant? [1]

---

(Go on to the next page)

SCORE	3
-------	---

33. James used three similar plants, A, B and C, to conduct an experiment. He removed all the leaves from Plant A, and some leaves from Plant C. He then placed each plant in a container filled with 700 ml of water as shown in the diagram below.



After 3 days, James measured the amount of the water in each container. The table below shows the amount of water left in each container.

Amount of water left after 3 days (ml)		
A	B	C
695	520	580

(a) Based on the results in the table, state if each of the following statement is 'True', 'False' or 'Not possible to tell' by putting a tick (✓) in the correct box. [1]

	Statement	True	False	Not possible to tell
(i)	Plant C took in the greatest amount of water.			
(ii)	Plant A took in less water than plant B.			

(Go on to the next page)

SCORE	1
-------	---

33. (b) After 1 week, James recorded his observations of the three plants in the table below.

Plants	Observations
A	It died.
B	All the leaves are still green and healthy.
C	Only a few leaves are still green and healthy.

Why did Plant B grow the best?

[1]

---



---

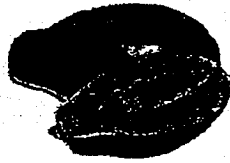
- (c) The table below shows the different conditions in his experiment. Put a tick (✓) in the correct box(es) to indicate the condition(s) he should keep the same in order to carry out a fair experiment. [1]

Conditions	Keep the same
Amount of roots	
Type of plant used	
Location of the plants	
Number of leaves on the plant	

(Go on to the next page)

SCORE	2
-------	---

34. (a) Study the two fruits based on the characteristics given in the table below.



Papaya



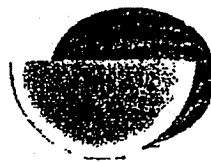
Lychee

Compare the two fruits based on the characteristics given in the table below.

[2]

Characteristics	Papaya	Lychee
Texture of outer covering		
Number of seeds		

(b) The diagram below shows a watermelon.



Watermelon

Which fruit is the watermelon similar to, papaya or lychee? Explain why. [1]

---



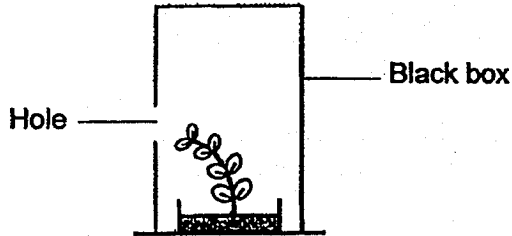
---

(Go on to the next page)

SCORE	3
-------	---



34. (c) Jason placed a plant which was growing upright in a black box that has a hole on the left side. After 2 days, he noticed that the plant grew towards the left as shown in the diagram below.

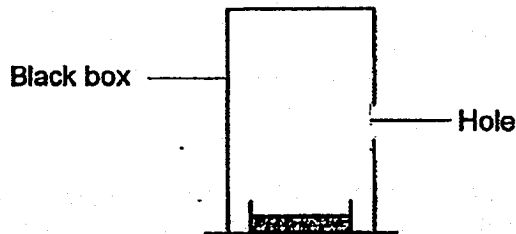


(i) Which characteristic of living things does the experiment show? [1]

---

---

(ii) In the diagram below, draw how the same plant will most likely look like after a few days when he placed it in a black box with a hole on the right. [1]



(Go on to the next page)

SCORE	2
-------	---

35. Nathan planted a seed in a pot with soil and placed it near the window in his room to receive sunlight. He then observed the seed growing into a plant over 8 weeks. He measured and recorded the height of the plant over 8 weeks in the table as shown below.

Week	Height (cm)
1	2
2	3
3	7
4	10
5	13
6	?
7	19
8	22

- (a) Based on the results in the table, what would be the height of the plant in week 6? [1]

The height of the plant in week 6 would be \_\_\_\_\_ cm.

- (b) State the characteristic of living thing that the plant shows. [1]

---



---

- (c) After week 8, Nathan went on a trip with his entire family for 2 weeks and there was no one at home during that time. When Nathan returned home, he observed that the plant withered and died at the same location. What could be a likely reason for the plant to die? [1]

---

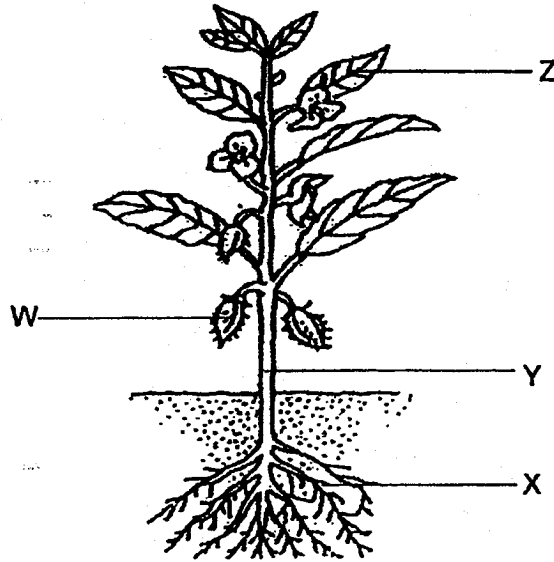


---

(Go on to the next page)

SCORE	3
-------	---

36. The diagram below shows a plant with different parts, W, X, Y and Z.



(a) Names the parts of the plant in the table below.

[2]

Letter	Name of the part of the plant
W	
X	
Y	
Z	

(b) Why are plants important to the survival of other living things?

[1]

---

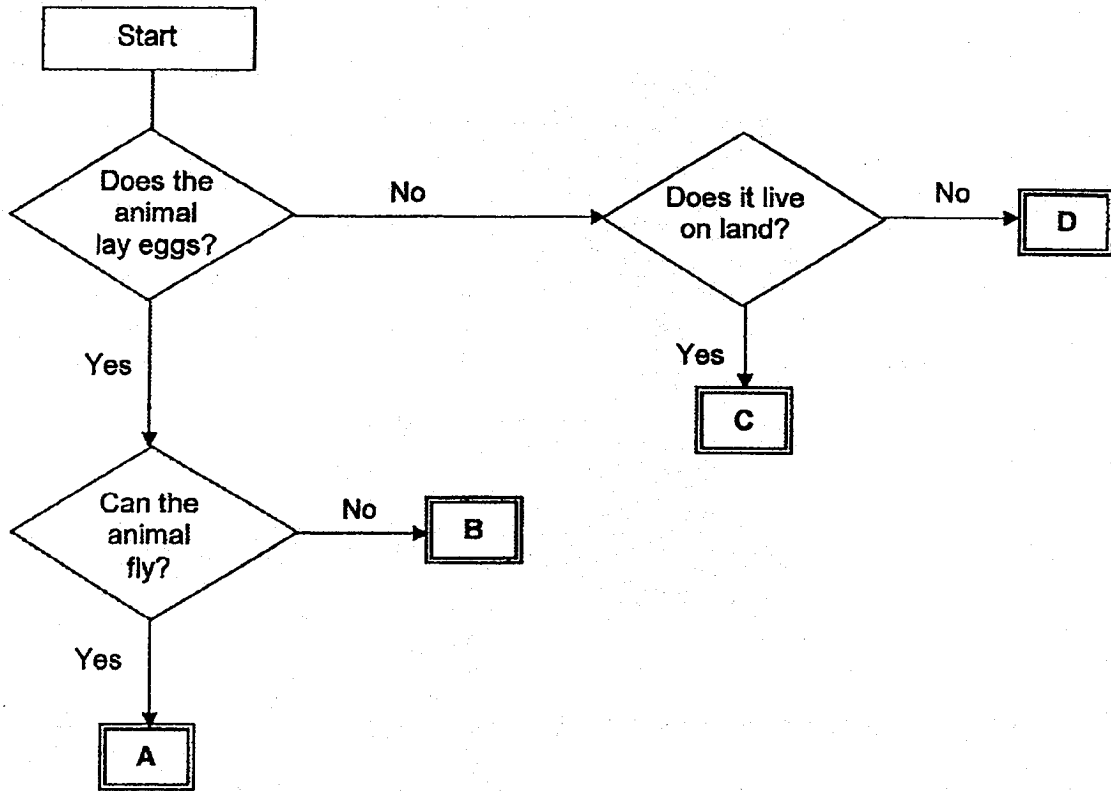


---

(Go on to the next page)

SCORE	3
-------	---

37. Study the flow chart on animals A, B, C and D.



(a) Based on the flow chart, which animal A, B, C or D is most likely an Eagle? [1]

\_\_\_\_\_

(b) Based on the flow chart, state two characteristics of Animal D. [1]

\_\_\_\_\_  
 \_\_\_\_\_

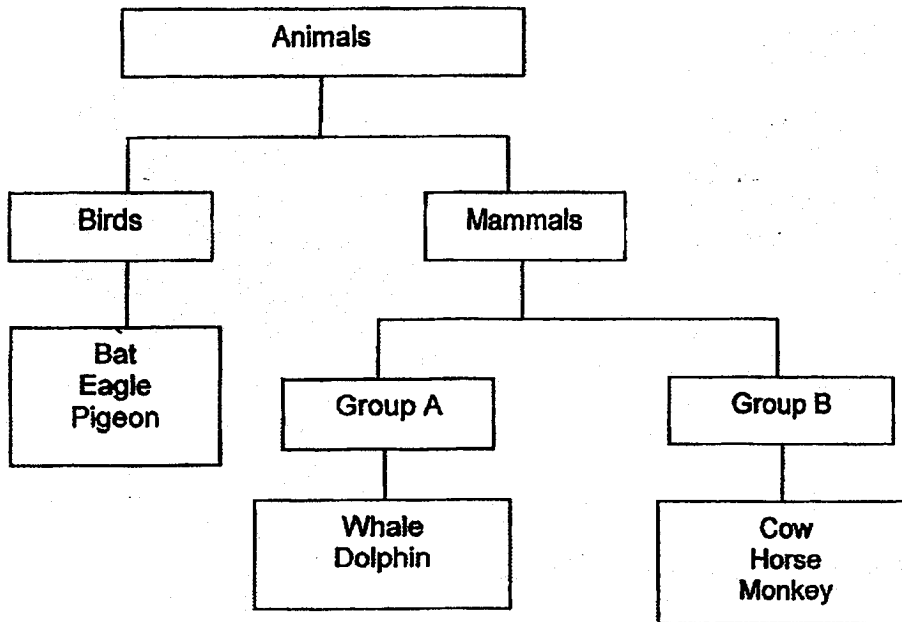
(c) Give an example of animal B. [1]

\_\_\_\_\_  
 \_\_\_\_\_

(Go on to the next page)

SCORE	3
-------	---

38. Study the classification chart given below.



(a) Which one of the animals is classified wrongly? [1]

---



---

(b) Explain clearly based on its characteristics why the animal you chose in (a) is classified wrongly? [Do not compare the animal group they belong to]. [1]

---



---

(c) Give suitable sub-headings for Group A and Group B. [1]

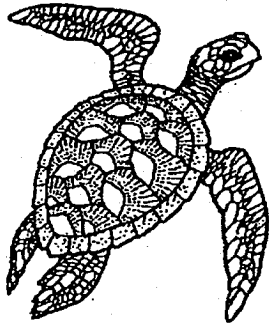
Group A : \_\_\_\_\_

Group B : \_\_\_\_\_

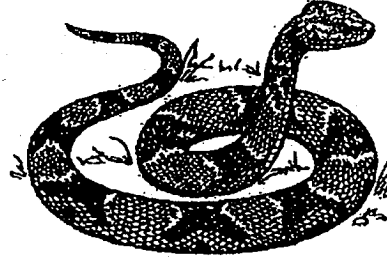
(Go on to the next page)

SCORE	3
-------	---

39. Observe animals E and F carefully.



**Animal E**



**Animal F**

(a) How do animal E and F reproduce? [1]

---

---

(b) Based only on your observation, state one similarity between animal E and animal F. [1]

---

---

(c) Based only on your observation, state one difference between animal E and animal F. [1]

---

---

(Go on to the next page)

SCORE	
	3

40. Study Animal Y below.



**Animal Y**

(a) Based on your observation, which animal group does Animal Y belong to? [1]

---

(b) State two reasons for your answer in part (a). [2]

---



---

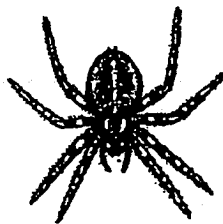
(c) Name the outer covering of Animal Y. State its function. [1]

---



---

(d) The diagram below shows a spider.



Does the spider belong to the same animal group as Animal Y? [1]  
Give a reason for your answer.

---

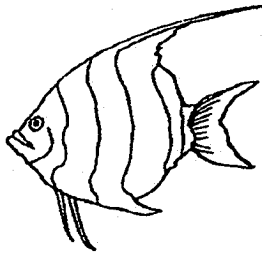


---

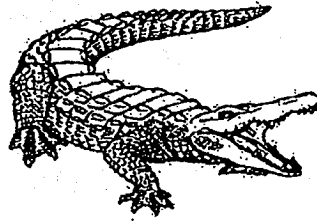
(Go on to the next page)

SCORE	5
-------	---

41. The pictures below show an angelfish and a crocodile.



Angelfish



Crocodile

(a) What animal group do the Angelfish and Crocodile belong to? [1]

Angelfish : \_\_\_\_\_

Crocodile : \_\_\_\_\_

(b) Based on the characteristics of the animal groups that the angelfish and crocodile belong to, state two similarities between the angelfish and the crocodile. [2]

(i) \_\_\_\_\_  
\_\_\_\_\_

(ii) \_\_\_\_\_  
\_\_\_\_\_

End of Paper

SCORE	
-------	--



**EXAM PAPER 2018 (P3)**

**SCHOOL : ACS**

**SUBJECT : SCIENCE**

**TERM : SA1**

Q1	Q2	Q3	Q4	Q5	Q6	Q7	Q8	Q9	Q10
3	1	3	3	4	4	3	3	4	2
Q11	Q12	Q13	Q14	Q15	Q16	Q17	Q18	Q19	Q20
3	4	3	3	4	2	3	1	2	2
Q21	Q22	Q23	Q24	Q25	Q26	Q27	Q28		
3	1	2	4	3	3	4	3		

**Q29) a) They can be grouped by dots or shaded.**

**b) Group 1 : C , E , F**

**Group 2 : A , B , D**

**Q30) a) Grow in water – P    Grow on land – Q**

**Animals – S    Non-living – R**

**b) Bird's nest fern**

**Q31) a) Group X : living things**

**Group Y : Non-living things**

b) Mammal – Elephant    Insect – Cockroach

Fungi – Mushroom    Plant – Fern

c) Found in a pencil case – Sharpener , Eraser

Found in the kitchen – Fork , Spoon

Q32) a) Z reproduce by seeds but does not reproduce by spores.

b) X reproduces by spores but Y reproduces by seeds.

c) Z

Q33) a) (i) False

(ii) True

b) Because it did not have any of its leaves plucked out.

c) Amount of roots , Type of plant used , Location of the plants

Q34) a) Papaya

Texture of outer covering – smooth

Number of seeds – many

Lychee

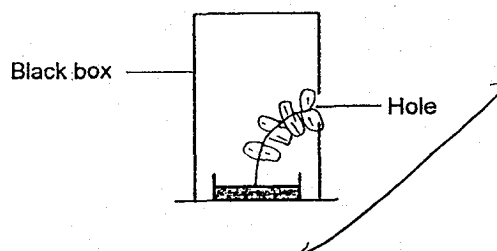
Texture of outer covering – rough

Number of seeds – one

b) Papaya, because it was many seeds and a smooth skin.

c) i) living things respond to changes.

ii)



Q35) a) 16 cm

b) living things grow

c) Because it had not enough water.

Q36) a) W – fruit X – roots Y – stem Z – leaf

b) Because they provided food, shelter, materials and medicine.

Q37) a) Animal A is likely to be an Eagle.

b) Animal D does not lay eggs and does not live on land.

c) snake

Q38) a) Bat

b) Because it does not have feathers.

c) Group A : live in water

Group B : live on land

Q39) a) They reproduce by laying eggs.

b) Both of them have eyes.

c) Animal E has legs but Animal F has no legs.

Q40) a) Animal Y belongs to insects.

b) Because it has three body parts and it can fly.

c) It has a hard outer covering to protect its body.

d) It does not belong to the same animal group as Y because it has two body parts.

Q41) a) Angelfish : fish

Crocodile : Reptiles

b) i) Both of them lay eggs.

ii) Both of them have scales.

