

**CATHOLIC HIGH SCHOOL**  
**SEMESTRAL ASSESSMENT ONE (2018)**  
**PRIMARY THREE**  
**SCIENCE**  
**BOOKLET A**

Name: \_\_\_\_\_ ( )

Class: Primary 3 - \_\_\_\_\_

Date: 11 May 2018

20 questions

40 marks

Total Time for Booklets A and B: 1 hour 15 minutes

**INSTRUCTIONS TO CANDIDATES**

Do not turn over this page until you are told to do so.

Follow all instructions carefully.

Answer all questions.

Shade your answers in the Optical Answer Sheet (OAS) provided.

This booklet consists of 12 printed pages, excluding the cover page.

**Booklet A (20 × 2 marks)**

For each question from 1 to 20, four options are given. One of them is the correct answer. Make your choice (1, 2, 3 or 4). Shade your answer on the Optical Answer Sheet. (40 marks)

- 1 On a rainy day, Sanjay observed that his puppy shivered when the cold wind blew.



puppy

What did Sanjay's observation tell you about living things?

- (1) Living things can grow.
- (2) Living things can reproduce.
- (3) Living things can move around on their own.
- (4) Living things can respond to changes around them.

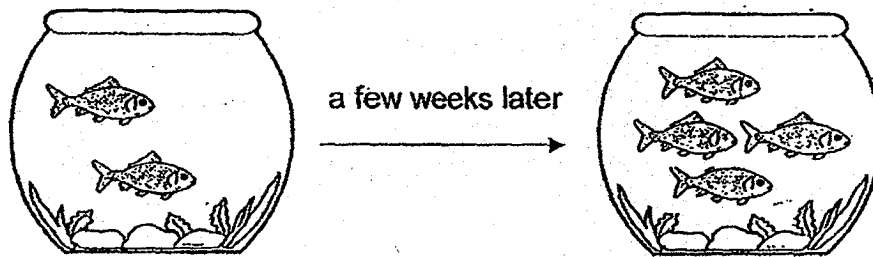
- 2 Study the table below.

Things	
Group A	Group B
chair	crocodile
lunch box	rose plant
G	H

Which of the following represents G and H?

	G	H
(1)	paper	moss
(2)	pencil	train
(3)	butterfly	stone
(4)	mushroom	dog

- 3 Wei Li had two pet fish in her fish tank. A few weeks later, the number of fish in her tank increased.



Which of the following statements best explains why there is an increase in the number of fish?

- (1) Fish grow as it is a living thing.
  - (2) Fish lay eggs to ensure that their own kind will continue to exist.
  - (3) Fish can move on their own to escape from danger and look for food.
  - (4) Fish reproduce to respond to the changes in their surroundings.
- 4 The picture below shows a sunflower and a fern.



sunflower

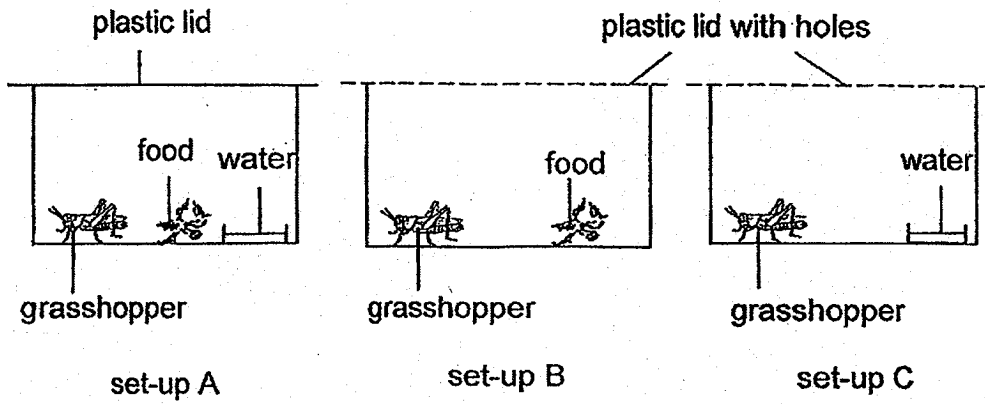


fern

Which of the following statements about the plants is correct?

- (1) Both are flowering plants.
- (2) Both can move freely from one place to another.
- (3) The sunflower reproduces from seeds but the fern reproduces from spores.
- (4) The sunflower makes its own food but the fern does not make its own food.

5 Micheal prepared three set-ups, A, B and C, as shown below.



After a few weeks, he observed that the grasshoppers in all the three set-ups died. Which of the following explains what Micheal observed?

	Set-up A	Set-up B	Set-up C
(1)	no air	no water	no food
(2)	no air	no food	no water
(3)	no food	no air	no water
(4)	no water	no air	no food

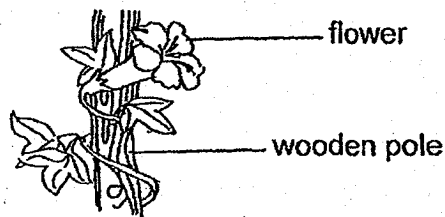
- 6 The table below shows the characteristics of two plants, K and L. A tick (✓) represents that the plant has that characteristic.

Characteristic	Plant	
	K	L
Bears flowers	✓	
Grows on land	✓	✓
Reproduces by spores		✓

Based on the information above, which of the following is the most suitable heading for plants K and L?

	Plant K	Plant L
(1)	Fungi	Fern
(2)	Water plant	Land plant
(3)	Flowering plant	Non-flowering plant
(4)	Non-flowering plant	Fungi

- 7 The picture below shows a plant growing in the garden.

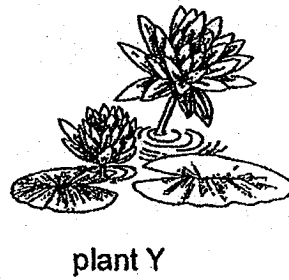
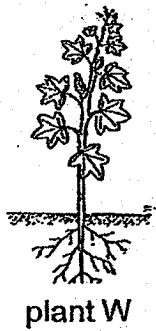
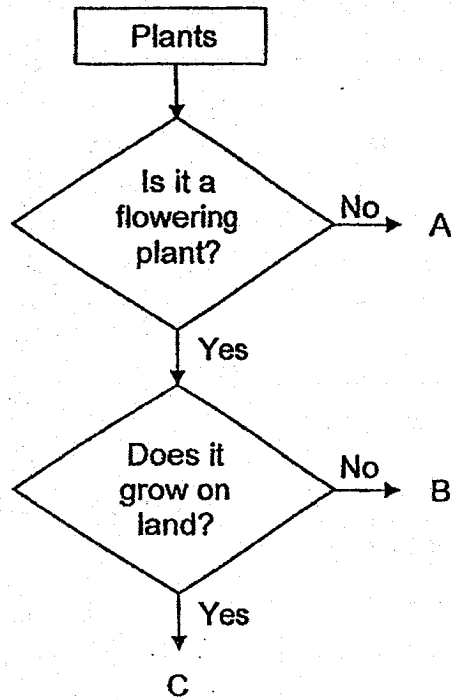


Which of the following statements is/are correct?

- H It is a flowering plant.
- J The plant is a water plant.
- K The plant reproduces from spores.

- (1) H only
- (2) J only
- (3) H and K only
- (4) J and K only

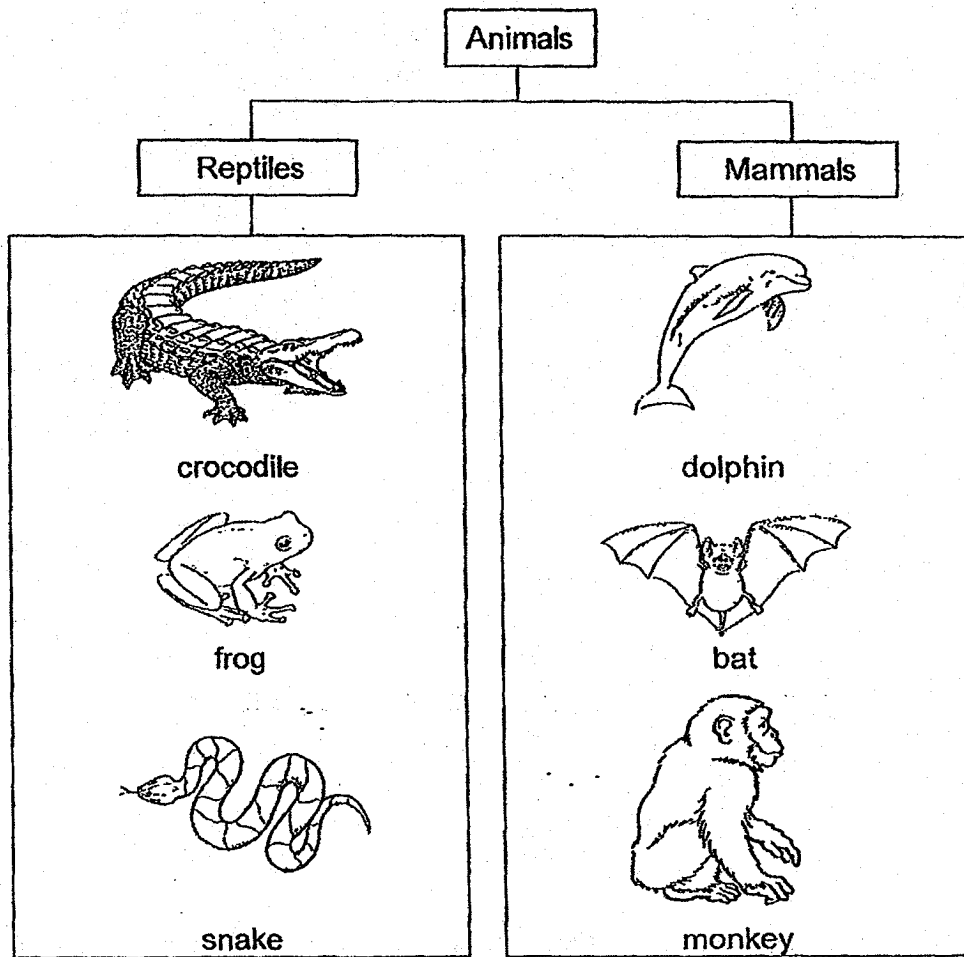
8 Study the flow chart below.



Which of the following represents A, B and C correctly?

	A	B	C
(1)	W	X	Y
(2)	X	Y	W
(3)	Y	W	X
(4)	X	W	Y

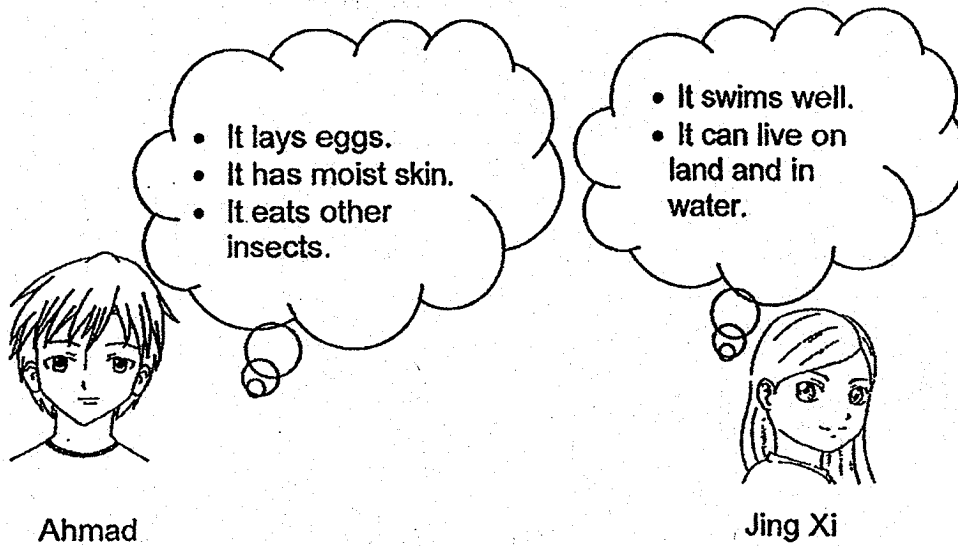
9 The animals below are classified into two groups as shown below.



Which animal above is placed in the wrong group?

- (1) bat
- (2) frog
- (3) dolphin
- (4) crocodile

10 Ahmad and Jing Xi made the following observations about Animal C.



Animal C is most likely to be a/an \_\_\_\_\_.

- (1) fish
- (2) reptile
- (3) mammal
- (4) amphibian

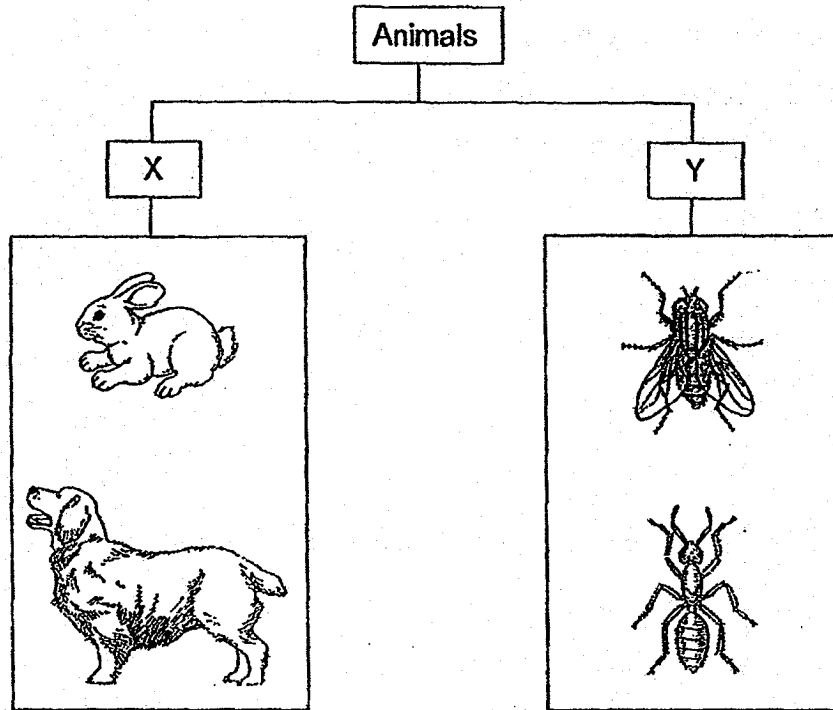
11 Ray caught two animals that can fly. One of them was an insect. Which of the following characteristics can help him identify the insect?

- P Two eyes  
Q Two wings  
R Three body parts  
S Three pairs of legs

- (1) P and Q only
- (2) R and S only
- (3) Q, R and S only
- (4) P, Q, R and S



12 Study the classification chart below.



Which of the following sets of headings best represents X and Y?

	X	Y
(1)	has feelers	does not have feelers
(2)	has six legs	does not have six legs
(3)	does not have three body parts	has three body parts
(4)	does not have wings	has wings

13 Which one of the following statements about fungi is correct?

- (1) They bear fruits.
- (2) They have flowers.
- (3) They reproduce from seeds.
- (4) They cannot make their own food.

14 Which of the following statements about microorganisms are correct?

- A Bacteria cannot reproduce.
- B All microorganisms are harmful.
- C Yeast can be used to make bread.
- D Microorganisms cannot be seen with the naked eye.

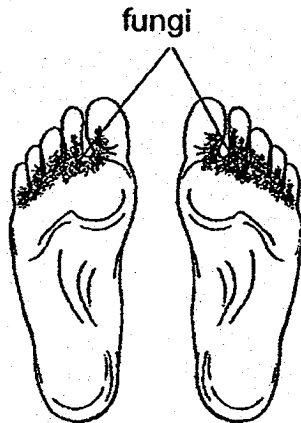
- (1) A and B only
- (2) A and C only
- (3) B and D only
- (4) C and D only

15 Which of the following statements about bacteria are correct?

- A Bacteria can only be found in water.
- B Bacteria have different size and shape.
- C Bacteria only need air and food to grow.
- D Bacteria can only be seen with a microscope.

- (1) A and B only
- (2) A and C only
- (3) B and D only
- (4) C and D only

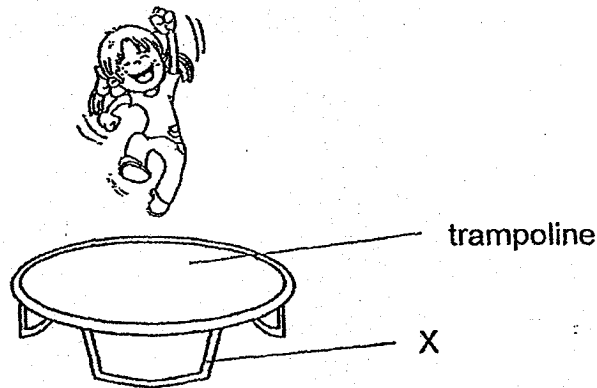
16 Jun Jie has a medical condition in which fungi grow on his feet.



What can he do to reduce the growth of the fungi on his feet?

- (1) Scratch his feet to remove the fungi.
- (2) Rub both his feet together to get rid of the fungi.
- (3) Walk from place to place so that the fungi can drop off.
- (4) Dry his feet thoroughly with a clean cloth when it gets wet.

17 Sally likes to jump and bounce on her trampoline.



Which of the following is the most suitable material and property for making part X?

	Material	Property
(1)	metal	It is strong.
(2)	fabric	It is strong.
(3)	rubber	It is flexible.
(4)	plastic	It is flexible.

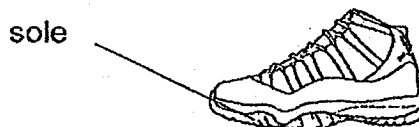
- 18 Kelvin recorded the characteristics of three different materials, P, Q and R, in the table below. A tick (✓) shows that the material has that characteristic.

Materials	Sinks in water	Breaks easily	Flexible
P	✓	✓	
Q	✓		✓
R	✓		

Which of the following represents materials P, Q and R?

	Material P	Material Q	Material R
(1)	metal	ceramic	rubber
(2)	metal	rubber	ceramic
(3)	ceramic	metal	rubber
(4)	ceramic	rubber	metal

- 19 Matthew was choosing a material for the soles of his running shoes.



He listed a few properties below.

- S Flexibility
- T Waterproof
- U Transparency
- V Ability to float in water

Which of the properties are important for him to consider when choosing a material for the soles of his shoes?

- (1) S and T only
- (2) S and V only
- (3) T and U only
- (4) U and V only

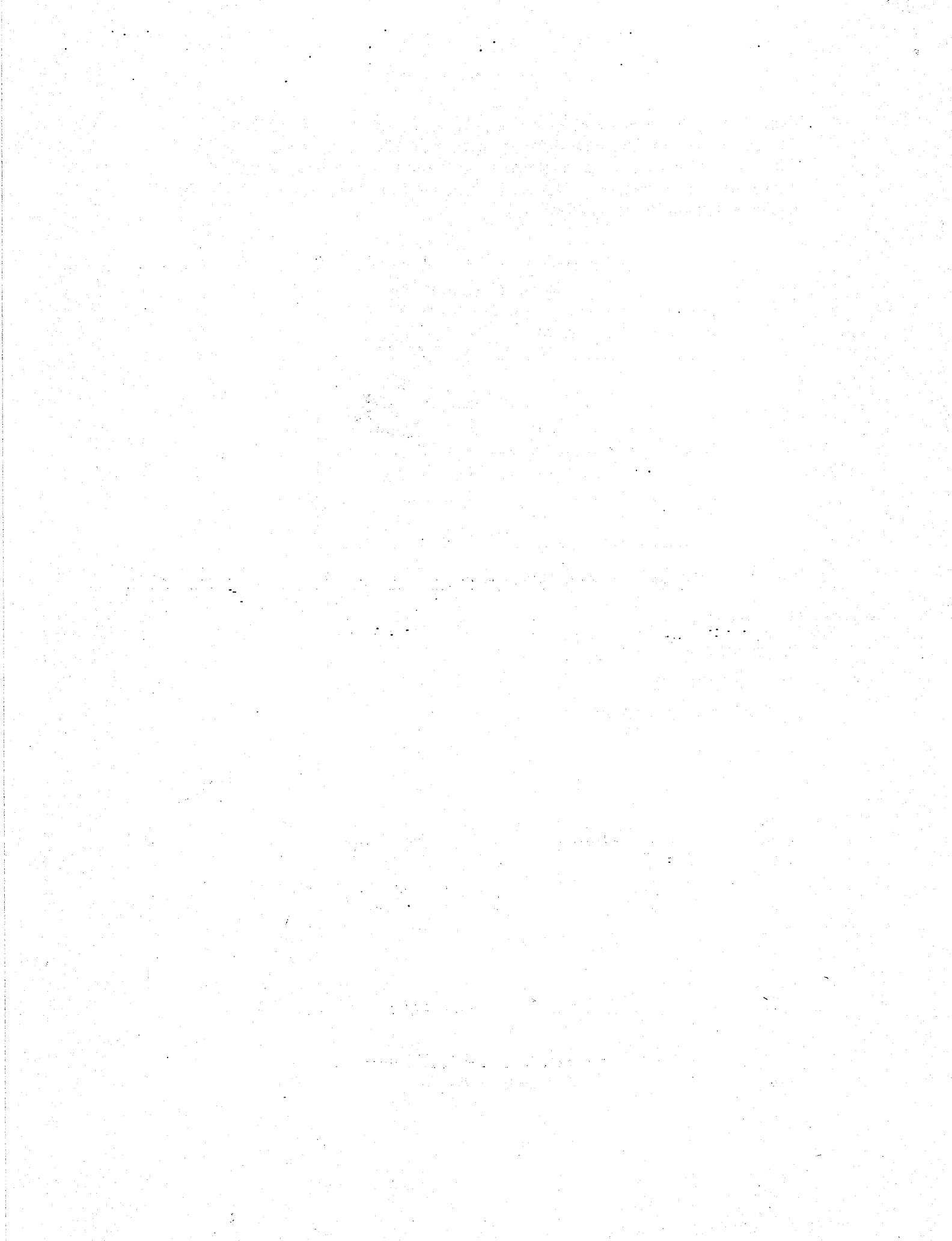
20 Zhen Yuan placed four similar cubes, W, X, Y and Z, made of four different materials, into four different containers. Each container had 150 ml of water at first. After two minutes, he took the cubes out and measured the amount of water left in the container. He recorded the results as shown in the table below.

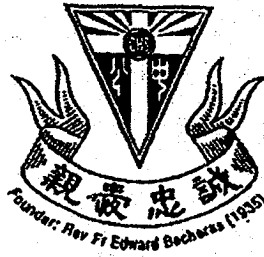
Cubes	Amount of water (ml)	
	Before	After
W	150	100
X	150	150
Y	150	80
Z	150	115

What property was Zhen Yuan testing for?

- (1) strength
- (2) waterproof
- (3) transparency
- (4) ability to float in water

End of Booklet A





**CATHOLIC HIGH SCHOOL**  
**SEMESTRAL ASSESSMENT ONE (2018)**  
**PRIMARY THREE**  
**SCIENCE**  
**BOOKLET B**

Name: \_\_\_\_\_ ( )

Class: Primary 3 - \_\_\_\_\_

Date: 11 May 2018

Parent's Signature: \_\_\_\_\_

Booklet A	40
Booklet B	20
Total	60

7 questions

20 marks

Total Time for Booklets A and B: 1 hour 15 minutes

**INSTRUCTIONS TO CANDIDATES**

Do not turn over this page until you are told to do so.  
Follow all instructions carefully.  
Answer all questions.  
Write your answers in this booklet.

This booklet consists of 7 printed pages, excluding the cover page.

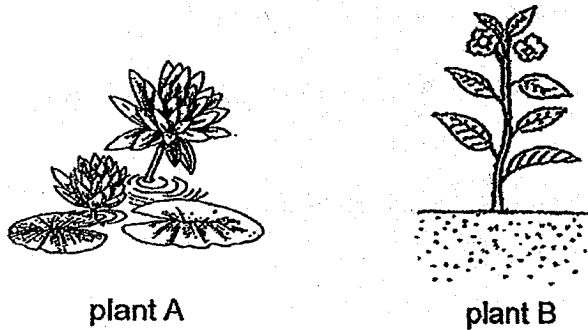
**Booklet B (20 marks)**

For questions 21 to 27, write your answers in this booklet.

The number of marks available is shown in brackets [ ] at the end of each question or part question. (20 marks)

---

21 The picture below shows plants A and B.



Based on the pictures above,

- (a) State one similarity between plants A and B. [1]  
(Do not compare shape, size and colour.)

---

---

- (b) State one difference between plants A and B. [1]  
(Do not compare shape and size.)

---

---

(Go on to the next page)

SCORE	2
-------	---



22 The table below shows the characteristics of four plants, C, D, E and F. A tick (✓) shows that the plant has that characteristic.

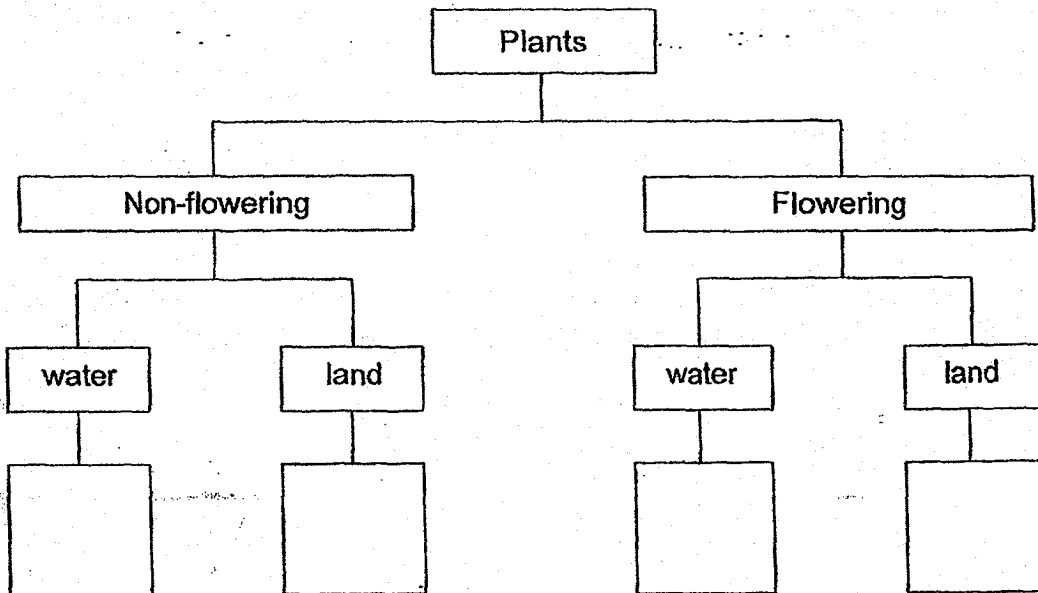
Characteristics	Plants			
	C	D	E	F
Has flowers	✓			✓
Grows in water		✓		✓

(a) Based on the information given in the table above, write down two [1] characteristics of plant C.

(i) \_\_\_\_\_

(ii) \_\_\_\_\_

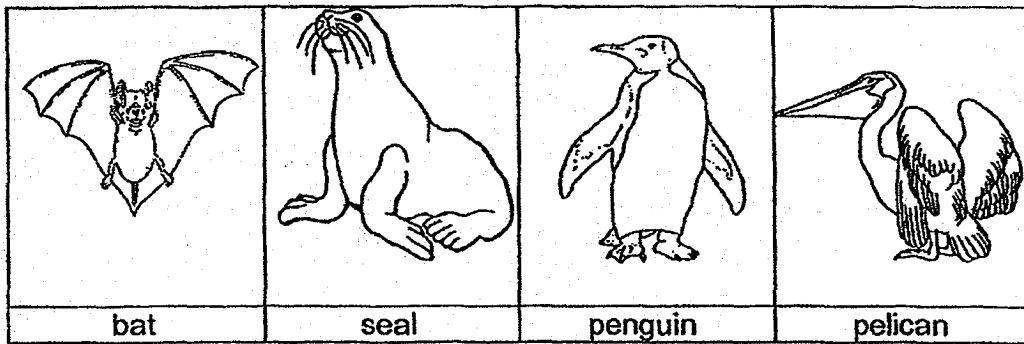
(b) Based on the table above, classify the plants, C, D, E and F, in the [2] classification chart below.



(Go on to the next page)

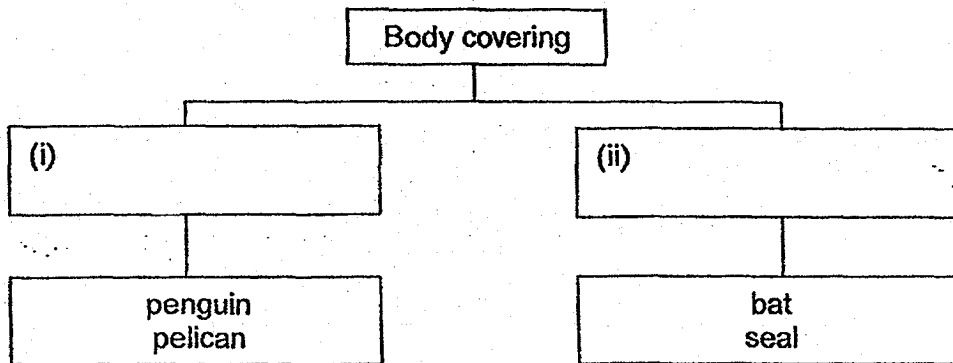
SCORE	3
-------	---

23 Fathima classified the following animals into two ways based on their characteristics.



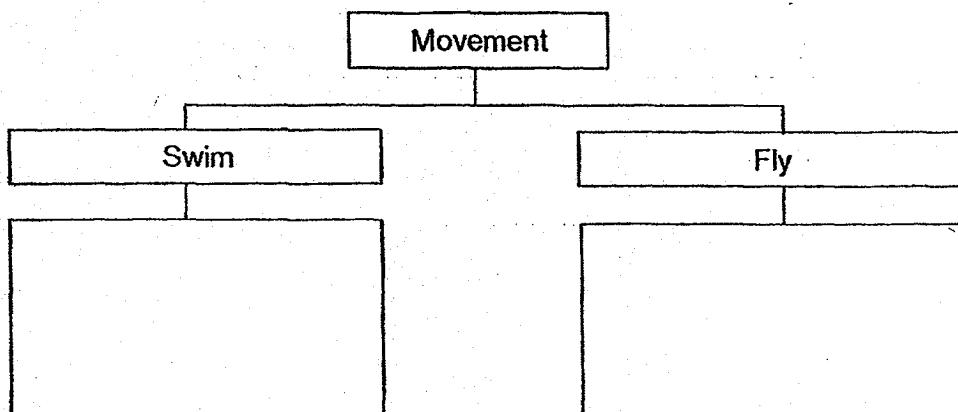
1<sup>st</sup> way

(a) She classified them according to their body covering. Write the [1] headings for the classification chart below in the boxes provided.



2<sup>nd</sup> way

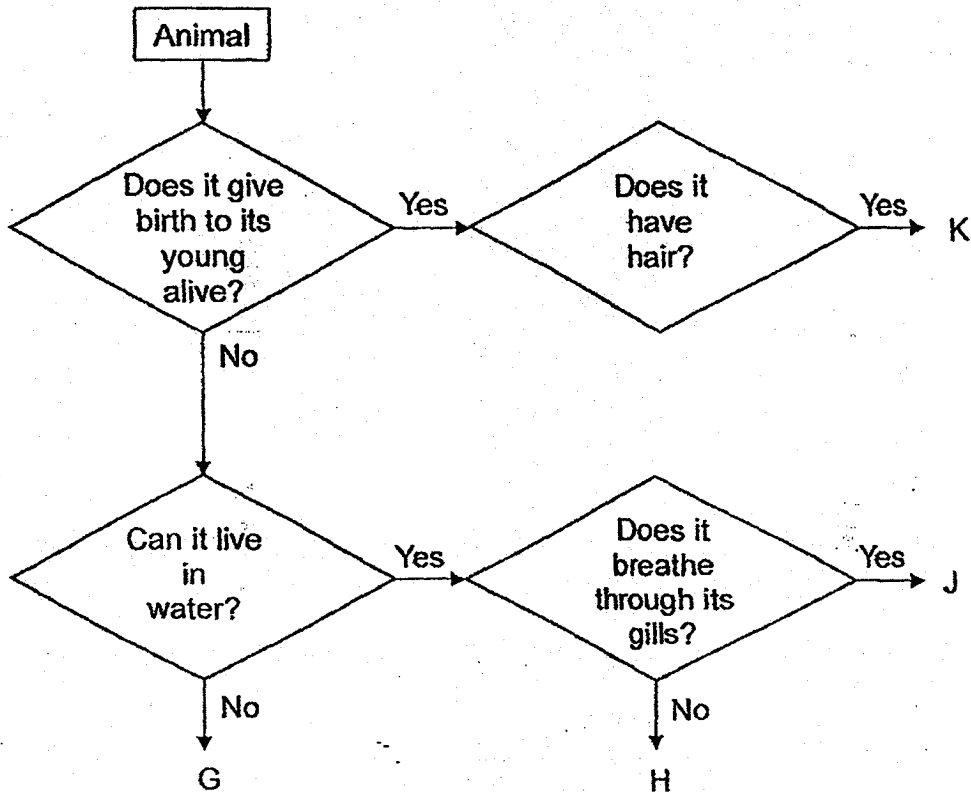
(b) She then classified the animals according to the way they move. Write [2] the four animals, bat, seal, penguin and pelican, in the correct boxes below.



(Go on to the next page)

SCORE	3
-------	---

24 Study the flow chart below.



(a) Which animal group does Animal J belong to?

[1]

---

---

(b) Based on the flow chart above, can K be a bird? Give a reason for your answer.

[1]

---

---

(c) Based on the flow chart above, write the letters, G, H, J or K, that represents an adult giraffe and an adult frog, in the spaces provided below.

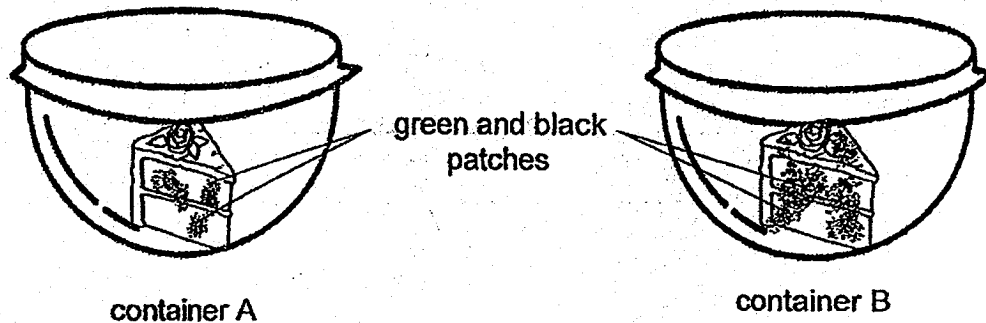
adult giraffe : \_\_\_\_\_

adult frog : \_\_\_\_\_

(Go on to the next page)

SCORE	3
-------	---

- 25 Gary had two similar slices of cakes. He placed one slice of cake into container A. He then sprayed water on the other slice of cake and placed it in container B. He then covered both air-tight containers with a lid and left them on the dining table for one week.



After one week, Gary observed that there were more green and black patches on the slice of cake in container B.

- (a) What were the green and black patches found on the slice of cakes in both containers? [1]

---

- (b) Which group of living things does the green and black patches belong to? [1]

---

- (c) Based on the experiment above, what was the condition required for the green and black patches to grow? [1]

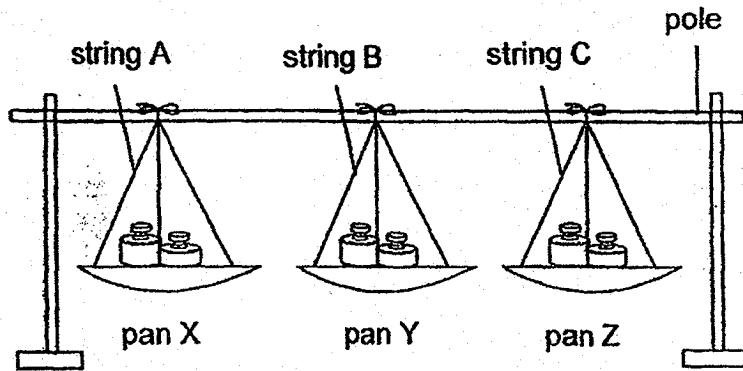
---

---

(Go on to the next page)

SCORE	3
-------	---

26. Meili set up an experiment using three different strings, A, B and C, as shown below. The strings were all of the same thickness and length. They were tied to a pole.



When Meili placed two weights on each pan, string B snapped but string A and C did not snap. Then she added another weight on pans X and Z. She observed that string C snapped.

- (a) What property of the string was Meili trying to find out? [1]

---



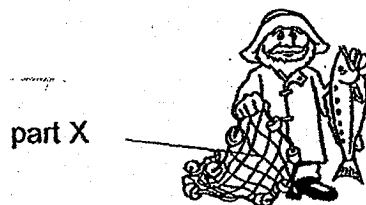
---

- (b) Arrange the three strings, A, B and C, beginning with the string which is able to hold the most number of weights to the string that is able to hold the least number of weights. [1]

\_\_\_\_\_ , \_\_\_\_\_ , \_\_\_\_\_

holds the most → holds the least

A fisherman uses fishing nets to catch fish in the sea. Meili wanted to use one of the strings to make part X of a fishing net.



- (c) Which string, A, B or C, should she use to make the net? Give a reason for your answer. [1]

---



---

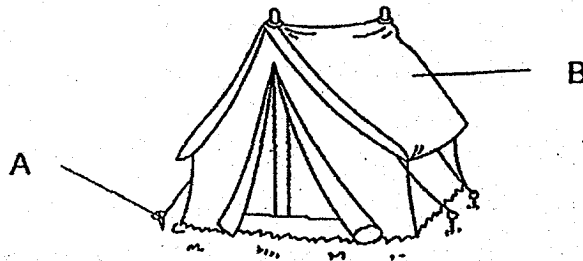
(Go on to the next page)

SCORE	3
-------	---

- 27 Candy conducted an experiment using materials X, Y and Z. She recorded her results in the table below.

Property \ Materials	X	Y	Z
Strong	Yes	Yes	Yes
Flexible	Yes	Yes	No
Waterproof	No	Yes	Yes
Transparent	No	No	No

Candy wanted to go for a camping trip. She decided to pitch a tent for shelter.



- (a) Based on the table above, which one of the materials, X, Y or Z, is most suitable to make parts A and B of the tent? [1]

(i) Part A : \_\_\_\_\_

(ii) Part B : \_\_\_\_\_

- (b) Suggest a reason why Part B cannot be transparent. [1]

---



---

- (c) Based on the table above, state one difference between materials X and Z. [1]

---



---

End of Booklet B

SCORE	3
-------	---

**EXAM PAPER 2018 (P3)**

**SCHOOL : CATHOLIC HIGH**

**SUBJECT : SCIENCE**

**TERM : SA1**

Q1	Q2	Q3	Q4	Q5	Q6	Q7	Q8	Q9	Q10
4	1	2	3	1	3	1	2	2	4
Q11	Q12	Q13	Q14	Q15	Q16	Q17	Q18	Q19	Q20
2	3	4	4	3	4	1	4	1	2

**Q21) a) They have leaves**

**b) Plant A is a water plant while Plant B is a land plant**

**Q22) a) i) It has flowers**

**ii) It does not grow in water**

**b) Non-flowering = water – D land – E**

**Flowering = water – F land – C**

**Q23) a) i) feathers**

**ii) hair**

**b) Swim – penguin , seal**

**Fly – pelican , bat**

**Q24) a) Animal J belongs to the fish group**

**b) No, birds reproduce by egg not giving birth and birds have an outer covering of feather not hair.**

**c) adult giraffe – K**

**adult fog – H**

**Q25) a) mould**

**b) They belong to the group called fungi**

**c) The condition required for the green and black patches to grow is moist place.**

**Q26) a) Strength**

**b) A , C , B**

**c) A, String A is able to hold the number of weights as compared to strings B and C.**

**Q27) a) i) Part A : Z**

**ii) Part B : Y**

**b) It is not a transparent, because it does not allow light to pass through**

**c) X is not waterproof while Z is waterproof.**