



2018 PRIMARY 3 SEMESTRAL ASSESSMENT 1

Name: _____ ()

Date: 10 May 2018

Class : Primary 3 ()

Time: 8.00 a.m. - 9.00 a.m.

Parent's Signature: _____

Duration: 1 hour

SCIENCE BOOKLET A

INSTRUCTIONS TO CANDIDATES

1. Write your name, class and register number.
2. Do not turn over this page until you are told to do so.
3. Follow all instructions carefully.
4. Answer all questions.
5. Shade your answers on the Optical Answer Sheet (OAS) provided.

Section A (14 × 2 marks)

For each question, 1 to 14, four options are given. One of them is the correct answer.

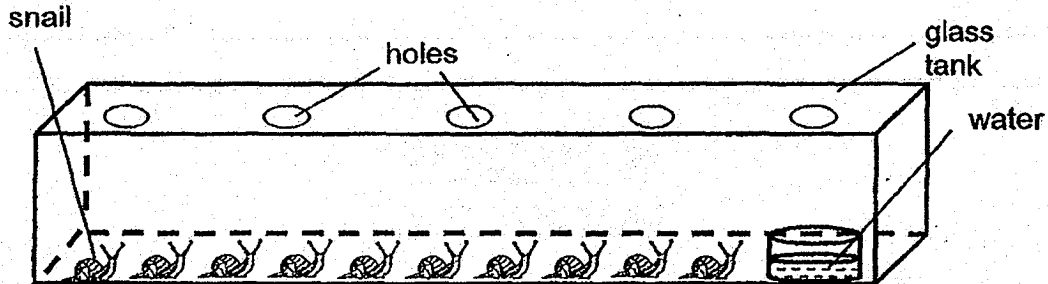
Make your choice (1, 2, 3 or 4) and shade your answers on the Optical Answer Sheet.

(28 marks)

1 Which of the following pairs of things is grouped correctly?

	Living things	Non-living things
(1)	apple	bird
(2)	seed	fish
(3)	bird	water
(4)	water	cat

2. Bala did an experiment by placing 10 snails in a glass tank as shown below. He made sure that there was water in the tank at all times.



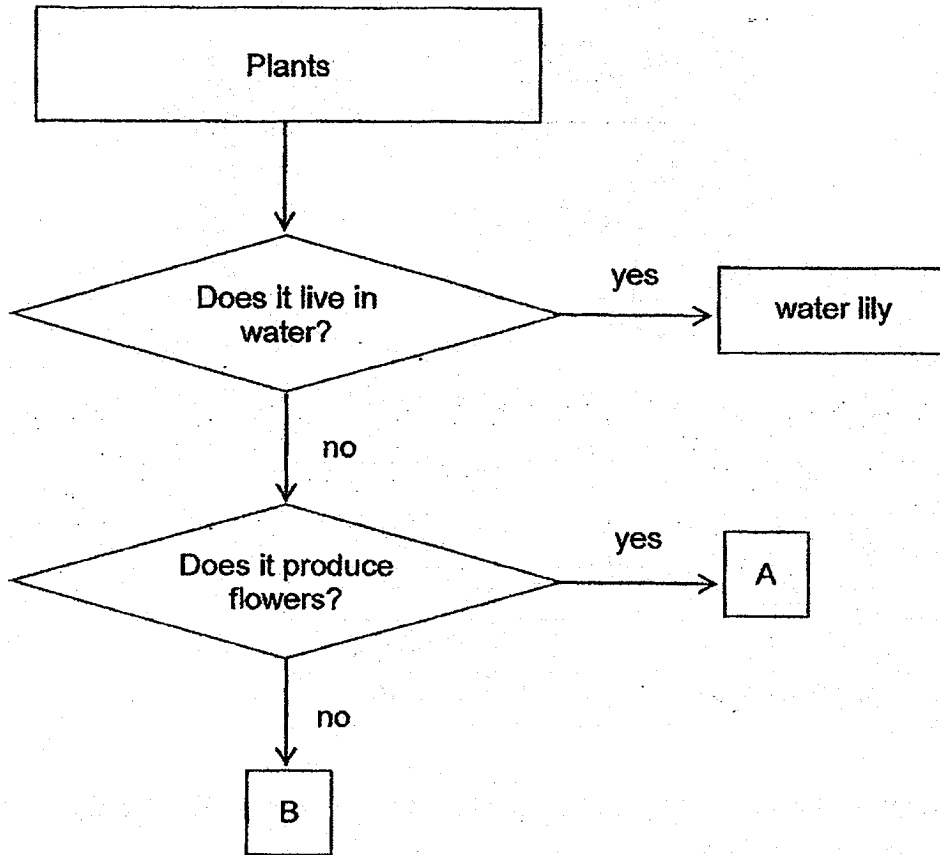
He recorded the number of snails that were alive in the tank at the end of each week.

Number of snails still alive	Week 1	Week 2	Week 3	Week 4	Week 5
	10	9	7	5	3

Why did the number of snails decrease?

- (1) There was no air.
- (2) There was no food.
- (3) There was not enough water.
- (4) The snails were not reproducing.

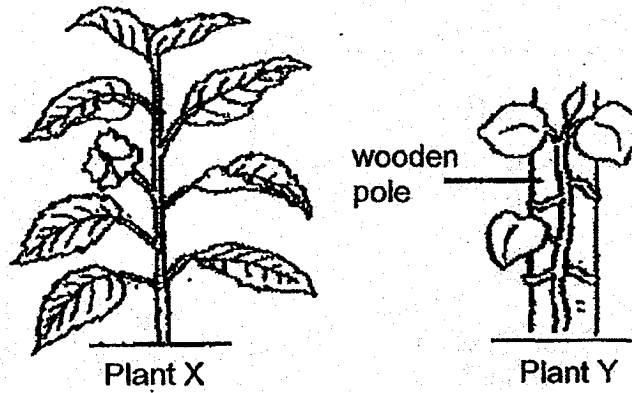
3. Study the flowchart below.



Which of the following best represent A and B?

	A	B
(1)	hibiscus	rose
(2)	bird's nest fern	moss
(3)	rose	bird's nest fern
(4)	moss	hibiscus

4. Study the plants below.



Based on the diagram, how are Plant X and Plant Y different?

	Plant X	Plant Y
(1)	has no flowers	has flowers
(2)	has no leaves	has leaves
(3)	has no fruits	has fruits
(4)	has strong stem	has weak stem

5. The table below shows some characteristics of animals, A, B, C and D.

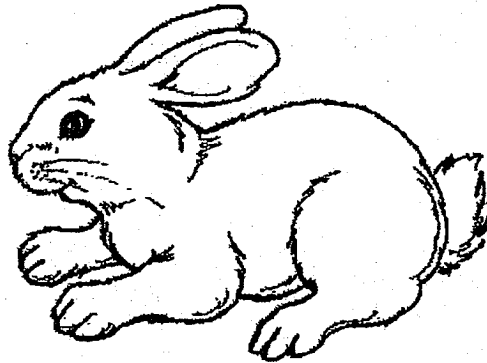
A tick (✓) shows that the animal has the characteristic.

Animal	Has moist skin	Has scales	Has gills	Has hair
A	✓			
B		✓	✓	
C		✓		
D				✓

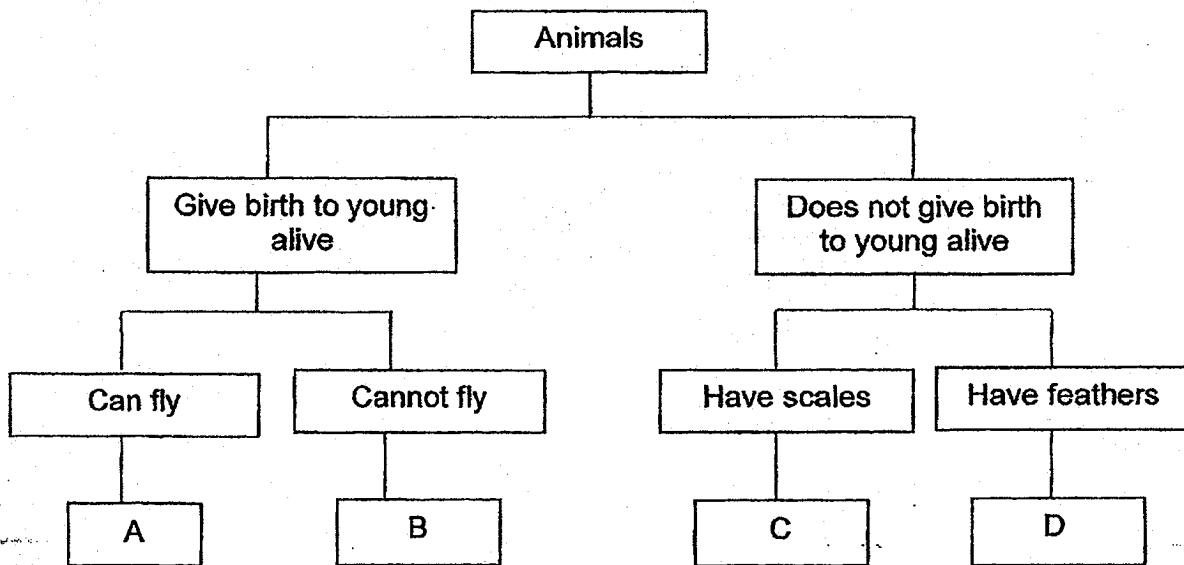
Which animal is likely to be a fish?

- (1) A
- (2) B
- (3) C
- (4) D

6. The diagram below shows a rabbit.



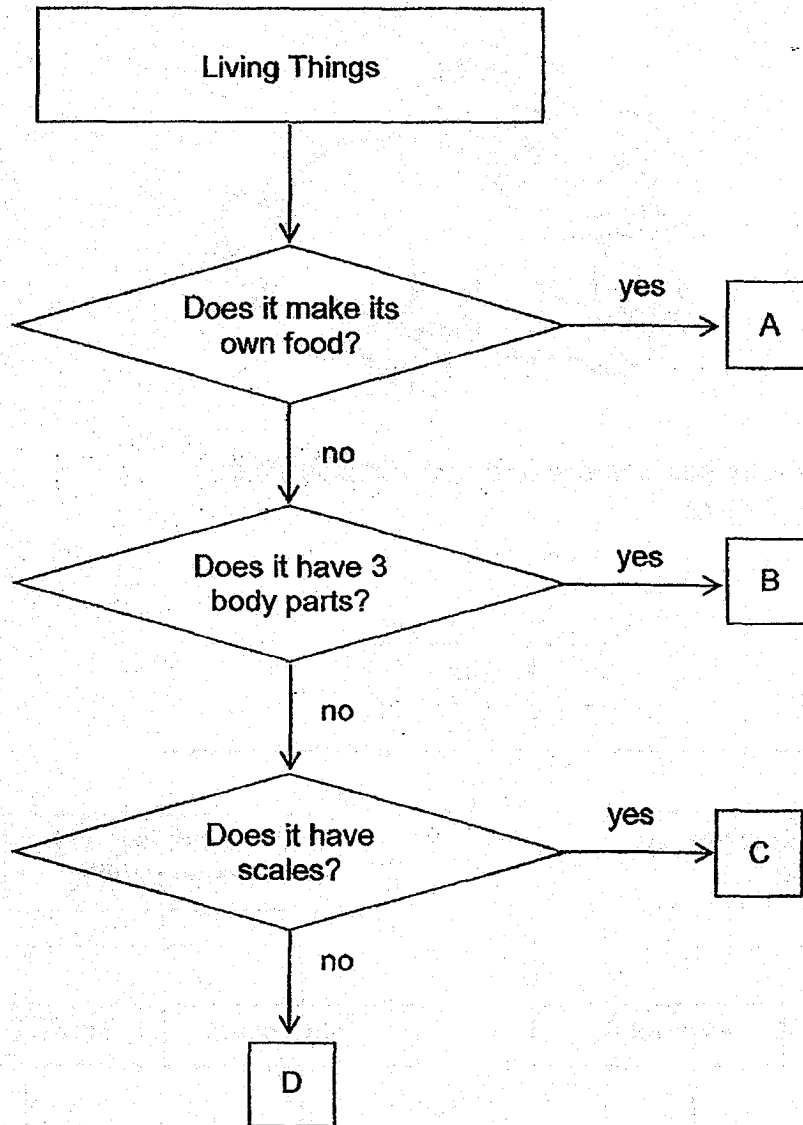
The chart below shows how some animals can be classified.



Based on the above classification chart, which of the following letters represents a rabbit?

- (1) A
- (2) B
- (3) C
- (4) D

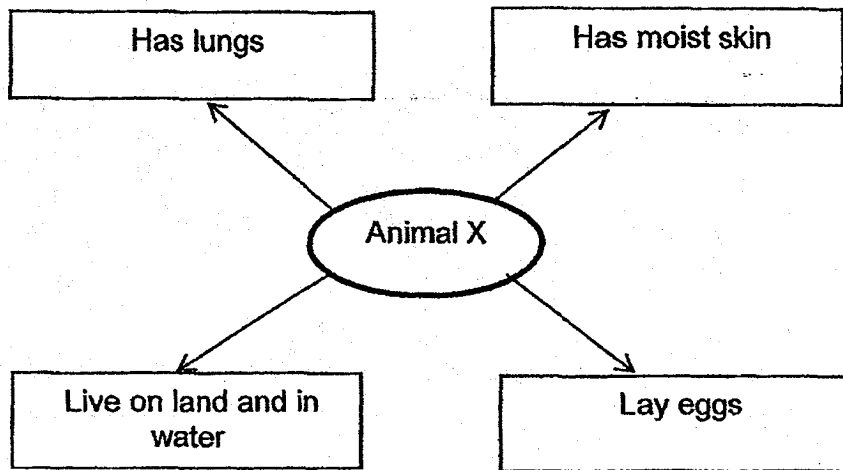
7. Study the flowchart below.



Which of the following best represent A, B, C and D?

	A	B	C	D
(1)	plant	insect	reptile	mammal
(2)	insect	reptile	mammal	plant
(3)	plant	insect	mammal	reptile
(4)	insect	mammal	plant	reptile

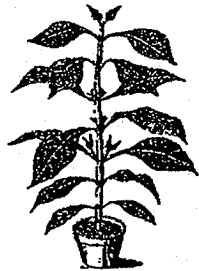
8. Study the diagram below which shows some characteristics of Animal X.



Which group does Animal X belong to?

- (1) Fish
- (2) Bird
- (3) Mammal
- (4) Amphibian

9. Study the living things below.



plant

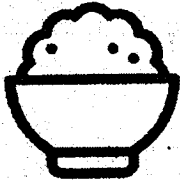
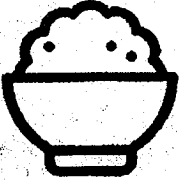
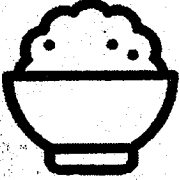
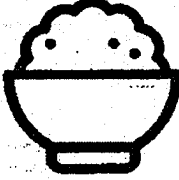


mushroom

What is the difference between the plant and the mushroom?

- (1) The plant is a living thing but the mushroom is not a living thing.
- (2) The plant can be seen with the naked eye but the mushroom cannot.
- (3) The plant reproduces by spores but the mushroom reproduces by seeds.
- (4) The plant makes its own food but the mushroom does not make its own food.

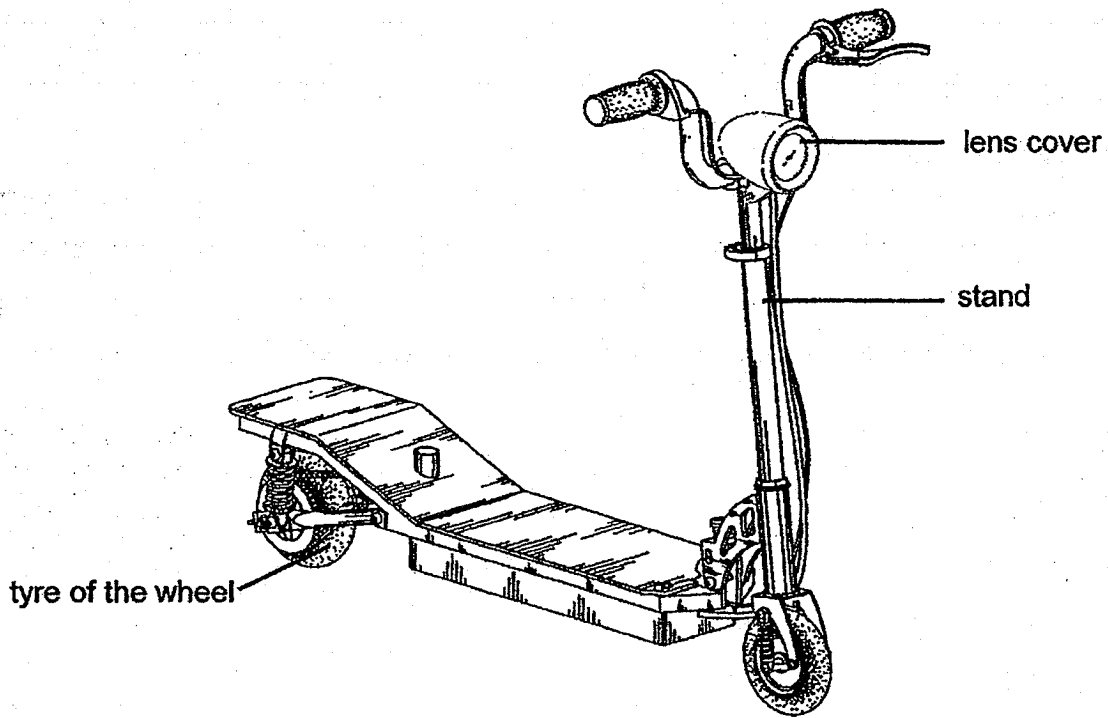
10. Four bowls of equal amount of rice A, B, C and D are placed in different conditions as shown below.

				
Bowl	A	B	C	D
Rice	Cooked	Cooked	Uncooked	Cooked
Drops of water placed on it	2	4	2	4
Location of bowl	In refrigerator	On the table	On the table	In refrigerator

Which bowl of rice has the most bacteria after one day?

- (1) A
- (2) B
- (3) C
- (4) D

11. An electronic scooter is shown below.



John needs to select suitable materials to make different parts of the scooter.

- The lens cover must allow light to pass through.
- The stand must be strong.
- The tyre of the wheel must be flexible.

What materials should the above parts (lens cover, stand and tyre of the wheel) of the scooter be made of?

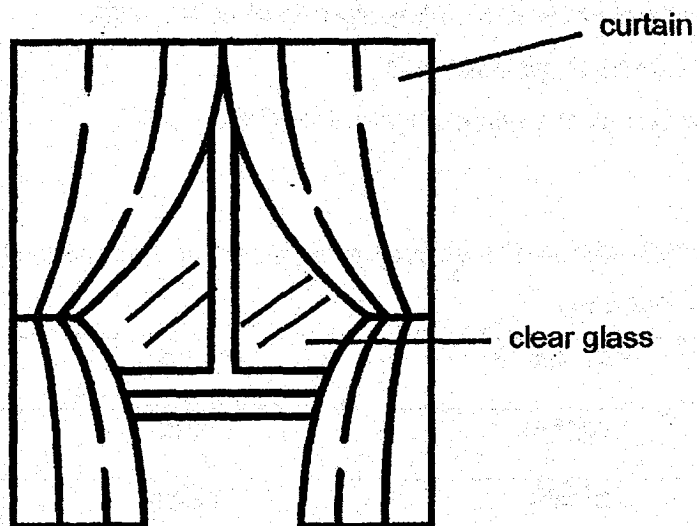
	lens cover	stand	tyre of the wheel
(1)	rubber	metal	plastic
(2)	plastic	rubber	metal
(3)	metal	rubber	plastic
(4)	plastic	metal	rubber

12. The table below provides information on the properties of materials A, B, C and D.
A tick (✓) shows that the material has the property.

	A	B	C	D
Allow some light to pass through	✓		✓	
Waterproof		✓		
Strong	✓	✓		✓

Which material would be most suitable to make a water bottle?

- (1) A
 - (2) B
 - (3) C
 - (4) D
13. Bala wants to sleep in a dark room. He wants to put up curtains at his clear glass window as shown below.

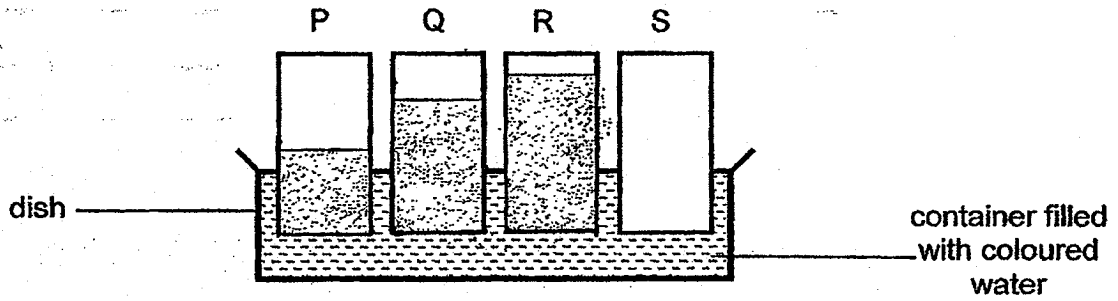


Which material would be most suitable to make the curtains?

- (1) iron sheet
- (2) black cloth
- (3) newspaper
- (4) clear plastic

14. Laura wanted to find out which material, P, Q, R or S, should be used to make a raincoat. She cut a strip from each material and placed one end of each strip into a container filled with some coloured water.

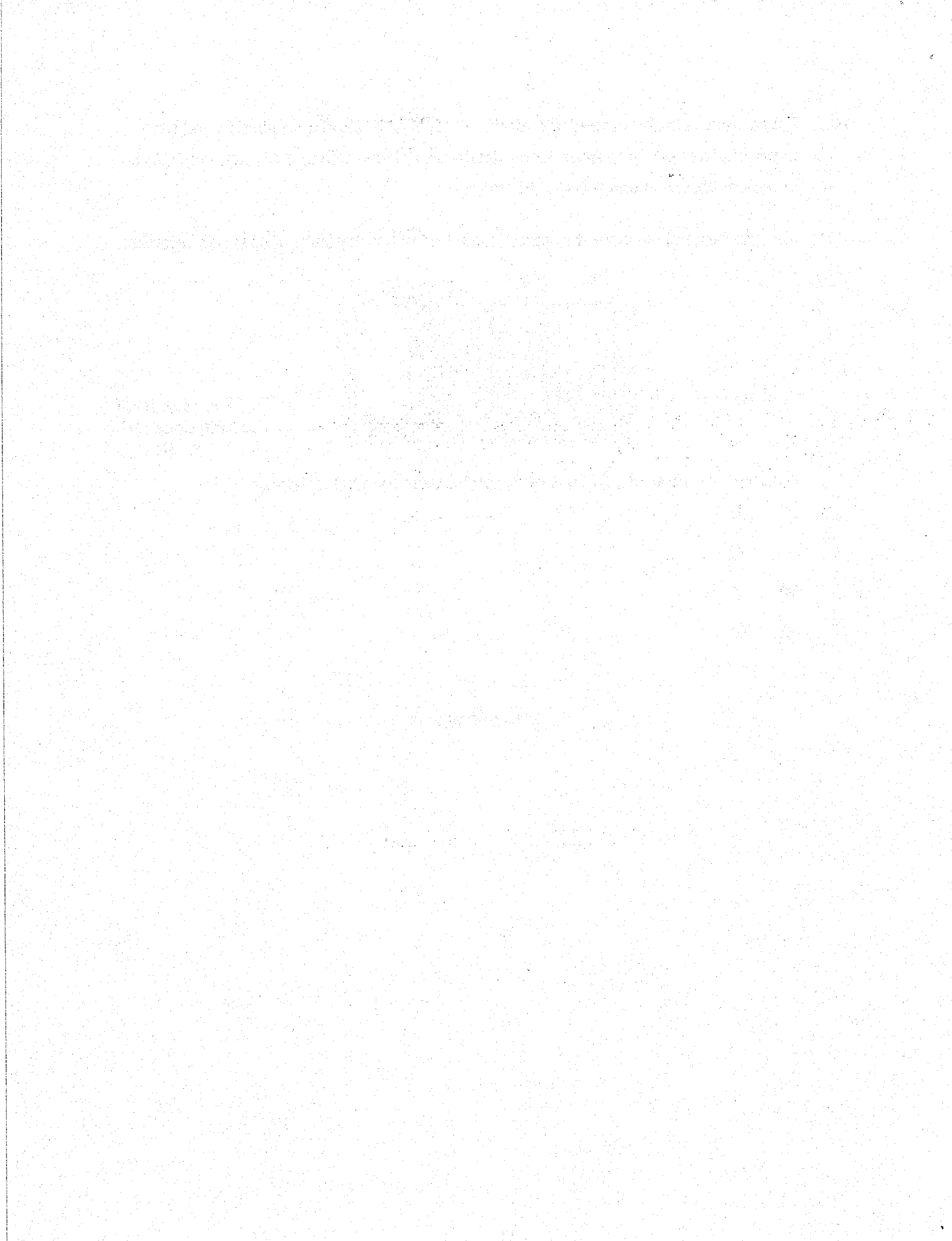
The diagram below shows the result at the end of the experiment after half an hour.



Which of the materials, P, Q, R or S, can be used to make a raincoat?

- (1) P
- (2) Q
- (3) R
- (4) S

– End of Booklet A –





2018 PRIMARY 3 SEMESTRAL ASSESSMENT 1

Name : _____ ()

Date: 10 May 2018

Class : Primary 3 ()

Time: 8.00 a.m. – 9.00 a.m.

Parent's Signature : _____

Duration: 1 hour

SCIENCE

BOOKLET B

INSTRUCTIONS TO CANDIDATES

1. Write your name, class and register number.
2. Do not turn over this page until you are told to do so.
3. Follow all instructions carefully.
4. Answer all questions.
5. Write your answers in the booklet.

Booklet A	28
Booklet B	22
Total	50

Section B (22 marks)

For the questions, 15 to 24, write your answers in the spaces provided.

15. Ahmad placed 250 g of food and 250 ml of water in 3 similar cages, X, Y and Z. She recorded the amount of food and water left at the end of the week in the table below.

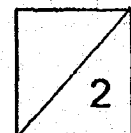
Cage	Amount of food left (g)	Amount of water left (ml)
X	250	250
Y	70	50
Z	40	20

- (a) Based on the results, which cage(s) contain(s) mice? Why?

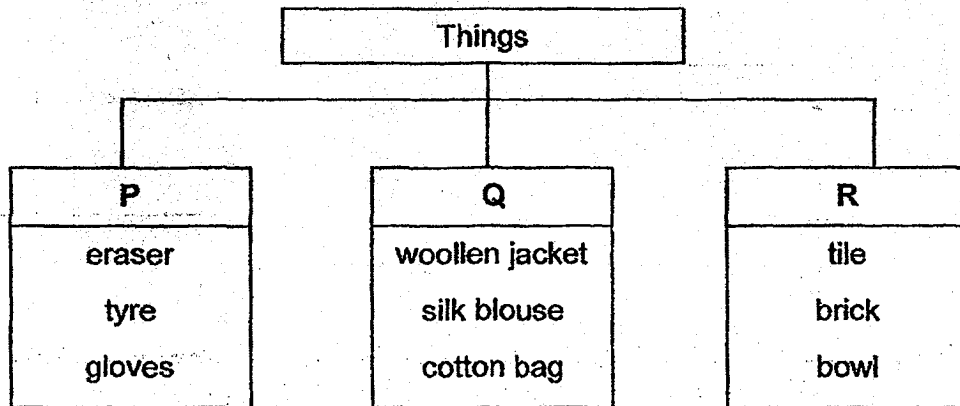
[1]

- (b) What does this experiment tell you about the characteristics of living things?

[1]



16. Study the classification chart below.



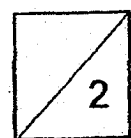
(a) How are the things stated above grouped?

[1]

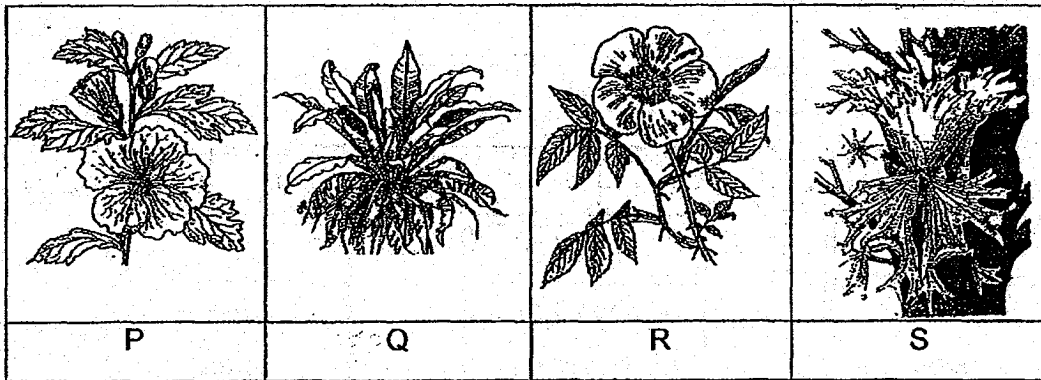
They are grouped according to _____

(b) Which group, P, Q or R, should a shirt be placed in? Why?

[1]

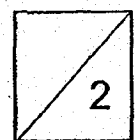
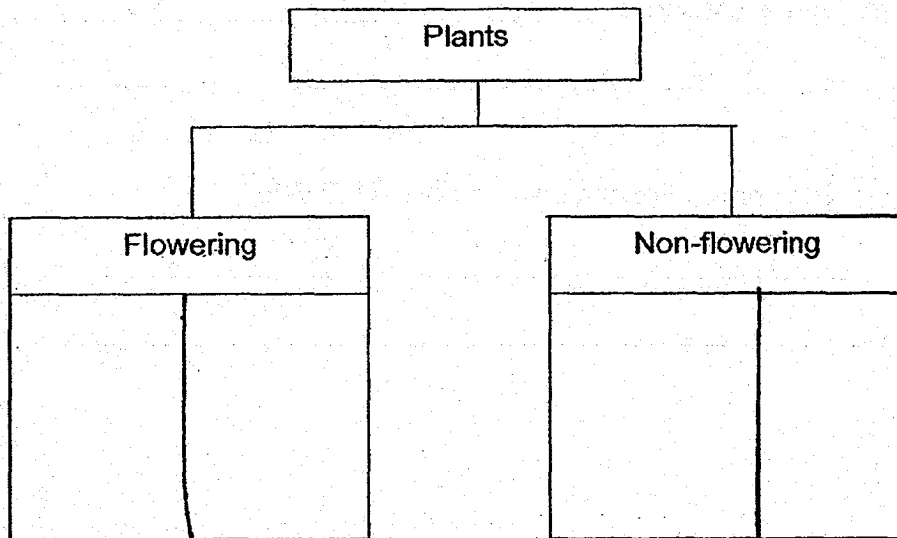


17. Study the plants P, Q, R and S shown below.

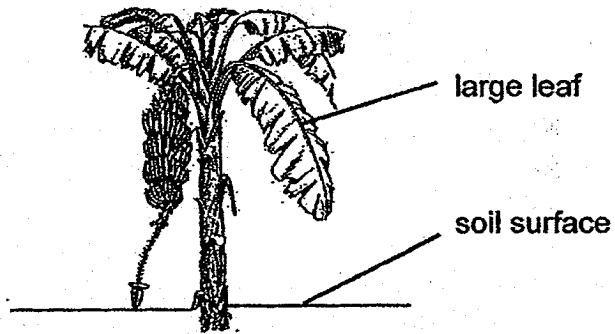


Classify the plants by writing the letters, P, Q, R and S, under the correct heading in the chart below.

[2]



18. The diagram below shows Plant X.



Plant X

(a) How can you tell that Plant X is a flowering plant even though there are no flowers on it? [1]

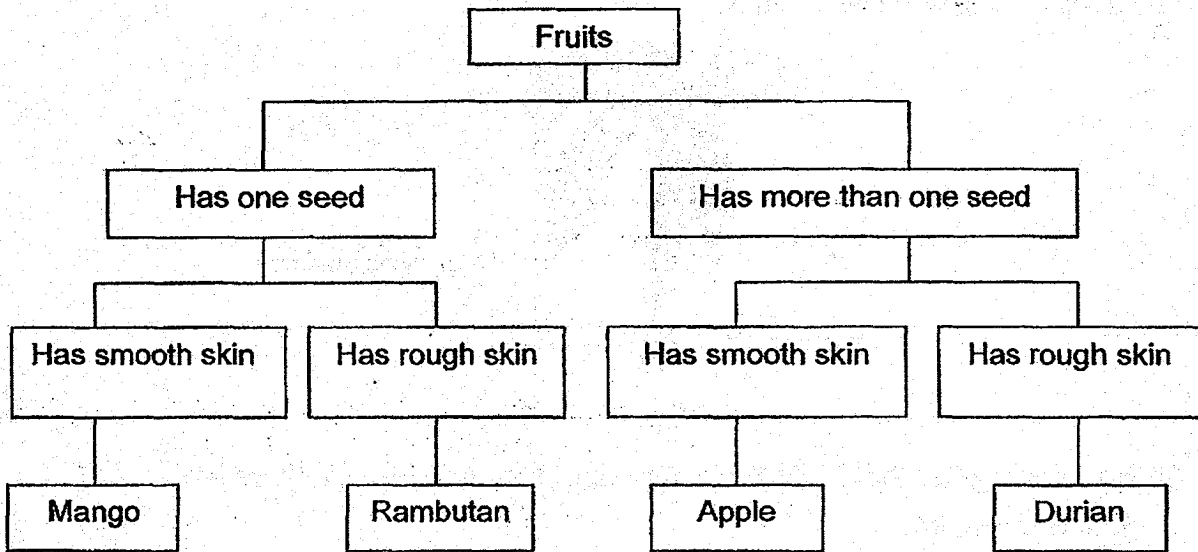
(b)



Plant Y

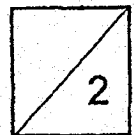
Based on the diagrams of Plant X and Plant Y, give a difference between the two plants. [1]

19. Study the classification table below.

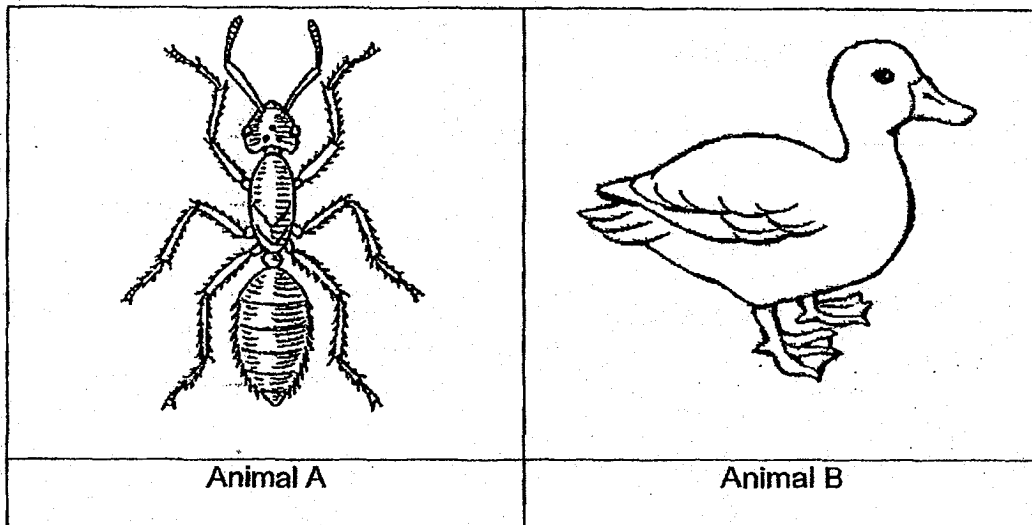


(a) Based on the classification table, describe the characteristics of durian. [1]

(b) Based on the classification table, state one similarity between the mango and rambutan. [1]



20. Study the two animals shown below.

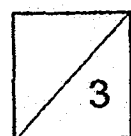


(a) Based only on the diagrams above, give two reasons why Animal A is an insect but Animal B is not. [2]

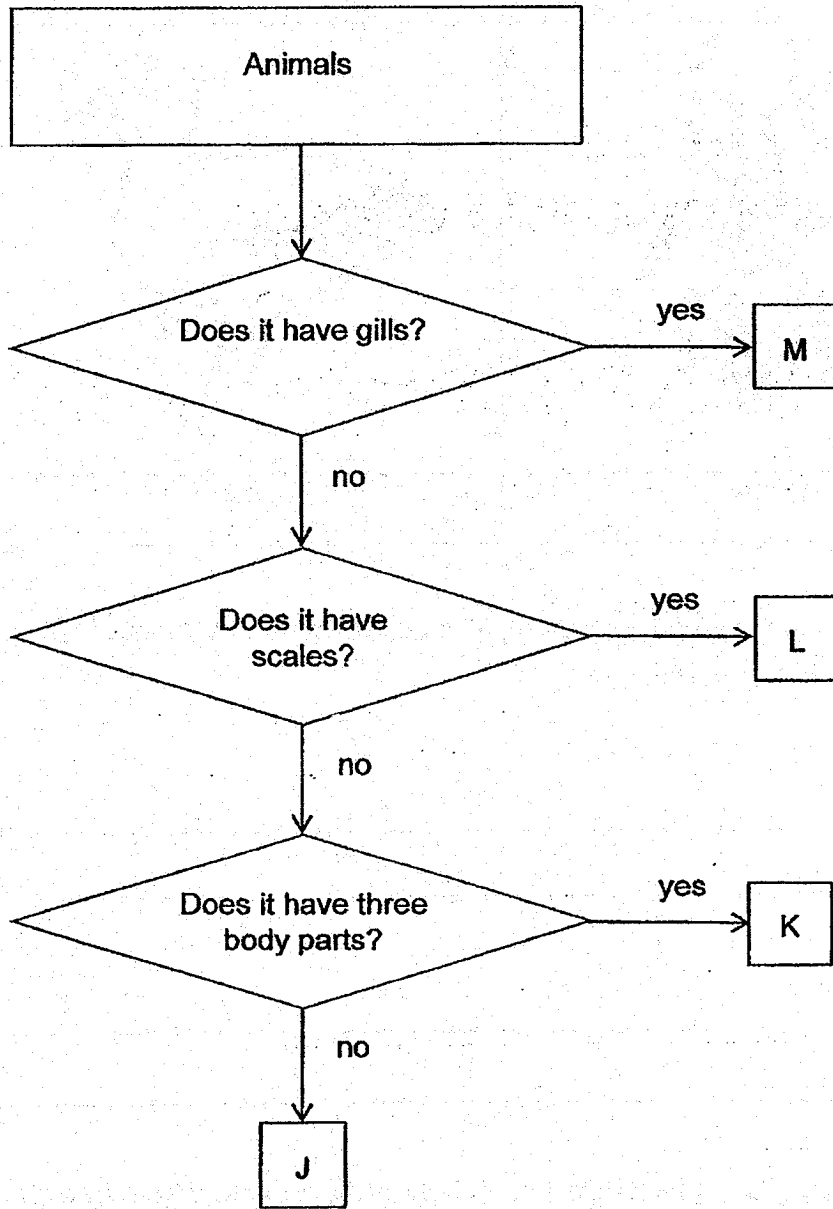
Reason 1:

Reason 2:

(b) Which animal group has a different method of reproduction from that of Animal A and Animal B? [1]


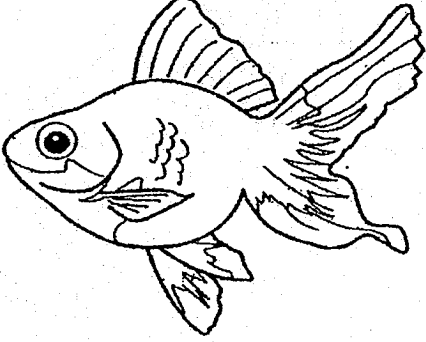
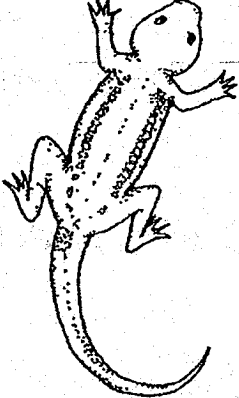
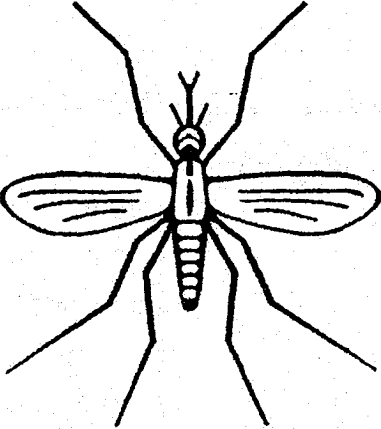


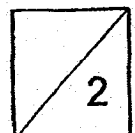
21. Study the flowchart below.



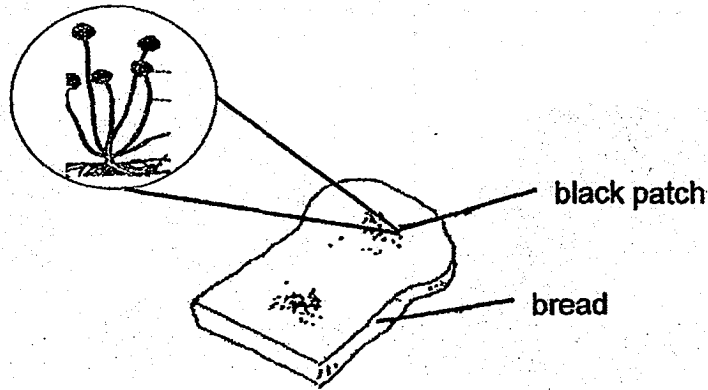
Using the information given in the flowchart, write down J, K, L or M to correctly represent the animals shown below.

[2]

	
(a) Animal _____	(b) Animal _____
	
(c) Animal _____	(d) Animal _____



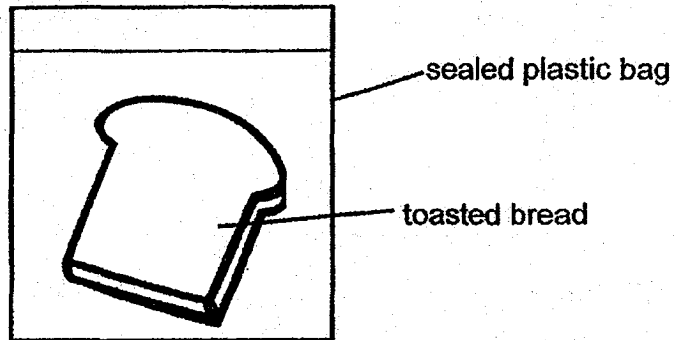
22. Liam left a piece of white bread on his table. He observed black patches on it on the fifth day.



(a) What do you think the black patches are?

[1]

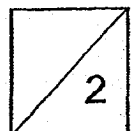
Liam toasted a new piece of white bread and left it on the table in a sealed bag as shown below.



(b) Will the black patches appear on the toasted bread on the fifth day too?

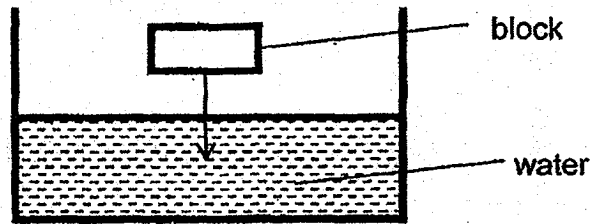
[1]

Why?



23. Li Ying did an experiment with 2 blocks, C and D, made of different materials. The blocks are of the same size, shape and thickness.

She dropped each block into the water as shown below.

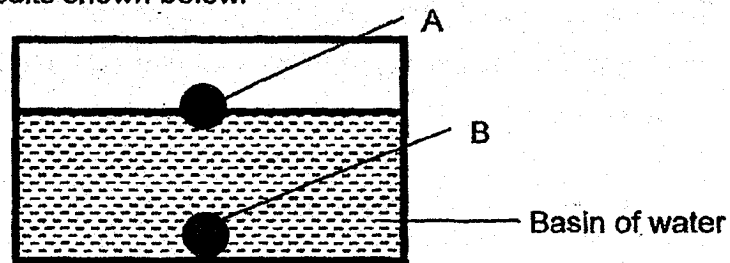


She recorded her observations in the table below.

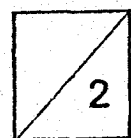
Block	Observation	Material
C	Sinks immediately	
D	Floats on water surface	

- (a) Write "ceramic" or "styrofoam" in the correct boxes for the material that block C and D are made of in the table above. [1]

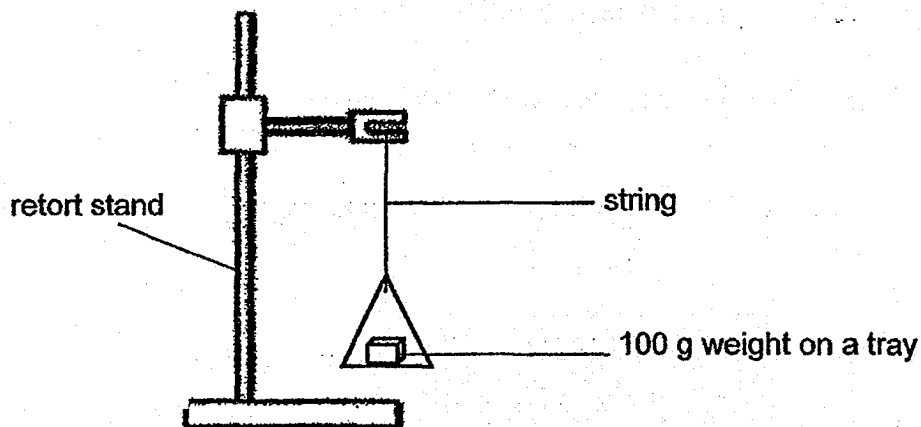
- (b) She has 2 balls, A and B, one made of glass and another made of styrofoam. She dropped both balls into a basin of water and she observed the results shown below. [1]



Which ball, A or B, is made of styrofoam and why?



24. Jack set up an experiment as shown below.



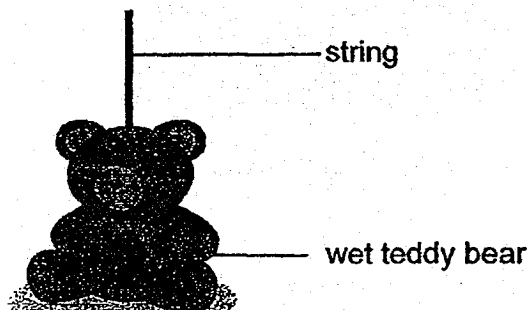
He increased the number of weights on the string until it broke.

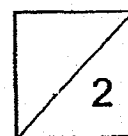
(a) What property of the string was Jack trying to find out? [1]

Jack decided to test strings of different materials that are of similar length and thickness. His results were shown in the table below.

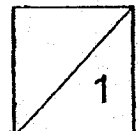
	A	B	C	D
Number of 100 g weights added before the string broke	2	4	7	9

(b) From the table above, which string (s), A, B, C or/and D, would be able to hang a 650 g wet teddy bear to dry after it had been washed as shown below? Explain why. [1]

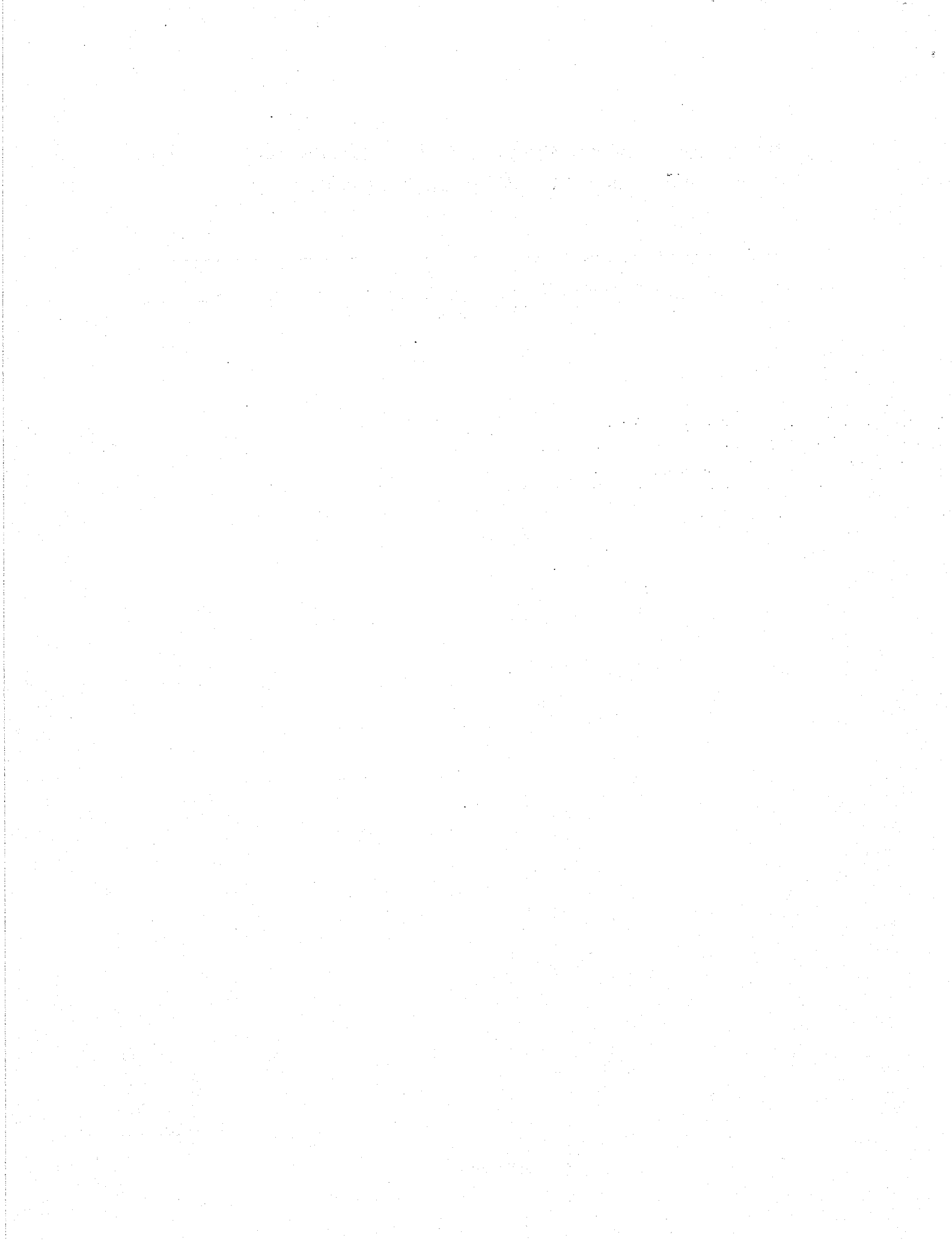




(c) Jack wants to use string D to hang a 1500 g pot of plant. He used 5 strings of String D instead of one string. Explain why he did so. [1]



– End of Paper –



EXAM PAPER 2018 (P3)

SCHOOL : TAO NAN

SUBJECT : SCIENCE

TERM : SA1

Q1	Q2	Q3	Q4	Q5	Q6	Q7	Q8	Q9	Q10
3	2	3	4	2	2	1	4	4	2
Q11	Q12	Q13	Q14						
4	2	2	4						

Q15) a) Cages Y and Z. The amount of food and water decreased.

b) Living things need food and water to stay alive.

Q16) a) They are grouped according to materials.

b) Group Q. The shirt is made of fabric and the things in group Q are made of fabric.

Q17) Flowering – P , R

Non-flowering – Q , S

Q18) a) I can tell Plant X is a flowering plant even though there are no flowers because flowers reproduce to a fruit so I can tell that Plant X is a flowering plant.

b) Plant Y live in water but Plant X does not. Plant X live on land.

Q19) a) Durian has rough skin, more than one seed and it is a fruit.

b) The similarity between the Mango and a Rambutan is that they only have one seed.

Q20) a) Reason 1 : Because it has three body parts while Animal B has 1 body part.

Reason 2 : Because it has six legs but Animal B has 2 legs.

b) Mammals has a different method of reproduction. They reproduce by giving birth to their young alive.

Q21) a) Animal J

b) Animal M

c) Animal L

d) Animal K

Q22) a) mould

b) No. There is no water in the bread for the mould to grow.

Q23) a) Block C – ceramic

Block D – Styrofoam

b) A. It floats on water.

Q24) a) Where there it is strong or not.

b) String C and D. Both are able to hold 650 g weight.

c) It is to increase the strength of string.