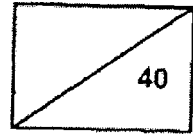


RED SWASTIKA SCHOOL  
SCIENCE  
PRIMARY 5  
CLASS TEST (2)



Name: \_\_\_\_\_ ( ) Parent's Signature: \_\_\_\_\_

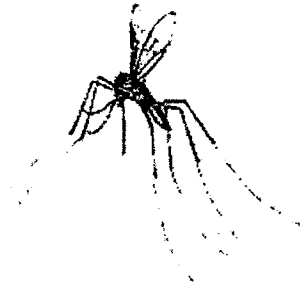
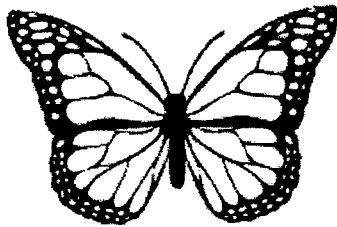
Class: Pr. 5 \_\_\_\_\_ Date: \_\_\_\_\_

Total time for Section A and B: 50 minutes

**Section A: Multiple-Choice Questions (14 x 2 = 28 marks)**

Choose the most suitable answer and shade its number in the OAS provided.

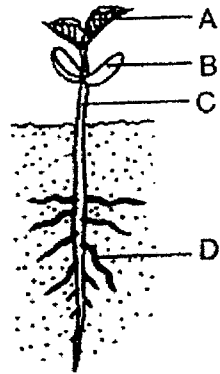
1. The diagram below shows an adult butterfly and mosquito.



Which of the following statements are true?

- A: Both animals have a 4-stage life cycle.
  - B: Both animals have the nymph stage.
  - C: Both animals have young which do not look like the adults.
  - D: Both animals have young which live in water.
- (1) A and B only  
(2) A and C only  
(3) C and D only  
(4) A, C and D only

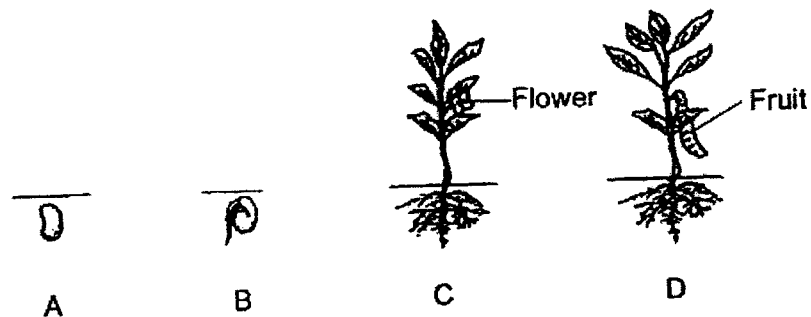
2. The diagram below shows a seedling.



Which one of the following is true?

- (1) As the mass of A gets larger, the mass of C gets smaller.
- (2) As the mass of A gets larger, the mass of B gets smaller.
- (3) As the mass of C gets larger, the mass of D gets smaller.
- (4) As the mass of D gets larger, the mass of A gets smaller.

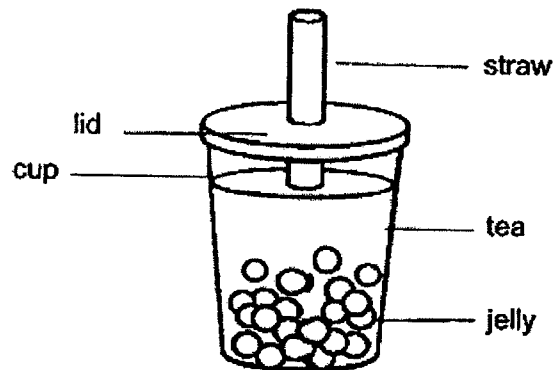
3. The diagram below shows the different stages of a flowering plant.



In which stage(s) is/are the plant able to reproduce?

- (1) D only
- (2) B and C only
- (3) C and D only
- (4) A, B, C and D

4. Which of the following statements is not correct?
- (1) The egg is produced in the ovary.
  - (2) The sperm is produced in the testis.
  - (3) The fertilised egg develops in the ovary.
  - (4) The fusion of the sperm and egg results in a fertilised egg.
5. Which of the following is a form of matter?
- (1) Air
  - (2) Heat
  - (3) Light
  - (4) Thunder
6. The diagram below shows a cup of tea with jelly.

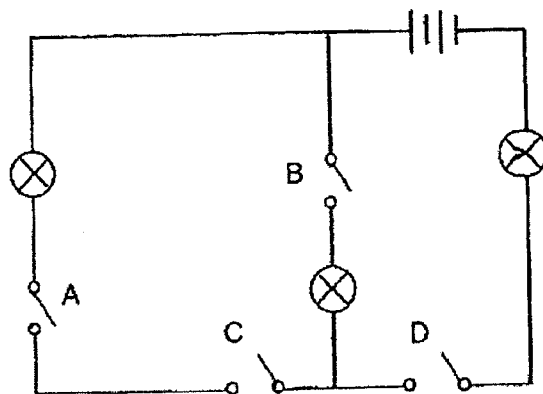


Which of the following options shows the states of matter that can be found in the glass of tea with jelly?

	<b>Solid</b>	<b>Liquid</b>	<b>Gas</b>
(1)	No	Yes	No
(2)	Yes	Yes	No
(3)	No	Yes	Yes
(4)	Yes	Yes	Yes

7. Which of the following is a way to conserve electricity?
- (1) Taking short showers instead of long baths.
  - (2) Setting the air conditioner to 20°C each time.
  - (3) Turning on the TV and the radio at the same time.
  - (4) Turning on the fan instead of the air conditioner on a cool day.

8. Study the circuit below carefully.



Which of the options below shows the correct number of bulb that are turned on when the respective switches are closed or opened?

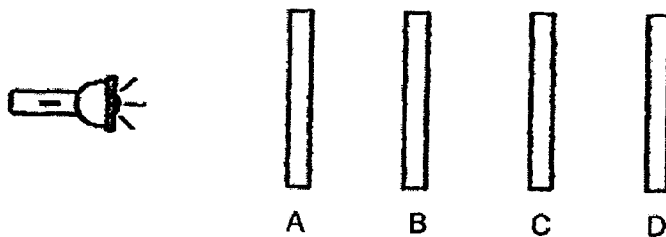
	Switch A	Switch B	Switch C	Switch D	Number of bulbs turned on
(1)	Closed	Closed	Open	Open	2
(2)	Open	Closed	Open	Closed	0
(3)	Closed	Closed	Closed	Open	0
(4)	Closed	Open	Closed	Open	2

9. Some friends discussed why they can see a lit candle in a dark room.

Sam:	We can see the lit candle because light from our eyes is reflected onto the candle.
Donny:	We can see the lit candle because it is a source of light.
Tom:	Although the lit candle is not a source of light, we can see it as it reflects light from outside into our eyes.
Linda:	Light from the lit candle goes into our eyes, so we can see the lit candle.

Who is/are correct?

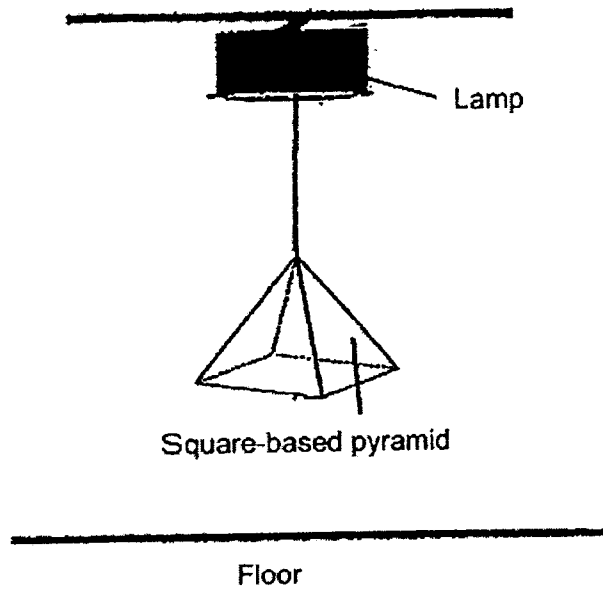
- (1) Donny only
  - (2) Donny and Linda only
  - (3) Sam, Donny and Linda only
  - (4) Sam, Linda and Tom only
10. Four sheets made of different materials are placed in a straight line. A torch was turned on and a bright patch of light could be seen on sheet C.



Which of the following statements must be correct?

- (1) A could be made of wood.
- (2) B could be made of ceramic.
- (3) C could be made of metal.
- (4) D could be made of rubber.

11. Study the setup below carefully. A pyramid made of clear glass was hung below a lamp as shown.



Which of the following would be formed on the floor by the pyramid?

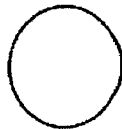
(1)



(2)



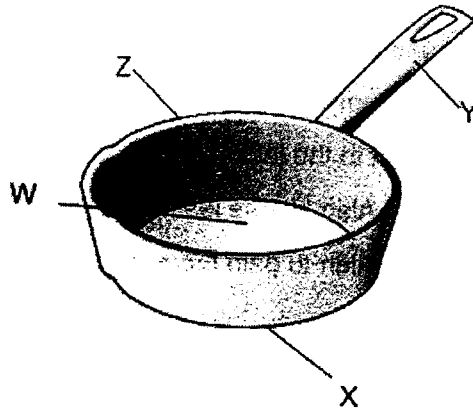
(3)



(4)



12. The diagram below shows a frying pan.



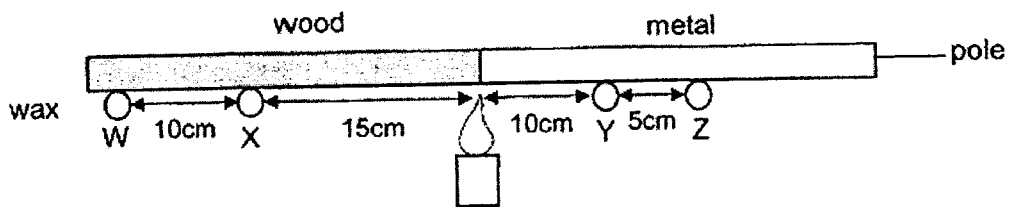
Which part of the frying pan would be made from a poor conductor of heat?

- (1) W
- (2) X
- (3) Y
- (4) Z

13. Alan was going to the cinema. His mother told him to wear a jacket as it would be very cold in the cinema.

How can wearing a jacket keep Alan warm?

- (1) Alan gained heat from the jacket as it is a source of heat.
  - (2) Alan lost more heat to the jacket as it is a poor conductor of heat.
  - (3) The jacket caused Alan to lose less heat to the surroundings in the cinema.
  - (4) The jacket caused Alan to gain more heat from surroundings in the cinema.
14. Four drops of wax, W, X, Y and Z, of the same size were placed on a pole made up of wood and metal as shown in the diagram below. A burning candle was placed in the centre of the pole.



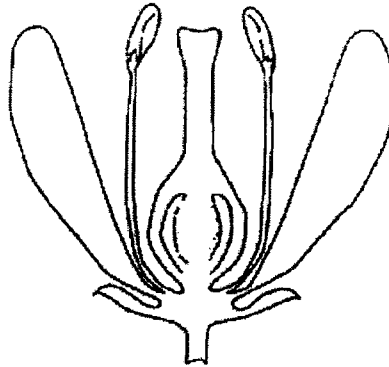
Which of the following shows the correct order in which the four drops of wax will melt, starting from the fastest?

- (1) W, X, Y, Z
- (2) Y, Z, X, W
- (3) Z, W, X, Y
- (4) Y, X, Z, W



**Section B: Open-ended Questions (3 Questions: 12 marks)**

15. The diagram below shows a flower from a mango plant. Study the picture carefully.



(a) A part of a typical flower is missing in the picture. Name the missing plant part and state its function. (2m)

---

---

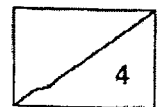
---

(a) State two differences between a flower that is insect-pollinated and one that is wind-pollinated. (2m)

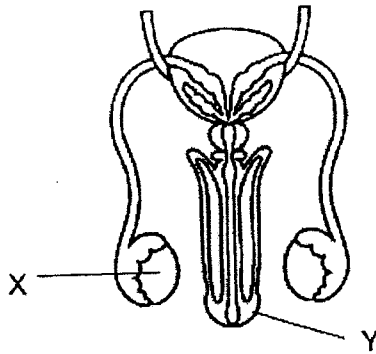
---

---

---



16. The diagram below shows the male human reproductive system.



(a) Name Part X and Part Y. (2m)

Part X: \_\_\_\_\_

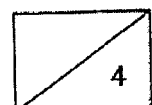
Part Y: \_\_\_\_\_

(b) A man underwent surgery to remove one of Part X due to a medical condition. Will the man still be able to reproduce? Explain your answer. (2m)

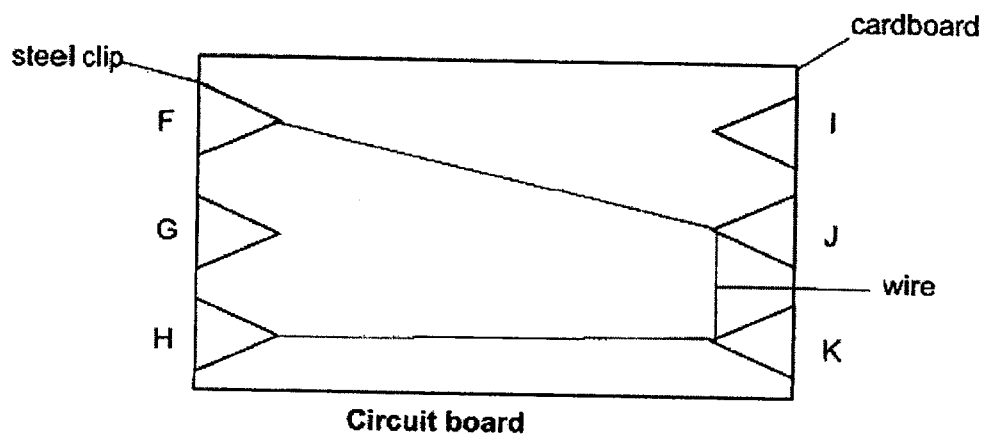
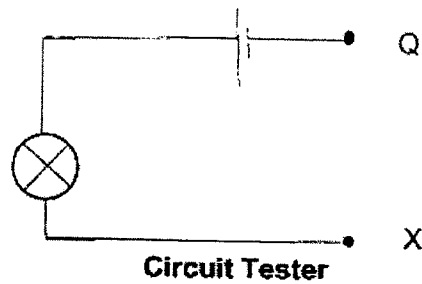
---

---

---



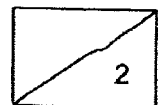
17. Study the circuit tester and circuit board below carefully. The circuit board is made of a wire and a cardboard with six steel clips, F, G, H, I, J and K.



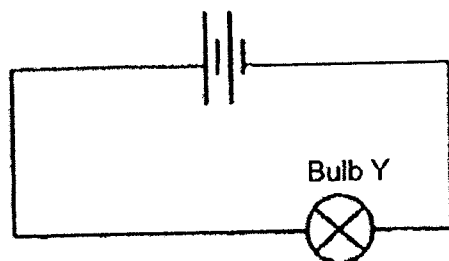
- (a) Will the bulb light up when wires Q and X of the circuit tester are connected to the following pairs of steel clips?

Put a tick in the correct boxes to indicate your answer. (2m)

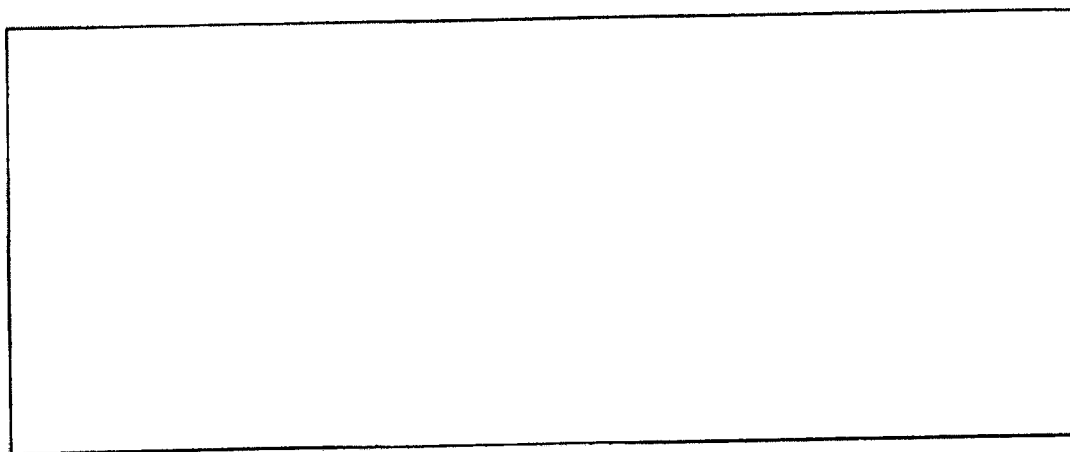
Steel clips	Will the bulb light up?	
	Yes	No
F and K		
G and J		
H and J		
G and I		



(b) Study the circuit below carefully.



(i) Given 2 batteries and 3 bulbs, draw a circuit diagram to show how the 3 bulbs can shine as bright as Bulb Y. You must use all the components provided. (1m)

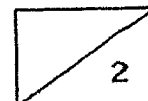


(ii) Name an advantage of the arrangement of bulbs that you have drawn. (1m)

---

---

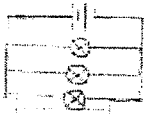
**End of Paper**  
**Please check your answers.**



SCHOOL : RED SWASTIKA PRIMARY SCHOOL  
 LEVEL : PRIMARY 5  
 SUBJECT : SCIENCE  
 TERM : CLASS TEST 1

CONTACT :

Q 1	Q2	Q3	Q4	Q5	Q6	Q7	Q8	Q9	Q10
2	2	3	3	1	4	4	3	2	3
Q11	Q12	Q13	Q14						
4	3	3	2						

Q15)	<p>a) Ovule. Ovule contains egg cells.</p> <p>b) Insect-pollinated flowers have nectar but wind-pollinated flowers do not have nectar.</p>																	
Q16)	<p>a) part X: testis part Y: penis</p> <p>b) Yes. Only 1 testis is removed. The other testis can still produce sperm for fertilisation to take place.</p>																	
Q17)	<p>a)</p> <table border="1" style="margin-left: 40px;"> <thead> <tr> <th rowspan="2">Steel clips</th> <th colspan="2">Will the bulb light up?</th> </tr> <tr> <th>Yes</th> <th>No</th> </tr> </thead> <tbody> <tr> <td>F and K</td> <td style="text-align: center;">✓</td> <td></td> </tr> <tr> <td>G and J</td> <td></td> <td style="text-align: center;">✓</td> </tr> <tr> <td>H and J</td> <td style="text-align: center;">✓</td> <td></td> </tr> <tr> <td>G and I</td> <td></td> <td style="text-align: center;">✓</td> </tr> </tbody> </table> <p>b)i</p>  <p>ii) If one bulb fuses, the other bulbs will still light up. Electricity will flow through in the closed circuit.</p>	Steel clips	Will the bulb light up?		Yes	No	F and K	✓		G and J		✓	H and J	✓		G and I		✓
Steel clips	Will the bulb light up?																	
	Yes	No																
F and K	✓																	
G and J		✓																
H and J	✓																	
G and I		✓																

