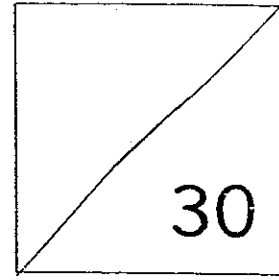


HENRY PARK PRIMARY SCHOOL

Term 2 2013

ENGLISH LANGUAGE QUIZ 2

Primary 2



Name: _____ () Parent's signature: _____

Class: P2 _____ Date: _____

PART 1: Vocabulary (8 marks)

Read the sentences carefully. Choose the most suitable answer and write its number in the brackets. (4 x 1m)

1. The _____ moves into a new shell as it grows bigger.

(1) clam

(2) hermit crab

(3) snail

(4) turtle

()

2. My grandmother puts a lot of meat and vegetables to cook her special pot of _____.

- (1) drink
- (2) jelly
- (3) sandwich
- (4) stew

()

3. Uncle Toby's duck rice is very popular as it is very _____.

- (1) sour
- (2) salty
- (3) tasty
- (4) terrible

()

4. "Get this cockroach off me!" _____ the queen loudly.

- (1) mumbled
- (2) muttered
- (3) quivered
- (4) screeched

()

Read the passage and fill in the blanks with the words given in the box. Use each word once only. (4 x 1m)

jelly	custard
chocolate	ice cream

Alice loves to eat desserts and she would eat them at every meal if she could. However, her mother does not allow her to have too much as it is unhealthy.

Last Sunday, Mother had to go to work. Before leaving the house, she told Alice not to help herself to the desserts in the fridge. However, Alice did not obey her. For breakfast, she had three big scoops of strawberry-flavoured (5) _____ from the freezer.

At lunch, Alice had five cups of wobbly (6) _____.

She was still hungry and helped herself to two long bars of

(7) _____

She also had four bowls of egg (8) _____ for

tea. That evening, Alice had a terrible stomachache!

PART 2: Grammar (8 marks)

Read the sentences carefully. Choose the most suitable answer and write its number in the brackets. (3 x 1m)

9. Primary 2 Care won the _____ number of prizes in the Swimming Carnival.

- (1) few
- (2) many
- (3) most
- (4) several

()

10. A _____ of sailors came to our school yesterday to give us a talk about their lives at sea.

- (1) crew
- (2) herd
- (3) flock
- (4) litter

()

11. "You _____ a great job in helping the old lady to cross the road yesterday!" Mr Tan praised his pupil.

(1) do

(2) did

(3) does

(4) doing

()

Read the passage and fill in the blanks with the words given in the box. Use each word once only. (5 x 1m)

to	out	for	on	inside
----	-----	-----	----	--------

It rained heavily yesterday. Many drivers were caught in traffic jams (12) _____ the roads. They were stuck in traffic (13) _____ a long time as several areas in Singapore were flooded.

It was also reported that a tree had fallen onto a bus. Three passengers were trapped (14) _____ the bus. Many people got (15) _____ of their cars to help them. An ambulance arrived at the scene and sent the injured passengers (16) _____ the hospital. Fortunately, no one was seriously injured.

PART 3: Word Order (2 × 2m = 4m)

Rearrange the words to form a complete statement. Begin each statement with a capital letter.

17. patterns / shells / tortoises / on / have / their

18. cried / when / Charlie / punished / mother / his / him

PART 4: Comprehension (10 marks)

Read the passage carefully and answer the questions.

A conch is a type of sea snail. The name refers to a large sea snail with a spiral shell.

A conch feeds on algae. It grows from a tiny larva into a snail weighing about 200 grams in its first year. It reaches about 2 kilogrammes as an adult. A conch becomes an adult after about four years. A queen conch can live up to twenty years if it is protected.

A conch's shell grows in a spiral pattern with bumps around the outside of the shell. When a conch is young, the bumps are long and spiky. They help to protect the conch against predators and help the conch to balance in moving water. The bumps become short as the conch grows and its shell becomes large and heavy. A conch moves into deeper water as it grows older. However, it returns to shallow water to lay its eggs.

A conch is edible. It can be eaten raw. Simply slice the flesh and put it in salads. If you do not like to eat it raw, it can be cooked in soups.

Read each sentence and place a tick (✓) in the correct box.

(3 × 1m)

19. A queen conch can live up to four years.
20. Conch meat can be eaten without cooking.
21. The bumps of a conch help it to balance in moving water.

True	False

Fill in the blanks with the correct word from the passage.

(3 x 1m)

22. A young conch has and spiky bumps whereas
an adult conch has bumps.

23. Which word in the last paragraph has the same meaning as 'can be eaten'?

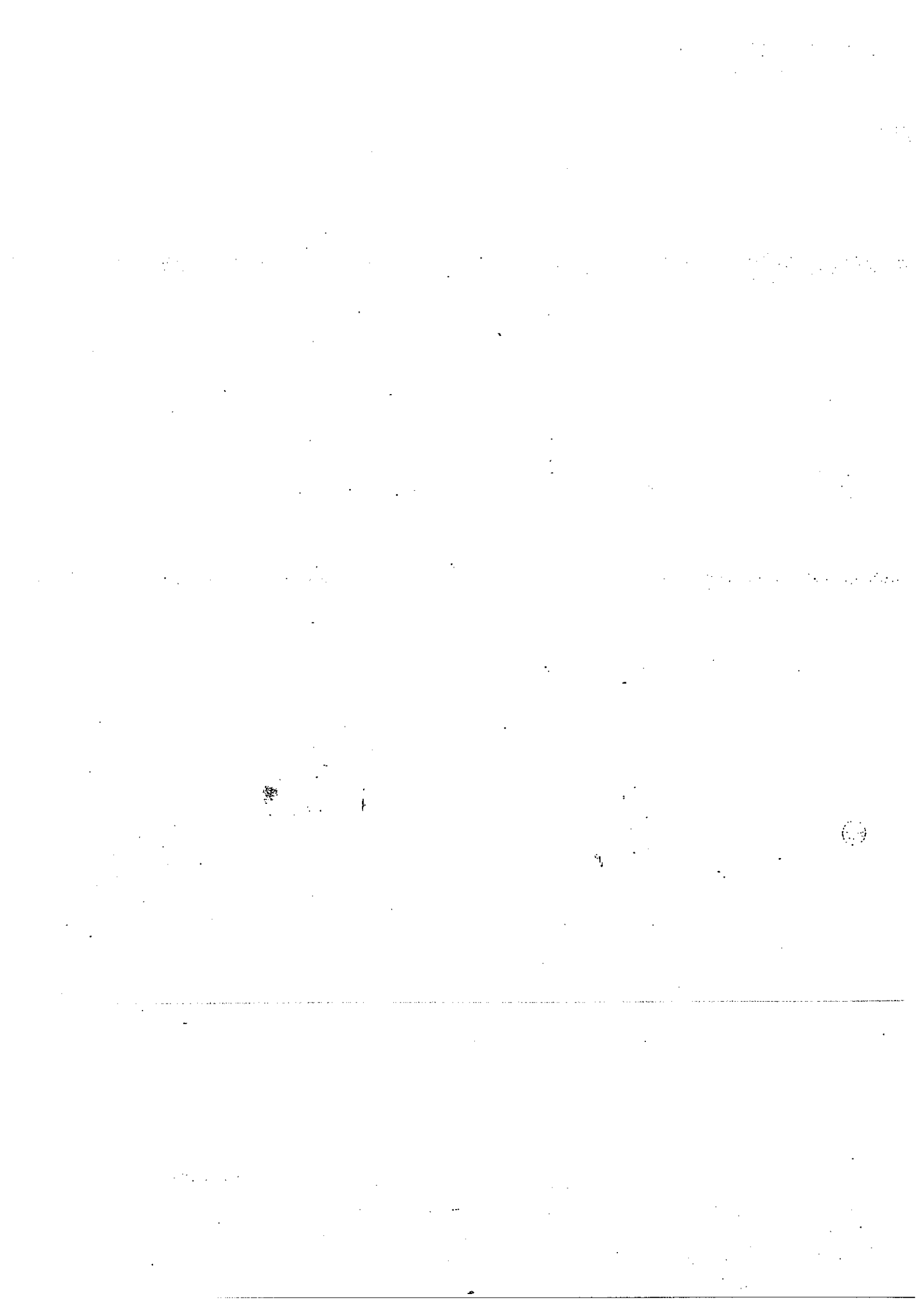
Answer these questions in complete sentences. Do not lift your answers from the passage. (2 x 2m)

24. What kind of pattern does a conch shell have?

25. Why does an adult conch return to shallow water?

End of paper

Setters: Mrs Ng Chay Yee and Mdm Yvonne Lee



ANSWER SHEET

EXAM PAPER 2013

SCHOOL : HENRY PARK PRIMARY SCHOOL

SUBJECT : PRIMARY 2 ENGLISH

TERM : SA1 (English Language quiz 2)

Q1	Q2	Q3	Q4
2	4	3	4

Q5) ice-cream

Q6) jelly

Q7) chocolate

Q8) custard

Q9	Q10	Q11
3	1	2

Q12) on

Q13) for

Q14) inside

Q15) out

Q16) to

Part 3.

Q17) Tortoises have patterns on their shells

Q18) His mother punished him when Charlie cried

Part 4

Q19) False

Q20) True

Q21) True

Q22) long; short

Q23) edible

Q24) A conch shell has a spiral pattern

Q25) An adult conch returns to shallow water to lay eggs