

Anglo-Chinese School
(Junior)



CONTINUAL ASSESSMENT 2 (2013)
PRIMARY 3
MATHEMATICS

Wednesday

21 August 2013

1 hour

INSTRUCTIONS TO PUPILS

DO NOT TURN OVER THE PAGES UNTIL YOU ARE TOLD TO DO SO

Follow all instructions carefully.

There are 20 questions in this booklet.

Answer ALL questions.

Name : _____ ()

Class : 3.()

Parent's Signature: _____

Booklet	Possible Marks	Marks Obtained
A	13	
B	16	
C	16	
TOTAL	45	

This question paper consists of 9 printed pages. (Inclusive of cover page)

SECTION A (8 × 2 marks)

For each of the following questions, choose the correct answer and write the correct option (1, 2, 3 or 4) in the brackets provided.

1. Express $\frac{8}{12}$ in the simplest form.

1) $\frac{1}{2}$

2) $\frac{2}{3}$

3) $\frac{3}{4}$

4) $\frac{1}{6}$

()

2. Which of the following fractions is the largest?

1) $\frac{1}{2}$

2) $\frac{2}{3}$

3) $\frac{5}{6}$

4) $\frac{7}{12}$

()

3. 4 kg 40 g is the same as _____.

1) 4004 g

2) 4040 g

3) 4044 g

4) 4400 g

()

4. Bob bought a toy from a bookshop with his savings. He gave the cashier 6 fifty-cent coins and 4 twenty-cent coins. How much did the toy cost?

- 1) \$ 3.80
- 2) \$ 7.20
- 3) \$ 7.30
- 4) \$ 10.70

()

5. Tim cut a ball of string into 8 pieces and had 88 cm left. Each piece of string was 8 cm long. What was the length of the string Tim had at first?

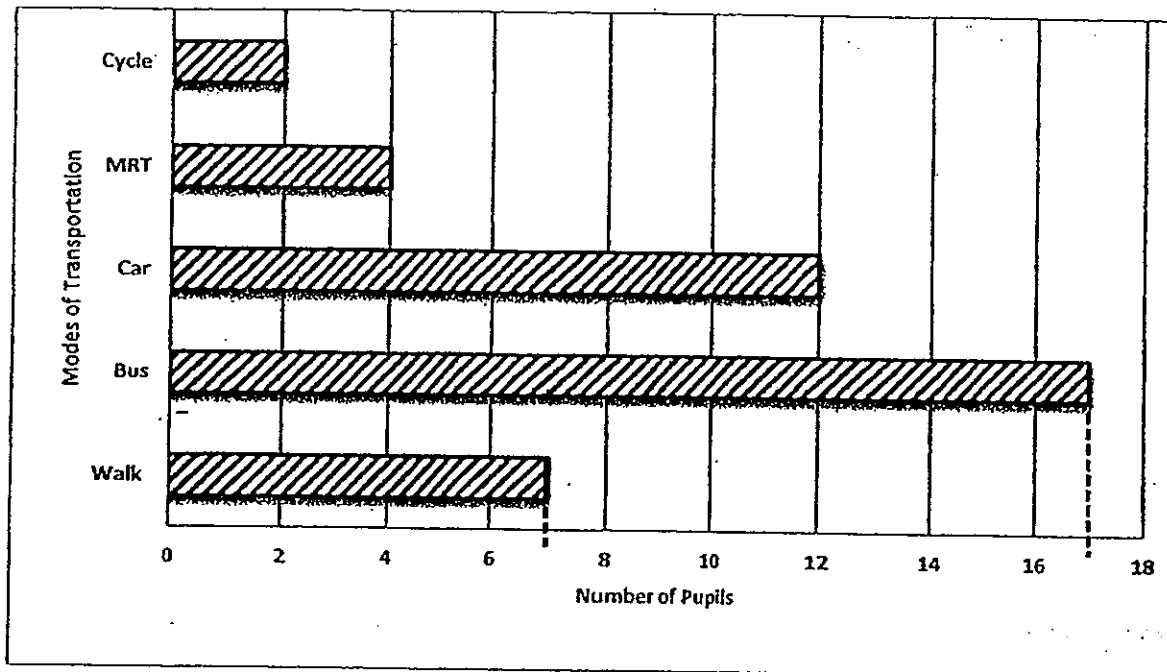
- 1) 48 m
- 2) 64 m
- 3) 136 m
- 4) 152 m

()

6. Muthu had 9 bottles of orange juice. Each bottle contained 330 ml of orange juice. He poured all the orange juice into jugs. The capacity of each jug was 300 ml. What was the least number of jugs he would need?

- 1) 7
- 2) 8
- 3) 9
- 4) 10

The bar graph below shows how pupils in Class 3A travel to school. Look at the bar graph carefully and answer questions 7 and 8.



7. How many pupils walk to school?

- 1) 2
- 2) 4
- 3) 7
- 4) 12

()

8. How many more pupils travel to school by bus than by car?

- 1) 5
- 2) 6
- 3) 12
- 4) 17

()

Section B (8 x 2 marks)

Work out the following sums and write your answers in the boxes provided.

9. Write the missing numerator and denominator in the boxes provided.

$$\frac{3}{4} = \frac{\boxed{}}{12} = \frac{18}{\boxed{}}$$

10. Arrange the fractions in order, beginning with the smallest.

$$\frac{2}{3}, \frac{1}{5}, \frac{1}{2}$$

11. Shade $\frac{3}{4}$ of the figure below.

The graph below shows the number of pupils in a class who went to Sentosa for the past 5 months.

Look at the graph carefully and use it to answer Questions 12 and 13.

January	★
February	★ ★ ★
March	★ ★ ★ ★ ★ ★
April	★ ★ ★ ★
May	★ ★

Each ★ stands for 3 pupils

12. How many more pupils went to Sentosa in April than in January?

13. How many pupils went to Sentosa before April?

14. Mr Chen had \$60. He spent \$19.95 on a shirt.
How much money had he left?

(4 x 4 marks)

SECTION C (2 x 4 marks)

Answer each question in the space provided. Show your working clearly as marks will be awarded for relevant statements and the correct answer.

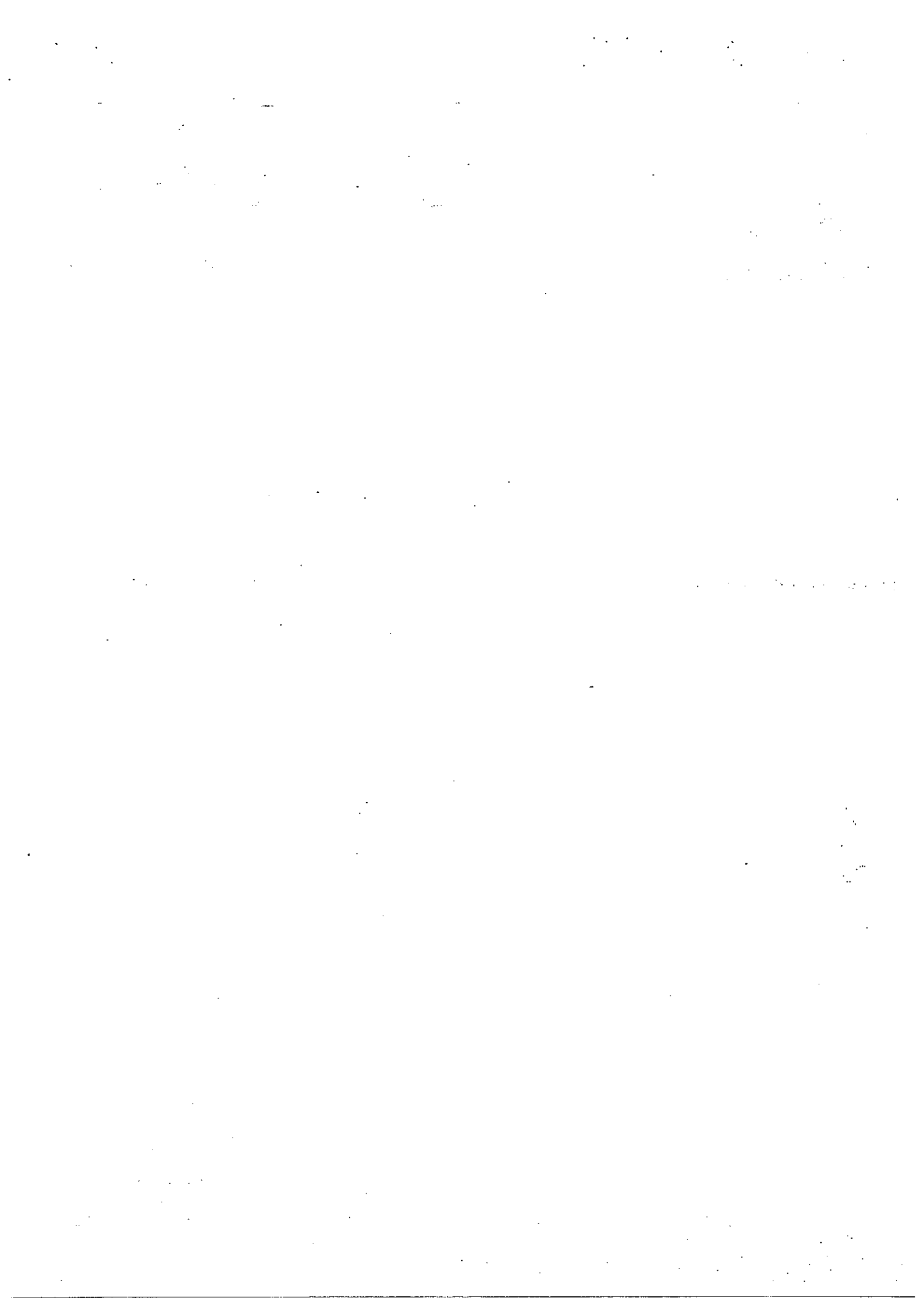
17. Ryan had a rope 5m long. He cut it into two pieces. One piece was 30m longer than the other piece. What was the length of the longer piece of rope?

18. There are 2 beakers of water. Beaker A can hold 1900 ml of water. The total capacity of the 2 beakers is 3020 ml. How much more water can Beaker A hold than Beaker B?

19. Aidan, David and Tom had \$763 altogether. Aidan had \$70 more than David. David had thrice as much money as Tom. How much money did Tom have?

20. Ben baked some cookies. He baked 40 cookies fewer than Kate. How many cookies must Kate give to Ben so that she had 10 more cookies than Ben?

End of Paper



ANSWER SHEET

EXAM PAPER 2013

SCHOOL : ANGLO-CHINESE SCHOOL (JUNIOR)

LEVEL : PRIMARY 3

SUBJECT : MATHEMATICS

TERM : CA2

BOOKLET A

Q1	Q2	Q3	Q4	Q5	Q6	Q7	Q8
2	3	2	1	4	4	3	1

BOOKLET B

Q9

9 24

Q10

$\frac{1}{5}$ $\frac{1}{2}$ $\frac{2}{3}$

Q11

Q12

9 more pupils

Q13

30 pupils

Q14

\$40.05

Q15

1ℓ 800ml

Q16

125g

Q17

$500 - 30 = 470$

$470 / 2 = 235$

$235 + 30 = 265$

The length of the longer piece of rope is 265cm

Q18

$$3020 - 1900 = 1120$$

$$1900 - 1120 = 780$$

Beaker A can hold 780ml more water than beaker B.

Q19

$$\$763 - \$70 = \$693$$

$$\$693 / 7 = \$99$$

Tom had \$99.

Q20

$$40 - 10 = 30$$

$$30 / 2 = 15$$

Kate must give 10 more cookies to Ben so that she had 10 more cookies than Ben.