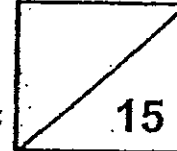




Rosyth School
Second Topical Test for 2012
SCIENCE
Primary 3

Name: _____

Total
Marks:



Class: Pr 3 _____

Register No. _____

Duration: 30 minutes

Date: 21st August 2012

Parent's Signature: _____

Instructions to Pupils.

1. Do not open the booklet until you are told to do so.
2. Follow all instructions carefully.
3. This paper consists of 2 parts, Part I and Part II.
4. For questions 1 to 10, write the correct answer in the brackets provided.
5. For questions 11 and 12, give your answers in the spaces provided in Part II.

	Maximum	Marks Obtained
Part I :	10 marks	
Part II	5 marks	
Total	15 marks	

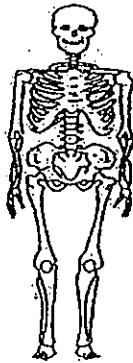
* This booklet consists of 7 pages. (pg. 1 to 7)

This paper is not to be reproduced in part or whole without the permission of the Principal.

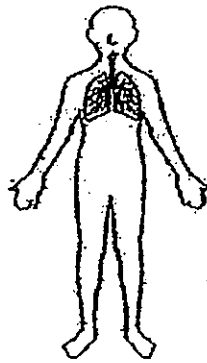
Part I (10 MARKS)

For each question from 1 to 10, four options are given. One of them is the correct answer. Make your choice (1, 2, 3 or 4) and write the correct answer in the brackets provided. Each correct answer will score one mark.

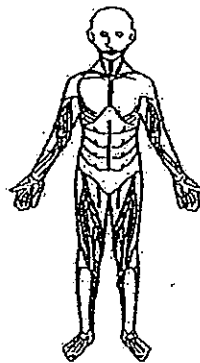
1. Which of the following body systems work together to enable the different parts of the body to move?



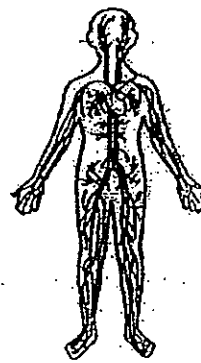
Body System A



Body System B



Body System C



Body System D

- (1) A and B only
(3) B and C only

- (2) A and C only
(4) B and D only

()

2. Ahmad described one of the human body systems as follows:

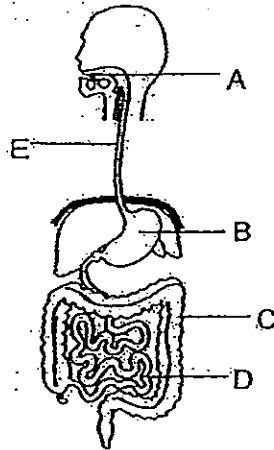
- It does not take in oxygen into the body.
- Food and waste materials can be found in this system.
- It carries away waste materials from the different parts of the body.
- Food, water and oxygen are moved to all parts of the body by this system.

Which one of the following systems matches Ahmad's description?

- (1) skeletal system
(2) digestive system
(3) respiratory system
(4) circulatory system

()

Refer to the diagram below (human digestive system) and answer Questions 3 and 4.



3. At which part of the human digestive system is digested food absorbed into the blood stream?

- (1) A (2) B
 (3) C (4) D ()

4. Which one of the following best describes what takes place at B, C and E correctly?

	B	C	E
(1)	Allows food to be pushed downwards	Digestion takes place	Most of the water is removed from the undigested food
(2)	Digestion takes place	Most of the water is removed from the undigested food	Allows food to be pushed downwards
(3)	Most of the water is removed from the undigested food	Digestion takes place	Allows food to be pushed downwards
(4)	Allows food to be pushed downwards	Most of the water is removed from the undigested food	Digestion takes place

()

5. Which of the following shows the correct path that our food takes during digestion?

- (1) mouth → gullet → large intestine → stomach → small intestine
- (2) mouth → gullet → small intestine → stomach → large intestine
- (3) mouth → gullet → stomach → small intestine → large intestine
- (4) mouth → gullet → stomach → large intestine → small intestine

()

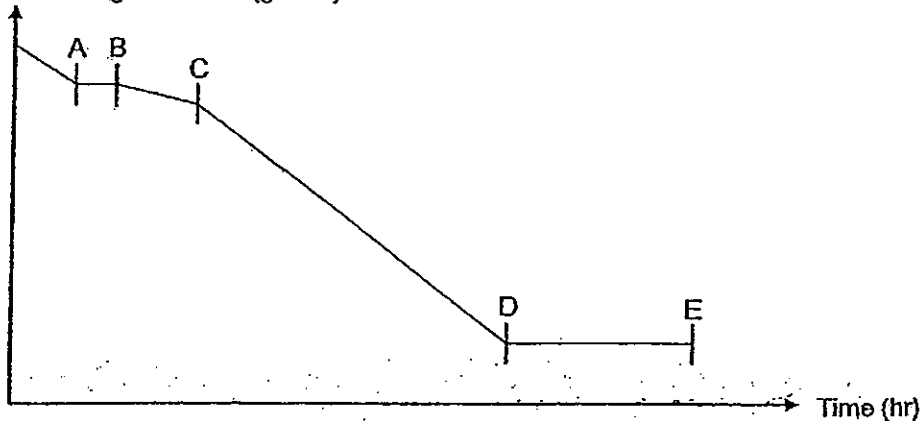
6. Shirlene did not chew her food properly and swallowed down her food quickly. Which parts of her digestive system would have to work harder to digest her food?

- (1) gullet and stomach
- (2) stomach and large intestine
- (3) stomach and small intestine
- (4) small intestine and large intestine

()

7. The graph below shows the amount of undigested food as it travelled through the digestive system. Which part of the graph best represents the large intestine?

Amount of undigested food (grams)

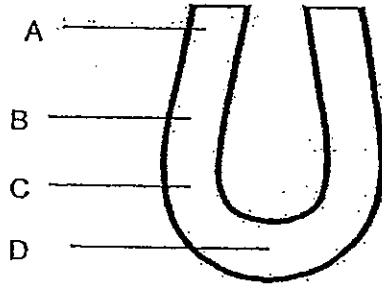


- (1) AB
- (3) CD

- (2) BC
- (4) DE

()

8. The picture below shows a horseshoe magnet.



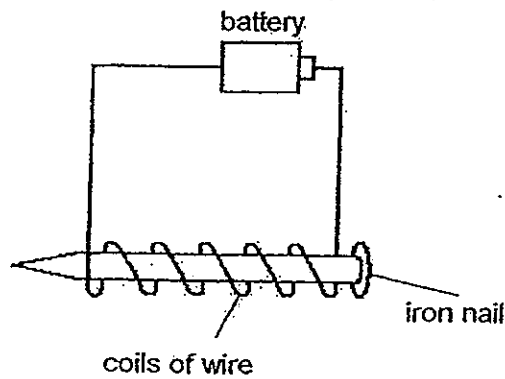
At which part, A, B, C or D, is the magnet the strongest?

- (1) A
- (3) C

- (2) B
- (4) D

()

9. Sally made an electromagnet using the set-up below.



What can Sally do to make the electromagnet stronger?

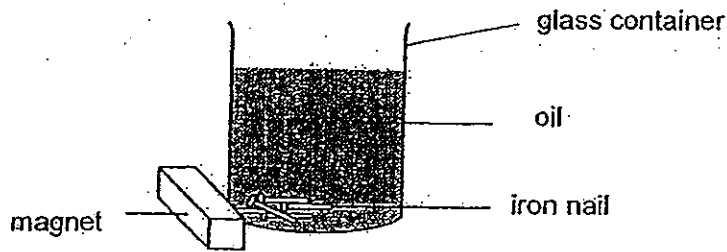
- A : Use a longer nail
- B : Use a longer wire
- C : Add another battery
- D : Increase the number of coils

- (1) A and B only
- (3) B and D only

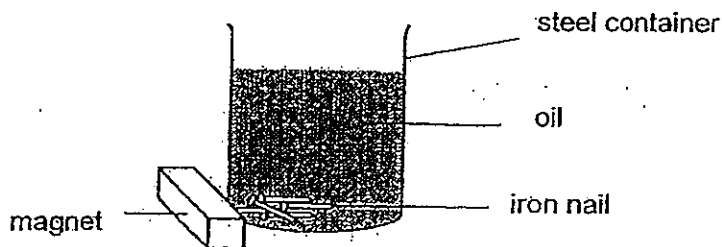
- (2) B and C only
- (4) C and D only

()

10. Jeremy put some iron nails inside a glass container of oil. When he placed a magnet on the outside of the container, he was able to slide the iron nails up.



When he replaced the glass container with a steel container, he could not slide the iron nails up.



Which of the following best explains what happened?

- (1) The magnetism from the magnet could pass through the oil.
- (2) The magnetism from the magnet could not pass through the oil.
- (3) The magnetism from the magnet could pass through the glass container but not the steel container.
- (4) The magnetism from the magnet could pass through the steel container but not the glass container.

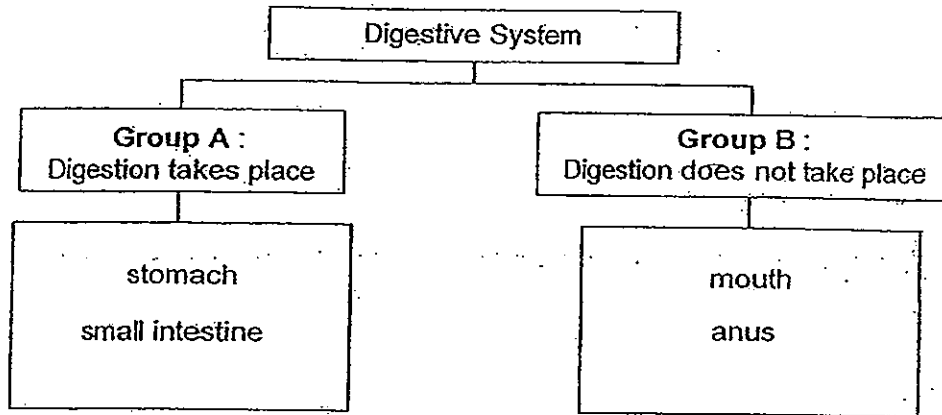
()

End of Part I

Part II (5 MARKS)

For questions 11 and 12, write your answers in the blanks provided.

11. Roy classified the body parts of the human digestive system as shown below.

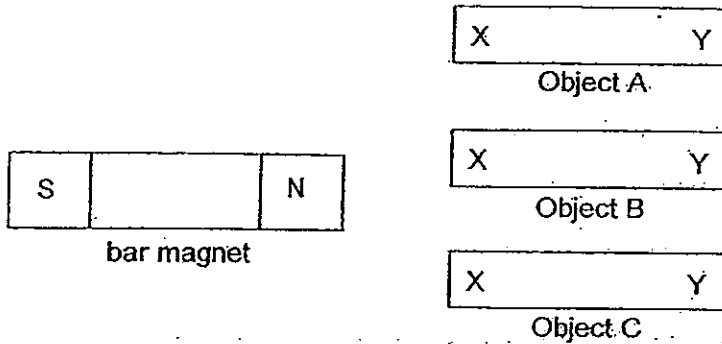


(a) Samy said that Roy has classified one body part wrongly. Name the body part that has been classified wrongly (1m)

(b) Samy also suggested that Roy should include the body part 'large intestine' under Group A. Do you agree with Samy? Give a reason to support your answer. (1m)

(c) Roy vomited after breakfast and felt some pain at the area slightly below the lungs. Which part of the digestive system is not working well? (1m)

12. Janice carried out an experiment with a bar magnet and three objects A, B and C, as shown below.



She tested each object with the bar magnet and recorded her results in the table below.

Object	Observations
A	X and Y are attracted by the North pole.
B	X is attracted by the North pole but Y is repelled by it.
C	Nothing happened at X or Y when the magnet was brought near it.

Based on the results in the table above, which object (A, B or C) is most likely to be :

- (a) a magnet : Object _____ (1m)
- (b) a non-magnetic object: Object _____ (1m)

End of Part II

ANSWER SHEET

EXAM PAPER 2012

SCHOOL : ROSYTH SCHOOL

SUBJECT : PRIMARY 3 - SCIENCE

TERM : CA 2

Q1	Q2	Q3	Q4	Q5	Q6	Q7	Q8	Q9	Q10
2	4	4	2	3	3	4	1	4	3

11. a) Mouth

b) No. Digestion does not take place in the large intestine.

c) Stomach

12. a) B

b) C

