



MAHA BODHI SCHOOL
2013 SEMESTRAL ASSESSMENT 1
PRIMARY THREE SCIENCE

Name : _____ ()

Date : 16 May 2013

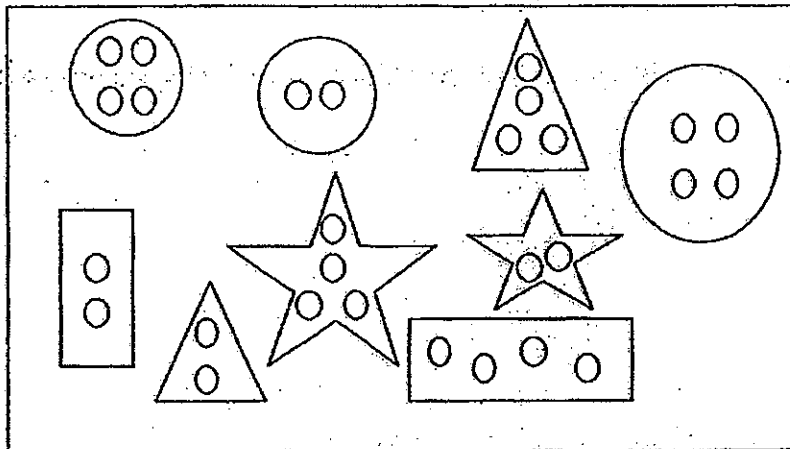
Class : Primary 3()

Duration : 1 h 15 min (Booklets A and B)

BOOKLET A : [15 x 2 marks = 30 marks]

For each question from 1 to 15, four options are given. One of them is the correct answer. Make your choice (1, 2, 3 or 4). **Shade your answer on the Optical Answer Sheet.**

1. Sam has some buttons as shown in the diagram below.

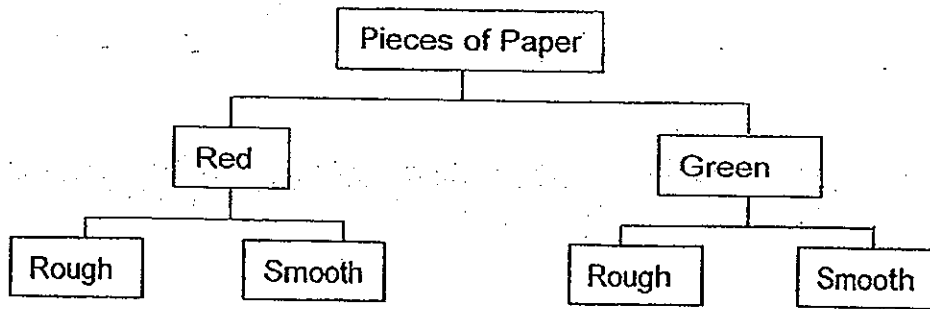


Based on the diagram, which of the following properties can be used to classify the buttons?

- A. size
- B. shape
- C. colour
- D. number of holes

- (1) A and B only
- (2) A and D only
- (3) A, B and D only
- (4) B, C and D only

2. Sam placed some pieces of paper into groups as shown below.



What are the properties that Sam used to classify the pieces of paper?

- (1) size and shape
- (2) texture and size
- (3) shape and colour
- (4) colour and texture

3. The diagram below shows a bird kept in a cage.



After three days, the bird died because it did not have _____.

- A. air
 - B. food
 - C. water
 - D. sunlight
-
- (1) A and B
 - (2) A and D
 - (3) B and C
 - (4) C and D

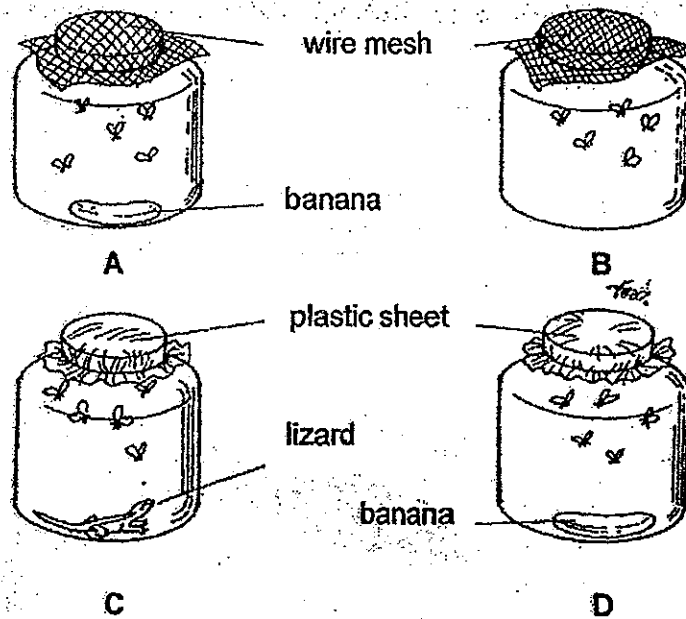
The table below shows the characteristics of some things, W, X, Y and Z.

Things	Moves from place to place	Needs air, water and food	Reproduces	Has legs
W		✓	✓	
X	✓	✓	✓	✓
Y	✓	✓	✓	
Z	✓			✓

Which of the following is most likely to be a non-living thing?

- (1) W
- (2) X
- (3) Y
- (4) Z

5. Five fruit flies are put into each of the four bottles (A, B, C and D) as shown below.



In which bottle will the fruit flies increase in number after a few weeks?

- (1) A
- (2) B
- (3) C
- (4) D

6. Andy, Ben and Cathy made a statement each.

Andy: The bird flies away when a dog runs towards it.

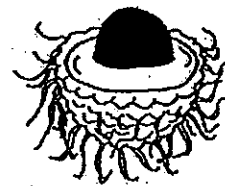
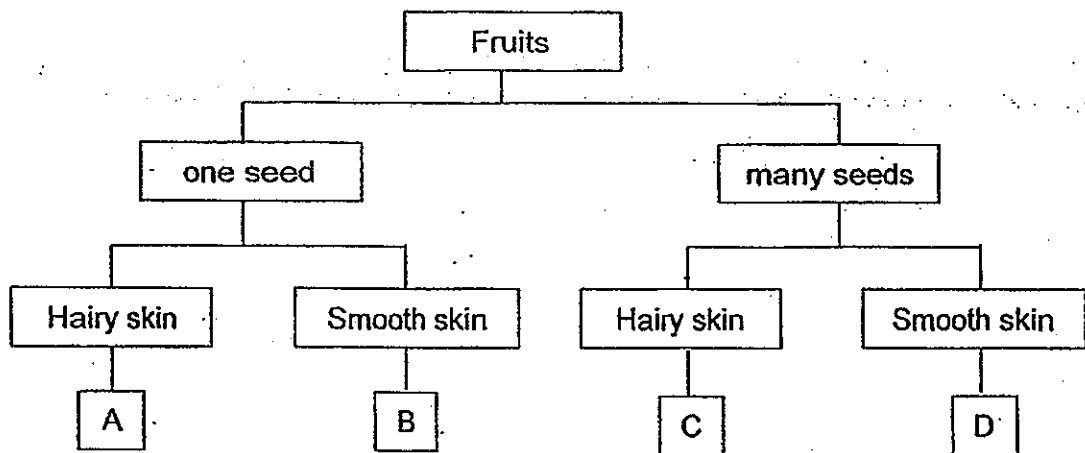
Ben: The mimosa plant closes its leaves slowly whenever I touch it.

Cathy: We should run to a shelter now, as it has started to rain!

What do the statements above show about living things?

- (1) They die.
- (2) They respond to changes around them.
- (3) They need air, water and food to survive.
- (4) They reproduce to ensure the survival of its own kind.

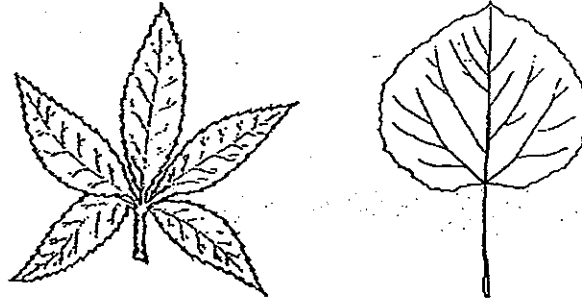
7. The chart below shows how fruits can be classified.



The fruits shown above can be represented by the letters _____.

- (1) A and C
- (2) A and D
- (3) B and C
- (4) B and D

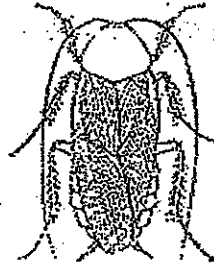
Look at the diagram of the two leaves below.



How are the leaves similar?

- (1) Both leaves have a toothed edge.
- (2) Both leaves have a smooth edge.
- (3) Both leaves are of the same size.
- (4) Both leaves are of the same shape.

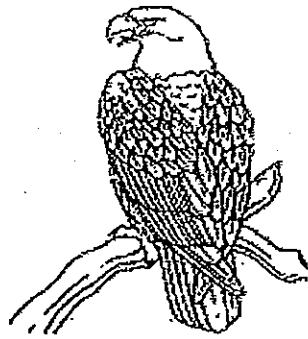
9. The diagram below shows an animal.



Based on this diagram, which of the following can you observe?

- A. It has six legs.
 - B. It lays eggs.
 - C. It lives in dark places.
 - D. It has a pair of long antennae.
-
- (1) A and B only
 - (2) A and D only
 - (3) B, C and D only
 - (4) A, B, C and D

10. Study the diagram of the two birds below.

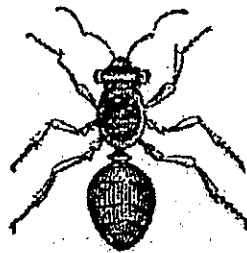


What are different between these two birds?

- A. The shape of their beaks.
- B. Their type of body covering.
- C. The way they reproduce.

- (1) A only
- (2) B only
- (3) A and B only
- (4) A and C only

11. John found an animal, as shown in the diagram below.



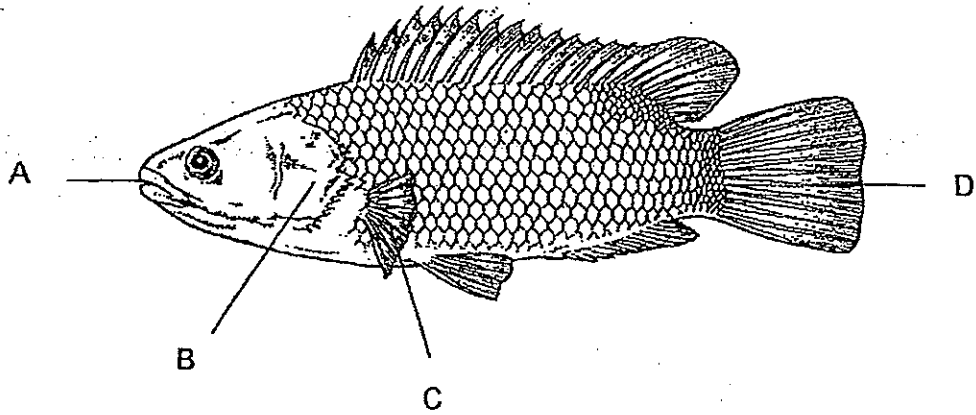
He observed the animal and recorded his findings below.

- A. It has six legs.
- B. It does not have wings.
- C. It has three body parts.

Which of the above statements will help him classify this animal under the group of insects?

- (1) A and B only
- (2) A and C only
- (3) B and C only
- (4) A, B and C

12. The diagram below shows some parts of the fish which are labelled A, B, C and D.



Which of the labelled parts help the fish to swim?

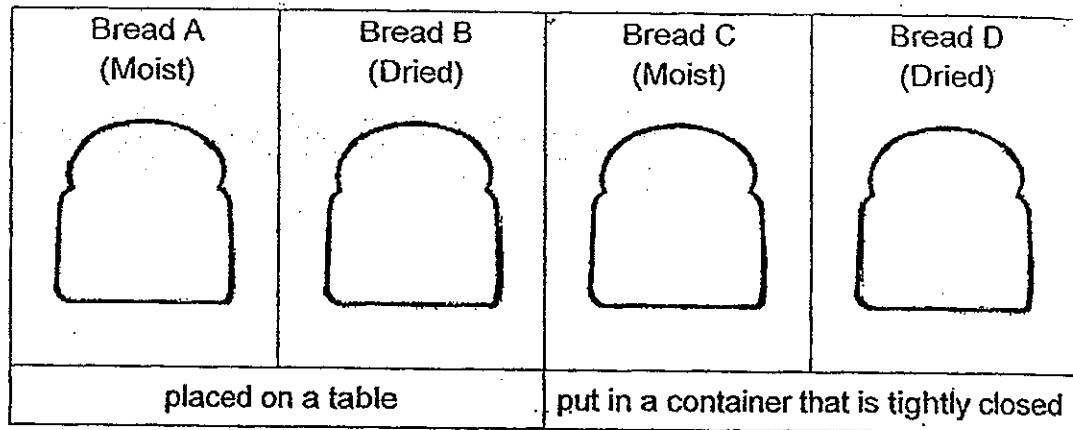
- (1) A and D only
 - (2) B and C only
 - (3) C and D only
 - (4) A, B and C only
13. The diagram below shows a type of fungi.



Which one of the following statements is incorrect about this type of fungi?

- (1) They make their own food.
- (2) They reproduce by spores.
- (3) They do not need light to grow.
- (4) They have a cap, a stalk and gills.

14. The picture below shows four slices of bread of the same loaf and of the same thickness.



Which bread would have mould growing on it first?

- (1) Bread A
 - (2) Bread B
 - (3) Bread C
 - (4) Bread D
15. Jenny made the following statements about bacteria and fungi.

- A. All fungi are harmful.
- B. All bacteria need sunlight to make food.
- C. All bacteria are living things.
- D. All fungi need air, food and water to live.

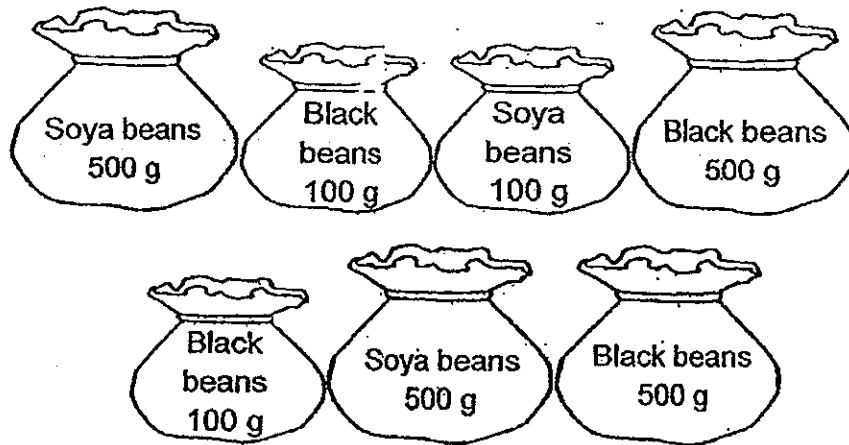
Which of the statements above are correct?

- (1) A and B
- (2) A and D
- (3) B and C
- (4) C and D

END OF BOOKLET A

GO ON TO BOOKLET B

16. Beatrix was given some bags of beans as shown below.

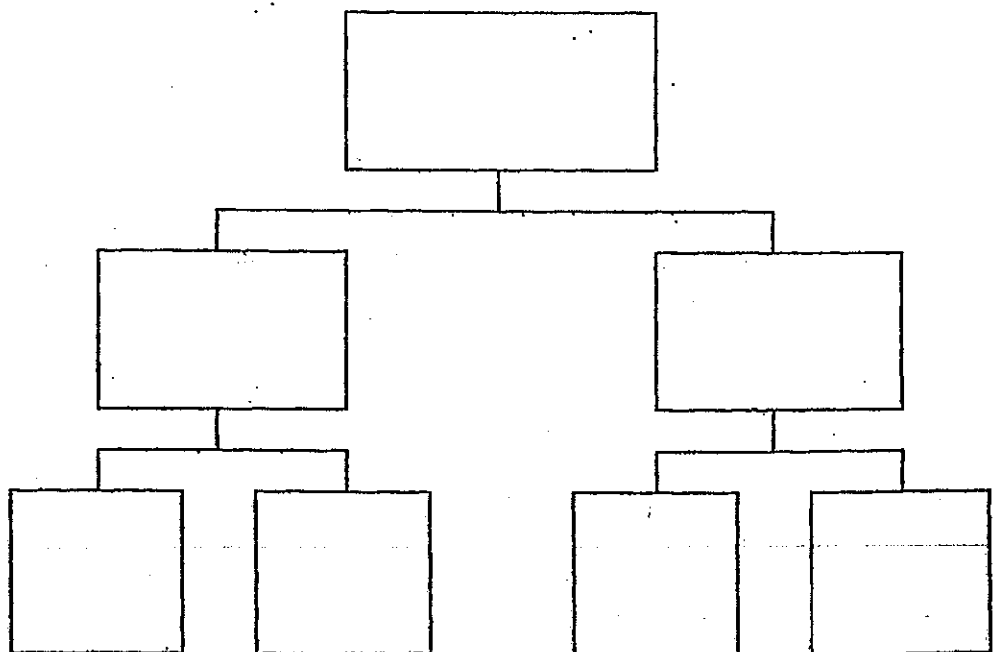


(a) Fill in each blank with the correct word.

She can put the bags of beans into groups based on their

_____ and their _____ [1]

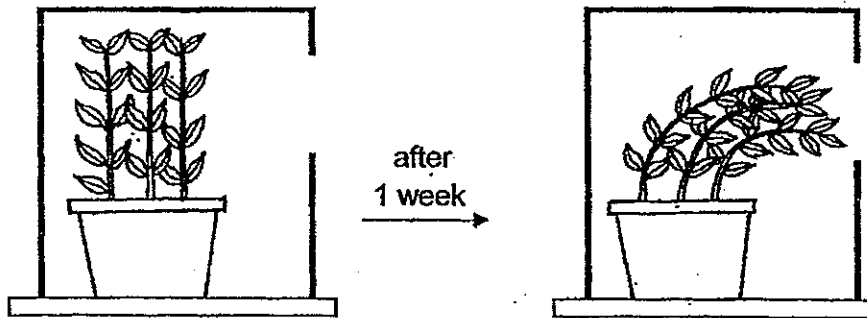
(b) Complete the classification chart below to show how the bags of beans can be grouped. [2]



Marks : / 3

17. Benjamin carries out an experiment on a plant near the window.

He places a cardboard box, with an opening on one side, over the plant and waters the plant daily. After one week, he observes the change in the plant as shown below.



- (a) Benjamin observes that parts of the plant are growing towards the opening.

Besides movement and growth, what is another characteristic of living thing that this experiment shows? [1]

- (b) Besides water, name two other things that the plant needs in order to stay alive? [1]

- (c) Benjamin wants to make the plant grow upright again.

State one way he can make the plant do so. [1]

Marks :

/ 3

18. The classification table below shows how some animals, P, Q, R and S, can be grouped.

Animals			
Feed young with milk		Do not feed young with milk	
Can swim	Cannot swim	Can swim	Cannot swim
P	Q	R	S

- (a) State all the characteristics of Animal Q. [2]

- (b) From the table, in which main group of animals would animals P and Q be grouped under? [1]

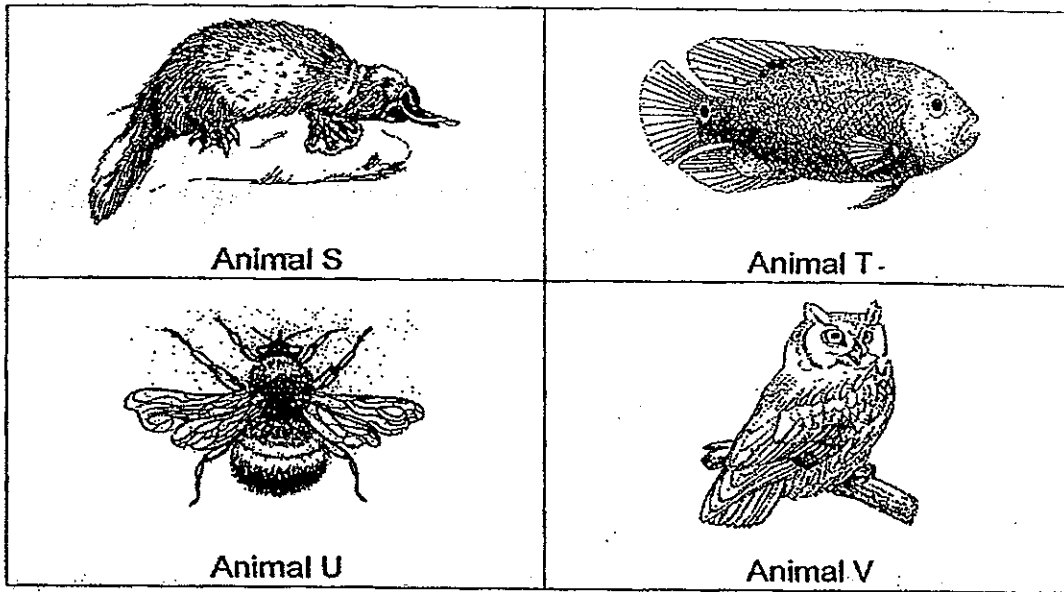
- (c) From the table, state one similarity and one difference between Animals P and R. [2]

Similarity:

Difference:

Marks : 15

19. The diagrams below show some animals.



(a) Place these animals in their correct groups in the table below.

Write the letters S, T, U and V in the correct boxes.

[2]

Main Groups of Animals	Animal
Birds	
Fishes	
Insects	
Mammals	

Marks :

12

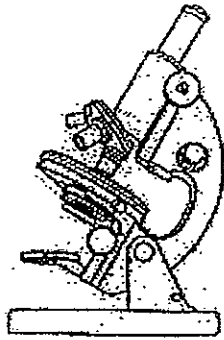
- (b) Based on your answer in (a), state one characteristic that you can **observe from the diagram** that each of the following animals has which is common to the animals in that particular group it belongs to. [4]

Animal	Characteristic which can be observed and is common to the animals in the group it belongs to.
S	
T	
U	
V	

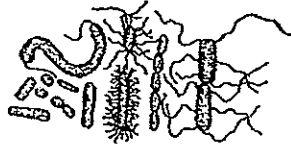
Marks :

/ 4

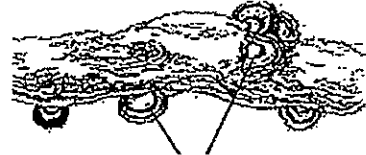
- 20 (a) Jane needs to use a microscope to observe bacteria but she does not need to use a microscope to observe the bracket fungi.



microscope



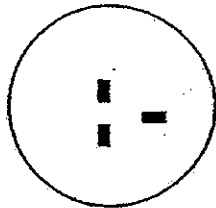
bacteria



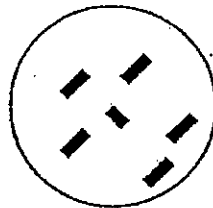
bracket fungi

Why does she need to use a microscope to observe the bacteria? [1]

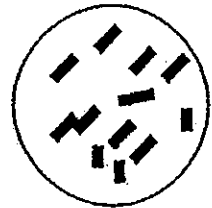
- (b) The diagram below shows what Jane drew when she observed three bacteria under a microscope over a period of 10 minutes.



0 minute



5 minutes



10 minutes

Based on Jane's observation, what characteristic of living things does this show? [1]

Marks :

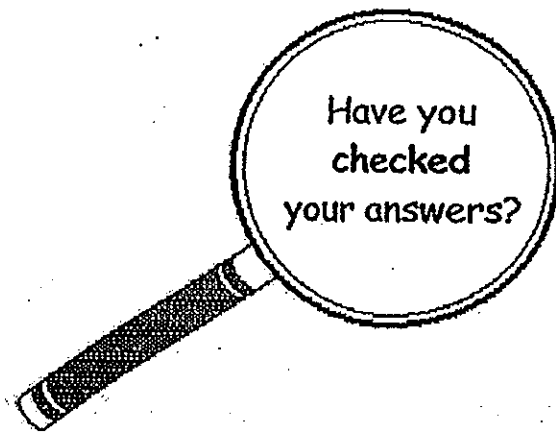
/2

- (c) Jane and Evan saw some bracket fungi on their way home from school. Jane told Evan that the bracket fungi are plants.

Is Jane correct? Explain your answer.

[1]

~ END OF PAPER ~



Marks :

/ 1

ANSWER SHEET

EXAM PAPER 2013

SCHOOL : MAHA BOHDI SCHOOL

SUBJECT : PRIMARY 3 SCIENCE

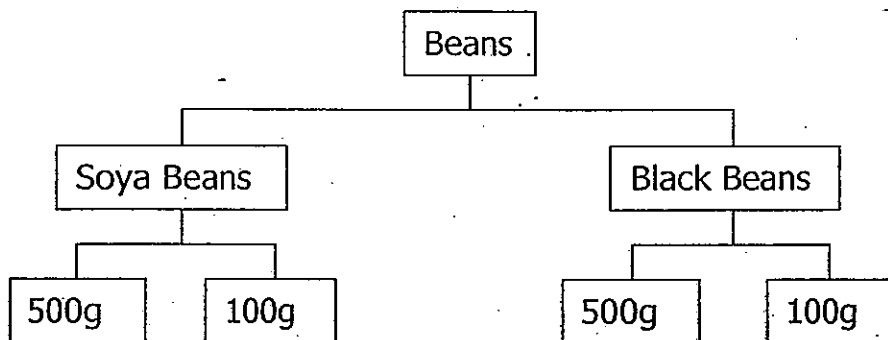
TERM : SA1

Q1	Q2	Q3	Q4	Q5	Q6	Q7	Q8	Q9	Q10	Q11	Q12	Q13	Q14	Q15
3	4	3	4	1	2	2	1	2	1	2	3	1	1	4

Booklet B

Q16) a) weight and their type/kind of beans

b)



Q17) a) Living things respond to changes

b) The plant needs air and food in order to stay alive

c) Remove the box

Q18) a) Animal Q feeds its young with milk and cannot swim

b) Mammals

c) Similarity: They both can swim

Difference: Animal P feed its young with milk while Animal R does not feed its young with milk

Q19) a)

Main Groups of Animals	Animal
Birds	V
Fishes	T
Insects	U
Mammals	S

b)

Animal	Characteristic which can be observed and is common to the animals in the group it belongs to
S	It has fur
T	It has scales / gills
U	It has six legs
V	It has a beak

Q20) a) Bacteria are micro-organisms

b) Living things reproduce

c) No, bracket fungi does not make its food